

F.A.S. RTE.	SECTION	COUNTY	TOTAL SHEETS	SHEET NO.
206	03-00094-03-GR	MERCER	11	1
STA. 124+54.77 TO STA. 257+10.06				
FED. ROAD DIST. NO. 7			ILLINOIS	

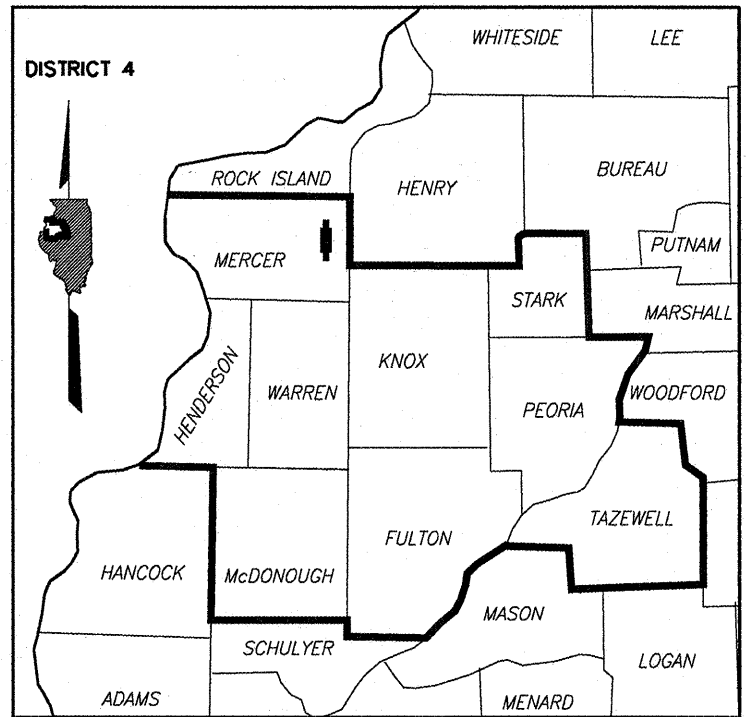
STATE OF ILLINOIS
DEPARTMENT OF TRANSPORTATION

PLANS FOR
PROPOSED LOCAL AGENCY IMPROVEMENT
FEDERAL-AID STR PROJECT

F.A.S. 206 (C.H. 4)
KNOXVILLE ROAD GUARDRAIL
PROJECT RS-0206 (118)
MERCER COUNTY
SECTION 05-00094-03-GR
JOB NO. C-94-063-11

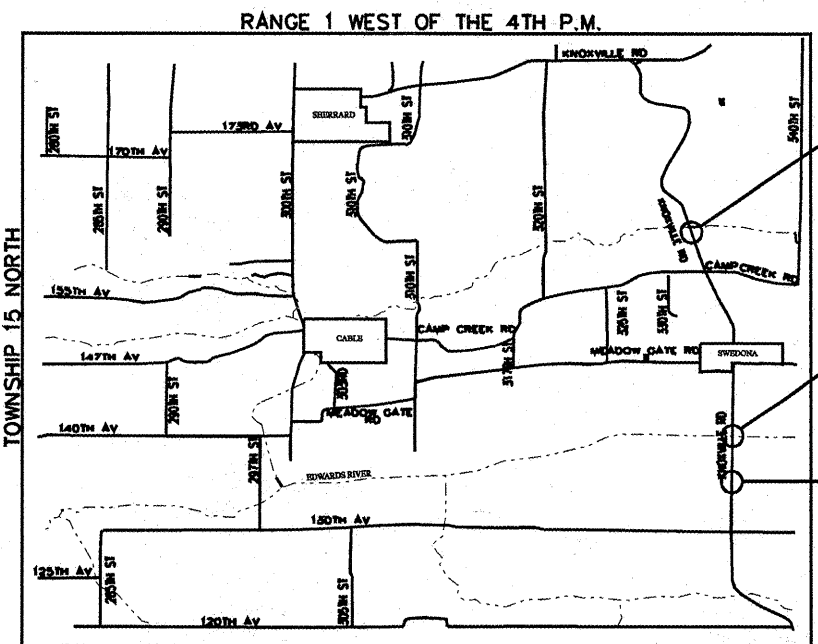
INDEX OF SHEETS	
SHEET NO.	DESCRIPTION
1	COVER SHEET
2	GENERAL NOTES, TYPICAL SECTION, SUMMARY AND SCHEDULE OF QUANTITIES
3-11	PLAN AND PROFILE

- PLAN 1 INCH = 50 FEET
- PROFILE HORIZONTAL 1 INCH = 50 FEET
- PROFILE VERTICAL 1 INCH = 10 FEET
- CROSS SECTION HORIZ. 1 INCH = 10 FEET
- CROSS SECTION VERT. 1 INCH = 5 FEET



LOCATION OF SECTION INDICATED THUS:

- LIST OF STANDARDS**
- 00001-06 STANDARD SYMBOLS, ABBREVIATIONS AND PATTERNS
 - 701901-01 TRAFFIC CONTROL DEVICES
 - BLR 26-2 STEEL PLATE BEAM GUARDRAIL 27 1/2" HEIGHT
 - ~~BLR 21-1 TRAFFIC BARRIER TERMINAL TYPE A~~
 - 701006-03 OFF-RD OPERATIONS, 2L, 2W, 15' (4.5 m) TO 24" (600 mm) FROM PAVEMENT EDGE
 - 630301-05 SHOULDER WIDENING FOR TYPE I (SPECIAL) GUARDRAIL TERMINALS



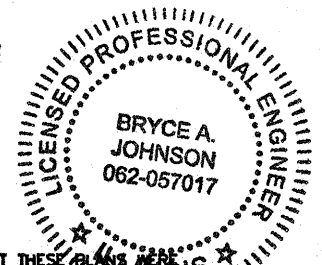
LOCATION MAP

TOTAL LENGTH OF PROJECT = 13,255.3 ft. (2.51 mi)
NET LENGTH OF PROJECT = 13,074.7 ft. (2.48 mi)

PROPOSED IMPROVEMENT BEGINS STA. 124+54.77

BRIDGE OMISSION STA. 243+80.57 TO STA. 245+61.12

PROPOSED IMPROVEMENT ENDS STA. 257+10.06



I HEREBY CERTIFY THAT THESE PLANS WERE PREPARED BY ME OR UNDER MY DIRECT SUPERVISION AND I AM A DULY REGISTERED PROFESSIONAL ENGINEER UNDER THE LAWS OF THE STATE OF ILLINOIS.

Bryce A. Johnson DATE 3/10/11
IL REGISTRATION NO. 062-057017
EXPIRATION DATE: 11/30/2011



WARNING



CALL BEFORE YOU DIG

APPROVED MAR 18, 2011

APPROVED 03/21/11

PASSED 04/21/11

Releasing For Bid Based on Limited Review APRIL 21, 2011

DEPUTY DIRECTOR OF HIGHWAYS REGION THREE ENGINEER

STATE OF ILLINOIS
DEPARTMENT OF TRANSPORTATION

DESIGN DESIGNATION

HIGHWAY CLASS: RURAL COLLECTOR
DESIGN SPEED: 55 M.P.H.
ADT = 1300
DESIGN GUIDELINES: 3R
COMMITMENTS: NONE
VARIANCES GRANTED: NONE

CONTRACT NO. 89650
JOB NO. C-94-063-11

F.A.S. RTE	SECTION	COUNTY	TOTAL SHEETS	SHEET NO.
206	05-00094-03-GR	MERCER	11	2
STA. 124+54.77 TO STA. 257+10.06				
FED. ROAD DIST. NO. 7			ILLINOIS	

SUMMARY OF QUANTITIES

CODE NUMBER	PAY ITEMS	UNIT	TOTAL QUANTITY
63000001	STEEL PLATE BEAM GUARDRAIL, TYPE A, 6 FOOT POSTS	FOOT	4,460
63100167	TRAFFIC BARRIER TERMINAL, TYPE I (SPECIAL) TANGENT	EACH	12
63100075	TRAFFIC BARRIER TERMINAL, TYPE 5A	EACH	3
63300725	STEEL PLATE BEAM GUARDRAIL (SHORT RADIUS)	FOOT	25
67100100	MOBILIZATION	L. SUM	1
X7010216	TRAFFIC CONTROL AND PROTECTION, (SPECIAL)	L. SUM	1

SCHEDULE OF QUANTITIES

63000001 STEEL PLATE BEAM GUARDRAIL, TYPE A, 6 FOOT POSTS FOOT

RT. STA. 129+12.5 - 133+12.5	400
LT. STA. 179+12.5 - 182+10.0	297.5
LT. STA. 190+88.5 - 191+38.5	50
RT. STA. 234+35 - 242+72.5	837.5
LT. STA. 235+18 - 243+05.5	787.5
LT. STA. 245+75.7 - 256+13.2	1037.5
RT. STA. 245+75.7 - 256+25.7	1050
TOTAL	4,460

63100167 TRAFFIC BARRIER TERMINAL, TYPE I (SPECIAL) TANGENT EACH

RT. STA. 128+62.5 - 129+12.5	1
RT. STA. 133+12.5 - 133+62.5	1
LT. STA. 178+72.5 - 179+12.5	1
LT. STA. 182+10.0 - 182+60.0	1
LT. STA. 190+38.5 - 190+88.5	1
LT. STA. 191+38.5 - 191+88.5	1
RT. STA. 233+85 - 234+35	1
RT. STA. 242+72.5 - 243+22.5	1
LT. STA. 234+68 - 235+18	1
LT. STA. 243+05.5 - 243+55.5	1
LT. STA. 256+13.2 - 256+63.2	1
RT. STA. 256+25.8 - 256+75.8	1
TOTAL	12

63100075 TRAFFIC BARRIER TERMINAL, TYPE 5A EACH

RT. STA. 243+66 - 243+80.6	1
RT. STA. 245+61 - 245+75.7	1
LT. STA. 245+61 - 245+75.7	1
TOTAL	3

63300725 STEEL PLATE BEAM GUARDRAIL (SHORT RADIUS) FOOT

RT. STA. 243+52 - 243+66	25
TOTAL	25

67100100 MOBILIZATION L. SUM

COMPLETE	1
TOTAL	1

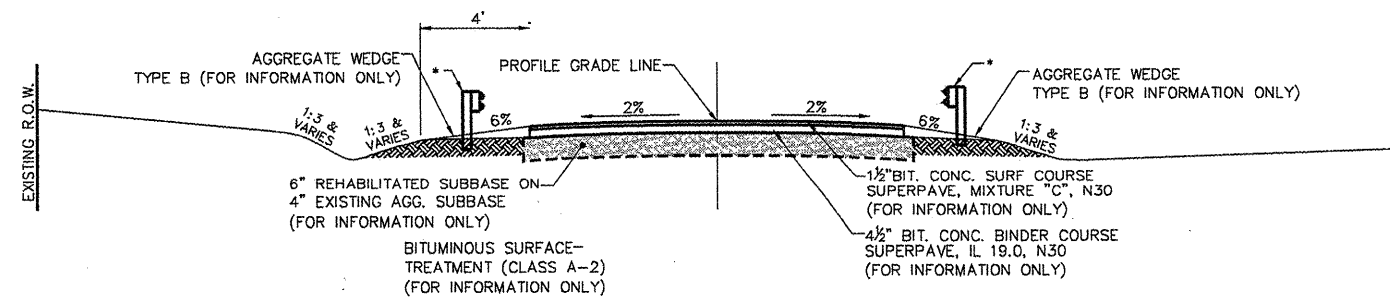
X7010216 TRAFFIC CONTROL AND PROTECTION, (SPECIAL) L. SUM

COMPLETE	1
TOTAL	1

GENERAL NOTES

- GUARDRAIL PLANS ARE FROM STA. 124+54.77 TO STA. 257+10.06. BRIDGE OMISSION FROM STA. 243+80.51 TO STA. 245+61.20.
- PROJECT INCLUDES DELIVERY AND COMPLETE INSTALLATION OF GUARDRAIL AS SHOWN ON PLANS. COUNTY WILL REMOVE GUARDRAIL AS PART OF THE KNOXVILLE ROAD DAY LABOR IMPROVEMENTS PROJECT. COORDINATE WITH COUNTY REGARDING SCHEDULING OF WORK.
- TRAFFIC CONTROL IS OUTLINED IN THE SPECIAL PROVISION TRAFFIC CONTROL AND PROTECTION, (SPECIAL).
- FOR STABILIZATION, ALL TYPE III BARRICADES SHALL REQUIRE A MINIMUM OF FOUR SANDBAGS PER BARRICADE.

TYPICAL SECTION



PROPOSED TYPICAL ROADWAY SECTION - GUARDRAIL

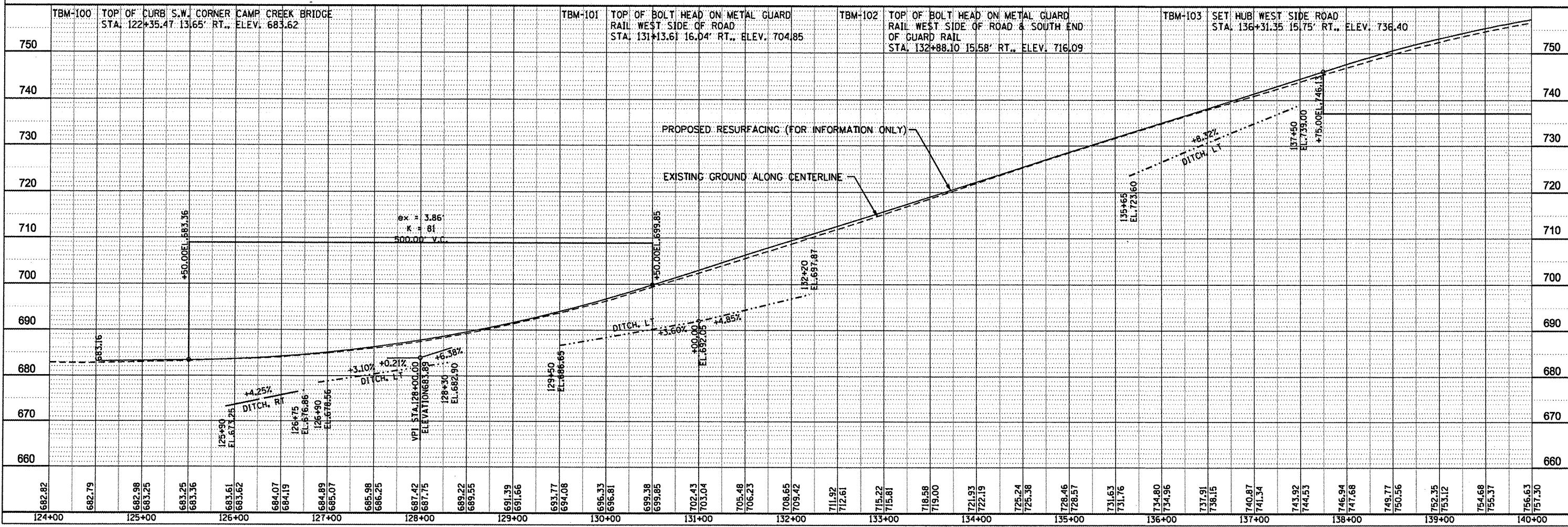
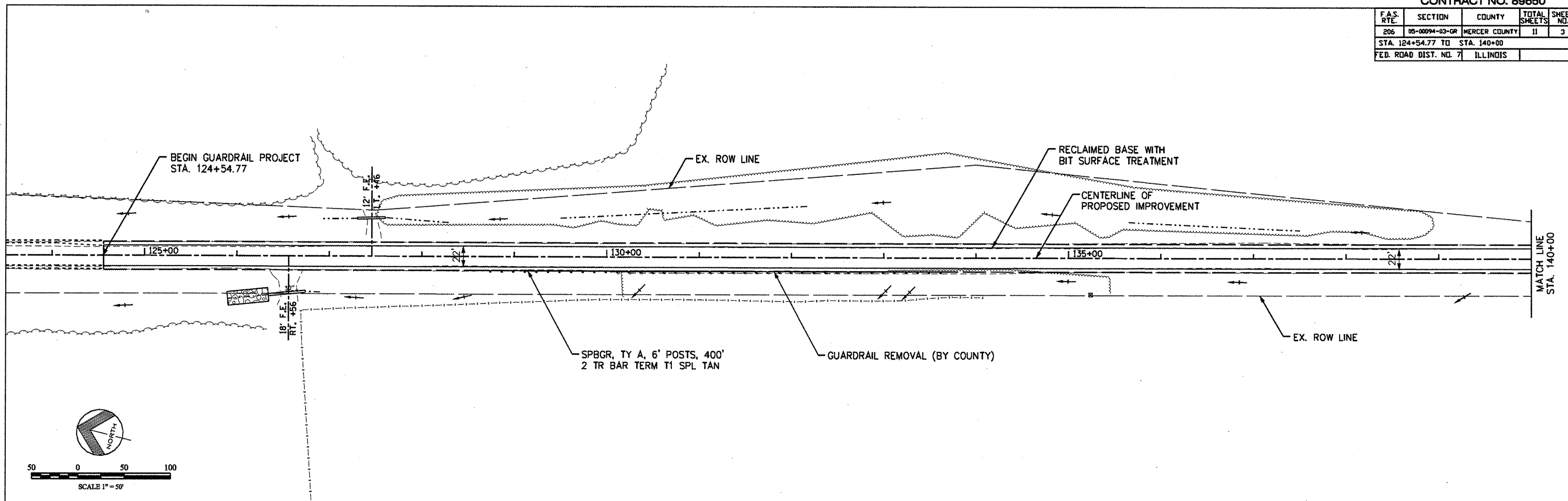
STA. 124+54.77 TO STA. 194+01.98
 STA. 203+61.70 TO STA. 243+80.57
 STA. 245+61.12 TO STA. 257+10.06

* SEE STD DETAIL FOR HINGE POINT LOCATION AT GUARDRAIL.
 RT STA. 128+62.5 - 133+62.5
 LT STA. 178+72.5 - 182+60.0
 LT STA. 190+38.5 - 191+88.5
 RT STA. 233+85 - 243+22.5
 LT STA. 234+68 - 243+55.5
 RT STA. 243+52 - 243+80.6
 LT STA. 245+75.7 - 256+63.2
 RT STA. 245+75.7 - 256+75.8

GENERAL NOTES, TYPICAL SECTION, SUMMARY AND SCHEDULE OF QUANTITIES

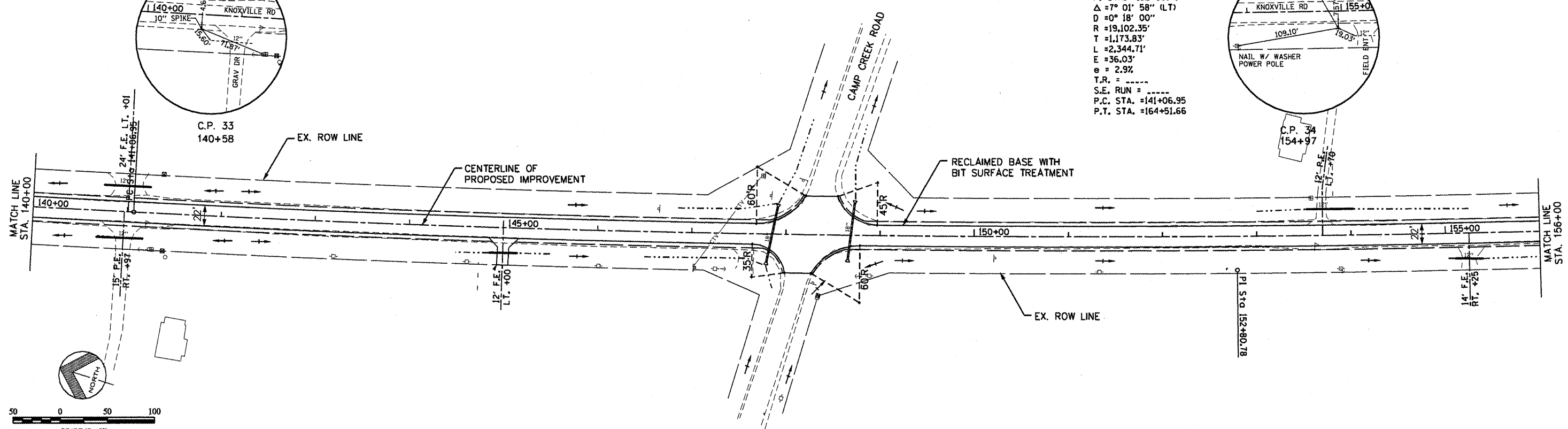
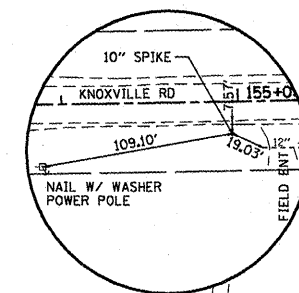
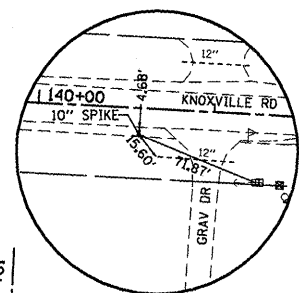
SECTION 05-00094-03-GR
 F.A.S. RTE. 206, STA. 124+54.77 TO 257+10.06
 RICHLAND GROVE TOWNSHIP
 MERCER COUNTY

F.A.S. RTE.	SECTION	COUNTY	TOTAL SHEETS	SHEET NO.
206	05-00094-03-02	MERCER COUNTY	11	3
STA. 124+54.77 TO STA. 140+00				
FED. ROAD DIST. NO. 7 ILLINOIS				



F.A.S. RTE.	SECTION	COUNTY	TOTAL SHEETS	SHEET NO.
206	05-0094-03-GR	MERCER COUNTY	11	4
STA. 140+00 TO STA. 156+00				
FED. ROAD DIST. NO. 7 ILLINOIS				

PROP. CURVEKNOX-1
 PI STA. =152+80.78
 $\Delta = 7^\circ 01' 58''$ (LT)
 $D = 0^\circ 18' 00''$
 $R = 19,102.35'$
 $T = 1,173.83'$
 $L = 2,344.71'$
 $E = 36.03'$
 $e = 2.3\%$
 $T.R. = \dots$
 $S.E. RUN = \dots$
 $P.C. STA. = 141+06.95$
 $P.T. STA. = 164+51.66$



Station	Elevation	Notes
140+00	756.63	
140+50	751.30	VPI STA. 140+50.00 ELEVATION 763.68
141+00	759.37	
141+00	758.92	
141+00	759.79	
141+00	760.23	
142+00	760.74	
142+00	761.22	
142+00	761.33	
142+00	761.90	
142+00	761.54	
142+00	762.26	
143+00	761.40	
143+00	762.31	
143+00	761.32	
143+00	762.08	
144+00	761.21	
144+00	761.81	
144+00	761.06	
144+00	761.54	
145+00	760.92	
145+00	761.28	
145+00	760.75	
145+00	761.01	
146+00	760.49	
146+00	760.74	
146+00	760.15	
146+00	760.48	
147+00	759.83	
147+00	760.21	
147+00	759.43	
147+00	759.94	
148+00	759.15	
148+00	759.68	
148+00	758.79	
148+00	759.41	
149+00	758.42	
149+00	759.14	
149+00	758.08	
149+00	758.87	
150+00	757.85	
150+00	758.61	
150+00	757.57	
150+00	758.34	
151+00	757.31	
151+00	758.07	
151+00	757.20	
151+00	757.81	
152+00	757.07	
152+00	757.54	
152+00	756.88	
152+00	757.27	
153+00	756.66	
153+00	757.01	
153+00	756.34	
153+00	756.74	
154+00	756.01	
154+00	756.47	
154+00	755.73	
154+00	756.20	
155+00	755.45	
155+00	755.94	
155+00	755.20	
155+00	755.67	
156+00	754.98	
156+00	755.41	

TBM-104 STOP OF CONCRETE R.O.W. MONUMENT ON WEST SIDE OF KNOXVILLE ROAD 20' ± SOUTH OF C.P. 33 STA. 141+39.22 38.94' RT., ELEV. 763.23

TBM-105 PK NAIL IN POWER POLE S.W. CORNER OF KNOXVILLE ROAD & CAMP CREEK ROAD STA. 148+89.08 42.68' RT., ELEV. 758.42

PROPOSED RESURFACING (FOR INFORMATION ONLY)

EXISTING GROUND ALONG CENTERLINE

DITCH, RT -0.45%

DITCH, LT -1.43%

DITCH, RT -0.92%

DITCH, LT -0.40%

DITCH, RT -0.40%

$e_x = -4.76'$
 $k = 80$
 $550.00'$ V.C.

+25.00' EL. 762.21

144+50 EL. 758.95 DITCH, RT

145+50 EL. 758.50 DITCH, RT

146+50 EL. 757.85 DITCH, RT

147+80 EL. 756.65 DITCH, RT

147+80 EL. 755.99 DITCH, LT

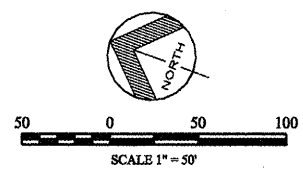
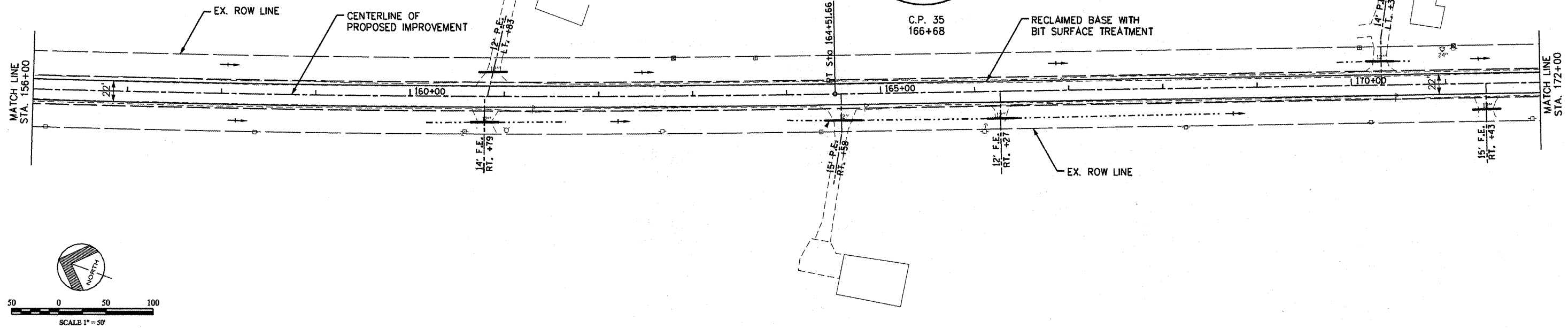
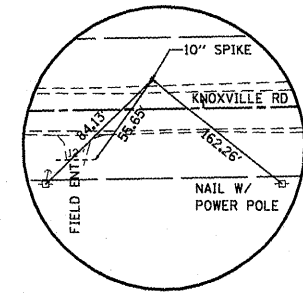
153+00 EL. 753.55 DITCH, LT

155+25 EL. 752.66 DITCH, RT

155+40 EL. 753.79 DITCH, RT

156+00 EL. 753.39 DITCH, RT

F.A.S. RTE.	SECTION	COUNTY	TOTAL SHEETS	SHEET NO.
206	05-0094-03-GR	MERCER COUNTY	11	5
STA. 156+00 TO STA. 172+00				
FED. ROAD DIST. NO. 7 ILLINOIS				



Station	Elevation	Notes
156+00	754.98	
156+00	755.41	
156+00	754.71	
156+00	755.14	
157+00	754.44	VPI STA. 157+00.00 ELEVATION 754.87
157+00	754.89	
157+00	754.05	
157+00	754.63	
158+00	753.73	
158+00	754.38	
159+00	753.50	
159+00	754.14	
159+00	753.26	
159+00	753.89	
160+00	753.01	
160+00	753.65	
160+00	752.74	
160+00	753.40	
160+00	752.56	
160+00	753.16	
161+00	752.34	
161+00	752.92	
161+00	752.06	
161+00	752.67	
162+00	751.77	
162+00	752.43	
162+00	751.67	
162+00	752.18	
163+00	751.50	
163+00	751.94	
163+00	751.29	
163+00	751.69	
164+00	751.10	
164+00	751.45	
164+00	750.92	
164+00	751.21	
165+00	750.66	
165+00	750.96	
165+00	750.31	
165+00	750.72	
166+00	750.06	
166+00	750.47	
166+00	749.88	
166+00	750.23	
167+00	749.65	
167+00	749.98	
167+00	749.41	
167+00	749.74	
168+00	749.17	
168+00	749.50	
168+00	748.87	
168+00	749.25	
169+00	748.58	
169+00	749.01	
169+00	748.27	
169+00	748.76	
170+00	747.93	
170+00	748.46	
170+00	747.54	
170+00	748.03	
171+00	747.01	
171+00	747.49	
171+00	746.42	
171+00	746.82	
172+00	745.68	
172+00	746.04	

TBM-106 PK NAIL IN POWER POLE WEST SIDE OF KNOXVILLE ROAD. 1ST POLE NORTH OF HOUSE ON EAST SIDE OF ROAD STA. 158+35.49 39.94' RT., ELEV. 752.93

TBM-107 PK NAIL IN POWER POLE ON WEST SIDE OF KNOXVILLE ROAD, NORTH SIDE DRIVEWAY TO BRICK HOUSE (1546) STA. 164+36.2 38.53' RT., ELEV. 750.48

TBM-108 PK NAIL IN POWER POLE ON WEST SIDE OF KNOXVILLE ROAD, SOUTH SIDE OF FIELD ENT. ACROSS FROM HOUSE W/ PRANCING HORSE CUTOUTS AT DRIVEWAY STA. 171+91.25 37.03' RT., ELEV. 746.78

PROPOSED RESURFACING (FOR INFORMATION ONLY)
EXISTING GROUND ALONG CENTERLINE

ex = 0.02
K = 6613
100.00' V.C.

ex = -0.54
K = 208
100.00' V.C.

DITCH, RT

DITCH, RT

DITCH, LT

0.53%

-0.49%

-0.78%

-0.50%

-1.10%

-0.40%

-0.49%

-1.93%

+50.00EL.754.14

160+15 EL.750.60

161+65 EL.749.48

164+00 EL.748.65

165+00 EL.748.19

166+00 EL.747.05

168+80 EL.746.01

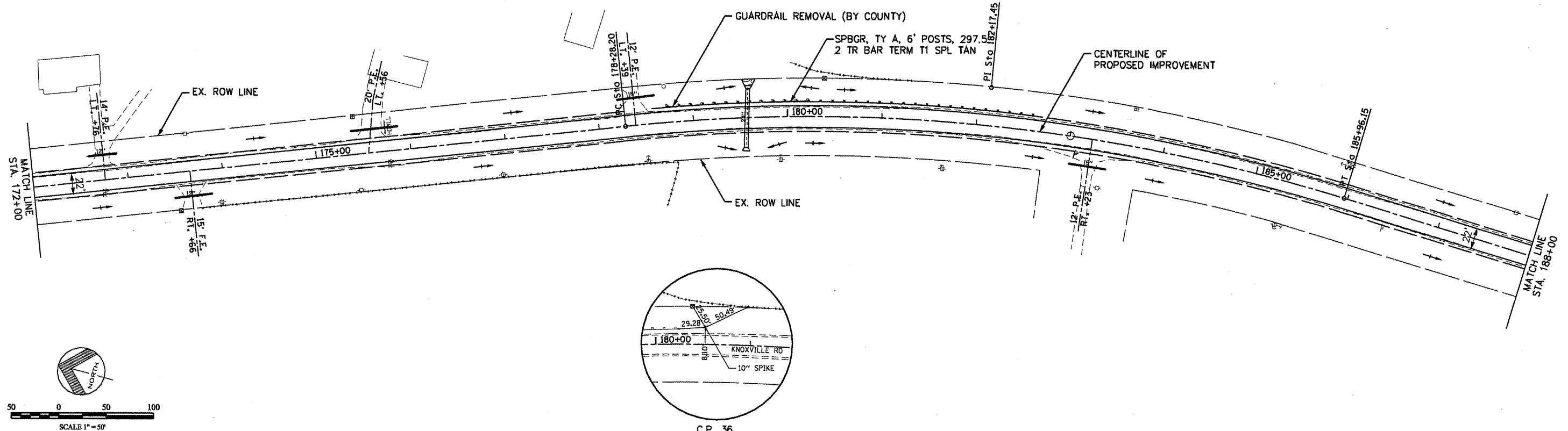
+50.00EL.748.76

169+85 EL.745.50

170+65 EL.745.18

VPI STA. 171+00.00 ELEVATION 748.03

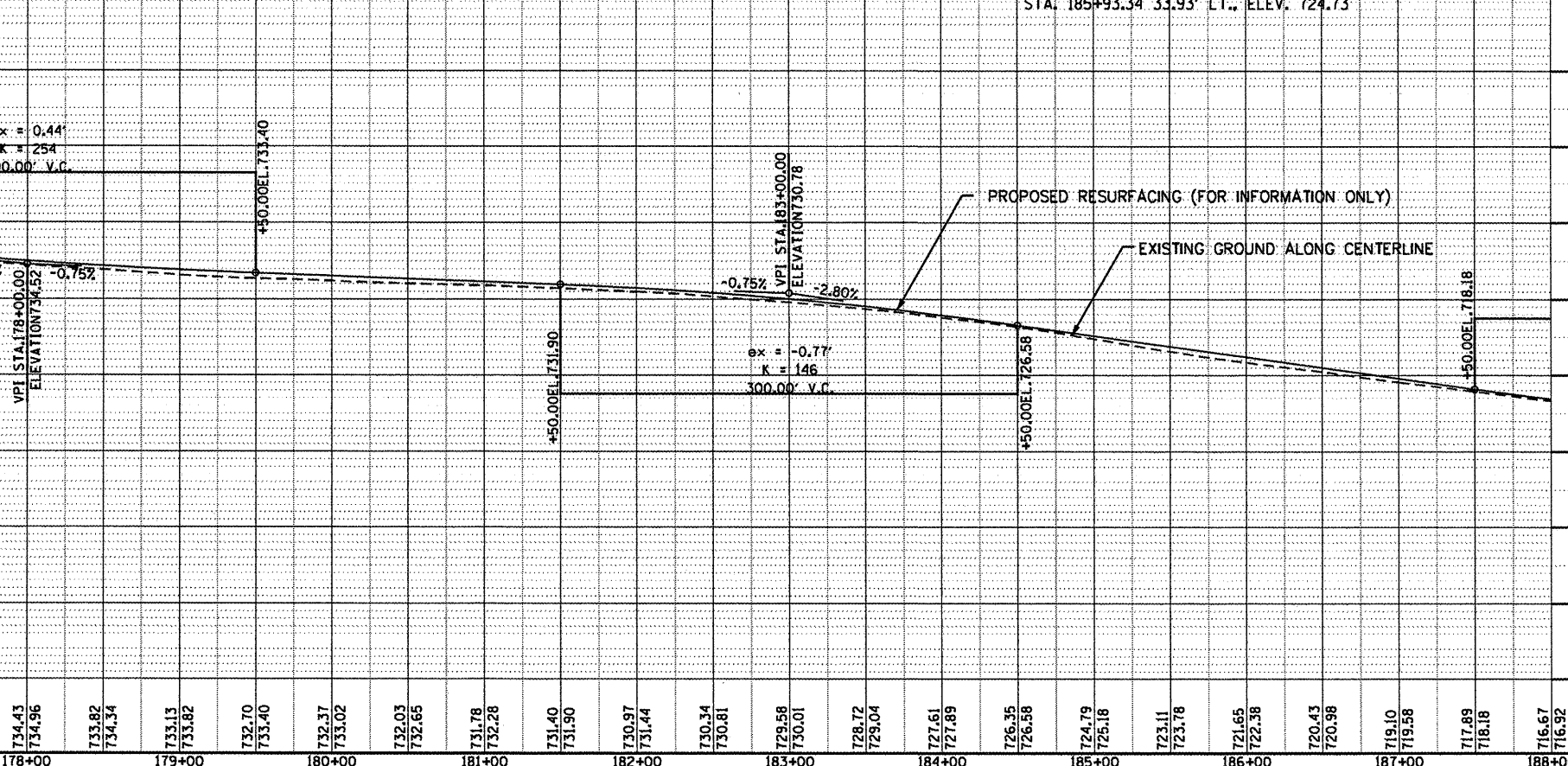
F.A.S. RTE.	SECTION	COUNTY	TOTAL SHEETS	SHEET NO.
206	05-00094-03-GR	MERCER COUNTY	11	6
STA. 172+00 TO STA. 188+00				
FED. ROAD DIST. NO. 7 ILLINOIS				



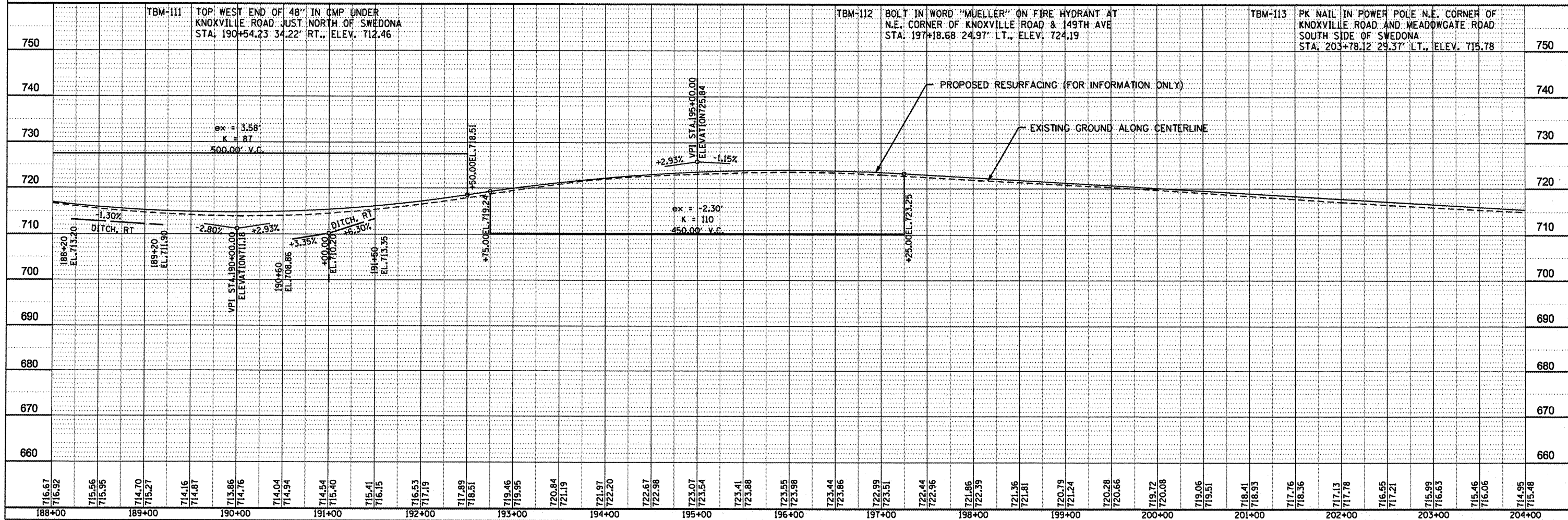
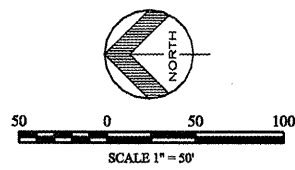
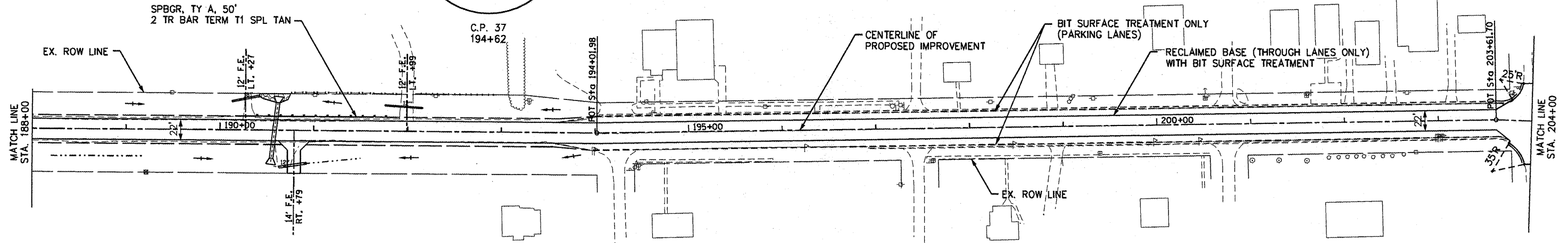
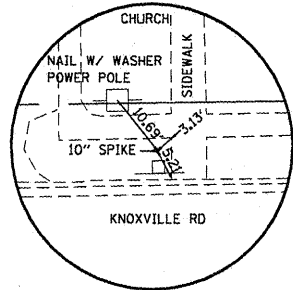
Station	Elevation	Notes
172+00	745.68	
172+00	746.04	
173+00	744.88	
173+00	745.13	
173+00	743.95	
173+00	744.17	
174+00	743.04	
174+00	743.20	
174+00	742.09	
174+00	742.24	
174+00	740.96	
174+00	741.27	
175+00	739.84	
175+00	740.31	
175+00	738.92	
175+00	739.35	
175+00	737.88	
175+00	738.38	
175+00	736.84	
175+00	737.42	
175+00	735.95	
175+00	736.50	
175+00	735.15	
175+00	735.68	
176+00	734.43	
176+00	734.96	
176+00	733.82	
176+00	734.34	
176+00	733.13	
176+00	733.82	
176+00	732.70	
176+00	733.40	
176+00	732.37	
176+00	733.02	
176+00	732.03	
176+00	732.85	
176+00	731.78	
176+00	732.28	
176+00	731.40	
176+00	731.90	
176+00	730.97	
176+00	731.44	
176+00	730.34	
176+00	730.81	
176+00	729.58	
176+00	730.01	
176+00	728.72	
176+00	729.04	
176+00	727.61	
176+00	727.89	
176+00	726.35	
176+00	726.58	
176+00	724.79	
176+00	725.18	
176+00	723.11	
176+00	723.78	
176+00	721.65	
176+00	722.38	
176+00	720.43	
176+00	720.98	
176+00	719.10	
176+00	719.58	
176+00	717.89	
176+00	718.18	
176+00	716.57	
176+00	716.92	

TBM-109 TOP OF NORTH MOST 1-BEAM POST OF GUARD RAIL ON EAST SIDE OF KNOXVILLE ROAD JUST NORTH OF C.P. 36 STA. 178+73.40 16.45' LT., ELEV. 735.39

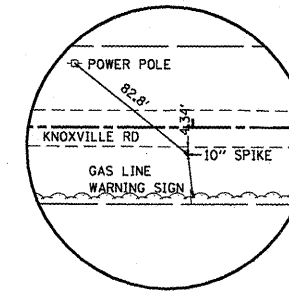
TBM-110 PK NAIL IN POWER POLE ON EAST SIDE OF KNOXVILLE ROAD NORTH OF SWEDONA WHERE POWER LINE CROSSES FROM THE EAST SIDE OF ROAD TO THE WEST SIDE STA. 185+93.34 33.93' LT., ELEV. 724.73



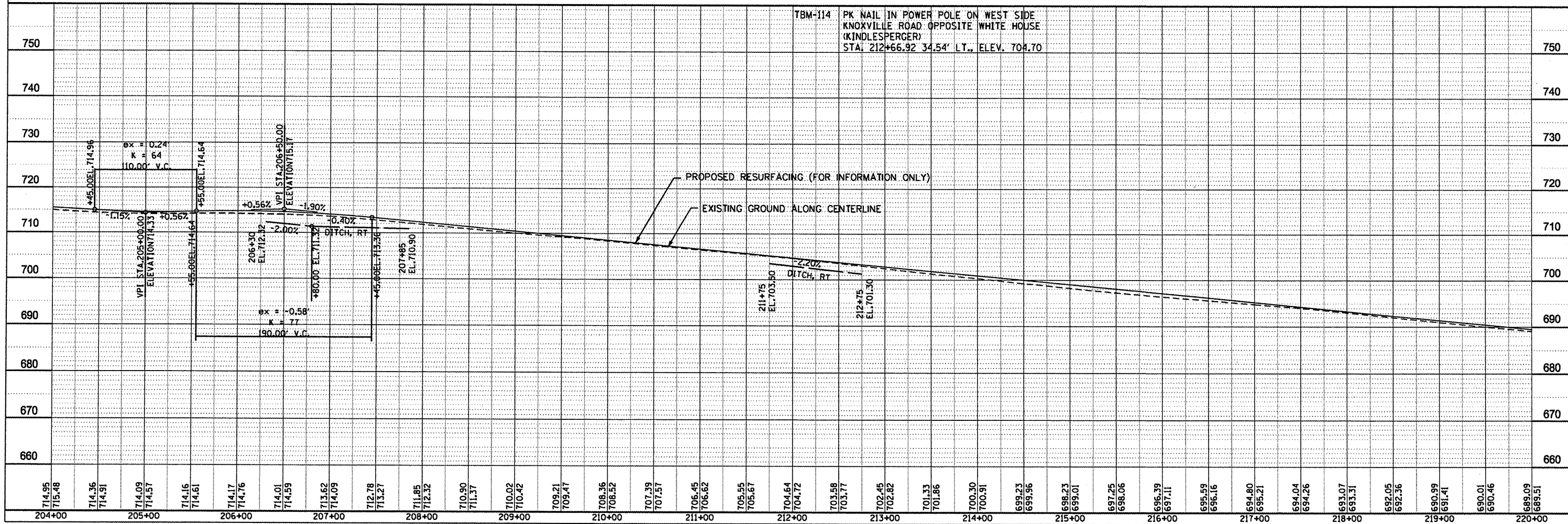
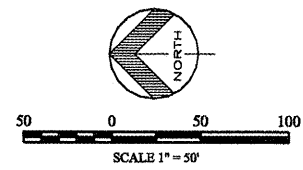
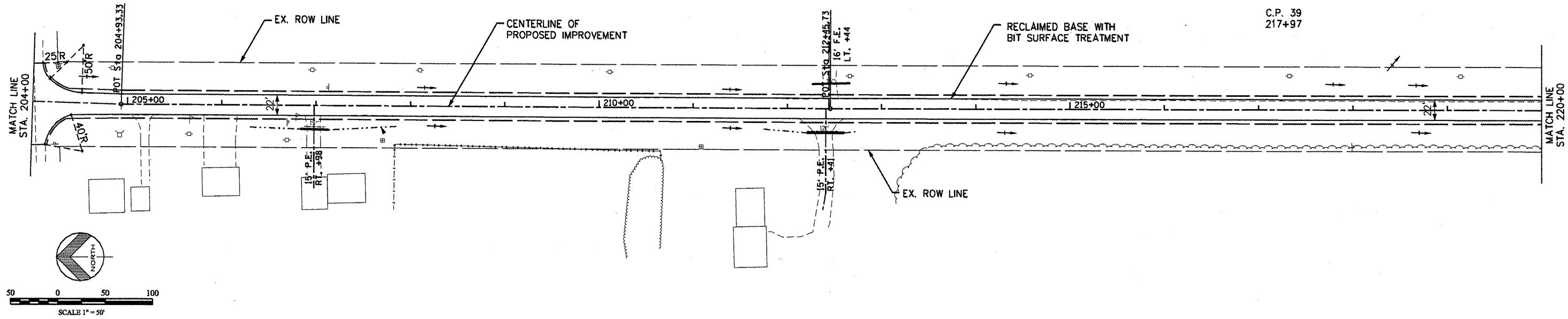
F.A.S. RTE.	SECTION	COUNTY	TOTAL SHEETS	SHEET NO.
206	05-0094-03-0P	MERCER COUNTY	11	7
STA. 188+00 TO STA. 204+00				
FED. ROAD DIST. NO. 7 ILLINOIS				



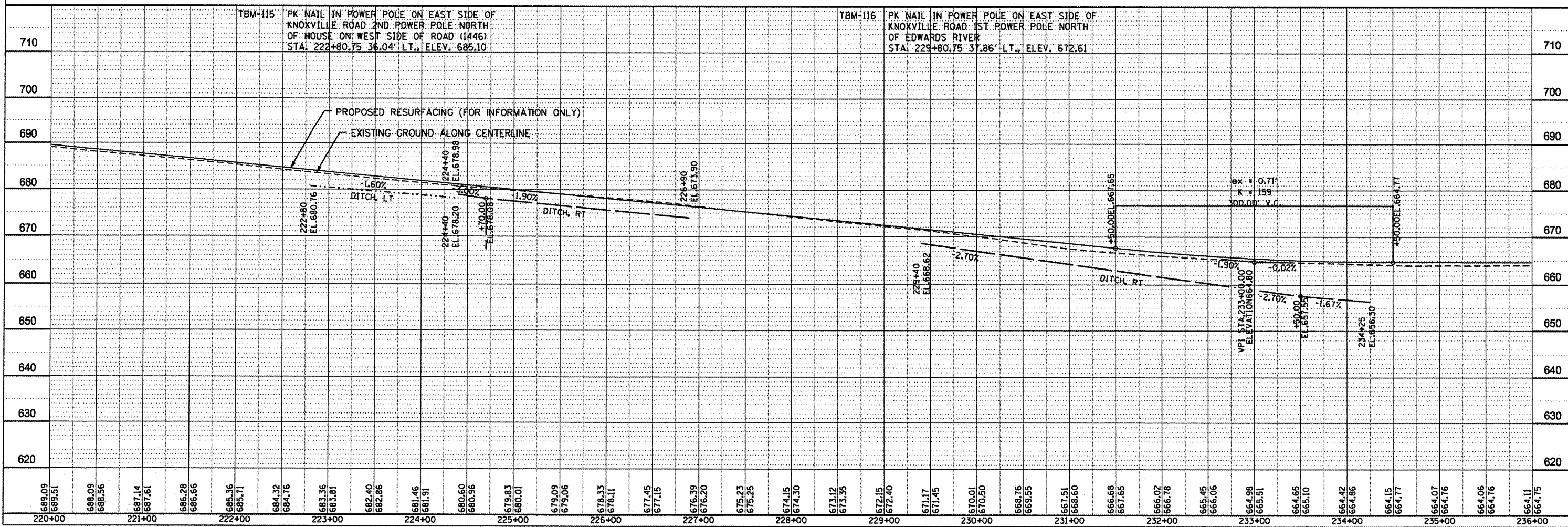
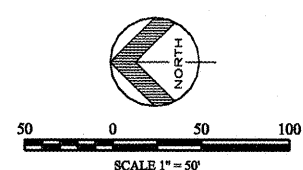
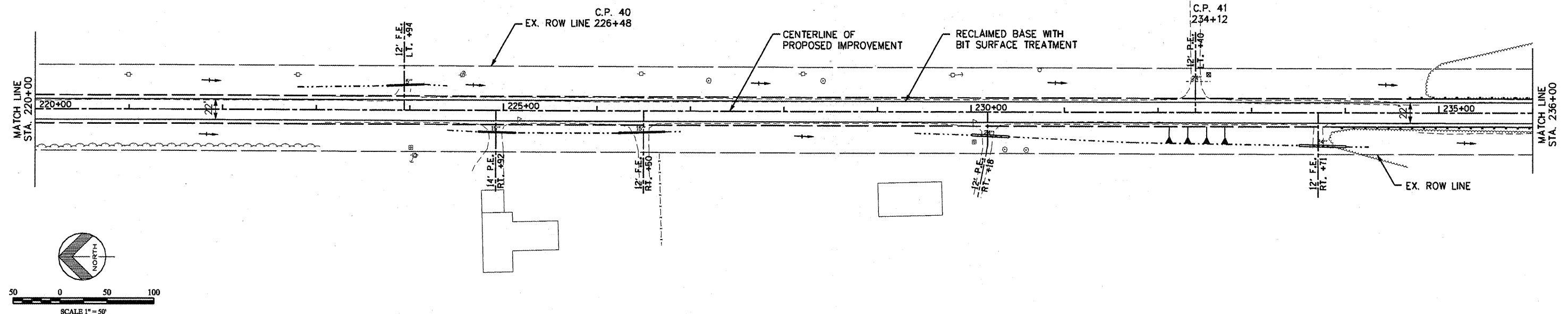
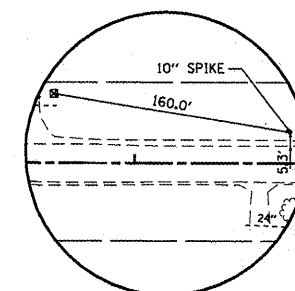
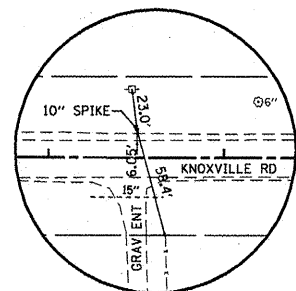
F.A.S. RTE.	SECTION	COUNTY	TOTAL SHEETS	SHEET NO.
206	05-0094-03-GR	MERCER COUNTY	11	8
STA. 204+00 TO STA. 220+00				
FED. ROAD DIST. NO. 7		ILLINOIS		



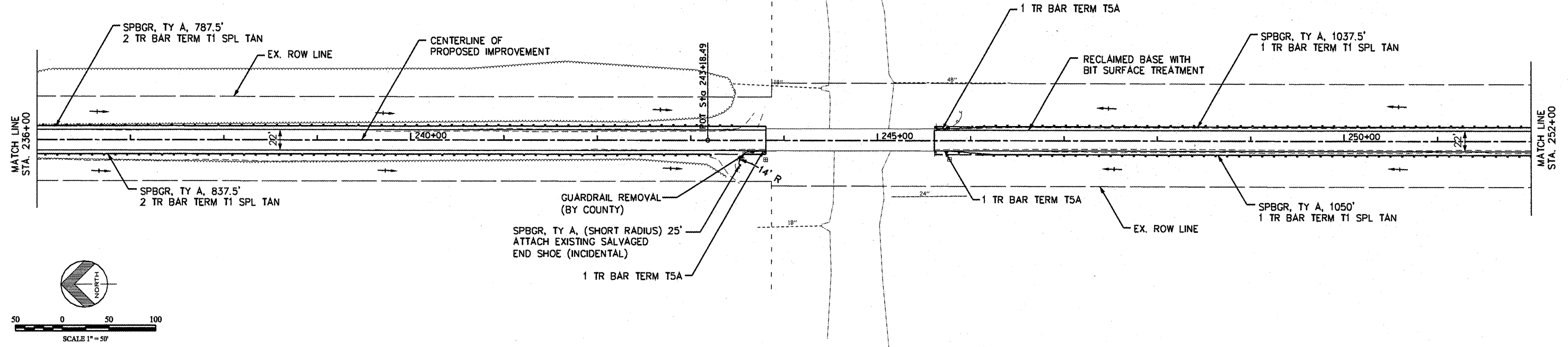
C.P. 39
217+97



F.A.S. RTE.	SECTION	COUNTY	TOTAL SHEETS	SHEET NO.
206	05-00094-03-GR	MERCER COUNTY	11	9
STA. 220+00 TO STA. 136+00				
FED. ROAD DIST. NO. 7 ILLINOIS				



F.A.S. RTE.	SECTION	COUNTY	TOTAL SHEETS	SHEET NO.
206	05-00094-03-GR	MERCER COUNTY	11	10
STA. 236+00 TO STA. 252+00				
FED. ROAD DIST. NO. 7 ILLINOIS				



710	TBM-117	HUB SET EAST SIDE KNOXVILLE ROAD APPROX. 400' NORTH OF EDWARDS RIVER STA. 236+88.07 13.50' LT., ELEV. 663.38	TBM-118	HUB SET EAST SIDE KNOXVILLE ROAD APPROX. 200' NORTH OF EDWARDS RIVER STA. 239+76.34 14.35' LT., ELEV. 664.29	TBM-119	CUT "X" N.E. CORNER EDWARDS RIVER BRIDGE STA. 243+80.36 15.24' LT., ELEV. 668.39	710
690	PROPOSED RESURFACING (FOR INFORMATION ONLY) EXISTING GROUND ALONG CENTERLINE						690
680	BRIDGE OMISSION						680
670	VPI STA. 238+65.00 ELEVATION 664.70 VPI STA. 243+25.00 ELEVATION 667.62 VPI STA. 246+35.00 ELEVATION 667.46 VPI STA. 250+50.00 ELEVATION 665.00						670
660	BRIDGE OMISSION						660
650	BRIDGE OMISSION						650
640	BRIDGE OMISSION						640
630	BRIDGE OMISSION						630
620	BRIDGE OMISSION						620
664.11	664.15	664.18	664.21	664.24	664.27	664.30	664.33
236+00	237+00	238+00	239+00	240+00	241+00	242+00	243+00
664.12	664.16	664.19	664.22	664.25	664.28	664.31	664.34
236+00	237+00	238+00	239+00	240+00	241+00	242+00	243+00
664.13	664.17	664.20	664.23	664.26	664.29	664.32	664.35
236+00	237+00	238+00	239+00	240+00	241+00	242+00	243+00
664.14	664.18	664.21	664.24	664.27	664.30	664.33	664.36
236+00	237+00	238+00	239+00	240+00	241+00	242+00	243+00
664.15	664.19	664.22	664.25	664.28	664.31	664.34	664.37
236+00	237+00	238+00	239+00	240+00	241+00	242+00	243+00
664.16	664.20	664.23	664.26	664.29	664.32	664.35	664.38
236+00	237+00	238+00	239+00	240+00	241+00	242+00	243+00
664.17	664.21	664.24	664.27	664.30	664.33	664.36	664.39
236+00	237+00	238+00	239+00	240+00	241+00	242+00	243+00
664.18	664.22	664.25	664.28	664.31	664.34	664.37	664.40
236+00	237+00	238+00	239+00	240+00	241+00	242+00	243+00
664.19	664.23	664.26	664.29	664.32	664.35	664.38	664.41
236+00	237+00	238+00	239+00	240+00	241+00	242+00	243+00
664.20	664.24	664.27	664.30	664.33	664.36	664.39	664.42
236+00	237+00	238+00	239+00	240+00	241+00	242+00	243+00
664.21	664.25	664.28	664.31	664.34	664.37	664.40	664.43
236+00	237+00	238+00	239+00	240+00	241+00	242+00	243+00
664.22	664.26	664.29	664.32	664.35	664.38	664.41	664.44
236+00	237+00	238+00	239+00	240+00	241+00	242+00	243+00
664.23	664.27	664.30	664.33	664.36	664.39	664.42	664.45
236+00	237+00	238+00	239+00	240+00	241+00	242+00	243+00
664.24	664.28	664.31	664.34	664.37	664.40	664.43	664.46
236+00	237+00	238+00	239+00	240+00	241+00	242+00	243+00
664.25	664.29	664.32	664.35	664.38	664.41	664.44	664.47
236+00	237+00	238+00	239+00	240+00	241+00	242+00	243+00
664.26	664.30	664.33	664.36	664.39	664.42	664.45	664.48
236+00	237+00	238+00	239+00	240+00	241+00	242+00	243+00
664.27	664.31	664.34	664.37	664.40	664.43	664.46	664.49
236+00	237+00	238+00	239+00	240+00	241+00	242+00	243+00
664.28	664.32	664.35	664.38	664.41	664.44	664.47	664.50
236+00	237+00	238+00	239+00	240+00	241+00	242+00	243+00
664.29	664.33	664.36	664.39	664.42	664.45	664.48	664.51
236+00	237+00	238+00	239+00	240+00	241+00	242+00	243+00
664.30	664.34	664.37	664.40	664.43	664.46	664.49	664.52
236+00	237+00	238+00	239+00	240+00	241+00	242+00	243+00
664.31	664.35	664.38	664.41	664.44	664.47	664.50	664.53
236+00	237+00	238+00	239+00	240+00	241+00	242+00	243+00
664.32	664.36	664.39	664.42	664.45	664.48	664.51	664.54
236+00	237+00	238+00	239+00	240+00	241+00	242+00	243+00
664.33	664.37	664.40	664.43	664.46	664.49	664.52	664.55
236+00	237+00	238+00	239+00	240+00	241+00	242+00	243+00
664.34	664.38	664.41	664.44	664.47	664.50	664.53	664.56
236+00	237+00	238+00	239+00	240+00	241+00	242+00	243+00
664.35	664.39	664.42	664.45	664.48	664.51	664.54	664.57
236+00	237+00	238+00	239+00	240+00	241+00	242+00	243+00
664.36	664.40	664.43	664.46	664.49	664.52	664.55	664.58
236+00	237+00	238+00	239+00	240+00	241+00	242+00	243+00
664.37	664.41	664.44	664.47	664.50	664.53	664.56	664.59
236+00	237+00	238+00	239+00	240+00	241+00	242+00	243+00
664.38	664.42	664.45	664.48	664.51	664.54	664.57	664.60
236+00	237+00	238+00	239+00	240+00	241+00	242+00	243+00
664.39	664.43	664.46	664.49	664.52	664.55	664.58	664.61
236+00	237+00	238+00	239+00	240+00	241+00	242+00	243+00
664.40	664.44	664.47	664.50	664.53	664.56	664.59	664.62
236+00	237+00	238+00	239+00	240+00	241+00	242+00	243+00
664.41	664.45	664.48	664.51	664.54	664.57	664.60	664.63
236+00	237+00	238+00	239+00	240+00	241+00	242+00	243+00
664.42	664.46	664.49	664.52	664.55	664.58	664.61	664.64
236+00	237+00	238+00	239+00	240+00	241+00	242+00	243+00
664.43	664.47	664.50	664.53	664.56	664.59	664.62	664.65
236+00	237+00	238+00	239+00	240+00	241+00	242+00	243+00
664.44	664.48	664.51	664.54	664.57	664.60	664.63	664.66
236+00	237+00	238+00	239+00	240+00	241+00	242+00	243+00
664.45	664.49	664.52	664.55	664.58	664.61	664.64	664.67
236+00	237+00	238+00	239+00	240+00	241+00	242+00	243+00
664.46	664.50	664.53	664.56	664.59	664.62	664.65	664.68
236+00	237+00	238+00	239+00	240+00	241+00	242+00	243+00
664.47	664.51	664.54	664.57	664.60	664.63	664.66	664.69
236+00	237+00	238+00	239+00	240+00	241+00	242+00	243+00
664.48	664.52	664.55	664.58	664.61	664.64	664.67	664.70
236+00	237+00	238+00	239+00	240+00	241+00	242+00	243+00
664.49	664.53	664.56	664.59	664.62	664.65	664.68	664.71
236+00	237+00	238+00	239+00	240+00	241+00	242+00	243+00
664.50	664.54	664.57	664.60	664.63	664.66	664.69	664.72
236+00	237+00	238+00	239+00	240+00	241+00	242+00	243+00
664.51	664.55	664.58	664.61	664.64	664.67	664.70	664.73
236+00	237+00	238+00	239+00	240+00	241+00	242+00	243+00
664.52	664.56	664.59	664.62	664.65	664.68	664.71	664.74
236+00	237+00	238+00	239+00	240+00	241+00	242+00	243+00
664.53	664.57	664.60	664.63	664.66	664.69	664.72	664.75
236+00	237+00	238+00	239+00	240+00	241+00	242+00	243+00
664.54	664.58	664.61	664.64	664.67	664.70	664.73	664.76
236+00	237+00	238+00	239+00	240+00	241+00	242+00	243+00
664.55	664.59	664.62	664.65	664.68	664.71	664.74	664.77
236+00	237+00	238+00	239+00	240+00	241+00	242+00	243+00
664.56	664.60	664.63	664.66	664.69	664.72	664.75	664.78
236+00	237+00	238+00	239+00	240+00	241+00	242+00	243+00
664.57	664.61	664.64	664.67	664.70	664.73	664.76	664.79
236+00	237+00	238+00	239+00	240+00	241+00	242+00	243+00
664.58	664.62	664.65	664.68	664.71	664.74	664.77	664.80
236+00	237+00	238+00	239+00	240+00	241+00	242+00	243+00
664.59	664.63	664.66	664.69	664.72	664.75	664.78	664.81
236+00	237+00	238+00	239+00	240+00	241+00	242+00	243+00
664.60	664.64	664.67	664.70	664.73	664.76	664.79	664.82
236+00	237+00	238+00	239+00	240+00	241+00	242+00	243+00
664.61	664.65	664.68	664.71	664.74	664.77	664.80	664.83
236+00	237+00	238+00	239+00	240+00	241+00	242+00	243+00
664.62	664.66	664.69	664.72	664.75	664.78	664.81	664.84
236+00	237+00	238+00	239+00	240+00	241+00	242+00	243+00
664.63	664.67	664.70	664.73	664.76	664.79	664.82	664.85
236+00	237+00	238+00	239+00	240+00	241+00	242+00	243+00
664.64	664.68	664.71	664.74	664.77	664.80	664.83	664.86

