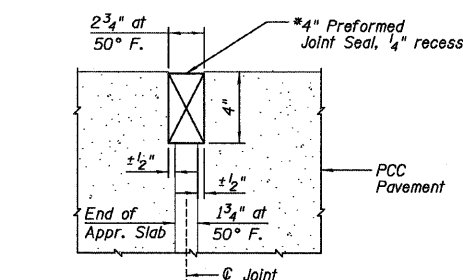
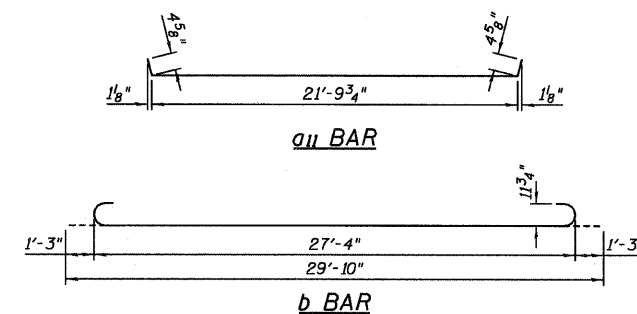


**NORTHEAST APPROACH SLAB  
BILL OF MATERIAL**

Bar	No.	Size	Length	Shape
a10	46	#5	22'-2"	—
a11	25	#4	22'-7"	—
b	51	#9	29'-10"	⌒
b1	20	#4	29'-8"	—
t2	48	#5	10'-3"	—
w2	40	#5	24'-1"	—
Item	Unit	Quantity		
Concrete Structures	Cu. Yd.	7.6		
Concrete Superstructure	Cu. Yd.	33.1		
Reinforcement Bars, Epoxy Coated	Pound	8,530		

**SOUTHWEST APPROACH SLAB  
BILL OF MATERIAL**

Bar	No.	Size	Length	Shape
a10	46	#5	22'-2"	—
a11	25	#4	22'-7"	—
b	51	#9	29'-10"	⌒
b1	20	#4	29'-8"	—
t2	48	#5	10'-3"	—
w2	40	#5	24'-1"	—
Item	Unit	Quantity		
Concrete Structures	Cu. Yd.	7.6		
Concrete Superstructure	Cu. Yd.	33.1		
Reinforcement Bars, Epoxy Coated	Pound	8,530		



**DETAIL A-RIGID PAVEMENT**

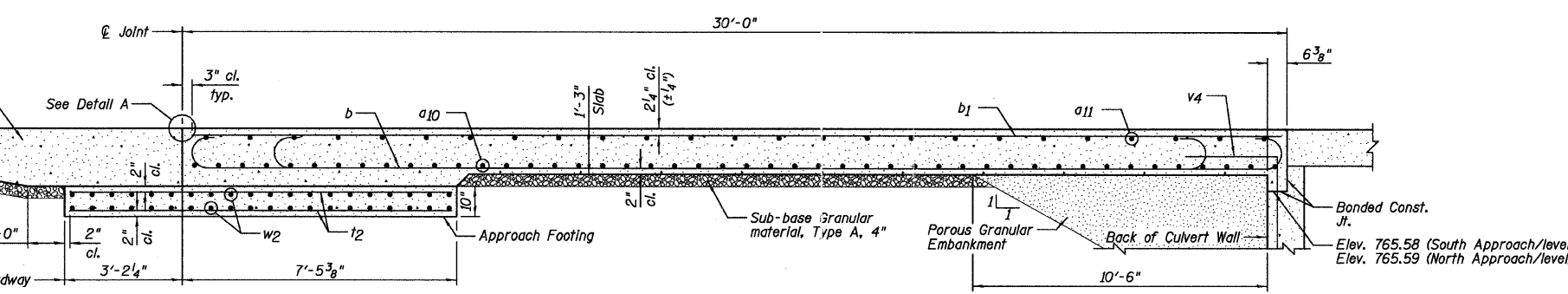
**NOTES:**

- 1) a10 and a11 bar spacings measured parallel to  $\phi$  Roadway.
- 2) Tilt #9 b bars as required to maintain clearance.
- 3) Approach Slab concrete shall be paid for as Concrete Superstructure.
- 4) Approach Footing concrete shall be paid for as Concrete Structures.
- 5) Reinforcement shall be paid for as Reinforcement Bars, Epoxy Coated.
- 6) For v4 bar details, see Sheet C2.
- 7) The Approach Footing maximum applied service bearing pressure (Qmax) = 2.0 ksf.
- 8) Cost of excavation for Approach Footing Included with Concrete Structures.
- 9) Cost of Sub-base Granular Material, Type A beneath the Approach Slab included with Concrete Superstructure.

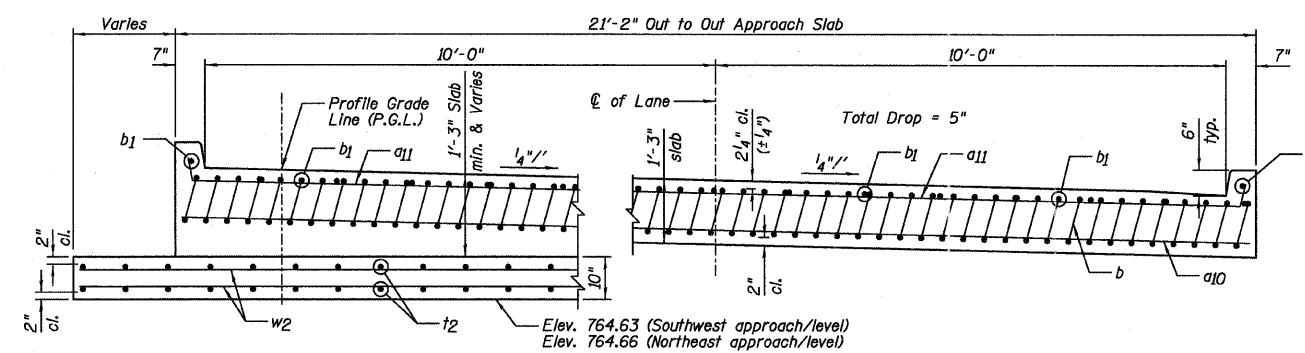
**SOUTHWEST AND NORTHEAST  
APPROACH SLAB  
STRUCTURE NO. 057-7841**

DESIGNED	JCZ
CHECKED	MSW
DRAWN	JWK
CHECKED	MSW

DATE 02/25/11



**SECTION A-A**



**AT APPROACH FOOTING**

**SECTION B-B**

**NEAR CULVERT**

SHEET NO. C6	F.A.P. RTE.	SECTION	COUNTY	TOTAL SHEETS	SHEET NO.
	19 SHEETS	07-00233-00-BR	MCLEAN	40	21
		SN 057-7841	CONTRACT NO. 91422		
		FED. ROAD DIST. NO. 5 ILLINOIS FED. AID PROJECT			