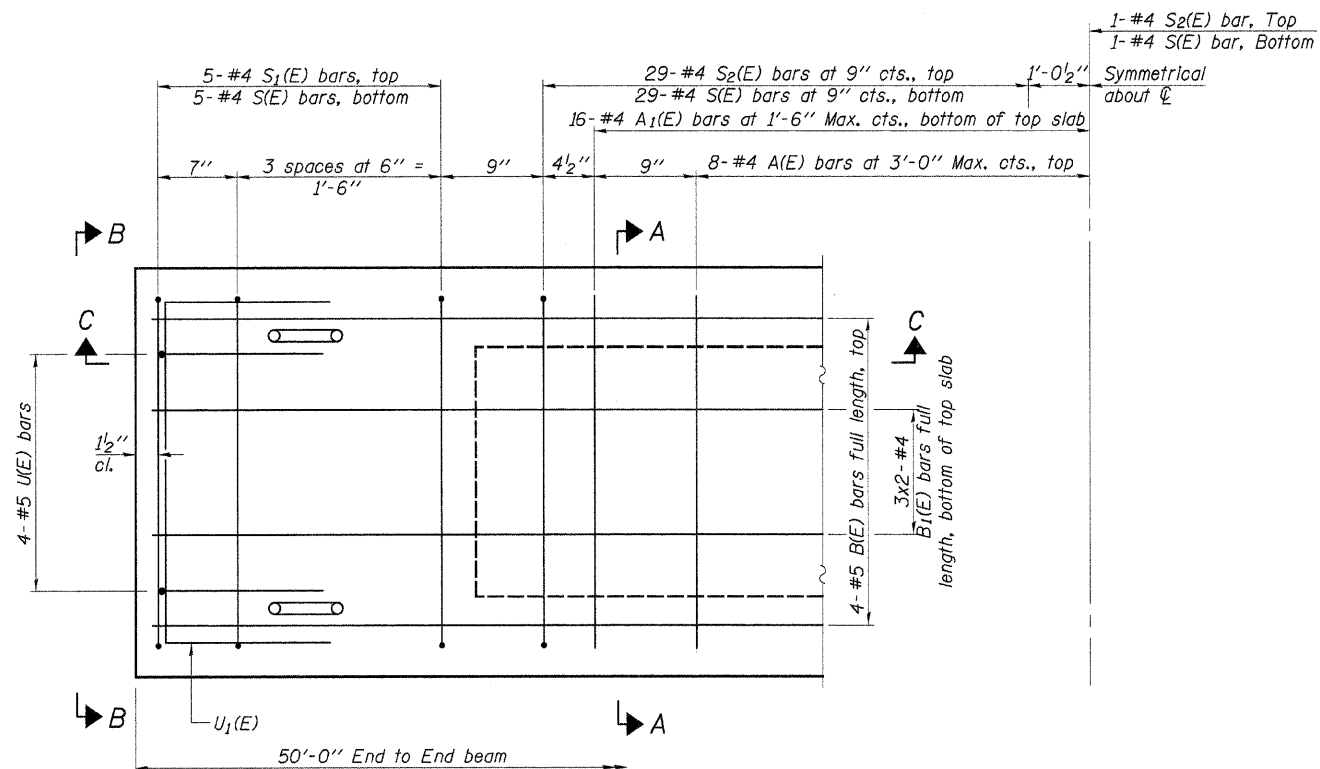


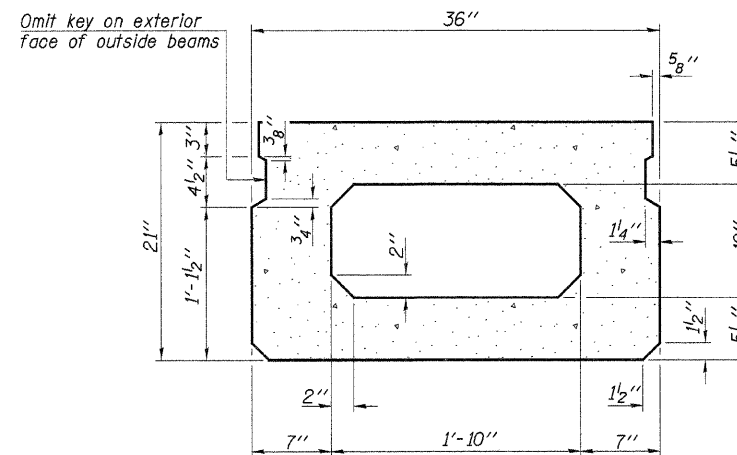
SECTION C-C



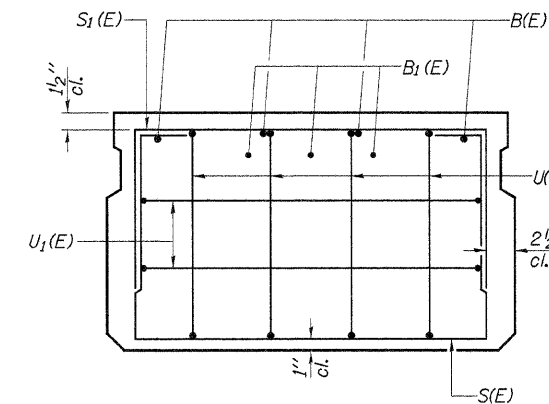
PLAN VIEW

Note: Spacing of S(E) and S2(E) bars may be adjusted up to 4" in the immediate area of the transverse tie diaphragms to miss the block outs for the transverse ties.

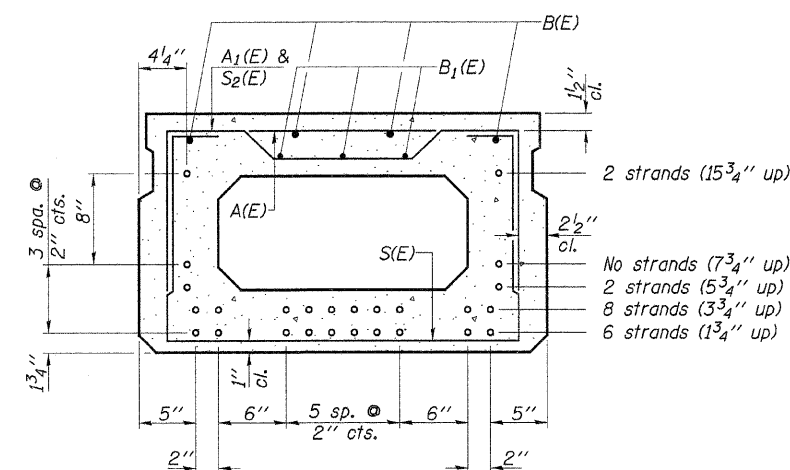
Bars Indicated thus, 3x2-#4 bars etc., indicates 3 lines of bars with 2 lengths per line.



SECTION A-A
(Showing dimensions)



VIEW B-B



Use 18-1/2" φ strands at the locations shown.

SECTION A-A

(Showing reinforcement and permissible strand locations)

Note: Place the number of strands specified in each row symmetrically about the centerline of beam in the permissible strand locations shown.

MIN. BAR LAPS

#4	2'-0"
#5	2'-6"

BAR LIST

ONE BEAM ONLY - SPANS 1 & 3

(For information only)

Bar	No.	Size	Length	Shape
A(E)	15	#4	2'-7"	—
A1(E)	31	#4	2'-10"	—
B(E)	4	#5	49'-8"	—
B1(E)	6	#4	26'-0"	—
S(E)	69	#4	6'-5"	□
S1(E)	10	#4	4'-11"	□
S2(E)	59	#4	5'-2"	□
U(E)	8	#5	4'-0"	□
U1(E)	4	#4	5'-0"	□

Note: See sheet 7 for additional details and Bill of Material. Reinforcement bars designated (E) shall be epoxy coated.

21" X 36" PPC DECK BEAM - SPANS 1 & 3

S.N. 021-4307

DESIGNED	A.L.S.
CHECKED	A.R.K.
DRAWN	S.A.P.
CHECKED	A.L.S. & A.R.K.

PDB-2136-0

03-12-10

FEHR-GRAHAM & ASSOCIATES, LLC
ENGINEERING AND SCIENCE CONSULTANTS
FREEPORT, IL ROCKFORD, IL ROCHELLE, IL MONROE, WI SPRINGFIELD, IL
4440 ASH GROVE SPRINGFIELD, IL 62711 (217)-793-8600 www.fehr-graham.com

TWP. RTE.	SECTION	COUNTY	TOTAL SHEETS	SHEET NO.
56	09-05123-01-BR	DOUGLAS	19	6
GARRETT ROAD DIST. ILLINOIS			CONTRACT NO. 91433	