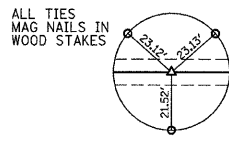
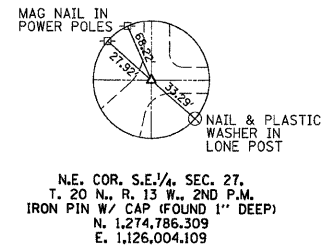


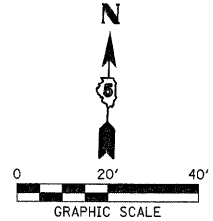
TRIMBLE TRUST  
S 1/2, NE 1/4, SEC 27, T. 20 N., R. 13 W., 2ND P.M.



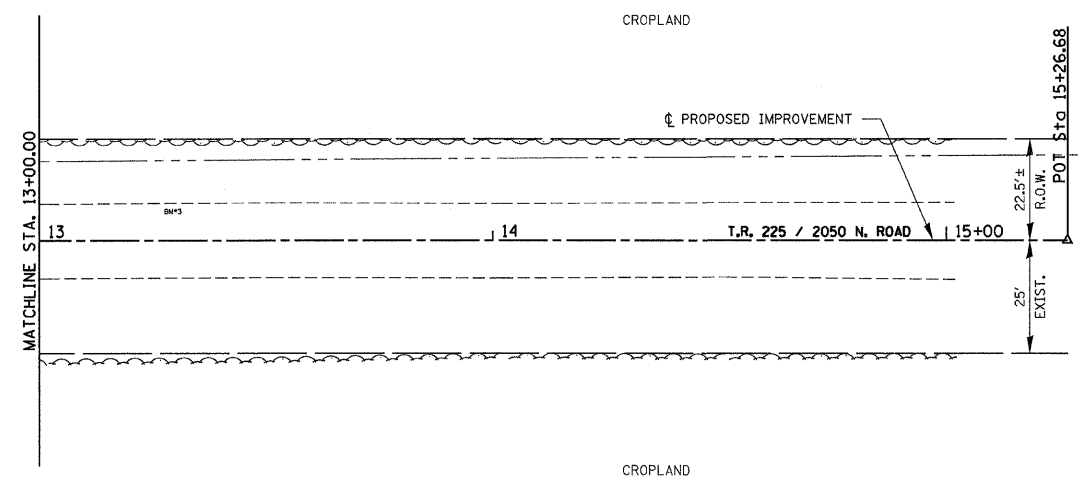
P.O.T. STA. 15+26.68  
1/2" IRON PIN (SET)  
N. 1,274,889.328  
E. 1,129,200.413



N.E. COR. S.E. 1/4, SEC. 27,  
T. 20 N., R. 13 W., 2ND P.M.  
IRON PIN W/ CAP (FOUND 1" DEEP)  
N. 1,274,786.309  
E. 1,126,004.109



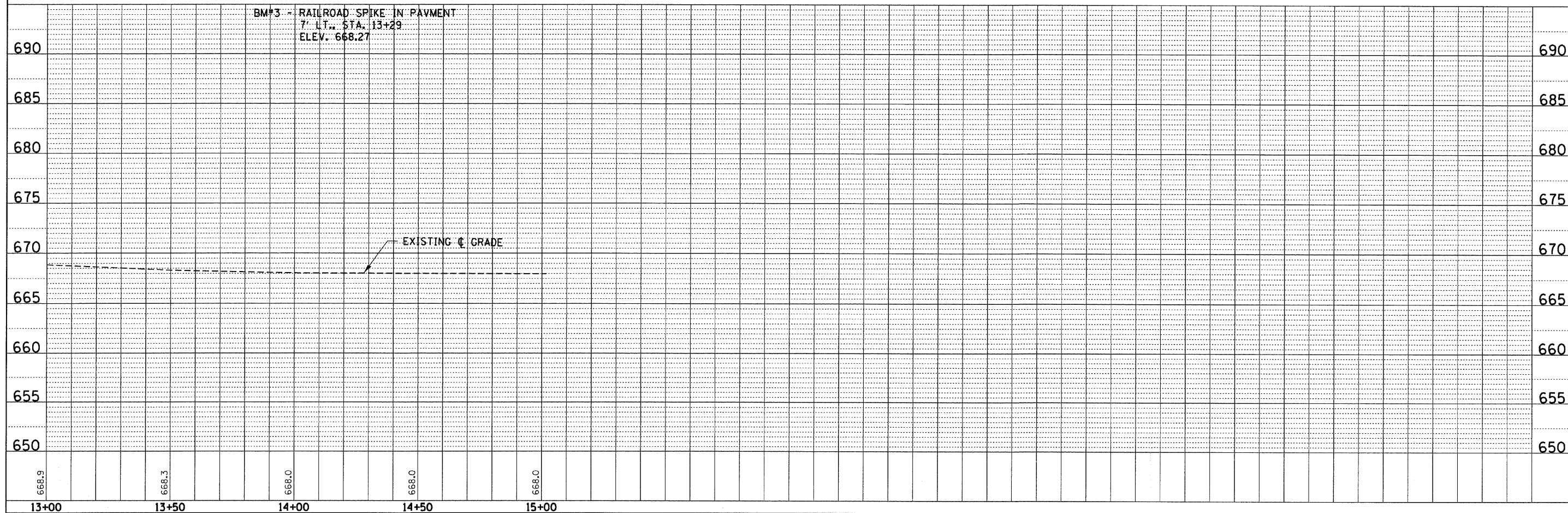
PLAN	SURVEYED	DATE
	PLOTTED	
	NOTED	
	BY	
	NO.	



MARK SHEPHERD FARMS, INC.  
S 1/2, SEC 27, T. 20 N., R. 13 W., 2ND P.M.

BM#3 - RAILROAD SPIKE IN PAVMENT  
7' LT. STA. 13+29  
ELEV. 668.27

PROFILE	SURVEYED	DATE
	PLOTTED	
	NOTED	
	BY	
	NO.	



FILE NAME = 188322-sht-pp3.dgn	USER NAME =	DESIGNED - J.W.F.	REVISED -	<p align="center"><b>STATE OF ILLINOIS</b> <b>VERMILION COUNTY HIGHWAY DEPARTMENT</b></p>	<p align="center"><b>PLAN &amp; PROFILE</b> <b>T.R. 225 / 2050N ROAD</b></p>	T.R.	SECTION	COUNTY	TOTAL SHEETS	SHEET NO.
HAMPTON, LENZINI AND RENWICK, INC. 3055 STEVENSON DRIVE, SUITE 201 SPRINGFIELD, ILLINOIS 62765	PLLOT SCALE =	DRAWN - D.T.M.	REVISED -			225	08-14136-00-BR	VERMILION	21	6
ILLINOIS PROFESSIONAL DESIGN FIRM L5 / PE / SE CORP. 184.000959	PLLOT DATE = 3/2/2011	CHECKED - M.G.B.	REVISED -			OAKWOOD ROAD DISTRICT		CONTRACT NO. 91457		
		DATE - 02/15/11	REVISED -			SCALE: H20xV5	SHEET NO. 3 OF 3 SHEETS	STA. 13+00.00 TO STA. 15+26.68	ILLINOIS FED. AID PROJECT	