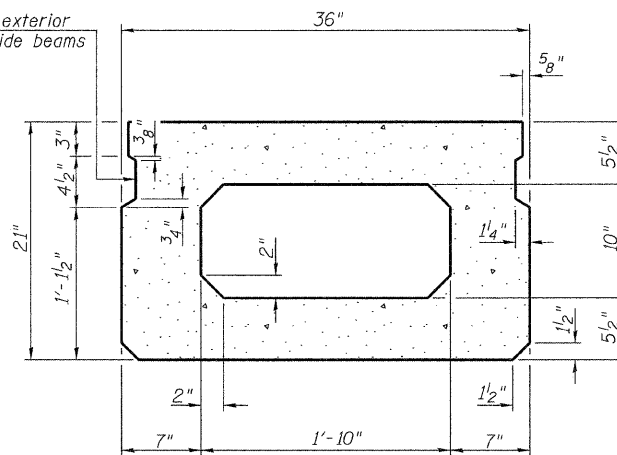


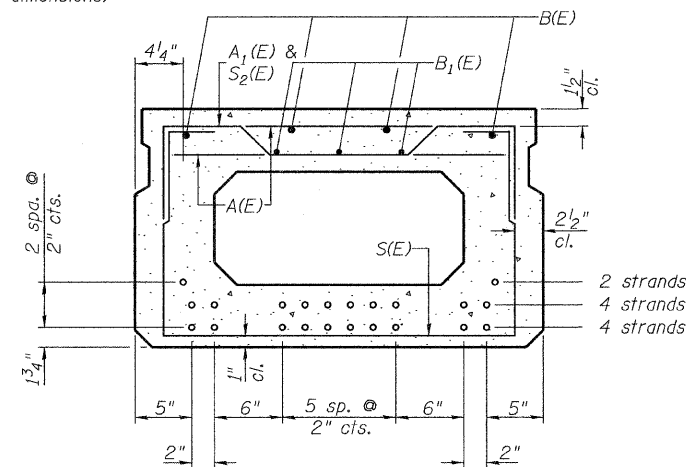
SECTION C-C

**Omit key on exterior face of outside beams



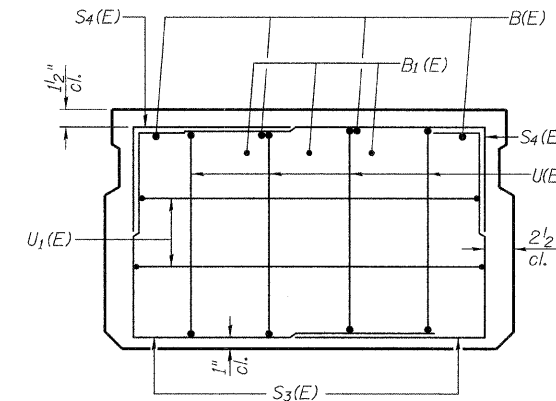
SECTION A-A
(Showing dimensions)

**Rail post anchor devices (Sheet 6 of 10) to be cast into exterior face of outside beams.

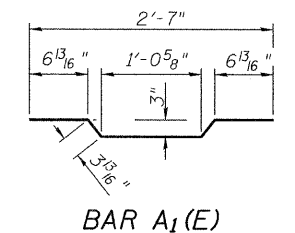


SECTION A-A

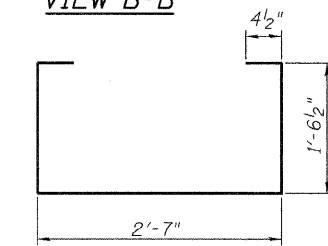
10-1/2" ϕ Strands Each Strand Stressed to 30,900 Lbs.
4-Strands 1 3/4" up, 4-Strands 3 3/4" up, 2-Strands 5 3/4" up
Note: Place the number of strands specified in each row symmetrically about the centerline of beam in the permissible strand locations shown.



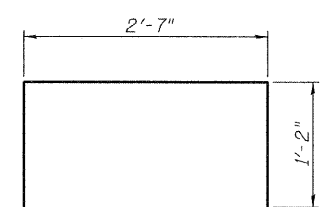
VIEW B-B



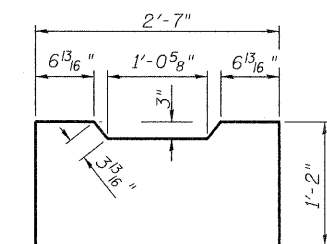
BAR A1(E)



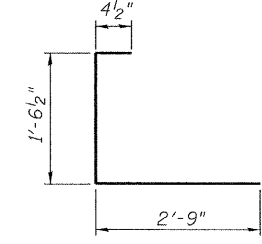
BAR S(E)



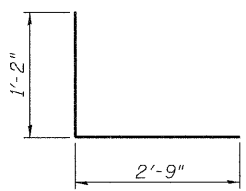
BAR S1(E)



BAR S2(E)



BAR S3(E)



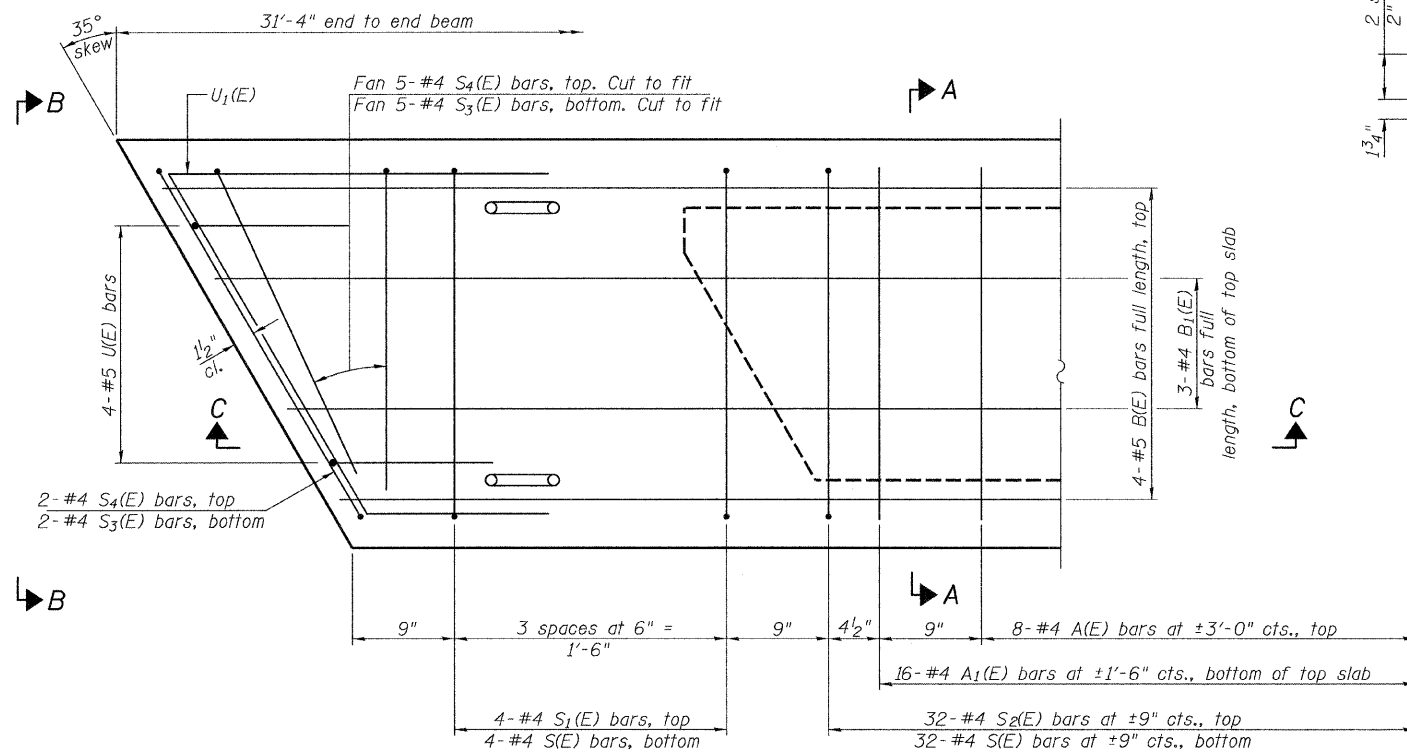
BAR S4(E)

BAR LIST - ONE BEAM ONLY
(For information only)

Bar	No.	Size	Length	Shape
A(E)	8	#4	2'-7"	—
A1(E)	16	#4	2'-10"	—
B(E)	4	#5	*31'-1"	—
B1(E)	3	#4	*31'-1"	—
S(E)	40	#4	6'-5"	—
S1(E)	8	#4	4'-11"	—
S2(E)	32	#4	5'-2"	—
S3(E)	14	#4	4'-8"	—
S4(E)	14	#4	3'-11"	—
U(E)	8	#5	4'-0"	—
U1(E)	4	#4	7'-4"	—

* Total Length, Lap as necessary

Note: See sheet 2 of 10 for additional details and Bill of Material.

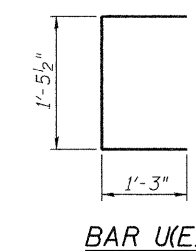


PLAN VIEW

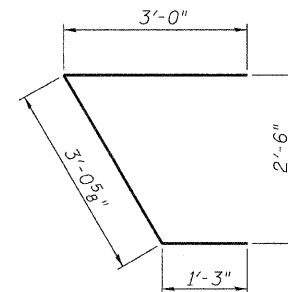
Note: Spacing of S(E) and S2(E) bars may be adjusted up to 4" in the immediate area of the transverse tie diaphragms to miss the block outs for the transverse ties.

MINIMUM BAR LAP

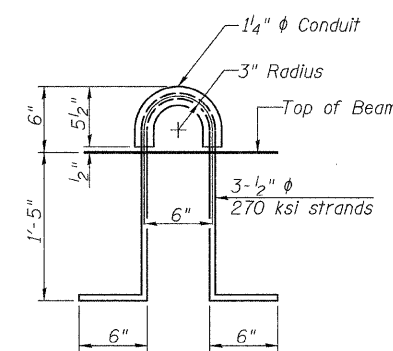
#4 bar = 2'-0"
#5 bar = 2'-6"



BAR U(E)



BAR U1(E)



LIFTING LOOP DETAIL

SUPERSTRUCTURE - SPANS 1 & 3
MASON COUNTY
SECTION 08-00035-01-BR
C.H. 19 OVER SLEEPY HOLLOW DITCH

SHEET NO. 3	ROUTE NO.	SECTION	COUNTY	TOTAL SHEETS	SHEET NO.
10 SHEETS	CH 19	08-00035-01-BR	MASON	22	9
		S.N. 063-3033	CONTRACT NO. 93549		
	FED. ROAD DIST. NO. 7	ILLINOIS	FED. AID PROJECT BRS-1595(104)		