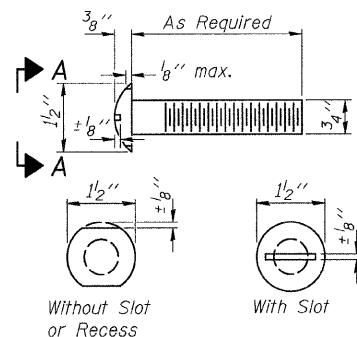
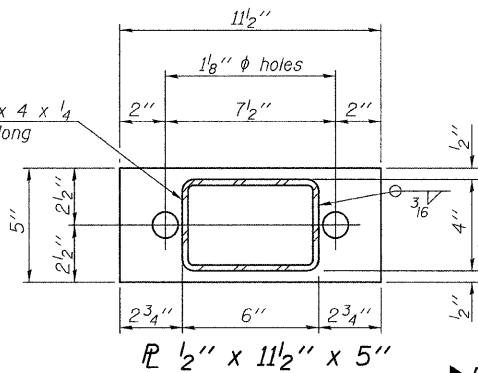


FOR RAIL POST SPACING SEE SH.#7 OF 10



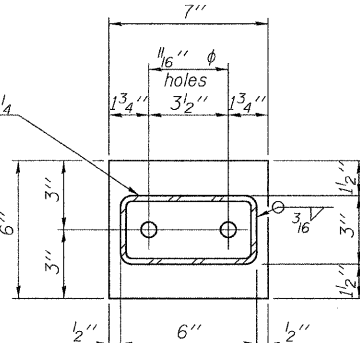
VIEW A-A
ROUND HEAD BOLT

HSS 6 x 4 x 1/4
x 3 1/2" long



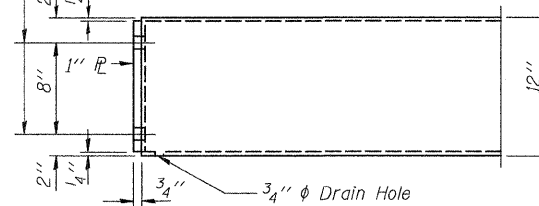
PL 1/2" x 11 1/2" x 5"

HSS 6 x 3 x 1/4
x 3 3/8" long

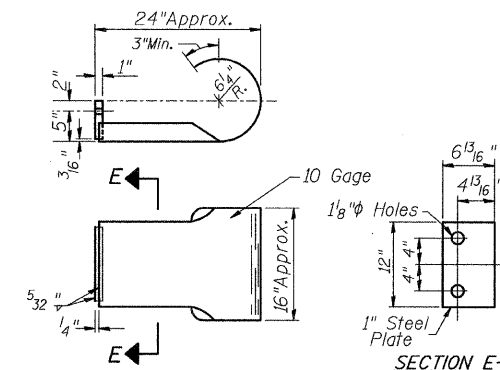


PL 1/2" x 7" x 6"

1/8" φ Holes for 1" φ x 4" Round Head Bolts.
Provide 2 flat washers & locknuts for Curled
End Section connection & connection shown
on Standard BLR 27.



END OF RAIL DETAILS

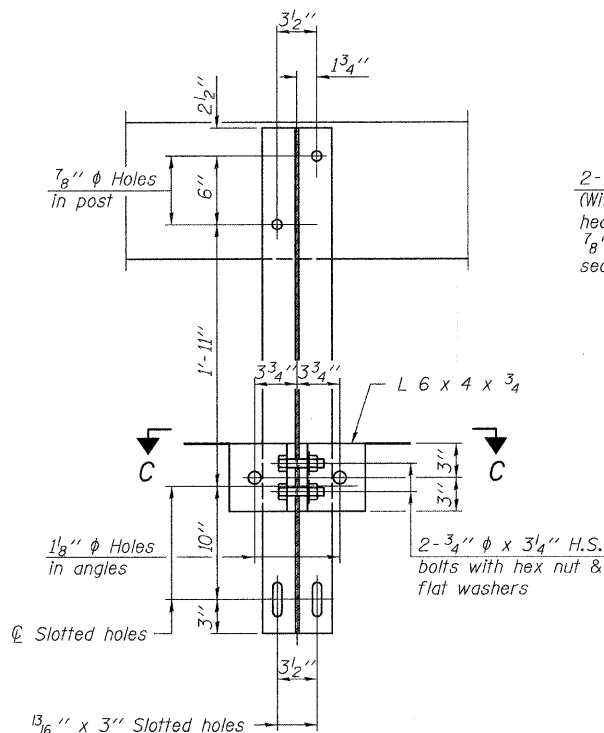


SECTION E-E
CURLED END SECTION
(2 Req'd) Cost Included with Steel Railing, Type S-1.
Terminal Markers - Direct Applied shall be placed on
end of each Curled End Section. (S.E. & N.W. Corners)

NOTES

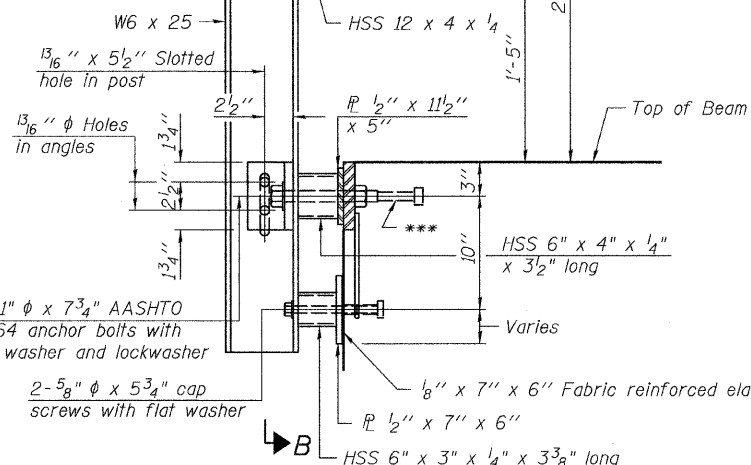
All field drilled holes shall be coated with an approved zinc rich paint before erection.
For multi-span bridges, sufficient 1/4" x 6" x 1'-2" galvanized steel shims shall be provided to align rail between adjacent spans. Cost included with Steel Railing, Type S-1.
All steel rail elements shall be galvanized according to Article 509.05 of the Standard Specifications.

*** The studs of the anchor devices shall be placed below the top reinforcement bars and the outermost longitudinal reinforcement bar shall be placed directly above the studs of the rail post anchor device.

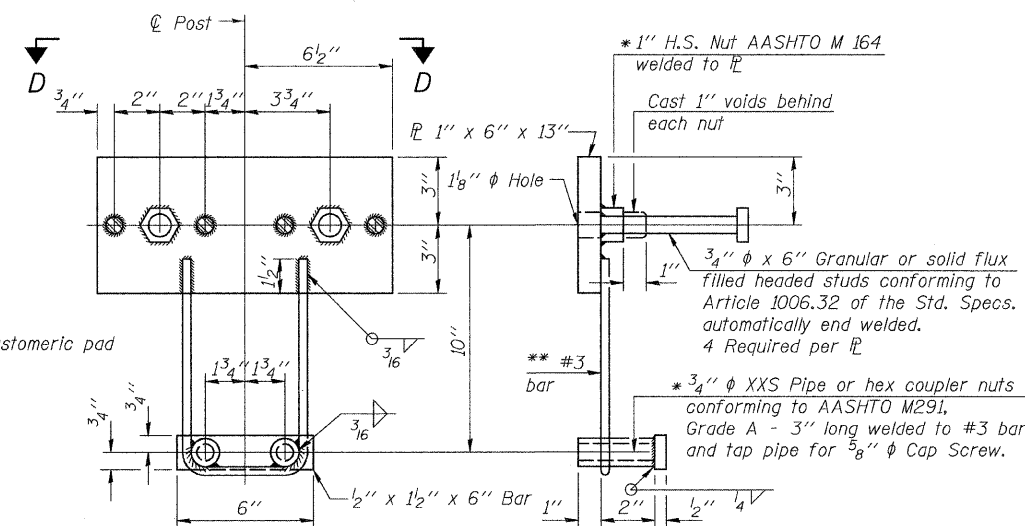


SECTION B-B

2-3/4" φ x 6" Round Head Bolts
(With slot or approved recess in head) with locknut & flat washer.
7/8" φ holes in hollow structural section may be drilled in the field.

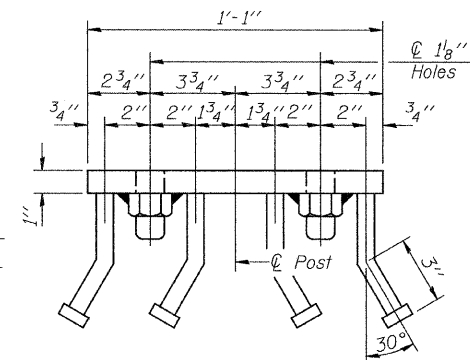


SECTION AT RAILING POST

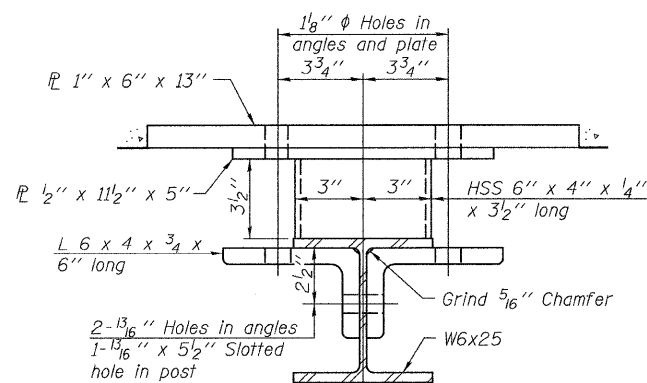


ANCHOR DEVICE

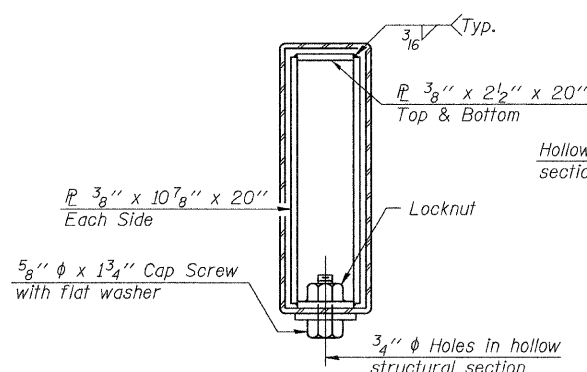
* Threaded areas shall be plugged or blocked off during casting of beam.



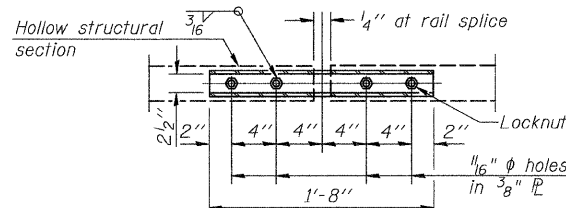
VIEW D-D



SECTION C-C



SECTIONS AT RAIL SPLICE



PLAN-BOTT. SPLICE PL
TYPICAL

** Whenever the lower insert assemblies interfere with strand locations, the #3 bars shall be cut and adjusted in order to allow raising or lowering of the lower inserts. Maximum adjustment not to exceed 1/2".

BILL OF MATERIAL

| Item | Unit | Quantity |
|-------------------------|------|----------|
| Steel Railing, Type S-1 | FOOT | 240 |

① See Special Provisions

STEEL RAIL, TYPE S-1
MASON COUNTY
SECTION 08-00035-01-BR
C.H. 19 OVER SLEEPY HOLLOW DITCH

| SHEET NO. 6 | ROUTE NO. | SECTION | COUNTY | TOTAL SHEETS | SHEET NO. |
|--------------------------------|---------------|----------------|--------------------------------|--------------|-----------|
| | CH 19 | 08-00035-01-BR | MASON | 22 | 12 |
| 10 SHEETS | S.N. 063-3033 | | CONTRACT NO. 93549 | | |
| FED. ROAD DIST. NO. 7 ILLINOIS | | | FED. AID PROJECT BRS-1595(104) | | |