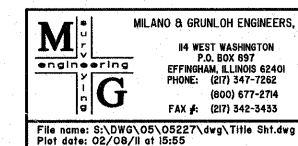


ROUTE NO.	SECTION	COUNTY	TOTAL SHEETS	SHEET NO.
FAU 8390	04-00084- 01-PV	EFFINGHAM	139	3
FED. ROAD DIST. NO. 7	ILLINOIS			

CONTRACT #95639

STANDARDS

000001-06	Standard Symbols, Abbreviations, and Patterns	630001-09	Steel Plate Beam Guardrail
280001-05	Temporary Erosion Control Systems	630301-05	Shoulder Widening for Type I (Special) Guardrail Terminals
420001-07	Pavement Joints	631032-06	Traffic Barrier Terminal, Type 6A
420101-04	(24') 7.2m Joint PCC Pavement	635006-03	Reflector and Terminal Marker Placement
424001-05	Curb Ramps for Sidewalk	635011-02	Reflector Marker and Mounting Details
515001-03	Name Plate for Bridges	701006-03	Off-Road Operations, 2L, 2W, 4.5m (15') to 600mm (24") from Pavement Edge
542301-03	Precast Reinforced Concrete Flared End Section	701011-02	Off-Road Moving Operations 2L, 2W, Day Only
542401-01	Aluminum End Section	701301-04	Lane Closure 2L, 2W Short Time Operations
542606-02	Reinforced Concrete Pipe Tee	701306-03	Lane Closure 2L, 2W Slow Moving Operations Day Only for Speeds \geq 45 MPH
602301-03	Inlet, Type A	701311-03	Lane Closure 2L, 2W, Moving Operations - Day Only
602306-03	Inlet, Type B	701336-06	Lane Closure 2L, 2W Work Areas in Series. for Speeds \geq 45 MPH
602401-03	Manhole, Type A	701801-04	Lane Closure, Multilane, 1W or 2W, Crosswalk or Sidewalk Closure
602601-02	Precast Reinforced Concrete Flat Slab Top	701901-01	Traffic Control Devices
602701-02	Manhole Steps	720001-01	Sign Panel Mounting Details
604001-03	Frame and Lid, Type I	720006-02	Sign Panel Erection Details
604006-04	Frame and Grate, Type 3	780001-02	Typical Pavement Markings
604011-04	Frame and Grate, Type 3V	BLR 2I-8	Typical Application of Traffic Control Devices for Construction on Rural Local Highways
604041-02	Frame and Grate, Type 9	701501-06	Urban Lane Closure, 2L, 2W, Undivided
606001-04	Concrete Curb Type B and Combination Concrete Curb and Gutter		Δ Revised 5-31-2011
606006-02	Outlet for Concrete Curb and Gutter, Type B-15.60 (B-6.24)		
606201-02	Type B Gutter (Inlet, Outlet and Entrance)		



STANDARDS SHEET
EVERGREEN AVENUE
CITY OF EFFINGHAM, ILLINOIS
COUNTY OF EFFINGHAM, ILLINOIS

File name: S:\DWG\05\08227\dwg\Title Sht.dwg
Plot date: 02/08/11 at 15:55