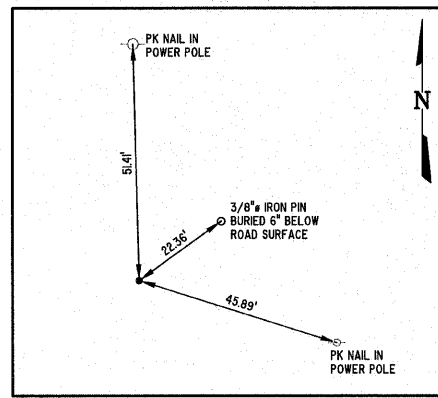
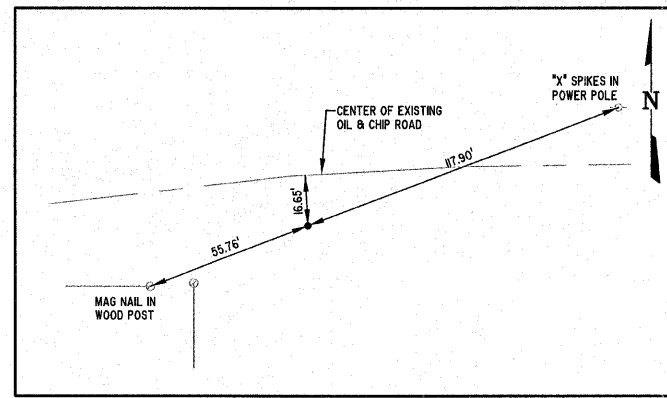


ROUTE NO.	SECTION	COUNTY	TOTAL SHEETS	SHEET NO.
FAU 8390	04-0084-01-PV	EFFINGHAM	139	19
FED. ROAD DIST. NO. 7		ILLINOIS		

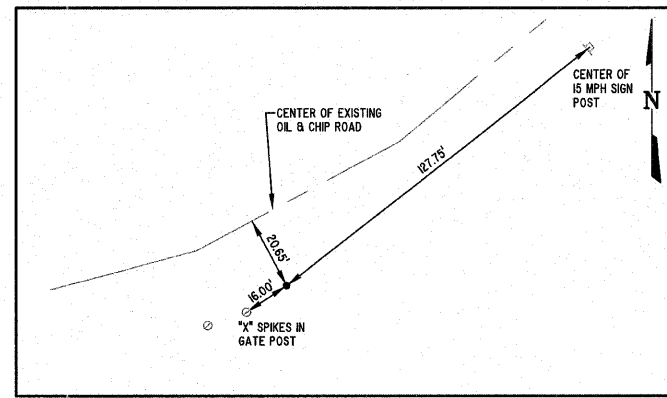
CONTRACT #95639



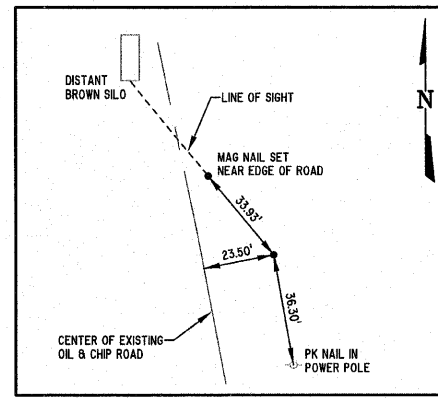
**TRAVERSE POINT #1**  
IRON PIN  
20.17' RT, STA. 27+44.53



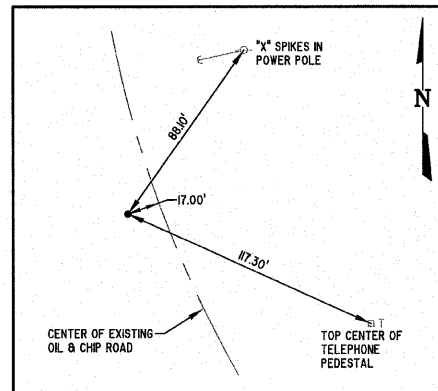
**TRAVERSE POINT #4**  
IRON PIN  
11.90' LT, STA. 4+32.61



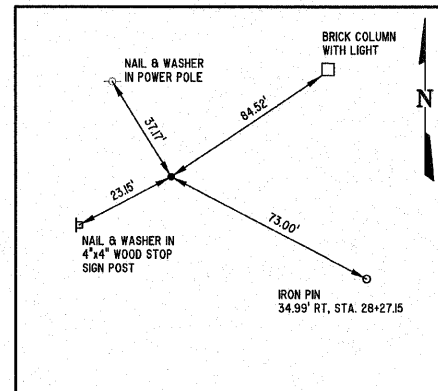
**TRAVERSE POINT #5**  
IRON PIN  
22.61' LT, STA. 54+64.79



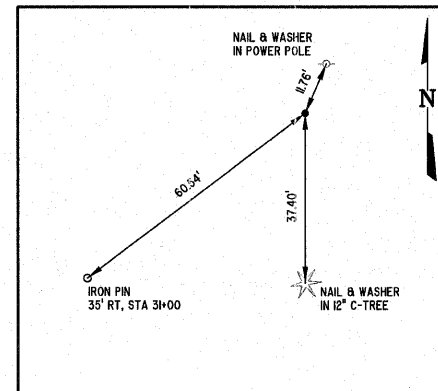
**TRAVERSE POINT #6**  
IRON PIN  
272.50' LT, STA. 73+76.69



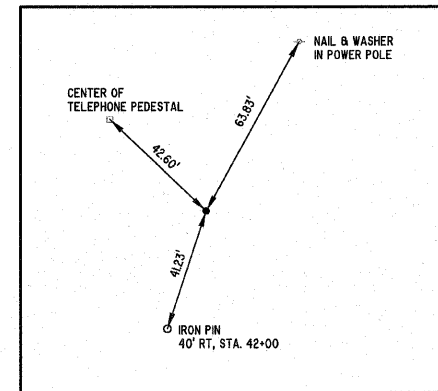
**TRAVERSE POINT #7**  
IRON PIN  
7.26' RT, STA. 8+11.97



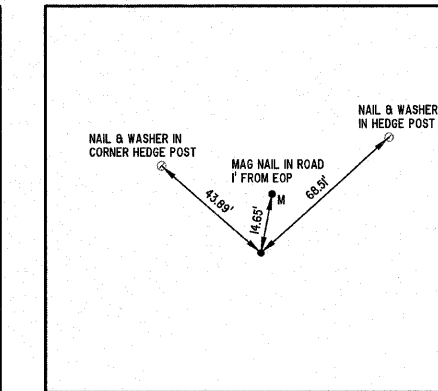
**P.O.T. STA. 27+63.05**  
1/2" IRON PIN  
(EVERGREEN AVENUE)



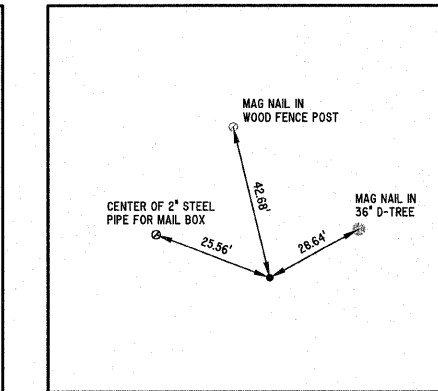
**P.I. STA. 31+48.22**  
1/2" IRON PIN  
(EVERGREEN AVENUE)



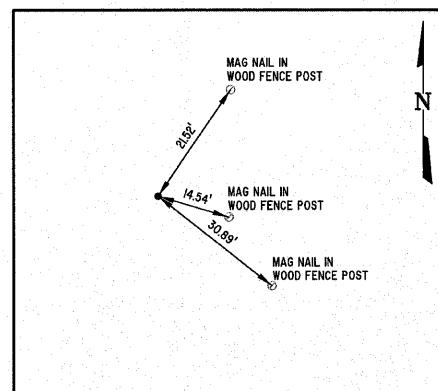
**P.I. STA. 42+12.41**  
1/2" IRON PIN  
(EVERGREEN AVENUE)



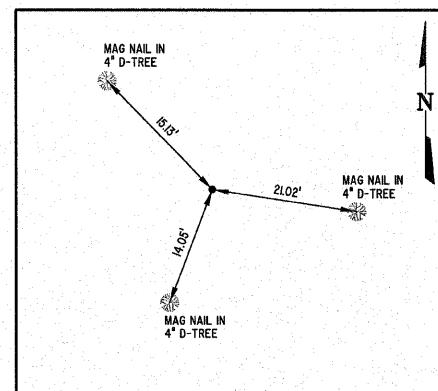
**P.O.T. STA. 51+50.00**  
1/2" IRON PIN  
(EVERGREEN AVENUE)



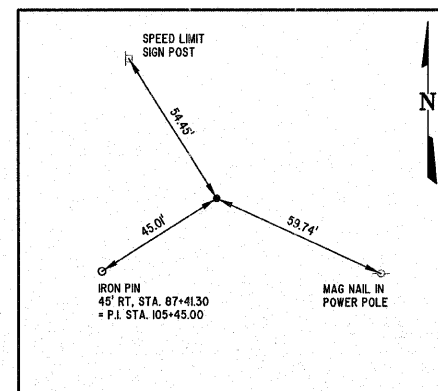
**P.O.T. STA. 54+00.00**  
1/2" IRON PIN  
(EVERGREEN AVENUE)



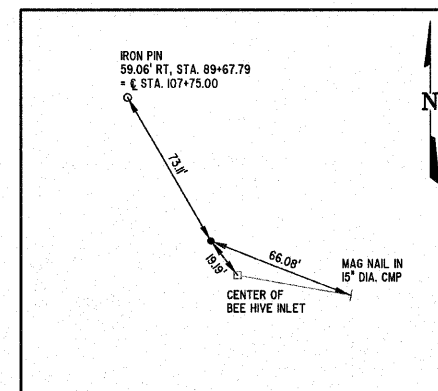
**P.T. STA. 63+55.97**  
1/2" IRON PIN  
(EVERGREEN AVENUE)



**P.O.T. STA. 70+00.00**  
1/2" IRON PIN  
(EVERGREEN AVENUE)



**P.O.C. STA. 87+41.30**  
1/2" IRON PIN  
(EVERGREEN AVENUE)



**P.I. STA. 90+57.60**  
1/2" IRON PIN  
(EVERGREEN AVENUE)

**MILANO & GRUNLOH ENGINEERS, LLC**  
 84 WEST WASHINGTON  
 P.O. BOX 897  
 EFFINGHAM, ILLINOIS 62401  
 Phone: (217) 347-7282  
 (800) 677-2714  
 Fax: (217) 342-3433  
 Web Address: www.mgengineers.com  
 Design Firm #: 04-00300

REFERENCE TIES  
 CENTERLINE - EVERGREEN AVENUE  
 AND TRAVERSE POINTS  
 COUNTY OF EFFINGHAM, ILLINOIS

File name: S:\DWG\05\05227.dwg\Alignment Ties.dwg  
 Plot date: 02/08/11 at 16:10 F.B. 589,590