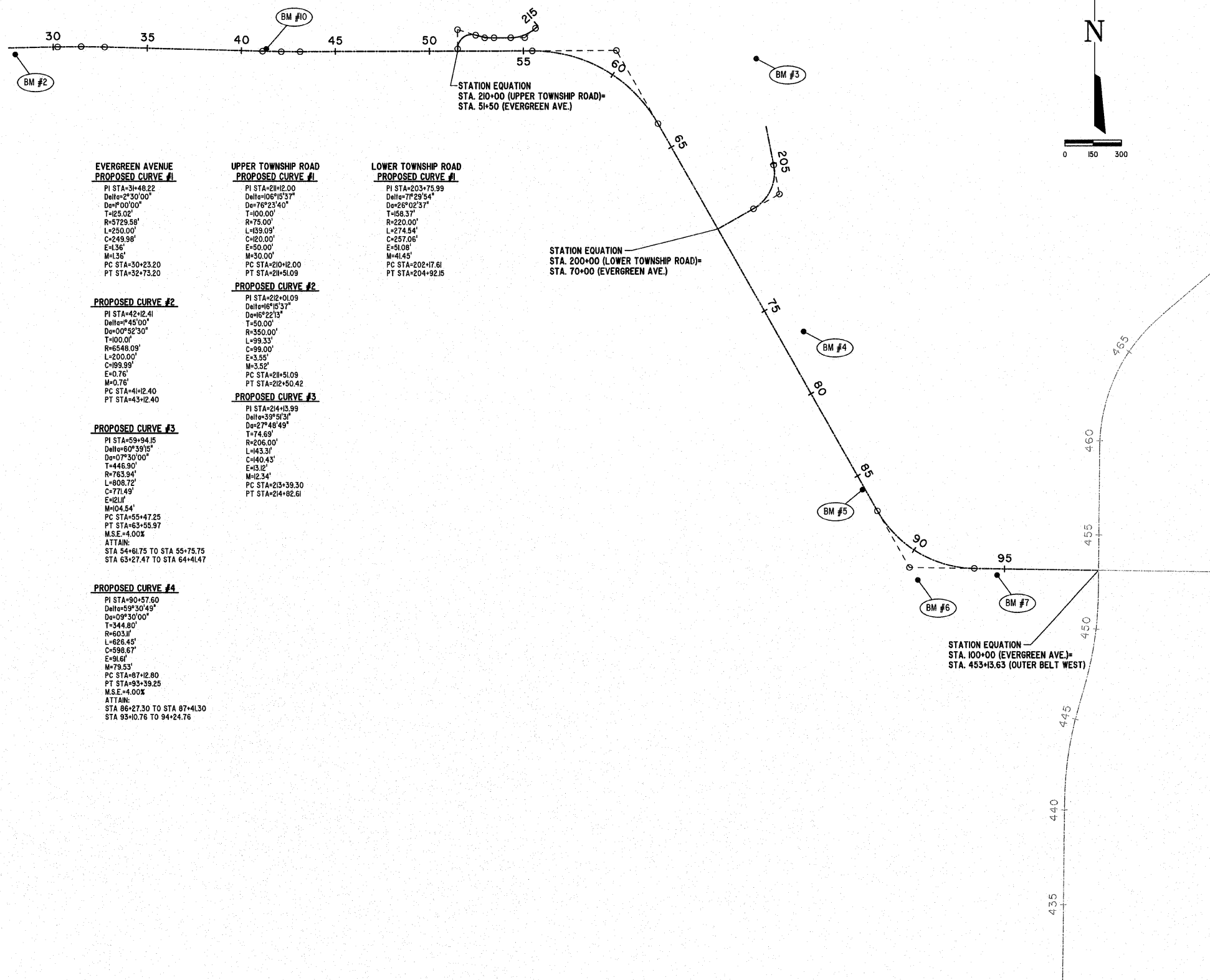


ROUTE NO.	SECTION	COUNTY	TOTAL SHEETS	SHEET NO.
FAU 8390	04-00084-01-PV	EFFINGHAM	139	21
FED. ROAD DIST. NO. 7		ILLINOIS		

CONTRACT #95639



**EVERGREEN AVENUE
PROPOSED CURVE #1**
 PI STA=31+48.22
 Delta=2°30'00"
 De=0°00'00"
 T=125.02'
 R=5729.58'
 L=250.00'
 C=249.98'
 E=1.36'
 M=1.36'
 PC STA=30+23.20
 PT STA=32+73.20

**UPPER TOWNSHIP ROAD
PROPOSED CURVE #1**
 PI STA=211+2.00
 Delta=106°15'37"
 De=76°23'40"
 T=100.00'
 R=75.00'
 L=139.09'
 C=20.00'
 E=50.00'
 M=30.00'
 PC STA=210+12.00
 PT STA=211+51.09

**LOWER TOWNSHIP ROAD
PROPOSED CURVE #1**
 PI STA=203+75.99
 Delta=77°29'54"
 De=26°02'37"
 T=158.37'
 R=220.00'
 L=274.54'
 C=257.06'
 E=51.06'
 M=41.45'
 PC STA=202+17.61
 PT STA=204+92.15

PROPOSED CURVE #2
 PI STA=42+12.41
 Delta=45°00'
 De=0°52'30"
 T=100.00'
 R=6548.09'
 L=200.00'
 C=199.99'
 E=0.76'
 M=0.76'
 PC STA=41+12.40
 PT STA=43+12.40

PROPOSED CURVE #2
 PI STA=212+01.09
 Delta=16°15'37"
 De=16°22'13"
 T=50.00'
 R=350.00'
 L=99.33'
 C=99.00'
 E=3.55'
 M=3.52'
 PC STA=211+51.09
 PT STA=212+50.42

PROPOSED CURVE #3
 PI STA=214+13.99
 Delta=33°51'31"
 De=27°48'49"
 T=74.69'
 R=206.00'
 L=143.31'
 C=140.43'
 E=15.12'
 M=12.34'
 PC STA=213+39.30
 PT STA=214+82.61

PROPOSED CURVE #3
 PI STA=59+94.15
 Delta=60°39'15"
 De=0°30'00"
 T=445.90'
 R=763.94'
 L=808.72'
 C=771.49'
 E=21.17'
 M=94.54'
 PC STA=55+47.25
 PT STA=63+55.97
 M.S.E.=4.00X
 ATTAIN:
 STA 54+81.75 TO STA 55+75.75
 STA 63+27.47 TO STA 64+41.47

PROPOSED CURVE #4
 PI STA=90+57.60
 Delta=59°30'49"
 De=0°30'00"
 T=344.80'
 R=603.11'
 L=828.45'
 C=598.67'
 E=91.61'
 M=79.53'
 PC STA=87+12.80
 PT STA=93+39.25
 M.S.E.=4.00X
 ATTAIN:
 STA 86+27.30 TO STA 87+41.30
 STA 93+10.76 TO STA 94+24.76

BM #2
 TOP CAP BOLT ON FIRE HYDRANT
 AT POINT OF "OPEN" ARROW
 SE QUADRANT OF CADILLAC DR.
 AND NAZARENE RD.
 35.48'Rt, STA. 27+97.56
 ELEVATION=599.63

BM #3
 TOP OF RAILROAD SPIKE IN POWER POLE
 SOUTH OF EXISTING FIELD ENTRANCE
 625.87'Lt, STA. 63+33.18
 ELEVATION=531.04

BM #4
 CHISELED SQUARE IN CENTER OF
 CONCRETE HEADWALL
 128.02'Lt, STA. 76+96.19
 ELEVATION=528.88

BM #5
 CHISELED SQUARE IN SW CORNER
 OF BRIDGE ABUTMENT
 12.74'Rt, Sta. 85+76.23
 ELEVATION=536.42

BM #6
 TOP OF RAILROAD SPIKE IN METER POLE
 EAST OF LSAWC PUMP STATION
 130.12'Lt, STA. 90+85.71
 ELEVATION=577.94

BM #7
 TOP CAP BOLT ON FIRE HYDRANT
 AT POINT OF "OPEN" ARROW
 31.5' WEST OF CALICO ROAD
 34.18'Rt, STA. 94+61.48
 ELEVATION=585.38

BM #10
 TOP OF IRON PIN (CONTROL POINT #4)
 11.90'Lt, STA. 41+32.61
 ELEVATION=595.69

EVERGREEN AVENUE			
Station	Northing	Easting	Description
Sta. 27+63.05	90176.5416	910034.6095	P.O.T.
Sta. 30+23.20	901721.0483	910294.7181	P.C.
Sta. 31+48.22	901723.2142	910419.7193	P.I.
Sta. 32+73.20	901719.9254	910544.6959	P.T.
Sta. 41+12.40	901697.8497	91383.6077	P.C.
Sta. 42+12.41	901695.2190	91483.5810	P.I.
Sta. 43+12.40	901695.6424	91583.5878	P.T.
Sta. 55+47.25	901700.8716	91288.4284	P.C.
Sta. 59+94.15	901702.7640	913265.3216	P.I.
Sta. 63+55.97	901314.1449	913485.9848	P.T.
Sta. 87+12.80	899264.6670	914649.7053	P.C.
Sta. 90+57.60	898964.8284	914819.9577	P.I.
Sta. 93+39.25	898959.4251	915164.7182	P.T.
Sta. 100+00.00	898949.0708	915823.3823	P.O.T.

UPPER TOWNSHIP ROAD			
Station	Northing	Easting	Description
Sta. 210+00.00	901699.1894	912421.1796	P.O.T.
Sta. 210+12.00	901711.8933	912421.1287	P.C.
Sta. 211+2.00	901811.8884	912420.7053	P.I.
Sta. 211+51.09	901783.5951	912516.8230	P.T./P.C.
Sta. 212+01.09	901769.7986	912564.8819	P.I.
Sta. 212+50.42	901770.0103	912614.8814	P.T.
Sta. 213+39.30	901770.3866	912703.7578	P.C.
Sta. 214+13.99	901770.7029	912778.4475	P.I.
Sta. 214+82.61	901818.8140	912835.5785	P.T.
Sta. 215+00.00	901830.0179	912848.8830	P.O.T.

LOWER TOWNSHIP ROAD			
Station	Northing	Easting	Description
Sta. 200+00.00	900754.1042	913803.9833	P.O.T.
Sta. 202+17.61	900861.5544	913993.2185	P.C.
Sta. 203+75.99	900939.7536	914130.9385	P.I.
Sta. 204+92.15	901095.1705	914100.4838	P.T.
Sta. 206+60.00	901259.8905	914068.2063	P.O.T.

MILANO & GRUNLOH ENGINEERS, LLC
 14 WEST WASHINGTON
 P.O. BOX 897
 EFFINGHAM, ILLINOIS 62401
 Phone: (217) 347-7282
 (800) 677-2714
 Fax #: (217) 342-3433
 Web Address: www.mgengineers.com
 Design Firm #: 184-00309

ALIGNMENT AND BENCHMARKS
 EVERGREEN AVENUE
 COUNTY OF EFFINGHAM, ILLINOIS
 COUNTY OF EFFINGHAM, ILLINOIS

File name: S:\DWG\05\05227.dwg, Alignment Title.dwg
 Plot date: 02/06/11 at 16:10 F.S. 589,590