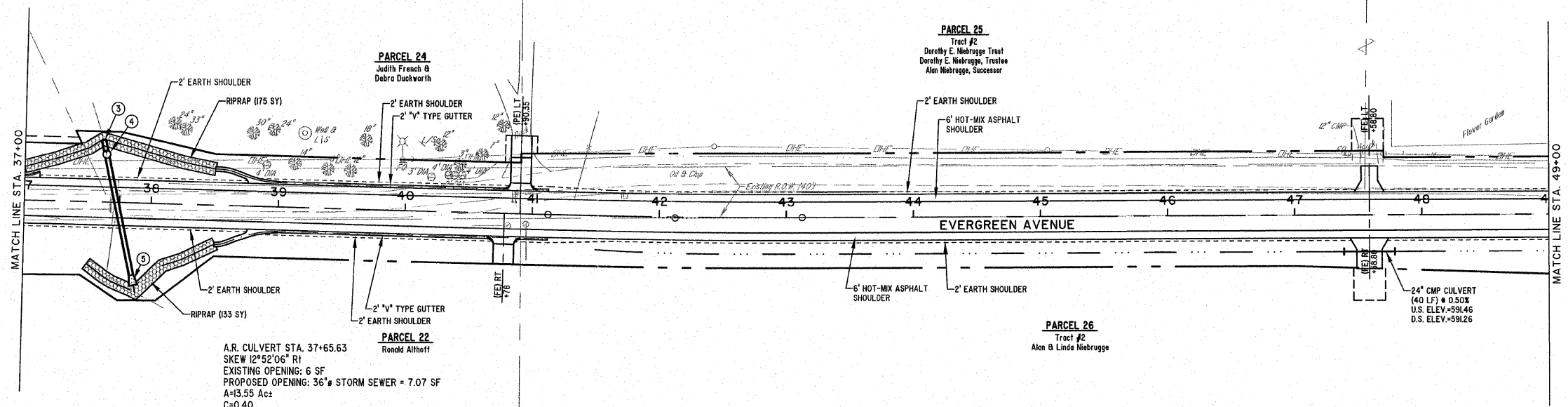


ROUTE NO.	SECTION	COUNTY	TOTAL SHEETS	SHEET NO.
FAU 8390	04-00084-01-PV	EFFINGHAM	139	25
FED. ROAD DIST. NO. 7		ILLINOIS	FED. AID PROJECT-	
CONTRACT #95639				



A.R. CULVERT STA. 37+65.63
 SKEW 12°52'06" RT
 EXISTING OPENING: 6 SF
 PROPOSED OPENING: 36" STORM SEWER = 7.07 SF
 A=3.55 Ac±
 C=0.40
 I=7.6 in/hr
 Q=40.92
 INLET CONTROL
 SLOPE=0.14 11\11
 V=7.71 fps
 V=7.99 fps
 USFL=573.24
 DSFL=565.85

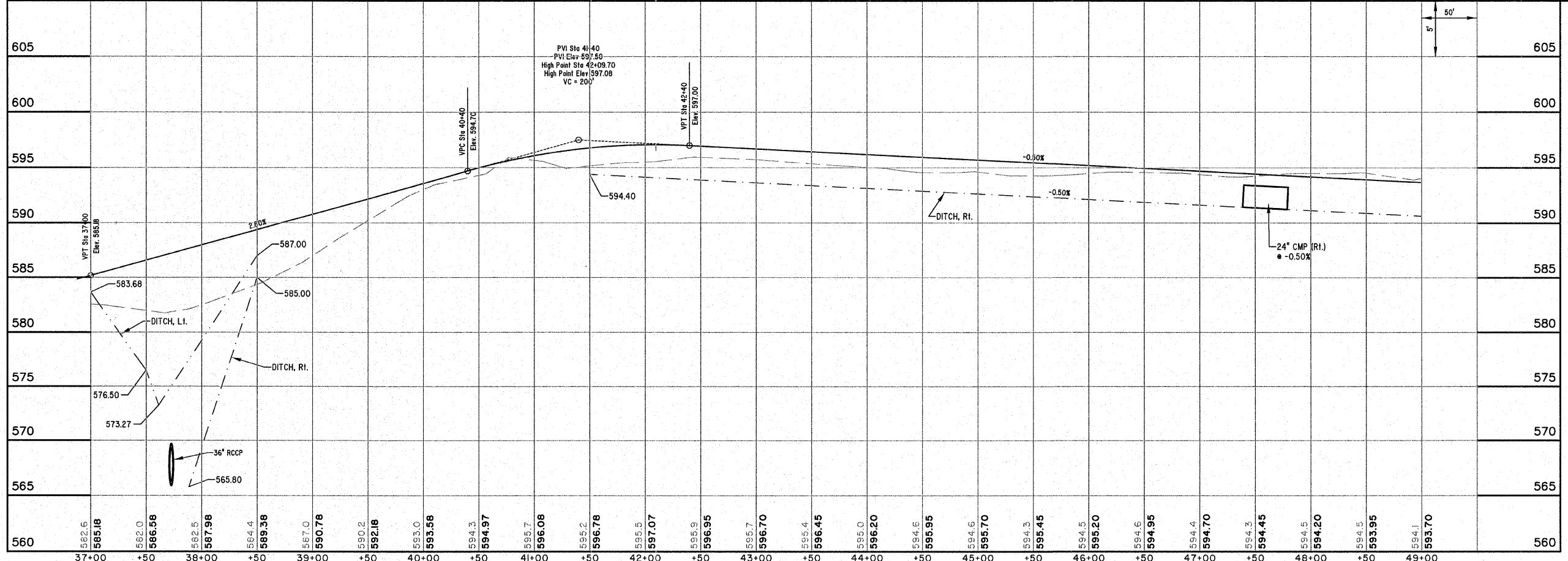
CURVE #6
 PI STA=42+12.41
 I=45°00' L
 Da=0°52'30"
 T=100.01'
 R=6548.09'
 L=200.00'
 C=199.99'
 E=0.76'
 M=0.76'
 PC STA=41+12.40
 PT STA=43+12.40



SCALES:
 1" = 30' HOR
 1" = 5' VER

MILANO & GRUNLOH ENGINEERS, LLC
 14 WEST WASHINGTON
 P.O. BOX 897
 EFFINGHAM, ILLINOIS 62401
 Phone: (217) 347-7252
 (800) 677-2714
 Fax #: (217) 342-3433
 Web Address: www.mge-engineers.com
 Design Firm #: 184-00308

File name: S:\DWG\05\05227\dwg\Street Plan.dwg
 Plot date: 02/08/11 at 16:15 F.B. 568,590



EVERGREEN AVENUE