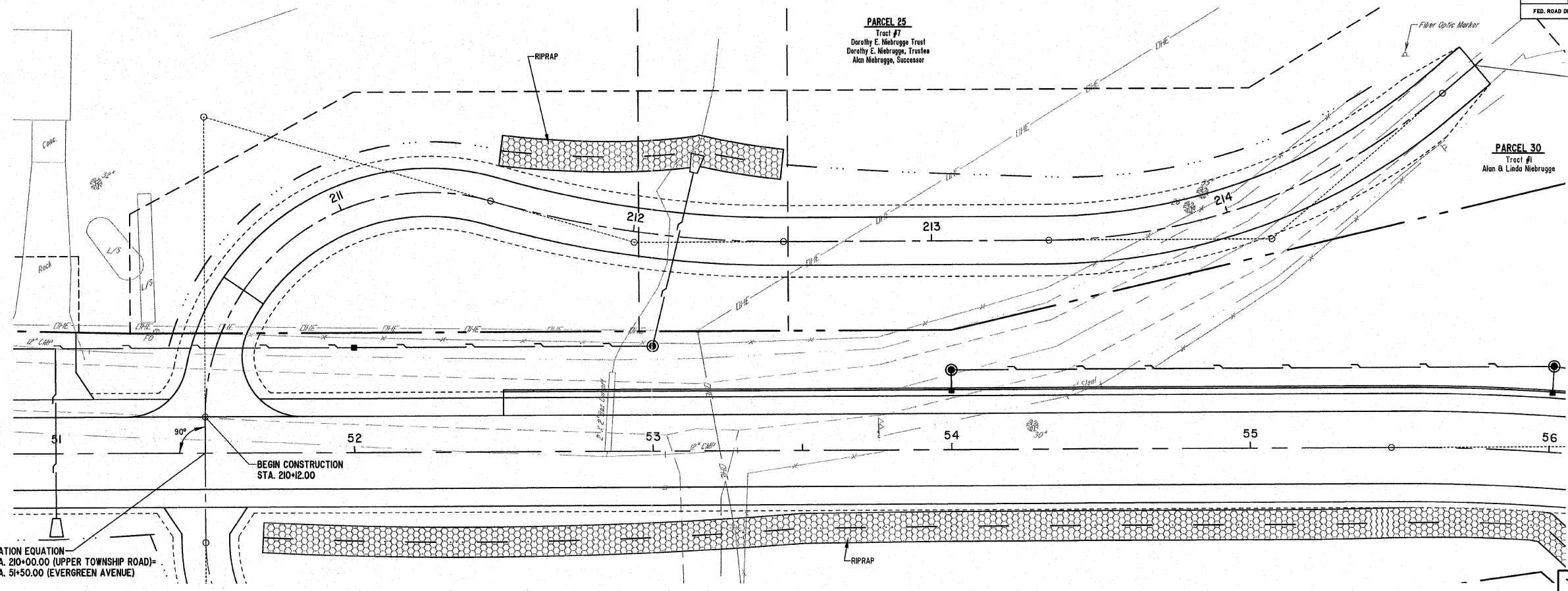


ROUTE NO.	SECTION	COUNTY	TOTAL SHEETS	SHEET NO.
FAU 8390	04-00084-01-PV	EFFINGHAM	139	33
FED. ROAD DIST. NO. 7		ILLINOIS	FED. AID PROJECT-	

CONTRACT #95639

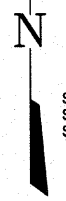
END CONSTRUCTION STA. 214+96.87



CURVE #1
 PI STA=210+12.00
 Delta=106°15'37"
 D=76°23'40"
 T=100.00'
 R=75.00'
 L=139.09'
 C=103.00'
 E=50.00'
 M=30.00'
 PC STA=210+12.00
 PT STA=211+51.09

CURVE #2
 PI STA=212+01.09
 Delta=16°15'37"
 D=16°22'13"
 T=50.00'
 R=50.00'
 L=99.33'
 C=99.00'
 E=3.55'
 M=3.52'
 PC STA=211+51.09
 PT STA=212+50.42

CURVE #3
 PI STA=214+13.99
 Delta=33°57'31"
 D=27°48'49"
 T=74.69'
 R=206.00'
 L=143.31'
 C=140.43'
 E=13.12'
 M=12.34'
 PC STA=213+39.30
 PT STA=214+82.61

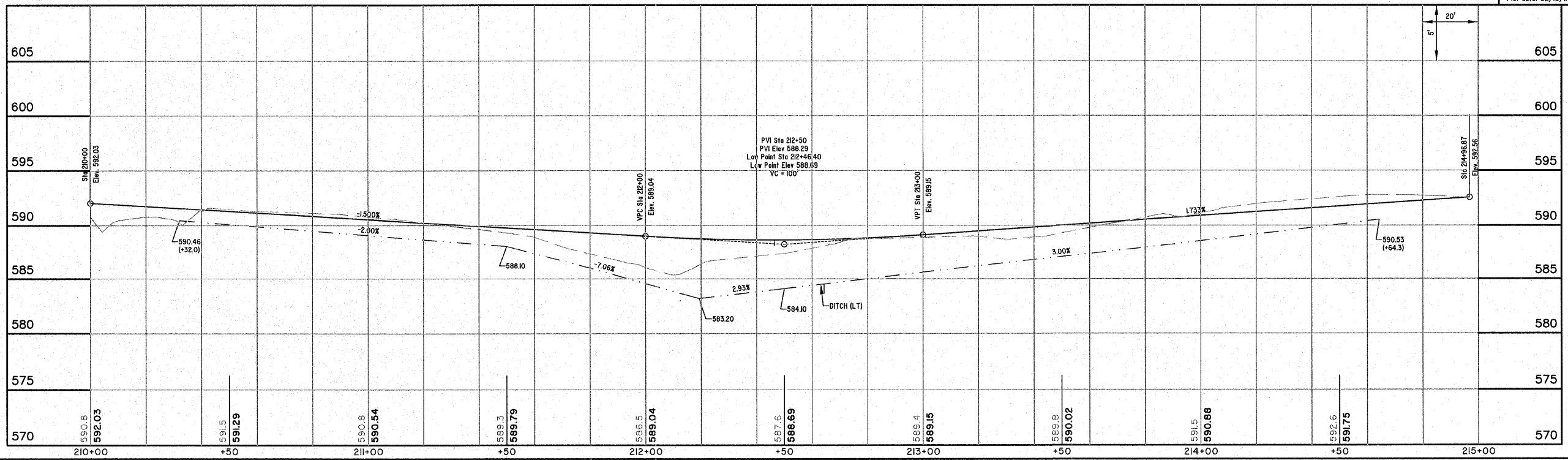


STATION EQUATION
 STA. 210+00.00 (UPPER TOWNSHIP ROAD)=
 STA. 51+50.00 (EVERGREEN AVENUE)

SCALES:
 1" = 20' HOR
 1" = 5' VER

MILANO & GRINLOH ENGINEERS, LLC
 14 WEST WASHINGTON
 P.O. BOX 897
 EFFINGHAM, ILLINOIS 62401
 Phone: (217) 547-7282
 (800) 677-2714
 Fax #: (217) 548-3433
 Web Address: www.mgengineers.com
 Design Firm # 184-03308

File name: S:\DWG\05\05227\dwg\Street Plan 20.dwg
 Plot date: 02/10/11 at 07:40
 F.B. 589,590



UPPER TOWNSHIP
 ROAD CONNECTION