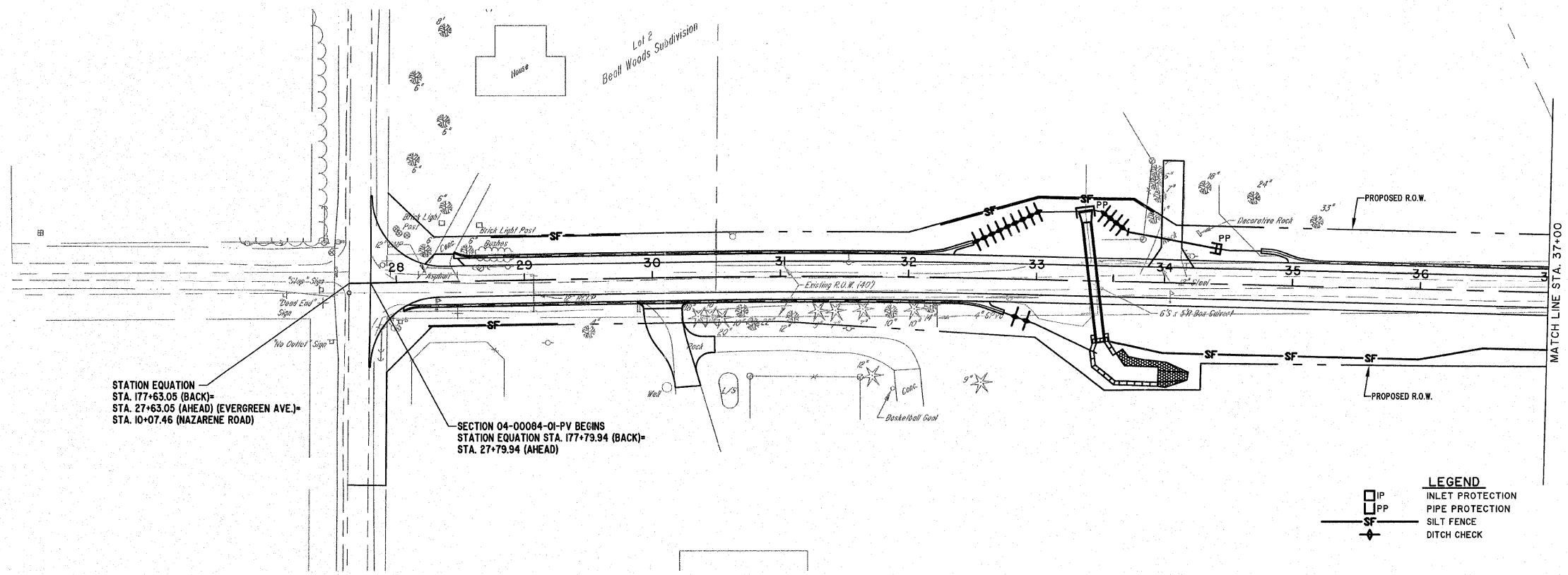


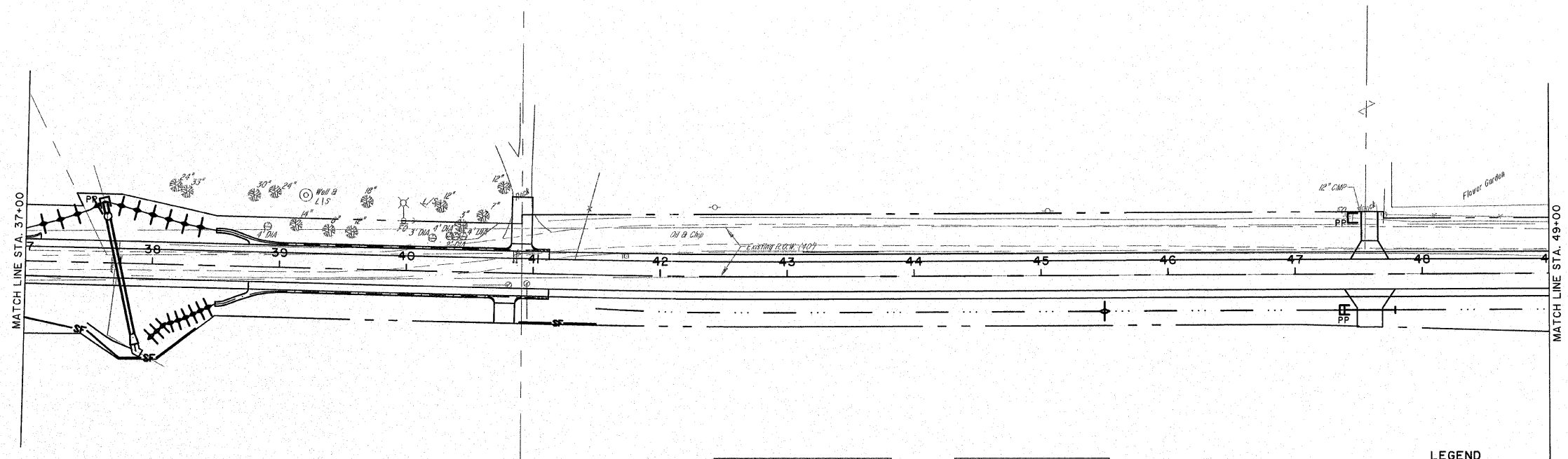
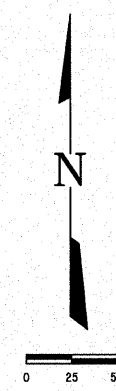
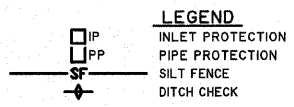
ROUTE NO.	SECTION	COUNTY	TOTAL SHEETS	SHEET NO.
FAU 8390	04-00084-01-PV	EFFINGHAM	139	46
FED. ROAD DIST. NO. 7		ILLINOIS		

CONTRACT #95639



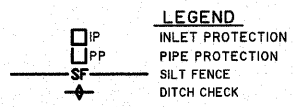
STATION EQUATION
 STA. 177+63.05 (BACK)=
 STA. 27+63.05 (AHEAD) (EVERGREEN AVE.)=
 STA. 10+07.46 (NAZARENE ROAD)

SECTION 04-00084-01-PV BEGINS
 STATION EQUATION STA. 177+79.94 (BACK)=
 STA. 27+79.94 (AHEAD)



PERIMETER EROSION BARRIER	
	FOOT
RT 28+25 TO 29+25	100
LT 28+75 TO 29+75	100
LT 32+25 TO 33+00	172
RT 33+57 TO 38+35	500
RT 40+80 TO 41+50	80
RT 58+50 TO 59+50	185
LT 86+05 TO 88+00	175
LT 98+10 TO 98+65	180
LT 98+88 TO 99+40	185
TOTAL	1657

TEMPORARY DITCH CHECKS	
	FOOT
SHEET 46	980
SHEET 47	896
SHEET 48	338



MILANO & GRUNLOH ENGINEERS, LLC
 14 WEST WASHINGTON
 P.O. BOX 897
 EFFINGHAM, ILLINOIS 62401
 Phone: (217) 347-7262
 (800) 677-2714
 Fax #: (217) 342-3433
 Web Address: www.mgeengineers.com
 Design Firm #: 184-003068

EROSION CONTROL PLAN
 EVERGREEN AVENUE
 STA. 27+00 TO STA. 49+00
 COUNTY OF EFFINGHAM, ILLINOIS

File name: S:\DWG\05_08227.dwg\Erosion Ctrl.dwg
 Plot date: 02/09/11 at 07:50
 F.B. 565,590