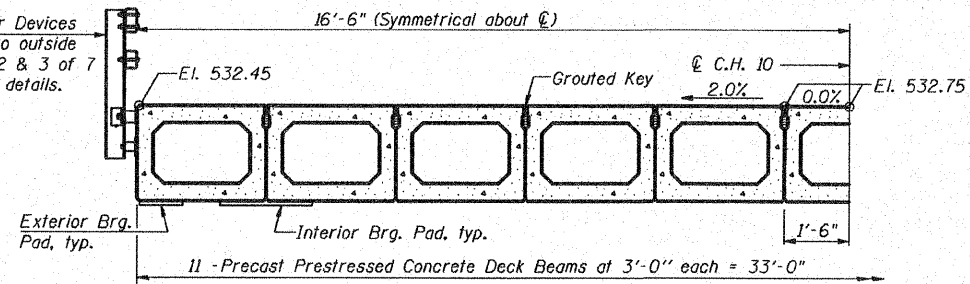
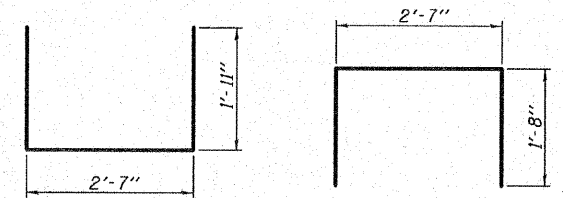


SECTION A-A

TYPICAL TRANSVERSE TIE ASSEMBLY

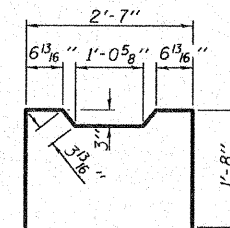


HALF CROSS SECTION



BAR S1(E)

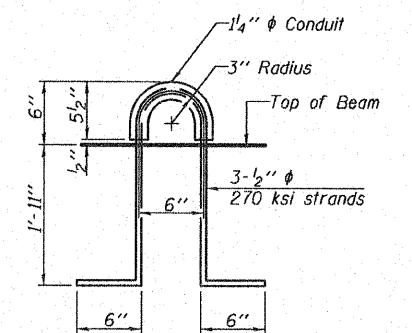
BAR S2(E)



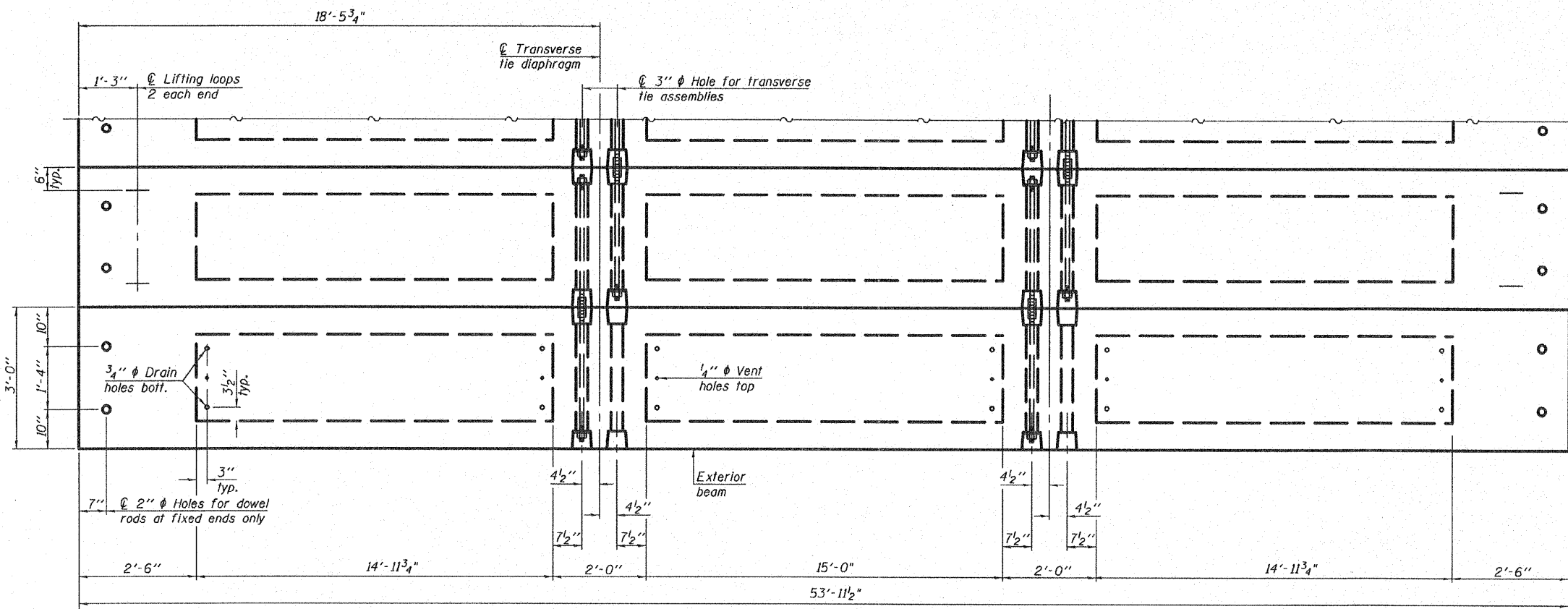
BAR U1(E)

BAR U2(E)

BAR U3(E)



LIFTING LOOP DETAIL



PLAN VIEW

BILL OF MATERIAL

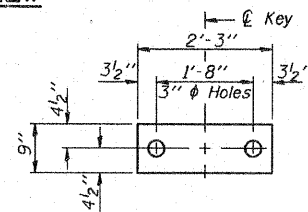
Precast Prestressed Conc. Deck Bms. (27" depth)	Sq. Ft.	3,562
---	---------	-------

Note: Connect beams in pairs with the transverse tie configuration shown.

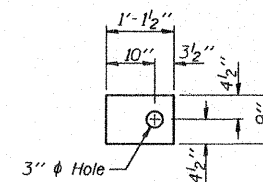
NOTES

- Prestressing steel shall be uncoated high strength, low relaxation 7-wire strand, Grade 270. The nominal diameter shall be 1/2" and the nominal cross-sectional area shall be 0.153 sq. in. The 1" rods in the transverse tie assembly shall be tightened to a snug fit and the threads set. Pockets on exterior faces of bridge shall be filled with grout after transverse tie assembly is in place.
- Reinforcement bars shall conform to ASTM A 706, Grade 60. (See Special Provisions).
- Two 1/8" fabric adjusting shims of the dimensions of the exterior bearing pad shall be provided for each bearing pad location.
- A minimum 2 1/2" lifting pin shall be used to engage the lifting loops during handling.
- Corrosion Inhibitor, per Article 1020.05(b)(12) and 1021.06 of the Standard Specifications, shall be used in the concrete for precast prestressed concrete deck beams.
- Compressive strength of prestressed concrete, f'c, shall be 6000 psi.
- Compressive strength of prestressed concrete at release, f'ci, shall be 5000 psi.

DESIGNED	SCD
CHECKED	DRB
DRAWN	THW
CHECKED	DRB



FABRIC BEARING PAD (Interior)



FABRIC BEARING PAD (Exterior)

FIXED

Notes: All bearing pads shall be 1" thick. Omit holes when using expansion bearings.

27" X 36" PPC DECK BEAM DETAILS
STRUCTURE NO. 025-3223

SHEET NO. 4 of 7 SHEETS	RTE.	SECTION	COUNTY	TOTAL SHEETS	SHEET NO.
	CH 10	04-00084-01-PV	EFFINGHAM	139	59
FED. ROAD DIST. NO.			ILLINOIS FED. AID PROJECT		
CONTRACT NO. 95639					