

STATE OF ILLINOIS
DEPARTMENT OF TRANSPORTATION
DIVISION OF HIGHWAYS

SECTION	COUNTY	TOTAL SHEETS	SHEET NO.
10-00091-00-BT	EFFINGHAM	9	1
CONTRACT NO. 95646			

Joint Utility Locating Information for Excavators
JULIE 1-800-892-0123

PLANS FOR PROPOSED
TRANSPORTATION, COMMUNITY, AND SYSTEM PRESERVATION PROJECT
PEDESTRIAN TRUSS BRIDGE

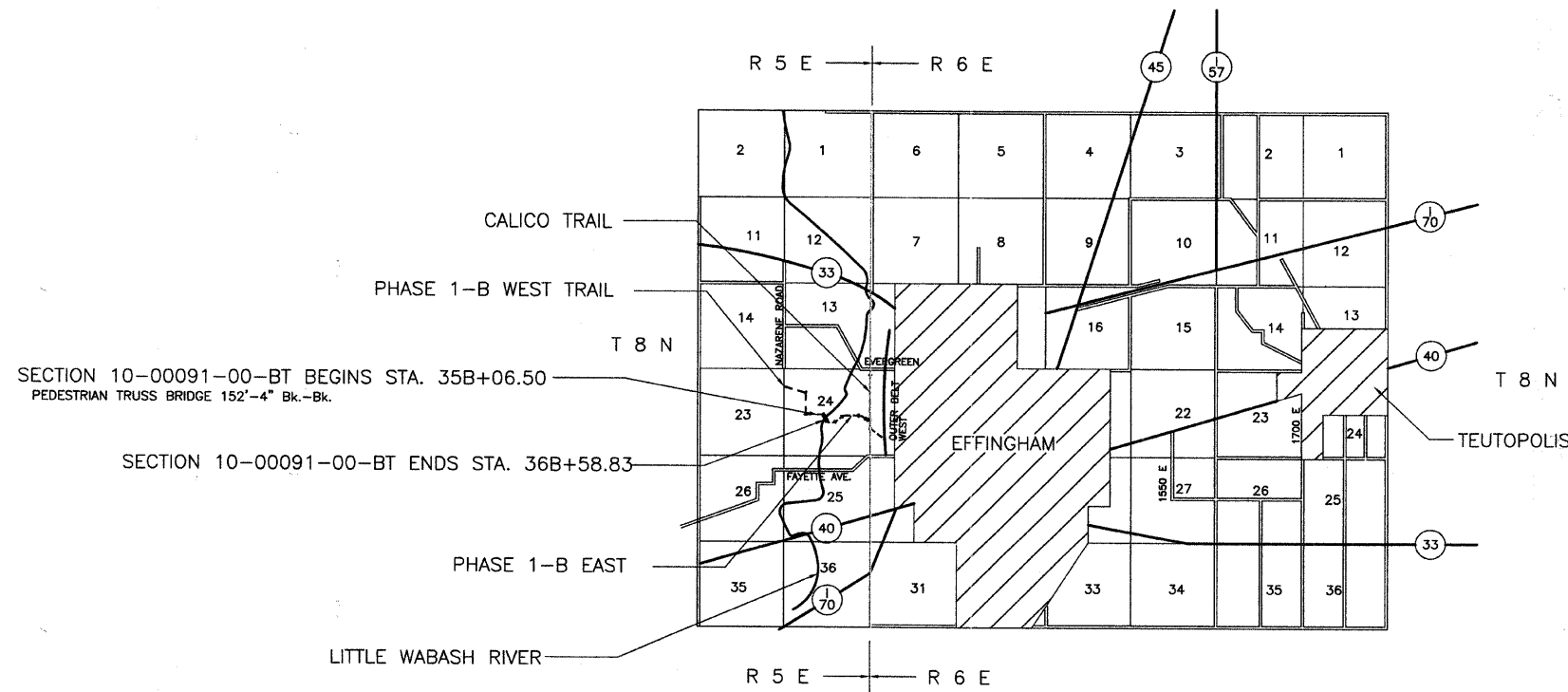
SECTION 10-00091-00-BT
PROJECT TCSP-IL09(029)
JOB NO. C-97-033-11
EFFINGHAM COUNTY

INDEX OF SHEETS

SHEET	ITEM
1	COVER SHEET
2	SUMMARY OF QUANTITIES
3	OVERALL PLAN AND PROFILE
4	GENERAL PLAN AND ELEVATION
5	BRIDGE DETAILS
6	ABUTMENT AND WINGWALL PLAN - DIMENSIONS
7	ABUTMENT AND WINGWALL PLAN - REINFORCEMENT
8	ABUTMENT AND WINGWALL SECTIONS AND DETAILS
9	CROSS SECTIONS

STANDARD DRAWINGS
STANDARD 000001-06
STANDARD 280001-05
STANDARD 515001-03
STANDARD 701901-01

PLAN	0 50' 100'
PROFILE HOR.	0 50' 100'
PROFILE VERT.	0 10' 20'
CROSS SECTIONS	
HOR.	0 5' 10'
VERT.	0 5' 10'



NET LENGTH SECTION 10-00091-00-BT = 152.33 Ft. = 0.029 Mi.

Roger A. Charleston
JUL 14/11
We Express Hope
29186 REGISTERED PROFESSIONAL ENGINEER OF ILLINOIS
CHARLESTON ENGINEERING INC.
105 N. KITCHELL
P.O. BOX 397
OLNEY, ILLINOIS 62450
PH. 618-392-0736

APPROVED 4/11 2011
COUNTY ENGINEER

PASSED 4-18 2011
Maurice East
DISTRICT SEVEN ENGINEER OF LOCAL ROADS AND STREETS

Releasing For Bid Based on Limited Review 4/18 2011
Roger L. Diebelus
DEPUTY DIRECTOR OF HIGHWAYS
REGION FOUR ENGINEER