

Q. WEST ABUTMENT
STA. 35B+06.50
P.G. ELEV. 535.22
T.A.E. 531.10

Q. EAST ABUTMENT
STA. 36B+58.83
P.G. ELEV. 535.22
TOP ABUT. ELEV. 531.10

PLAN VIEW
SKEW ANGLE = 0°

GENERAL NOTES

- The Contractor shall drive 2 test piles (1 each abutment) in a permanent location, to 110% of the nominal required bearings as specified for production piles as approved by the Engineer before ordering the remainder of the piles.
- Reinforcement bars shall conform to the requirements of AASHTO M31 or M322 Grade 60.
- The Metal Pile Shells shall be according to ASTM A252 Grades 2 or 3.
- Layout of the slope protection system may be varied to suit ground conditions in the field as directed by the Engineer.

DESIGN SPECIFICATIONS

"LRFD Guide Specifications for the Design of Pedestrian Bridges"

DESIGN STRESSES

FIELD UNITS
f'c = 4,000 psi
Fy = 60,000 psi (reinforcement)

SEISMIC DATA

Seismic Performance Zone (SPZ) = 2
Design Spectral Acceleration at 1.0 sec. (S₀₁) = 0.211g
Design Spectral Acceleration at 0.2 sec. (S₀₅) = 0.471g
Soil Site Class = D

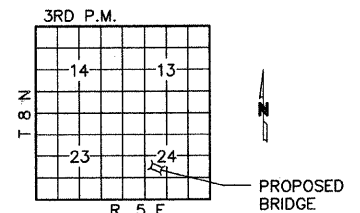
TOTAL BILL OF MATERIAL

Item	Unit	Super	Sub.		Total
			Piers	Abuts.	
Pedestrian Truss Superstructure	Sq. Ft.	1,500			1,500
Concrete Structures	Cu.Yds.		68.0	68.0	68.0
Reinforcement Bars	Pound		9,680	9,680	9,680
Furnishing Metal Pile Shells 12" X 0.179"	Foot		880	880	880
Driving Piles	Foot		880	880	880
Test Pile Metal Shells	Each		2	2	2
Name Plates	Each		1	1	1
Granular Backfill	Cu. Yd		60	60	60
Stone Riprap, Class A5	Tons		775	775	775
Aggregate (Erosion Control)	Tons		320	320	320
Filter Fabric	Sq. Yd.		775	775	775
Channel Excavation	Cu.Yds.		130	130	130

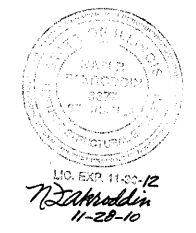
THIS STRUCTURAL SEAL COVERS THE PEDESTRIAN TRUSS SUPERSTRUCTURE ABUTMENTS.

INDEX OF SHEETS

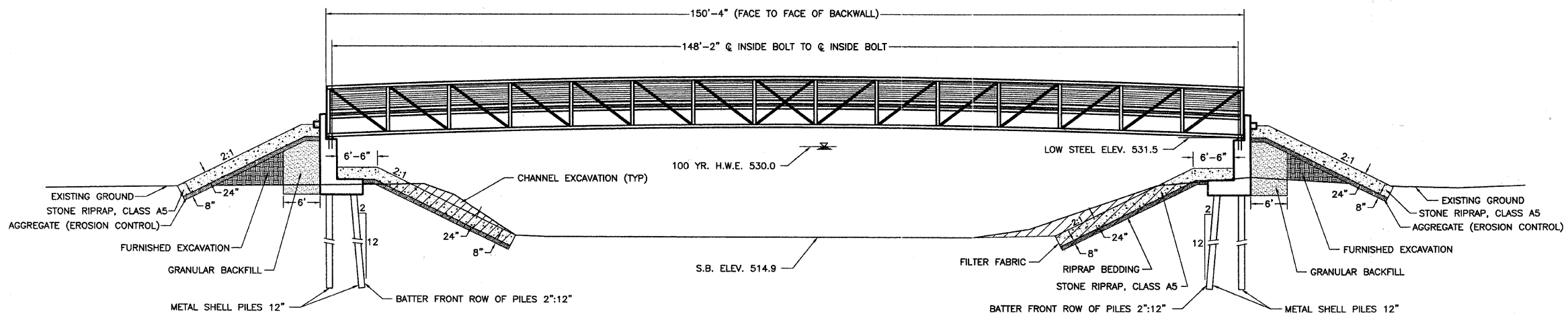
- General Plan & Elevation
- Bridge Details, Boring
- Abutment Plan - Dimensions
- Abutment Plan - Reinforcement
- Abutment - Sections and Details



LOCATION SKETCH



A SEPARATE STRUCTURAL SEAL WILL BE PROVIDED BY THE PEDESTRIAN TRUSS SUPERSTRUCTURE MANUFACTURER.



PROFILE VIEW

PILE DATA (2-ABUTS.)

Type	Metal Shell Piles 12"
Nominal Required Bearing	223 kips
Factored Resistance Available	122 kips
Estimated Pile Length	40 Feet
Number of Production Piles	22
Number of Test Piles	2 (1 Each Abutment)

B.M. RT. STA. 35B+07
STEEL PIN
ELEV. 526.10

WATERWAY INFORMATION

Flood	Freq. Yr.	Q. C.F.S.	Opening Sq. Ft.		Nat. H.W.E.		Head - Ft.		Headwater El.	
			Exist.	Prop.	Exist.	Prop.	Exist.	Prop.		
Design	20	17,200	N/A	1477	527.9	N/A	0.10	N/A	528.0	528.0
Base	100	28,785	N/A	1800	530.0	N/A	0.07	N/A	530.1	530.1
Max. Record		31,500	N/A	1860	530.4	N/A	0.05	N/A	530.4	530.4
Max. Calc.	500	38,200	N/A	2005	531.4	N/A	0.05	N/A	531.4	531.4

STATION 35B+82.66
LITTLE WABASH RIVER
SEC. 10-00091-00-BT BUILT 20
EFFINGHAM COUNTY
PROJECT NO. TCSP-IL09(029)

LETTERING FOR NAME PLATE

Locate Name Plate at N.W. corner of Bridge. Contractor to coordinate permanent mounting on the bridge with the bridge manufacturer.

CHARLESTON ENGINEERING, INC.
CONSULTING ENGINEERS
106 NORTH KITCHELL
P.O. BOX 397
OLNEY, ILLINOIS 62450
(618) 392-0736
ILLINOIS DEPARTMENT OF PROFESSIONAL REGULATION REGISTRATION #184-003513

GENERAL PLAN & ELEVATION
PEDESTRIAN BRIDGE OVER LITTLE WABASH RIVER
SEC. 10-00091-00-BT
EFFINGHAM COUNTY
STATION 35B+82.66