

SUMMARY OF QUANTITIES

		Location		
Code No.	Item	Unit	Quantity	
20100210	TREE REMOVAL (OVER 15 UNITS DIAMETER)	UNIT	108	
20200100	EARTH EXCAVATION	CU YD	694	
20300100	CHANNEL EXCAVATION	CU YD	100	
20400800	FURNISHED EXCAVATION	CU YD	2375	
20700110	POROUS GRANULAR EMBANKMENT	TON	104	
28000305	TEMPORARY DITCH CHECKS	FOOT	40	
28100807	STONE DUMPED RIPRAP, CLASS A4	TON	200	
40200800	AGGREGATE SURFACE COURSE, TYPE B	TON	1120	
50100100	REMOVAL OF EXISTING STRUCTURES	EACH	1	
50300225	CONCRETE STRUCTURES	CU YD	25.0	
50300280	CONCRETE ENCASEMENT	CU YD	3.6	
50400605	PRECAST PRESTRESSED CONCRETE DECK BEAMS (33" DEPTH)	SQ FT	2273	
50800105	REINFORCEMENT BARS	POUND	3800	
* 50900205	STEEL RAILING, TYPE S1	FOOT	166	
51201600	FURNISHING STEEL PILES HP12X53	FOOT	549	
51202305	DRIVING PILES	FOOT	549	
51203600	TEST PILE STEEL HP12X53	EACH	1	
51500100	NAME PLATES	EACH	1	
542C1063	PIPE CULVERTS, CLASS C, TYPE 2 18"	FOOT	200	
* 63100075	TRAFFIC BARRIER TERMINAL, TYPE 5A	EACH	4	
* 63100167	TRAFFIC BARRIER TERMINAL, TYPE 1 (SPECIAL) TANGENT	EACH	4	
67100100	MOBILIZATION	L SUM	1	
* 78201000	TERMINAL MARKER - DIRECT APPLIED	EACH	4	
X2501000	SEEDING, CLASS 2 (SPECIAL)	ACRE	0.9	

* Specialty Item

GENERAL NOTES

- This section shall be constructed according to the plans, the Special Provisions, and the "Standard Specifications for Road and Bridge Construction", adopted January 1, 2007.
- Any reference to a Standard in these plans shall be interpreted to mean the edition as indicated by the sub-number listed in the Index of Sheets or the copy of the Standard included in these plans.
- If Ash trees are removed on the Project, the Contractor shall become familiar with and comply with measures specified by the Illinois Department of Agriculture (IDOA) to prevent the spread of the Emerald Ash Borer. The IDOA information for Ash tree removal can be found on the IDOA website at www.agr.state.il.us/eab.
- Roadway Centerline profiles refer to the finished surface.
- Existing utilities shown are located from surface observations or information provided by the respective utilities and must be considered approximate. There may be others, the exact location of which are unknown and not shown. The Contractor will be responsible for notifying the respective utilities before work is begun. Field marking of underground utilities may be obtained by providing a minimum of 48 hours advance notice through the J.U.L.I.E. system by calling 1-800-892-0123, or by direct contact with non-members of J.U.L.I.E.
- The Aggregate Surface Course, Type B gradation shall be CA 6 or CA 10. Only crushed stone will be approved for use on this project.
- The nominal thickness for surface course is shown on the Typical Sections, Standards, Schedules, or Special Details. The constructed thickness of the above item shall not be less than 90 percent of the nominal thickness at any location.

Factors used for quantity calculations are as follows:
 Porous Granular Embankment 2.1 tons/cu. yd.
 Stone Dumped Riprap 130 pounds/cu. ft.
 Aggregate Surface Course 2.1 tons/cu. yd.

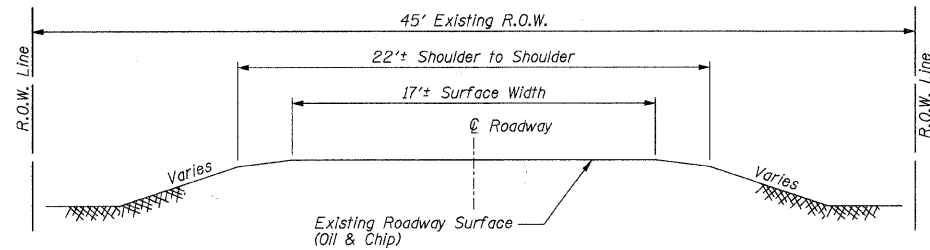
UTILITIES

Telephone: Frontier Communications of Midland, Inc.
 14450 Burnhaven Drive
 Burnsville, MN 55306
 800-921-8104

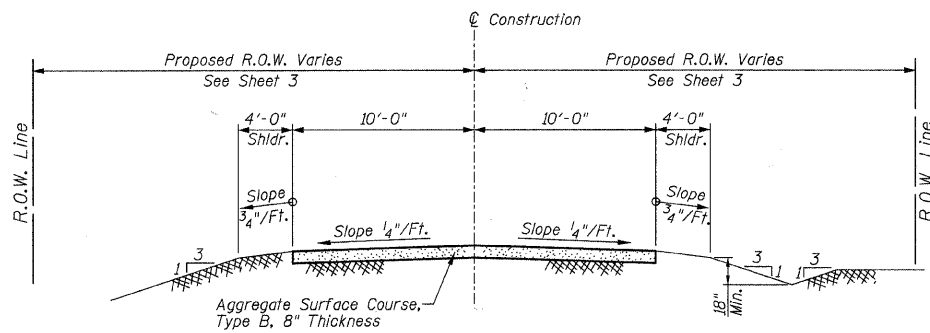
Electric: Southwestern Electric Cooperative, Inc.
 525 US Route 40
 Greenville, IL 62246
 Phone: 618-664-1025

**SUMMARY OF QUANTITIES, GENERAL NOTES,
 AND TYPICAL SECTIONS
 STRUCTURE NO. 026-3449**

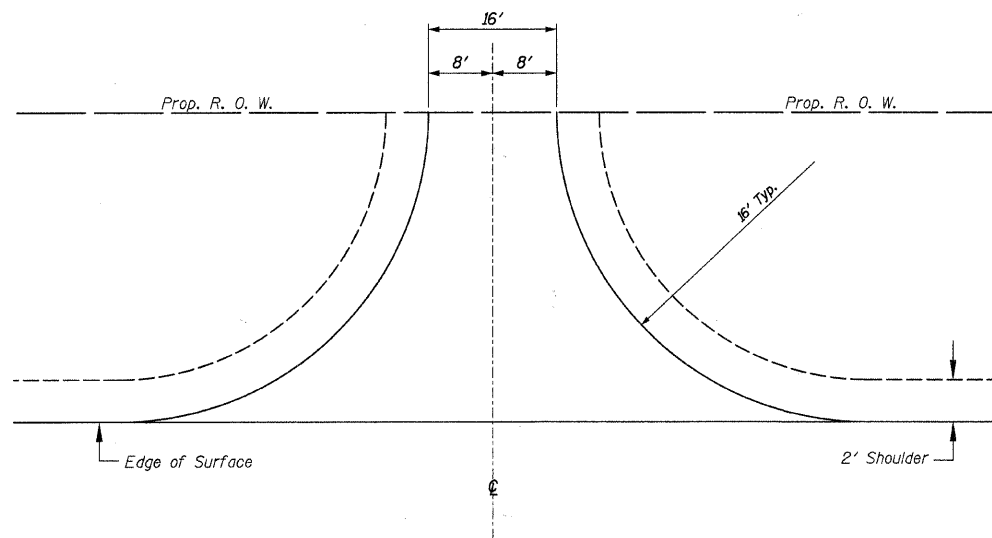
F.A.S. RTE.	SECTION	COUNTY	TOTAL SHEETS	SHEET NO.
1714	09-00119-00-BR	FAYETTE	12	2
CONTRACT NO. 95648				
ILLINOIS FED. AID PROJECT				



**TYPICAL SECTION
 EXISTING APPROACH ROADWAY**



**TYPICAL SECTION
 PROPOSED APPROACH ROADWAY**



TYPICAL FIELD ENTRANCE
 Aggregate Surface Course, Type B 6" Depth
 Lt. & Rt., Sta. 7+15 - 36 Ton Each
 Lt., Sta. 12+87 - 31 Ton
 Rt., Sta. 12+87 - 29 Ton
 Rt., Sta. 13+32 - 28 Ton
 (Included in Summary of Quantities)

03/25/2011 RAAI #50509