

GENERAL NOTES:

THIS SECTION SHALL BE CONSTRUCTED IN ACCORDANCE WITH THE PLANS, SPECIAL PROVISIONS AND "STANDARD SPECIFICATIONS FOR ROAD AND BRIDGE CONSTRUCTION", ADOPTED JANUARY 1, 2007.

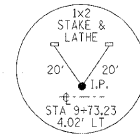
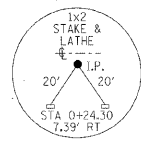
THE WORK INVOLVED ON THIS SECTION CONSISTS OF THE REMOVAL OF THE EXISTING STRUCTURE, THE CONSTRUCTION OF A 55 FOOT LONG SINGLE SPAN PRECAST PRESTRESSED CONCRETE DECK BEAM BRIDGE, EARTH APPROACHES, AGGREGATE SURFACE COURSE AND OTHER MISCELLANEOUS ITEMS NECESSARY TO COMPLETE THIS SECTION.

ALL ELEVATIONS ARE BASED ON U.S.G.S. MEAN SEA LEVEL DATUM.

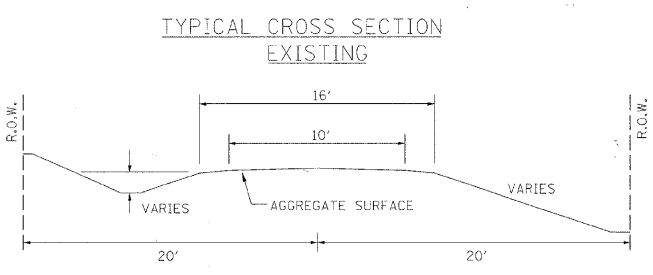
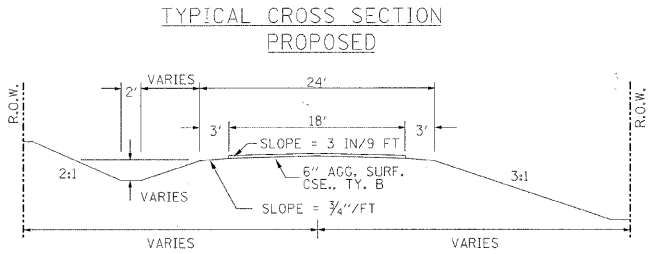
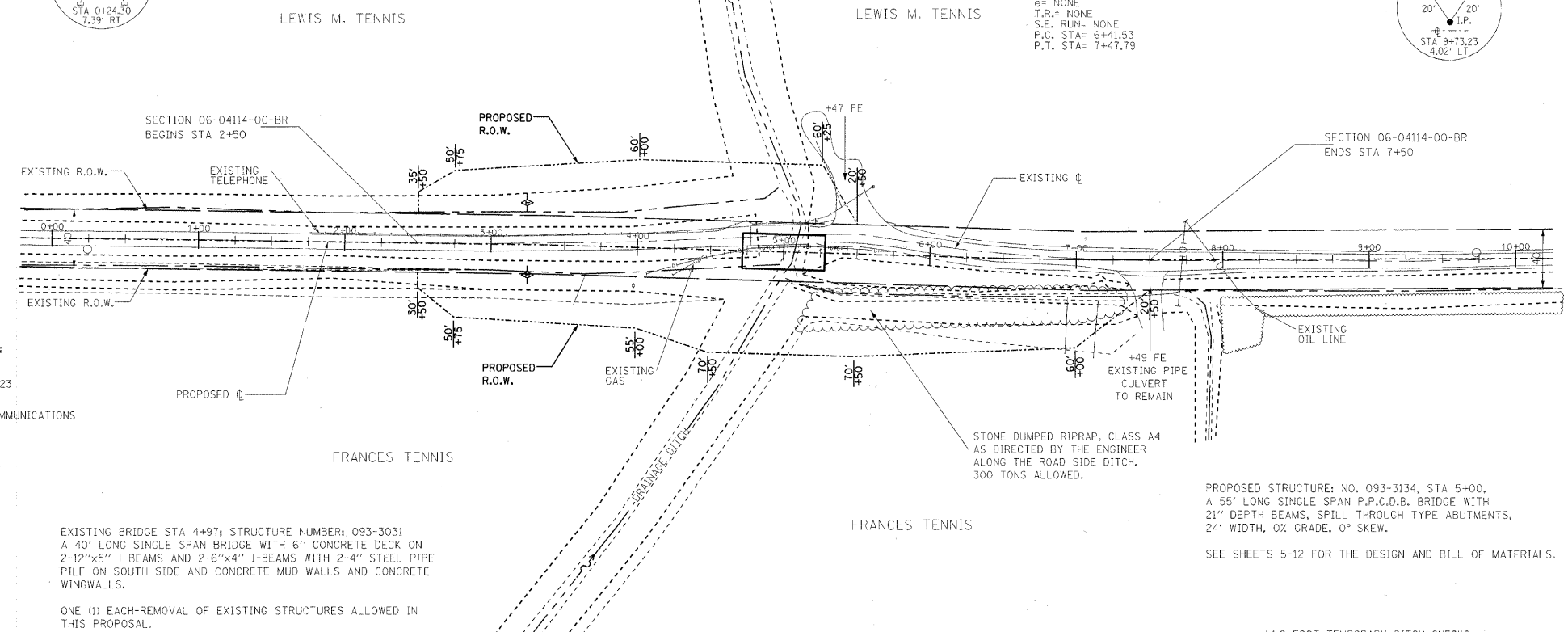
IT SHALL BE THE CONTRACTOR'S RESPONSIBILITY TO CONTACT ALL THE UTILITIES, AFFECTING THE PROJECT, PRIOR TO CONSTRUCTION.

THE QUANTITY SHOWN IN THE SUMMARY OF QUANTITIES FOR STONE DUMPED RIPRAP, CLASS A4 ALLOWS 300 TONS FOR THE NORTHEAST ROADSIDE DITCH AND 380 TON FOR THE BRIDGE.

NOTE: CONSTRUCTION TRANSITIONS
STA. 2+50 TO STA. 3+00
STA. 7+00 TO STA. 7+50
ALL QUANTITIES ARE INCLUDED IN THE PROPOSAL



CURVE #1
P.I. STA= 6+94.66
Δ° LT, 2°01'46"
D= 154.35'
R= 3000'
T= 53.14'
L= 106.26'
E= 0.47'
B= NONE
T.R.= NONE
S.E. RUN= NONE
P.C. STA= 6+41.53
P.T. STA= 7+47.79



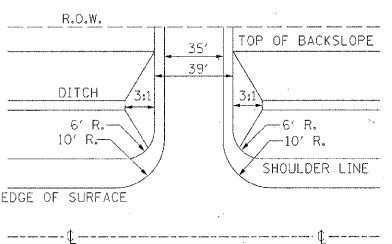
UTILITIES:
J.U.L.I.E.
1-800-892-0123
FRONTIER COMMUNICATIONS
618-395-6195
COUNTRYMARK
812-838-8501

EXISTING BRIDGE STA 4+97; STRUCTURE NUMBER: 093-3031
A 40' LONG SINGLE SPAN BRIDGE WITH 6" CONCRETE DECK ON 2-12"x5" I-BEAMS AND 2-6"x4" I-BEAMS WITH 2-4" STEEL PIPE PILE ON SOUTH SIDE AND CONCRETE MUD WALLS AND CONCRETE WINGWALLS.

ONE (1) EACH-REMOVAL OF EXISTING STRUCTURES ALLOWED IN THIS PROPOSAL.

PROPOSED STRUCTURE: NO. 093-3134, STA 5+00, A 55' LONG SINGLE SPAN P.P.C.D.B. BRIDGE WITH 21" DEPTH BEAMS, SPILL THROUGH TYPE ABUTMENTS, 24" WIDTH, 0% GRADE, 0° SKEW.
SEE SHEETS 5-12 FOR THE DESIGN AND BILL OF MATERIALS.

FIELD ENTRANCE DETAIL



NOTE: CONSTRUCT SPECIAL DITCH
STA 2+50 TO STA 4+70 LT
STA 2+50 TO STA 4+70 RT
STA 5+30 TO STA 7+30 RT

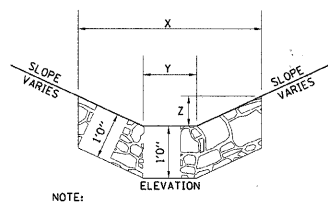
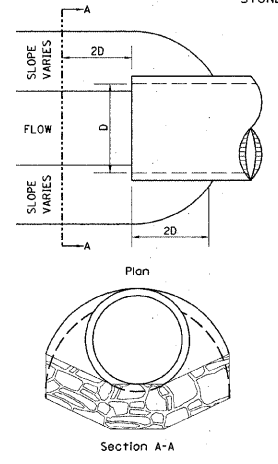
NOTE: CONSTRUCT STONE LINED DITCH
STA 4+00 TO STA 4+70 LT (0.62 TON/LIN FT)
STA 4+00 TO STA 4+70 RT (0.62 TON/LIN FT)
87 TON STONE LINED DITCH ALLOWED IN PROPOSAL.

SEE STONE LINED DITCH DETAIL.

NOTE: FIELD TILE ADJUSTMENT
STA 3+64.8 LT AND STA 6+94.2 LT
2 EACH FIELD TILE ADJUSTMENT

NOTE: PIPE CULVERT REMOVAL (SPECIAL)
STA. 7+15 LT WEST 5 FOOT

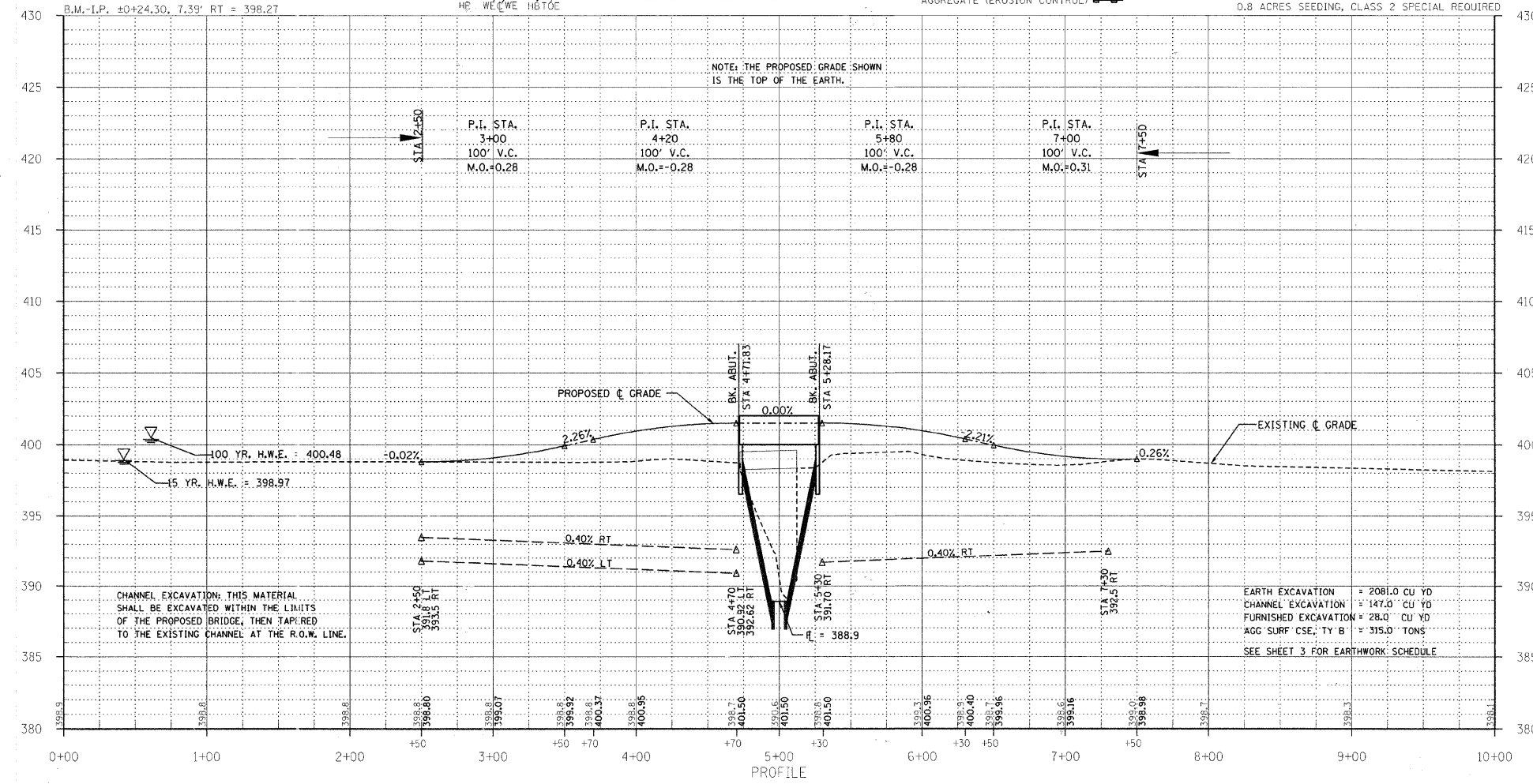
STONE LINED DITCH DESIGN



NOTE:

BOTTOM OF DITCH	SLOPE	TON/LIN. FT
1 1/2:1	2:1	3:1
2 FT	X= 5 FT	6 FT 8 FT
	Y= 2 FT	2 FT 2 FT
	Z= 1 FT	1 FT 1 FT
	0.40	0.48 0.62

NOTE: FOR PLACEMENT, QUALITY GRADATION AND OTHER MISCELLANEOUS REQUIREMENTS FOR STONE LINED DITCH-SEE SPECIAL PROVISIONS.



CHANNEL EXCAVATION: THIS MATERIAL SHALL BE EXCAVATED WITHIN THE LIMITS OF THE PROPOSED BRIDGE, THEN TAPERED TO THE EXISTING CHANNEL AT THE R.O.W. LINE.

EARTH EXCAVATION = 2081.0 CU YD
CHANNEL EXCAVATION = 147.0 CU YD
FURNISHED EXCAVATION = 28.0 CU YD
AGG SURF CSE: TY B = 315.0 TONS
SEE SHEET 3 FOR EARTHWORK SCHEDULE

T.R.	SECTION	COUNTY	TOTAL SHEETS	SHEET NO.
52	06-04114-00-BR	WABASH	13	2

323 W. 3RD ST.
P.O. BOX 160
MT. CARMEL, IL 62863
PHONE: (618)-262-8651
FAX: (618)-263-3327

405 W. STATE ST.
SUITE 1
PRINCETON, IN 47670
PHONE: (812)-386-7611
FAX: (812)-385-2812

LAMAC ENGINEERING CO.

PROFESSIONAL DESIGN FIRM
LAND SURVEY & PROFESSIONAL ENGINEERING CORPORATION
184-000887
(62-032435)(35-002769)

AARON M. MEFFORD
REGISTERED PROFESSIONAL ENGINEER OF ILLINOIS
56284

NAME: Aaron M. Mefford
SIGNATURE: [Signature]
DATE: 4-13-11
11-30-11 EXPIRES

DRAINAGE DITCH
TOWNSHIP ROUTE 52
WABASH COUNTY, ILLINOIS

SHEET TITLE:
PLAN & PROFILE

SCALE: VARIES
BY: AMM
DATE: 4/31/11
REV:

2 OF 13 SHEETS
SHEET NO. 2