

STATE OF ILLINOIS  
 DEPARTMENT OF TRANSPORTATION  
 DIVISION OF HIGHWAYS  
 PLANS FOR PROPOSED  
 FEDERAL AID SECONDARY PROJECT  
 SURFACE TRANSPORTATION RURAL  
 JASPER COUNTY

SECTION 09-00115-00-FP  
 F.A.S. 2711 - COUNTY HIGHWAY 10  
 JOB NO. C-97-054-11  
 PROJECT NO. RS-2711(101)

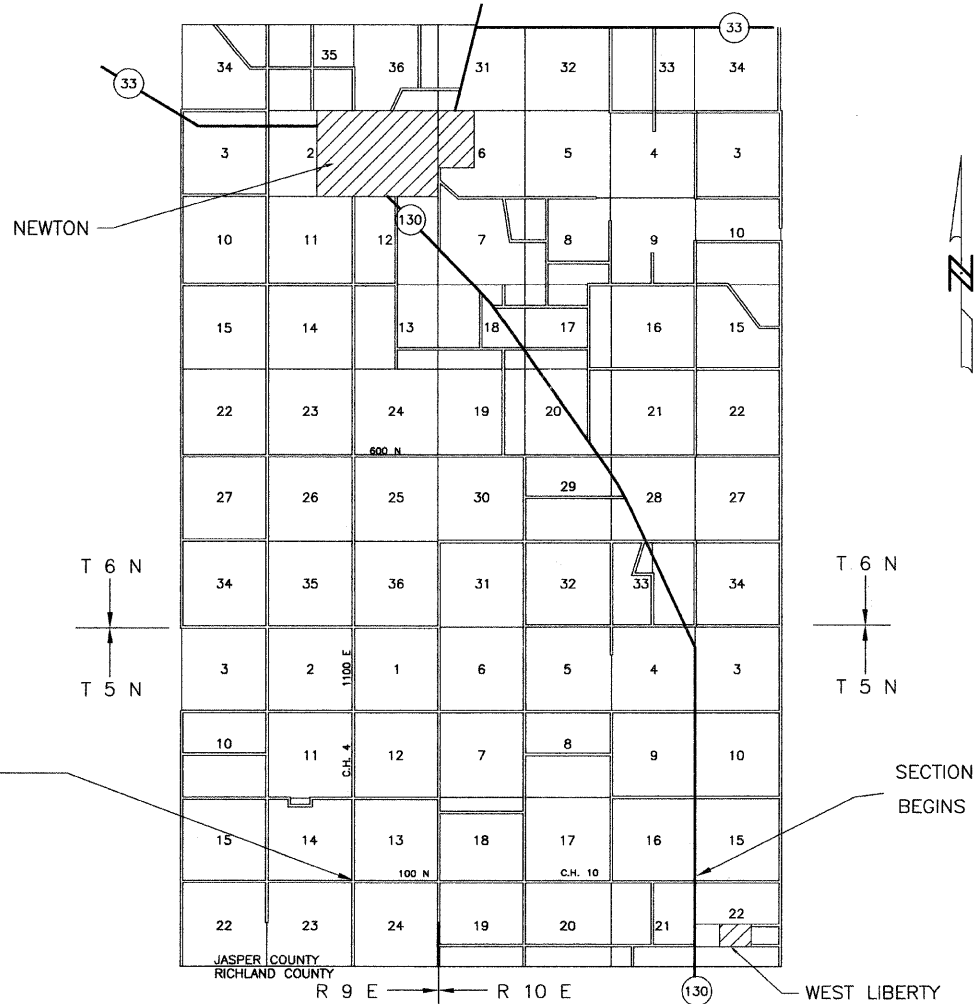
ROUTE	SECTION	COUNTY	TOTAL SHEETS	SHEET NO.
F.A.S. 2711	09-00115-00-FP	JASPER	2	1
CONTRACT NO. 95654		ILLINOIS	PROJECT RS-2711(101)	

THESE PLANS WERE PREPARED BY ME, OR A FULL TIME MEMBER OF MY STAFF, WORKING UNDER MY PERSONAL SUPERVISION.

*Richard O. Potters* 4-15-11  
 ILLINOIS REG. PROF. ENG. 38893 DATE  
 LICENSE EXPIRES 11/30/11  
 12871 EAST STATE HWY 33  
 NEWTON, ILLINOIS 62448  
 PHONE 618-783-2915

INDEX OF SHEETS

SHEET	ITEM
1	COVER SHEET
2	SUMMARY OF QUANTITIES STANDARD 000001-06 STANDARD 701901-01 BLR-21-8



SECTION 09-00115-00-FP ENDS STA. 208+49.59

SECTION 09-00115-00-FP BEGINS STA. 0+00.00

RURAL MAJOR COLLECTOR  
 ADT = 275  
 DESIGN SPEED = 40 MPH

CONTRACT NO. 95654

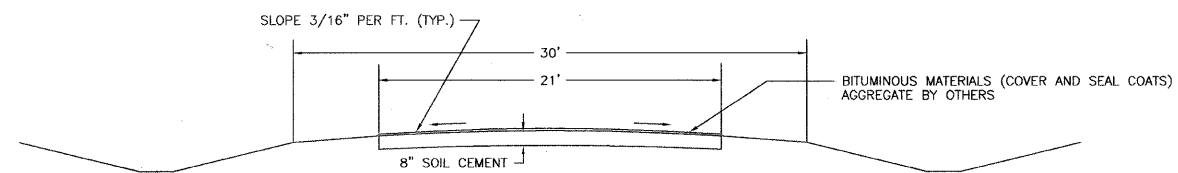
Joint Utility Locating Information for Excavators  
 JULIE 1-800-892-0123

NET LENGTH SECTION 09-00115-00-FP = 20,849.59 Ft. = 3.949 Mi.

APPROVED	<u>4-15</u>	<u>20 11</u>
	<i>Richard O. Potters</i> COUNTY ENGINEER	
STATE OF ILLINOIS DEPARTMENT OF TRANSPORTATION		
PASSED	<u>4/15</u>	<u>20 11</u>
	<i>Maureen J. Cant</i> DISTRICT SEVEN ENGINEER OF LOCAL ROADS AND STREETS	
Releasing For Bid Based on Limited Review	<u>4/15</u>	<u>20 11</u>
	<i>Roger L. Durbell</i> DEPUTY DIRECTOR OF HIGHWAYS REGION FOUR ENGINEER	

ROUTE	SECTION	COUNTY	TOTAL SHEETS	SHEET NO.
F.A.S. 2711	09-00115-00-FP	JASPER	2	2
CONTRACT NO. 95654		ILLINOIS	PROJECT RS-2711(101)	

TYPICAL SECTION OF PROPOSED IMPROVEMENT



STA. 0+00.0 TO STA. 208+49.59

PAVEMENT DESIGN DATA

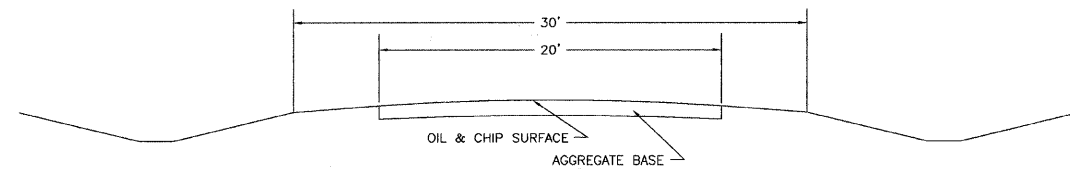
CLASS IV ROAD  
 STRUCTURAL DESIGN TRAFFIC (S.D.T.) 2032 PC = 242  
 SU = 25  
 MU = 8

MINIMUM SOIL SUPPORT: I.B.U. = 3  
 PERCENT OF S.D.T. IN TRAFFIC LANE P = 50%  
 S = 50%  
 M = 50%

TRAFFIC FACTOR = 0.009  
 STRUCTURAL NUMBER = 1.20

PAVEMENT STRUCTURE MATERIALS:  
 STAGE 1 - 8" SOIL-CEMENT BASE COURSE (500 PSI MIN.)  
 A-2 SEAL COAT (AGGREGATE BY OTHERS)  
 STAGE 2 - 2" H.M.A. 21' WIDE (FUTURE)

TYPICAL SECTION OF EXISTING ROAD



STA. 0+00.0 TO STA. 208+49.59

SECTION 09-00115-00-FP  
 SUMMARY OF QUANTITIES

QUANTITY	UNIT	ITEM	CODE NUMBER
48,649	SQ. YD.	PROCESSING SOIL-CEMENT BASE COURSE 8"	35200300
32,434	100 WT.	CEMENT	35200500
29,190	GALLON	BITUMINOUS MATERIALS (COVER AND SEAL COATS)	40300300
1	LUMP SUM	MOBILIZATION	67100100