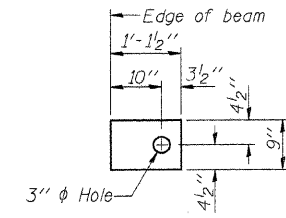


FABRIC BEARING PAD

(Interior)
(12 Required)



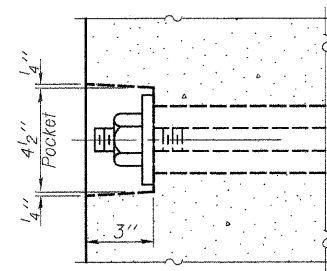
FABRIC BEARING PAD

FIXED

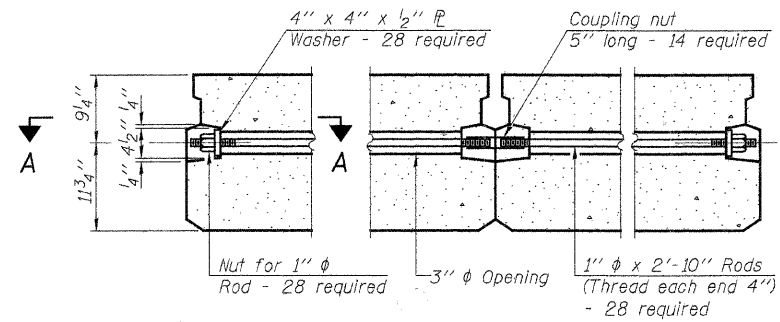
(Exterior)
(8 Required)

Notes:

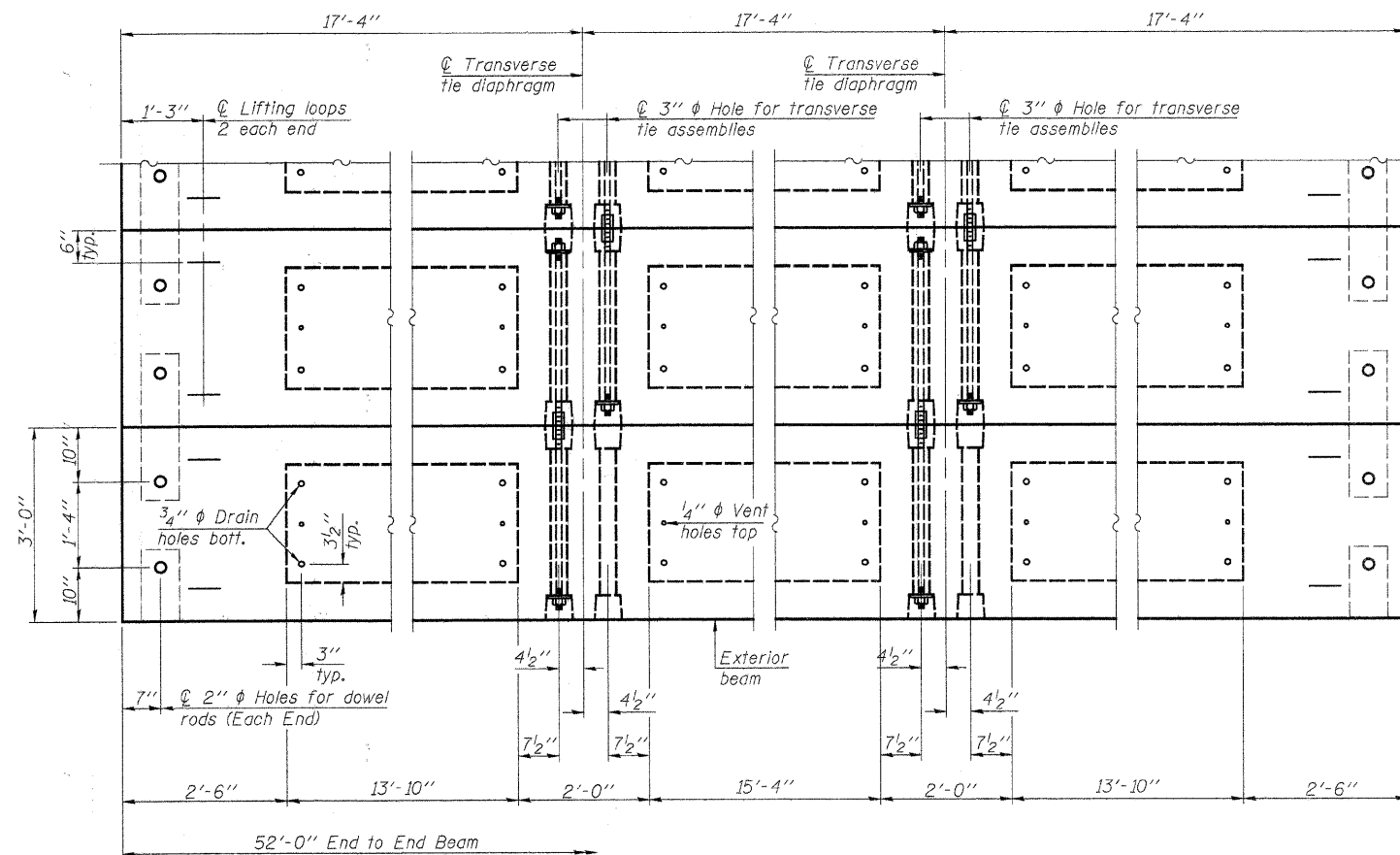
All bearing pads shall be 1" thick.
Omit holes when using expansion bearings.
Expansion bearing pad shall be bonded to the substructure.



SECTION A-A

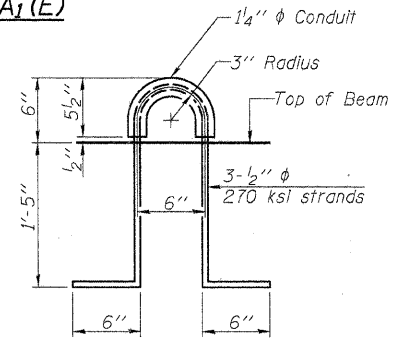
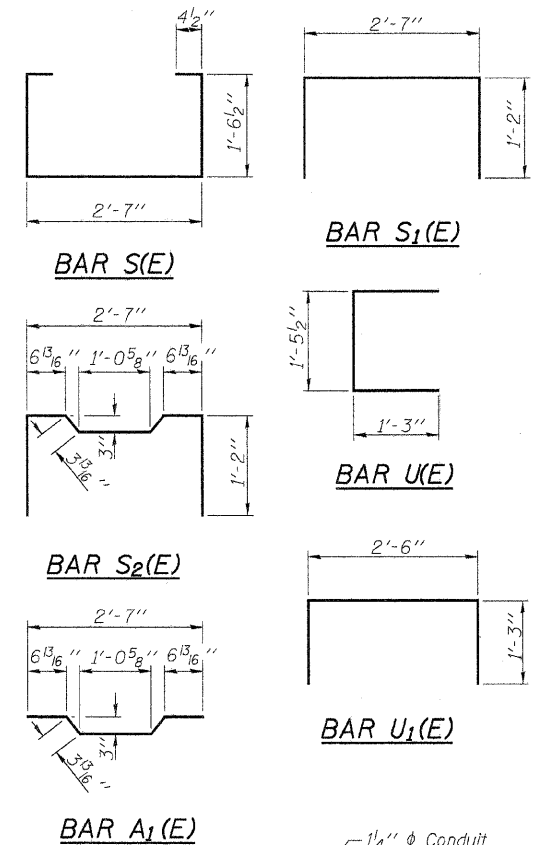


TYPICAL TRANSVERSE TIE ASSEMBLY



PLAN VIEW

Note: Connect beams in pairs with the transverse tie configuration shown.



LIFTING LOOP DETAIL

NOTES

Prestressing steel shall be uncoated high strength, low relaxation 7-wire strand, Grade 270. The nominal diameter shall be 1/2" and the nominal cross-sectional area shall be 0.153 sq. in. The 1" rods in the transverse tie assembly shall be tightened to a snug fit and the threads set. Pockets on exterior faces of bridge shall be filled with grout after transverse tie assembly is in place.
Reinforcement bars shall conform to ASTM A 706, Grade 60.
Two 1/8" fabric adjusting shims of the dimensions of the exterior bearing pad shall be provided for each bearing pad location. (40 Required)
A minimum 2 1/2" diameter lifting pin shall be used to engage the lifting loops during handling.
Corrosion inhibitor, per Article 1020.05(b)(12) and 1021.06 of the Standard Specifications, shall be used in the concrete for precast prestressed concrete deck beams.
Compressive strength of prestressed concrete, f'c, shall be 6000 psi.
Compressive strength of prestressed concrete at release, f'ci, shall be 5000 psi.
Roll post inserts, specified elsewhere, shall be cast into the exterior face of the outside beams. See Special Provisions for review and distribution of shop drawings.

BILL OF MATERIAL - SPAN 2

Precast Prestressed Conc. Deck Bms. (21" depth)	Sq. Ft.	1,248
Estimated Total Weight (One Beam) = 31,500 Pounds		

PD-2136-0D

7-1-10

FILE NAME = 46836U_SUPER.DGN	USER NAME = S.A.P.	DESIGNED - J.A.M.	REVISED -
		CHECKED - S.F.M.	REVISED -
	PLOT SCALE =	DRAWN - S.A.P.	REVISED -
	PLOT DATE = 04/04/11	CHECKED - J.A.M., S.F.M. & A.R.K.	REVISED -

FEHR-GRAHAM & ASSOCIATES, LLC
ENGINEERING AND SCIENCE CONSULTANTS
FREEPORT, IL ROCKFORD, IL ROCHELLE, IL MONROE, WI SPRINGFIELD, IL

21" x 36" PPC DECK BEAM DETAILS - SPAN 2
S.N. 087-3560

TWP. RTE.	SECTION	COUNTY	TOTAL SHEETS	SHEET NO.
283A	06-02119-00-BR	SHELBY	22	10
ILLINOIS			CONTRACT NO. 95657	
BIG SPRING ROAD DISTRICT				