

F.A.U. ROUTE	SECTION	COUNTY	TOTAL SHEETS	SHEET NUMBER
9148	06-00059-00-PV 03-00059-01-PV	ST. CLAIR	61	3
STA 978+71.62 TO		STA. 1032+57.37		
FEDERAL AID PROJECT			CONTRACT 97447	

SUMMARY OF QUANTITIES

CODE NO.	ITEM	UNIT	TOTAL QUANTITY
20100110	TREE REMOVAL (6 TO 15 UNITS DIAMETER)	UNIT	59
20100210	TREE REMOVAL (OVER 15 UNITS DIAMETER)	UNIT	28
20200100	EARTH EXCAVATION	CU YD	5,186
20201200	REMOVAL AND DISPOSAL OF UNSUITABLE MATERIAL	CU YD	3,487
20400800	FURNISHED EXCAVATION	CU YD	1,843
20800150	TRENCH BACKFILL	CU YD	1,739
25000100	SEEDING, CLASS 1	ACRE	2
25000400	NITROGEN FERTILIZER NUTRIENT	POUND	189
25000500	PHOSPHORUS FERTILIZER NUTRIENT	POUND	189
25000600	POTASSIUM FERTILIZER NUTRIENT	POUND	189
25100115	MULCH, METHOD 2	ACRE	2
28000250	TEMPORARY EROSION CONTROL SEEDING	POUND	209
28000300	TEMPORARY DITCH CHECKS	FOOT	20
28000400	PERIMETER EROSION BARRIER	FOOT	3,860
28000500	INLET AND PIPE PROTECTION	EACH	9
28100707	STONE DUMPED RIPRAP, CLASS A4	SQ YD	136
28200200	FILTER FABRIC	SQ YD	136
30200650	PROCESSING MODIFIED SOIL 12"	SQ YD	20,286
30201500	LIME	TON	392
31100910	SUB-BASE GRANULAR MATERIAL, TYPE A 12"	SQ YD	4,863
35101400	AGGREGATE BASE COURSE, TYPE B	TON	74
40200800	AGGREGATE SURFACE COURSE, TYPE B	TON	61
40201000	AGGREGATE FOR TEMPORARY ACCESS	TON	350
40600100	BITUMINOUS MATERIALS (PRIME COAT)	GALLON	1,802
40600300	AGGREGATE (PRIME COAT)	TON	34
40600895	CONSTRUCTING TEST STRIP	EACH	2
40603085	HOT-MIX ASPHALT BINDER COURSE, IL-19.0, N70	TON	7,071
40603340	HOT-MIX ASPHALT SURFACE COURSE, MIX "D", N70	TON	2,383
40800050	INCIDENTAL HOT-MIX ASPHALT SURFACING	TON	28
42000200	PORTLAND CEMENT CONCRETE PAVEMENT 7"	SQ YD	352
42000300	PORTLAND CEMENT CONCRETE PAVEMENT 8"	SQ YD	122
42001200	PAVEMENT FABRIC	SQ YD	352
42001300	PROTECTIVE COAT	SQ YD	6,345
42300200	PORTLAND CEMENT CONCRETE DRIVEWAY PAVEMENT, 6 INCH	SQ YD	214
42400100	PORTLAND CEMENT CONCRETE SIDEWALK 4 INCH	SQ FT	17,278
42400300	PORTLAND CEMENT CONCRETE SIDEWALK 6 INCH	SQ FT	978
42400800	DETECTABLE WARNINGS	SQ FT	376
44000100	PAVEMENT REMOVAL	SQ YD	14,485
44000155	HOT-MIX ASPHALT SURFACE REMOVAL, 1-1/2"	SQ YD	314
44000200	DRIVEWAY PAVEMENT REMOVAL	SQ YD	227
44000500	COMBINATION CURB AND GUTTER REMOVAL	FOOT	565
44000600	SIDEWALK REMOVAL	SQ FT	821
50100100	REMOVAL OF EXISTING STRUCTURES	EACH	1
50105220	PIPE CULVERT REMOVAL	FOOT	543
54200215	PIPE CULVERTS, CLASS D, TYPE 1, 10"	FOOT	20
54200220	PIPE CULVERTS, CLASS D, TYPE 1, 15"	FOOT	55
54213665	PRECAST REINFORCED CONCRETE FLARED END SECTIONS 18"	EACH	1
54213666	PRECAST REINFORCED CONCRETE FLARED END SECTIONS 24"	EACH	2
54213675	PRECAST REINFORCED CONCRETE FLARED END SECTIONS 30"	EACH	1
54213687	PRECAST REINFORCED CONCRETE FLARED END SECTIONS 42"	EACH	1
550A2320	STORM SEWERS, RUBBER GASKET, CLASS A, TYPE 1 12"	FOOT	733
550A2330	STORM SEWERS, RUBBER GASKET, CLASS A, TYPE 1 15"	FOOT	675

SUMMARY OF QUANTITIES

CODE NO.	ITEM	UNIT	TOTAL QUANTITY
550A2340	STORM SEWERS, RUBBER GASKET, CLASS A, TYPE 1 18"	FOOT	518
550A2360	STORM SEWERS, RUBBER GASKET, CLASS A, TYPE 1 24"	FOOT	413
550A2380	STORM SEWERS, RUBBER GASKET, CLASS A, TYPE 1 30"	FOOT	12
550A2400	STORM SEWERS, RUBBER GASKET, CLASS A, TYPE 1 36"	FOOT	54
550A2520	STORM SEWERS, RUBBER GASKET, CLASS A, TYPE 2 12"	FOOT	554
550A2530	STORM SEWERS, RUBBER GASKET, CLASS A, TYPE 2 15"	FOOT	1,329
550A2540	STORM SEWERS, RUBBER GASKET, CLASS A, TYPE 2 18"	FOOT	396
550A2560	STORM SEWERS, RUBBER GASKET, CLASS A, TYPE 2 24"	FOOT	260
55100500	STORM SEWER REMOVAL 12"	FOOT	36
55100700	STORM SEWER REMOVAL 15"	FOOT	385
55101200	STORM SEWER REMOVAL 24"	FOOT	98
55101600	STORM SEWER REMOVAL 36"	FOOT	32
55101800	STORM SEWER REMOVAL 42"	FOOT	64
56109210	WATER VALVES TO BE ADJUSTED	EACH	4
60218500	MANHOLES, TYPE A, 4'-DIAMETER, TYPE 2 FRAME AND GRATE	EACH	1
60219540	MANHOLES, TYPE A, 4'-DIAMETER, TYPE 2 1/4 FRAME AND GRATE	EACH	5
60221000	MANHOLES, TYPE A, 5'-DIAMETER, TYPE 1 FRAME, OPEN LID	EACH	1
60221100	MANHOLES, TYPE A, 5'-DIAMETER, TYPE 1 FRAME, CLOSED LID	EACH	1
60222240	MANHOLES, TYPE A, 5'-DIAMETER, TYPE 2 1/4 FRAME AND GRATE	EACH	4
60224039	MANHOLES, TYPE A, 6'-DIAMETER, TYPE 2 1/4 FRAME AND GRATE	EACH	2
60235700	INLETS, TYPE A, TYPE 3 FRAME AND GRATE	EACH	2
60236200	INLETS, TYPE A, TYPE 8 GRATE	EACH	1
60237470	INLETS, TYPE A, TYPE 24 FRAME AND GRATE	EACH	2
60240215	INLETS, TYPE B, TYPE 1 FRAME, CLOSED LID	EACH	1
60240220	INLETS, TYPE B, TYPE 3 FRAME AND GRATE	EACH	1
60240327	INLETS, TYPE B, TYPE 23 FRAME AND GRATE	EACH	1
60240328	INLETS, TYPE B, TYPE 24 FRAME AND GRATE	EACH	5
60255500	MANHOLES TO BE ADJUSTED	EACH	1
60500060	REMOVING INLETS	EACH	8
60600095	CLASS SI CONCRETE (OUTLET)	CU YD	5.5
60605000	COMBINATION CONCRETE CURB AND GUTTER, TYPE B-6.24	FOOT	10,871
60606200	COMBINATION CONCRETE CURB AND GUTTER, TYPE B-9.12 (MODIFIED)	FOOT	151
60608300	COMBINATION CONCRETE CURB AND GUTTER, TYPE M-2.12	FOOT	258
60619800	CONCRETE MEDIAN, TYPE SB-6.12	SQ FT	1,994
60624600	CORRUGATED MEDIAN	SQ FT	1,957
* 63000001	STEEL PLATE BEAM GUARDRAIL, TYPE A, 6 FOOT POSTS	FOOT	12.5
* 63100167	TRAFFIC BARRIER TERMINAL TYPE 1, (SPECIAL) TANGENT	EACH	1
63200310	GUARDRAIL REMOVAL	FOOT	47
67100100	MOBILIZATION	L SUM	1
70300100	SHORT-TERM PAVEMENT MARKING	FOOT	2,272
* 70300210	TEMPORARY PAVEMENT MARKING-LETTERS AND SYMBOLS	SQ FT	474.6
* 70300220	TEMPORARY PAVEMENT MARKING-LINE 4"	FOOT	14,358
* 70300240	TEMPORARY PAVEMENT MARKING-LINE 6"	FOOT	125
* 70300260	TEMPORARY PAVEMENT MARKING-LINE 12"	FOOT	437
* 70300280	TEMPORARY PAVEMENT MARKING-LINE 24"	FOOT	334
70301000	WORK ZONE PAVEMENT MARKING REMOVAL	SQ FT	383
72000100	SIGN PANEL-TYPE 1	SQ FT	290
72000200	SIGN PANEL-TYPE 2	SQ FT	32
72800100	TELESCOPING STEEL SIGN SUPPORT	FOOT	72
72900100	METAL POST-TYPE A	FOOT	48
72900200	METAL POST-TYPE B	FOOT	421
73000100	WOOD SIGN SUPPORT	FOOT	30

SUMMARY OF QUANTITIES

CODE NO.	ITEM	UNIT	TOTAL QUANTITY
73100100	BASE FOR TELESCOPING STEEL SIGN SUPPORT	EACH	8
* 78000100	THERMOPLASTIC PAVEMENT MARKING-LETTERS & SYMBOLS	SQ FT	474.6
* 78000200	THERMOPLASTIC PAVEMENT MARKING-LINE 4"	FOOT	14,358
* 78000400	THERMOPLASTIC PAVEMENT MARKING-LINE 6"	FOOT	125
* 78000600	THERMOPLASTIC PAVEMENT MARKING-LINE 12"	FOOT	437
* 78000650	THERMOPLASTIC PAVEMENT MARKING-LINE 24"	FOOT	334
* 78008230	POLYUREA PAVEMENT MARKING TYPE 1 - LINE 6"	FOOT	75
* 78008270	POLYUREA PAVEMENT MARKING TYPE 1 - LINE 24"	FOOT	33
* 78200300	PRISMATIC CURB REFLECTORS	EACH	66
* 78200410	GUARDRAIL MARKERS, TYPE A	EACH	1
78201000	TERMINAL MARKERS - DIRECT APPLIED	EACH	1
X0976500	END SECTIONS TO BE REMOVED	EACH	3
X5427600	REMOVE AND RELOCATE END SECTIONS	EACH	2
X6024242	INLETS, SPECIAL, NO. 1	EACH	7
X6024244	INLETS, SPECIAL, NO. 2	EACH	2
X6024246	INLETS, SPECIAL, NO. 3	EACH	38
X6024248	INLETS, SPECIAL, NO. 4	EACH	6
X7010216	TRAFFIC CONTROL AND PROTECTION (SPECIAL)	LSUM	1
* X7800100	PAINT PAVEMENT MARKING - RAISED MEDIAN	SQ FT	342
Z0022800	FENCE REMOVAL	FOOT	419
Z0056608	STORM SEWER (WATER MAIN REQUIREMENTS) 12 INCH	FOOT	34
Z0056610	STORM SEWER (WATER MAIN REQUIREMENTS) 15 INCH	FOOT	283
Z0056612	STORM SEWER (WATER MAIN REQUIREMENTS) 18 INCH	FOOT	295
Z0056616	STORM SEWER (WATER MAIN REQUIREMENTS) 24 INCH	FOOT	33
Z0056624	STORM SEWER (WATER MAIN REQUIREMENTS) 42 INCH	FOOT	101
XX008481	REMOVE AND RELAY STORM SEWER 18"	FOOT	44
△ Z0076600	TRAFFIC MARKINGS	HOUR	500

* SPECIALTY ITEM
△ 0042

REVISIONS		
SYMBOL	DESCRIPTION	DATE
△	QUANTITIES REVISED	5/16/11

MANHOLE AND INLET SCHEDULE

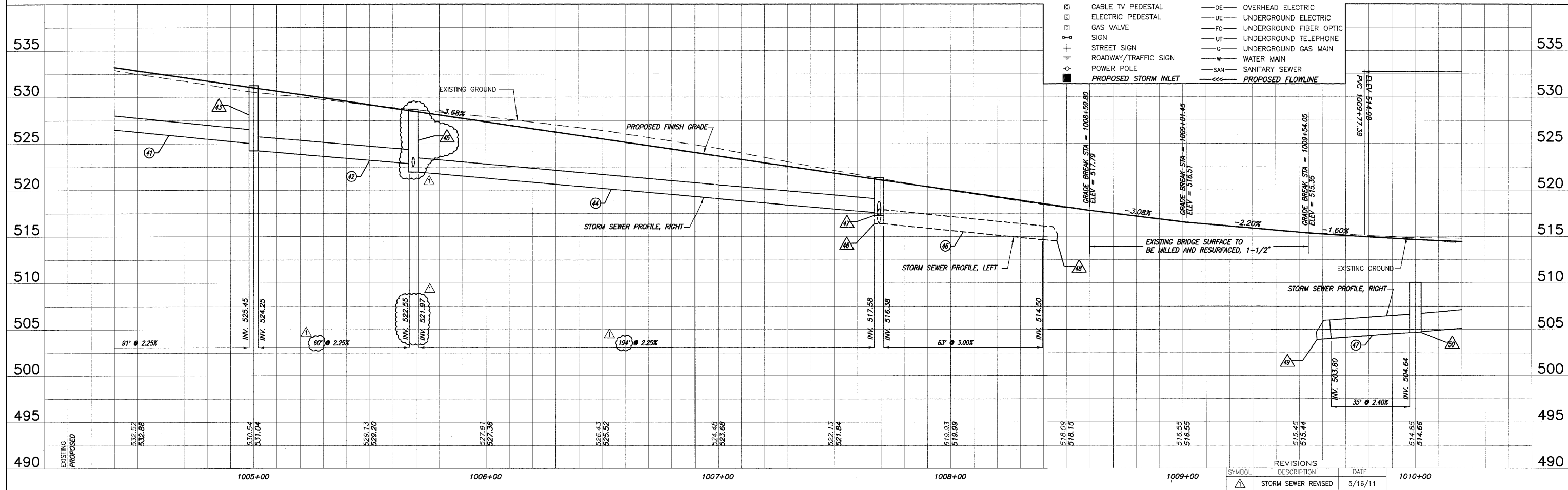
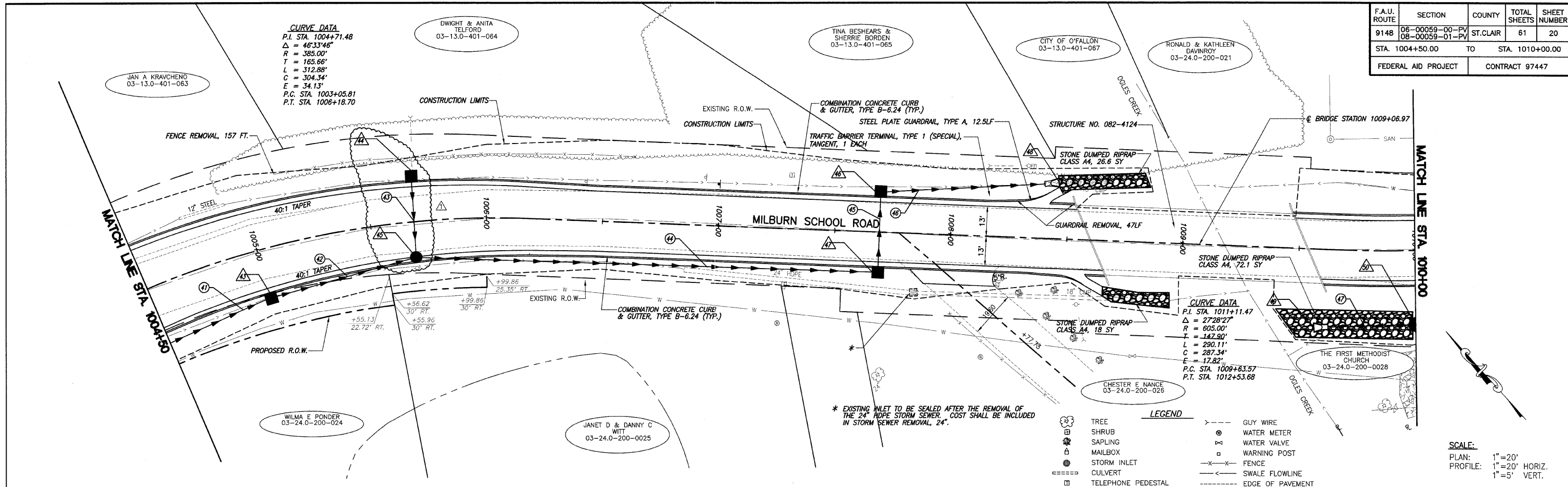
F.A.U. ROUTE 9148 SECTION 06-00059-00-PV COUNTY ST. CLAIR TOTAL SHEETS 61 SHEET NUMBER 7 STA 978+71.62 TO STA. 1032+57.37 FEDERAL AID PROJECT CONTRACT 97447

Main table with columns for PT, LOCATION STATION / OFFSET, INLET SPECIAL (NO. 1-4), INLET TYPE A (TY 3 F&G, TY 8 F&G, TY 24 F&G), INLET TYPE B (TY 3 F&G, TY 23 F&G, TY 24 F&G, TY 1 F&CL), MANHOLE TYPE A (4", 5"), PRECAST FLARED END SECTIONS (18", 24", 30", 42", 15"), and RELOCATED STEEL END SECTION. Includes a subtotal row at the bottom.

- (1) EXISTING 15" CMP FES TO BE RELOCATED FROM STATION 982+96.09 20.85' RT (SEE DRAINAGE REMOVAL SCHEDULE).
(2) EXISTING 15" CMP FES TO BE RELOCATED FROM STATION 984+37.03 22.50' RT (SEE DRAINAGE REMOVAL SCHEDULE).

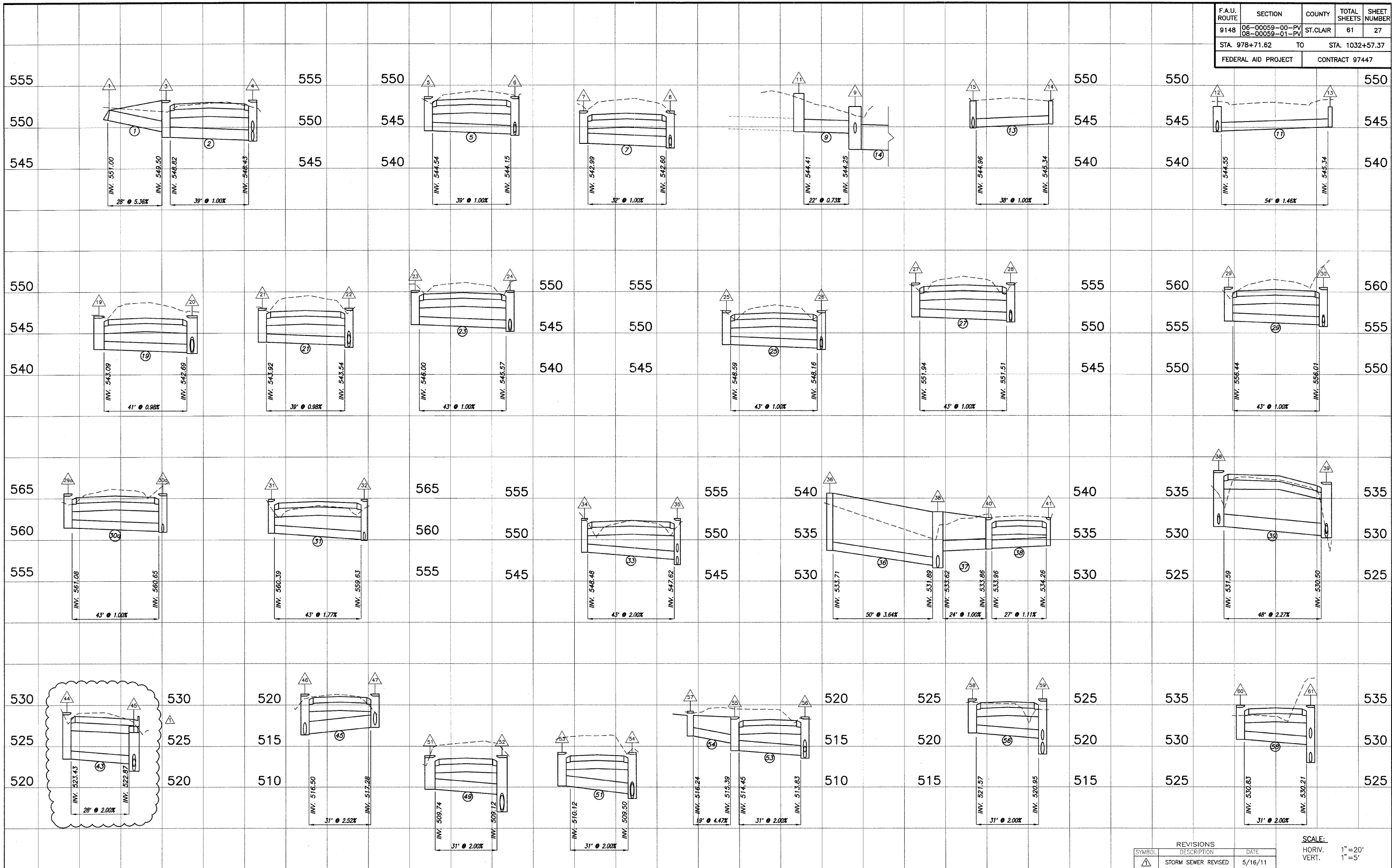
REVISIONS table with columns: SYMBOL, DESCRIPTION, DATE. Includes one revision: STATIONS, OFFSETS, QUANT. REVISED, 5/16/11

F.A.U. ROUTE	SECTION	COUNTY	TOTAL SHEETS	SHEET NUMBER
9148	06-00059-00-PV 08-00059-01-PV	ST. CLAIR	61	20
STA. 1004+50.00		TO STA. 1010+00.00		
FEDERAL AID PROJECT			CONTRACT 97447	



ROADWAY PLAN AND PROFILE MILBURN SCHOOL ROAD IMPROVEMENTS
ST. CLAIR COUNTY, ILLINOIS

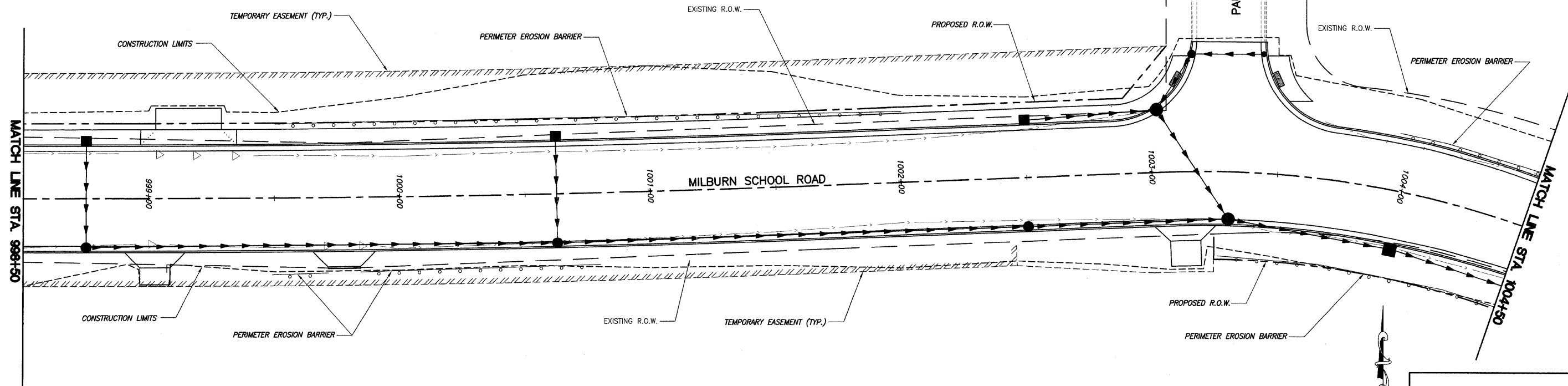
F.A.U. ROUTE	SECTION	COUNTY	TOTAL SHEETS	SHEET NUMBER
9148	06-00059-00-PV 08-00059-01-PV	ST. CLAIR	61	27
STA. 978+71.62		TO	STA. 1032+57.37	
FEDERAL AID PROJECT		CONTRACT 97447		



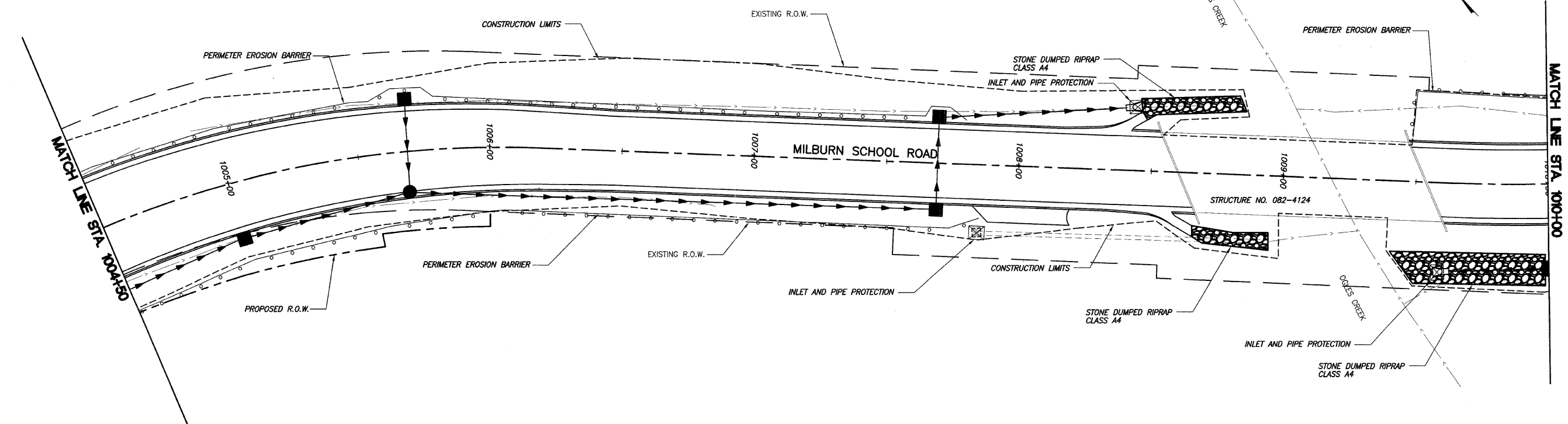
REVISIONS		
SYMBOL	DESCRIPTION	DATE
△	STORM SEWER REVISED	5/16/11

SCALE:
 HORIV. 1" = 20'
 VERT. 1" = 5'

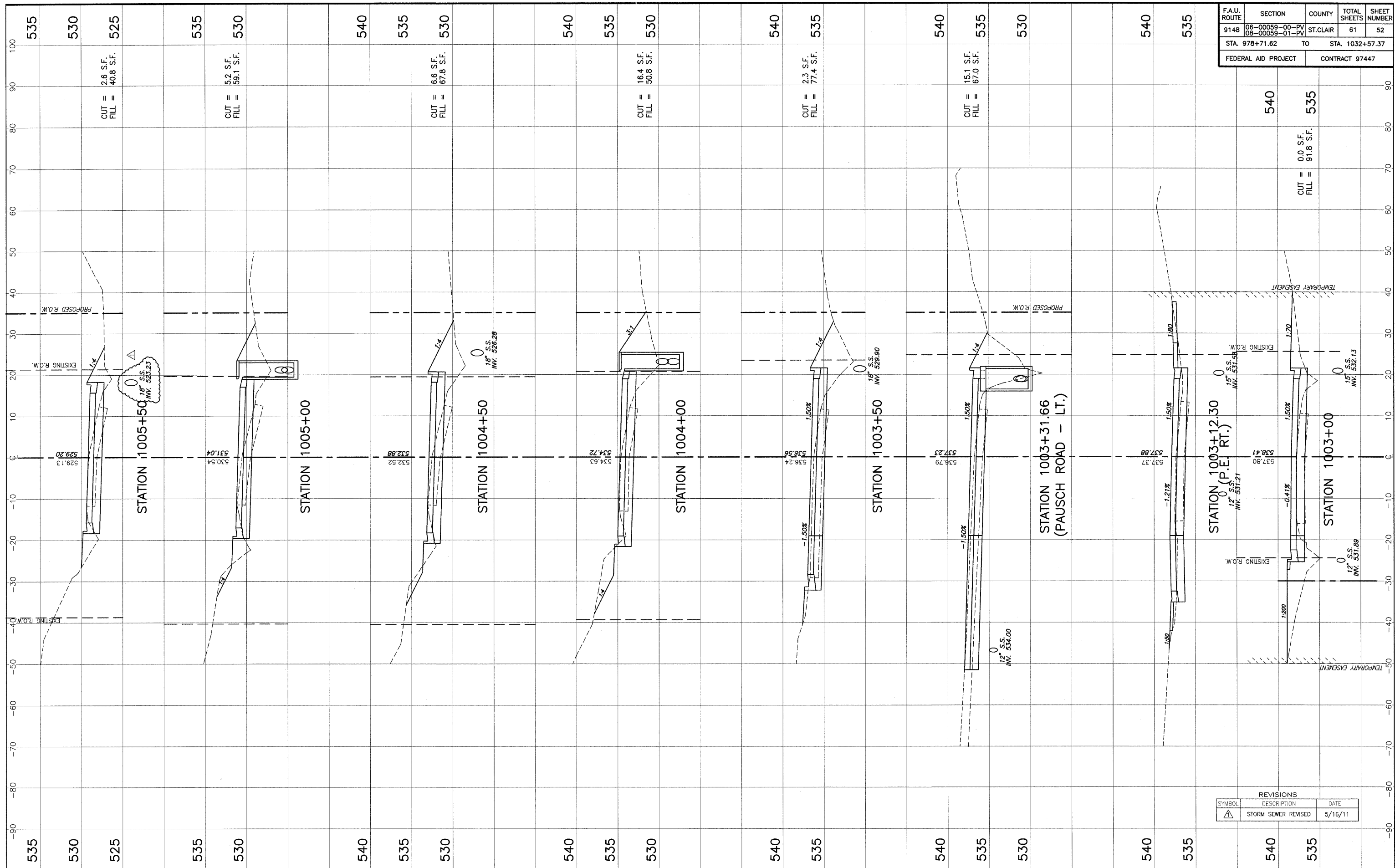
F.A.U. ROUTE	SECTION	COUNTY	TOTAL SHEETS	SHEET NUMBER
9148	08-00059-00-PV 08-00059-01-PV	ST. CLAIR	61	40
STA. 998+50.00		TO	STA. 1010+00.00	
FEDERAL AID PROJECT			CONTRACT 97447	



SCALE:
PLAN: 1" = 20'



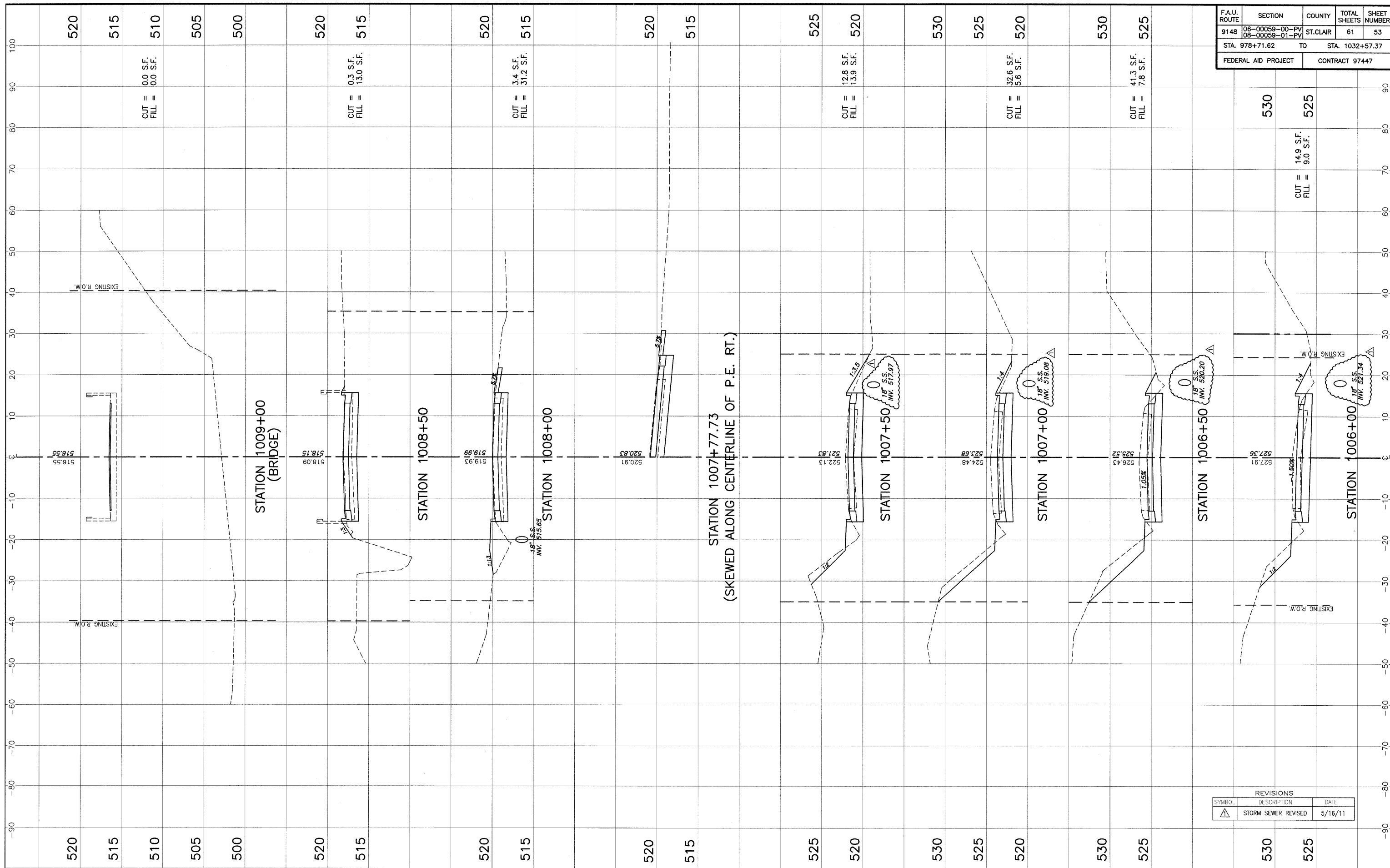
F.A.U. ROUTE	SECTION	COUNTY	TOTAL SHEETS	SHEET NUMBER
9148	06-00059-00-PV 08-00059-01-PV	ST. CLAIR	61	52
STA. 978+71.62		TO STA. 1032+57.37		
FEDERAL AID PROJECT		CONTRACT 97447		



REVISIONS		
SYMBOL	DESCRIPTION	DATE
△	STORM SEWER REVISED	5/16/11

STA. 1003+00 - STA. 1005+50 CROSS SECTIONS MILBURN SCHOOL ROAD IMPROVEMENTS ST. CLAIR COUNTY, ILLINOIS

F.A.U. ROUTE	SECTION	COUNTY	TOTAL SHEETS	SHEET NUMBER
9148	06-00059-00-PV 08-00059-01-PV	ST. CLAIR	61	53
STA. 978+71.62		TO	STA. 1032+57.37	
FEDERAL AID PROJECT		CONTRACT 97447		



REVISIONS		
SYMBOL	DESCRIPTION	DATE
△	STORM SEWER REVISED	5/16/11

STA. 1006+00 - STA. 1009+00 CROSS SECTIONS MILBURN SCHOOL ROAD IMPROVEMENTS ST. CLAIR COUNTY, ILLINOIS