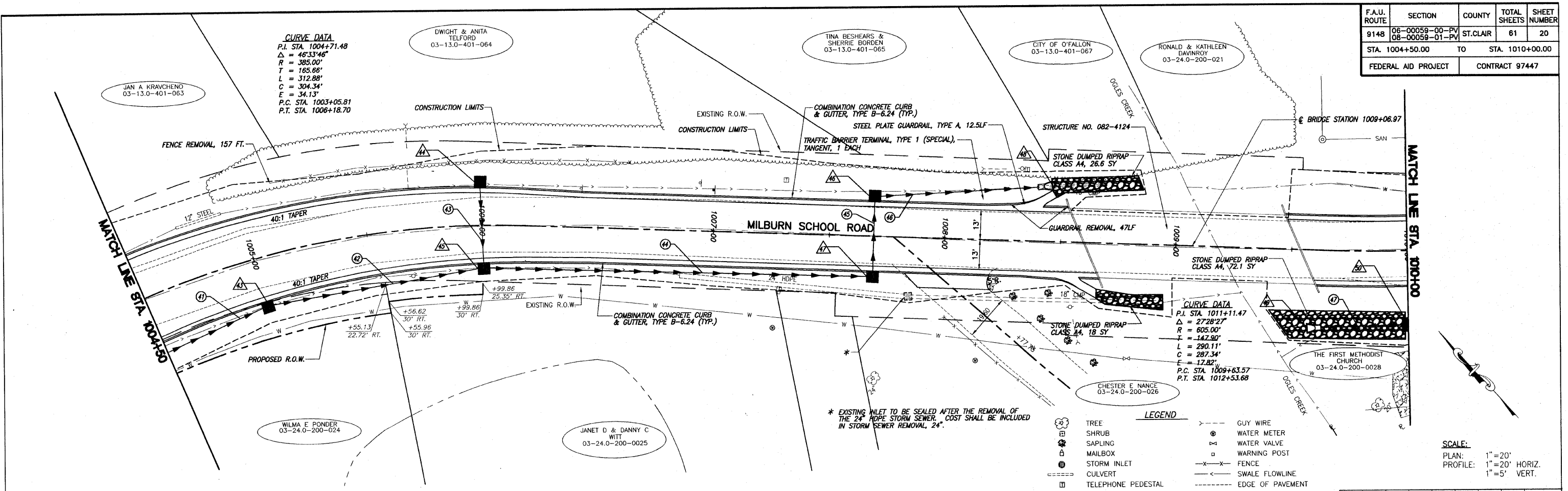


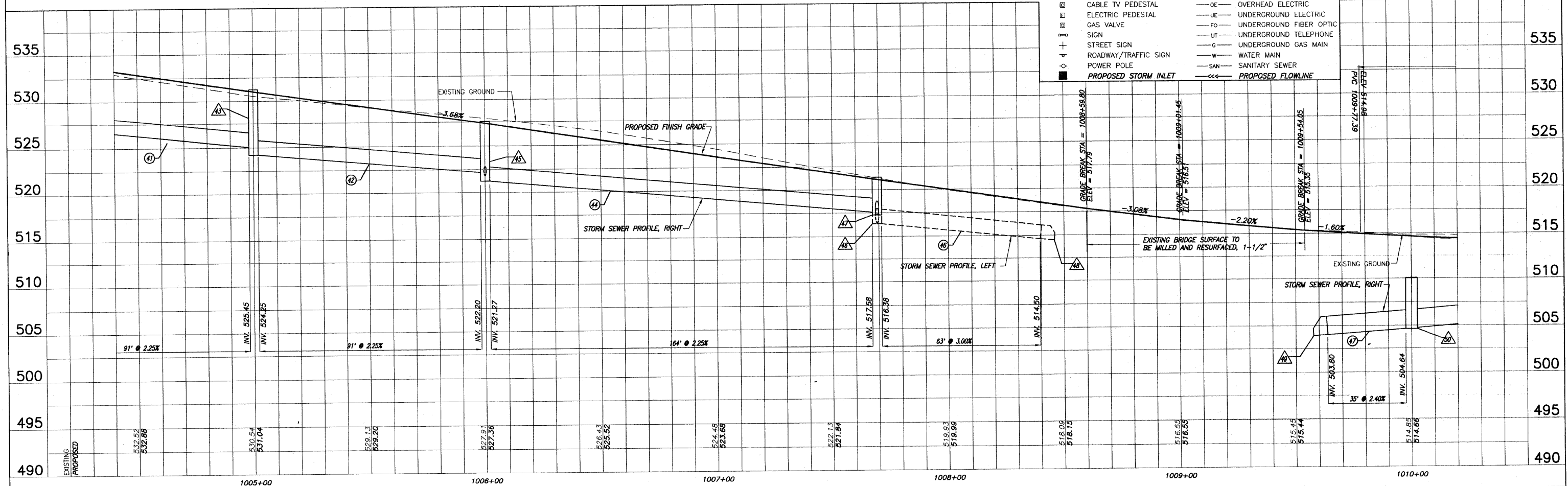
F.A.U. ROUTE	SECTION	COUNTY	TOTAL SHEETS	SHEET NUMBER
9148	06-00059-00-PV 08-00059-01-PV	ST. CLAIR	61	20
STA. 1004+50.00		TO		STA. 1010+00.00
FEDERAL AID PROJECT			CONTRACT 97447	



CURVE DATA
P.I. STA. 1011+11.47
 $\Delta = 27^{\circ}28'27''$
 $R = 605.00'$
 $L = 147.90'$
 $C = 287.34'$
 $E = 17.82'$
P.C. STA. 1009+63.57
P.T. STA. 1012+53.68

- LEGEND**
- TREE
 - SHRUB
 - SAPLING
 - MAILBOX
 - STORM INLET
 - CULVERT
 - TELEPHONE PEDESTAL
 - CABLE TV PEDESTAL
 - ELECTRIC PEDESTAL
 - GAS VALVE
 - SIGN
 - STREET SIGN
 - ROADWAY/TRAFFIC SIGN
 - POWER POLE
 - PROPOSED STORM INLET
 - GUY WIRE
 - WATER METER
 - WATER VALVE
 - WARNING POST
 - FENCE
 - SWALE FLOWLINE
 - EDGE OF PAVEMENT
 - OVERHEAD ELECTRIC
 - UNDERGROUND ELECTRIC
 - UNDERGROUND FIBER OPTIC
 - UNDERGROUND TELEPHONE
 - UNDERGROUND GAS MAIN
 - WATER MAIN
 - SANITARY SEWER
 - PROPOSED FLOWLINE

SCALE:
PLAN: 1" = 20'
PROFILE: 1" = 20' HORIZ.
1" = 5' VERT.



ROADWAY PLAN AND PROFILE MILBURN SCHOOL ROAD IMPROVEMENTS ST. CLAIR COUNTY, ILLINOIS

K:\40008 - O'Fallon - Milburn School Road - Phase 2.dwg, 10/29/2010 11:28:34 AM, Plotted by M.A.L.