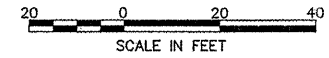
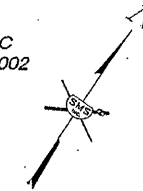


MANN'S LARRY  
23-1-08-04-01-101-003

CONTRACT NO. 97456



P/L LONG, ROBERT C  
19-1-08-04-01-101-002



REVISIONS

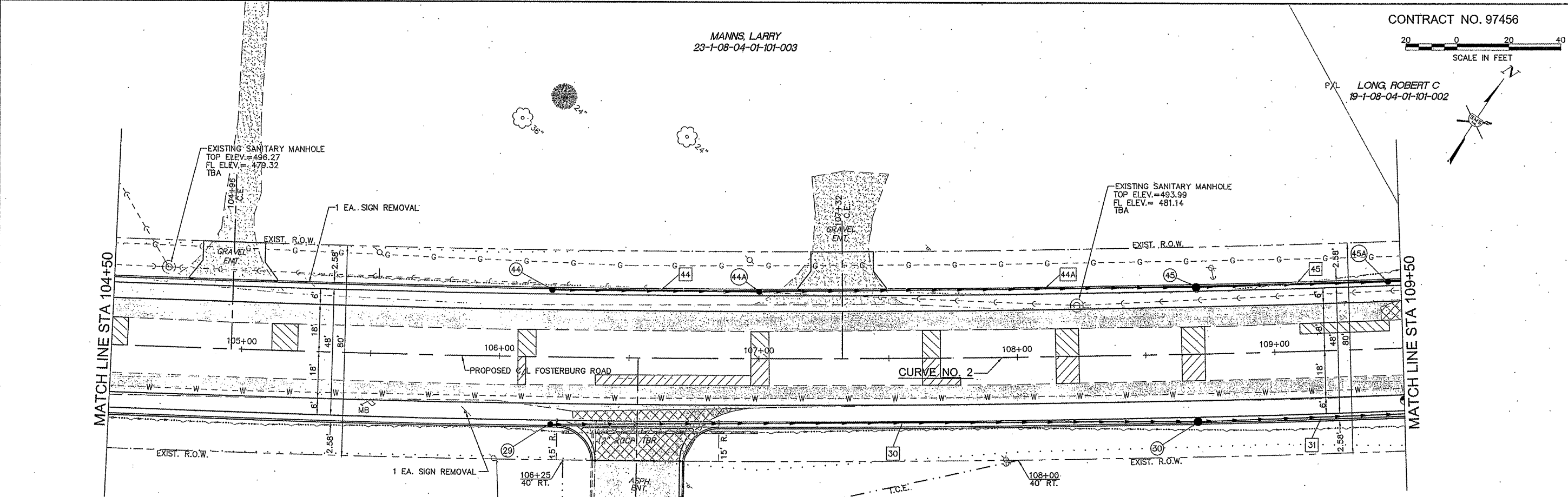
Sheppard, Morgan & Schwaab, Inc.  
CONSULTING ENGINEERS AND LAND SURVEYORS



215 Market Street, P.O. Box E, Alton, IL 62002 618462-9755 E-mail: mail@smsengineers.com  
10 Central Industrial Drive, Granite City, IL 62040 618877-9700 E-mail: mail@smsengineers.com  
DESIGN FIRM # 184-000992

CITY OF ALTON, ILLINOIS  
SECTION 05-00218-01-WR  
FOSTERBURG ROAD - PHASE 2  
PLAN AND PROFILE

DWG. NO. FBR PHS 2-PP4.dwg  
REF. BK. PG.  
JOB NO. 206612  
DES. BY: DEG  
DWN. BY: CDP  
CHK. BY: DEG  
DATE: JAN, 2011  
SCALE: 1" = 20' H.  
1" = 5' V.  
SHEET 11 OF 55



**CENTERLINE CURVE DATA**

**CURVE NO. 2**  
P.I. STA.=107+14.28  
Δ=10°22'15"  
D=00°50'26"  
T=618.67  
R=6817.14'  
L=1233.95  
E=28.01'  
P.C. STA.=100+94.61  
P.T. STA.=113+28.56  
SUPER ELEV.=NONE

DEPT OF MENTAL HEALTH STATE OF ILLINOIS  
23-1-08-04-00-000-005

DEPT OF MENTAL HEALTH STATE OF ILLINOIS  
23-1-08-04-00-000-006

**DRAINAGE STRUCTURES**

- (29) INLET TY. A-3V (SPECIAL)  
STA. 106+20, 25.54' RT.  
T.C. = 496.30  
12" N.E. F.L. = 493.30
- (30) INLET TY. B-3V (SPECIAL)  
STA. 108+70, 25.54' RT.  
T.C. = 494.49  
12" S.W. F.L. = 490.49  
12" N.E. F.L. = 490.39
- (44A) INLET TY. B-3V (SPECIAL)  
STA. 107+00, 25.54' RT.  
T.C. = 495.79  
12" S.W. F.L. = 492.50  
12" N.E. F.L. = 492.40
- (44) INLET TY. A-3V (SPECIAL)  
STA. 106+20, 25.54' LT.  
T.C. = 496.30  
12" N.E. F.L. = 493.30
- (45) INLET TY. B-3V (SPECIAL)  
STA. 108+70, 25.54' LT.  
T.C. = 494.49  
12" S.W. F.L. = 490.71  
12" N.E. F.L. = 490.61
- (45A) INLET TY. B-3V (SPECIAL)  
STA. 109+45, 25.54' LT.  
T.C. = 494.00  
12" S.W. F.L. = 489.86  
12" N.E. F.L. = 489.76

**STORM SEWERS**

- (30) (29) TO (30) 251 FT. 12" SSI @ 1.12%  
46.1 C.Y. T.B.
- (31) (30) TO (31) 153 FT. 12" SS2 @ 1.00%  
42.5 C.Y. T.B.
- (44) (44) TO (44A) 80 FT. 12" SSI @ 1.00%  
11.4 C.Y. T.B.
- (44A) (44A) TO (45) 169 FT. 12" SSI @ 1.00%  
32.8 C.Y. T.B.
- (45) (45) TO (45A) 75 FT. 12" SSI @ 1.00%  
17.7 C.Y. T.B.

