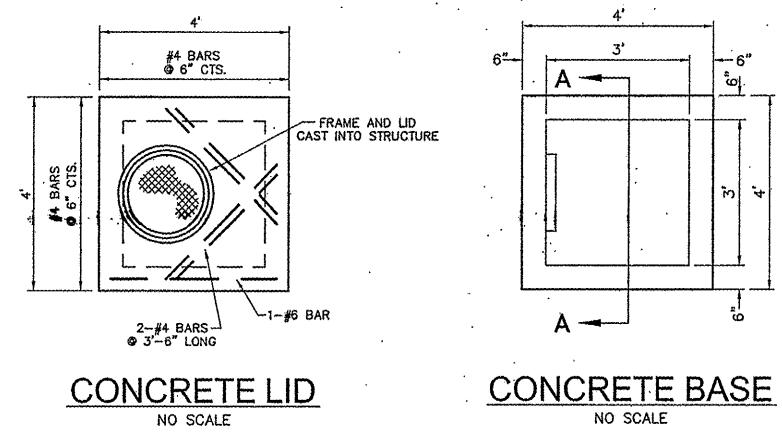
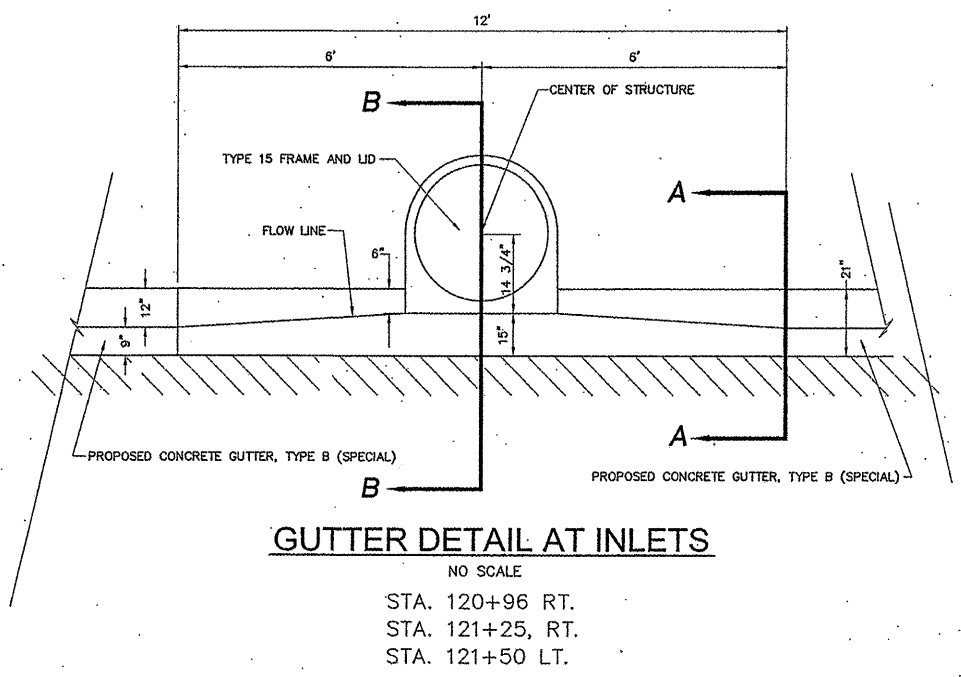


STA. 92+29.5, LT. & RT.  
STA. 99+83.34, LT. & RT.

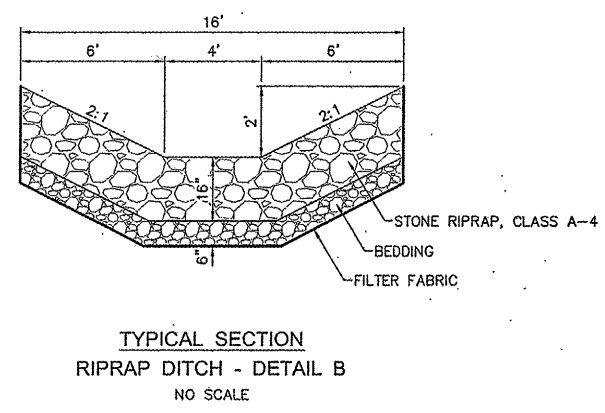
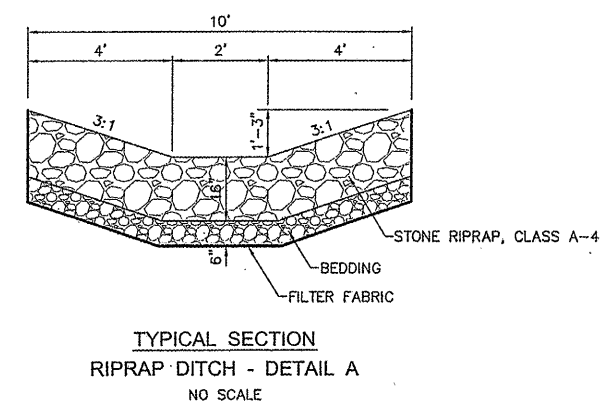


**DETAIL - INLETS, SPECIAL, NO. 2**  
NO SCALE

④0 STA. 110+22, 36.50' RT.  
④1 STA. 111+00, 36.50' RT.  
③3 STA. 111+69.01, 36.50' RT.



NOTE: CONCRETE GUTTER AT INLETS SHALL BE PAID FOR AS CONCRETE GUTTER, TYPE B (SPECIAL) OR CONCRETE GUTTER TRANSITION AS SHOWN ON THE PLANS.



**CROSS ROAD CULVERT SCHEDULE**

LOCATION	UPSTREAM			DOWNSTREAM			SIZE	LENGTH	SLOPE	COMMENTS	EXISTING MATERIAL
	STATION	OFFSET	ELEVATION	STATION	OFFSET	ELEVATION					
FOSTERBURG ROAD	92+29.5	20.0' LT.	489.89	92+28	31.0' RT.	484.51	15"	52'	10.35%	TO REMAIN/PARTIAL REMOVAL	CONCRETE ENCASED V.C.P.
FOSTERBURG ROAD	99+83.34	25.5' RT.	491.85	99+83.5	23.5' LT.	491.60	15"	49'	0.51%	TO REMAIN	CONCRETE ENCASED V.C.P.
FOSTERBURG ROAD	110+22.5	25.0' RT.	486.64	110+22.5	31.0' LT.	484.34	18"	56'	4.11%	TO REMAIN/PARTIAL REMOVAL	CONCRETE ENCASED V.C.P.
FOSTERBURG ROAD	119+93.5	40.0' RT.	489.42	119+82	36.0' RT.	485.46	15"	75'	5.28%	TO REMAIN	CONCRETE ENCASED V.C.P.

REVISIONS


**SMS ENGINEERS**  
Sheppard, Morgan & Schwaab, Inc.  
CONSULTING ENGINEERS AND LAND SURVEYORS  
215 Market Street, P.O. Box E, Alton, IL 62002 618-462-9755 E-mail: mail@smsengineers.com  
10 Central Industrial Drive, Granite City, IL 62040 618-877-9700 E-mail: mail@smsengineers.com  
DESIGN FIRM # 184-000992

CITY OF ALTON, ILLINOIS  
SECTION 05-00218-01-WR  
FOSTERBURG ROAD - PHASE 2  
CONSTRUCTION DETAILS

DWG. NO.  
FBR PHIS 2-DETAILS DRAINAGE DWG  
REF. BK. PG.  
JOB NO. 206812  
DSN. BY: DEG  
DWN. BY: IMM  
CHK. BY: DEG  
DATE: SEPT, 2010  
SCALE: 1" = 5' H.  
SCALE: 1" = 2' V.  
SHEET 24 OF 55