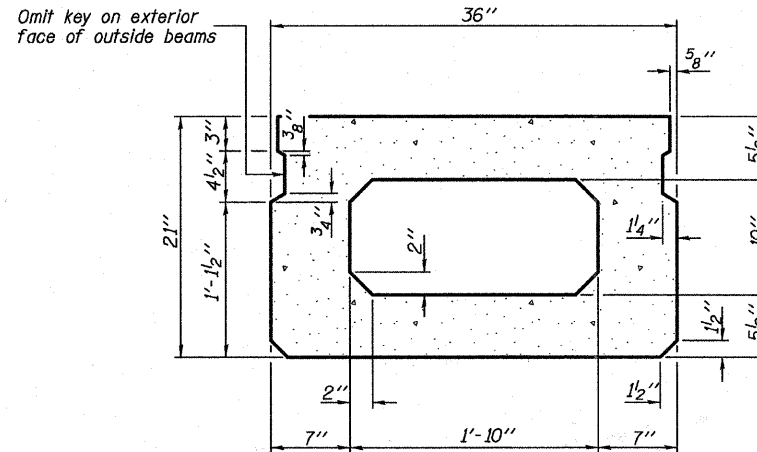
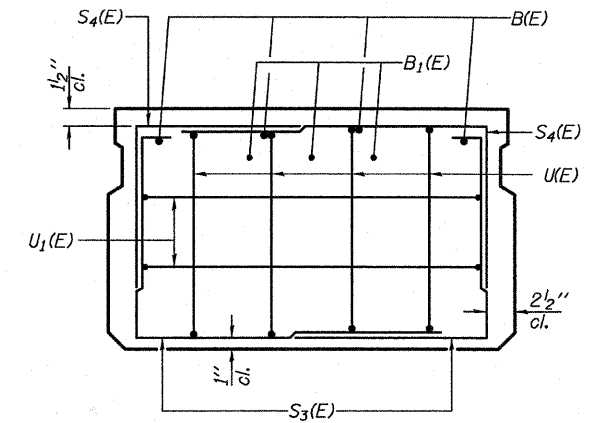


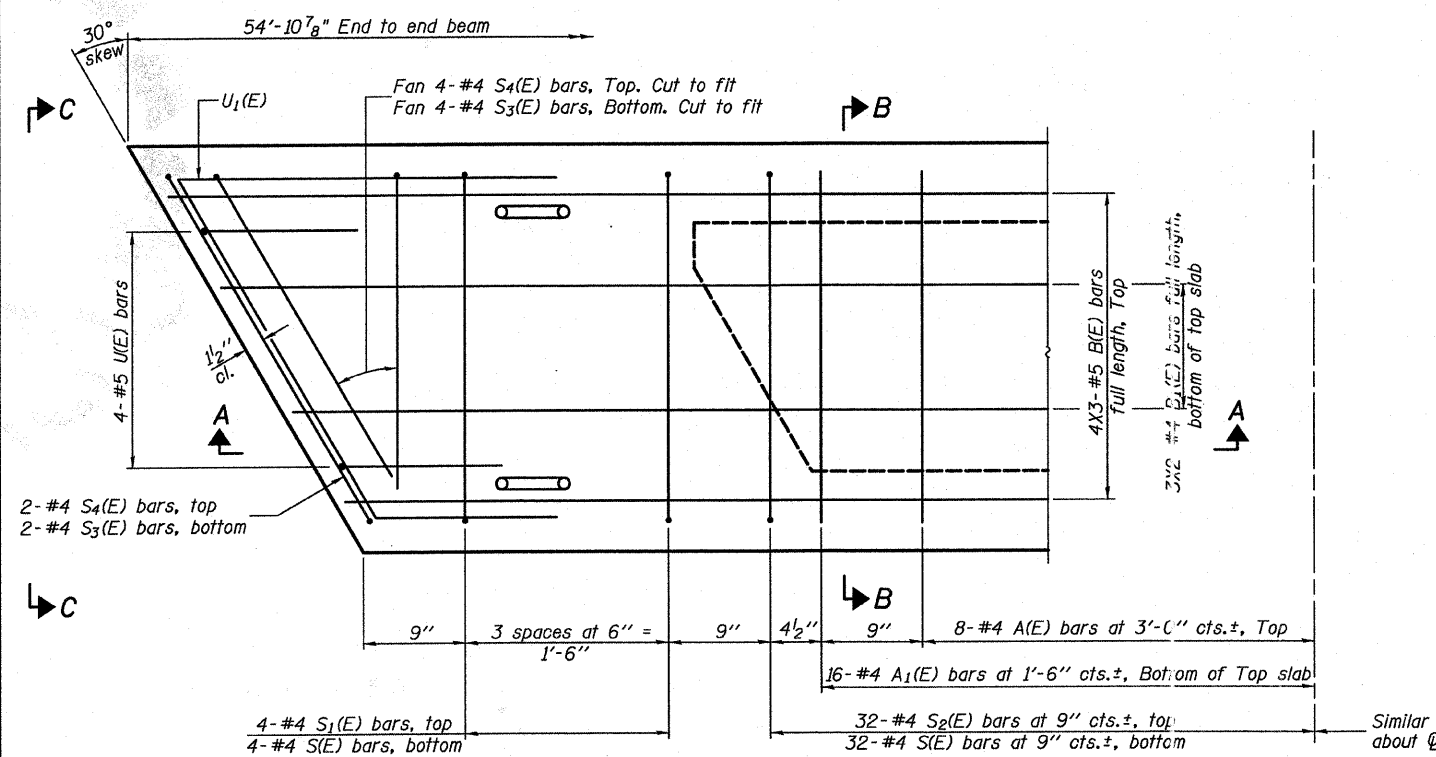
SECTION A-A



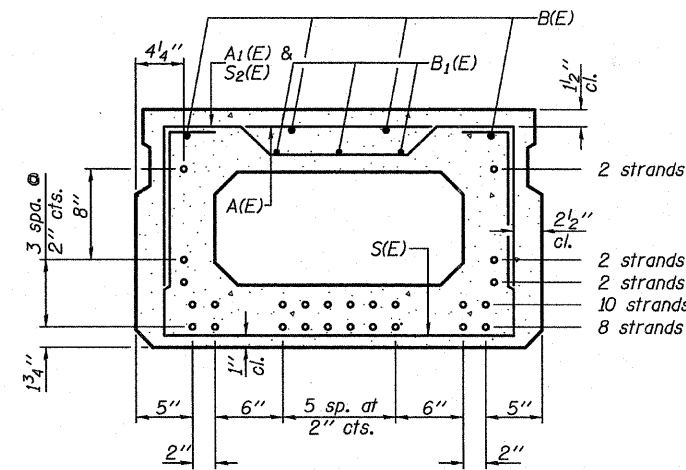
SECTION B-B
(Showing dimensions)



VIEW C-C



PLAN VIEW



SECTION B-B
(Showing reinforcement and permissible strand locations)
24-1/2" Strands
(8 Strands 13 3/4" Up, 10 Strands 3 3/4" Up,
2 Strands 5 3/4" Up, 2 Strands 7 3/4" Up,
2 Strands 15 3/4" Up)

Note: Place the number of strands specified in each row symmetrically about the centerline of beam in the permissible strand locations shown.

BAR LIST
ONE BEAM ONLY
(For information only)

Bar	No.	Size	Length	Shape
A(E)	16	#4	2'-7"	—
A1(E)	32	#4	2'-10"	—
B(E)	12	#5	19'-11"	—
B1(E)	6	#4	28'-4"	—
S(E)	72	#4	6'-5"	□
S1(E)	8	#4	4'-11"	□
S2(E)	64	#4	5'-2"	□
S3(E)	12	#4	4'-11"	□
S4(E)	12	#4	4'-2"	□
U(E)	8	#5	4'-0"	□
U1(E)	4	#4	7'-2"	□

Note: See sheet 5 of 10 for additional details and Bill of Material.

MINIMUM BAR LAP

#4 bar = 2'-0"
#5 bar = 2'-6"

Note: Spacing of S(E) and S2(E) bars may be adjusted up to 4" in the immediate area of the transverse tie diaphragms to miss the block outs for the transverse ties.

PD-2136-R

7-1-10

FILE NAME = h:\6466\B144857-04-beam.dgn	USER NAME = _USERDESCR_	DESIGNED - K.M.M.	REVISIONS -	STATE OF ILLINOIS DEPARTMENT OF TRANSPORTATION	21" X 36" PPC DECK BEAM SPAN 2	T.R.	SECTION	COUNTY	TOTAL SHEETS	SHEET NO.	
PLOT SCALE = 4:0.0000 ' / IN.	DRAWN - K.H.L.L.	CHECKED - L.D.G.	REVISIONS -			212	10-10117-00-BR	CLINTON	16	7	
PLOT DATE = 3/29/2011	CHECKED - B.G.H.	REVISIONS -	REVISIONS -			S.N. 014-4057		CONTRACT NO.		ILLINOIS FED. AID PROJECT	
SHEET NO. 4 OF 10 SHEETS											