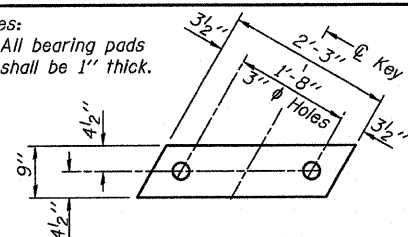
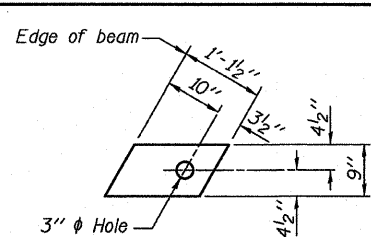


Notes:
All bearing pads shall be 1" thick.

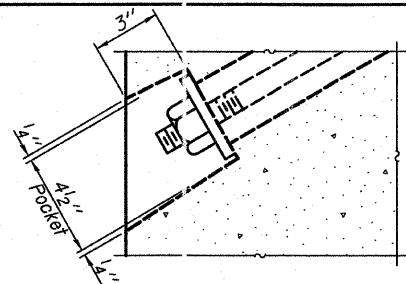


FABRIC BEARING PAD
(Interior)

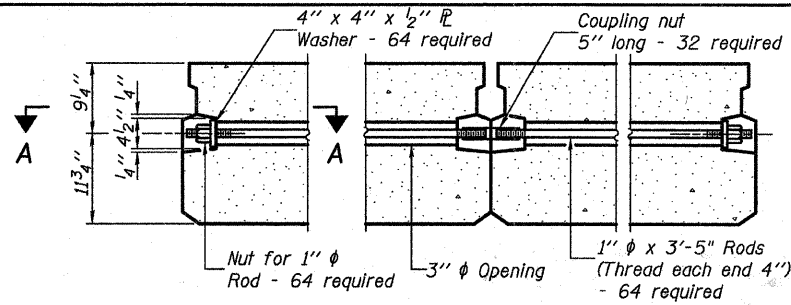


FABRIC BEARING PAD
(Exterior)

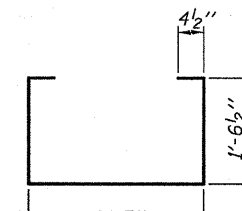
FIXED



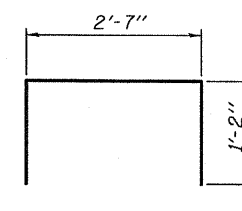
SECTION A-A



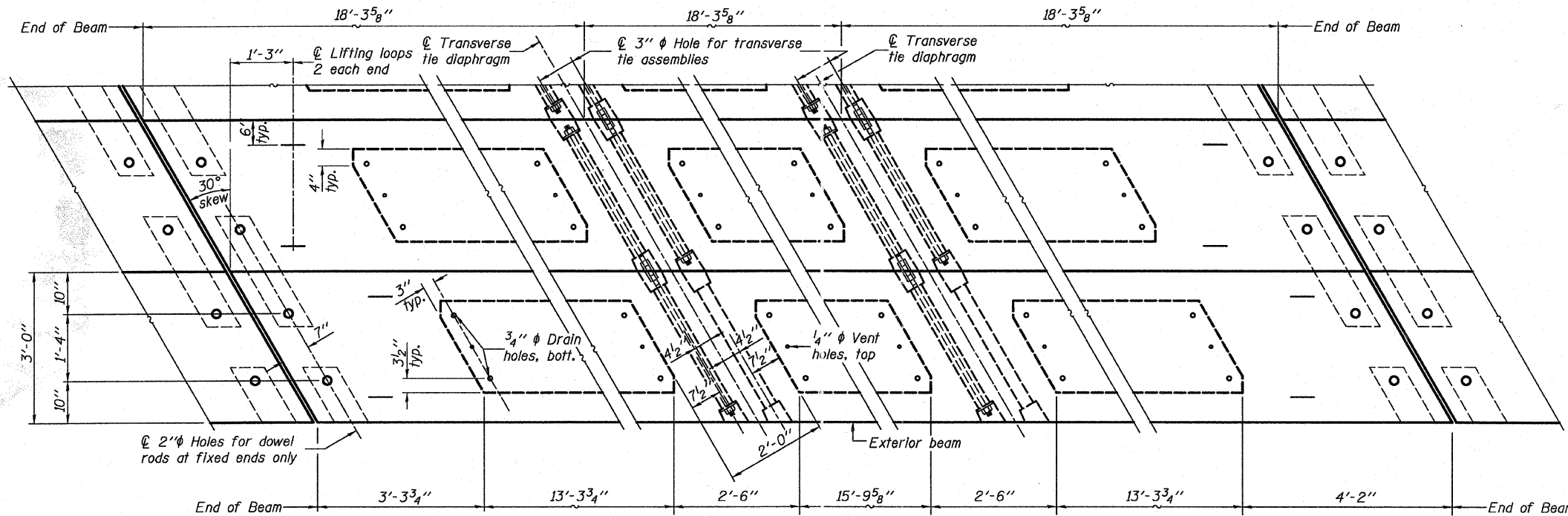
TYPICAL TRANSVERSE TIE ASSEMBLY



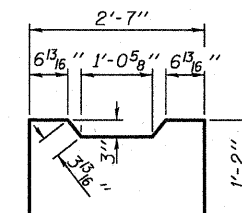
BAR S(E)



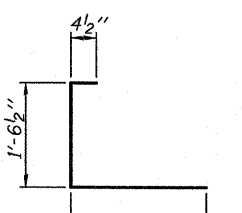
BAR S1(E)



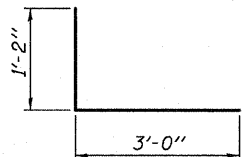
PLAN VIEW - SPAN 2



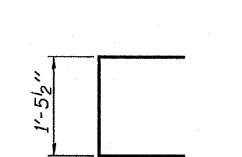
BAR S2(E)



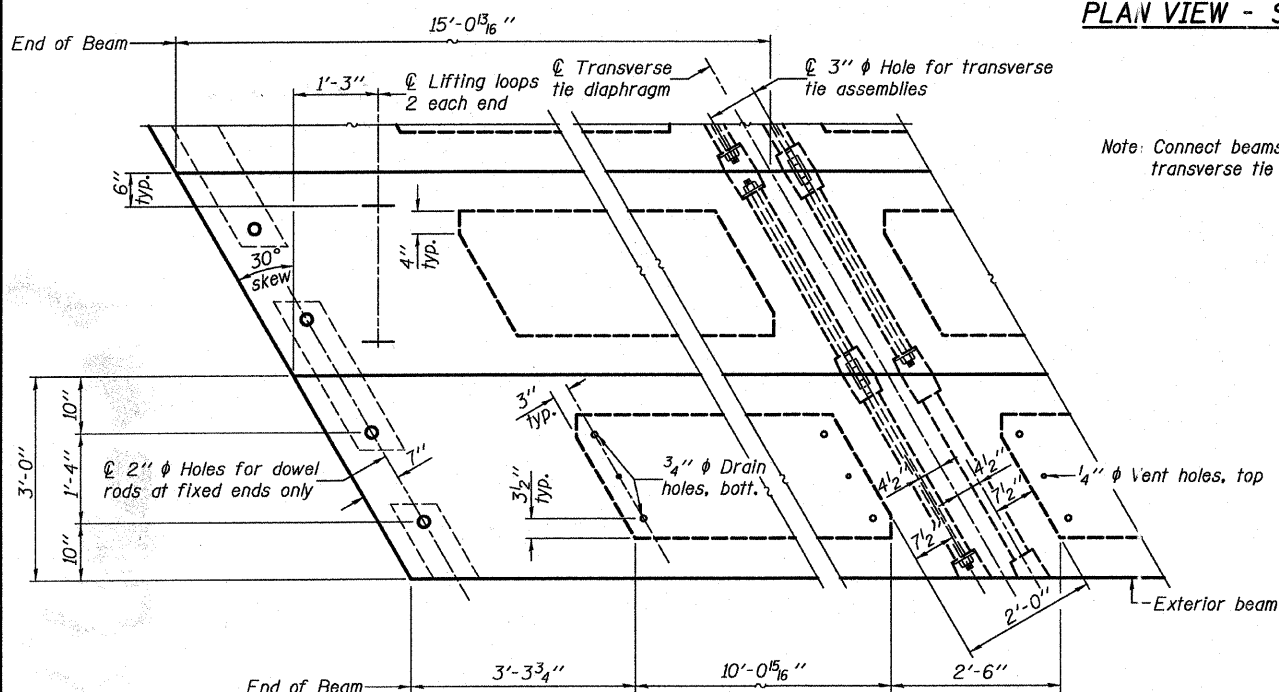
BAR S3(E)



BAR S4(E)

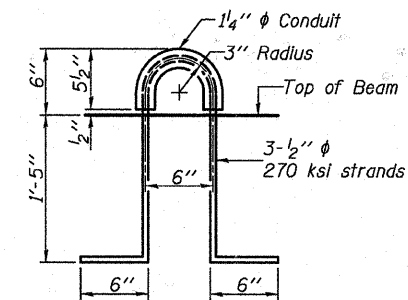


BAR U(E)



PLAN VIEW - SPANS 1 & 3

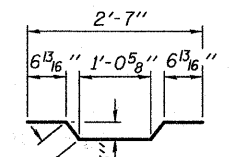
Note: Connect beams in pairs with the transverse tie configuration shown.



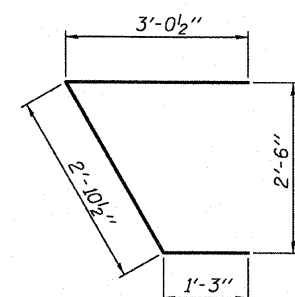
LIFTING LOOP DETAIL

NOTES

- Prestressing steel shall be uncoated high strength, low relaxation 7-wire strand, Grade 270. The nominal diameter shall be 1/2" and the nominal cross-sectional area shall be 0.153 sq. in.
- The 1" rods in the transverse tie assembly shall be tightened to a snug fit and the threads set. Pockets on exterior faces of bridge shall be filled with grout after transverse tie assembly is in place.
- Reinforcement bars shall conform to ASTM A 706, Grade 60. (See Special Provisions).
- Two 3/8" fabric adjusting shims of the dimensions of the exterior bearing pad shall be provided for each bearing pad location.
- A minimum 2 1/2" lifting pin shall be used to engage the lifting loops during handling.
- Corrosion Inhibitor, per Article 1020.05(b)(12) and 1021.06 of the Standard Specifications, shall be used in the concrete for precast prestressed concrete deck beams.
- Compressive strength of prestressed concrete, f'c, shall be 6000 psi.
- Compressive strength of prestressed concrete at release, f'cl, shall be 5000 psi.



BAR A1(E)



BAR U1(E)

BILL OF MATERIAL

Precast Prestressed Conc. Deck Bms. (21" depth)	Sq. Ft.	3,115
---	---------	-------

PD-2136-RD

7-1-10

FILE NAME =
h:\6466\0144057-05-bmdt.dgn

USER NAME = _USERDESCR.
PLOT SCALE = 4:8.0000 1' = IN.
PLOT DATE = 3/29/2011

DESIGNED - K.M.M.
CHECKED - L.D.G.
DRAWN - K.H.L.L.
CHECKED - B.G.H.

REVISED -
REVISED -
REVISED -
REVISED -

STATE OF ILLINOIS
DEPARTMENT OF TRANSPORTATION

21" x 36" PPC DECK BEAM DETAILS

SHEET NO. 5 OF 10 SHEETS

T.R.	SECTION	COUNTY	TOTAL SHEETS	SHEET NO.
212	10-10117-00-BR	CLINTON	16	8
S.N. 014-4057		CONTRACT NO.		
ILLINOIS FED. AID PROJECT				