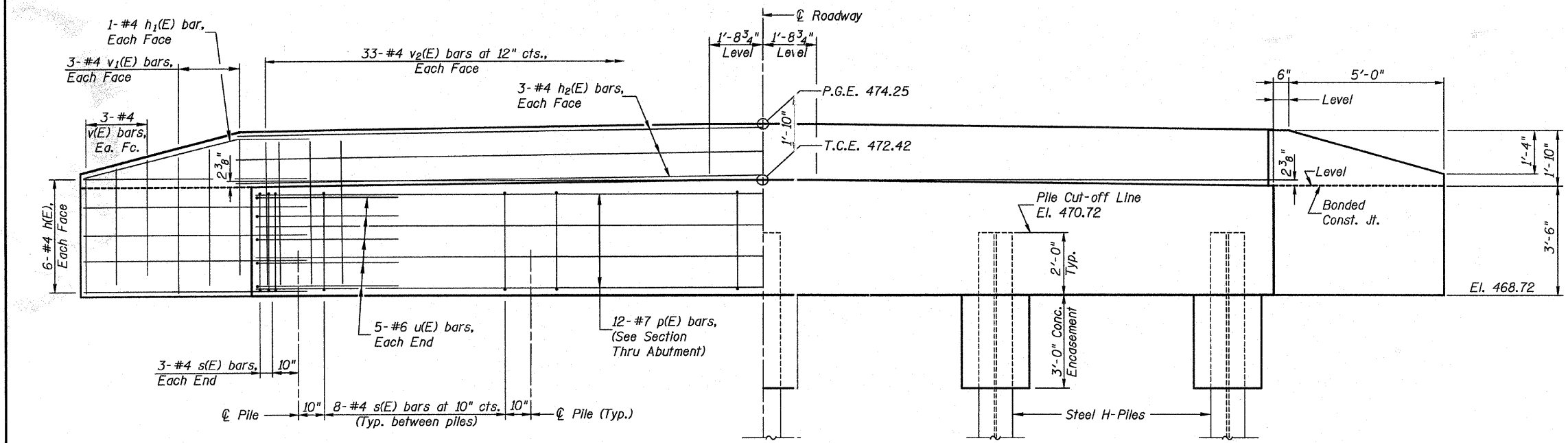
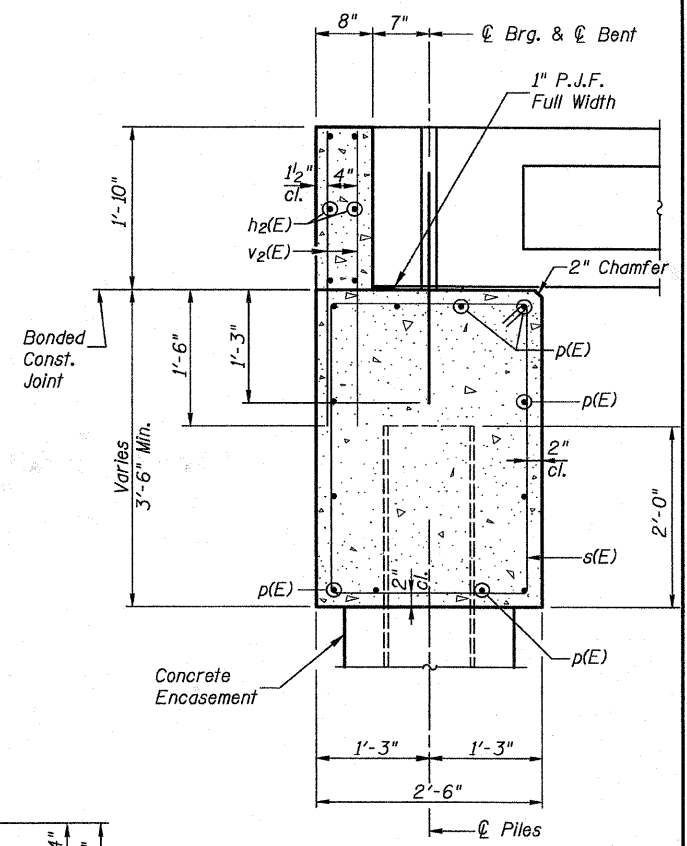


PLAN



ELEVATION

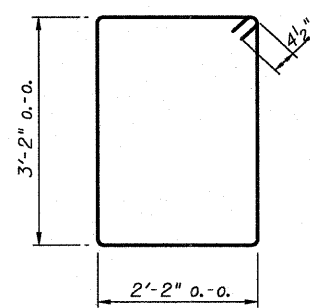


SECTION THRU ABUTMENT
(at Right Angles)

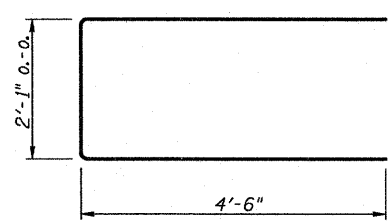
- NOTES**
- The Backwall and the portion of the Wingwalls above the bonded construction joint shall be cast against the in-place beam.
 - Space reinforcement in pile cap to miss dowel rods.

PILE DATA

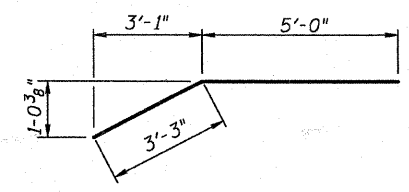
	S. ABUT.	N. ABUT.
Type:	Steel HP 10X42	Steel HP 10X42
Nominal Required Bearing:	335 k	335 k
Factored Resistance Available:	168 k	168 k
Est. Length:	32 ft.	31 ft.
No. Production Piles:	4	4
No. Test Piles:	1	1



BAR s(E)



BAR u(E)



BAR h1(E)

BILL OF MATERIAL FOR ONE ABUTMENT

Bar	No.	Size	Length	Shape
h(E)	24	#4	7'-11"	—
h1(E)	4	#4	8'-3"	—
h2(E)	6	#4	32'-8"	—
p(E)	12	#7	32'-8"	—
s(E)	38	#4	11'-5"	□
u(E)	10	#6	11'-1"	—
v(E)	12	#4	3'-0"	—
v1(E)	12	#4	4'-0"	—
v2(E)	66	#4	3'-2"	—
Concrete Structures			Cu. Yd.	14.4
Reinforcement Bars, Epoxy Coated			Pound	1,740
Concrete Encasement			Cu. Yd.	1.8