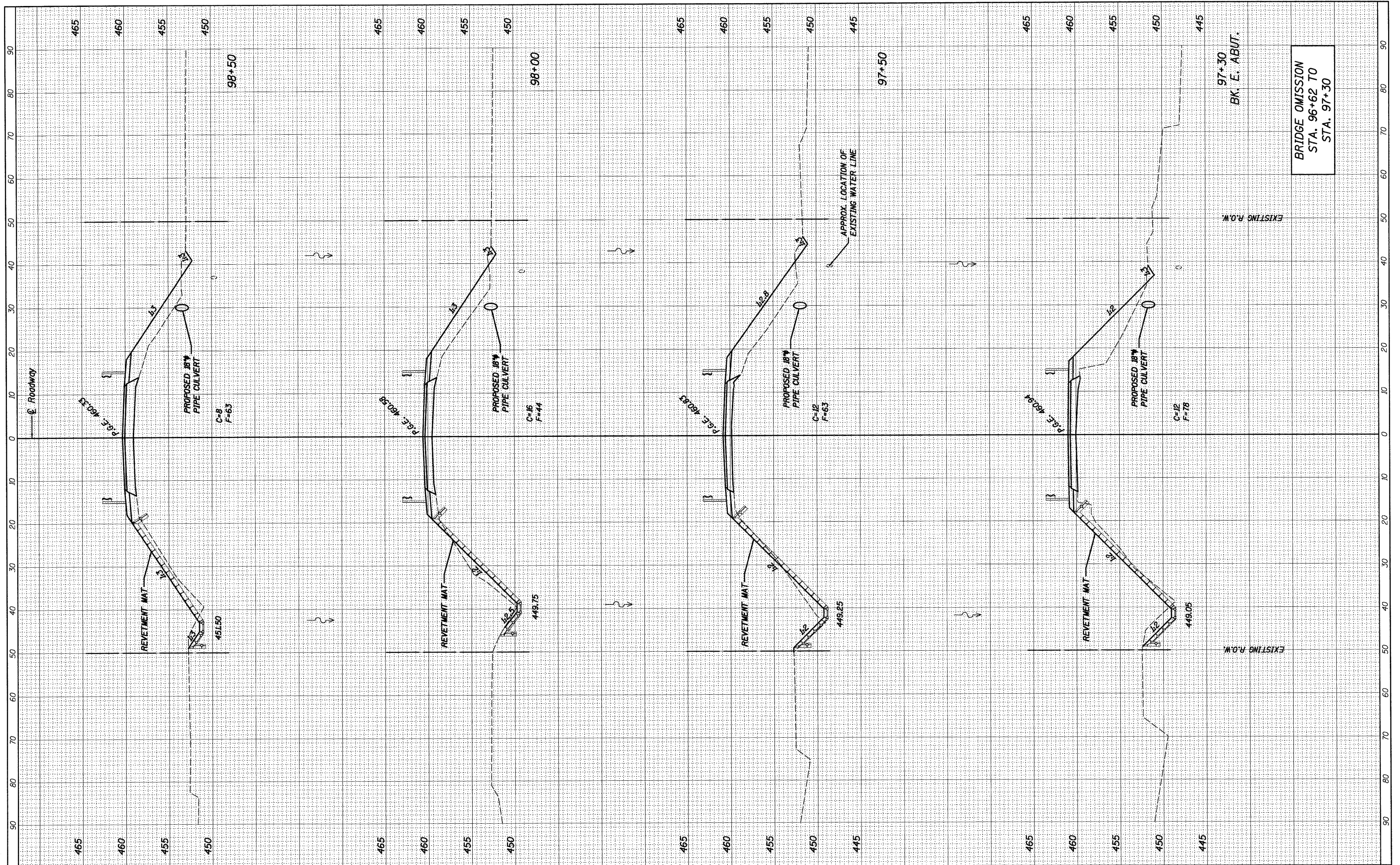


FINAL SURVEY	DATE
SURVEYED	BY
PLOTTED	
NOTE BOOK	
AREAS CHECKED	
NO.	

ORIGINAL SURVEY	DATE
SURVEYED	BY
PLOTTED	
NOTE BOOK	
AREAS CHECKED	
NO.	



BRIDGE OMISSION  
STA. 96+62 TO  
STA. 97+30

FILE NAME = h:\5789\5789\_X5sh\_5789.dgn  
USER NAME = USERDESCR\_

DESIGNED - B.I.B.  
DRAWN - K.H.L.  
CHECKED - L.D.G.  
DATE - 4/12/2011

REVISIONS:  
REVISED -  
REVISED -  
REVISED -  
REVISED -

STATE OF ILLINOIS  
DEPARTMENT OF TRANSPORTATION

CROSS SECTIONS  
EXISTING & PROPOSED ROADWAY  
SCALE: SHEET NO. 3 OF 5 SHEETS STA. 97+30 TO STA. 98+50

F.A.S. RTE.	SECTION	COUNTY	TOTAL SHEETS	SHEET NO.
782	07-00084-00-BR/07-00088-00-BR	BOND/CLINTON	19	17
S.N. 003-3052		CONTRACT NO. 97469		
ILLINOIS FED. AID PROJECT				

HMG INC. 5789