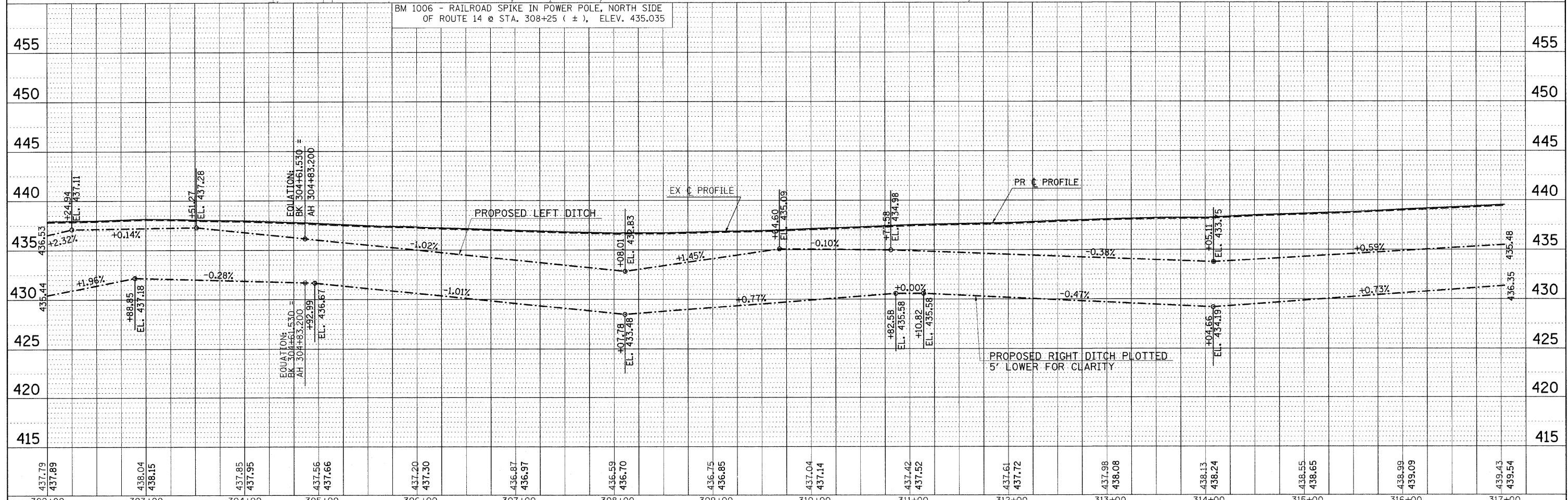
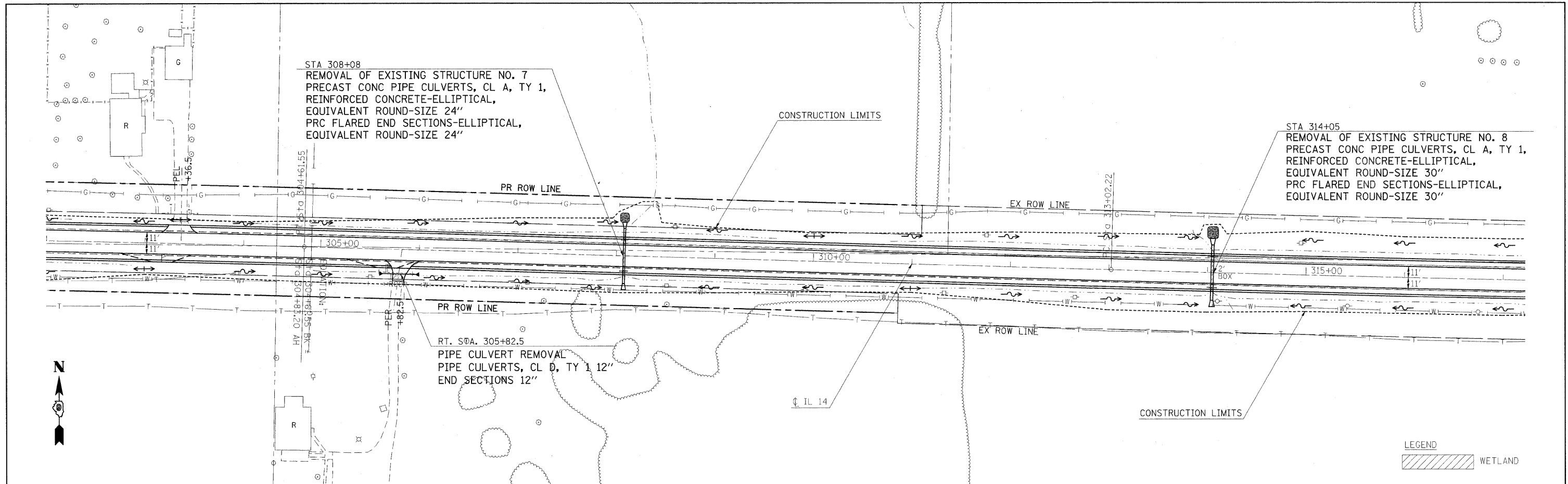


DATE	
BY	
REVIEWED	
PLANNED	
NOTED	
NO.	

DATE	
BY	
REVIEWED	
PLANNED	
NOTED	
NO.	



BM 1006 - RAILROAD SPIKE IN POWER POLE, NORTH SIDE OF ROUTE 14 @ STA. 308+25 (±), ELEV. 435.035

EQUATION:  
BK 304+61.530 =  
AH 304+83.200  
EL. 436.87

EQUATION:  
BK 304+61.530 =  
AH 304+83.200  
EL. 436.87

FILE NAME =	USER NAME = #USER#	DESIGNED -	REVISED -	<b>STATE OF ILLINOIS</b> <b>DEPARTMENT OF TRANSPORTATION</b>	<b>IL ROUTE 14 PLAN &amp; PROFILE SHEET</b>	F.A.P. RTE.	SECTION	COUNTY	TOTAL SHEETS	SHEET NO.	
#FILE#		DRAWN -	REVISED -			869	(1-1,1,3,6)R-1,RS-3,(1,3,6)B-2	•	299	37	
		CHECKED -	REVISED -			CONTRACT NO. 98797					
		DATE -	REVISED -			FED. ROAD DIST. NO. ILLINOIS FED. AID PROJECT					