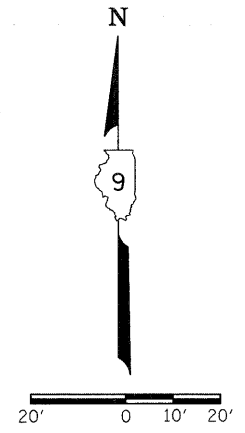
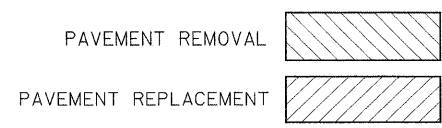
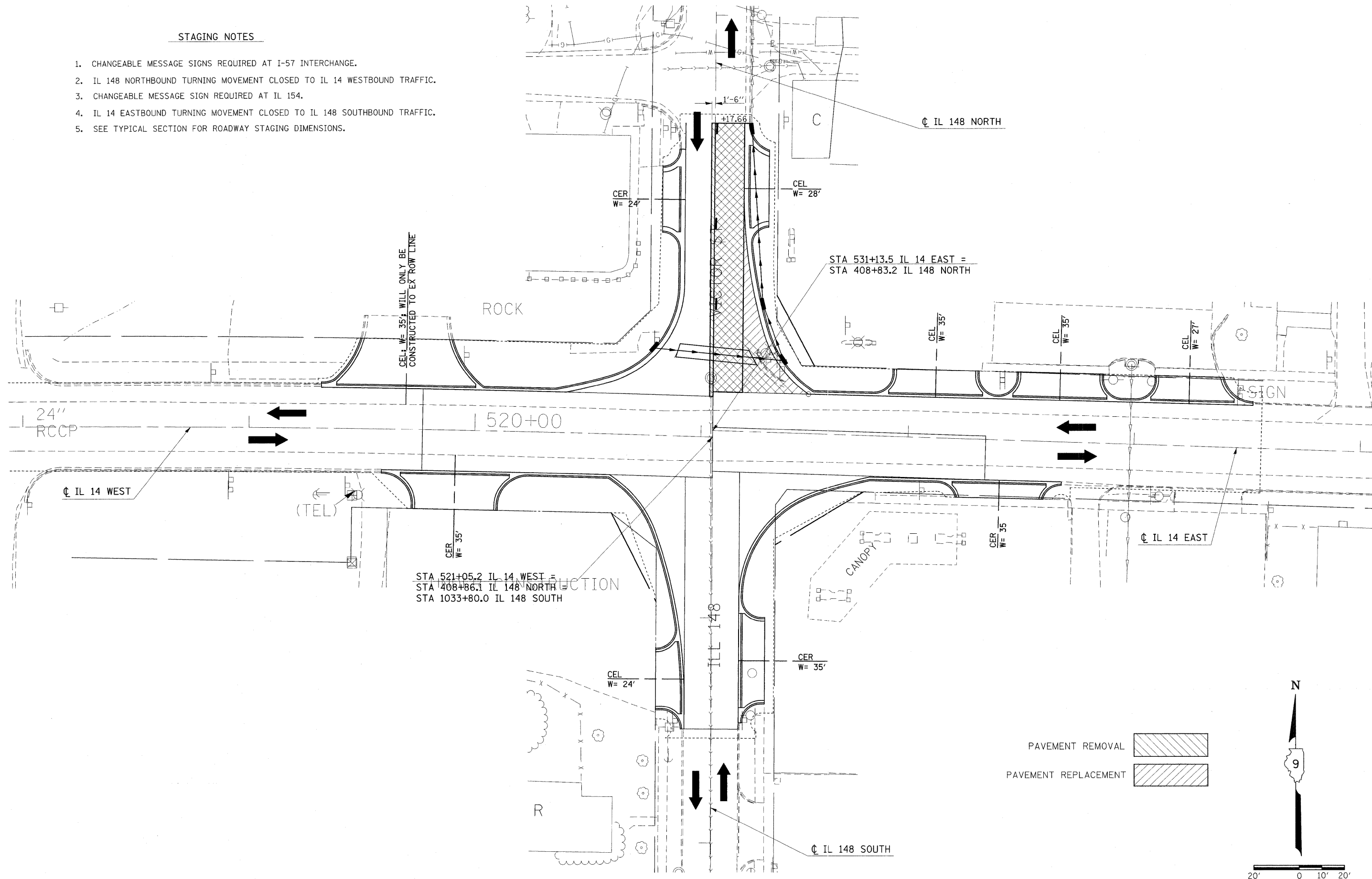


STAGING NOTES

1. CHANGEABLE MESSAGE SIGNS REQUIRED AT I-57 INTERCHANGE.
2. IL 148 NORTHBOUND TURNING MOVEMENT CLOSED TO IL 14 WESTBOUND TRAFFIC.
3. CHANGEABLE MESSAGE SIGN REQUIRED AT IL 154.
4. IL 14 EASTBOUND TURNING MOVEMENT CLOSED TO IL 148 SOUTHBOUND TRAFFIC.
5. SEE TYPICAL SECTION FOR ROADWAY STAGING DIMENSIONS.



FILE NAME =	USER NAME = #USER#	DESIGNED -	REVISED -	STATE OF ILLINOIS DEPARTMENT OF TRANSPORTATION	STAGE 7: IL 14 /IL 148 INTERSECTION			F.A.P. RTE.	SECTION	COUNTY	TOTAL SHEETS	SHEET NO.
#FILEL#	PLOT SCALE = #SCALE#	DRAWN -	REVISED -					869	(1-1,3,6)R-1,RS-3;(1,3,6)B-2	*	299	66
	PLOT DATE = #DATE#	CHECKED -	REVISED -		SCALE: 20			SHEET NO. OF SHEETS STA. TO STA.		* PERRY & FRANKLIN COUNTY CONTRACT NO. 98797		
		DATE -	REVISED -					ILLINOIS FED. AID PROJECT				