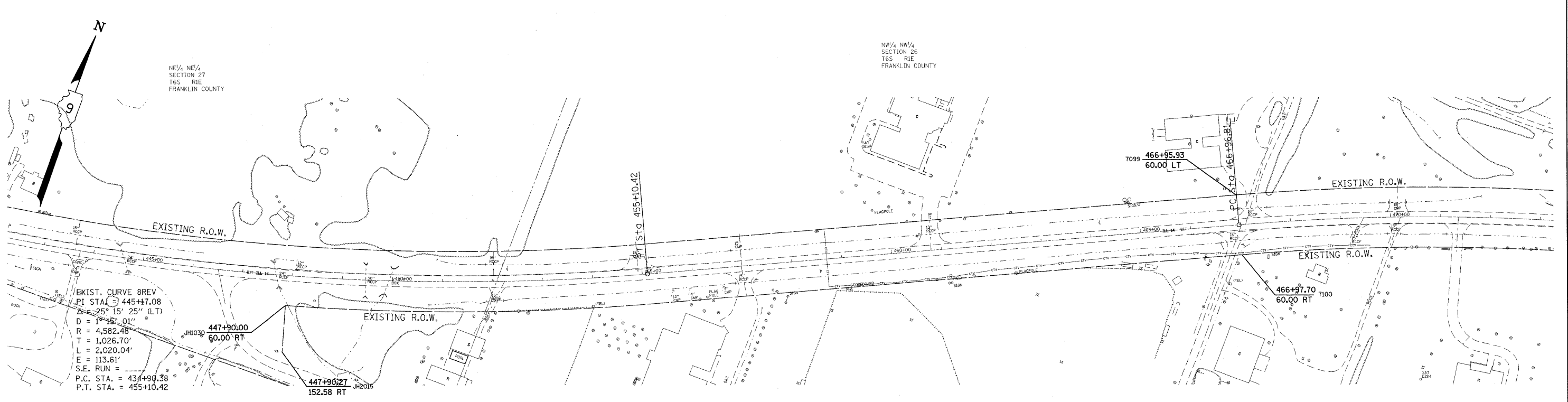


PARCEL NO.	NAME	ROW	TE	PE
580	EARL AND VIRGINIA GIACOMO	0.227 ±		
581	PETE PERONA & MICHAEL WINGET	SEE SHEET 4	0.007 ±	

**POINT COORDINATES**

Pt JT1010	X 767279.9313	Y 477529.6242
Pt JT1011	X 767279.8608	Y 477524.6247
Pt JT1081	X 767610.3398	Y 477556.2673
Pt JT1082	X 767609.9168	Y 477526.2700
Pt JT1083	X 767280.3543	Y 477559.6215
Pt JT1089	X 766666.4465	Y 477545.8606
Pt JT1091	X 766293.9609	Y 477548.8953
Pt JT1092	X 766293.8996	Y 477538.8955
Pt JT1110	X 767280.7410	Y 477587.0063
Pt JH1026	X 767093.6228	Y 477531.5180
Pt JH1027	X 767093.5720	Y 477526.5182
Pt JH1028	X 767343.5591	Y 477523.9772
Pt JH1029	X 767343.6099	Y 477528.9769
Pt 7086	X 766666.3448	Y 477535.8611



**POINT COORDINATES**

Pt JH1030	X 769584.8163	Y 477691.6610
Pt JH2015	X 769610.0866	Y 477602.5930

SE 1/4 NW 1/4  
SECTION 27  
T6S R1E  
FRANKLIN COUNTY

NW 1/4 NW 1/4  
SECTION 26  
T6S R1E  
FRANKLIN COUNTY

NE 1/4 NW 1/4  
SECTION 26  
T6S R1E  
FRANKLIN COUNTY

FILE NAME c:\pwork\pwork\collemm\dms43654\90222sht.dgn	USER NAME = collemm	DESIGNED -	REVISED -	<b>STATE OF ILLINOIS DEPARTMENT OF TRANSPORTATION</b>	<b>RIGHT OF WAY PLANS</b>		F.A.P. RTE. 869	SECTION (1-1,1,3,6)R-1,RS-3(1,3,6)B-2	COUNTY *	TOTAL SHEETS 299	SHEET NO. 100
PLOT SCALE = 100.0000' / 1" IN.	CHECKED -	REVISED -	REVISED -		PROJECT D901803	JOB NO. R-99-022-02	* FRANKLIN AND PERRY		CONTRACT NO. 98797		
PLOT DATE = 3/24/2011	DATE -	REVISED -	REVISED -		SCALE: 100	SHEET NO. 5 OF 6 SHEETS	STA. 414+00 TO STA. 473+00		FED. ROAD DIST. NO. ILLINOIS FED. AID PROJECT		