

B.M. - Double Nail in Power Pole
43' Lt. Sta. 15+23
Assumed Elev. 492.90

Existing Structure - Concrete deck on steel stringers with closed concrete abutments. 16.0' W x 26.0' L

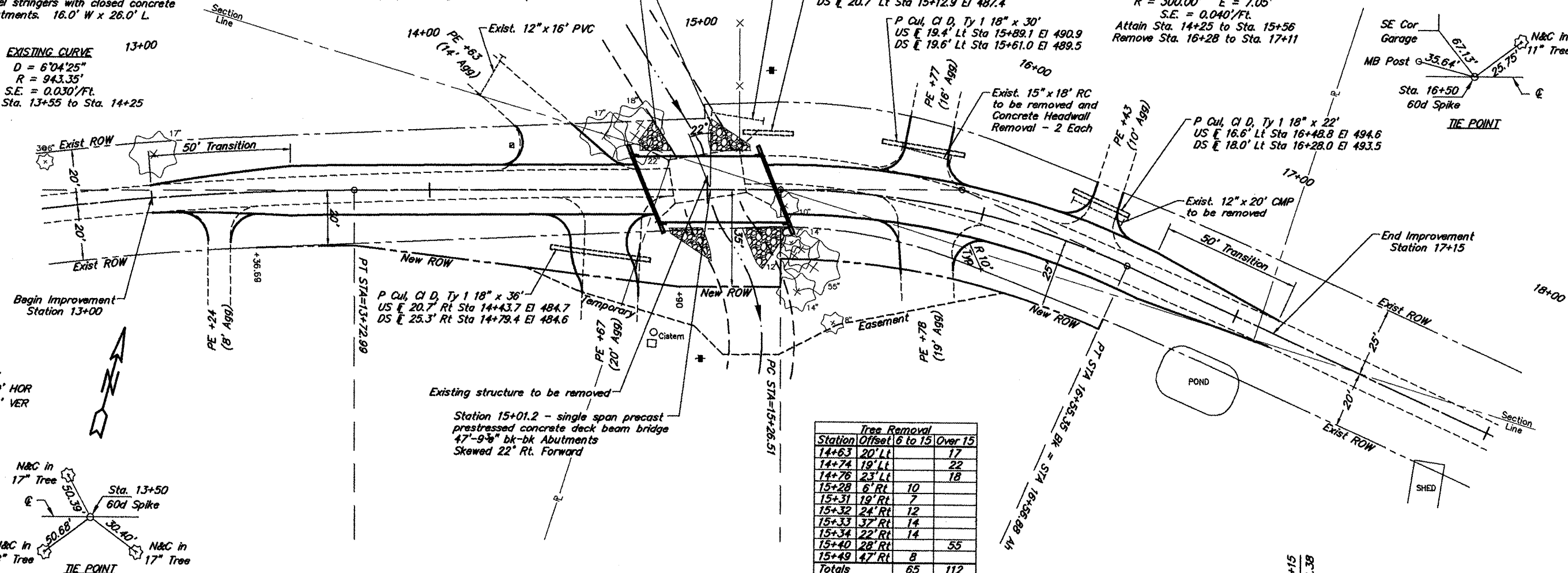
Place Stone Dumped Riprap, Class A5 on transition area between existing channel bank and the abutment slopes as directed by the Engineer. Estimated quantity - 57 Tons
Riprap to be grouted. See Special Provisions.

CURVE DATA

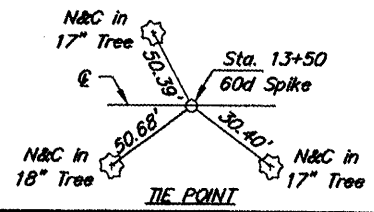
PI Sta = 15+91.94
Δ = 24°36'21" T = 65.43'
D = 19°05'55" L = 128.84'
R = 300.00' E = 7.05'
S.E. = 0.040'/Ft.
Attain Sta. 14+25 to Sta. 15+56
Remove Sta. 16+28 to Sta. 17+11

ROUTE	SECTION	COUNTY	TOTAL SHEETS	SHEET NO.
TR 151A	08-08106-00-BR	JACKSON	12	3
PROJECT NO. BROS-077(54)		CONTRACT NO. 99357		

EXISTING CURVE 13+00
D = 6°04'25"
R = 943.35'
S.E. = 0.030'/Ft.
Remove Sta. 13+55 to Sta. 14+25



SCALES:
1" = 40' HOR
1" = 10' VER



Station	Offset	6 to 15	Over 15
14+63	20' Lt		17
14+74	19' Lt		22
14+76	23' Lt		18
15+28	6' Rt	10	
15+31	19' Rt	7	
15+32	24' Rt	12	
15+33	37' Rt	14	
15+34	22' Rt	14	
15+40	28' Rt		55
15+49	47' Rt	8	
Totals		65	112

