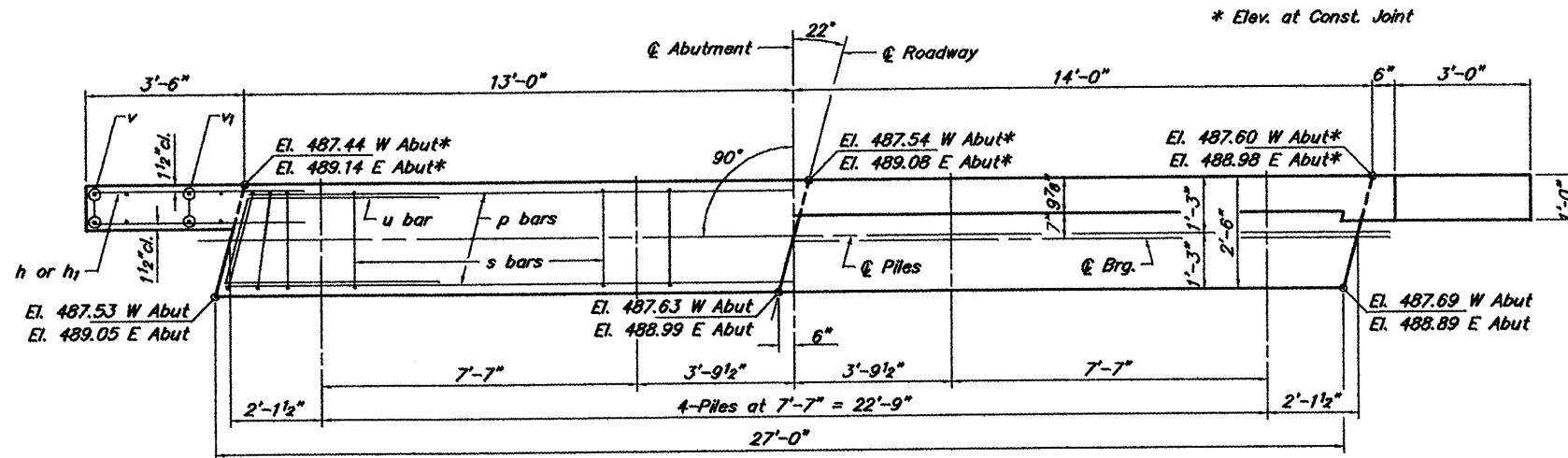
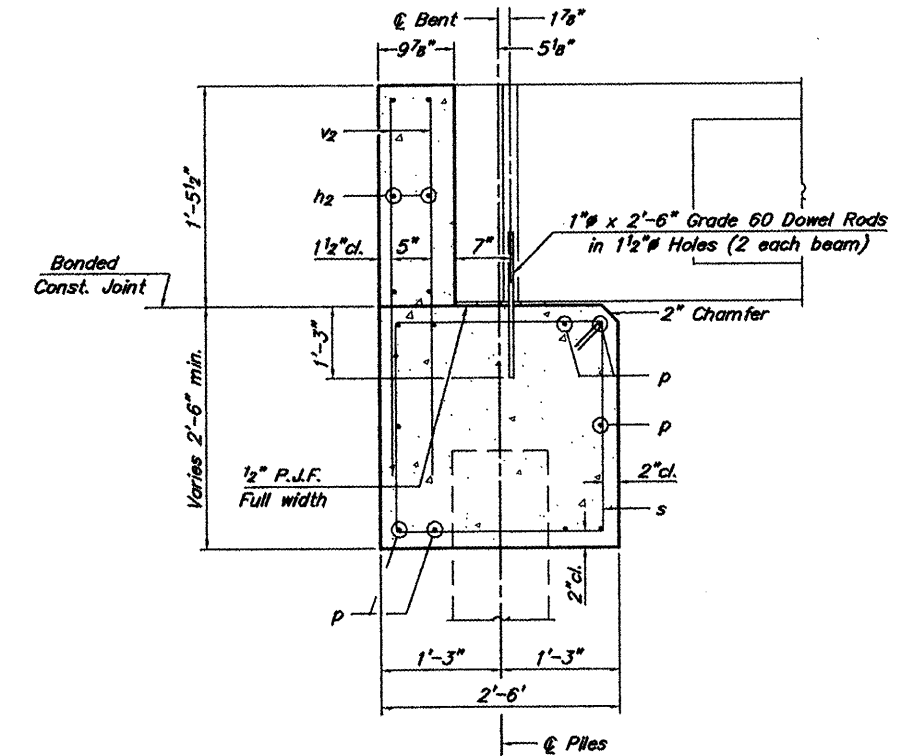


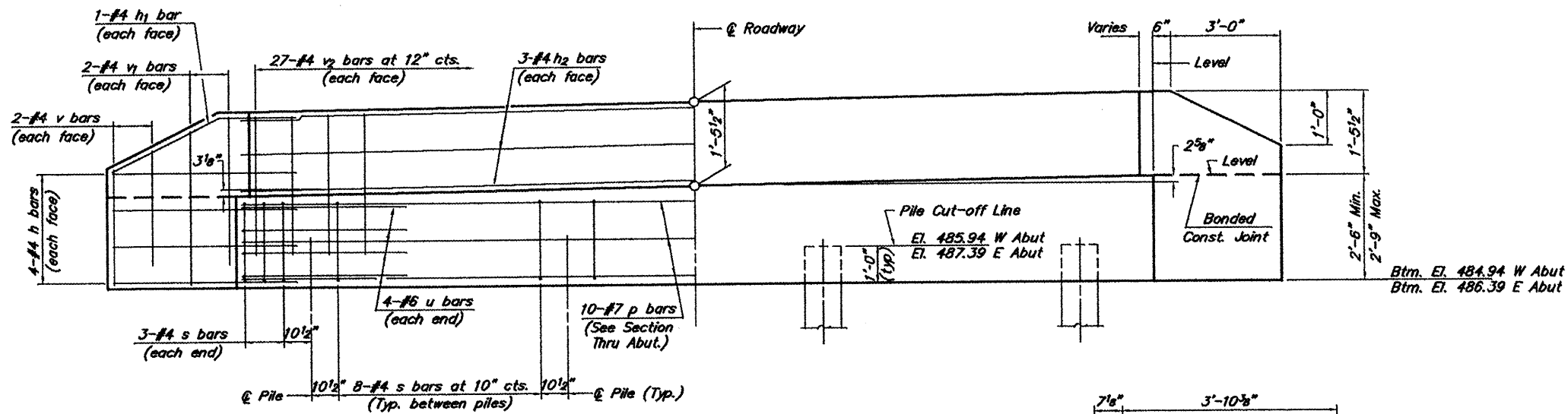
ROUTE	SECTION	COUNTY	TOTAL SHEETS	SHEET NO
TR 151A	08-08106-00-BR	JACKSON	12	7
PROJECT NO. BROS-077(54)			CONTRACT NO. 99357	



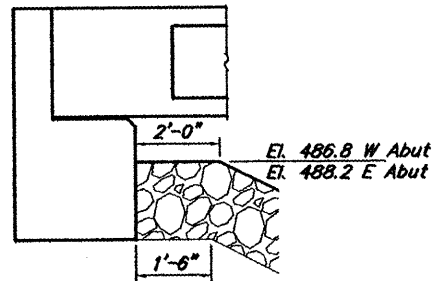
PLAN



SECTION THRU ABUT.
(At Right Angles)



ELEVATION
(Reverse cross slope for E Abut)

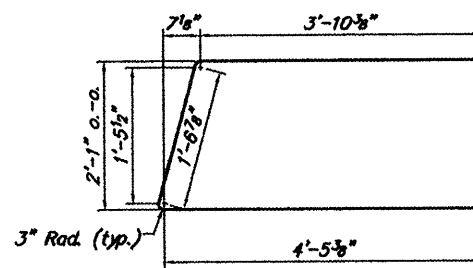


BERM DETAIL
(At Right Angles to Abut.)

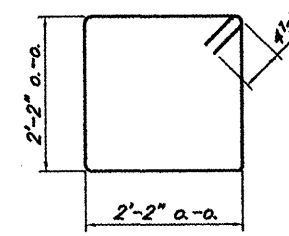
- NOTES**
- The Backwall and the portion of the Wingwalls above the bonded construction joint shall be cast against the in-place beam.
 - Reinforcement bars shall conform to A.A.S.H.T.O. M-31, M-42 or M-53, Grade 60.

DESIGN STRESSES

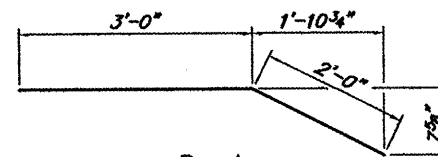
$f'_c = 3,500$ psi
 $f_y = 60,000$ psi



Bar u



Bar s



Bar h1

BILL OF MATERIAL FOR ONE ABUTMENT

Bar	No.	Size	Length	Shape
h	16	#4	5'-4"	—
h1	4	#4	5'-4"	—
h2	6	#4	26'-8"	—
p	10	#7	26'-8"	—
s	30	#4	9'-5"	□
u	8	#6	10'-8"	—
v	8	#4	2'-10"	—
v1	8	#4	3'-6"	—
v2	54	#4	3'-1"	—
Concrete Structures			8.7	Cu. Yds.
Reinforcement Bars			1185	Lbs.

ABUTMENT
TOWNSHIP ROUTE 151A (MORBER ROAD)
JOHNSON CREEK
SECTION 08-08106-00-BR
JACKSON COUNTY
STRUCTURE NO. 039-3269