

STATE OF ILLINOIS  
DEPARTMENT OF TRANSPORTATION  
DIVISION OF HIGHWAYS

PLANS FOR PROPOSED  
HIGHWAY BRIDGE PROGRAM  
GRADE CROSSING PROTECTION FUND

PROJECT BROS-081(53)  
SECTION 05-16113-00-BR  
WEBBER ROAD DISTRICT  
JEFFERSON COUNTY  
DENKER ROAD / T.R. 165B  
OVER C.N./I.C. RAILROAD AT M.P. 37.0  
PROPOSED STRUCTURE NO. 041-9932  
JOB NO. C-99-589-06

ROUTE NO.	SECTION	COUNTY	TOTAL SHEETS	SHEET NO.
T.R. 165B	05-16113-00-BR	JEFFERSON	34	1
FED. ROAD DIST. NO.		ILLINOIS	CONTRACT NO. 99440	

INDEX OF SHEETS

SHEET NO.	DESCRIPTION
1.	COVER SHEET
2.	SUMMARY OF QUANTITIES AND GENERAL NOTES
3.	SCHEDULE OF QUANTITIES
4.	TYPICAL SECTIONS AND ENTRANCE DETAILS
5.-8.	PLAN AND PROFILES
9.	EROSION CONTROL PLAN
10.-22.	STATION CROSS SECTIONS
23.-33.	BRIDGE PLANS
34.	BORINGS

HIGHWAY STANDARDS:

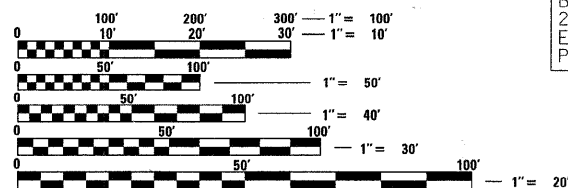
000001-06	STANDARD SYMBOLS, ABBREVIATIONS, AND PATTERNS
515001-03	NAME PLATE FOR BRIDGES
630301-05	SHOULDER WIDENING FOR TYPE 1 (SPECIAL) GUARDRAIL TERMINALS
701901-01	TRAFFIC CONTROL DEVICES
BLR 21-8	TYPICAL APPLICATION OF TRAFFIC CONTROL DEVICES FOR CONSTRUCTION ON RURAL LOCAL HIGHWAYS
BLR 24-2	MAILBOX TURNOUT FOR LOCAL ROADS
BLR 27-1	TRAFFIC BARRIER TERMINAL, TYPE 5A

UTILITIES

ELECTRIC:  
TRI-COUNTY ELECTRIC COOPERATIVE  
3906 BROADWAY  
MT. VERNON, IL 62864  
ATTN: DENNIS IVERS

WATER:  
WESTERN WAYNE WATER DISTRICT  
102 SOUTH MAIN ST.  
WAYNE CITY, IL 62895  
ATTN: ROGER JOHNSON

TELEPHONE:  
AT&T / DISTRIBUTION  
529 S. SEVENTH ST.  
SPRINGFIELD, IL 62703



FULL SIZE PLANS HAVE BEEN PREPARED USING STANDARD ENGINEERING SCALES. REDUCED SIZED PLANS WILL NOT CONFORM TO STANDARD SCALES. IN MAKING MEASUREMENTS ON REDUCED PLANS, THE ABOVE SCALES MAY BE USED.

CONTRACT NO. 99440



FUNCTIONAL CLASSIFICATION: LOCAL ROAD (0-250 ADT)  
DESIGN SPEED: 30 MPH  
DESIGN TRAFFIC: 100 ADT (2023)

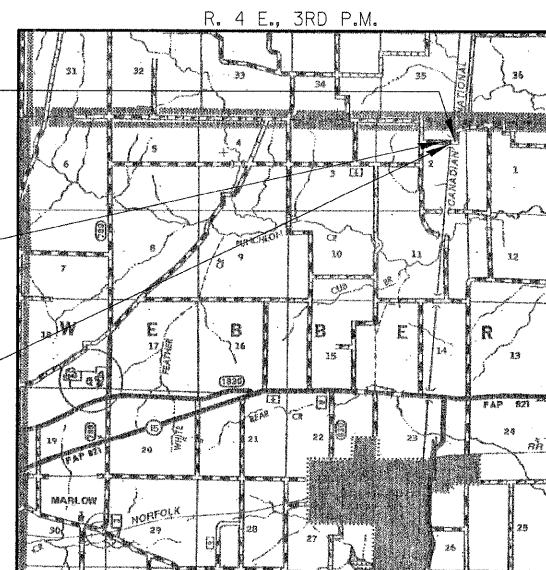
ILLINOIS DEPARTMENT OF TRANSPORTATION

APPROVED *Steve Schrade* 2-8 2011  
COUNTY ENGINEER

APPROVED *Terry Marlar* 2-8 2011  
ROAD COMMISSIONER

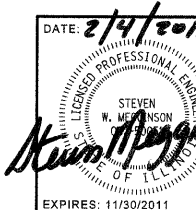
PASSED *David W. Hill* FEBRUARY 23 2011  
DISTRICT NINE ENGINEER OF LOCAL ROADS & STREETS

Releasing For Bid Based on Limited Review  
*Mary C. Lurie* 2-23 2011  
DEPUTY/DIRECTOR OF HIGHWAYS  
REGION FIVE ENGINEER  
STATE OF ILLINOIS  
DEPARTMENT OF TRANSPORTATION



LOCATION MAP

APPROXIMATE SCALE: 0 1 MILE  
NET LENGTH OF SECTION = 1,050 FEET = 0.199 MILES



HAMPTON, LENZINI AND RENWICK, INC.  
CIVIL ENGINEERS - STRUCTURAL ENGINEERS - LAND SURVEYORS  
3085 STEVENSON DRIVE, SUITE 201  
SPRINGFIELD, ILLINOIS 62703  
217.546.3400 www.hlrengineering.com

PROJECT NUMBER: 09.0172.130

DATE: 02/03/11