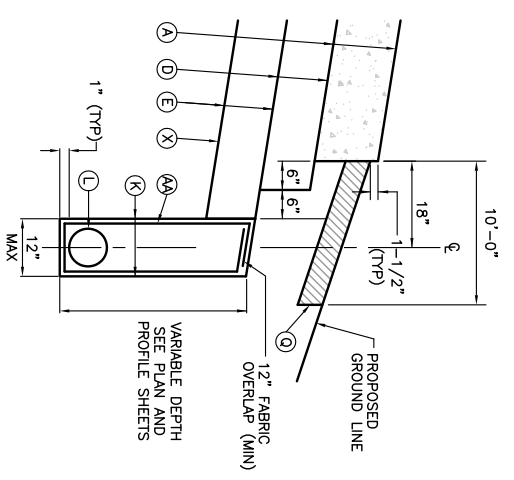
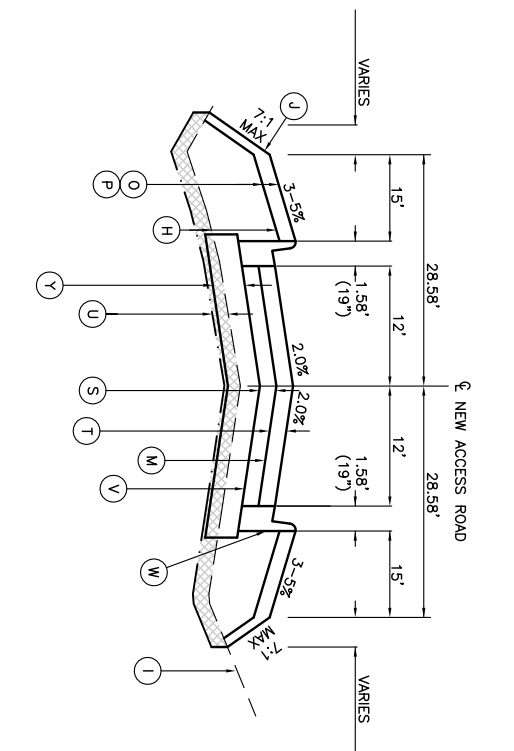


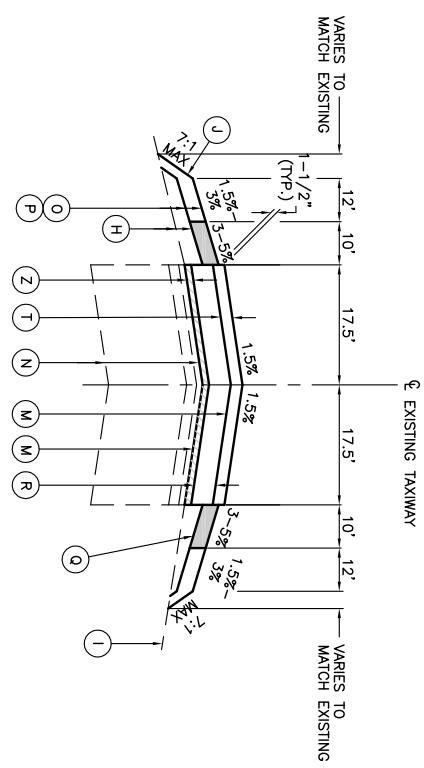
NEW TAXIWAY E TYPICAL SECTION A-A
NOT TO SCALE



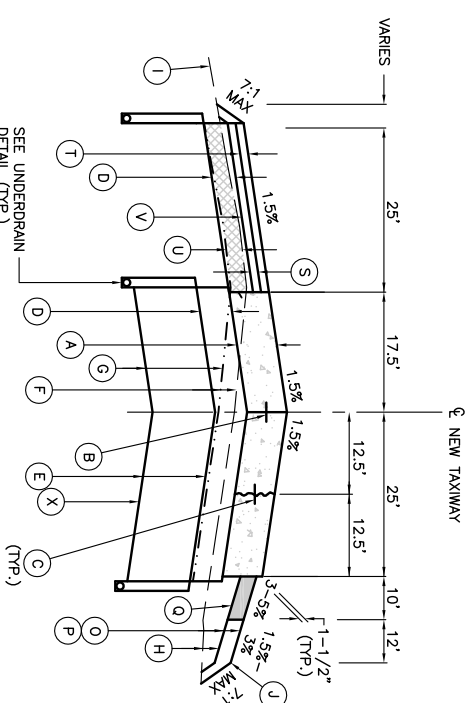
UNDERDRAIN DETAIL
EDGE OF P.C.C. PAVEMENT AREAS
NOT TO SCALE



NEW ACCESS ROAD SECTION D-D
NOT TO SCALE



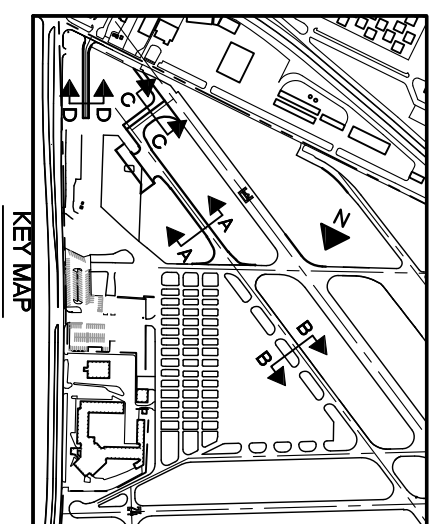
TAXIWAY E AND TAXIWAY A OVERLAY TYPICAL SECTION B-B
NOT TO SCALE



NEW TAXIWAY E1 TYPICAL SECTION C-C
NOT TO SCALE

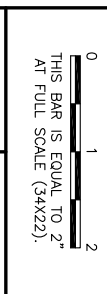
LEGEND

- (A) NEW 10" P.C. CONCRETE PAVEMENT (501)
- (B) NEW DOWEL BAR (501)
- (C) NEW TIE BAR (501)
- (D) NEW 6" CRUSHED AGGREGATE BASE COURSE (209)
- (E) NEW 12" POROUS GRANULAR EMBANKMENT (208)
- (F) NEW 7" AVERAGE TOPSOIL STRIPPING (152)
- (G) NEW UNCLASSIFIED EXCAVATION (152)
- (H) NEW SHOULDER FILL (152)
- (I) EXISTING GROUND LINE
- (J) NEW GROUND LINE
- (K) NEW POROUS BACKFILL (705)
- (L) NEW 6" CPPUP WITH SOCK (705)
- (M) NEW TACK COAT (603)
- (N) EXISTING 1-1/2" BITUMINOUS SURFACE COURSE (401)
- (O) EXISTING 2-1/2" BITUMINOUS BASE COURSE (201)
- (P) EXISTING 19-1/2" CRUSHED AGGREGATE BASE COURSE (209)
- (Q) NEW TOPSOIL PLACEMENT (4" MINIMUM)(905)
- (R) NEW SEEDING AND MULCHING (901 AND 908)
- (S) NEW 10' WIDE SOIL GUARD (800)
- (T) NEW 3" BITUMINOUS BASE COURSE (201)
- (U) NEW 2" BITUMINOUS SURFACE COURSE (201)
- (V) NEW 2" BITUMINOUS SURFACE COURSE (401)
- (W) NEW BITUMINOUS/P.C.C. PAVEMENT REMOVAL
- (X) NEW PRIME COAT (602)
- (Y) NEW COMBINATION CURB AND GUTTER, TYPE B-6:12 (IDOT STD 606001-04)
- (Z) NEW SOIL STABILIZATION FABRIC (152)
- (AA) NEW 8" CRUSHED AGGREGATE BASE COURSE (209)
- (AB) NEW VARIABLE DEPTH BITUMINOUS PAVEMENT MILLING
- (AC) NEW UNDERDRAIN TRENCH FABRIC ENVELOPE (INCIDENTAL TO UNDERDRAIN) (705)



KEY MAP

NUMBER	BY	DATE



**CHICAGO EXECUTIVE AIRPORT
WHEELING/PROSPECT HEIGHTS, ILLINOIS
CONSTRUCT PARTIAL PARALLEL TAXIWAY ECHO AND
PARTIAL OVERLAY OF TAXIWAY ECHO**

TYPICAL SECTIONS

© Copyright CMT, Inc.

CMT
CRAWFORD, MURPHY & TILLY, INC.
CONSULTING ENGINEERS
License No. 184-000613

CHICAGO EXECUTIVE AIRPORT

DESIGN BY:	MLK
DRAWN BY:	JRO
CHECKED BY:	MLK
APPROVED BY:	DLP
DATE:	04/22/11
JOB No.:	08290-08
ILLINOIS PROJECT:	PWK-3244
A.I.P. PROJECT:	3-17-0018-B32
SHEET	10 OF 49 SHEETS