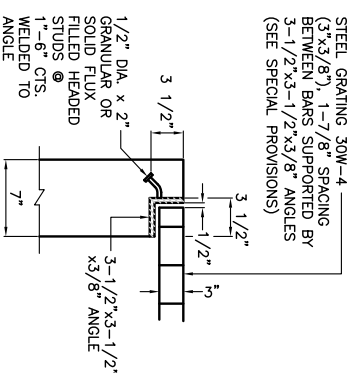
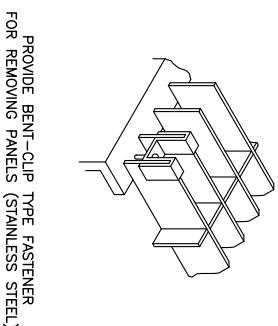


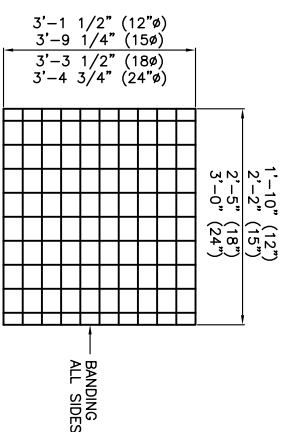
DETAIL A
NO SCALE



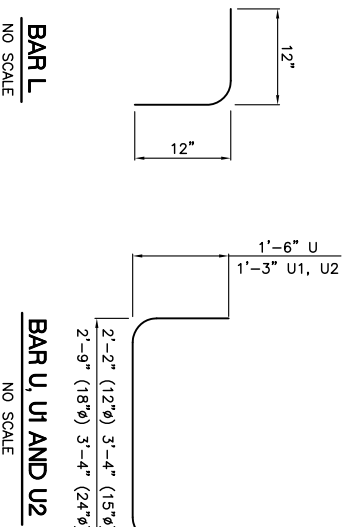
SECTION-B
NO SCALE



SADDLE CLIP
NO SCALE



ONE SECTION OF GRATING DETAILED.
TOTAL OF 3 SECTIONS REQUIRED FOR 12" & 15".
TOTAL OF 4 SECTIONS REQUIRED FOR 18".
TOTAL OF 5 SECTIONS REQUIRED FOR 24".
SEE SPECIAL PROVISIONS FOR FURTHER DETAILS.



BAR L
NO SCALE

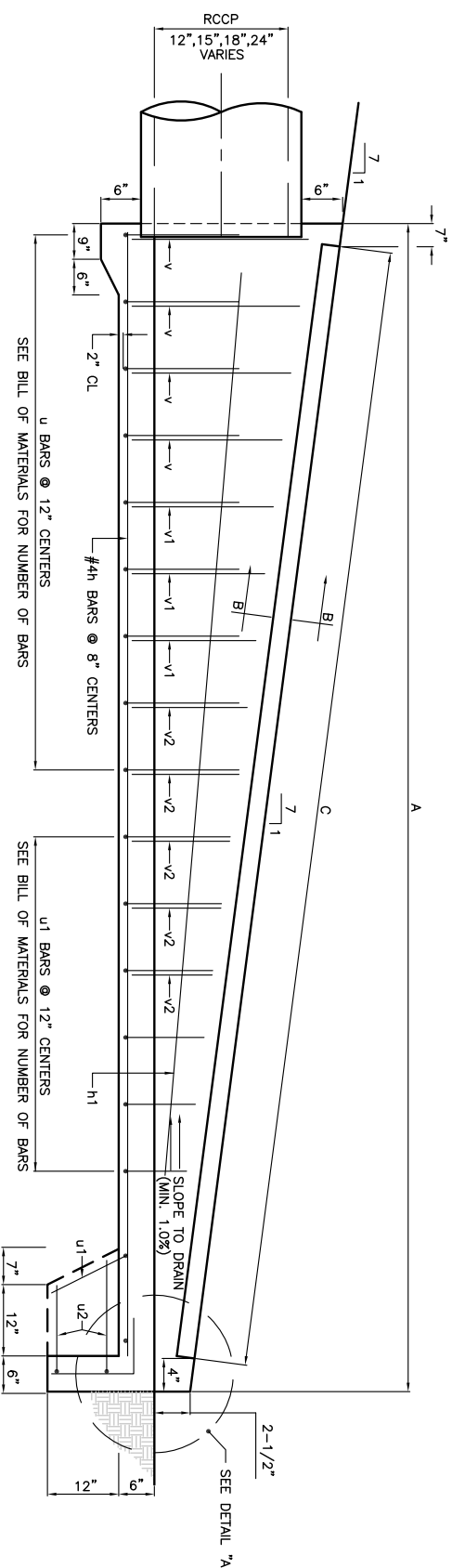
BAR U, U1 AND U2
NO SCALE

BILL OF MATERIALS
INLET BOX

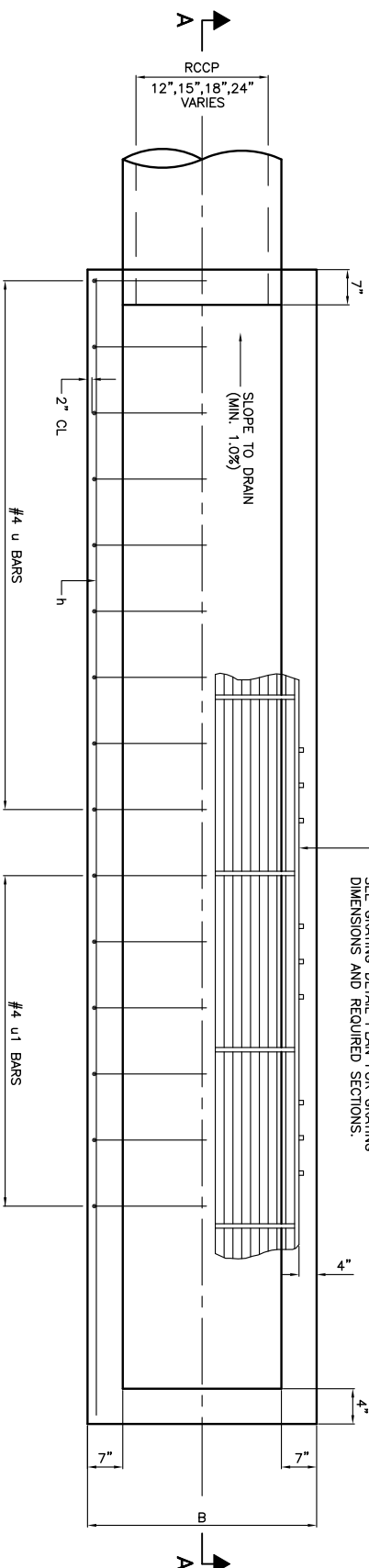
TYPE	BAR	QUANTITY	SIZE	LENGTH
12"	h	4	#4	9'-11"
15"	h	4	#4	11'-7"
18"	h	6	#4	13'-8"
24"	h	6	#4	17'-6"
12"	h1	2	#4	8'-0"
15"	h1	2	#4	10'-0"
18"	h1	2	#4	12'-0"
24"	h1	2	#4	15'-0"
12"	L	4	#4	2'-0"
15"	L	4	#4	2'-0"
18"	L	4	#4	2'-0"
24"	L	4	#4	2'-0"
12"	U	4	#4	5'-2"
15"	U	6	#4	5'-6"
18"	U	8	#4	5'-9"
24"	U	12	#4	6'-4"
12"	U1	4	#4	4'-8"
15"	U1	3	#4	5'-0"
18"	U1	4	#4	5'-3"
24"	U1	4	#4	5'-10"
12"	U2	2	#4	4'-8"
15"	U2	2	#4	5'-0"
18"	U2	2	#4	5'-3"
24"	U2	2	#4	5'-10"
12"	V	4	#4	1'-4"
15"	V	4	#4	1'-8"
18"	V	6	#4	1'-10"
24"	V	6	#4	2'-5"
12"	V1	-	#4	-
15"	V1	4	#4	1'-4"
18"	V1	6	#4	1'-5"
24"	V1	6	#4	2'-0"
12"	V2	-	#4	-
15"	V2	-	#4	-
18"	V2	-	#4	-
24"	V2	8	#4	1'-6"
CONCRETE STRUCTURES				
12"			CU.YD.	2
15"			CU.YD.	2
18"			CU.YD.	3
24"			CU.YD.	3
REINFORCEMENT BARS				
12"			POUND	85
15"			POUND	100
18"			POUND	145
24"			POUND	200
GRATING				
12"			SQ.FT.	18
15"			SQ.FT.	25
18"			SQ.FT.	32
24"			SQ.FT.	51

TABLE OF DIMENSIONS

DIMENSION	12"	15"	18"	24"
A	10'-3"	12'-1"	14'-0"	17'-10"
B	2'-6"	2'-10"	2'-8"	2'-8"
C	9'-5"	11'-4"	13'-3"	17'-1"



SECTION A-A
NO SCALE



PLAN
NO SCALE

K:\Chicago\exa\p\0829008.tbl E:\Draw\Sheets\1\work
FILE: lxy - slope - box - dtl.dwg
LAYOUT: Layout1
UPDATE BY: mikatz
SUPERV BOOK #
DATE: Fri 4/1/11 9:16am
XREF DWG: tb.dwg
tbcont.dwg
tblcont_lxy.dwg

REVISIONS

NUMBER	BY	DATE

0 1 2
THIS BAR IS EQUAL TO 2"
AT FULL SCALE (34X22).

**CHICAGO EXECUTIVE AIRPORT
WHEELING/PROSPECT HEIGHTS, ILLINOIS
CONSTRUCT PARTIAL PARALLEL TAXIWAY ECHO AND
PARTIAL OVERLAY OF TAXIWAY ECHO**

SLOPE BOX INLET DETAILS

© Copyright CMT, Inc.
CMT
CRAWFORD, MURPHY & TILLY, INC.
CONSULTING ENGINEERS
License No. 184-000613



DESIGN BY: ATI
DRAWN BY: MIW
CHECKED BY: MLK
APPROVED BY: DLP
DATE: 04/22/11
JOB No: 08290-08
ILLINOIS PROJECT: PWK-3244
A.I.P. PROJECT: 3-17-0018-B32
SHEET 26 OF 49 SHEETS