

STATE OF ILLINOIS
DEPARTMENT OF TRANSPORTATION
**PROPOSED
HIGHWAY PLANS**

FAI ROUTE 57 (I 57)
SECTION (38-8)RA-L2
PROJECT NHPP-QZU0(009)
TYPE of IMPROVEMENT - LIGHTING
IROQUOIS COUNTY

C-93-106-21

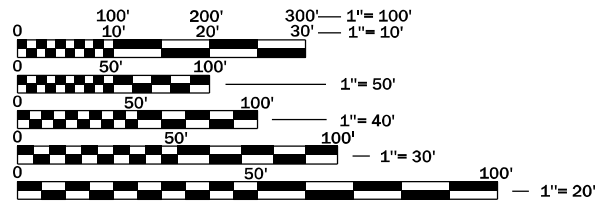
F.A.I. RTE.	SECTION	COUNTY	TOTAL SHEETS	SHEET NO.
57	(38-8)RA-L2	IROQUOIS	17	1
		ILLINOIS	CONTRACT NO. 66M05	

INDEX

- 1 COVER SHEET
- 2 GENERAL NOTES
- 3-4 SUMMARY OF QUANTITIES
- 5 LIGHT TOWER ID DETAIL
- 6-9 LIGHTING REMOVAL
- 10-13 PROPOSED LIGHTING PLANS
- 14 LUMINAIRE TABLE
- 15 ELECTRICAL DETAIL
- 16-17 SOIL BORINGS

LIST OF ILLINOIS DOT HIGHWAY STANDARDS

- 000001-08 STANDARD SYMBOLS, ABBREVIATIONS AND PATTERNS
- 001001-02 AREAS OF REINFORCEMENT BARS
- 001006 DECIMAL OF AN INCH AND OF A FOOT
- 701001-02 OFF ROAD OPERATIONS 2L, 2W, MORE THAN 15' AWAY
- 701006-05 OFF-ROAD OPERATIONS 2L, 2W, 15' TO 24" FROM PAVEMENT EDGE
- 701011-04 OFF-ROAD MOVING OPERATIONS 2L, 2W, DAY ONLY
- 701201-05 LANE CLOSURE, 2L, 2W, DAY ONLY, FOR SPEEDS ≥ 45 MPH
- 701456-05 PARTIAL EXIT RAMP CLOSURE FREEWAY/EXPRESSWAY
- 701801-06 SIDEWALK, CORNER OR CROSSWALK CLOSURE
- 701901-08 TRAFFIC CONTROL DEVICES
- 821101-02 LUMINAIRE WIRING IN POLE
- 835001-01 LIGHT TOWER
- 837001-05 LIGHT TOWER FOUNDATION
- 838001-01 BREAKAWAY DEVICES

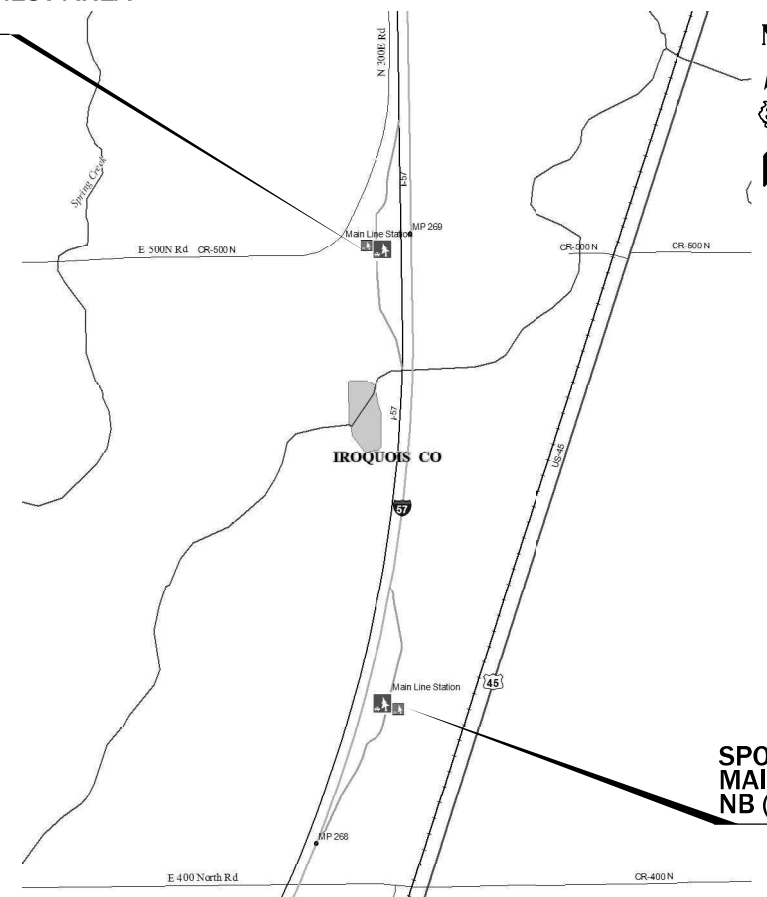


FULL SIZE PLANS HAVE BEEN PREPARED USING STANDARD ENGINEERING SCALES. REDUCED SIZED PLANS WILL NOT CONFORM TO STANDARD SCALES. IN MAKING MEASUREMENTS ON REDUCED PLANS, THE ABOVE SCALES MAY BE USED.

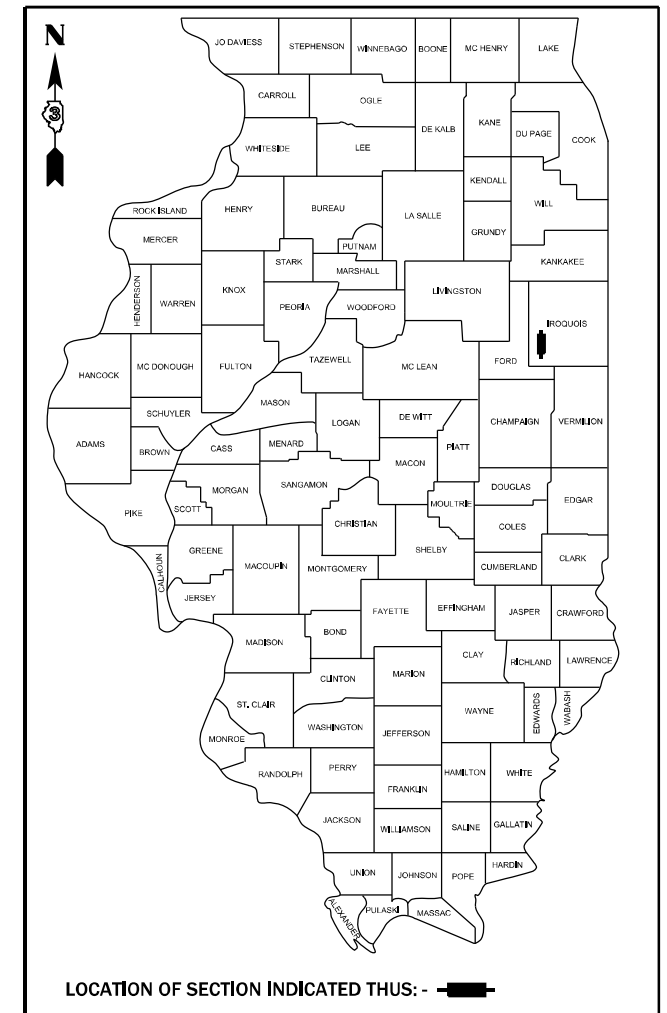
J.U.L.I.E.
JOINT UTILITY LOCATION INFORMATION FOR EXCAVATION
1-800-892-0123
OR 811

PROJECT ENGINEER – BRAD DUNCAN
UNIT CHIEF – DARCY CARPENTER
DISTRICT 3 NO. (815) 434-6131
CONTRACT NO. 66M05

SPOT IMPROVEMENT
MAIN LINE STATION REST AREA
SB (I 57) MM 269



SPOT IMPROVEMENT
MAIN LINE STATION REST AREA
NB (I 57) 268



LOCATION OF SECTION INDICATED THIS: - [thick black line]

RURAL INTERSTATE

2019 ADT = 15900

PU=60.9% SU=3.9% MU=35.2%

STATE OF ILLINOIS
DEPARTMENT OF TRANSPORTATION

SUBMITTED March 18, 2022
Mark Arnold
REGIONAL ENGINEER

May 13, 2022
Scott A. Etk
ENGINEER OF DESIGN AND ENVIRONMENT

May 13, 2022
Stephen M. Smith
DIRECTOR OF HIGHWAYS PROJECT IMPLEMENTATION

PRINTED BY THE AUTHORITY
OF THE STATE OF ILLINOIS

GENERAL NOTES

THE MAINTENANCE OF THE EXISTING LIGHTING WILL BE THE RESPONSIBILITY OF THE CONTRACTOR ACCORDING TO ARTICLE 801.11(a) UNTIL THE NEW LIGHT TOWERS AND LIGHT POLES ARE APPROVED BY THE RESIDENT ENGINEER/TECHNICIAN.

FOR STABILIZATION, ALL TYPE III BARRICADES WILL REQUIRE A MINIMUM OF FOUR SAND BAGS PER BARRICADE.

SEEDING WILL NOT BE PERMITTED AT ANY TIME WHEN THE GROUND IS FROZEN, WET, OR IN AN UNTILLABLE CONDITION. LOCATIONS TO BE SEEDED WILL BE DETERMINED BY THE ENGINEER.

THERE ARE NO TREES SCHEDULED TO BE REMOVED ON THIS PROJECT. IF TREES ARE TO BE REMOVED FOR WHATEVER REASON THEY WILL NOT BE ALLOWED TO BE REMOVED BETWEEN APRIL 1ST AND SEPTEMBER 30TH OF ANY GIVEN YEAR.

THE FINISHED EARTHWORK SHALL HAVE A VEGETATION SUSTAINING SOIL COVERING THE TOP FOUR INCHES (100 MILLIMETERS) IN AREAS TO BE SEEDED OR SODDED. THE VEGETATION SUSTAINING SOIL REQUIRED WILL NOT BE PAID FOR SEPARATELY BUT WILL BE INCLUDED IN THE COST OF THE LIGHTING PAY ITEMS.

ALL EXCAVATED MATERIAL, WHICH INCLUDES DIGGING OR GRADING OF ANY SOIL OR FILL MATERIAL, WITH THE EXCEPTION OF AGGREGATE FILLS, MUST BE INCORPORATED WITHIN THE IDOT RIGHT OF WAY DUE TO ENVIRONMENTAL DOCUMENTATION REQUIREMENTS.

ALL ELEVATIONS REFERRING TO U.S.G.S. MEAN SEA LEVEL DATUM.

ABANDONED UNDERGROUND UTILITIES THAT CONFLICT WITH CONSTRUCTION SHALL BE DISPOSED OF OUTSIDE THE LIMITS OF THE RIGHT OF WAY ACCORDING TO ARTICLE 202.03 OF THE STANDARD SPECIFICATIONS AND AS DIRECTED BY THE ENGINEER. THIS WORK WILL NOT BE PAID FOR SEPARATELY, BUT WILL BE INCLUDED IN THE COST OF THE LIGHTING PAY ITEMS.

ANY REFERENCE TO A STANDARD IN THESE PLANS SHALL BE INTERPRETED TO MEAN THE EDITION AS INDICATED BY THE SUBNUMBER SHOWN IN THE LIST OF STANDARDS OR THE COPY INCLUDED IN THESE PLANS.

THE CONTRACTOR'S ATTENTION IS DIRECTED TO THE PRESENCE OF DEPARTMENT-OWNED UNDERGROUND ELECTRICAL CABLE WITHIN THE LIMITS OF THE PROPOSED IMPROVEMENT. THE CONTRACTOR SHALL REQUEST THE ILLINOIS DEPARTMENT OF TRANSPORTATION IN OTTAWA (815-434-8417) TO LOCATE THE UNDERGROUND FACILITIES, PROVIDING A MINIMUM OF 72 HOURS NOTICE. THE DEPARTMENT IS NOT A MEMBER OF THE JOINT UTILITY LOCATING INFORMATION FOR EXCAVATORS (JULIE) SYSTEM.

ALL DAMAGE TO DEPARTMENT OWNED UNDERGROUND FACILITIES, CAUSED BY THE CONTRACTOR SHALL BE REPAIRED TO THE SATISFACTION OF THE DEPARTMENT AT THE CONTRACTOR'S EXPENSE. THIS SHALL INCLUDE ALL TEMPORARY REPAIRS REQUIRED TO KEEP THE FACILITY OPERATIONAL WHILE MATERIAL IS BEING OBTAINED TO MAKE PERMANENT REPAIRS. SPlicing OF ELECTRIC CABLE WILL NOT BE ALLOWED. ELECTRIC CABLE SHALL BE REPLACED FROM POLE TO POLE OR CONTROLLER.

THERE IS A WATER SERVICE LINE FOR THE REST AREA THAT MUST BE LOCATED BEFORE WORK BEGINS. IT IS DEPARTMENT OWNED AND NOT A PART OF JULIE. THE CONTRACTOR SHALL LOCATE THE WATER SERVICE LINE FOR NB AND SB REST AREAS AT THEIR OWN EXPENSE.

ALL PROPOSED LIGHT TOWERS SHALL BE GALVANIZED STEEL.

KNOWN MEMBERS OF JULIE KNOWN TO BE WITHIN THE LIMITS OF THE IMPROVEMENT ARE:
AMEREN, CMS, EIEC, FRONTIER, NICOR, WINDRSTREAM
METRO COMMUNICATIONS AND VILLAGE OF BUCKLEY

NON-MEMBERS OF JULIE KNOWN TO BE WITHIN THE LIMITS OF THE IMPROVEMENT ARE:
ILLINOIS DEPARTMENT OF TRANSPORTATION

THE CONTRACTOR SHALL CONTACT JULIE AT LEAST 48 HOURS PRIOR TO EXCAVATION TO DETERMINE WHICH UTILITIES ARE IN THE AREA.

STATE OF ILLINOIS
DEPARTMENT OF TRANSPORTATION
DISTRICT THREE
AS BUILT INFORMATION

SUPERVISING CONSTRUCTION FIELD ENGINEER

RESIDENT ENGINEER / TECHNICIAN

START & END DATES
OF CONSTRUCTION:

INSPECTORS:

STATE OF ILLINOIS
DEPARTMENT OF TRANSPORTATION
DISTRICT THREE

PREPARED BY: _____
DISTRICT STUDIES & PLANS ENGINEER

DATE: _____

EXAMINED BY: _____
DISTRICT CONSTRUCTION ENGINEER

DISTRICT MATERIALS ENGINEER

DISTRICT OPERATIONS ENGINEER

**STATE OF ILLINOIS
DEPARTMENT OF TRANSPORTATION**

GENERAL NOTES

SCALE: _____ SHEET ___ OF ___ SHEETS STA. _____ TO STA. _____

F.A.I. RTE.	SECTION	COUNTY	TOTAL SHEETS	SHEET NO.
57	(38-8)RA-L2	IROQUOIS	17	2
CONTRACT NO. 66M05				
ILLINOIS FED. AID PROJECT				

MODEL: Default
 FILE: \\na16c-pw-bentley.com\FW\DOT\Documents\DOT Office\Dir\Dir: 3\Project\10366605\CADD\10366605-shr-cover.dgn

MODEL: Default
 FILE NAME: p:\ultra-cw-bead\p\p\DOT Documents\DOT Office\Dir\dir: 3\Project\0366M05\CAD\DATA\0366M05-shr-cover.dgn

CODE NO.	ITEM	UNIT	TOTAL QUANTITY	CONSTR. CODE	
				90% FEDERAL 10% STATE	ROADWAY 0021 RURAL
67100100	MOBILIZATION	L SUM	1		1
70100825	TRAFFIC CONTROL AND PROTECTION, STANDARD 701456	L SUM	1		1
70107025	CHANGEABLE MESSAGE SIGN	CAL DA	60		60
81028720	UNDERGROUND CONDUIT, COILABLE NONMETALLIC CONDUIT, 1" DIA.	FOOT	2595		2595
81100454	CONDUIT ATTACHED TO STRUCTURE, 1" DIA., STAINLESS STEEL	FOOT	10		10
81702130	ELECTRIC CABLE IN CONDUIT, 600V (XLP-TYPE USE) 1/C NO. 6	FOOT	9375		9375
82110009	LUMINAIRE, LED, ROADWAY, OUTPUT DESIGNATION I	EACH	10		10
82110016	LUMINAIRE, LED, HIGHMAST, OUTPUT DESIGNATION I	EACH	24		24
82500430	LIGHTING CONTROLLER, WALL MOUNTED, 240VOLT, 100AMP	EACH	2		2
83503400	LIGHT TOWER, 110 FT. MOUNTING HEIGHT, LUMINAIRE MT. - 6	EACH	4		4
83700300	LIGHT TOWER FOUNDATION, 48" DIAMETER	FOOT	76		76
84500110	REMOVAL OF LIGHTING CONTROLLER	EACH	2		2
89502300	REMOVE ELECTRIC CABLE FROM CONDUIT	FOOT	9375		9375
X0324599	ROD AND CLEAN EXISTING CONDUIT	FOOT	9375		9375

USER NAME = pletschr	DESIGNED - _____	REVISED - _____
	DRAWN - _____	REVISED - _____
PLOT SCALE = 100,0000' / in.	CHECKED - _____	REVISED - _____
PLOT DATE = 3/17/2022	DATE - _____	REVISED - _____

**STATE OF ILLINOIS
 DEPARTMENT OF TRANSPORTATION**

SUMMARY OF QUANTITIES

SCALE: _____ SHEET ____ OF ____ SHEETS STA. _____ TO STA. _____

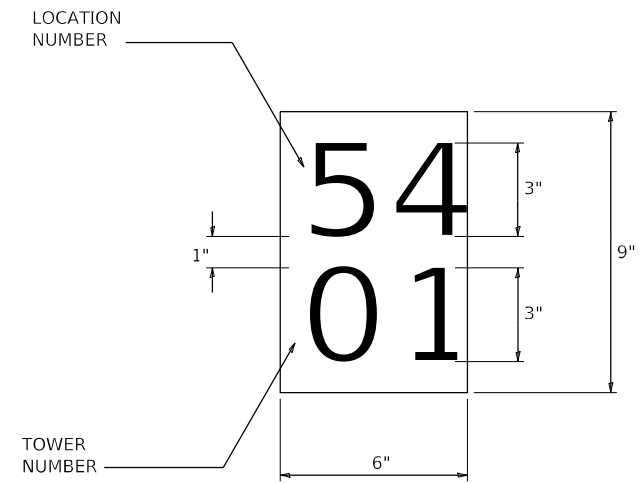
F.A.I. RTE.	SECTION	COUNTY	TOTAL SHEETS	SHEET NO.
57	(38-8)RA-L2	IROQUOIS	17	3
			CONTRACT NO. 66M05	
			ILLINOIS FED. AID PROJECT	

CODE NO.	ITEM	UNIT	TOTAL QUANTITY	CONSTR. CODE	
				90% FEDERAL 10% STATE	ROADWAY 0021 RURAL
X1400267	REMOVAL OF LIGHTING LUMINAIRE, NO SALVAGE	EACH	10		10
X8210402	LUMINAIRE MOUNTING BRACKET - SPECIAL	EACH	10		10
X8420502	REMOVAL OF LIGHT TOWER, NO SALVAGE	EACH	4		4
X8420510	REMOVAL OF TOWER FOUNDATION	EACH	4		4

MODEL: Default
 FILE NAME: p:\ultra-cw-bea\paw.com\FW\DOT\Documents\DOT Office\Dir\dir: 3\Project\0366M05\CAD\Date: 0366M05-4ht-cover.dgn

USER NAME = pletschr	DESIGNED - _____	REVISED - _____	STATE OF ILLINOIS DEPARTMENT OF TRANSPORTATION	SUMMARY OF QUANTITIES		F.A.I. RTE.	SECTION	COUNTY	TOTAL SHEETS	SHEET NO.
PLOT SCALE = 100,0000' / in.	DRAWN - _____	REVISED - _____				57	(38-8)RA-L2	IROQUOIS	17	4
PLOT DATE = 3/17/2022	CHECKED - _____	REVISED - _____		SCALE: _____ SHEET ____ OF ____ SHEETS STA. _____ TO STA. _____		CONTRACT NO. 66M05				
	DATE - _____	REVISED - _____		ILLINOIS FED. AID PROJECT						

LIGHT TOWER IDENTIFICATION:



THE CONTRACTOR SHALL FURNISH AND INSTALL A LIGHT TOWER IDENTIFICATION ON EACH LIGHT TOWER PER SECTION 1069.06 OF THE S.S., AS SHOWN ABOVE, INCIDENTAL TO THE RESPECTIVE LIGHT TOWER PAY ITEM. THE NUMERALS SHALL BE 3" HIGH SERIES "D", BLACK, SCREENED ON SILVER-WHITE TYPE B PRESSURE SENSITIVE REFLECTIVE SHEETING CONFORMING TO THE REQUIREMENTS OF THE APPLICABLE PORTION OF SECTION 1091 OF THE STANDARD SPECIFICATIONS FOR TRAFFIC CONTROL ITEMS. THE NUMERALS SHALL CONFORM TO THE FHWA "STANDARD ALPHABETS FOR HIGHWAY SIGNS".

THE LIGHT TOWER IDENTIFICATION SHALL BE APPLIED TO SIGN BASE MATERIAL AS SPECIFIED IN SECTION 1085.05 OF THE SUPPLEMENTAL SPECIFICATIONS, APPROXIMATELY 7' ABOVE THE ADJACENT PAVEMENT GRADE VISIBLE TO APPROACHING TRAFFIC IN ACCORDANCE WITH HIGHWAY STANDARD 2319.

- I-57 AND SB MAINLINE TOWER FURTHEST TOWER SOUTH IS 50-2
- I-57 AND SB MAINLINE TOWER FURTHEST TOWER NORTH IS 50-3
- I-57 AND NB MAINLINE TOWER FURTHEST TOWER SOUTH IS 50-3
- I-57 AND NB MAINLINE TOWER FURTHEST TOWER NORTH IS 50-2

BILL OF MATERIALS

PAY ITEM	DESCRIPTION	UNIT	QUANTITY
81028720	UNDERGROUND CONDUIT, COILABLE NONMETALLIC CONDUIT, 1" DIA.	FOOT	2,595
81100454	CONDUIT ATTACHED TO STRUCTURE, 1" DIA., STAINLESS STEEL	FOOT	10
81702130	ELECTRIC CABLE IN CONDUIT, 600V (XLP-TYPE USE) 1/C NO. 6	FOOT	9,375
82110009	LUMINAIRE, LED, ROADWAY, OUTPUT DESIGNATION I	EACH	10
82110017	LUMINAIRE, LED, HIGHMAST, OUTPUT DESIGNATION J	EACH	16
82500430	LIGHTING CONTROLLER, WALL MOUNTED, 240VOLT, 100AMP	EACH	2
83503300	LIGHT TOWER, 110 FT. MOUNTING HEIGHT, LUMINAIRE MT. - 4	EACH	4
83700300	LIGHT TOWER FOUNDATION, 48" DIAMETER	FOOT	76.0
84500110	REMOVAL OF LIGHTING CONTROLLER	EACH	2
89502300	REMOVE ELECTRIC CABLE FROM CONDUIT	FOOT	9,375
X1400267	REMOVAL OF LIGHTING LUMINAIRE, NO SALVAGE	EACH	10
X8210402	LUMINAIRE MOUNTING BRACKET - SPECIAL	EACH	10
X8420502	REMOVAL OF LIGHT TOWER, NO SALVAGE	EACH	4
X8420510	REMOVAL OF TOWER FOUNDATION	EACH	4

STATE OF ILLINOIS
DEPARTMENT OF TRANSPORTATION

LIGHT TOWER ID DETAIL

SCALE: _____ SHEET ____ OF ____ SHEETS STA. _____ TO STA. _____

F.A.I. RTE.	SECTION	COUNTY	TOTAL SHEETS	SHEET NO.
57	(38-8)RA-L2	IROQUOIS	17	5
			CONTRACT NO. 66M05	
			ILLINOIS FED. AID PROJECT	

MODEL: Default
 FILE: \\nafe-pw-backend.com\FW\DOT\Documents\DOT_offices\Dir\dir_3\Project\10366\05\CAD\Draws\10366M05-1ht-detail.dgn

USER NAME = pletschr	DESIGNED - _____	REVISED - _____
	DRAWN - _____	REVISED - _____
PLOT SCALE = 100,0000' / in.	CHECKED - _____	REVISED - _____
PLOT DATE = 3/18/2022	DATE - _____	REVISED - _____

MODEL: Default
 FILE NAME: p:\ulldoc\aw_bentley.com\PIV\DOT\Documents\DOT_Offices\Dir\dr_3\Project\I-57\66M05\66M05-rem\light1.dgn



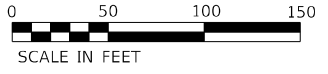
SEE MATCHLINE "A"

LIGHTING LEGEND

- EXISTING LIGHTING UNIT TO REMAIN, REMOVE LUMINAIRE
- EXISTING ELECTRIC CABLE IN CONDUIT TO BE REMOVED (SEE NOTE 1)

NOTES:

1. ELECTRIC CABLES IN EXISTING UNIT DUCT OR CONDUIT SHALL BE REMOVED AND PAID FOR AS "REMOVE ELECTRIC CABLE FROM CONDUIT". THE CONTRACTOR SHALL VERIFY LOCATION OF EXISTING CONDUIT ROUTE.



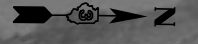
USER NAME = pletschr	DESIGNED -	REVISED -
	DRAWN -	REVISED -
PLOT SCALE = 100,0000 ' / in.	CHECKED -	REVISED -
PLOT DATE = 3/17/2022	DATE -	REVISED -

STATE OF ILLINOIS
DEPARTMENT OF TRANSPORTATION

I-57 NB MAINLINE REST AREA
LIGHTING REMOVAL PLAN

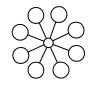
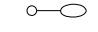

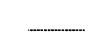
SCALE: SHEET OF SHEETS STA. TO STA.

F.A.I. RTE.	SECTION	COUNTY	TOTAL SHEETS	SHEET NO.
57	(38-8)RA-L2	IROQUOIS	17	6
CONTRACT NO. 66M05				
ILLINOIS FED. AID PROJECT				

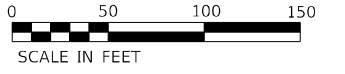


SEE MATCHLINE "A"



- LIGHTING LEGEND**
-  EXISTING HIGH MAST LIGHT TOWER TO BE REMOVED, BREAKDOWN FOUNDATION BELOW GRADE
 -  EXISTING LIGHTING UNIT TO REMAIN, REMOVE LUMINAIRE
 -  EXISTING LIGHTING CONTROL PANEL TO BE REMOVED (SEE NOTE 2)
 -  EXISTING ELECTRIC CABLE IN CONDUIT TO BE REMOVED (SEE NOTE 1)

- NOTES:**
1. ELECTRIC CABLES IN EXISTING UNIT DUCT OR CONDUIT SHALL BE REMOVED AND PAID FOR AS "REMOVE ELECTRIC CABLE FROM CONDUIT". THE CONTRACTOR SHALL VERIFY LOCATION OF EXISTING CONDUIT ROUTE.
 2. THE CONTRACTOR SHALL VERIFY LOCATION OF EXISTING LIGHTING CONTROL PANEL.
 3. EXISTING LIGHT TOWERS TO BE REMOVED SHALL REMAIN UNTIL PROPOSED LIGHTING SYSTEM IS OPERATIONAL.



MODEL: Default
 FILE NAME: p:\projects\66m05\66m05\cadd\data\1\1\project\1\1\66m05\rem\l1m2.dgn

USER NAME = pletschr	DESIGNED -	REVISED -
	DRAWN -	REVISED -
PLOT SCALE = 100,0000 ' / in.	CHECKED -	REVISED -
PLOT DATE = 3/17/2022	DATE -	REVISED -

**STATE OF ILLINOIS
DEPARTMENT OF TRANSPORTATION**

**I-57 NB MAINLINE REST AREA
LIGHTING REMOVAL PLAN**

SCALE: SHEET OF SHEETS STA. TO STA.

F.A.I. RTE.	SECTION	COUNTY	TOTAL SHEETS	SHEET NO.
57	(38-8)RA-L2	IROQUOIS	17	7
CONTRACT NO. 66M05				
ILLINOIS FED. AID PROJECT				



SEE MATCHLINE "B"



LIGHTING LEGEND
 EXISTING HIGH MAST LIGHT TOWER TO BE REMOVED, BREAKDOWN FOUNDATION BELOW GRADE



EXISTING LIGHTING UNIT TO REMAIN, REMOVE LUMINAIRE



EXISTING LIGHTING CONTROL PANEL TO BE REMOVED (SEE NOTE 2)



EXISTING ELECTRIC CABLE IN CONDUIT TO BE REMOVED (SEE NOTE 1)

NOTES:

1. ELECTRIC CABLES IN EXISTING UNIT DUCT OR CONDUIT SHALL BE REMOVED AND PAID FOR AS "REMOVE ELECTRIC CABLE FROM CONDUIT". THE CONTRACTOR SHALL VERIFY LOCATION OF EXISTING CONDUIT ROUTE.
2. THE CONTRACTOR SHALL VERIFY LOCATION OF EXISTING LIGHTING CONTROL PANEL.
3. EXISTING LIGHT TOWERS TO BE REMOVED SHALL REMAIN UNTIL PROPOSED LIGHTING SYSTEM IS OPERATIONAL.



MODEL: Default
 FILE: \\naulc01\pub\lsc\aw_bentley.com\PIV\DOT\Documents\DOT_Offices\Dir\dr: 3\Project\I366M05\CADD\Draw: D366M05-remlight3.dgn

USER NAME = pletschr	DESIGNED -	REVISED -
	DRAWN -	REVISED -
PLOT SCALE = 100,0000 ' / in.	CHECKED -	REVISED -
PLOT DATE = 3/17/2022	DATE -	REVISED -

**STATE OF ILLINOIS
 DEPARTMENT OF TRANSPORTATION**

**I-57 SB MAINLINE REST AREA
 LIGHTING REMOVAL PLAN**

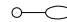
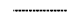
SCALE: SHEET 4 OF SHEETS STA. TO STA.

F.A.I. RTE.	SECTION	COUNTY	TOTAL SHEETS	SHEET NO.
57	(38-8)RA-L2	IROQUOIS	17	8
			CONTRACT NO. 66M05	
		ILLINOIS FED. AID PROJECT		



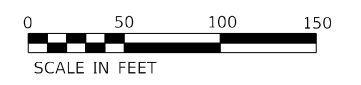
SEE MATCHLINE "B"

LIGHTING LEGEND

-  EXISTING LIGHTING UNIT TO REMAIN, REMOVE LUMINAIRE
-  EXISTING ELECTRIC CABLE IN CONDUIT TO BE REMOVED (SEE NOTE 1)

NOTES:

1. ELECTRIC CABLES IN EXISTING UNIT DUCT OR CONDUIT SHALL BE REMOVED AND PAID FOR AS "REMOVE ELECTRIC CABLE FROM CONDUIT". THE CONTRACTOR SHALL VERIFY LOCATION OF EXISTING CONDUIT ROUTE.



MODEL: Default
 FILE NAME: p:\ulidect-pw-bentley.com\PIV\DOT\Documents\DOT Office\Dir\dir: 3\Project\ID366M05\CADD\Draw: D366M05-rem-light.dgn

USER NAME = pletschr	DESIGNED -	REVISED -
	DRAWN -	REVISED -
PLOT SCALE = 100,0000 ' / in.	CHECKED -	REVISED -
PLOT DATE = 3/17/2022	DATE -	REVISED -

STATE OF ILLINOIS
DEPARTMENT OF TRANSPORTATION

I-57 SB MAINLINE REST AREA
LIGHTING REMOVAL PLAN

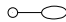


SCALE: SHEET OF SHEETS STA. TO STA.

F.A.I. RTE.	SECTION	COUNTY	TOTAL SHEETS	SHEET NO.
57	(38-8)RA-L2	IROQUOIS	17	9
CONTRACT NO. 66M05				
ILLINOIS FED. AID PROJECT				



SEE MATCHLINE "A"

LIGHTING LEGEND

-  EXISTING LIGHTING UNIT TO REMAIN WITH NEW 240V LED ROADWAY LUMINAIRE (SEE NOTE 1)
-  PROPOSED 2-1C NO.6, 1/2" NO.6 GROUND, (XLP-TYPE USE), IN 1" DIA. COILABLE NONMETALLIC CONDUIT
-  EXISTING CONDUIT TO REMAIN (SEE NOTE 3)

NOTES:

1. A LUMINAIRE BRACKET SHALL BE INSTALLED AND PAID FOR AS "LUMINAIRE MOUNTING BRACKET - SPECIAL".
2. THE CONTRACTOR SHALL INSTALL ROADWAY LUMINAIRES AT 0 DEGREES HORIZONTAL TO GRADE.
3. THE CONTRACTOR SHALL VERIFY LOCATION OF EXISTING CONDUIT ROUTE.
4. THE CONTRACTOR SHALL INTERCEPT EXISTING CONDUIT WITH NEW 1" DIA. COILABLE NONMETALLIC CONDUIT. INSTALL NEW CABLE FROM PROPOSED HIGH MAST LIGHT TOWER TO EXISTING LIGHT POLE. THE COST OF THIS WORK SHALL BE INCLUDED IN THE COST OF THE ASSOCIATED ELECTRIC CABLE.



MODEL: Default
 FILE NAME: p:\ultra-cw-bea\p\p\DOT\Documents\DOT Office\Drawings\Project\66M05\CAD\Drawings\66M05-High1.dgn

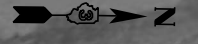
USER NAME = pletschr	DESIGNED -	REVISED -
	DRAWN -	REVISED -
PLOT SCALE = 100,0000' / in.	CHECKED -	REVISED -
PLOT DATE = 3/17/2022	DATE -	REVISED -

**STATE OF ILLINOIS
DEPARTMENT OF TRANSPORTATION**

**I-57 NB MAINLINE REST AREA
PROPOSED LIGHTING PLAN**

SCALE: SHEET OF SHEETS STA. TO STA.

F.A.I. RTE.	SECTION	COUNTY	TOTAL SHEETS	SHEET NO.
57	(38-8)RA-L2	IROQUOIS	17	10
CONTRACT NO. 66M05				
ILLINOIS FED. AID PROJECT				



SEE MATCHLINE "A"

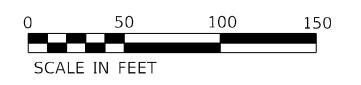


LIGHTING LEGEND

- PROPOSED GALVANIZED STEEL HIGH MAST LIGHT TOWER, 110 FT. M.H. ON 48" DIA. CONCRETE FOUNDATION, WITH 6 LED LUMINAIRES, 240V, LUMINAIRE AIMING AS SHOWN ON PLAN
- EXISTING LIGHTING UNIT TO REMAIN WITH NEW 240V LED ROADWAY LUMINAIRE (SEE NOTE 1)
- PROPOSED 2-1C NO.6, 1/C NO.6 GROUND, (XLP-TYPE USE), IN 1" DIA. COILABLE NONMETALLIC CONDUIT
- PROPOSED LIGHTING CONTROLLER, WALL MOUNTED, 120/240 VOLT, 100 AMP, SINGLE PHASE, 3-WIRE (SEE SHEET 11)
- EXISTING CONDUIT TO REMAIN (SEE NOTE 3)

NOTES:

1. A LUMINAIRE BRACKET SHALL BE INSTALLED AND PAID FOR AS "LUMINAIRE MOUNTING BRACKET - SPECIAL".
2. THE CONTRACTOR SHALL INSTALL ROADWAY AND HIGH MAST LUMINAIRES AT 0 DEGREE HORIZONTAL TO GRADE.
3. THE CONTRACTOR SHALL VERIFY LOCATION OF EXISTING CONDUIT ROUTE.
4. PROPOSED HIGH MAST LIGHT TOWER SHALL BE SET 5' BEHIND SIDEWALK AND 10' NORTH OF EXISTING HIGH MAST LIGHT TOWER TO BE REMOVED.
5. THE CONTRACTOR SHALL INTERCEPT EXISTING CONDUIT WITH NEW 1" DIA. COILABLE NONMETALLIC CONDUIT. INSTALL NEW CABLE FROM PROPOSED HIGH MAST LIGHT TOWER TO PROPOSED LIGHTING CONTROLLER. THE COST OF THIS WORK SHALL BE INCLUDED IN THE COST OF THE ASSOCIATED ELECTRIC CABLE.
6. THE CONTRACTOR SHALL INTERCEPT EXISTING CONDUIT WITH NEW 1" DIA. COILABLE NONMETALLIC CONDUIT. INSTALL NEW CABLE FROM PROPOSED HIGH MAST LIGHT TOWER TO EXISTING LIGHT POLE. THE COST OF THIS WORK SHALL BE INCLUDED IN THE COST OF THE ASSOCIATED ELECTRIC CABLE.



MODEL: Default
 FILE NAME: p:\projects\new\bea\pdx.com\PROJECTS\Documents\DOT Office\Drawings\I-57\66M05-high2.dgn
 PROJECT: I-57 NB Mainline Rest Area

USER NAME = pletschr	DESIGNED -	REVISED -
	DRAWN -	REVISED -
PLOT SCALE = 100,0000' / in.	CHECKED -	REVISED -
PLOT DATE = 3/17/2022	DATE -	REVISED -

**STATE OF ILLINOIS
DEPARTMENT OF TRANSPORTATION**

**I-57 NB MAINLINE REST AREA
PROPOSED LIGHTING PLAN**

SCALE: SHEET OF SHEETS STA. TO STA.

F.A.I. RTE.	SECTION	COUNTY	TOTAL SHEETS	SHEET NO.
57	(38-8)RA-L2	IROQUOIS	17	11
CONTRACT NO. 66M05				
ILLINOIS FED. AID PROJECT				



SEE MATCHLINE "B"

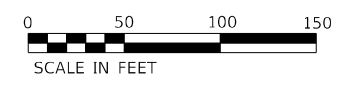


LIGHTING LEGEND

- PROPOSED GALVANIZED STEEL HIGH MAST LIGHT TOWER, 110 FT. M.H. ON 48" DIA. CONCRETE FOUNDATION, WITH 6 LED LUMINAIRES, 240V, LUMINAIRE AIMING AS SHOWN ON PLAN
- EXISTING LIGHTING UNIT TO REMAIN WITH NEW 240V LED ROADWAY LUMINAIRE (SEE NOTE 1)
- PROPOSED 2-1C NO.6, 1/C NO.6 GROUND, (XLP-TYPE USE), IN 1" DIA. COILABLE NONMETALLIC CONDUIT
- PROPOSED LIGHTING CONTROLLER, WALL MOUNTED, 120/240 VOLT, 100 AMP, SINGLE PHASE, 3-WIRE (SEE SHEET 11)
- EXISTING CONDUIT TO REMAIN (SEE NOTE 3)

NOTES:

1. A LUMINAIRE BRACKET SHALL BE INSTALLED AND PAID FOR AS "LUMINAIRE MOUNTING BRACKET - SPECIAL".
2. THE CONTRACTOR SHALL INSTALL ROADWAY AND HIGH MAST LUMINAIRES AT 0 DEGREE HORIZONTAL TO GRADE.
3. THE CONTRACTOR SHALL VERIFY LOCATION OF EXISTING CONDUIT ROUTE.
4. PROPOSED HIGH MAST LIGHT TOWER SHALL BE SET 5' BEHIND SIDEWALK AND 10' SOUTH OF EXISTING HIGH MAST LIGHT TOWER TO BE REMOVED.
5. THE CONTRACTOR SHALL INTERCEPT EXISTING CONDUIT WITH NEW 1" DIA. COILABLE NONMETALLIC CONDUIT. INSTALL NEW CABLE FROM PROPOSED HIGH MAST LIGHT TOWER TO PROPOSED LIGHTING CONTROLLER. THE COST OF THIS WORK SHALL BE INCLUDED IN THE COST OF THE ASSOCIATED ELECTRIC CABLE.
6. THE CONTRACTOR SHALL INTERCEPT EXISTING CONDUIT WITH NEW 1" DIA. COILABLE NONMETALLIC CONDUIT. INSTALL NEW CABLE FROM PROPOSED HIGH MAST LIGHT TOWER TO EXISTING LIGHT POLE. THE COST OF THIS WORK SHALL BE INCLUDED IN THE COST OF THE ASSOCIATED ELECTRIC CABLE.



MODEL: Default
 FILE: Mainline_RestArea.dwg
 FILEPATH: \\p:\u0000\paw\bea\paw.com\paw\DOT\Documents\DOT - Office\Dir\Dir: 3\Project\10366405\CADD\Draw: D366405-high3.dwg

USER NAME = pletschr	DESIGNED -	REVISED -
	DRAWN -	REVISED -
PLOT SCALE = 100,0000' / in.	CHECKED -	REVISED -
PLOT DATE = 3/17/2022	DATE -	REVISED -

**STATE OF ILLINOIS
DEPARTMENT OF TRANSPORTATION**

**I-57 SB MAINLINE REST AREA
PROPOSED LIGHTING PLAN**

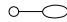
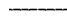

SCALE: SHEET OF SHEETS STA. TO STA.

F.A.I. RTE.	SECTION	COUNTY	TOTAL SHEETS	SHEET NO.
57	(38-8)RA-L2	IROQUOIS	17	12
CONTRACT NO. 66M05				
ILLINOIS FED. AID PROJECT				



SEE MATCHLINE "B"

LIGHTING LEGEND

-  EXISTING LIGHTING UNIT TO REMAIN WITH NEW 240V LED ROADWAY LUMINAIRE (SEE NOTE 1)
-  PROPOSED 2-1C NO.6, 1/C NO.6 GROUND, (XLP-TYPE USE), IN 1" DIA. COILABLE NONMETALLIC CONDUIT
-  EXISTING CONDUIT TO REMAIN (SEE NOTE 3)

NOTES:

1. A LUMINAIRE BRACKET SHALL BE INSTALLED AND PAID FOR AS "LUMINAIRE MOUNTING BRACKET - SPECIAL".
2. THE CONTRACTOR SHALL INSTALL ROADWAY LUMINAIRES AT 0 DEGRESS HORIZONTAL TO GRADE.
3. THE CONTRACTOR SHALL VERIFY LOCATION OF EXISTING CONDUIT ROUTE.
4. THE CONTRACTOR SHALL INTERCEPT EXISTING CONDUIT WITH NEW 1" DIA. COILABLE NONMETALLIC CONDUIT. INSTALL NEW CABLE FROM PROPOSED HIGH MAST LIGHT TOWER TO EXISTING LIGHT POLE. THE COST OF THIS WORK SHALL BE INCLUDED IN THE COST OF THE ASSOCIATED ELECTRIC CABLE.



MODEL: Default
 FILE NAME: p:\ultra-cw-bea\efy.com\PIV\DOT\Documents\DOT Office\Dir\efy_3\Project\66M05\CADD\Draws\66M05-high4.dgn

USER NAME = pletschr	DESIGNED -	REVISED -
	DRAWN -	REVISED -
PLOT SCALE = 100,0000' / in.	CHECKED -	REVISED -
PLOT DATE = 3/17/2022	DATE -	REVISED -

STATE OF ILLINOIS
DEPARTMENT OF TRANSPORTATION

I-57 SB MAINLINE REST AREA
PROPOSED LIGHTING PLAN

SCALE: SHEET OF SHEETS STA. TO STA.

F.A.I. RTE.	SECTION	COUNTY	TOTAL SHEETS	SHEET NO.
57	(38-8)RA-L2	IROQUOIS	17	13
ILLINOIS FED. AID PROJECT			CONTRACT NO. 66M05	

LUMINAIRE PERFORMANCE TABLE
LUMINAIRE, LED, ROADWAY, OUTPUT DESIGNATION I

Project

Date	Contract Number	Section Number	County
01-25-2022	66M05		IROQUOIS

Marked Route Number	Municipality
I-57 NB/SB MAINLINE REST AREA	LODA TOWNSHIP

Roadway

Lane Width	# of Lanes	Median Width	I.E.S Surface Classification	O-Zero Value
12 ft	3	N/A	R3	0.07

Structure

Mounting Height	Arm Length	Set Back	Number of Luminaires (Highmast & Sign Lighting Only)
50 ft	1 ft	30 ft	N/A

Luminaire

Description	I.E.S. Transverse Distribution	I.E.S. Lateral Distribution
LUMINAIRE, LED, ROADWAY, OUTPUT DESIGNATION I	TYPE III	SHORT/MEDIUM

Total Light Loss Factor (LLF)	BUG Rating	Shields	Dimming Protocol
0.7	U = 0	N/A	0-10V

Layout

Spacing (to Nearest 5 Ft) Configuration (Opposite, Staggered, 1 Sided, or Median)
300 ft SINGLE SIDED

Performance

Average Illuminance, E_{AVE} (fc)	Uniformity Ratio, E_{AVE}/E_{MIN}		
≥ 0.7	$\leq 4.0:1$		
Average Luminance, L_{AVE} (cd/m ²)	Uniformity Ratio, L_{AVE}/L_{MIN}	Uniformity Ratio, L_{MAX}/L_{MIN}	Veiling Luminance Ratio, L_V/L_{MIN}
N/A	N/A	N/A	≤ 0.4

Light Trespass

Distance to ROW (behind pole)	Max. Horizontal Illuminance at ROW, E_H	Max. Vertical Illuminance at ROW, E_V
80 ft	0.2 fc @ LLF = 1.0	0.2 fc @ LLF = 1.0 and 3 ft above grade

Notes

- Set Back is from Edge of Pavement (white line) except for sign luminaires when it is vertical and horizontal distance from the sign to the luminaire.
- Lighting calculations shall be performed with all luminaires oriented toward and perpendicular to roadway.
- Total Light Loss Factor (LLF) = the product of "Lumen Maintenance" (LLD) = 0.9, "Dirt Depreciation" (LDD) = 0.8, and "Equipment Factors" (EF) = 0.95.
- Performance requirements shall be the minimum acceptable standards of photometric performance for the luminaire, based on the given conditions above.
- Lighting calculations shall be performed in one direction only.
- Compliance with performance criteria shall be held to one significant digit.
- Initial lumens of the proposed luminaire may vary from the values specified in the table given in Article 1067.06 of the BDE Special Provision Luminaire, LED.

LUMINAIRE PERFORMANCE TABLE
LUMINAIRE, LED, HIGHMAST, OUTPUT DESIGNATION I

Project

Date	Contract Number	Section Number	County
01-25-2022	66M05		IROQUOIS

Marked Route Number	Municipality
I-57 NB/SB MAINLINE REST AREA	LODA TOWNSHIP

Roadway

Lane Width	# of Lanes	Median Width	I.E.S Surface Classification	O-Zero Value
12 ft	11	N/A	R3	0.07

Structure

Mounting Height	Arm Length	Set Back	Number of Luminaires (Highmast & Sign Lighting Only)
110 ft	4 ft	20 ft	6 @ 45 degrees, same direction

Luminaire

Description	I.E.S. Transverse Distribution	I.E.S. Lateral Distribution
LUMINAIRE, LED, HIGHMAST, OUTPUT DESIGNATION I	TYPE II	SHORT/MEDIUM

Total Light Loss Factor (LLF)	BUG Rating	Shields	Dimming Protocol
0.7	U = 0	N/A	0-10V

Layout

Spacing (to Nearest 5 Ft) Configuration (Opposite, Staggered, 1 Sided, or Median)
480 ft SINGLE SIDED

Performance

Average Illuminance, E_{AVE} (fc)	Uniformity Ratio, E_{AVE}/E_{MIN}		
≥ 1.5	$\leq 4.0:1$		
Average Luminance, L_{AVE} (cd/m ²)	Uniformity Ratio, L_{AVE}/L_{MIN}	Uniformity Ratio, L_{MAX}/L_{MIN}	Veiling Luminance Ratio, L_V/L_{MIN}
N/A	N/A	N/A	≤ 0.3

Light Trespass

Distance to ROW (in front of pole)	Max. Horizontal Illuminance at ROW, E_H	Max. Vertical Illuminance at ROW, E_V
415 ft	0.2 fc @ LLF = 1.0	0.2 fc @ LLF = 1.0 and 3 ft above grade

Notes

- Set Back is from Edge of Pavement (white line) except for sign luminaires when it is vertical and horizontal distance from the sign to the luminaire.
- Lighting calculations shall be performed with all luminaires oriented toward and perpendicular to roadway.
- Total Light Loss Factor (LLF) = the product of "Lumen Maintenance" (LLD) = 0.9, "Dirt Depreciation" (LDD) = 0.8, and "Equipment Factors" (EF) = 0.95.
- Performance requirements shall be the minimum acceptable standards of photometric performance for the luminaire, based on the given conditions above.
- Lighting calculations shall be performed in one direction only.
- Compliance with performance criteria shall be held to one significant digit.
- Initial lumens of the proposed luminaire may vary from the values specified in the table given in Article 1067.06 of the BDE Special Provision Luminaire, LED.



MODEL: Default
 FILE: \\bmrp-pxw-bentley.com\FW\DOT\Documents\DOT Office\Dir\dr: 3\Project\10366405\CADD\10366405\Highmast1.dgn

USER NAME = pletschr	DESIGNED -	REVISED -
	DRAWN -	REVISED -
PLOT SCALE = 100,0000' / in.	CHECKED -	REVISED -
PLOT DATE = 3/17/2022	DATE -	REVISED -

STATE OF ILLINOIS
DEPARTMENT OF TRANSPORTATION

I-57 NB/SB MAINLINE REST AREA
LUMINAIRE PERFORMANCE TABLE

SCALE:	SHEET	OF	SHEETS	STA.	TO	STA.
--------	-------	----	--------	------	----	------

F.A.I. RTE.	SECTION	COUNTY	TOTAL SHEETS	SHEET NO.
57	(38-8)RA-L2	IROQUOIS	17	14
			CONTRACT NO. 66M05	
		ILLINOIS FED. AID PROJECT		

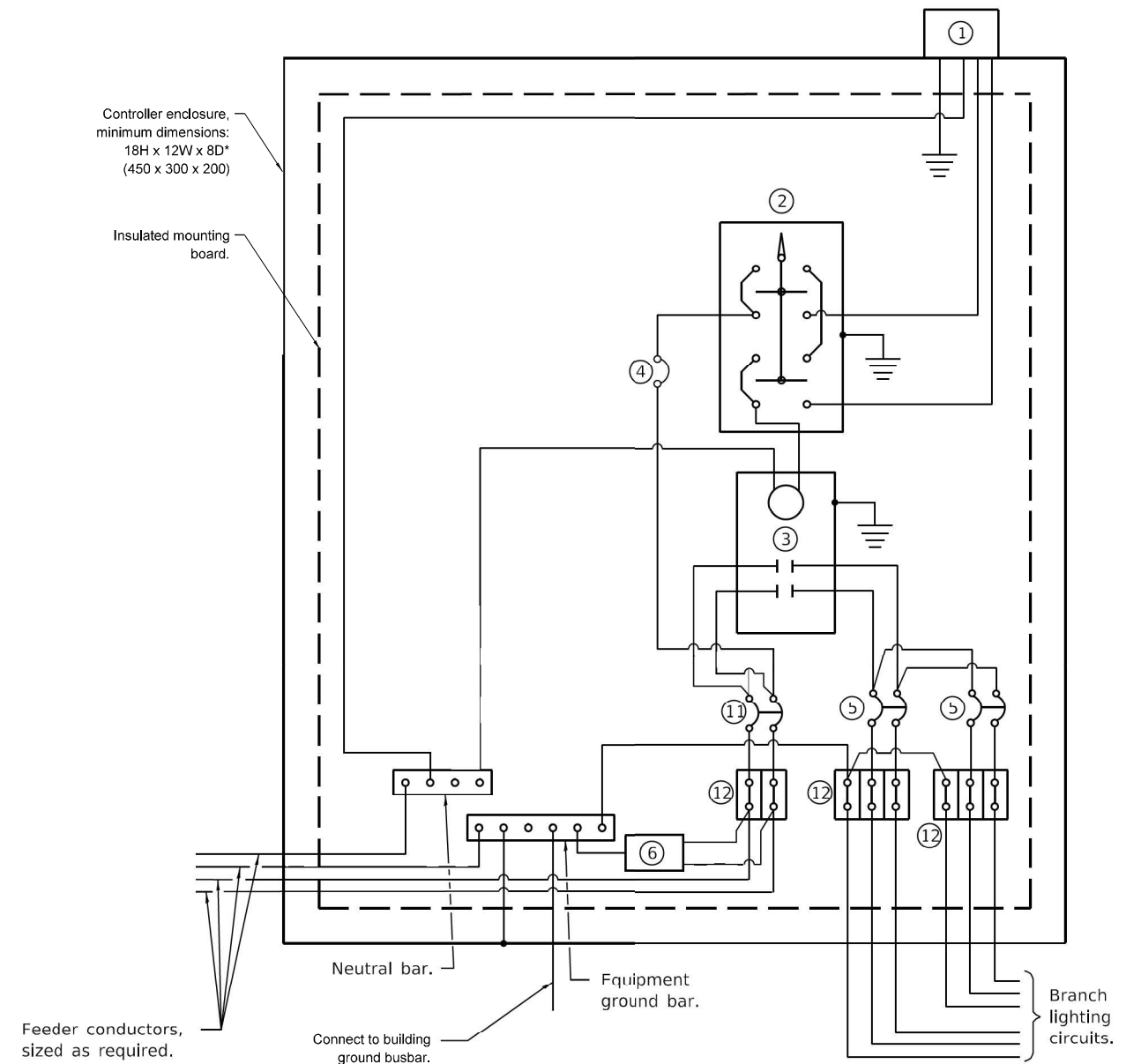
NOTES:

1. THE CONTRACTOR SHALL INTERCEPT EXISTING CONDUIT ATTACHED TO STRUCTURE WITH NEW CONDUIT ATTACHED TO STRUCTURE AND ROUTE NEW CONDUIT TO NEW LIGHTING CONTROLLER IN MECHANICAL ROOM. ROUTE NEW FEEDER CONDUCTORS THROUGH CONDUIT FROM EXISTING MAIN BREAKER TO NEW LIGHTING CONTROLLER. ROUTE NEW BRANCH CIRCUIT CONDUCTORS THROUGH CONDUIT FROM NEW LIGHTING CONTROLLER TO NEW HIGH MAST LIGHT TOWERS. REMOVAL OF EXISTING CONDUIT ATTACHED TO STRUCTURE SHALL BE INCLUDED IN COST OF THE LIGHTING CONTROL PANEL REMOVAL.
2. THE EXISTING FEEDER CONDUCTORS AND CONDUIT SHALL BE REPLACED TO MATCH EXISTING SIZE (CONDUIT TO BE STAINLESS STEEL). THIS WORK SHALL BE INCLUDED IN THE COST OF THE NEW LIGHTING CONTROLLER.
3. THE CONTRACTOR SHALL REPLACE EXISTING PHOTOCELL WITH NEW PHOTOCELL, AND CONNECT NEW PHOTOCELL TO NEW LIGHTING CONTROLLER THROUGH EXISTING CONDUIT. THIS WORK SHALL BE INCLUDED IN THE COST OF THE NEW LIGHTING CONTROLLER.

EXISTING CONTROL PANEL TO BE REMOVED AND REPLACED WITH NEW WALL MOUNTED LIGHTING CONTROLLER IN MECHANICAL ROOM



SEE NOTE 1

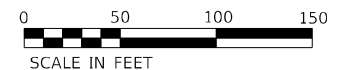


CONTROL SCHEMATIC

- ① Photocell with integral surge arrester.
- ② HAND-OFF-AUTO selector switch.
- ③ 100 amp*, electrically held contactor.
- ④ 15 amp, 1-pole circuit breaker.
- ⑤ Two 70 amp, 2-pole circuit breakers (shown) and one 30 amp, 2-pole circuit breaker (not shown).
- ⑥ Surge arrester.
- ⑪ 100 amp*, 2-pole circuit breaker.
- ⑫ Terminal block sized for conductors as shown on plans.

* Size larger as needed.

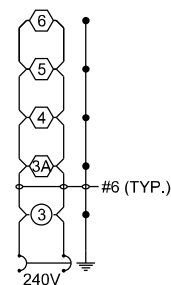
All dimensions are in inches (millimeters) unless otherwise shown.



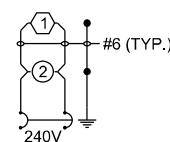
NOTES:

1. ALL NECESSARY REVISIONS TO THE WIRING SHOWN ON THIS SHEET SHALL BE MADE AT NO ADDITIONAL COST TO THE DEPARTMENT AND TO THE SATISFACTION OF THE ENGINEER.

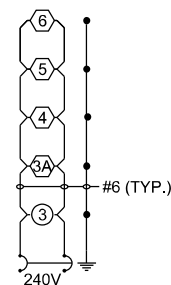
- ⬡ PROPOSED ROADWAY LUMINAIRE, LED
- PROPOSED LIGHT TOWER (6 LED LUMINAIRES)
- ⚡ GROUND ROD



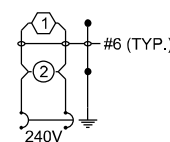
2 POLE 70 AMP BREAKER



2 POLE 70 AMP BREAKER



2 POLE 70 AMP BREAKER



2 POLE 70 AMP BREAKER

PROPOSED I-57 NB LIGHTING CONTROLLER, 240V

PROPOSED I-57 SB LIGHTING CONTROLLER, 240V

MODEL: Default
FILE NAME: p:\subcontract\aw_bentley.com\p\INDOT\Documents\INDOT_offices\Dir\rdt_3\Project\1D366M05\CADD\Draws\1D366M05-high\rdt2.dgn

USER NAME = pletschr	DESIGNED -	REVISIONS
PLOT SCALE = 100,0000' / in.	DRAWN -	REVISIONS
PLOT DATE = 3/17/2022	CHECKED -	REVISIONS
	DATE -	REVISIONS

**STATE OF ILLINOIS
DEPARTMENT OF TRANSPORTATION**

**I-57 NB/SB MAINLINE REST AREA
ELECTRICAL DETAILS**

SCALE: SHEET OF SHEETS STA. TO STA.

F.A.I. RTE.	SECTION	COUNTY	TOTAL SHEETS	SHEET NO.
57	(38-8)RA-L2	IROQUOIS	17	15
			CONTRACT NO. 66M05	
ILLINOIS FED. AID PROJECT				



Illinois Department of Transportation
Division of Highways
Illinois Department of Transportation

SOIL BORING LOG

Date 10/12/21

ROUTE FAI 57 (I-57) DESCRIPTION I-57 - Buckley Southbound Rest Area LOGGED BY Larry Myers

SECTION (38-8)RA-L2 LOCATION SE 1/4, SEC. 4, TWP. 24, RNG. 10, 3rd PM
Latitude 40.551195, Longitude -88.060423

COUNTY Iroquois DRILLING METHOD Hollow Stem Auger HAMMER TYPE CME Automatic

STRUCT. NO. Station	D E P T H S	B L O W S	U C S Qu	M O I S T	Surface Water Elev. _____ ft	Stream Bed Elev. _____ ft	D E P T H S	B L O W S	U C S Qu	M O I S T
BORING NO. 1 (N Tower) Station 1383+90 Offset 283.0 ft Rt. Ground Surface Elev. 730.99 ft										
Augered Black Silty Clay Loam and Brown Silty Clay Loam Till Fill and Black Silty Clay Loam Topsoil										
Very Stiff Gray and Brown Silty Clay/Silty Clay Loam										
Hard Brownish Gray Silty Clay Till										
End of Boring										

The Unconfined Compressive Strength (UCS) Failure Mode is indicated by (B-Bulge, S-Shear, P-Penetrometer)
The SPT (N value) is the sum of the last two blow values in each sampling zone (AASHTO T206)

BBS, form 137 (Rev. 8-99)



Illinois Department of Transportation
Division of Highways
Illinois Department of Transportation

SOIL BORING LOG

Date 10/12/21

ROUTE FAI 57 (I-57) DESCRIPTION I-57 - Buckley Southbound Rest Area LOGGED BY Larry Myers

SECTION (38-8)RA-L2 LOCATION NE 1/4, SEC. 9, TWP. 24, RNG. 10, 3rd PM
Latitude 40.549834, Longitude -88.060973

COUNTY Iroquois DRILLING METHOD Hollow Stem Auger HAMMER TYPE CME Automatic

STRUCT. NO. Station	D E P T H S	B L O W S	U C S Qu	M O I S T	Surface Water Elev. _____ ft	Stream Bed Elev. _____ ft	D E P T H S	B L O W S	U C S Qu	M O I S T
BORING NO. 2 (S Tower) Station 1389+30 Offset 298.0 ft Rt. Ground Surface Elev. 731.92 ft										
Augered Black Silty Clay Loam Fill with Large Concrete Debris and Brown Silty Clay										
Very Stiff Brown and Gray Silty Clay Loess										
Very Stiff Gray and Brown Silty Clay Till										
Hard Brownish Gray Silty Clay Till										
Hard Gray Silty Clay Loam Till										

The Unconfined Compressive Strength (UCS) Failure Mode is indicated by (B-Bulge, S-Shear, P-Penetrometer)
The SPT (N value) is the sum of the last two blow values in each sampling zone (AASHTO T206)

BBS, form 137 (Rev. 8-99)

MODEL: Default
FILE: I:\MAIL\paul@illdot.gov\beefly.com\FW\DOT\Documents\DOT Office\Dir\drct_3\Project\3866\05\CADD\BBS\3866M05-shr-detail-1.dgn

USER NAME = pletschr	DESIGNED - _____	REVISED - _____
DRAWN - _____	REVISIONS - _____	
PLOT SCALE = 100,0000' / in.	CHECKED - _____	REVISIONS - _____
PLOT DATE = 3/17/2022	DATE - _____	REVISIONS - _____

**STATE OF ILLINOIS
DEPARTMENT OF TRANSPORTATION**

SOIL BORINGS

SCALE: _____ SHEET ____ OF ____ SHEETS STA. _____ TO STA. _____

F.A.I. RTE. 57	SECTION (38-8)RA-L2	COUNTY IROQUOIS	TOTAL SHEETS 17	SHEET NO. 16
CONTRACT NO. 66M05			ILLINOIS FED. AID PROJECT	



Illinois Department of Transportation
Division of Highways
Illinois Department of Transportation

SOIL BORING LOG

Page 1 of 1

Date 10/13/21

ROUTE FA1 57 (I-57) DESCRIPTION I-57 - Buckley Northbound Rest Area LOGGED BY Larry Myers

SECTION (38-8)RA-L2 LOCATION SE 1/4 SEC. 9, TWP. 24, RNG. 10, 3rd PM, Latitude 40.560555, Longitude -88.061273

COUNTY Iroquois DRILLING METHOD Hollow Stem Auger HAMMER TYPE CME Automatic

STRUCT. NO.	DEPTH	BULGE	SHEAR	UNCONSOLIDATED	MATERIAL	Surface Water Elev.	Stream Bed Elev.	DEPTH	BULGE	SHEAR	MATERIAL
Station	(ft)	(/6")	(tsf)	(%)		ft	ft	(ft)	(/6")	(tsf)	(%)
BORING NO. 3 (S Tower)											
Station 1428+06											
Offset 284.0 ft Lt.											
Ground Surface Elev. 720.28 ft											
Augered Black Silty Clay Loam Fill, Topsoil, Brown Silty Clay											
	717.78										
Very Stiff to Hard Brown and Gray Silty Clay Till		3							5	5.1	19
		4	3.0	27					7	B	
		5	P						8	B	19
		4							5		
		4	3.5	20					6	4.2	18
		7	S						7	B	
							693.78				
End of Boring											
		5									
		6	4.1	21							
		9	S								
710.78											
Hard Grayish Brown Silty Clay Till		5									
		7	7.8	17							
		9	S								
		5									
		7	7.2	18							
		9	S								
		5									
		8	8.0	19							
		12	S								
		5									
		6	6.9	18							
		11	S								
700.78											
Hard Gray Silty Clay Loam Till											

The Unconfined Compressive Strength (UCS) Failure Mode is indicated by (B-Bulge, S-Shear, P-Penetrometer)
The SPT (N value) is the sum of the last two blow values in each sampling zone (AASHTO T206)
BBS, form 137 (Rev. 8-99)



Illinois Department of Transportation
Division of Highways
Illinois Department of Transportation

SOIL BORING LOG

Page 1 of 1

Date 10/13/21

ROUTE FA1 57 (I-57) DESCRIPTION I-57 - Buckley Northbound Rest Area LOGGED BY Larry Myers

SECTION (38-8)RA-L2 LOCATION SW 1/4 SEC. 10, TWP. 24, RNG. 10, 3rd PM, Latitude 40.561982, Longitude -88.061245

COUNTY Iroquois DRILLING METHOD Hollow Stem Auger HAMMER TYPE CME Automatic

STRUCT. NO.	DEPTH	BULGE	SHEAR	UNCONSOLIDATED	MATERIAL	Surface Water Elev.	Stream Bed Elev.	DEPTH	BULGE	SHEAR	MATERIAL
Station	(ft)	(/6")	(tsf)	(%)		ft	ft	(ft)	(/6")	(tsf)	(%)
BORING NO. 4 (N Tower)											
Station 1423+00											
Offset 298.0 ft Lt.											
Ground Surface Elev. 719.58 ft											
Augered Black Silty Clay Loam Fill with Concrete Debris, Brown Silty Clay											
	717.08										
Very Stiff to Hard Brown and Gray Silty Clay Till		3							4	4.7	18
		3	3.0	20					7	B	
		5	P						4		
									6	4.1	16
									7	B	
		5							5		
		6	4.7	18					7	4.3	18
		9	S						7	B	
							693.08				
End of Boring											
		7									
		8	10.3	18							
		13	S								
		7									
		9	9.2	18							
		12	S								
		7									
		9	8.1	19							
		10	S								
		5									
		5	7.4	19							
		9	S								
702.58											
Hard Gray Silty Clay Loam Till											
		4									
		5	5.4	19							
		9	S								

The Unconfined Compressive Strength (UCS) Failure Mode is indicated by (B-Bulge, S-Shear, P-Penetrometer)
The SPT (N value) is the sum of the last two blow values in each sampling zone (AASHTO T206)
BBS, form 137 (Rev. 8-99)

MODEL: Default
FILE: M:\MIS_P\Subsect-new-beadley.com\FW\DOT\Documents\DOT\Office\Dir\strc_3\Project\3D366M05\CADD\3D\3D66M05-shr-detail.dgn

USER NAME = pletschr	DESIGNED - _____	REVISED - _____	STATE OF ILLINOIS DEPARTMENT OF TRANSPORTATION	SOIL BORINGS		F.A.I. RTE. 57	SECTION (38-8)RA-L2	COUNTY IROQUOIS	TOTAL SHEETS 17	SHEET NO. 17	
DRAWN - _____	REVISED - _____	SCALE: _____ SHEET ____ OF ____ SHEETS STA. _____ TO STA. _____		CONTRACT NO. 66M05							
PLOT SCALE = 100,0000' / in.	CHECKED - _____	REVISED - _____		ILLINOIS FED. AID PROJECT							
PLOT DATE = 3/17/2022	DATE - _____	REVISED - _____									