

STATE OF ILLINOIS  
DEPARTMENT OF TRANSPORTATION

F.A.I. RTE.	SECTION	COUNTY	TOTAL SHEETS	SHEET NO.
57	(10,27-38&1)PP	FORD	9	1
		ILLINOIS	CONTRACT NO. 66M60	

**INDEX OF SHEETS**

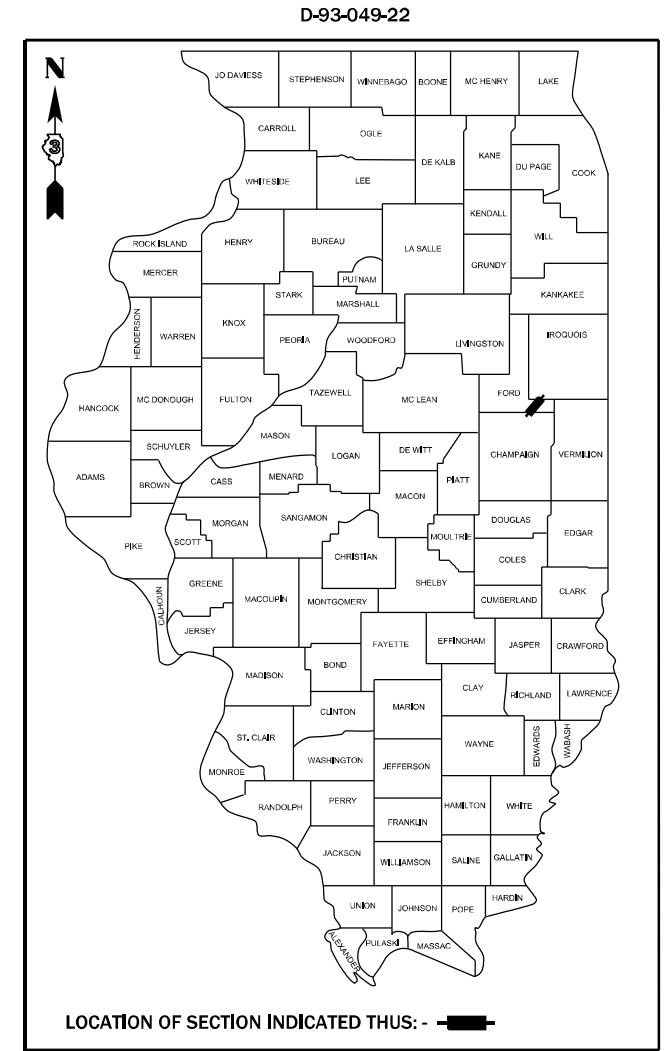
1. COVER SHEET
2. GENERAL NOTES
- 3 - 4. SUMMARY OF QUANTITIES
5. TYPICAL
6. SCHEDULES
7. TRAFFIC CONTROL AND PROTECTION, STANDARD 701400
8. CLASS A PATCHING DETAILS
9. TYPICAL PAVEMENT MARKING

**HIGHWAY STANDARDS**

- |           |   |
|-----------|---|
| 000001-08 | STANDARD SYMBOLS, ABBREVIATIONS AND PATTERNS                                  |
| 001001-02 | AREAS OF REINFORCEMENT BARS   |
| 001006    | DECIMAL OF AN INCH AND OF A FOOT  |
| 421001-03 | BAR REINFORCEMENT FOR CRC PAVEMENT  |
| 421201-07 | 24' CRC PAVEMENT (WITH LUG SYSTEM)  |
| 701101-05 | OFF-ROAD OPERATIONS, MULTILANE, 15' TO 24" FROM PAVEMENT EDGE                 |
| 701106-02 | OFF-ROAD OPERATIONS, MULTILANE, MORE THAN 15' AWAY                            |
| 701401-13 | LANE CLOSURE, FREEWAY/EXPRESSWAY  |
| 701426-09 | LANE CLOSURE, MULTILANE INTERMITTENT OR MOVING OPERATION, FOR SPEEDS ≥ 45 MPH |
| 701427-05 | LANE CLOSURE, MULTILANE INTERMITTENT OR MOVING OPERATION, FOR SPEEDS ≤ 40 MPH |
| 701428-01 | TRAFFIC CONTROL, SETUP AND REMOVAL, FREEWAY/EXPRESSWAY                        |
| 701901-08 | TRAFFIC CONTROL DEVICES   |
| 701400-11 | APPROACH TO LANE CLOSURE, FREEWAY/EXPRESSWAY                                  |
| 701411-09 | LANE CLOSURE, MULTILANE, AT ENTRANCE OR EXIT RAMP, FOR SPEEDS >= 45 MPH       |

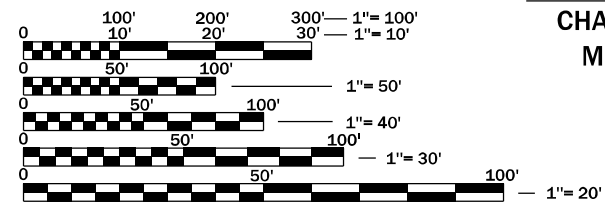
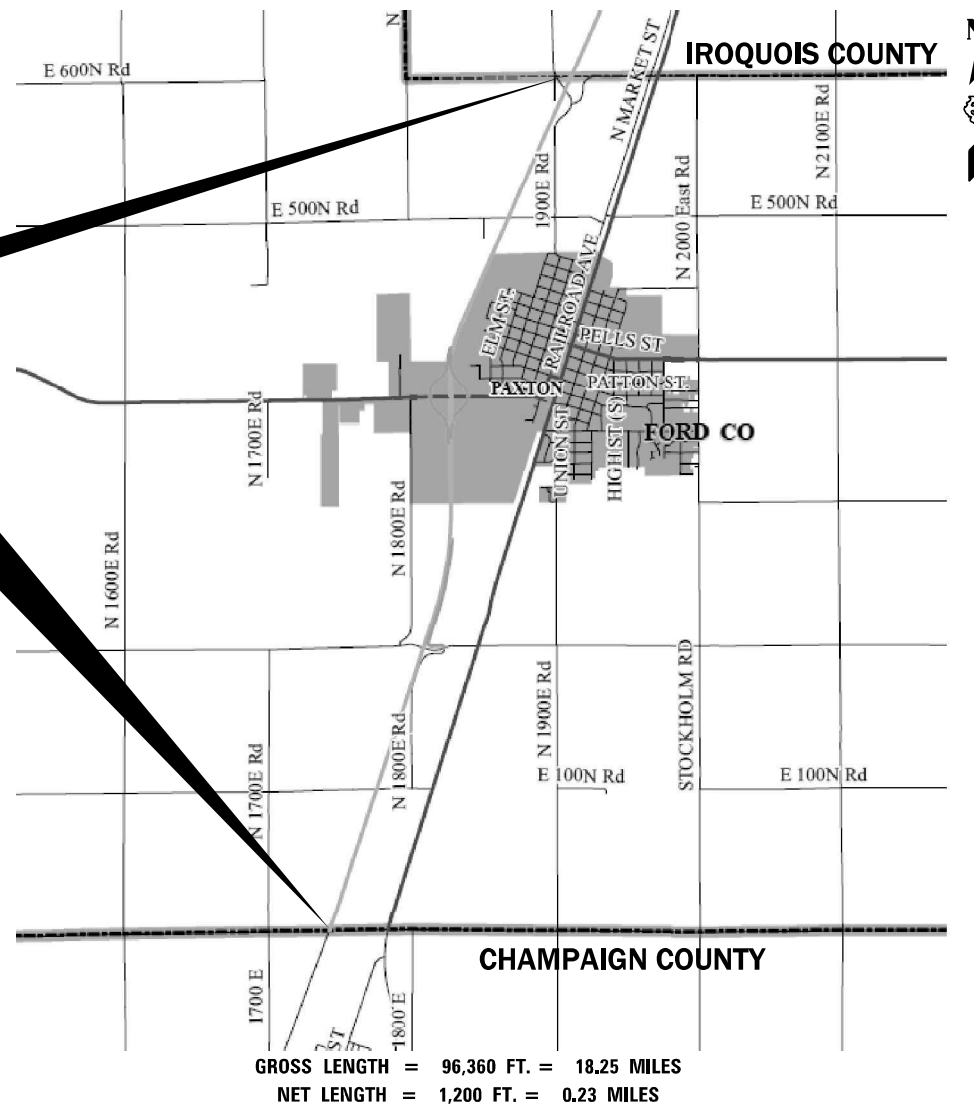
**PROPOSED  
HIGHWAY PLANS**

**FAI ROUTE 57 (I-57)  
SECTION (10,27-38&1)PP  
CLASS A PAVEMENT PATCHING  
FORD COUNTY  
C-93-083-22**



**IMPROVEMENT ENDS**  
IROQUOIS COUNTY LINE  
(MILE MARKER 263.51)

**IMPROVEMENT BEGINS**  
CHAMPAIGN COUNTY LINE  
MILE MARKER 257.08



FULL SIZE PLANS HAVE BEEN PREPARED USING STANDARD ENGINEERING SCALES. REDUCED SIZED PLANS WILL NOT CONFORM TO STANDARD SCALES. IN MAKING MEASUREMENTS ON REDUCED PLANS, THE ABOVE SCALES MAY BE USED.

J.U.L.I.E.  
JOINT UTILITY LOCATION INFORMATION FOR EXCAVATION  
1-800-892-0123  
OR 811

**PROJECT ENGINEER YOGESH PATEL P.E.**  
**UNIT CHIEF RON WOODSHANK**  
**DISTRICT 3 NO. (815) 434-6131**  
**CONTRACT NO. 66M60**

GROSS LENGTH = 96,360 FT. = 18.25 MILES  
NET LENGTH = 1,200 FT. = 0.23 MILES

**FUNCTIONAL CLASSIFICATION**  
RURAL INTERSTATE  
F.A.I. ROUTE 57 (I-57)  
2019 ADT = 19,500  
P.V. 60.8 % S.U. 2.9 % M.U. 36.3 %

STATE OF ILLINOIS  
DEPARTMENT OF TRANSPORTATION

SUBMITTED March 22, 2022

*David Alford*  
REGIONAL ENGINEER

May 13, 2022 *Jack A. Etk*  
ENGINEER OF DESIGN AND ENVIRONMENT

May 13, 2022 *Stephen McSwain*  
DIRECTOR OF HIGHWAYS PROJECT IMPLEMENTATION

**PRINTED BY THE AUTHORITY  
OF THE STATE OF ILLINOIS**

**GENERAL NOTES**

PLAN DIMENSIONS AND DETAILS RELATIVE TO EXISTING PLANS ARE SUBJECT TO NOMINAL CONSTRUCTION VARIATIONS. THE CONTRACTOR SHALL FIELD VERIFY EXISTING DIMENSIONS AND DETAILS AFFECTING NEW CONSTRUCTION AND MAKE NECESSARY APPROVED ADJUSTMENTS PRIOR TO CONSTRUCTION OR ORDERING OF MATERIALS. SUCH VARIATIONS SHALL NOT BE CAUSE FOR ADDITIONAL COMPENSATION FOR A CHANGE IN SCOPE OF WORK; HOWEVER, THE CONTRACTOR WILL BE PAID FOR THE QUANTITY ACTUALLY FURNISHED AT THE UNIT PRICE BID FOR THE WORK.

ALL EXCAVATED MATERIAL, WHICH INCLUDES DIGGING OR GRADING OF ANY SOIL OR FILL MATERIAL, WITH THE EXCEPTION OF AGGREGATE FILLS, MUST BE INCORPORATED WITHIN THE IDOT RIGHT OF WAY.

THE CONTRACTOR SHALL CONTACT JULIE AT LEAST 48 HOURS PRIOR TO EXCAVATION TO DETERMINE WHICH UTILITIES ARE IN THE AREA.

**COMMITMENTS**

STATE OF ILLINOIS  
DEPARTMENT OF TRANSPORTATION  
DISTRICT THREE  
AS BUILT INFORMATION

\_\_\_\_\_  
SUPERVISING CONSTRUCTION FIELD ENGINEER

\_\_\_\_\_  
RESIDENT ENGINEER / TECHNICIAN

START & END DATES  
OF CONSTRUCTION:

\_\_\_\_\_

INSPECTORS:

\_\_\_\_\_

\_\_\_\_\_

\_\_\_\_\_

STATE OF ILLINOIS  
DEPARTMENT OF TRANSPORTATION  
DISTRICT THREE

PREPARED BY: \_\_\_\_\_  
DISTRICT STUDIES & PLANS ENGINEER

DATE: \_\_\_\_\_

EXAMINED BY: \_\_\_\_\_  
DISTRICT CONSTRUCTION ENGINEER

\_\_\_\_\_  
DISTRICT MATERIALS ENGINEER

\_\_\_\_\_  
DISTRICT OPERATIONS ENGINEER

FILE NAME =	USER NAME = woodshank1	DESIGNED - RW	REVISED -
pw:\idot\pw\berkeley.com\PWIDOT\Documents\IDOT Office\District 3\Projects\ID366M60\CADData\ID366M60 - PLANS.dgn		DRAWN - RW	REVISED -
Default	PLOT SCALE = 100,0000' / in.	CHECKED - YP	REVISED -
	PLOT DATE = 3/22/2022	DATE - 2/22/2022	REVISED -

**STATE OF ILLINOIS  
DEPARTMENT OF TRANSPORTATION**

**GENERAL NOTES**

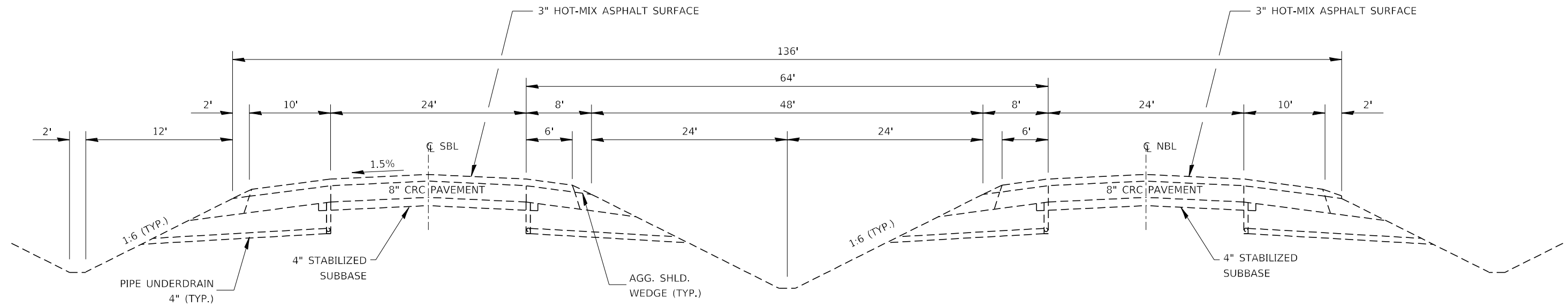
SCALE: SHEET 1 OF 1 SHEETS STA. TO STA.

F.A.I. RTE.	SECTION	COUNTY	TOTAL SHEETS	SHEET NO.
57	(10,27-38&1)PP	FORD	9	2
			CONTRACT NO. 66M60	
		ILLINOIS	FED. AID PROJECT	

CODE NO.	ITEM	UNIT	TOTAL QUANTITY	CONSTRUCTION CODE	
				CONTRACT MAINTENANCE 100% STATE	
				ROADWAY	RURAL
44200565	CLASS A PATCHES, TYPE II, 11 INCH	SQ YD	352	352	
44200569	CLASS A PATCHES, TYPE III, 11 INCH	SQ YD	35	35	
44200571	CLASS A PATCHES, TYPE IV, 11 INCH	SQ YD	187	187	
44213000	PATCHING REINFORCEMENT	SQ YD	574	574	
44213200	SAW CUTS	FOOT	1772	1772	
44213204	TIE BARS 3/4"	EACH	1254	1254	
67100100	MOBILIZATION	L SUM	1	1	
70100420	TRAFFIC CONTROL AND PROTECTION, STANDARD 701411	EACH	4	4	
70100800	TRAFFIC CONTROL AND PROTECTION, STANDARD 701401	L SUM	1	1	
70103815	TRAFFIC CONTROL SURVEILLANCE	CAL DA	8	8	
70107025	CHANGEABLE MESSAGE SIGN	CAL DA	28	28	
* 78008210	POLYUREA PAVEMENT MARKING TYPE I - LINE 4"	FOOT	430	430	
* 78008230	POLYUREA PAVEMENT MARKING TYPE I - LINE 6"	FOOT	110	110	
X1700018	CLASS A PATCH - EXPANSION JOINT	FOOT	144	144	

\*= SPECIALTY ITEM

FILE NAME =	USER NAME = woodshank1	DESIGNED - RW	REVISED -	<b>STATE OF ILLINOIS DEPARTMENT OF TRANSPORTATION</b>	<b>SUMMARY OF QUANTITIES</b>				F.A.I. RTE.	SECTION	COUNTY	TOTAL SHEETS	SHEET NO.
pw:\idol-pw.bentley.com\PWIDOT\Documents\IDOT Office\District 3\Projects\ID366M60\CADData\ID366M60 - PLANS.dwg	DRAWN - RW	CHECKED - YP	REVISED -						57	(10,27-38&1)PP	FORD	9	3
Default	PLOT SCALE = 100,0000' / in.	DATE - 2/22/2022	REVISED -		SCALE: SHEET 1 OF 2 SHEETS STA. TO STA.				ILLINOIS FED. AID PROJECT				
	PLOT DATE = 3/22/2022								CONTRACT NO. 66M60				



**TYPICAL SECTION (F.A.I.57)**

MILE MARKER 257.08 - MILE MARKER 263.51

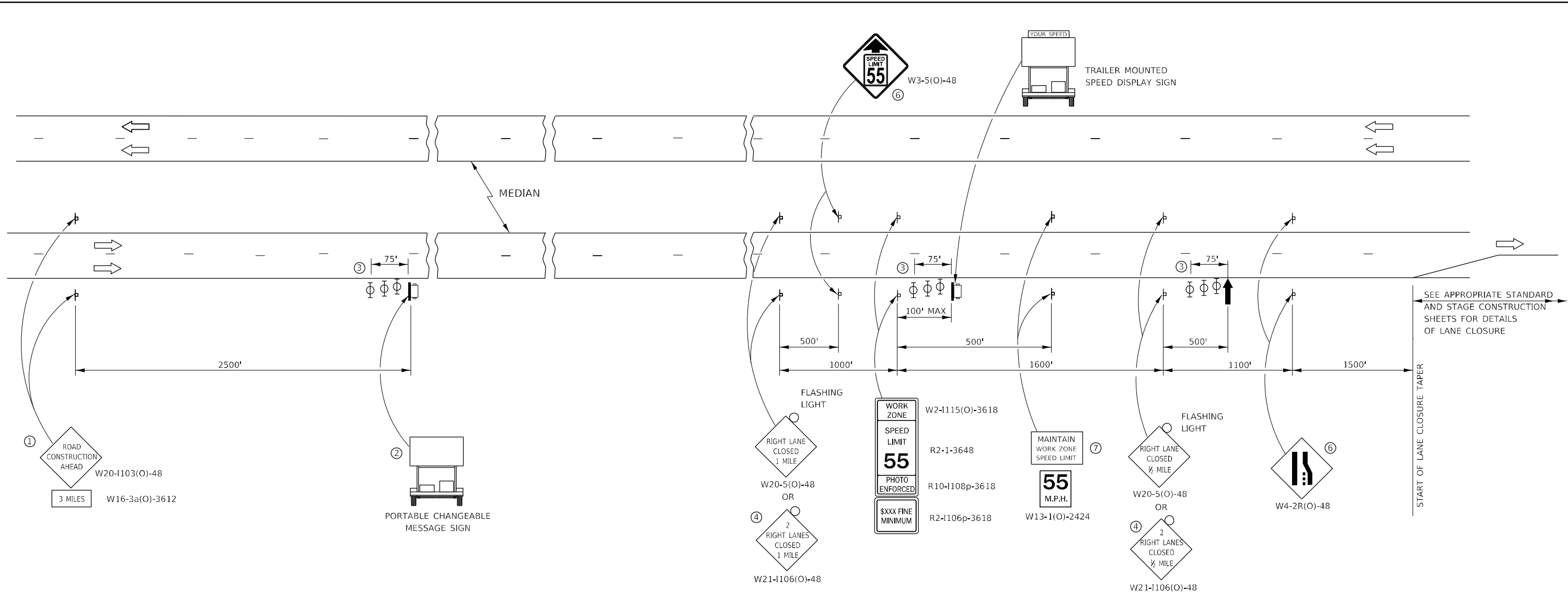
FILE NAME =	USER NAME = woodshank1	DESIGNED - RW	REVISED -	<b>STATE OF ILLINOIS DEPARTMENT OF TRANSPORTATION</b>	<b>TYPICAL SECTIONS</b>			F.A.I. RTE.	SECTION	COUNTY	TOTAL SHEETS	SHEET NO.
pw:\illdot\pw.bentley.com\PWIDOT\Documents\IDOT Office\District 3\Projects\ID366M60\CADData\ID366M60 - PLANS.dwg		DRAWN - RW	REVISED -		57	(10,27-38&1)PP	FORD	9	4			
Default	PLOT SCALE = 100,0000' / in.	CHECKED - YP	REVISED -		SCALE: SHEET 1 OF 1 SHEETS STA. TO STA.			CONTRACT NO. 66M60				
	PLOT DATE = 3/22/2022	DATE - 2/22/2022	REVISED -					ILLINOIS FED. AID PROJECT				

**PATCHING SCHEDULE  
NORTHBOUND LANES**

LOCATION	PASSING LANE								DRIVING LANE								
	PATCH LENGTH	CLASS A PATCHING			CLASS A PATCH - EXPANSION JOINT	PATCH REINFORCEMENT	SAW CUTS	TIE BARS	PATCH LENGTH	CLASS A PATCHING			CLASS A PATCH - EXPANSION JOINT	PATCH REINFORCEMENT	SAW CUTS	TIE BARS	
		TYPE II 11"	TYPE III 11"	TYPE IV 11"						TYPE II 11"	TYPE III 11"	TYPE IV 11"					
MILE MARKER	FEET	SQ YD	SQ YD	SQ YD	FOOT	SQ YD	FOOT	EACH	FEET	SQ YD	SQ YD	SQ YD	FOOT	SQ YD	FOOT	EACH	
257.70									12		16			16	48	44	
258.20									8	11				11	40	44	
258.40									6	8				8	36	44	
258.50									10	13				13	44	44	
258.50	6	8				8		36									
258.55									10	13				13	44	44	
258.70	10	13			12	13		44	22	10	13		12	13	44	22	
258.70	6	8			12	8		36	22								
259.30									8	11				11	40	44	
260.40									6	8				8	36	44	
260.50	10	13			12	13		44	22	10	13		12	13	44	22	
260.90									6	8				8	36	44	
261.00									14		19			19	52	44	
261.75	10	13			12	13		44	22	10	13		12	13	44	22	
261.75	8	11			12	11		40	22	8	11		12	11	40	22	
261.80									6	8				8	36	44	
261.90									6	8				8	36	44	
262.45									10	13				13	44	44	
262.50									6	8				8	36	44	
262.40									140			187		187	304	90	
SUBTOTALS	50	66			60	66		244	154	286	159	35	187	48	381	1004	660
TOTALS	336	225	35	187	48	447		1248	814								

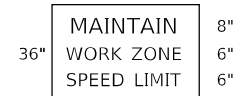
**PATCHING SCHEDULE  
SOUTHBOUND LANES**

LOCATION	PASSING LANE								DRIVING LANE								
	PATCH LENGTH	CLASS A PATCHING			CLASS A PATCH - EXPANSION JOINT	PATCH REINF	SAW CUTS	TIE BARS	PATCH LENGTH	CLASS A PATCHING			CLASS A PATCH - EXPANSION JOINT	PATCH REINF	SAW CUTS	TIE BARS	
		TYPE II 11"	TYPE III 11"	TYPE IV 11"						TYPE II 11"	TYPE III 11"	TYPE IV 11"					
MILE MARKER	FEET	SQ YD	SQ YD	SQ YD	FOOT	SQ YD	FOOT	EACH	FEET	SQ YD	SQ YD	SQ YD	FOOT	SQ YD	FOOT	EACH	
263.10	6	8			12	8		36	22	6	8		12	8	36	22	
262.90										6	8			8	36	44	
262.45	6	8						8	36	44							
262.05										6	8			8	36	44	
261.60										8	11			11	40	44	
261.55	6	8			12	8		36	22	6	8		12	8	36	22	
260.55	6	8			12	8		36	22	6	8		12	8	36	22	
258.75										8	11			11	40	44	
258.75	8	11			12	11		40	22	8	11		12	11	40	22	
258.70	8	11				11		40	44								
SUBTOTALS	40	54			48	54		224	176	54	73		48	73	300	264	
TOTALS	94	127			96	127		524	440								



- ① THE ROAD CONSTRUCTION AHEAD SIGN SHALL BE LOCATED 3 MILES IN ADVANCE OF THE PROJECT LIMITS.
- ② TO BE PLACED IN THE MEDIAN WHEN FEASIBLE. THE MESSAGE BOARD SHALL BE USED TO DISPLAY STATUS OF LANES WITHIN THE PROJECT. THE PRIMARY MESSAGES SHALL BE:  
"RIGHT LANE CLOSED" / " x MILES AHEAD"  
"LEFT LANE CLOSED" / " x MILES AHEAD"  
"ALL LANES OPEN"
- ③ THREE, TYPE II BARRICADES, DRUMS, OR VERTICAL BARRICADES AT 25' CENTERS.
- ④ THIS SIGN SHALL BE USED WHEN 2 LANES ARE CLOSED.
- ⑤ WHEN THE LEFT LANE IS CLOSED, SWITCH THESE TWO SIGNS AND THE DIRECTION OF THE MERGE ARROW.
- ⑥ THIS SIGN SHALL ONLY BE USED IF THE EXISTING SPEED LIMIT IS GREATER THAN 65 MPH.

⑦ 48"x36" FLUORESCENT ORANGE SIGN WITH BLACK LETTERS.  
48"



"MAINTAIN WORK ZONE SPEED LIMIT" SIGN SHALL NOT BE PAID FOR SEPARATELY BUT SHALL BE INCLUDED IN THIS TRAFFIC CONTROL STANDARD.

- ARROW BOARD
- PORTABLE CHANGEABLE MESSAGE SIGN
- SIGN
- TYPE II BARRICADE, DRUM, OR VERTICAL BARRICADE WITH MONODIRECTIONAL FLASHING LIGHT
- TEMPORARY RUMBLE STRIPS (SEE SPECIAL PROVISION)

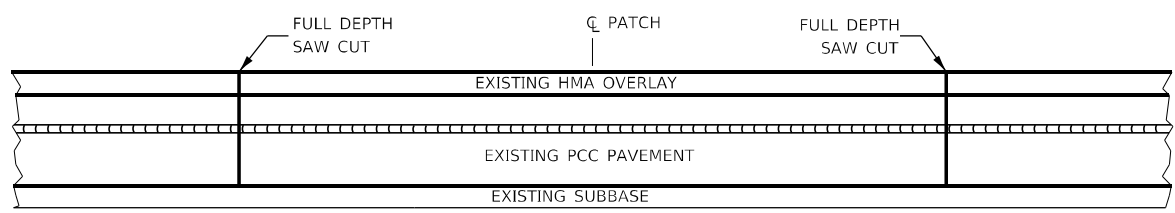
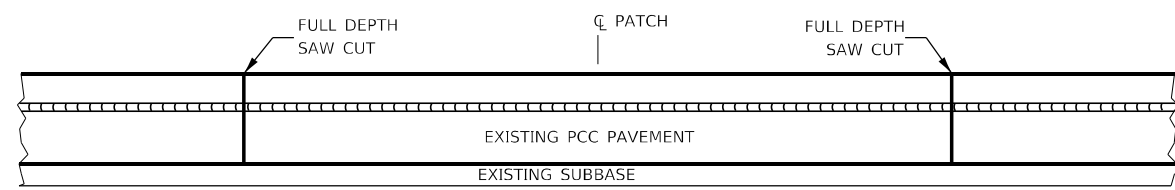
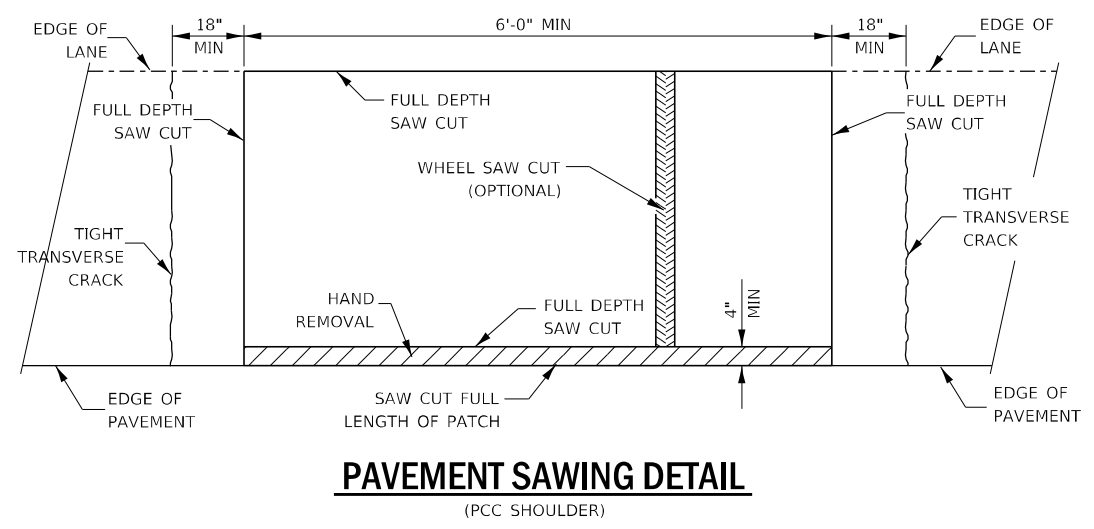
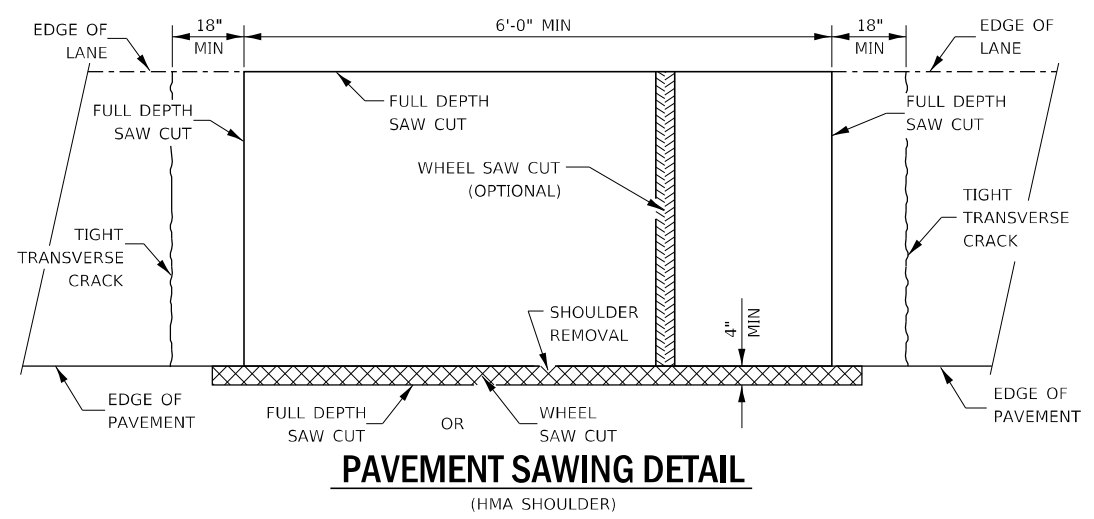
**GENERAL NOTE:**

THIS STANDARD IS USED WHERE AT ANY TIME A LANE IS CLOSED ON A FREEWAY/EXPRESSWAY.

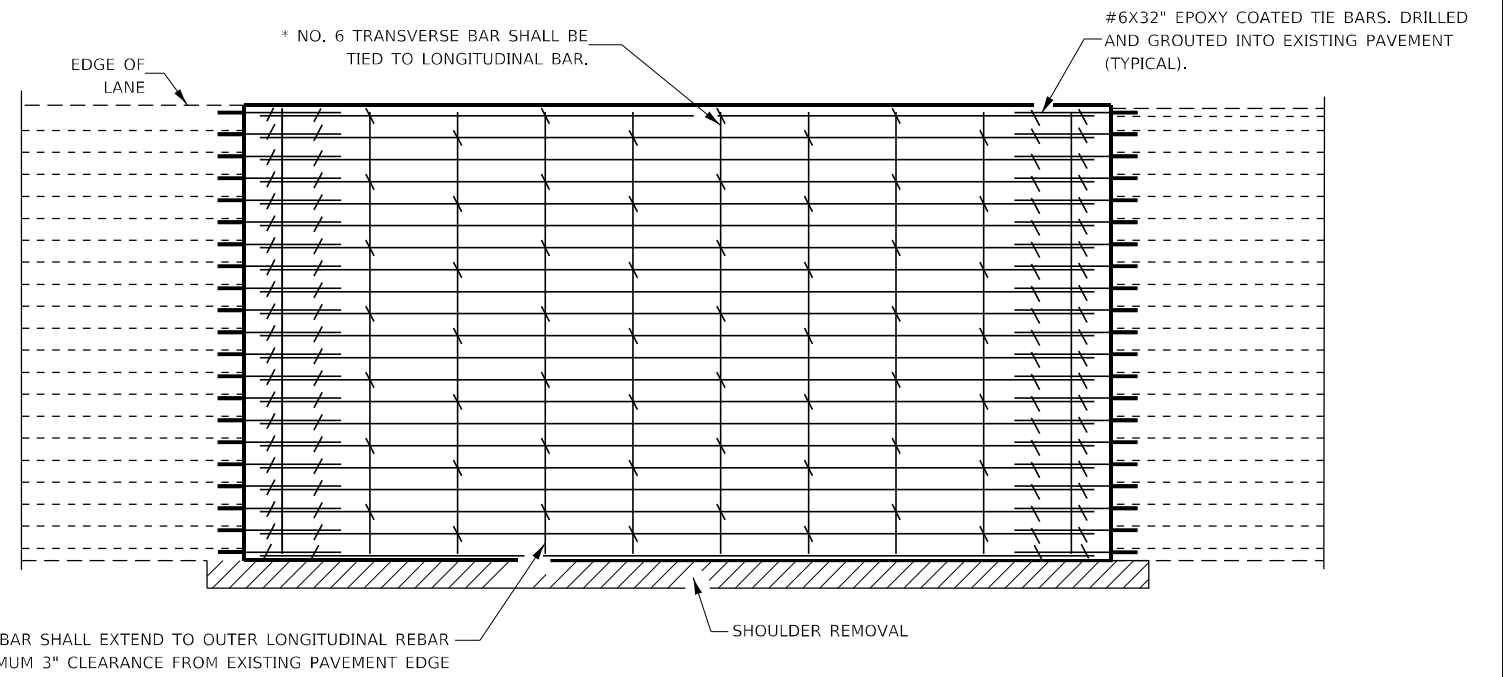
WHEN THE LEFT LANE IS CLOSED, LEFT LANE CLOSED SIGNS SHALL BE SUBSTITUTED FOR THE RIGHT LANE CLOSED SIGNS.

THE FIRST THREE SIGNS, RUMBLE STRIPS AND THE MESSAGE BOARD ARE STATIONARY. THE OTHER SIGNS AND ARROWBOARDS SHALL BE MOVED AS NECESSARY TO MAINTAIN THE REQUIRED DISTANCE FROM THE START OF THE LANE CLOSURE TAPER(S).

SEE SPECIAL PROVISIONS.

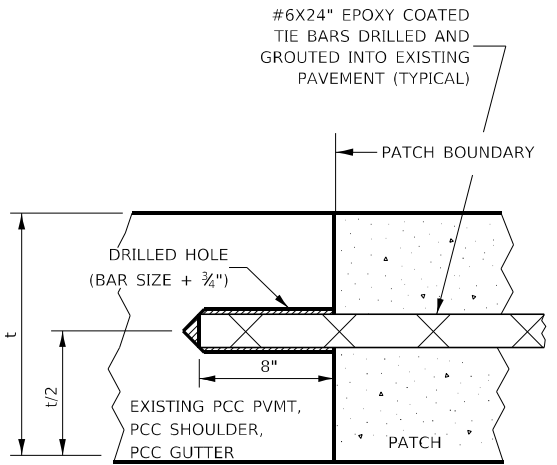


**PAVEMENT SAWING DETAIL FOR CLASS A PATCHING (CRC PAVEMENT)**



TRANSVERSE REBAR SHALL EXTEND TO OUTER LONGITUDINAL REBAR WHILE PROVIDING A MINIMUM 3" CLEARANCE FROM EXISTING PAVEMENT EDGE

**PAVEMENT REINFORCEMENT DETAIL**



**LONGITUDINAL CONSTRUCTION JOINT**

PATCHES MORE THAN 20' IN LENGTH SHALL BE TIED TO ADJACENT PAVEMENT, PCC SHOULDERS OR PCC CURB AND GUTTER WITH #6X24" EPOXY COATED TIE BARS AT 36" CENTERS.

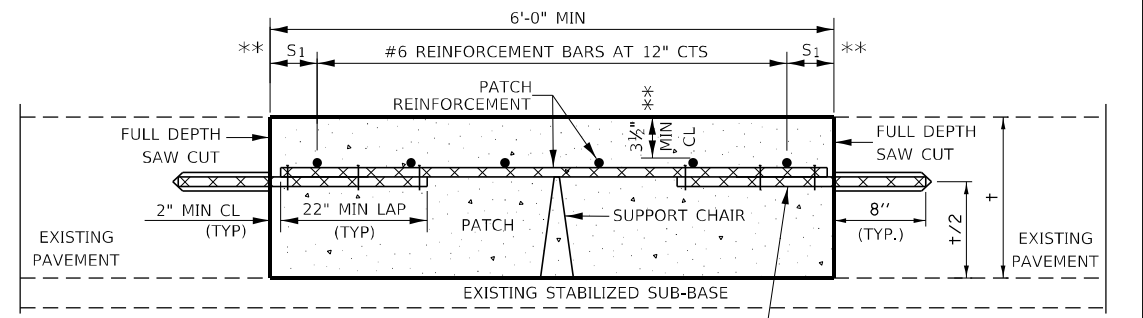
**NOTES:**

EXISTING LONGITUDINAL REINFORCEMENT: 22 #5 BARS AT 6 1/2" SPACING.

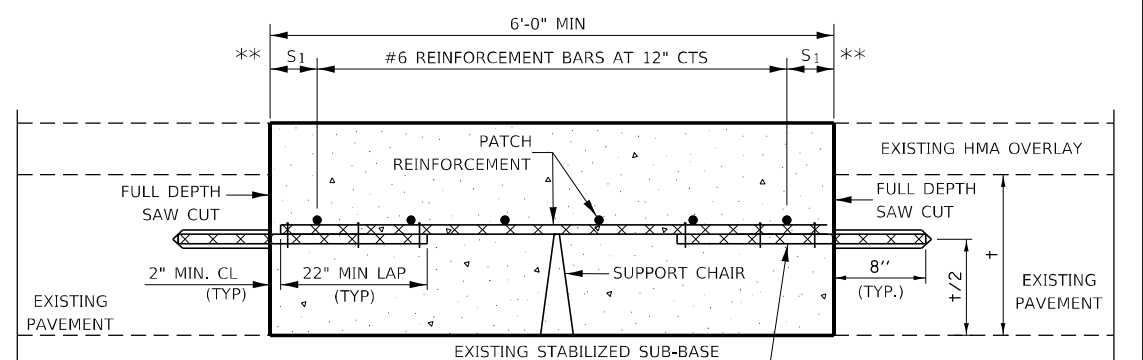
SPACING OF NEW LONGITUDINAL REINFORCEMENT AND NEW LONGITUDINAL TIE BARS SHALL MATCH SPACING OF EXISTING REINFORCEMENT AND SHALL BE TIED TOGETHER WITH A MINIMUM OF TWO TIES PER BAR.

\* EVERY THIRD INTERSECTION MUST BE TIED. WHEN THE MINIMUM CLEARANCE CANNOT BE OBTAINED WITH THE TRANSVERSE REBAR ON TOP, THEN THE TRANSVERSE REBAR SHALL BE TIED TO THE BOTTOM OF THE LONGITUDINAL REBAR.

\*\* VARIABLE: WHERE S IS 2 1/2" MIN. AND 12" MAX.



**WITHOUT HMA OVERLAY**



**WITH HMA OVERLAY**

**PATCHING DETAIL FOR CLASS A PATCHING (CRC PAVEMENT)**

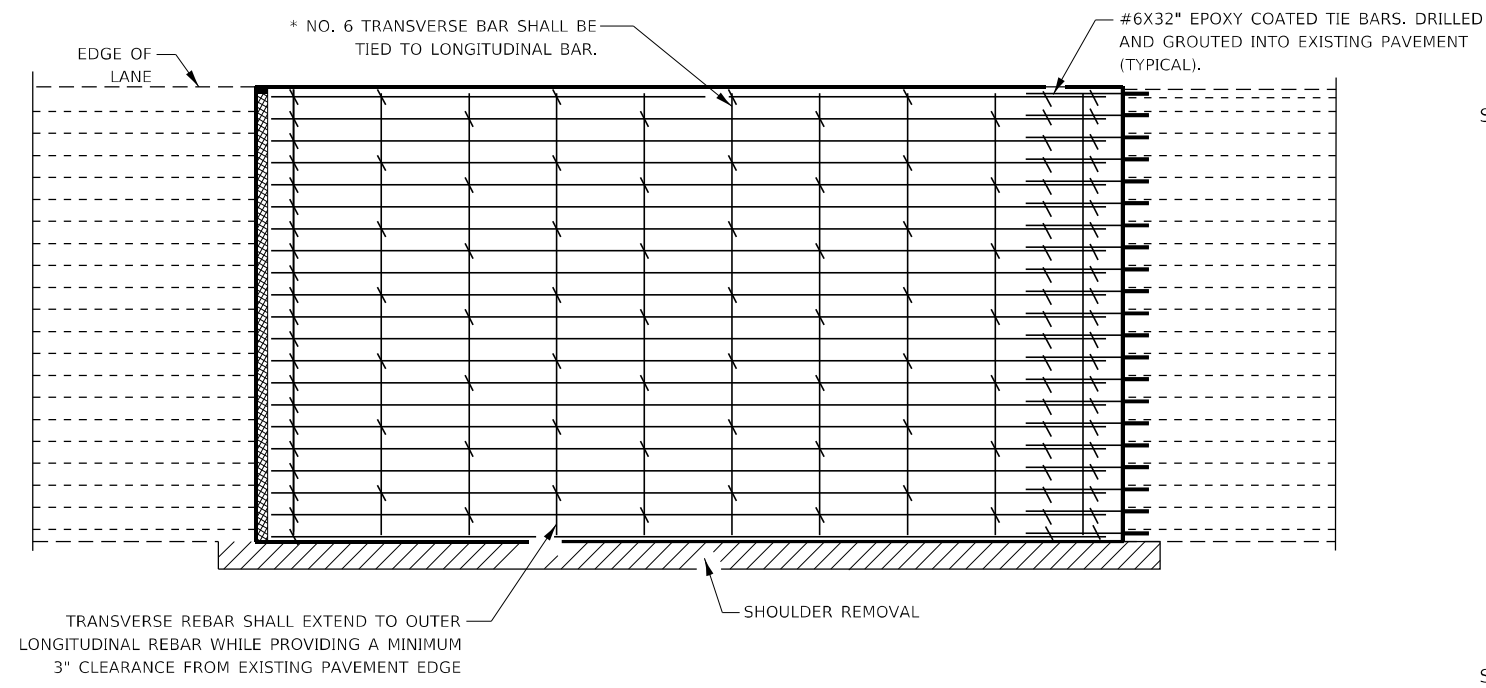
FILE NAME =	USER NAME = woodshank1	DESIGNED - RW	REVISED -
pw:\ltdot-pw\berkeley.com\PWIDOT\Documents\IDOT Office\District 3\Projects\1386M60\CADData\1386M60 - PLANS.dwg		DRAWN - RW	REVISED -
Default	PLOT SCALE = 100,0000 / 1in.	CHECKED - YP	REVISED -
	PLOT DATE = 3/22/2022	DATE - 2/22/2022	REVISED -

**STATE OF ILLINOIS  
DEPARTMENT OF TRANSPORTATION**

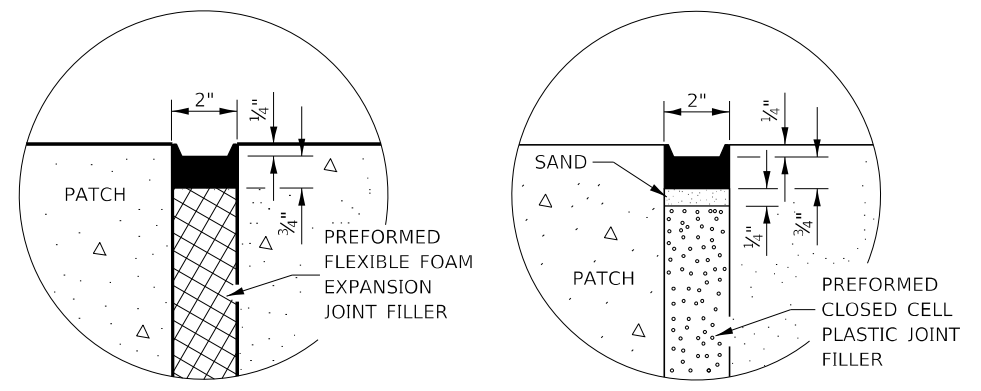
**CLASS A PATCHING DETAILS**

SCALE: SHEET 1 OF 2 SHEETS STA. TO STA.

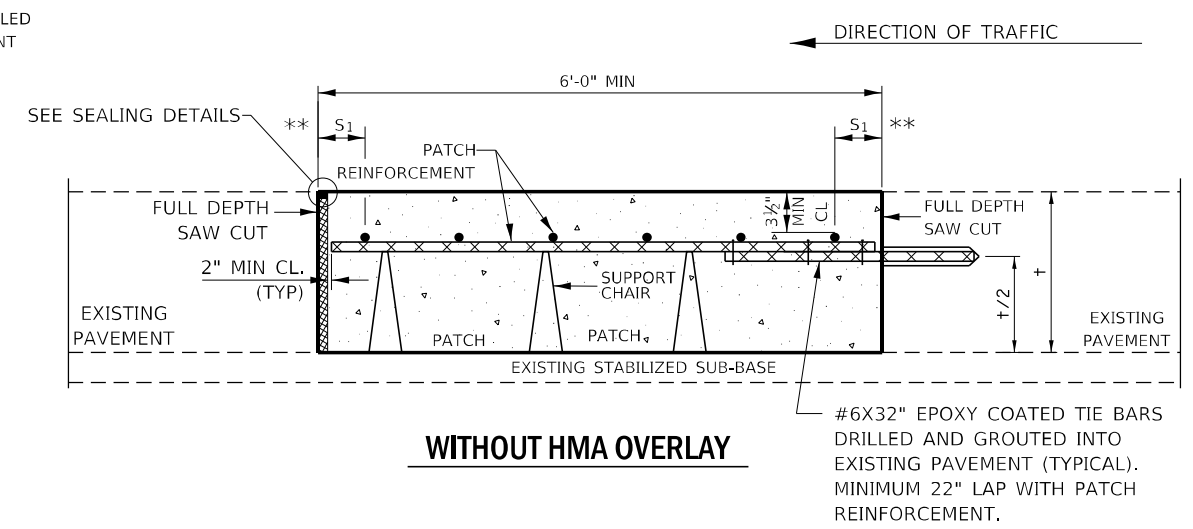
F.A.I. RTE. 57	SECTION (10,27-38&1)PP	COUNTY FORD	TOTAL SHEETS 9	SHEET NO. 7
			CONTRACT NO. 66M60	
ILLINOIS FED. AID PROJECT				



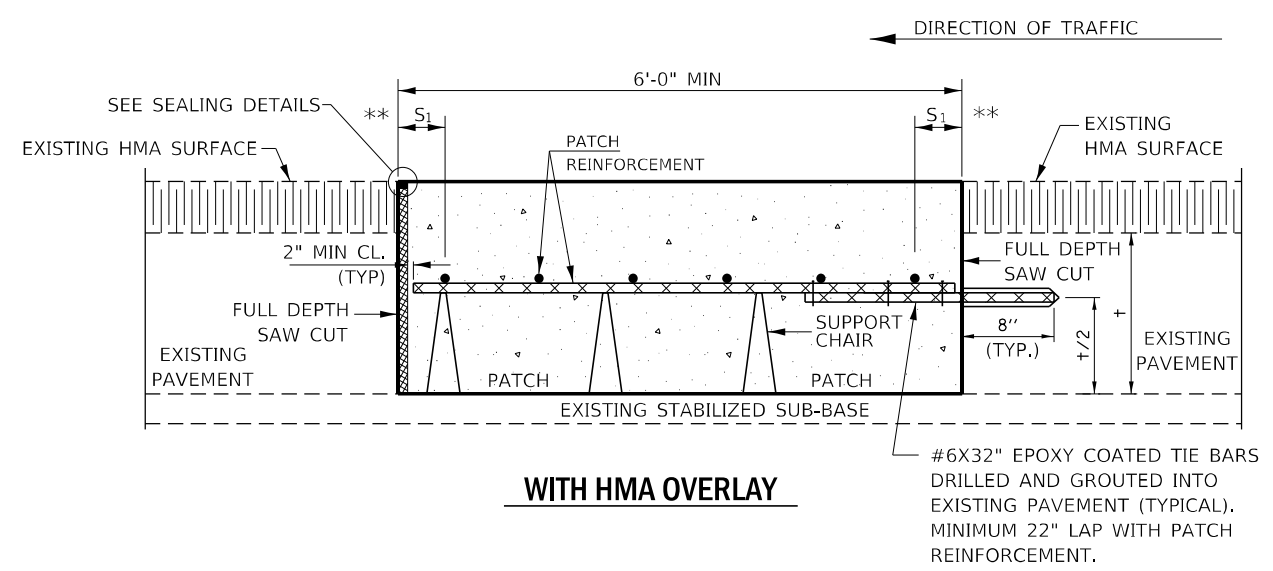
**PAVEMENT REINFORCEMENT DETAIL**



**SEALING DETAILS**

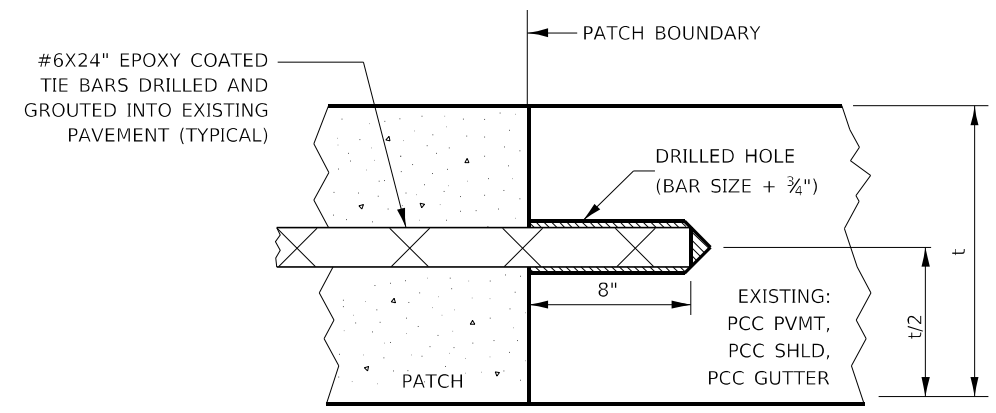


**WITHOUT HMA OVERLAY**



**WITH HMA OVERLAY**

**CLASS A PATCH WITH EXPANSION JOINT**

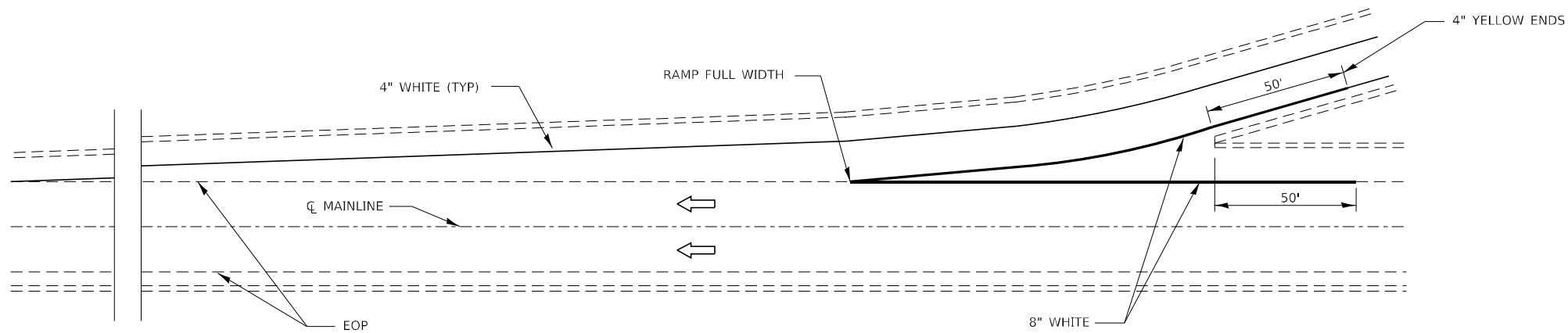


**LONGITUDINAL CONSTRUCTION JOINT**

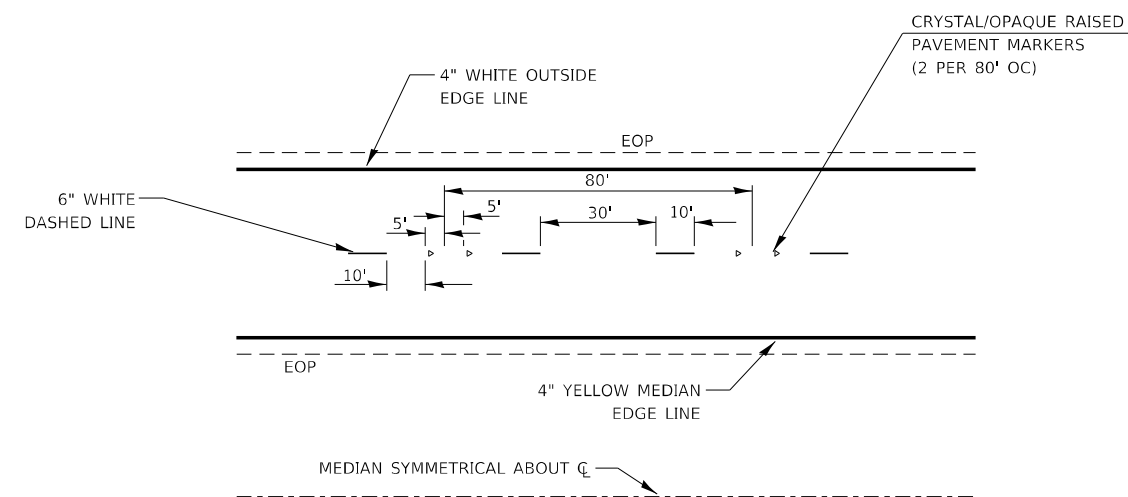
PATCHES MORE THAN 20' IN LENGTH SHALL BE TIED TO ADJACENT PAVEMENT, PCC SHOULDERS OR PCC CURB AND GUTTER WITH #6x24" EPOXY COATED TIE BARS AT 36" CENTERS.

- NOTES:**
- EXISTING LONGITUDINAL REINFORCEMENT: 22 #5 BARS AT 6 1/2" SPACING.
  - SPACING OF NEW LONGITUDINAL REINFORCEMENT AND NEW LONGITUDINAL TIE BARS SHALL MATCH SPACING OF EXISTING REINFORCEMENT AND SHALL BE TIED TOGETHER WITH A MINIMUM OF TWO TIES PER BAR.
  - \* EVERY THIRD INTERSECTION MUST BE TIED. WHEN THE MINIMUM CLEARANCE CANNOT BE OBTAINED WITH THE TRANSVERSE REBAR ON TOP, THEN THE TRANSVERSE REBAR SHALL BE TIED TO THE BOTTOM OF THE LONGITUDINAL REBAR.
  - \*\* VARIABLE: WHERE S IS 2 1/2" MIN. AND 12" MAX.

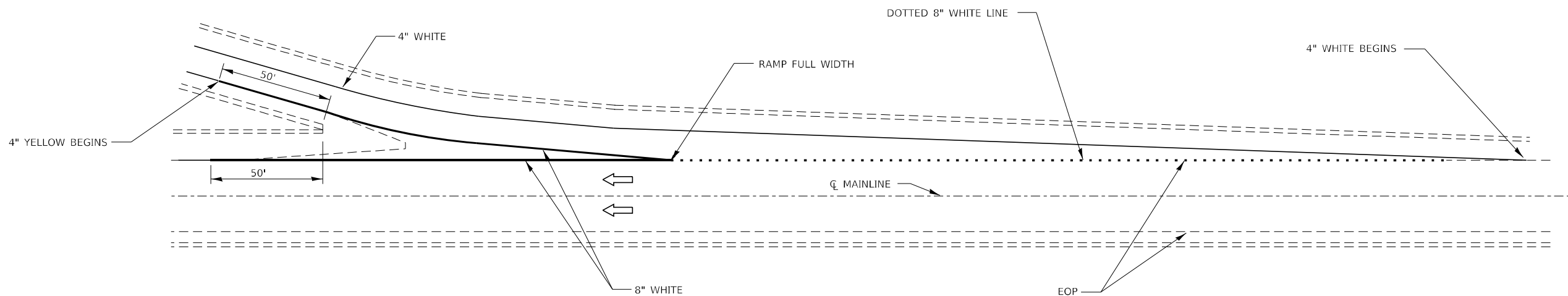




**TYPICAL PAVEMENT MARKING FOR ENTRANCE RAMP TERMINALS**



**TYPICAL PAVEMENT MARKINGS**



**TYPICAL PAVEMENT MARKINGS FOR EXIT RAMP TERMINALS**

FILE NAME =	USER NAME = woodshank1	DESIGNED - RW	REVISED -	<b>STATE OF ILLINOIS DEPARTMENT OF TRANSPORTATION</b>	<b>TYPICAL PAVEMENT MARKING DETAILS</b>			F.A.I. RTE.	SECTION	COUNTY	TOTAL SHEETS	SHEET NO.
pw:\idot\pw\berkeley.com\PWIDOT\Documents\IDOT Office\District 3\Projects\ID366M60\CADData\ID366M60 - PLANS.dwg	DRAWN - RW	REVISOR -	57					(10,27-38&1)PP	FORD	9	9	
Default	PLOT SCALE = 100,0000' / in.	CHECKED - YP	REVISOR -		CONTRACT NO. 66M60							
	PLOT DATE = 3/22/2022	DATE - 2/22/2022	REVISOR -		SCALE:	SHEET 1 OF 1 SHEETS	STA.	TO STA.	ILLINOIS	FED. AID PROJECT		