

STATE OF ILLINOIS
DEPARTMENT OF TRANSPORTATION

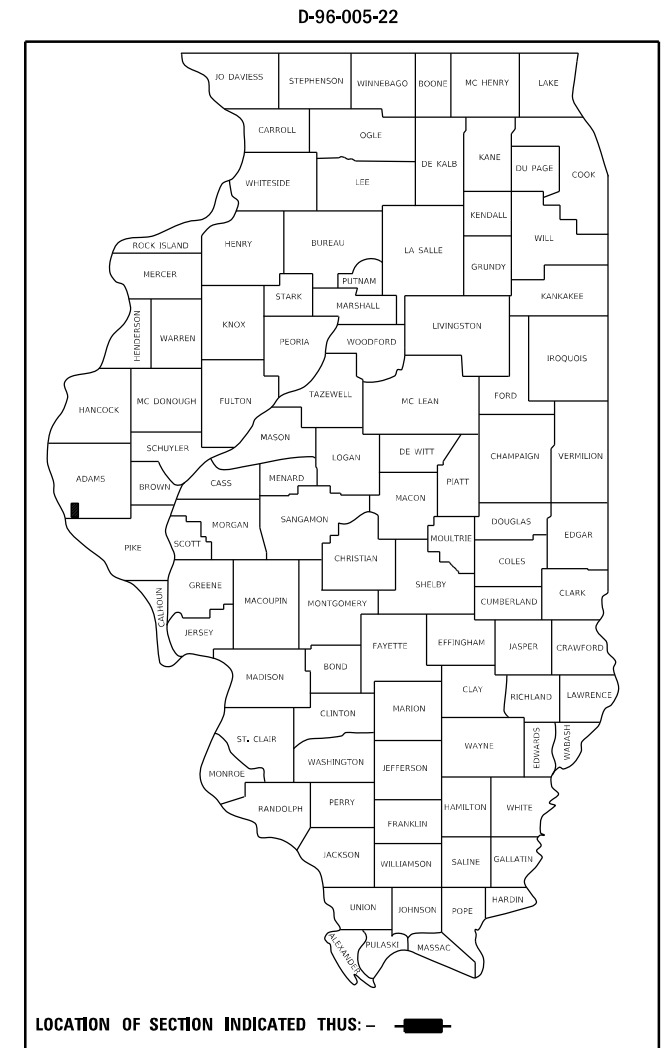
F.A.I. RTE.	SECTION	COUNTY	TOTAL SHEETS	SHEET NO.
172	1-31-1	ADAMS	5	1
		ILLINOIS	CONTRACT NO. 72N28	

FOR INDEX OF SHEETS, SEE SHEET NO. 2

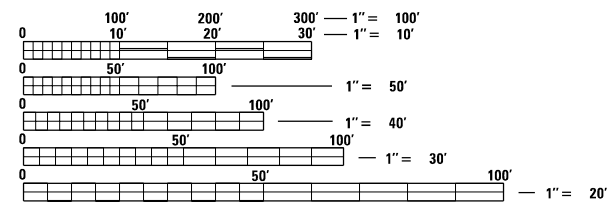
PROPOSED HIGHWAY PLANS

FAI 172 (I-172)
SECTION 1-31-1
ROCK REMOVAL

ADAMS COUNTY
C-96-008-22



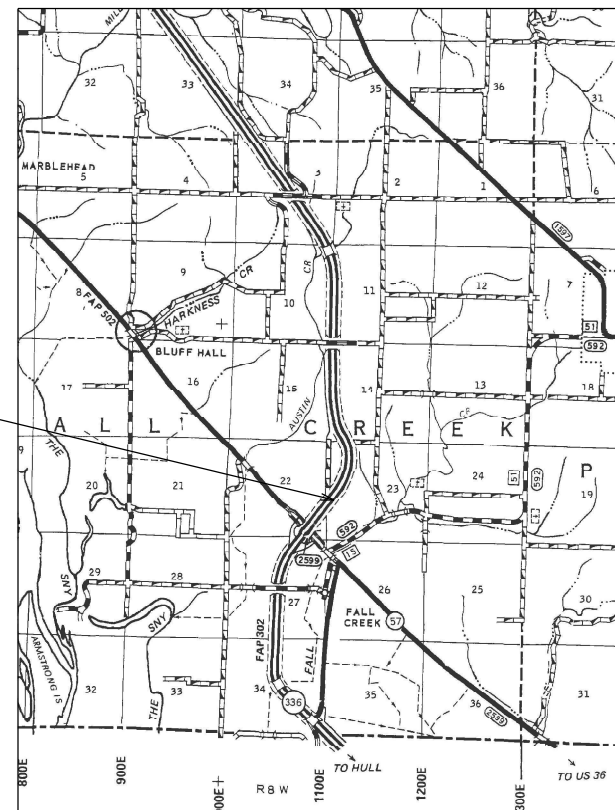
ADT = 4,950 (2021)
SU = 150 (2021)
MU = 550 (2021)



FULL SIZE PLANS HAVE BEEN PREPARED USING STANDARD ENGINEERING SCALES. REDUCED SIZED PLANS WILL NOT CONFORM TO STANDARD SCALES. IN MAKING MEASUREMENTS ON REDUCED PLANS, THE ABOVE SCALES MAY BE USED.

J.U.L.I.E.
JOINT UTILITY LOCATION INFORMATION FOR EXCAVATORS
1-800-892-0123
OR 811

PROJECT LOCATION
STA. 130+00.00



PROJECT ENGINEER: STEVE BERAN - (217) 782-7314
PROJECT MANAGER: TIM SHARP - (217) 524-9160

CONTRACT NO. 72N28

STATE OF ILLINOIS
DEPARTMENT OF TRANSPORTATION

SUBMITTED March 23 2022

[Signature] REGIONAL ENGINEER

May 13, 2022 *[Signature]*
ENGINEER OF DESIGN AND ENVIRONMENT

May 13, 2022 *[Signature]*
DIRECTOR OF HIGHWAYS PROJECT IMPLEMENTATION




PRINTED BY THE AUTHORITY
OF THE STATE OF ILLINOIS

INDEX

SHEET NO.	DESCRIPTION
1.	COVER SHEET
2.	INDEX, STANDARDS, SIGNATURES
3.	SUMMARY OF QUANTITIES
4.	LOCATION MAP
5.	DETAIL

STANDARDS

STANDARD NO.	DESCRIPTION
701101-05	OFF-RD OPERATIONS, MULTILINE, 15' TO 24" FROM EDGE OF PAVEMENT
701106-02	OFF-RD OPERATIONS, MULTILINE, MORE THAN 15' AWAY
701400-11	APPROACH TO LANE CLOSURE, FREEWAY/EXPRESSWAY
701406-13	LANE CLOSURE, FREEWAY/EXPRESSWAY, DAY OPERATIONS ONLY
701901-08	TRAFFIC CONTROL DEVICES
000001-08	STANDARD SYMBOLS, ABBREVIATIONS AND PATTERNS
001006	DECIMAL OF AN INCH AND OF A FOOT

STATE OF ILLINOIS DEPARTMENT OF TRANSPORTATION DIVISION OF HIGHWAYS DISTRICT 6	
EXAMINED	March 22 20 22
 ENGINEER OF OPERATIONS	
EXAMINED	March 22 20 22
 ENGINEER OF PROJECT IMPLEMENTATION	
EXAMINED	March 22 20 22
 ENGINEER OF PROGRAM DEVELOPMENT	

REV. - MS



PROJECT LOCATION STA. 130+00.00

PROJECT LOCATION STA. 130+00.00

MODEL: D:\p\h\p\...
 FILE NAME: S:\CONTRACT\MANT_CAD\72N28 - FAI 172 (L172) - ROCK REMOVAL - Adams Co\6-11-2022\PLANS\72N28-shk-4-location.mxd.dwg

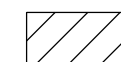
USER NAME = sharptd	DESIGNED - _____	REVISED - _____
DRAWN - _____	REVISIONS - _____	REVISIONS - _____
PLOT SCALE = 1.0000' / in.	CHECKED - _____	REVISED - _____
PLOT DATE = 3/23/2022	DATE - _____	REVISED - _____

**STATE OF ILLINOIS
DEPARTMENT OF TRANSPORTATION**

LOCATION MAP

SCALE: _____ SHEET ___ OF ___ SHEETS STA. _____ TO STA. _____

F.A.I. RTE.	SECTION	COUNTY	TOTAL SHEETS	SHEET NO.
172	1-31-1	ADAMS	5	4
CONTRACT NO. 72N28				
ILLINOIS FED. AID PROJECT				



AREA OF ROCK
EXCAVATION

FILE NAME =	USER NAME = sharptd	DESIGNED - _____	REVISED - _____
S:\CONTRMAINT_CAD\72N28 - FAI 172 (I-172)	ROCK REMOVAL - Adams Co-16-11-2022\PLANS	72N28-5-detail.dgn	REVISED - _____
Default	PLOT SCALE = 60.0000' / in.	CHECKED - _____	REVISED - _____
	PLOT DATE = 3/23/2022	DATE - _____	REVISED - _____

STATE OF ILLINOIS
DEPARTMENT OF TRANSPORTATION

DETAIL

SCALE: _____ SHEET ____ OF ____ SHEETS STA. _____ TO STA. _____

F.A.I. RTE.	SECTION	COUNTY	TOTAL SHEETS	SHEET NO.
172	1-31-1	ADAMS	5	5
ILLINOIS FED. AID PROJECT			CONTRACT NO. 72N28	