

SCHEDULE OF COMPLETION DATES

START DATE	COUNTY	COMPLETION DATE	COMPLETE DATE/SIGN OFF
OCTOBER 1, 2022	MCDONOUGH / KNOX	OCTOBER 15, 2022	
OCTOBER 10, 2022	PEORIA/TAZEWELL	OCTOBER 25, 2022	
OCTOBER 15, 2022	TIE UP LOOSE ENDS / MISSED SPOTS	OCTOBER 30, 2022	

NOTE: DAILY INSPECTIONS BY ROADSIDE MANAGER IN ALL LOCATIONS.
 Contact Roadside manager or Operations Field Engineer prior to commencing spray activities in all counties.
 County spraying must be completed before beginning spraying activities in other counties.

NO SPRAY AREAS

- I-155 MM 22-29 NB & SB
- I-155 MM 25 Tremont Interchange (Rattlesnake Master Plant)
- US 34 & Henderson Street (Rattlesnake Master Plant)
- I-74 MM 85 WB/EB Perennial Bed and Under High Tension Power Lines
- I-74 MM 62 WB (See Map)
- I-74 MM 58 WB Perennial Bed
- I-74 MM 91-93 Downtown Peoria Planting (with Exceptions Listed in Plans)
- US 34 & Henderson Street NW & SW Interchange (Rattlesnake Master Plant)

Notes:

1. Areas not accessible by spray rigs will be hand-sprayed with spray gun reaching at least 125 feet.
2. Spray rigs shall be equipped with high-flotation tires to access soft infields.
3. Non-working equipment shall be repaired immediately with no additional time allotted to the contractor for repairs.
4. Spray operators shall keep a copy of contract spray locations in the rig at all times.
5. Wind speed must be < 15 mph in order to perform work.
6. Temperature must be > 45 in order to perform work.

**FOR INFORMATION IN CASE OF
A CHEMICAL EMERGENCY CALL:**

DOW AGRO AT 1-800-263-1196

MODEL: Default
 FILE NAME: C:\Users\j13081.IDOT\Desktop\0418.Transportation\Weed Spraying\CAD Sheets\General Notes.dgn
 DIST: 4 - PTP 201.023\Work Order - Eastern 0418.Transportation\Weed Spraying\CAD Sheets\General Notes.dgn

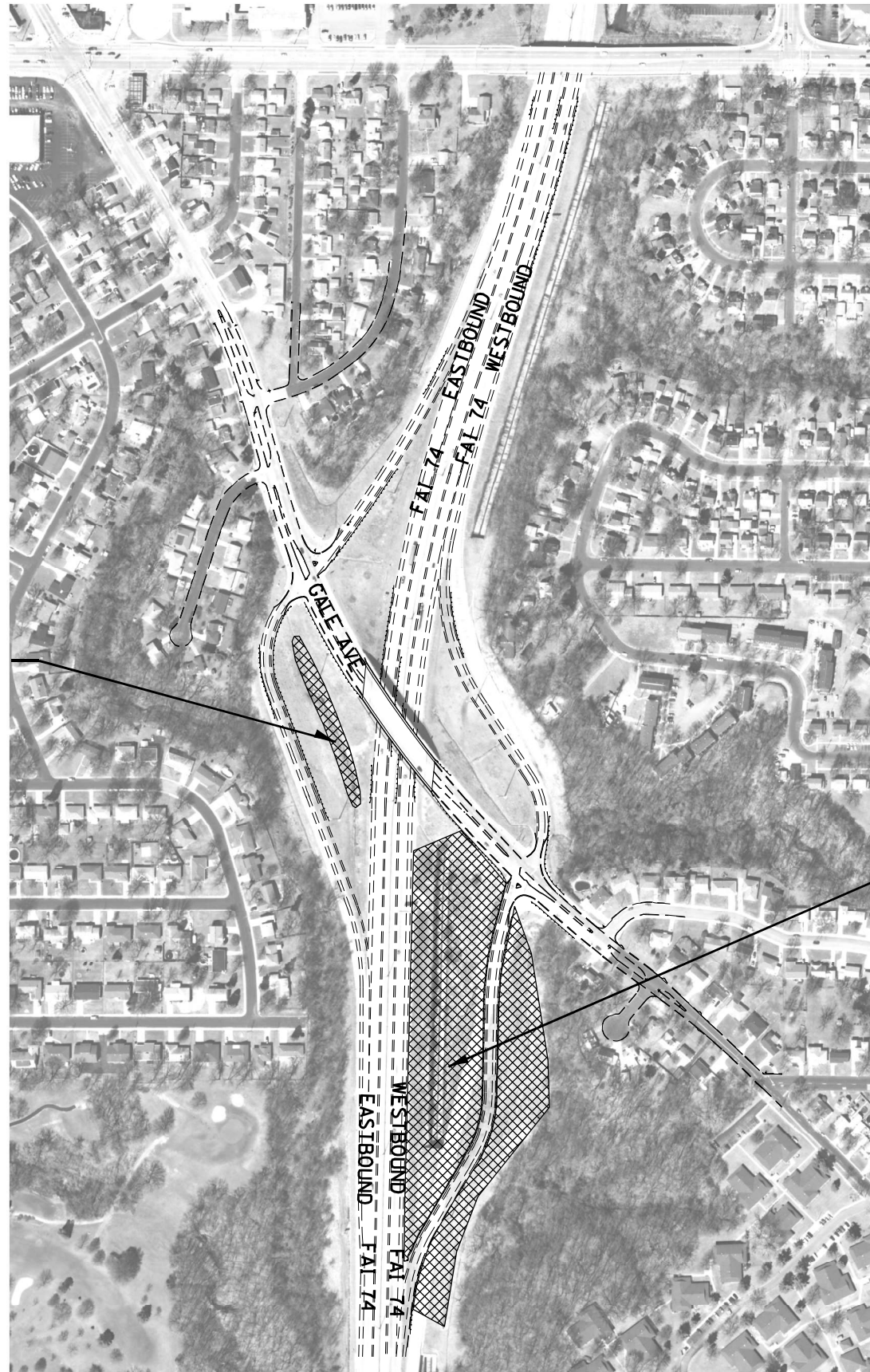


USER NAME = mirch	DESIGNED - MCR	REVISED -
	DRAWN - MCR	REVISED -
PLOT SCALE = 100,0000' / in.	CHECKED - MCL	REVISED -
PLOT DATE = 3/7/2022	DATE - 2/15/2022	REVISED -

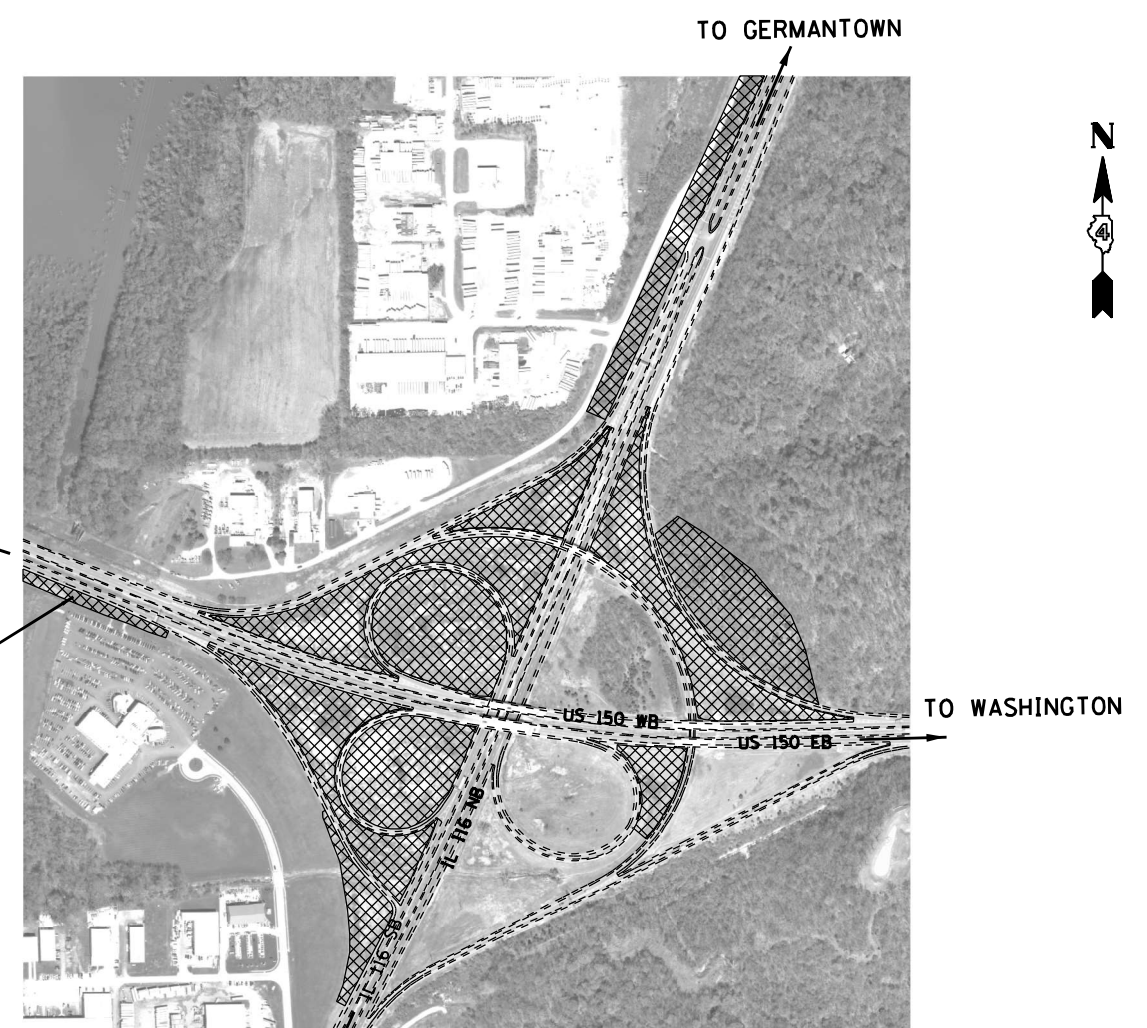
**STATE OF ILLINOIS
DEPARTMENT OF TRANSPORTATION**

GENERAL NOTES			
SCALE:	SHEET 2	OF 21 SHEETS	STA. TO STA.

F.A. RTE.	SECTION	COUNTY	TOTAL SHEETS	SHEET NO.
VAR.	D4 WEED SPRAYING 2022	VARIOUS	21	2
CONTRACT NO. 68G89				
ILLINOIS FED. AID PROJECT				



MM 90 Exit I-74 / GALE AVE. INTERCHANGE



US 150 / IL 116 INTERCHANGE



BRUSH,
CANADA THISTLE
AND TEASEL
VERY STEEP
MAY REQUIRE SS•

LEGEND



SS = Spot Spraying



BR = Brush



BS = Blanket Spraying

SS* = May Require Hand Spray/Back Pack

TSL = Teasel

THSL = Thistle

CV = Crown Vetch

FL = Fence Line

(++) = Engineer must be present during spray operations

NS = No Spray

Wet = Area is Seasonally Wet

PR = Prairie - Consult with R.E.

Edges = Spray mowed edge only & consult with R.E.

Heavy = Heavy Infestation

SRRA = Spoon River Rest Area

STP = Steep Hillside

(*) = For Information Only

NOTE: Ariel maps are provided as a reference to the surrounding vegetation.

NOT TO SCALE

MODEL: Default
FILE: NAME: C:\Users\everst\Desktop\Location Map.dgn

KLINGNER & ASSOCIATES, P.C.
Engineers • Architects • Surveyors
Galesburg, Illinois

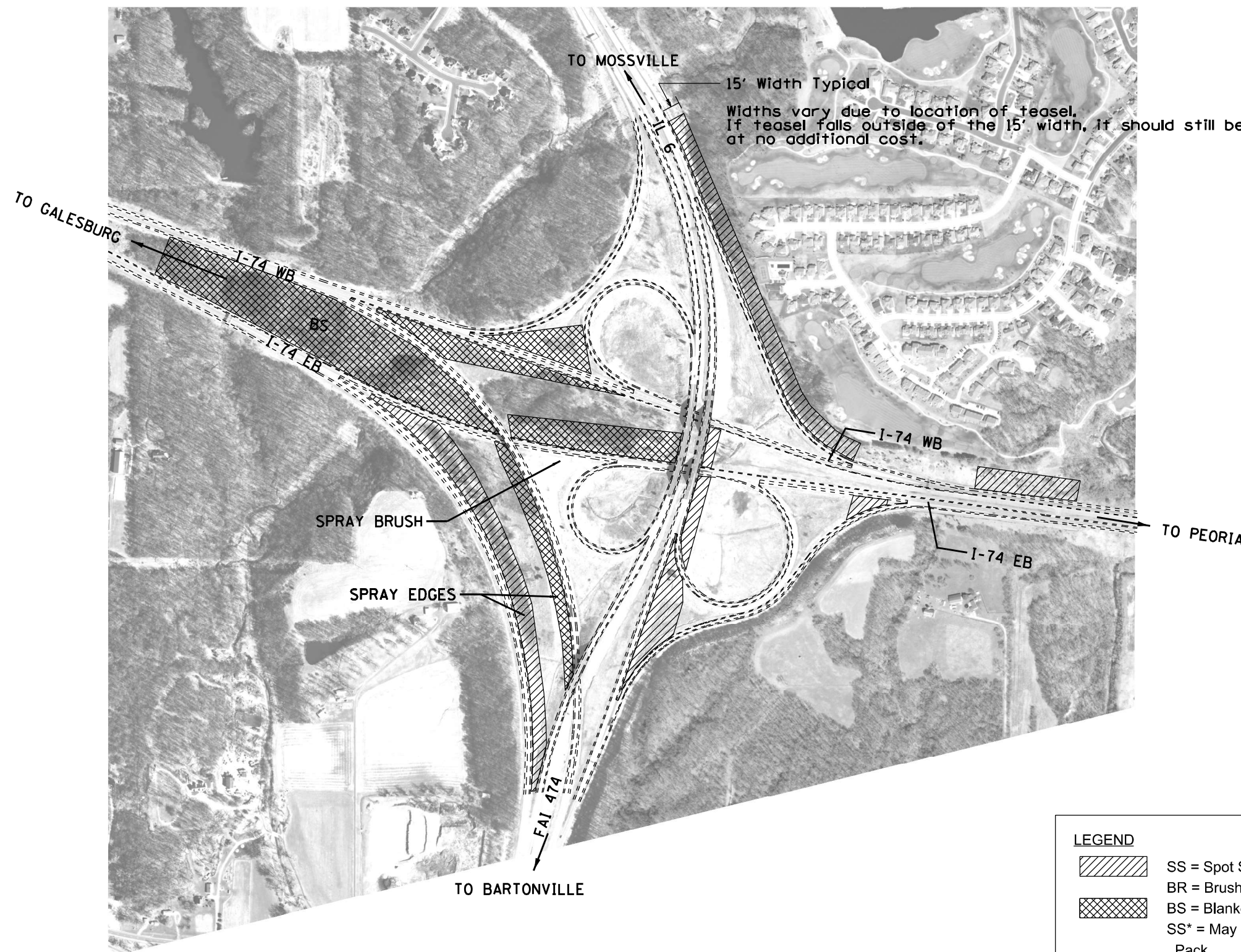
USER NAME = everst	DESIGNED - MCR	REVISED -
PLOT SCALE = 100,000' / in.	DRAWN - MCR	REVISED -
PLOT DATE = 3/23/2022	CHECKED - MCL	REVISED -
	DATE - 2/15/2022	REVISED -

STATE OF ILLINOIS
DEPARTMENT OF TRANSPORTATION

LOCATION MAP
I-74/GALE AVE. AND US 150 / IL 116 INTERCHANGES

SCALE: SHEET 4 OF 21 SHEETS STA. TO STA.

F.A. RTE.	SECTION	COUNTY	TOTAL SHEETS	SHEET NO.
VAR.	D4 WEED SPRAYING 2022	VARIOUS	21	4
			CONTRACT NO. 68G89	
		ILLINOIS FED. AID PROJECT		



LEGEND	
	SS = Spot Spraying (only teasel rosettes)
	BR = Brush
	BS = Blanket Spraying
	SS* = May Require Hand Spray/Back Pack
	TSL = Teasel
	THSL = Thistle
	CV = Crown Vetch
	FL = Fence Line
	(++) = Engineer must be present during spray operations
	NS = No Spray
	Wet = Area is Seasonally Wet
	PR = Prairie - Consult with R.E.
	Edges = Spray mowed edge only & consult with R.E.
	Heavy = Heavy Infestation
	SRRA = Spoon River Rest Area
	STP = Steep Hillside
	(*) = For Information Only

NOTE: Ariel maps are provided as a reference to the surrounding vegetation. Steep slopes in various locations.

NOT TO SCALE

MODEL: Default
FILE: Name: C:\Users\everst\Desktop\Location Map.dgn

KLINGNER & ASSOCIATES, P.C.
Engineers • Architects • Surveyors
Galesburg, Illinois
49 North Park Street
Galesburg, IL 62541
www.klingner.com

USER NAME = everst	DESIGNED - MCR	REVISED -
PLOT SCALE = 100,000' / in.	DRAWN - MCR	REVISED -
PLOT DATE = 3/23/2022	CHECKED - MCL	REVISED -
	DATE - 2/15/2022	REVISED -

STATE OF ILLINOIS
DEPARTMENT OF TRANSPORTATION

LOCATION MAP (EXIT 87A & 87B)
I-74, I-474, IL 6 INTERCHANGE

SCALE: SHEET 5 OF 21 SHEETS STA. TO STA.



F.A. RTE.	SECTION	COUNTY	TOTAL SHEETS	SHEET NO.
VAR.	D4 WEED SPRAYING 2022	VARIOUS	21	5
ILLINOIS FED. AID PROJECT			CONTRACT NO. 68G89	

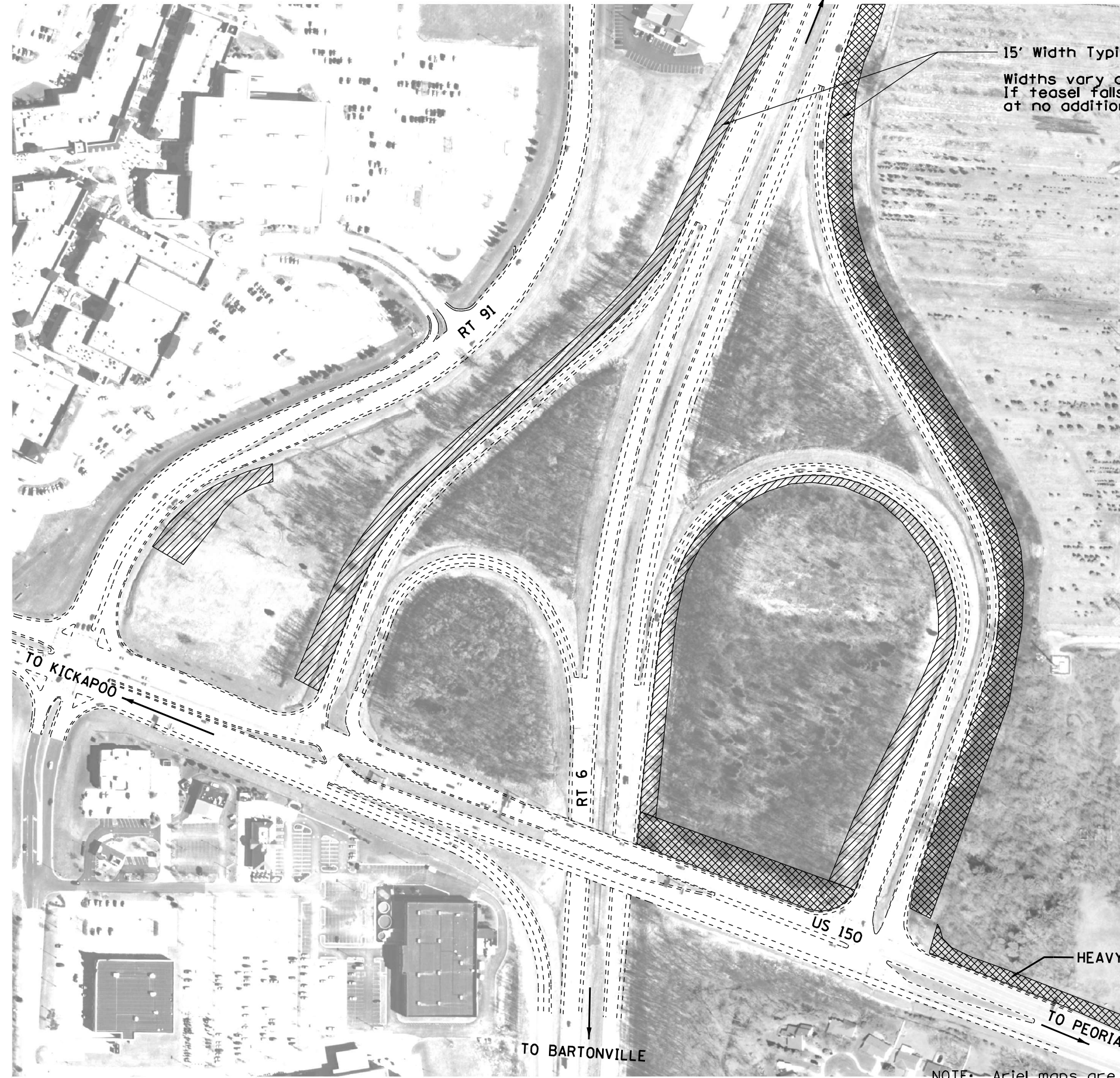
TO MOSSVILLE

15' Width Typical
 Widths vary due to location of teasel.
 If teasel falls outside of the 15' width, it should still be sprayed
 at no additional cost.



LEGEND

	SS = Spot Spraying
	BR = Brush
	BS = Blanket Spraying
	SS* = May Require Hand Spray/Back Pack
	TSL = Teasel
	THSL = Thistle
	CV = Crown Vetch
	FL = Fence Line
	(++) = Engineer must be present during spray operations
	NS = No Spray
	Wet = Area is Seasonally Wet
	PR = Prairie - Consult with R.E.
	Edges = Spray mowed edge only & consult with R.E.
	Heavy = Heavy Infestation
	SRRA = Spoon River Rest Area
	STP = Steep Hillside
	(*) = For Information Only



NOTE: Ariel maps are provided as a reference to the surrounding vegetation.

NOT TO SCALE

MODEL: Default
 FILE: NAME: C:\Users\everst\Desktop\Location Map.dgn

KLINGNER & ASSOCIATES, P.C.
 Engineers • Architects • Surveyors
 Galesburg, Illinois
49 North Park Street Galesburg, IL 62541
 309.343.4444

USER NAME = everst	DESIGNED - MCR	REVISED -
PLOT SCALE = 100,000' / in.	DRAWN - MCR	REVISED -
PLOT DATE = 3/23/2022	CHECKED - MCL	REVISED -
	DATE - 2/15/2022	REVISED -

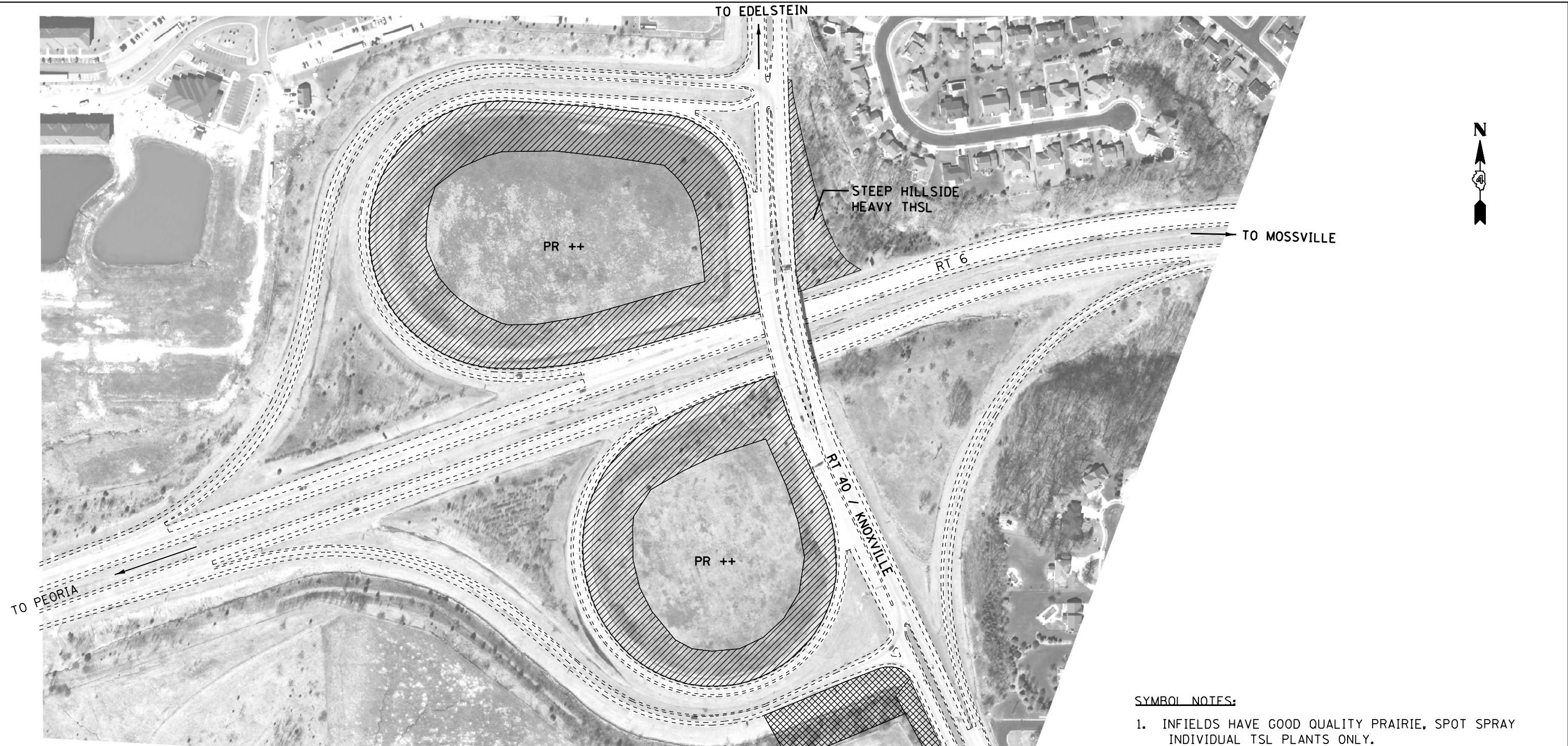
**STATE OF ILLINOIS
 DEPARTMENT OF TRANSPORTATION**

**LOCATION MAP (EXIT 2)
 RT 6 /US 150 INTERCHANGE**

SCALE: SHEET 6 OF 21 SHEETS STA. TO STA.

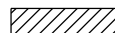

F.A. RTE.	SECTION	COUNTY	TOTAL SHEETS	SHEET NO.
VAR.	D4 WEED SPRAYING 2022	VARIOUS	21	6
ILLINOIS			FED. AID PROJECT	

CONTRACT NO. 68G89



- SYMBOL NOTES:**
1. INFIELDS HAVE GOOD QUALITY PRAIRIE, SPOT SPRAY INDIVIDUAL TSL PLANTS ONLY.
 2. AREAS HATCHED HAVE DENSE TEASEL COLONIES.

LEGEND

	SS = Spot Spraying	NS = No Spray
	BR = Brush	Wet = Area is Seasonally Wet
	BS = Blanket Spraying	PR = Prairie - Consult with R.E.
	SS* = May Require Hand Spray/Back Pack	Edges = Spray mowed edge only & consult with R.E.
	TSL = Teasel	Heavy = Heavy Infestation
	THSL = Thistle	SRRA = Spoon River Rest Area
	CV = Crown Vetch	STP = Steep Hillside
	FL = Fence Line	(*) = For Information Only
	(++) = Engineer must be present during spray operations	

NOTE: Ariel maps are provided as a reference to the surrounding vegetation. NOT TO SCALE

MODEL: Default
FILE: NAME: C:\Users\everst\Desktop\Location Map.dgn

KLINGNER & ASSOCIATES, P.C.
 Engineers • Architects • Surveyors
 Galesburg, Illinois

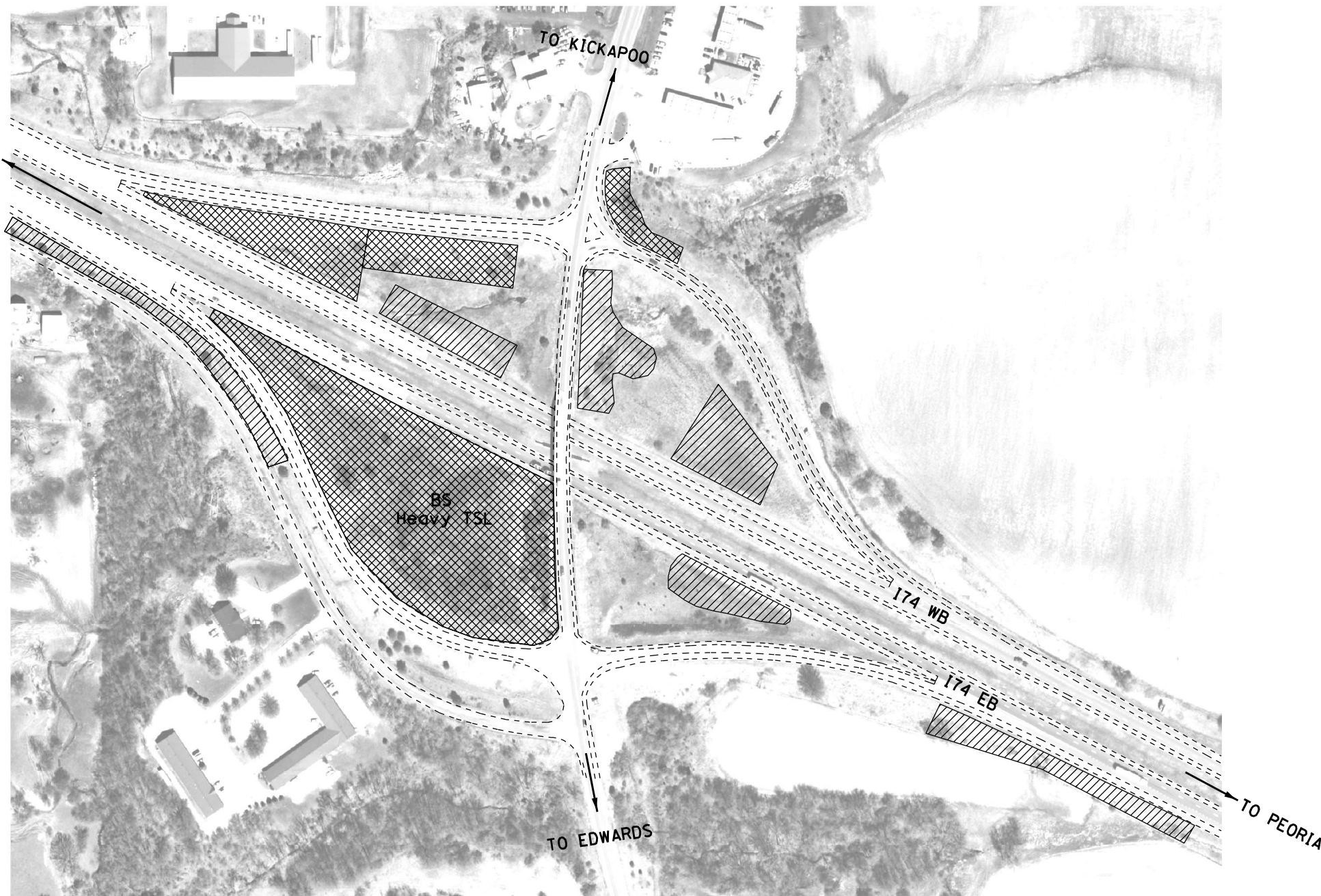
USER NAME = everst	DESIGNED - MCR	REVISED -
PLOT SCALE = 100,0000' / in.	DRAWN - MCR	REVISED -
PLOT DATE = 3/23/2022	CHECKED - MCL	REVISED -
	DATE - 2/15/2022	REVISED -

**STATE OF ILLINOIS
DEPARTMENT OF TRANSPORTATION**

**LOCATION MAP (EXIT 6)
RT 6/RT 40 /KNOXVILLE INTERCHA**

SCALE: SHEET 7 OF 21 SHEETS STA. TO STA.

F.A. RTE.	SECTION	COUNTY	TOTAL SHEETS	SHEET NO.
VAR.	D4 WEED SPRAYING 2022	VARIOUS	21	7
ILLINOIS FED. AID PROJECT			CONTRACT NO. 68G89	



LEGEND

- | | | |
|--|---|---|
| | SS = Spot Spraying | NS = No Spray |
| | BR = Brush | Wet = Area is Seasonally Wet |
| | BS = Blanket Spraying | PR = Prairie - Consult with R.E. |
| | SS* = May Require Hand Spray/Back Pack | Edges = Spray mowed edge only & consult with R.E. |
| | TSL = Teasel | Heavy = Heavy Infestation |
| | THSL = Thistle | SRRA = Spoon River Rest Area |
| | CV = Crown Vetch | STP = Steep Hillside |
| | FL = Fence Line | (*) = For Information Only |
| | (++) = Engineer must be present during spray operations | |

NOTE: Ariel maps are provided as a reference to the surrounding vegetation. NOT TO SCALE

MODEL: Default
FILE NAME: C:\Users\everst\Desktop\Location Map.dgn

KLINGNER & ASSOCIATES, P.C.
 Engineers • Architects • Surveyors
 Galesburg, Illinois
49 North Park Street
 Galesburg, IL 62541
 Phone: 309.343.1111
 Fax: 309.343.1112

USER NAME = everst	DESIGNED - MCR	REVISED -
PLOT SCALE = 100,0000' / in.	DRAWN - MCR	REVISED -
PLOT DATE = 3/23/2022	CHECKED - MCL	REVISED -
	DATE - 2/15/2022	REVISED -

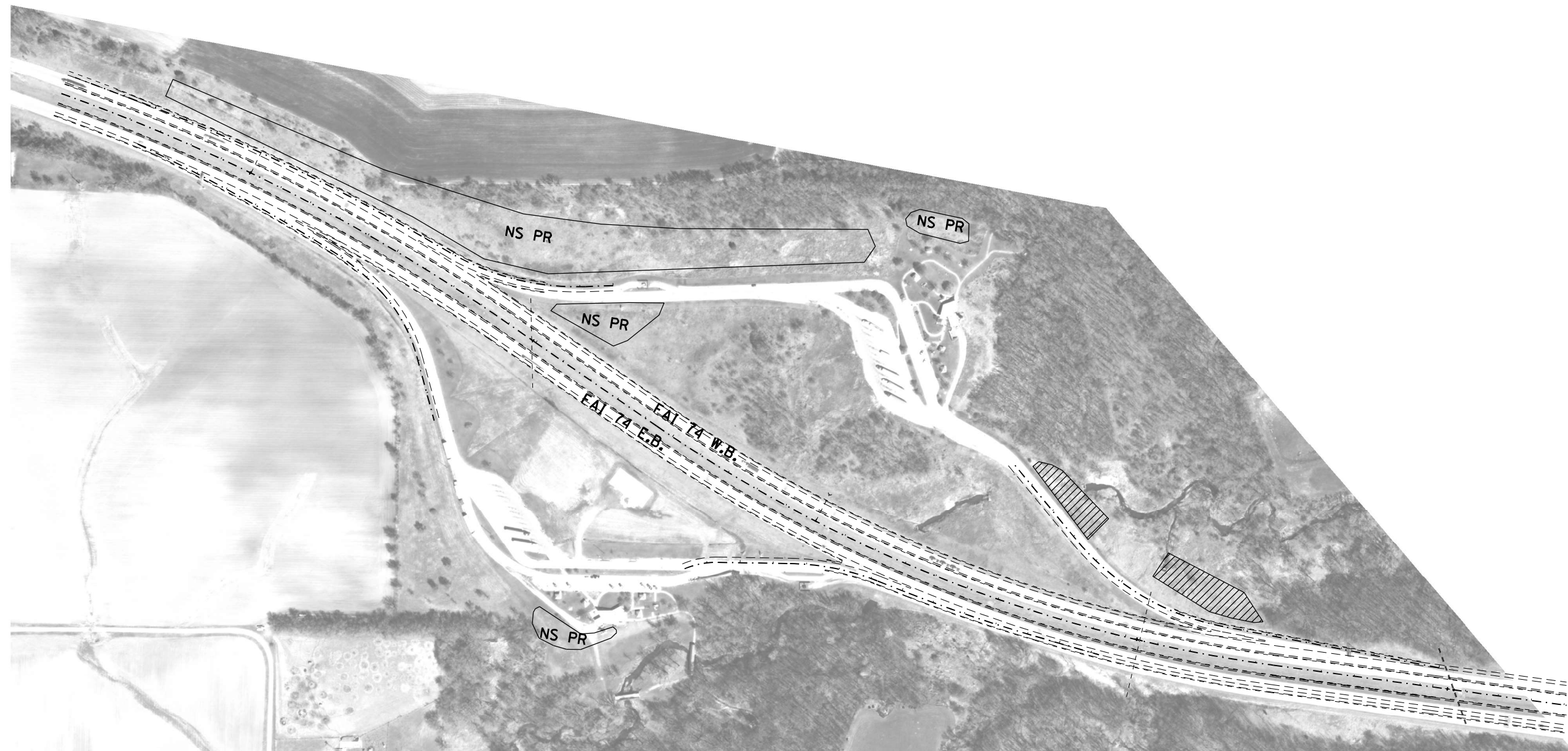
**STATE OF ILLINOIS
DEPARTMENT OF TRANSPORTATION**

**LOCATION MAP (EXIT 82)
I-74 / KICKAPOO / EDWARDS INTERC**

SCALE: SHEET 8 OF 21 SHEETS STA. TO STA.

F.A. RTE.	SECTION	COUNTY	TOTAL SHEETS	SHEET NO.
VAR.	D4 WEED SPRAYING 2022	VARIOUS	21	8
ILLINOIS			FED. AID PROJECT	

CONTRACT NO. 68G89



LEGEND



SS = Spot Spraying

BR = Brush



BS = Blanket Spraying

SS* = May Require Hand Spray/Back Pack

TSL = Teasel

THSL = Thistle

CV = Crown Vetch

FL = Fence Line

(++) = Engineer must be present during spray operations

NS = No Spray

Wet = Area is Seasonally Wet

PR = Prairie - Consult with R.E.

Edges = Spray mowed edge only & consult with R.E.

Heavy = Heavy Infestation

SRRA = Spoon River Rest Area

STP = Steep Hillside

(*) = For Information Only

NOTE: Ariel maps are provided as a reference to the surrounding vegetation.

NOT TO SCALE

MODEL: Default
FILE: N:\MIS_C\Users\everst\Desktop\Location_Map.dgn

KLINGNER & ASSOCIATES, P.C.
Engineers • Architects • Surveyors
Galesburg, Illinois
49 North Park Street
Galesburg, IL 62541
Phone: 309.343.1111
Fax: 309.343.1112
www.klingner.com

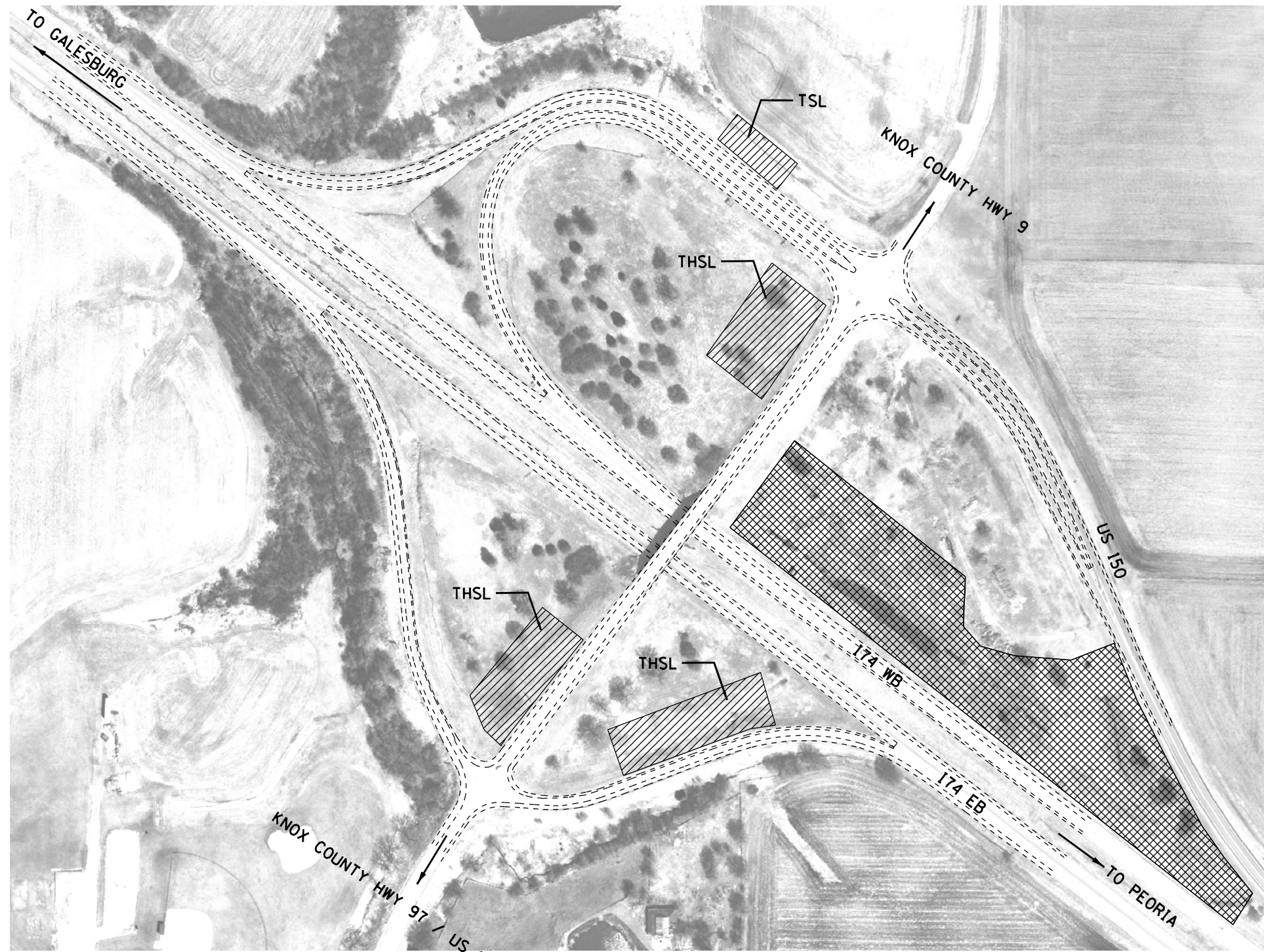
USER NAME = everst	DESIGNED - MCR	REVISED -
PLOT SCALE = 100,000' / in.	DRAWN - MCR	REVISED -
PLOT DATE = 3/23/2022	CHECKED - MCL	REVISED -
	DATE - 2/15/2022	REVISED -

**STATE OF ILLINOIS
DEPARTMENT OF TRANSPORTATION**

**LOCATION MAP (MM62)
I-74 SPOON RIVER REST AREA**

SCALE: SHEET 9 OF 21 SHEETS STA. TO STA.

F.A. RTE.	SECTION	COUNTY	TOTAL SHEETS	SHEET NO.
VAR.	D4 WEED SPRAYING 2022	VARIOUS	21	9
			CONTRACT NO. 68G89	
ILLINOIS FED. AID PROJECT				



LEGEND

- SS = Spot Spraying
- BR = Brush
- BS = Blanket Spraying
- SS* = May Require Hand Spray/Back Pack
- TSL = Teasel
- THSL = Thistle
- CV = Crown Vetch
- FL = Fence Line
- (++) = Engineer must be present during spray operations
- NS = No Spray
- Wet = Area is Seasonally Wet
- PR = Prairie - Consult with R.E.
- Edges = Spray mowed edge only & consult with R.E.
- Heavy = Heavy Infestation
- SRRA = Spoon River Rest Area
- STP = Steep Hillside
- (*) = For Information Only

NOTE: Ariel maps are provided as a reference to the surrounding vegetation. NOT TO SCALE

MODEL: Default
FILE: NAME: C:\Users\everst\Desktop\Location Map.dgn

KLINGNER & ASSOCIATES, P.C.
 Engineers • Architects • Surveyors
 Galesburg, Illinois
49 North Park Street
 Galesburg, IL 62541
 Phone: 309.343.1111
 Fax: 309.343.1112
 www.klingner.com

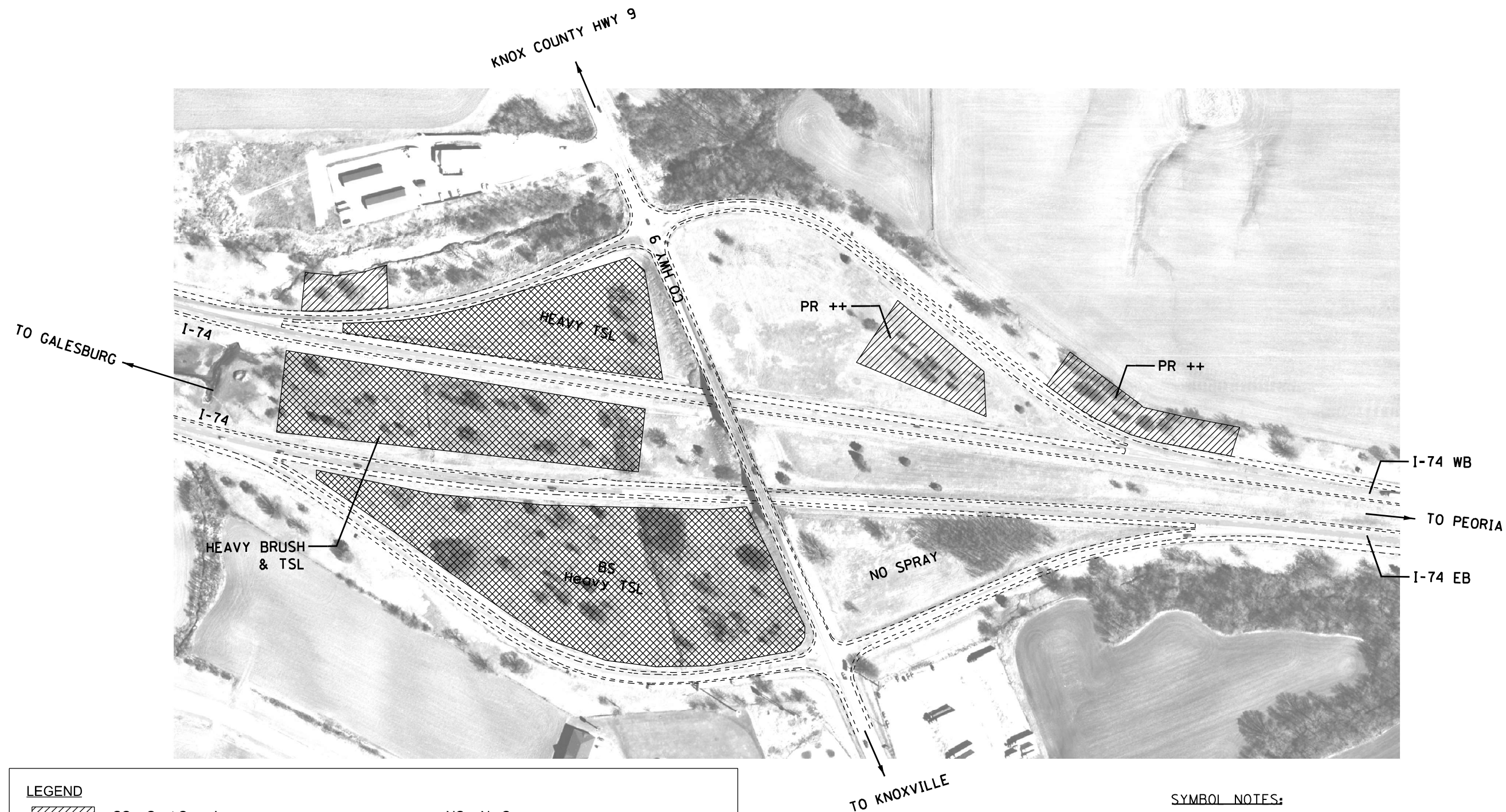
USER NAME = everst	DESIGNED - MCR	REVISED -
	DRAWN - MCR	REVISED -
PLOT SCALE = 100,000' / in.	CHECKED - MCL	REVISED -
PLOT DATE = 3/23/2022	DATE - 2/15/2022	REVISED -

**STATE OF ILLINOIS
DEPARTMENT OF TRANSPORTATION**



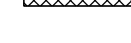
**LOCATION MAP (EXIT 54)
I-74 /CO. HWY 97 & US 150 INTE**

SCALE: SHEET 10 OF 21 SHEETS STA. TO STA.

F.A. RTE.	SECTION	COUNTY	TOTAL SHEETS	SHEET NO.
VAR.	D4 WEED SPRAYING 2022	VARIOUS	21	10
			CONTRACT NO. 68G89	
		ILLINOIS	FED. AID PROJECT	



LEGEND

- | | | |
|---|---|---|
|  | SS = Spot Spraying | NS = No Spray |
|  | BR = Brush | Wet = Area is Seasonally Wet |
|  | BS = Blanket Spraying | PR = Prairie - Consult with R.E. |
| | SS* = May Require Hand Spray/Back Pack | Edges = Spray mowed edge only & consult with R.E. |
| | TSL = Teasel | Heavy = Heavy Infestation |
| | THSL = Thistle | SRRA = Spoon River Rest Area |
| | CV = Crown Vetch | STP = Steep Hillside |
| | FL = Fence Line | (*) = For Information Only |
| | (++) = Engineer must be present during spray operations | |

SYMBOL NOTES:

1. INFIELDS ON NE & NW HAVE GOOD PRAIRIE, SPOT SPRAY TEASEL COLONIES AND INDIVIDUAL SPROUTS ONLY.
2. BLANKET SPRAY ONLY DESIGNATED AREAS.

NOTE: Ariel maps are provided as a reference to the surrounding vegetation. NOT TO SCALE

MODEL: Default
FILE: Name: C:\Users\everest\Desktop\Location Map.dgn

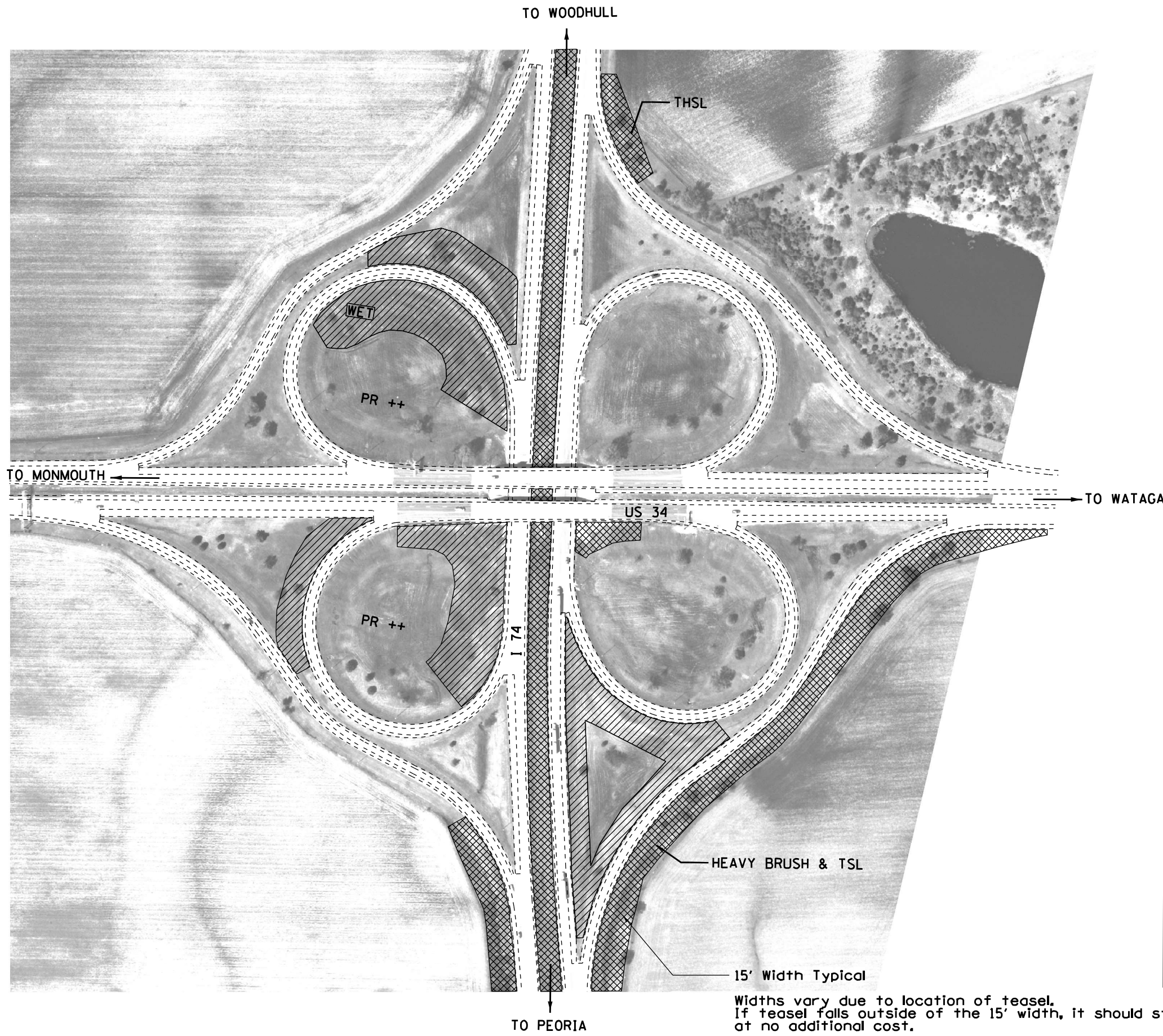
KLINGNER & ASSOCIATES, P.C.
 Engineers • Architects • Surveyors
 Galesburg, Illinois
 49 North Park Street
 Galesburg, IL 62541
 Phone: 309.343.1111
 Fax: 309.343.1112
 www.klingner.com

USER NAME = everest	DESIGNED - MCR	REVISED -
PLOT SCALE = 100,000' / in.	DRAWN - MCR	REVISED -
PLOT DATE = 3/23/2022	CHECKED - MCL	REVISED -
	DATE - 2/15/2022	REVISED -

**STATE OF ILLINOIS
DEPARTMENT OF TRANSPORTATION**

LOCATION MAP (EXIT 51) I-74 /KNOXVILLE INTERCHANGE			
SCALE:	SHEET 11 OF 21 SHEETS	STA.	TO STA.

F.A. RTE.	SECTION	COUNTY	TOTAL SHEETS	SHEET NO.
VAR.	D4 WEED SPRAYING 2022	VARIOUS	21	11
CONTRACT NO. 68G89				
ILLINOIS FED. AID PROJECT				



SYMBOL NOTES:
 1. NE & NW INFIELDS MAY BE WET.

LEGEND	
	SS = Spot Spraying
	BR = Brush
	BS = Blanket Spraying
	SS* = May Require Hand Spray/Back Pack
	TSL = Teasel
	THSL = Thistle
	CV = Crown Vetch
	FL = Fence Line
	(++) = Engineer must be present during spray operations
	NS = No Spray
	Wet = Area is Seasonally Wet
	PR = Prairie - Consult with R.E.
	Edges = Spray mowed edge only & consult with R.E.
	Heavy = Heavy Infestation
	SRRA = Spoon River Rest Area
	STP = Steep Hillside
	(*) = For Information Only

15' Width Typical
 Widths vary due to location of teasel.
 If teasel falls outside of the 15' width, it should still be sprayed at no additional cost.

NOTE: Ariel maps are provided as a reference to the surrounding vegetation.

NOT TO SCALE

MODEL: Default
 FILE: NAME: C:\Users\everst\Desktop\Location Map.dgn

KLINGNER & ASSOCIATES, P.C.
 Engineers • Architects • Surveyors
 Galesburg, Illinois

USER NAME = everst	DESIGNED - MCR	REVISED -
	DRAWN - MCR	REVISED -
PLOT SCALE = 100,000' / in.	CHECKED - MCL	REVISED -
PLOT DATE = 3/23/2022	DATE - 2/15/2022	REVISED -

**STATE OF ILLINOIS
 DEPARTMENT OF TRANSPORTATION**

**LOCATION MAP (EXIT 46B & 46A)
 I-74 /US 34 INTERCHANGE**

SCALE: SHEET 12 OF 21 SHEETS STA. TO STA.

F.A. RTE.	SECTION	COUNTY	TOTAL SHEETS	SHEET NO.
VAR.	D4 WEED SPRAYING 2022	VARIOUS	21	12
			CONTRACT NO. 68G89	
ILLINOIS FED. AID PROJECT				



15' Width Typical
Widths vary due to location of teasel.
If teasel falls outside of the 15' width, it should still be sprayed
at no additional cost.

LEGEND

- SS = Spot Spraying
- BR = Brush
- BS = Blanket Spraying
- SS* = May Require Hand Spray/Back Pack
- TSL = Teasel
- THSL = Thistle
- CV = Crown Vetch
- FL = Fence Line
- (++) = Engineer must be present during spray operations
- NS = No Spray
- Wet = Area is Seasonally Wet
- PR = Prairie - Consult with R.E.
- Edges = Spray mowed edge only & consult with R.E.
- Heavy = Heavy Infestation
- SRRA = Spoon River Rest Area
- STP = Steep Hillside
- (*) = For Information Only

NOTE: Ariel maps are provided as a reference to the surrounding vegetation. NOT TO SCALE

CITY OF GALESBURG

MODEL: Default
FILE: Name: C:\Users\everst\Desktop\Location Map.dgn

KLINGNER & ASSOCIATES, P.C.
Engineers • Architects • Surveyors
www.klingner.com
Galesburg, Illinois
49 North Park Street
920-244-4442

USER NAME = everst	DESIGNED - MCR	REVISED -
	DRAWN - MCR	REVISED -
PLOT SCALE = 100,000' / in.	CHECKED - MCL	REVISED -
PLOT DATE = 3/23/2022	DATE - 2/15/2022	REVISED -

**STATE OF ILLINOIS
DEPARTMENT OF TRANSPORTATION**

**LOCATION MAP (HENDERSON STREET
US 34 /US 150 INTERCHANGE**

SCALE:	SHEET 13 OF 21 SHEETS	STA. TO STA.
--------	-----------------------	--------------



F.A. RTE.	SECTION	COUNTY	TOTAL SHEETS	SHEET NO.
VAR.	D4 WEED SPRAYING 2022	VARIOUS	21	13
			CONTRACT NO. 68G89	
ILLINOIS FED. AID PROJECT				

ROUTE	TEAM SECTION	DIRECTION	LOCATION		COUNTY	APPROX. MILES	APPROX. ACRES		APPROX. OUNCES		NOTES
							ON-RD.*	OFF-RD.	ON-RD.*	OFF-RD.	
US 336	412	WESTBOUND	RT 336/RT 136	RT 336/RT 61 JUNCTION AND WEST TO THE LAMOINE RIVER	MCDONOUGH	5		30		180	*RIP RAP HEAVY TSL
US 336	412	EASTBOUND	RT 336/RT 136	RT 336/RT 61 JUNCTION AND WEST TO THE LAMOINE RIVER	MCDONOUGH	5		30		180	*RIP RAP HEAVY TSL
US 336	412	EASTBOUND		BYPASS, STARTING AT OVERPASS OF E 950TH, SOUTH TO INT OF RT 336/850TH	MCDONOUGH	5		40		240	*STP, BS
US 336	412	WESTBOUND		BYPASS, STARTING AT OVERPASS OF E 950TH, SOUTH TO INT OF RT 336/850TH	MCDONOUGH	5		20		120	*BS
US 24	441	WESTBOUND	WB US 24	BUS. RTES.8/24 (INTERCHANGE AND OVERPASS)	TAZEWELL			20		120	SS/BS (HEAVY)
BUS. 24/8	441	SOUTHBOUND	SB BUS. 24	McCLUGAGE RD.	TAZEWELL			20		120	BS
BUS. 24/8	441		WASHINGTON RD.	SCHOOL ST. TO N. CUMMINGS LN.	TAZEWELL			40		240	BS
US 24	441	WESTBOUND	WB US 24	RT. 8 TO GRANGE RD.	TAZEWELL			10		60	SS, CANADA THSL
US 24	441	WESTBOUND	EB US 24	US 150 TO I.C.C. (COLLEGE DRIVE)	TAZEWELL			20		120	SS, PR
US 24	441	EASTBOUND	EB US 24	COLLEGE DR. TO RT. 8	TAZEWELL			10		60	SS, PR
US 24	441	EASTBOUND	EB US 24	RT. 8 TO SPRING CREEK RD.	TAZEWELL			5		30	SS, PR
US 24	441	INTERCHANGE	@ 150/116	INTERCHANGE US 150/IL 116 (SEE DETAIL)	TAZEWELL	BRUSH		40		240	BS, TSL, THSL
I-155	441	MEDIAN		MM 10-22; (MEDIAN)	TAZEWELL	12		10		60	SS, MEDIAN, Δ
I-155	441	SOUTHBOUND		MM 31.5-31.9 SB	TAZEWELL	0.4		3		18	HEAVY TSL BEFORE OVERPASS
I-155	441	SW INFIELDS & RAMP		MM 31 EXIT (BIRCHWOOD ST)	TAZEWELL			20		120	SS, PR, HEAVY TSL
I-155	441	SOUTHBOUND		MM 30.9 SB	TAZEWELL			1		6	SS
I-155	441	SOUTHBOUND		EXIT 30 QUEENWOOD (NW INFIELD & RAMP)	TAZEWELL			5		30	SS
I-155	441	SOUTHBOUND		MM 29 MAIN ST ENTRANCE RAMP SB INFIELD	TAZEWELL			5		30	SS
I-155	441	INFIELDS		MM 28 EXIT (BROADWAY RD. NW & SW INFIELDS)	TAZEWELL			5		30	SS
I-155	441	SOUTHBOUND		NO SPRAY (MM 27.9 TO MM 25.1)							NS
I-155	441	INFIELDS		MM 25 EXIT (NW & SW INFIELD & RAMPS TO IL 9)	TAZEWELL			5		30	SS
SUB-TOTAL										2034	

SYMBOL NOTES

AREA OF SS (SPOT SPRAY). SPOT SPRAY TEASEL COLONIES AND INDIVIDUAL SPROUTS ONLY. ABSOLUTELY NO BLANKET SPRAY
 *US 336 CONTACT FIELD ENGINEER OR OPERATIONS SUPERVISOR PRIOR TO BEGINNING SPRAY ACTIVITIES

LEGEND

	SS = Spot Spraying	NS = No Spray
	BR = Brush	Wet = Area is Seasonally Wet
	BS = Blanket Spraying	PR = Prairie - Consult with R.E.
	SS* = May Require Hand Spray/Back Pack	Edges = Spray mowed edge only & consult with R.E.
	TSL = Teasel	Heavy = Heavy Infestation
	THSL = Thistle	SRRA = Spoon River Rest Area
	CV = Crown Vetch	STP = Steep Hillside
	FL = Fence Line	(*) = For Information Only
	(++) = Engineer must be present during spray operations	



MODEL: D:\p\h\...
 FILE NAME: G:\1\files\21081_IDOT - DIST 4 - RTB 201-023\Work_Order_04 - Eastern_D418_Transportation\Weed_Spraying\CAD_Sheets\Schedule_of_Quantities.dwg

ROUTE	TEAM SECTION	DIRECTION	LOCATION	COUNTY	APPROX. MILES	APPROX. ACRES		APPROX. OUNCES		NOTES
						ON-RD. *	OFF-RD.	ON-RD. *	OFF-RD.	
I-155	441	SB INFIELDS/RAMPS	NO NOT BLANKET SPRAY	MM 22 EXIT(TOWNLINE RD NW & SW INFIELDS & RAMPS)	TAZEWELL		15		90	SS, PR, HEAVY TSL
I-155	441	SOUTHBOUND		MM 20-19 SB	TAZEWELL	1	3		18	STP, SS
I-155	441	SOUTHBOUND		MM 19.5 SB (MACKINAW RIVER)	TAZEWELL		10		60	BR, SS
I-155	441	INFIELDS/RAMPS		HOPEDDALE EXIT 19 (NW & SW INFIELDS & RAMPS)	TAZEWELL		15		90	SS, PR
I-155	441	SOUTHBOUND		MM 18.5 SB	TAZEWELL		0.5		3	SS
I-155	441	SOUTHBOUND		MM 17	TAZEWELL		1		6	STP, PR, SS
I-155	441	SOUTHBOUND		MM 17.2 SB	TAZEWELL		2		12	SS
I-155	441	INFIELDS/RAMPS		MM 15 EXIT (DELAVAN NW & SW INFIELDS & RAMPS)	TAZEWELL		10		60	SS
I-155	441	INFIELDS		AT EXIT 10 (US HWY 136 ALL 4 INFIELDS & RAMPS)	TAZEWELL		9		54	SS
I-155	441	NORTHBOUND		MM 10.1 NB RAMP SIDES	TAZEWELL		3		18	SS, FL
I-155	441	NB/INFIELDS		EXIT 15 (DELAVAN SE & NE INFIELDS/RAMPS)	TAZEWELL		5		30	
I-155	441	NORTHBOUND		MM 18-19 NB(EDGES & FENCE)	TAZEWELL	1	10		60	SS, FL
I-155	441	NB/INFIELDS		HOPEDDALE EXIT 19 (SE/NE INFIELDS/RAMPS)	TAZEWELL		20		120	PR, SS
I-155	441	NORTHBOUND		MM 19.1-20 NB (FENCELINE)	TAZEWELL	1	15		90	SS
I-155	441	NORTHBOUND		MM 20-22 NB	TAZEWELL	2	1		6	SS, FL
I-155	441	NB/INFIELDS		EXIT 22 TOWNLINE RD (SE/NE INFIELDS/RAMPS)	TAZEWELL		15		90	HEAVY TSL
I-155	441	NORTHBOUND		MM 22-25 NB	TAZEWELL	3				NS (PRAIRE)
I-155	441	INFIELDS/RAMP		EXIT 25 (SE/NE INFIELDS/RAMPS TO IL 9)	TAZEWELL		1		6	SS
SUB-TOTAL									813	

SYMBOL NOTES

Δ NO SPRAY MM 22-29 (MEDIAN)

LEGEND

-  SS = Spot Spraying
-  BS = Blanket Spraying
- SS* = May Require Hand Spray/Back Pack
- TSL = Teasel
- THSL = Thistle
- CV = Crown Vetch
- FL = Fence Line
- (++) = Engineer must be present during spray operations
- NS = No Spray
- Wet = Area is Seasonally Wet
- PR = Prairie - Consult with R.E.
- Edges = Spray mowed edge only & consult with R.E.
- Heavy = Heavy Infestation
- SRRA = Spoon River Rest Area
- STP = Steep Hillside
- (*) = For Information Only

MODEL: D:\p\h\k...
 FILE NAME: G:\3\Files\21081_IDOT - DIST 4 - PFB 201623\Work_Order_04 - Eastern_D418_Transportation\Weed_Spraying\CAD_Sheets\Schedule_of_Quantities.dwg

KLINGNER & ASSOCIATES, P.C.
 Engineers • Architects • Surveyors
 Galesburg, Illinois
 40 North Prairie Street
 Galesburg, IL 62541

USER NAME = mirch	DESIGNED - MCR	REVISED -
	DRAWN - MCR	REVISED -
PLOT SCALE = 100,0000' / in.	CHECKED - MCL	REVISED -
PLOT DATE = 3/7/2022	DATE - 2/15/2022	REVISED -

**STATE OF ILLINOIS
DEPARTMENT OF TRANSPORTATION**

SCHEDULE OF QUANTITIES			
F.A. RTE.	SECTION	COUNTY	TOTAL SHEETS
VAR.	D4 WEED SPRAYING 2022	VARIOUS	21
			15
CONTRACT NO. 68G89			
SCALE:	SHEET 15 OF 21 SHEETS	STA.	TO STA.



ILLINOIS	FED. AID PROJECT
----------	------------------

ROUTE	TEAM SECTION	DIRECTION	LOCATION	COUNTY	APPROX. MILES	APPROX. ACRES		APPROX. OUNCES		NOTES
						ON-RD. *	OFF-RD.	ON-RD. *	OFF-RD.	
I-155	441	NB/INFIELDS	I-155	EXIT 28 BROADWAY RD (SE/NE INFIELDS/RAMPS)	TAZEWELL		5		30	SS
I-155	441	INFIELDS/EXIT	I-155	EXIT 29 (MAIN ST. EXIT RAMP & INFIELD)	TAZEWELL		10		60	STP, BS
I-155	441	INFIELD/RAMP	I-155	MM 30 ENTRANCE RAMP (QUEENWOOD INFIELD & RAMP)	TAZEWELL		2		12	SS
I-155	441	NORTHBOUND	I-155	MM 30.1-30.9 NB	TAZEWELL	1	10		60	BS
I-155	441	N.E. INFIELDS	I-155	BIRCH WOOD EXIT 31 NE INFIELDS & RAMPS	TAZEWELL	1	10		60	BS, SS
VFW RD	441	EAST & WEST B	VETERANS DRIVE	IL 29 TO 14TH STREET	TAZEWELL	2	15		90	BS, THSL & TSL
I-74	441	EASTBOUND	I-74	MM 94 (UNDERPASS) EAST PEORIA (HEAD DOWN RIVER ON RAMP TO GET TO CAMP ST.)	TAZEWELL	UNDERPASSES TO CEDAR ST.	2		12	SS, THSL
I-74	441	EASTBOUND	I-74	MM 94/AT EXIT 94 (RAMP TO WASHINGTON ST)	TAZEWELL		10		60	SS
I-74	441	EASTBOUND	I-74	MM 94/ENTRANCE RAMP TO I-74 (CAMP ST. INFIELD & EB INFIELD)	TAZEWELL	BEHIND JERSEY WALLS	3		18	SS
I-74	441	EASTBOUND	I-74	MM 95-96***	TAZEWELL		20		120	BS
I-74	441	RAMP	I-74	IL 8 EXIT EX 95/96	TAZEWELL		5		30	SS
I-74	441	EASTBOUND	I-74	MM 96 EXIT 96 (INFIELD)	TAZEWELL	EXIT INFIELD	8		48	INFIELD EXIT
I-74	441	EASTBOUND	I-74	MM 96-96.5	TAZEWELL	0.5	1		6	EDGES, BR
I-74	441	EASTBOUND	I-74	MM 98-97 EB	TAZEWELL	1	5		30	SS
I-74	441	EASTBOUND	I-74	MM 99-100 (INFIELDS) 474 INTERCHANGE	TAZEWELL		40		240	SS
I-74	441	EASTBOUND	I-74	MM 100-101 NORTH SIDE N OF RAMPS	TAZEWELL		20		120	WET, BS
I-74	441	EASTBOUND	I-74	MM 101 (I-155)	TAZEWELL		1		6	EDGES
I-74	441	INFIELDS/RAMP	I-74	MM 102 MORTON (SOUTHSIDE)	TAZEWELL	EXIT INFIELD	10		60	RAMPS, THSL, BS
I-74	441	INFIELDS/RAMP	I-74	MM 103-104 (EXIT INFIELD)	TAZEWELL		1		6	SS
I-74	441	MEDIAN	I-74	MM 104-106 (MEDIAN)	TAZEWELL	MEDIAN	1		6	SS
I-74	441	EB/INFIELDS & RAMPS	I-74	MM EXIT 112 (IL 117)	WOODFORD	EXIT INFIELD	8		48	WET, RAMP
I-74	441	INFIELDS/RAMPS	I-74	MM 120 (RAMPS/INFIELD)	MCLEAN		20		120	STP
I-74	441	WB INFIELDS & RAMPS	I-74	MM EXIT 112 (IL 117)	TAZEWELL		5		30	HEAVY TSL EXIT RAMP
I-474	441	INFIELDS	I-474	MM 15 (INFIELDS)	TAZEWELL	INFIELDS	8		48	WET, STP
I-474	441	WESTBOUND	I-474	MM12 (NR OVERPASS)	TAZEWELL		4		24	SS
I-474	441	WESTBOUND	I-474	MM 9.5 NS	TAZEWELL		2		12	STP
I-474	441	WESTBOUND	I-474	EXIT 9 (TO IL 29, RAMPS, EDGES OF INFIELD)	TAZEWELL		5		30	STP, WET
SUB-TOTAL									1386	

SYMBOL NOTES

**HEAD DOWN RIVER ON RAMP TO GET TO CAMP ST.

LEGEND

	SS = Spot Spraying	NS = No Spray
	BR = Brush	Wet = Area is Seasonally Wet
	BS = Blanket Spraying	PR = Prairie - Consult with R.E.
	SS* = May Require Hand Spray/Back Pack	Edges = Spray mowed edge only & consult with R.E.
	TSL = Teasel	Heavy = Heavy Infestation
	THSL = Thistle	SRRA = Spoon River Rest Area
	CV = Crown Vetch	STP = Steep Hillside
	FL = Fence Line	(*) = For Information Only
	(++) = Engineer must be present during spray operations	

MODEL: D:\p\h\l...
 FILE NAME: G:\1\files\21081_IDOT - DIST 4 - P7B 201-023\Work_Spraying\CAD_Sheets\Schedule of Quantities.dwg

KLINGNER & ASSOCIATES, P.C.
 Engineers • Architects • Surveyors
 Galesburg, Illinois
 Quincy, IL, Hannibal, MO
 Burlington, IA, Peoria, IL, Columbia, MO
 Evansville, IN, Columbus, IA

USER NAME = mirch	DESIGNED - MCR	REVISED -
	DRAWN - MCR	REVISED -
PLOT SCALE = 100,0000' / in.	CHECKED - MCL	REVISED -
PLOT DATE = 3/7/2022	DATE - 2/15/2022	REVISED -

**STATE OF ILLINOIS
DEPARTMENT OF TRANSPORTATION**

SCHEDULE OF QUANTITIES



SCALE:	SHEET 16 OF 21 SHEETS	STA.	TO STA.
--------	-----------------------	------	---------

F.A. RTE.	SECTION	COUNTY	TOTAL SHEETS	SHEET NO.
VAR.	D4 WEED SPRAYING 2022	VARIOUS	21	16
ILLINOIS FED. AID PROJECT			CONTRACT NO. 68G89	

ROUTE	TEAM SECTION	DIRECTION	LOCATION	COUNTY	APPROX. MILES	APPROX. ACRES		APPROX. OUNCES		NOTES
						ON-RD. *	OFF-RD.	ON-RD. *	OFF-RD.	
I-474	432	MEDIAN	I-474	PEORIA	7		20		120	SS
I-474	432	WESTBOUND	I-474	PEORIA			10		60	WET, SS, PR
I-474	432	WESTBOUND	I-474	PEORIA			24		144	TSL
I-474	432	WESTBOUND	I-474	PEORIA			10		60	
I-474	432	WESTBOUND	I-474	PEORIA	1.5		10		60	
I-474	432	INFIELDS/RAMPS	I-474	PEORIA			20		120	STP
I-474	432	EASTBOUND	I-474	PEORIA	8.25		5		30	SS
I-474	432	EASTBOUND	I-474	PEORIA			10		60	TSL
I-474	432	EASTBOUND	I-474	PEORIA			24		144	TSL
I-474	432	EASTBOUND	I-474	PEORIA			10		60	SS, PR
IL 6	432	INFIELDS/RAMPS	IL 6/I-74/I-474	PEORIA			60		360	STP, SS
IL 6	432	MEDIAN	IL 6	PEORIA	5		10		60	SS
IL 6	432	NORTHBOUND	IL 6	PEORIA	3		9		54	SS, WET DITCH
IL 6	432	RAMPS	IL 6	PEORIA			5		30	EDGES
IL 6	432	INFIELDS/RAMPS	IL 6	PEORIA			25		150	EDGES, PR
IL 6	432	INFIELDS/RAMPS	IL 6	PEORIA			10		60	EDGES++, SPOT SPRAY MIDDLE
IL 6	432	NORTHBOUND	IL 6	PEORIA			5		30	STP, HEAVY TSL
IL 6	432	NORTHBOUND	IL 6	PEORIA	1		20		120	WET AREAS, TSL
IL 6	432	INTERSECTION	IL 6	PEORIA			20		120	BS, HEAVY TSL
IL 6 SB	432	SOUTHBOUND	IL 6 SB	PEORIA			60		360	SS
IL 6 SB	432	SOUTHBOUND	IL 6 SB	PEORIA	1		4		24	STP, SS*
IL 6 SB	432	SOUTHBOUND	IL 6 SB	PEORIA	1		10		60	SS
IL 6 SB	432	SOUTHBOUND	IL 6 SB	PEORIA	2		10		60	SS, WET DITCH
IL 40	432		IL 40(NB,SB)	PEORIA			20		120	SS (VERY SPOTTY) EDGES
SUB-TOTAL									2466	

SYMBOL NOTES

**VERY GOOD PRAIRIE NW QUADRANT. SPRAY TSL COLONIES ONLY. NO BLANKET SPRAY
 ***VERY STEEP; PULL 350 FT. OF HOSE AND HAND SPRAY

LEGEND	
	SS = Spot Spraying
	BR = Brush
	BS = Blanket Spraying
	SS* = May Require Hand Spray/Back Pack
	TSL = Teasel
	THSL = Thistle
	CV = Crown Vetch
	FL = Fence Line
	(++) = Engineer must be present during spray operations
	NS = No Spray
	Wet = Area is Seasonally Wet
	PR = Prairie - Consult with R.E.
	Edges = Spray mowed edge only & consult with R.E.
	Heavy = Heavy Infestation
	SRRA = Spoon River Rest Area
	STP = Steep Hillside
	(*) = For Information Only

MODEL: D:\p\h\l...
 FILE NAME: G:\1\files\21081_IDOT - DIST 4 - PTD 201623\Work_Spraying\CAD Sheets\Schedule of Quantities.dwg
 Galesburg, Illinois
 40 North Prairie Street
 304.543.4442

ROUTE	TEAM SECTION	DIRECTION	LOCATION		COUNTY	APPROX. MILES	APPROX. ACRES		APPROX. OUNCES		NOTES
							ON-RD. *	OFF-RD.	ON-RD. *	OFF-RD.	
US 150	432		US 150	GLEN ST.-WILLOW KNOLLS DR.	PEORIA	6		20		120	SS
US 24	432		US 24	2 MI N. OF IL 9 TO BANNER, MEDIAN	PEORIA	17		100		600	BR,SS
IL 9	432		IL 9	US 24-IL RIVER (NEAR BRIDGES)	PEORIA	5		20		120	SS;EDGES
I-74	441	EAST B. SOUTH HILL	I-74	FROM ELIS STREET TO NORTH STREET HILLSIDE	PEORIA			10		60	THSL,BS
I-74	432	WESTBOUND	I-74	MM 92-94 (DOWNTOWN PEORIA PLANTINGS)	PEORIA						NS
I-74	432	WESTBOUND	I-74	EXIT 92/MM 92.5	PEORIA	0.5		5		30	BR,STP
I-74	432	WESTBOUND	I-74	MM 92 EB	PEORIA			1		6	SS,NS BUSHES
I-74	432	WESTBOUND	I-74	EXIT 91 (UNIVERSITY)	PEORIA			20		120	SS,CV,THSL,STP
I-74	432	WESTBOUND	I-74	EXIT 90 (GALE AVE.)(PAVED GUTTERS)(SEE DETAIL)	PEORIA			10		60	BR,SS*(SEE DETAIL)
I-74	432	WESTBOUND	I-74	MM 90-89*****	PEORIA			1		6	SS,HEAVY
I-74	432	WESTBOUND	I-74	EXIT 89 & 88	PEORIA			10		60	STP
I-74	432	WESTBOUND	I-74	MM 89-91 EB	PEORIA			10		60	
I-74	432	WESTBOUND	I-74	EXIT 87 (RAMPS)(SEE DETAIL)	PEORIA			20		120	PR,STP
I-74	432	WESTBOUND	I-74	MM 87-88 (MEDIAN)	PEORIA			1		6	SS
I-74	432	WESTBOUND	I-74	MM 85 EB/WB	PEORIA	PERENNIAL BED	NO SPRAY UNDER HIGH TENSION POWER LINE ++				NS++(PRAIRIE & PERENNIALS)
I-74	432	WESTBOUND	I-74	MM 88-84 WB	PEORIA	4		12		72	EDGES
I-74	432	WESTBOUND	I-74	SPRAY BRUSH ON GILLES RD & HEINZ LN OVERPASSES	PEORIA			10		60	
I-74	432	WESTBOUND	I-74	MM 87-86 (MEDIAN)	PEORIA			10		60	WET,MEDIAN
I-74	432	WESTBOUND	I-74	MM 82-80 EB	PEORIA	2		5		30	
I-74	432	WESTBOUND	I-74	EXIT 82 (KICKAPOO/EDWARDS)(SEE DETAIL)	PEORIA			15		90	PR,SS,EDGES++
I-74	432	WESTBOUND	I-74	MM 76-82 (MEDIAN)	PEORIA	8		20		120	SS,MEDIAN EDGES
I-74	432	WESTBOUND	I-74	MM 75-82	PEORIA	7		10		60	BR,SS,FL
I-74	432	WESTBOUND	I-74	EXIT 75	PEORIA			10		60	BS,N/W QUAD
I-74	432	WESTBOUND	I-74	MM 71-75 EB	PEORIA	4		10		60	SS,EDGES
I-74	432	WESTBOUND	I-74	MM 71-68 (MEDIAN SHOULDER)	PEORIA	10		20		120	SS
I-74	432	WESTBOUND	I-74	EB MM 74 WB (CANADA THSTL)	PEORIA			3		18	HILLSIDE (BY SIGN)
I-74	432	WESTBOUND	I-74	EB EXIT 71 (RAMPS/EDGES)	PEORIA			8		48	SS RAMPS/EDGES,PR INFIELDS++
SUB-TOTAL										2166	

SYMBOL NOTES

*****LARGE AMOUNT OF TSL AND BRUSH IN NE QUADRANT. WILL REQUIRE HAND SPRAYING

LEGEND



SS = Spot Spraying

BR = Brush



BS = Blanket Spraying

SS* = May Require Hand Spray/Back Pack

TSL = Teasel

THSL = Thistle

CV = Crown Vetch

FL = Fence Line

(++) = Engineer must be present during spray operations

NS = No Spray

Wet = Area is Seasonally Wet

PR = Prairie - Consult with R.E.

Edges = Spray mowed edge only & consult with R.E.

Heavy = Heavy Infestation

SRRA = Spoon River Rest Area

STP = Steep Hillside

(*) = For Information Only

MODEL: D:\p\h\...
 FILE NAME: C:\Users\j13081\DOT - DIST 4 - PTD 201\023\Work - Spraying\CAD Sheets\Schedule of Quantities.dgn

KLINGNER & ASSOCIATES, P.C.
 Engineers • Architects • Surveyors
 Galesburg, Illinois
 Quincy, IL, Hannibal, MO
 Burlington, IA, Peoria, IL, Columbia, MO
 Des Moines, IA, Columbus, IL

USER NAME = mirch	DESIGNED - MCR	REVISED -
	DRAWN - MCR	REVISED -
PLOT SCALE = 100,0000' / in.	CHECKED - MCL	REVISED -
PLOT DATE = 3/7/2022	DATE - 2/15/2022	REVISED -

**STATE OF ILLINOIS
DEPARTMENT OF TRANSPORTATION**

SCHEDULE OF QUANTITIES

SCALE: SHEET 18 OF 21 SHEETS STA. TO STA.

F.A. RTE.	SECTION	COUNTY	TOTAL SHEETS	SHEET NO.
VAR.	D4 WEED SPRAYING 2022	VARIOUS	21	18
ILLINOIS FED. AID PROJECT			CONTRACT NO. 68G89	

ROUTE	TEAM SECTION	DIRECTION	LOCATION		COUNTY	APPROX. MILES	APPROX. ACRES		APPROX. OUNCES		NOTES
							ON-RD. *	OFF-RD.	ON-RD. *	OFF-RD.	
1-74	421	WESTBOUND	1-74	MM 62-69	KNOX/PEORIA	7		40		240	BR, FL
1-74	421	WESTBOUND	1-74	MM 62 WB SRRA** (SEE DETAIL)	KNOX			5		30	PR, TSL, STP++
1-74	421	WESTBOUND	1-74	WB MM 61-60	KNOX	1		5		30	
1-74	421	WESTBOUND	1-74	NO SPRAY @ WB MM 58	KNOX	PERENNIAL BED					PERENNIAL BED, SP MM 58
1-74	421	WESTBOUND	1-74	MM 59.5-58	KNOX	1.5		5		30	SS
1-74	421	WESTBOUND	1-74	MM 54.8	KNOX			1		6	
1-74	421	INFIELDS/RAMPS	1-74	EXIT 54, MEDIAN, (SEE DETAIL)	KNOX			20		120	THSL, TSL
1-74	421	WESTBOUND	1-74	MM 51.5-50 (MEDIAN)	KNOX	1.5		5		30	SS, MEDIAN
1-74	421	WESTBOUND	1-74	EXIT 51 (SEE DETAIL) KNOXVILLE	KNOX			40		240	TSL, PR++
1-74	421	WESTBOUND	1-74	MM 49-45 (MEDIAN)	KNOX	4		20		120	SS
1-74	421	EAST/WEST BOUND	1-74	EXIT 48 A & B RAMPS AND INFIELDS	KNOX			40		240	BS, HVY TSL EAST B RAMP
1-74	421	WESTBOUND	1-74	EXIT 46 A & 48 B (SEE DETAIL)***	KNOX			20		120	SS, PR++
1-74	421	WESTBOUND	1-74	MM 46-47.5	KNOX	1.5		3		18	
1-74	421	WESTBOUND	1-74	MM 46-44 (MEDIAN)	KNOX	2		10		60	SS/MEDIANS
1-74	421	WESTBOUND	1-74	MM 39.2	KNOX			3		18	MILLSIDE
1-74	421	E & W BOUND	1-74	HENDERSON CREEK	KNOX			20		120	SS
1-74	421	MEDIAN	1-74	MM 40-39 (MEDIAN)	KNOX	1		20		120	SS/MEDIANS
1-74	421	WESTBOUND	1-74	MM 37.5-34.9	KNOX	2.6		5		30	FL
1-74	421	E & W BOUND	1-74	POPE CREEK	KNOX			20		120	SS
1-74	421	MEDIAN	1-74	MM 36-34.5 (MEDIAN)	KNOX	2.5		20		120	SS/MEDIANS
1-74	421	WESTBOUND	1-74	MM 33.5	KNOX			1		6	HILLSIDE
1-74	421	INFIELDS/RAMPS	1-74	EXIT 32 WOODHULL****	KNOX			40		240	SS, PR++
1-74	421	EASTBOUND	1-74	MM 32.5-33.1	KNOX	1.5		5		30	SS
1-74	421	EASTBOUND	1-74	MM 35-36 EB (MEDIAN)	KNOX	1		20		120	MEDIAN
1-74	421	EASTBOUND	1-74	MM 36.1	KNOX			2		12	SS
SUB-TOTAL										2220	

SYMBOL NOTES

**NO SPRAY NW QUADRANT OF WB SRRA GOOD PRAIRIE
 ***SPOT SPRAY TSL ROSETTE PATCHES

LEGEND



SS = Spot Spraying

BR = Brush



BS = Blanket Spraying

SS* = May Require Hand Spray/Back Pack

TSL = Teasel

THSL = Thistle

CV = Crown Vetch

FL = Fence Line

(++) = Engineer must be present during spray operations

NS = No Spray

Wet = Area is Seasonally Wet

PR = Prairie - Consult with R.E.

Edges = Spray mowed edge only & consult with R.E.

Heavy = Heavy Infestation

SRRA = Spoon River Rest Area

STP = Steep Hillside

(*) = For Information Only

MODEL: D:\p\h\l...
 FILE NAME: G:\3\11081_IDOT_DIST_4 - RTB_201_023\Work_Order_04 - Eastern_D418_Transportation\Weed_Spraying\CAD_Sheets\Schedule_of_Quantities.dwg

KLINGNER & ASSOCIATES, P.C.
 Engineers • Architects • Surveyors
 Galesburg, Illinois
 40 North Payne Street
 Galesburg, IL 62541

USER NAME = mirch	DESIGNED - MCR	REVISED -
	DRAWN - MCR	REVISED -
PLOT SCALE = 100,0000' / in.	CHECKED - MCL	REVISED -
PLOT DATE = 3/7/2022	DATE - 2/15/2022	REVISED -

**STATE OF ILLINOIS
 DEPARTMENT OF TRANSPORTATION**

SCHEDULE OF QUANTITIES



SCALE: SHEET 19 OF 21 SHEETS STA. TO STA.

F.A. RTE.	SECTION	COUNTY	TOTAL SHEETS	SHEET NO.
VAR.	D4 WEED SPRAYING 2022	VARIOUS	21	19
ILLINOIS FED. AID PROJECT			CONTRACT NO. 68G89	

ROUTE	TEAM SECTION	DIRECTION	LOCATION		COUNTY	APPROX. MILES	APPROX. ACRES		APPROX. OUNCES		NOTES
							ON-RD. *	OFF-RD.	ON-RD. *	OFF-RD.	
I-74	421	EASTBOUND	I-74	EXIT 46 TO US 34 (SE & SW INFIELDS/RAMPS) (SEE DETAIL)	KNOX/PEORIA			40		240	WET, SS, ++
US 34	421	EASTBOUND	US 34	74 EAST TO ONEIDA (MEDIAN IN 4 LN)	KNOX	15		20		120	SS, PR
US 34	421	INFIELDS/RAMPS	US 34	SEMINARY STREET EXIT (4 INFIELDS/RAMPS)	KNOX			20		120	SS
US 34	421	INFIELDS/RAMPS	US 34	HENDERSON STREET EXIT (SEE DETAILS)	KNOX			20		120	PR, SS++
US 34	421	INFIELDS/RAMPS	US 34	WEST MAIN STREET EXIT	KNOX			40		240	SS, EB EXIT RAMP HEAVY TSL
US 34	421	E & W BOUND	US 34	MM 0-8	KNOX	8		40		240	BS
US 34	421	WESTBOUND	US 34	MM 15	WARREN			1		6	SS
US 150	421	NORTHBOUND	US 150	FROM US 34 TO N. LAKE STOREY RD	KNOX	0.6		5		30	BS
US 150	421	NORTHBOUND	US 150	STA 354+00 TO 342+00 EAST AND WEST SIDE	KNOX		NORTH OF OAKLAWN CEMETERY	5		30	HEAVY ROSETTES
US 150	421	NORTHBOUND	US 150	500FT EAST & WEST OF KNOX HWY 37 (2100)	KNOX			5		30	HEAVY ROSETTES
US 150	421	NORTHBOUND	US 150	KNOX RD 2350 TO 500' SOUTH (WEST SIDE OF ROAD)	KNOX			1		6	BS
US 150	421	NORTHBOUND	US 150	STA 167+00 TO 170+00 (HENDERSON CREEK) EAST SIDE	KNOX			10		60	BS
US 150	421	NORTHBOUND	US 150	600' SOUTH OF KNOX RD 2900 TO KNOX COUNTY LINE	KNOX	1.2		20		120	SS HEAVY TSL NEAR POPE CREEK
I-74	421	EASTBOUND	I-74	MM 44-48	KNOX	4		10		60	
I-74	421	EASTBOUND	I-74	MM 48.5-50	KNOX	1.5		25		150	SS
I-74	421	EASTBOUND	I-74	EXIT 48 (NW & SW INFIELDS AND RAMPS)	KNOX			22		132	SS
I-74	421	INFIELDS/RAMPS	I-74	EXIT 71 EDGES	PEORIA			10		60	++
SUB-TOTAL										1764	

QUANTITIES	APPROX. OUNCES	GALLON*
SUB-TOTAL SHEET 7	2034	16
SUB-TOTAL SHEET 8	813	6
SUB-TOTAL SHEET 9	1386	11
SUB-TOTAL SHEET 10	2466	19
SUB-TOTAL SHEET 11	2166	17
SUB-TOTAL SHEET 12	2220	17
SUB-TOTAL SHEET 13	1764	14
TOTAL	12849	100
*128 OUNCE=1 GALLON		

LEGEND

-  SS = Spot Spraying
-  BS = Blanket Spraying
- BR = Brush
- SS* = May Require Hand Spray/Back Pack
- TSL = Teasel
- THSL = Thistle
- CV = Crown Vetch
- FL = Fence Line
- (++) = Engineer must be present during spray operations
- NS = No Spray
- Wet = Area is Seasonally Wet
- PR = Prairie - Consult with R.E.
- Edges = Spray mowed edge only & consult with R.E.
- Heavy = Heavy Infestation
- SRRA = Spoon River Rest Area
- STP = Steep Hillside
- (*) = For Information Only

MODEL: D:\p\h\...
 FILE NAME: G:\1\files\21081_IDOT_DIST_4 - PFB_201_023\Work_Order_04 - Eastern_D418_Transportation\Weed_Spraying\CAD_Sheets\Schedule_of_Quantities.dwg

HERBICIDE DOSAGE CHART

WATER	MILESTONE VM*	DRIFT CONTROL**	NON-IONIC SURFACTANT***	ACRES OF R.O.W.
(GALLONS)	(OZ.)	(OZ.)	(PINTS)	ACRE
40	6	3.2	0.8	1
50	7.5	4	1	1.25
100	15	8	2	2.5
200	30	16	4	5
300	45	24	6	7.5
400	60	32	8	10
500	75	40	10	12.5
600	90	48	12	15
700	105	56	14	17.5
800	120	64	16	20
900	135	72	18	22.5
1000	150	80	20	25
1100	165	88	22	27.5
1200	180	96	24	30
1300	195	104	26	32.5
1400	210	112	28	35
1500	225	120	30	37.5

* BASED ON 6 OUNCES OF MILESTONE VM FOR EACH 1.0 ACRE
 ** BASED ON 8 OUNCES OF DRIFT CONTROL AGENT PER 100 GALLONS
 *** BASED ON 2 PINTS OF NON-IONIC SURFACTANT FOR EACH 100 GALLONS OF WATER

- Notes:**
 1. Suggested rate of water per acre. Refer to product label for verification.
 2. Spraying machine shall be calibrated to deliver 6 oz of herbicide per acre 72 hr prior to job start.
 3. Spot checks will be performed to check for herbicide delivery accuracy.

MODEL: D:\p\h\...
 FILE NAME: 03_11\0311081.IDOT - DIST 4 - RTB 201023\Work Order 04 - Eastern D418 Transportation\Weed Spraying\CAD Sheets\Herbicide Dosage Chart.dwg

KLINGNER & ASSOCIATES, P.C.
 Engineers • Architects • Surveyors
 Galesburg, Illinois
 40 North Prairie Street
 Galesburg, IL 62541

USER NAME = mrich	DESIGNED - MCR	REVISED -
PLOT SCALE = 100,0000' / in.	DRAWN - MCR	REVISED -
PLOT DATE = 3/7/2022	CHECKED - MCL	REVISED -
	DATE - 2/15/2022	REVISED -

DESIGNED - MCR	REVISED -
DRAWN - MCR	REVISED -
CHECKED - MCL	REVISED -
DATE - 2/15/2022	REVISED -

**STATE OF ILLINOIS
 DEPARTMENT OF TRANSPORTATION**

HERBICIDE DOSAGE CHART

SCALE: SHEET 21 OF 21 SHEETS STA. TO STA.

F.A. RTE.	SECTION	COUNTY	TOTAL SHEETS	SHEET NO.
VAR.	D4 WEED SPRAYING 2022	VARIOUS	21	21
			CONTRACT NO. 68G89	
		ILLINOIS	FED. AID PROJECT	