

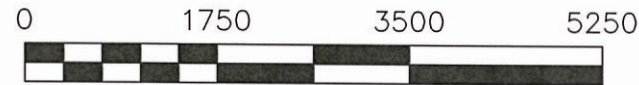
1. COVER SHEET
2. GENERAL NOTES, SUMMARY OF QUANTITIES, COMMITMENTS AND HIGHWAY STANDARDS
3. TYPICAL SECTIONS
4. PLAN AND SCHEDULE OF QUANTITIES

DESIGN CLASSIFICATION

ROAD CLASSIFICATION = MAJOR COLLECTOR
 2019 ADT = 1600 VPD
 DESIGN SPEED: 50 MPH
 POSTED SPEED: 55 MPH
 3R DESIGN STANDARDS

SCALES

PLAN 1" = 1750'



UTILITIES

CALL J.U.L.I.E. BEFORE YOU DIG
 800-892-0123

ELECTRIC:

AMEREN ILLINOIS
 BELLEVILLE, IL 62221
 (618) 236-4372

MONROE COUNTY ELECTRIC CO-OP
 WATERLOO, IL 62298
 (618) 939-7171

TELEPHONE:

HARRISONVILLE TELEPHONE COMPANY
 WATERLOO, IL 62298
 (618) 939-6112

FIBER OPTIC:

HARRISONVILLE TELEPHONE COMPANY
 WATERLOO, IL 62298
 (618) 939-6112

WATER:

FOUNTAIN WATER DISTRICT
 VALMEYER, IL 62295
 (618) 935-2121

GAS:

AMEREN ILLINOIS
 BELLEVILLE, IL 62221
 (618) 236-4372

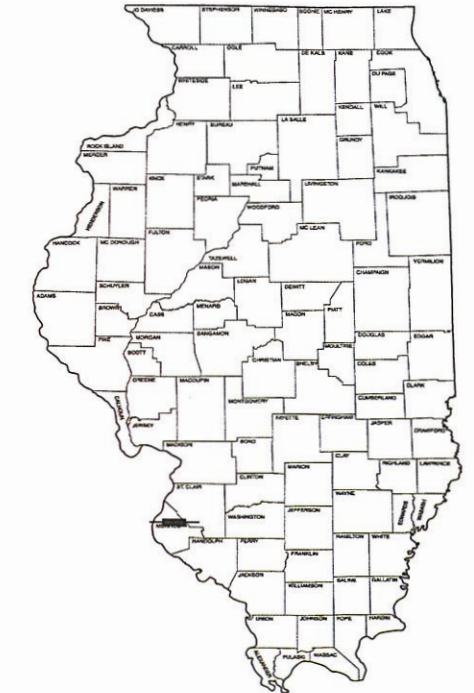
STATE OF ILLINOIS
 DEPARTMENT OF TRANSPORTATION
 PLANS FOR PROPOSED
 FEDERAL AID HIGHWAY

HSIP FUNDING

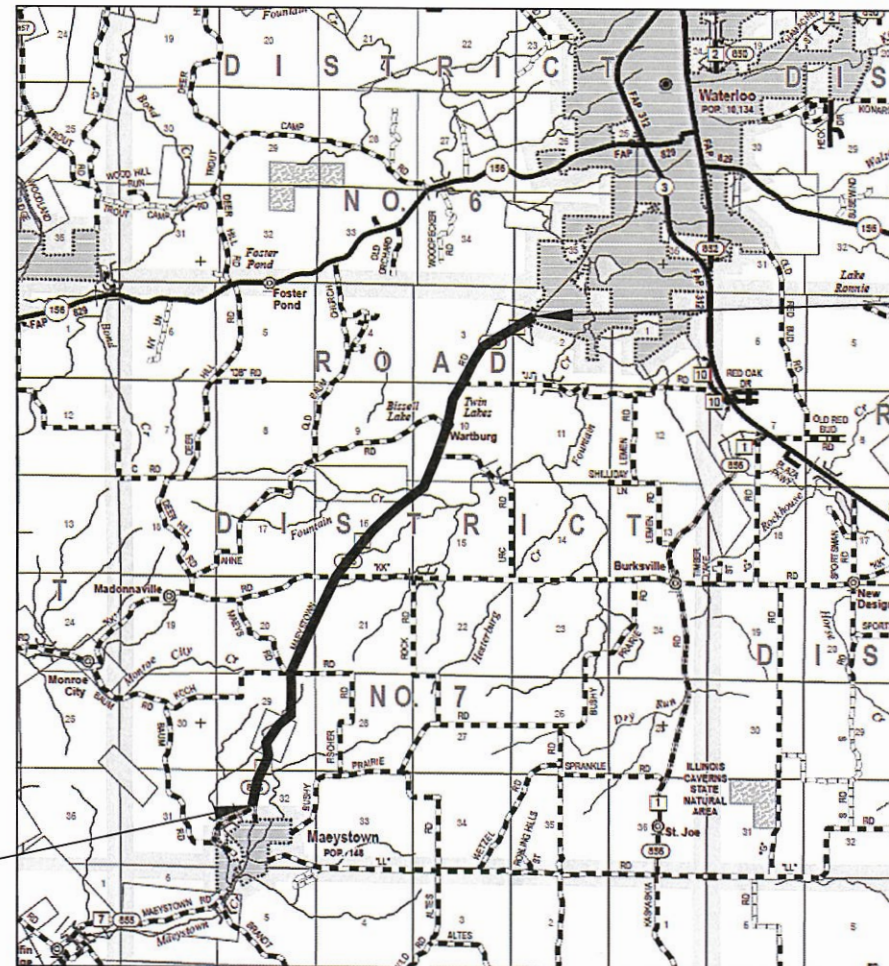
FAS 855 - MAEYSTOWN ROAD - C.H. 7
 MAEYSTOWN ROAD HOT-MIX ASPHALT SHOULDERS
 SECTION 21-00085-00-SP
 PROJECT NO. E36C(153)

COUNTY OF MONROE
 JOB NO. C-98-039-23

| F.A.S. RTE. | SECTION | COUNTY | TOTAL SHEETS | SHEET NO. |
|--------------|----------------|----------|--------------------|-----------|
| 855 C.H.7 | 21-00085-00-SP | MONROE | 4 | 1 |
| | | ILLINOIS | CONTRACT NO. 97776 | |



LOCATION OF SECTION INDICATED THUS:



BEGIN PROJECT
 STA. 209+25

END PROJECT
 STA. 526+00

LOCATION MAP

GROSS LENGTH = 31675.00 FEET = 6.00 MILES
 NET LENGTH = 31675.00 FEET = 6.00 MILES

DRAWN BY DAVID W. CARNAHAN DATE 03/01/2022
 CHECKED BY AARON W. METZGER DATE 03/03/2022

AARON W. METZGER
 062-055382
 REGISTERED PROFESSIONAL ENGINEER
 STATE OF ILLINOIS
 These plans were prepared by me or a full time member of my staff under my personal supervision.
 Date 3/16/22
 County Engineer
 Illinois Registered Professional Engineer No. 055382
 Expiration Date: 11/30/23

STATE OF ILLINOIS
 DEPARTMENT OF TRANSPORTATION

APPROVED March 16 20 22

 Monroe County Engineer
 Monroe County Highway Department

Passed March 18 20 22

 District 8 Engineer
 Local Roads and Streets

Released for Bid Based on Limited Review March 18 20 22

 Region 5 Engineer

PRINTED BY THE AUTHORITY
 OF THE STATE OF ILLINOIS

GENERAL NOTES

1. TRAFFIC CONTROL AND PROTECTION AND PROPER BARRICADES SHALL BE MAINTAINED BY THE CONTRACTOR.
2. THE CONTRACTOR WILL BE REQUIRED TO HAVE TWO FLAGGERS ON-SITE DURING ALL MAINLINE PAVING OPERATIONS.
3. THE CONTRACTOR IS RESPONSIBLE FOR CONTACTING THE MONROE COUNTY HIGHWAY DEPARTMENT AT LEAST 48 HOURS IN ADVANCE PRIOR TO COMMENCEMENT OF ANY CONSTRUCTION ACTIVITIES OR WORK REQUIRING INSPECTION OR APPROVAL.
4. USE ALL FLUORESCENT ORANGE 48" CONSTRUCTION SIGNS.
5. NO OVERNIGHT LANE CLOSURES WILL BE ALLOWED ON THIS PROJECT.
6. FACTORS USED FOR QUANTITY CALCULATIONS ARE AS FOLLOWS:
ALL HOT-MIX ASPHALT - 112.0 LBS/SQ YD PER 1" THICKNESS
7. THE THICKNESS OF THE BITUMINOUS MIXTURE SHOWN ON THE PLANS IS THE NOMINAL THICKNESS, DEVIATIONS FROM THE NOMINAL THICKNESS WILL BE PERMITTED, AS APPROVED BY THE ENGINEER, WHEN SUCH DEVIATIONS OCCUR DUE TO IRREGULARITIES IN THE EXISTING SURFACE OR BASE ON WHICH THE BITUMINOUS MIXTURE IS PLACED.
8. ACCESS SHALL BE PROVIDED TO/FROM PRIVATE ENTRANCES AT ALL LOCATIONS DURING ALL STAGES.
9. ALL EXCAVATION ADJACENT TO THE EDGE OF PAVEMENT SHALL BE PROTECTED BY TYPE 1 OR 2 BARRICADES
10. SEEDING IS NOT ANTICIPATED, ANY AREA DISTURBED OUTSIDE THE CONSTRUCTION LIMITS DURING CONSTRUCTION SHALL BE RESTORED TO ITS ORIGINAL CONDITION AT THE CONTRACTORS EXPENSE.
11. NO WORK WILL BE PERFORMED ON MAILBOX TURNOUTS BEYOND THE NEW 3 FOOT HMA SHOULDER.
12. HOT-MIX ASPHALT SHOULDERS SHALL BE 8" THICK ACROSS ENTRANCES AS DIRECTED BY THE ENGINEER.
13. IT IS NOT ANTICIPATED THAT EXISTING SIGNING WILL BE WITHIN THE CONSTRUCTION LIMITS, PRECAUTIONS SHOULD BE TAKEN TO PROTECT EXISTING SIGNING, ANY EXISTING SIGNING DAMAGED DURING CONSTRUCTION SHALL BE RESTORED TO ITS ORIGINAL CONDITION AT THE CONTRACTORS EXPENSE.

HIGHWAY STANDARDS

| | |
|------------------|--|
| STANDARD SYMBOLS | 000001-08 |
| HMA SHOULDER | 482001-02 |
| TRAFFIC CONTROL | 701201-05 701301-04 701306-04 701311-03 701326-04 701901-08 |
| RUMBLE STRIP | 642006-01 |

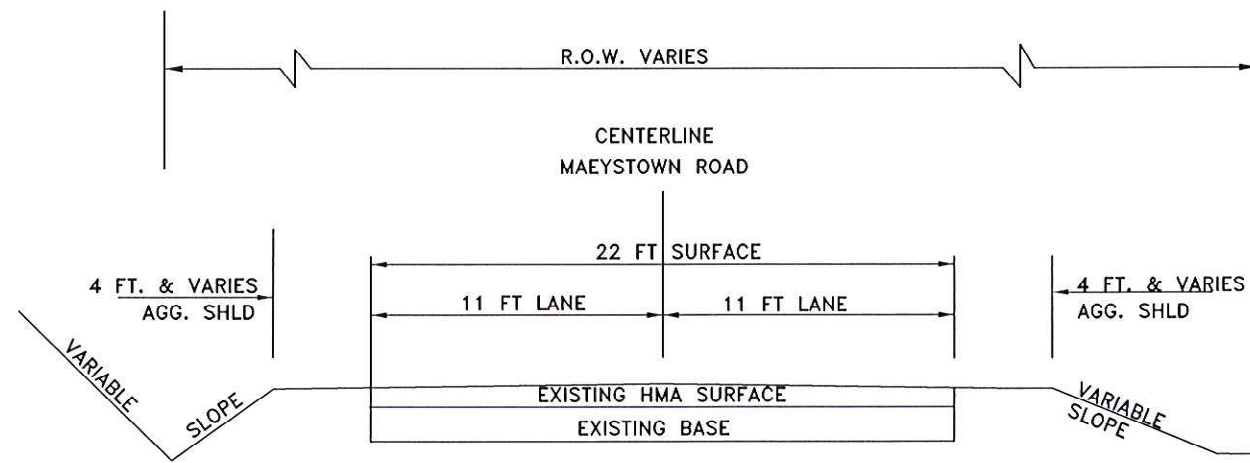
SALVAGE: NONE

COMMITMENTS: NONE

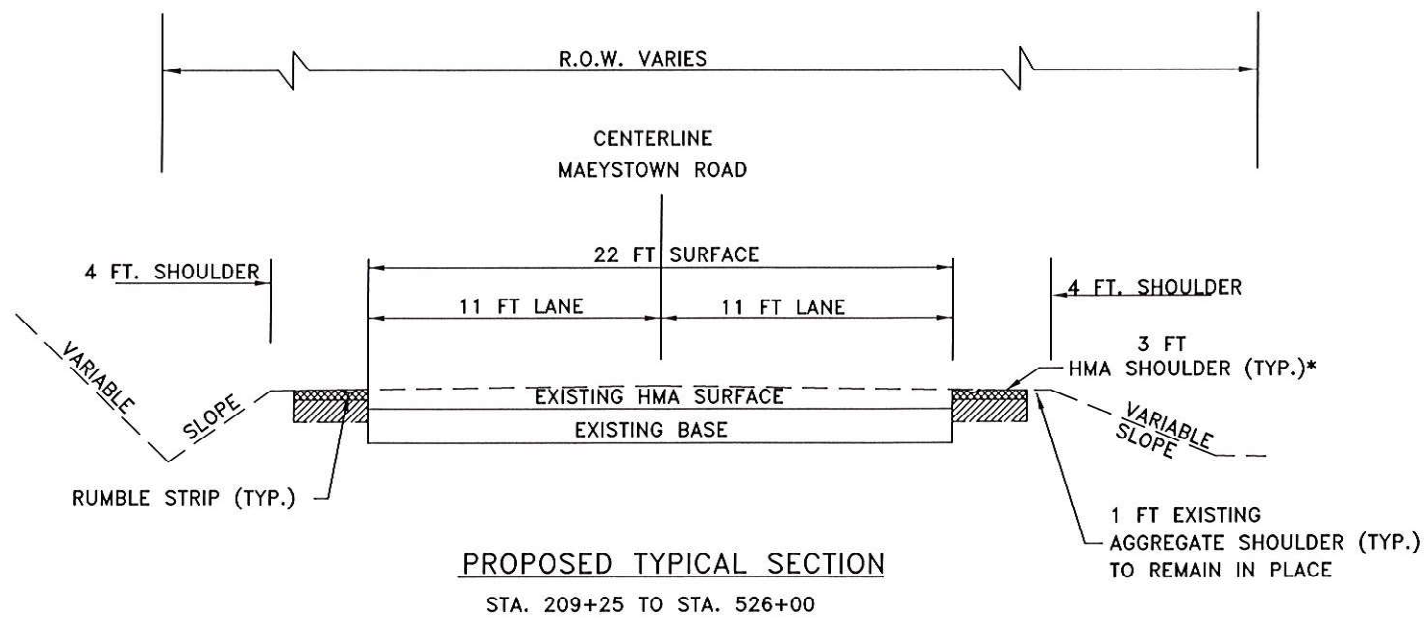
| SUMMARY OF QUANTITIES | | | |
|-----------------------|--|-------|----------|
| CODE | ITEM | UNIT | QUANTITY |
| 20200600 | EXCAVATING AND GRADING EXISTING SHOULDER | UNIT | 619 |
| 48203100 | HOT-MIX ASPHALT SHOULDERS | TON | 7060 |
| 64200108 | SHOULDER RUMBLE STRIP 8 INCH | FT | 58350 |
| 67100100 | MOBILIZATION | L SUM | 1 |
| X7010216 | TRAFFIC CONTROL AND PROTECTION (SPECIAL) | L SUM | 1 |

| HOT-MIX ASPHALT MIXTURE REQUIRMENTS | | |
|---|------------------------|------------------------|
| LOCATIONS | ALL | |
| MIXTURE USE | SHOULDER BASE | SHOULDER SURFACE |
| AC/PG | PG 64-22 | PG 64-22 |
| RAP % (MAX) | SEE SPECIAL PROVISIONS | SEE SPECIAL PROVISIONS |
| DESIGN AIR Voids | 4.0% @ Ndes= 30 | 4.0% @ Ndes=30 |
| MIXTURE COMPOSITION (GRADATION MIXTURE) | IL 19.0 L | IL 9.5 L |
| FRICITION AGGREGATE | MIXTURE C | MIXTURE C |
| MIXTURE WEIGHT | 112.0 LB/SQ YD/IN | 112.0 LB/SQ YD/IN |
| QUALITY MANAGEMENT PROGRAM | QC/QA | QC/QA |
| SUBLOT SIZE | N/A | N/A |
| MATERIAL TRANSFER DEVICE | NO | NO |

DRAWING FILE: S:\Monroetown Road - HMA COVER



EXISTING TYPICAL SECTION
STA. 209+25 TO STA. 526+00

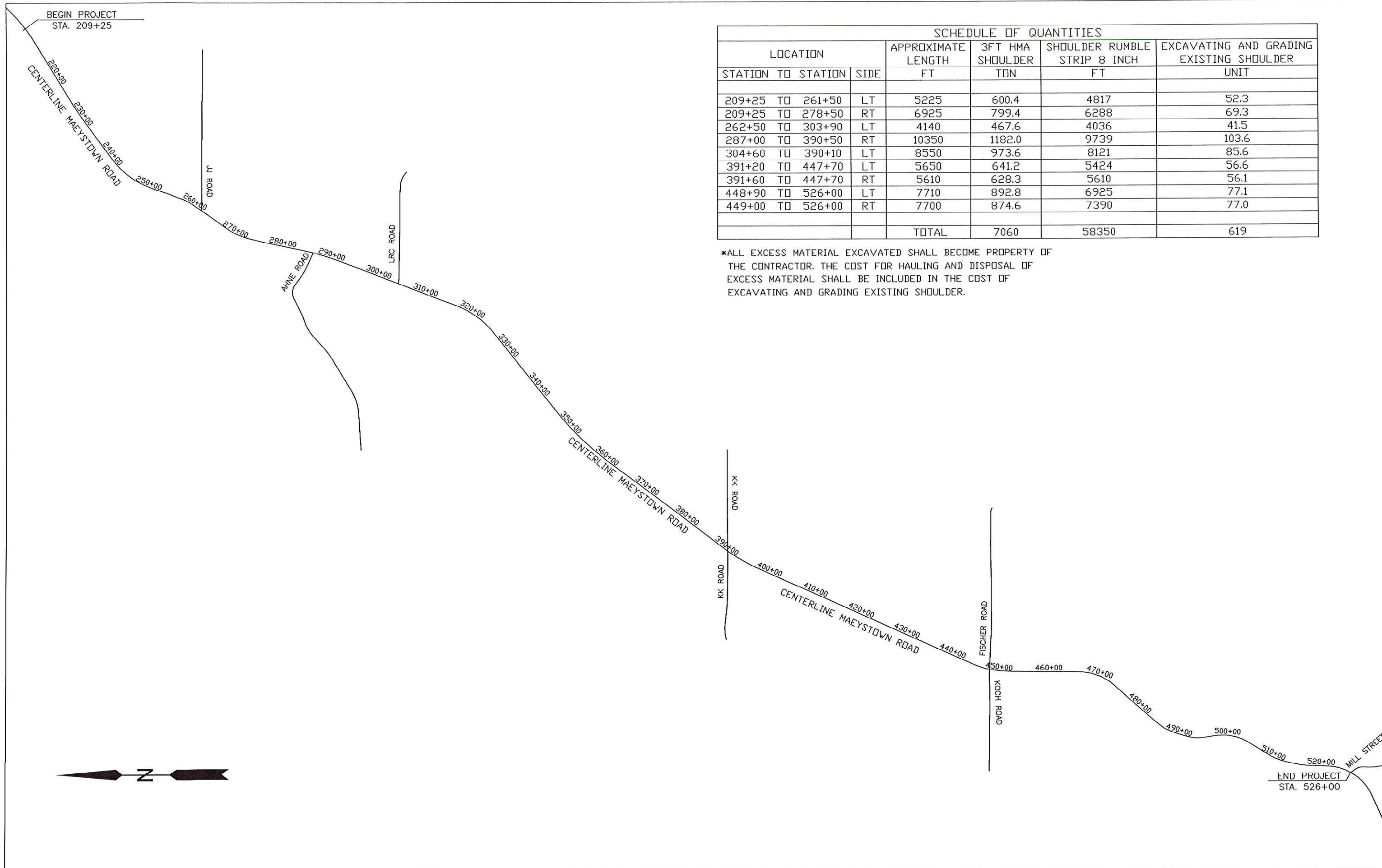


PROPOSED TYPICAL SECTION
STA. 209+25 TO STA. 526+00

* HMA SHOULDER (TYP.)
SHALL BE PLACED IN 2 LIFTS
SURFACE LIFT SHALL BE 2" THICK
BASE LIFT WILL BE 4-6" THICK BASED ON
LOCATION AS DIRECTED BY THE ENGINEER

DRAWING FILE: S:\Maeystown Road - HSIP\COVER

| | | | | | | | | | | | |
|-----------------------------|------------|-----------|-------------------------------------|------------------|--|--------------------------------|---------------------------|------------------|---------------------------|-------------------|--|
| USER NAME = | DESIGNED - | REVISED - | MONROE COUNTY HIGHWAY DEPARTMENT | TYPICAL SECTIONS | | F.A.S. RTE. 855 CH. 7 | SECTION 21-00085-00-SP | COUNTY MONROE | TOTAL SHEETS 4 | SHEET NO. 3 | |
| PLOT SCALE = 100,000' / in. | DRAWN - | REVISED - | | | | SCALE: NA | SHEET 1 OF 1 SHEETS | STA. TO STA. | ILLINOIS FED. AID PROJECT | | |
| PLOT DATE = | CHECKED - | REVISED - | | | | | | | | | |
| | DATE - | REVISED - | | | | | | | | | |



| SCHEDULE OF QUANTITIES | | | | | | | |
|------------------------|------|--------------------|------------------|------------------------------|--|--|-------|
| LOCATION | | APPROXIMATE LENGTH | 3FT HMA SHOULDER | SHOULDER RUMBLE STRIP 8 INCH | EXCAVATING AND GRADING EXISTING SHOULDER | | |
| STATION TO STATION | SIDE | FT | TON | FT | UNIT | | |
| 209+25 TO 261+50 | LT | 5225 | 600.4 | 4817 | | | 52.3 |
| 209+25 TO 278+50 | RT | 6925 | 799.4 | 6288 | | | 69.3 |
| 262+50 TO 303+90 | LT | 4140 | 467.6 | 4036 | | | 41.5 |
| 287+00 TO 390+50 | RT | 10350 | 1182.0 | 9739 | | | 103.6 |
| 304+60 TO 390+10 | LT | 8550 | 973.6 | 8121 | | | 85.6 |
| 391+20 TO 447+70 | LT | 5650 | 641.2 | 5424 | | | 56.6 |
| 391+60 TO 447+70 | RT | 5610 | 628.3 | 5610 | | | 56.1 |
| 448+90 TO 526+00 | LT | 7710 | 892.8 | 6925 | | | 77.1 |
| 449+00 TO 526+00 | RT | 7700 | 874.6 | 7390 | | | 77.0 |
| TOTAL | | | 7060 | 58350 | | | 619 |

*ALL EXCESS MATERIAL EXCAVATED SHALL BECOME PROPERTY OF THE CONTRACTOR. THE COST FOR HAULING AND DISPOSAL OF EXCESS MATERIAL SHALL BE INCLUDED IN THE COST OF EXCAVATING AND GRADING EXISTING SHOULDER.

| | | | | | | | | | | |
|--------------|------------|-----------|-------------------------------------|---------------------------------|----------------------------|------------------------|--------------------|---------------------------|-------------|--|
| USER NAME = | DESIGNED - | REVISED - | MONROE COUNTY HIGHWAY DEPARTMENT | PLAN AND SCHEDULE OF QUANTITIES | F.A.S. RT.E. 7 | SECTION 21-00085-00-SP | COUNTY MONROE | TOTAL SHEETS 4 | SHEET NO. 4 | |
| PLDT SCALE = | DRAWN - | REVISED - | | | SCALE: 1" = 1750' | SHEET 1 OF 1 SHEETS | CONTRACT NO. 97776 | ILLINOIS FED. AID PROJECT | | |
| PLDT DATE = | CHECKED - | REVISED - | | | STA. 209+25 TO STA. 526+00 | | | | | |
| | DATE - | REVISED - | | | | | | | | |