

STATE OF ILLINOIS
DEPARTMENT OF TRANSPORTATION

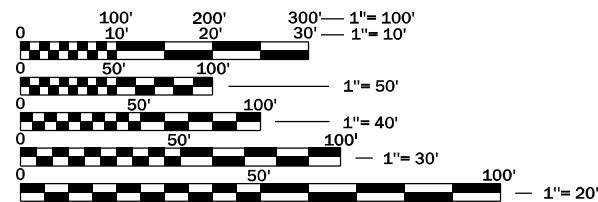
F.A. RTE.	SECTION	COUNTY	TOTAL SHEETS	SHEET NO.
VAR	D3 GRDRL DELIN MAINT INT 22-25	VARIOUS	17	1
		ILLINOIS	CONTRACT NO. 46589	

INDEX OF SHEETS

1. COVER SHEET
2. GENERAL NOTES
3. SUMMARY OF QUANTITIES
4. SCHEDULES - BURBANK COUNTY
5. SCHEDULES - LASALLE COUNTY
6. SCHEDULES - DEKALB COUNTY
7. SCHEDULES - LIVINGSTON COUNTY
8. SCHEDULES - GRUNDY COUNTY
9. SCHEDULES - KENDALL COUNTY
10. SCHEDULES - FORD COUNTY
11. SCHEDULES - IROQUOIS COUNTY
12. SCHEDULES - KANKAKEE COUNTY
13. DETAILS - CURB REFLECTORS
- 14 - 16. DETAILS - GUARDRAIL AND BARRIER WALL MOUNTING
17. DETAILS - MISCELLANEOUS MOUNTING

HIGHWAY STANDARDS

- | | |
|-----------|---|
| 000001-08 | STANDARD SYMBOLS, ABBREVIATIONS AND PATTERNS |
| 701001-02 | OFF-ROAD OPERATIONS 2L, 2W, MORE THAN 15' AWAY |
| 701006-05 | OFF-ROAD OPERATIONS 2L, 2W, 15' TO 24" FROM PAVEMENT EDGE |
| 701011-04 | OFF-ROAD MOVING OPERATIONS 2L, 2W, DAY ONLY |
| 701101-05 | OFF-ROAD OPERATIONS, MULTILANE, 15' TO 24" FROM PAVEMENT EDGE |
| 701106-02 | OFF-ROAD OPERATIONS, MULTILANE, MORE THAN 15' AWAY |
| 701201-05 | LANE CLOSURE, 2L, 2W, DAY ONLY, FOR SPEEDS ≥ 45 MPH |
| 701301-04 | LANE CLOSURE, 2L, 2W, SHORT TIME OPERATIONS |
| 701400-11 | APPROACH TO LANE CLOSURE, FREEWAY/EXPRESSWAY |
| 701406-13 | LANE CLOSURE, FREEWAY/EXPRESSWAY, DAY OPERATIONS ONLY |
| 701411-09 | LANE CLOSURE, MULTILANE, AT ENTRANCE OR EXIT RAMP FOR SPEEDS ≥ 45 MPH |
| 701426-09 | LANE CLOSURE, MULTILANE INTERMITTENT OR MOVING OPERATIONS FOR SPEEDS ≥ 45 MPH |
| 701427-05 | LANE CLOSURE, MULTILANE INTERMITTENT OR MOVING OPERATION FOR SPEEDS ≤ 40 MPH |
| 701428-01 | TRAFFIC CONTROL, SETUP AND REMOVAL, FREEWAY/EXPRESSWAY |
| 701456-05 | PARTIAL EXIT RAMP CLOSURE FREEWAY/EXPRESSWAY |
| 701601-09 | URBAN LANE CLOSURE, MULTILANE, 1W OR 2W WITH NONTRAVERSABLE MEDIAN |
| 701901-08 | TRAFFIC CONTROL DEVICES |



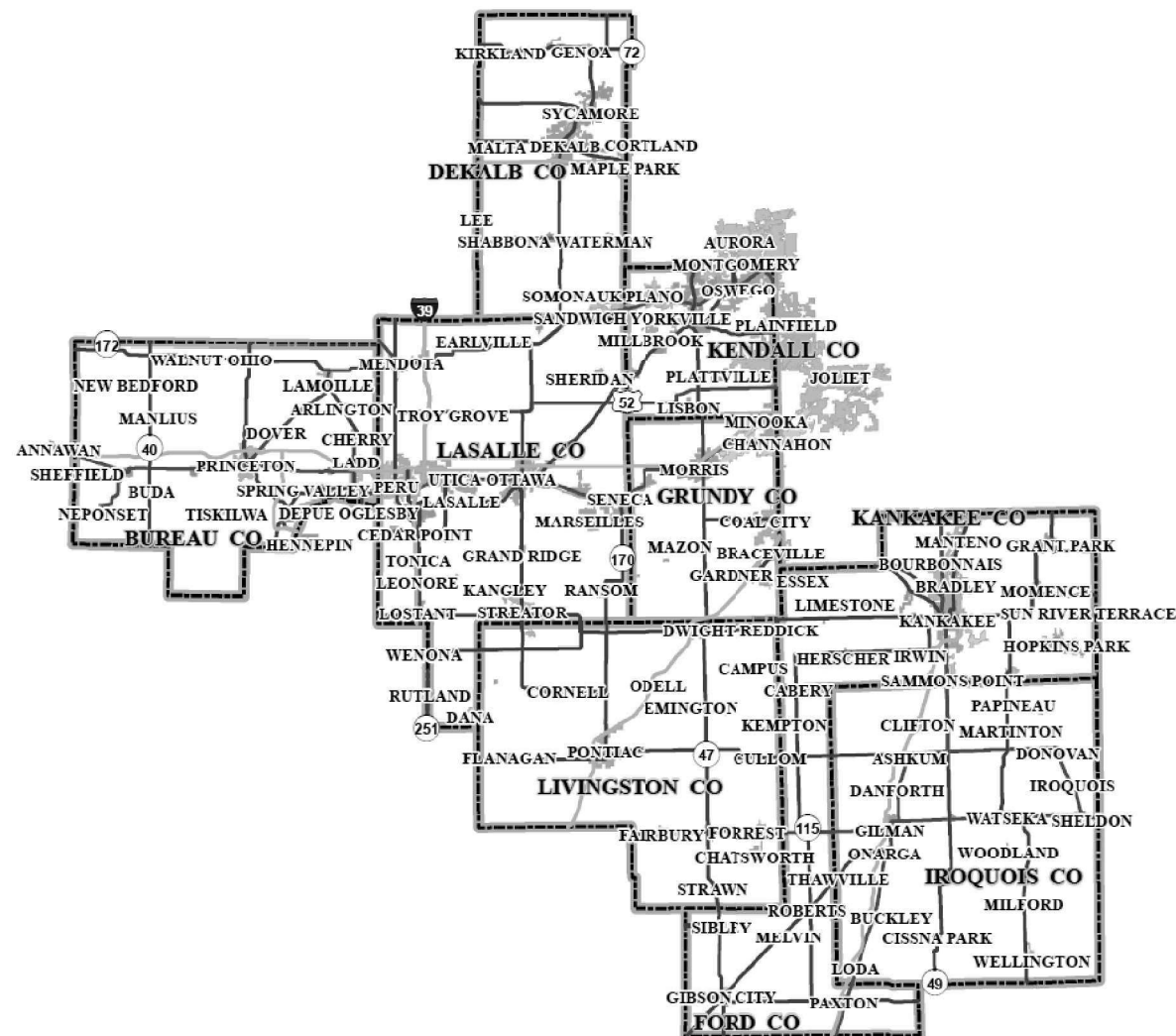
FULL SIZE PLANS HAVE BEEN PREPARED USING STANDARD ENGINEERING SCALES. REDUCED SIZED PLANS WILL NOT CONFORM TO STANDARD SCALES. IN MAKING MEASUREMENTS ON REDUCED PLANS, THE ABOVE SCALES MAY BE USED.

J.U.L.I.E.
JOINT UTILITY LOCATION INFORMATION FOR EXCAVATION
1-800-892-0123
OR 811

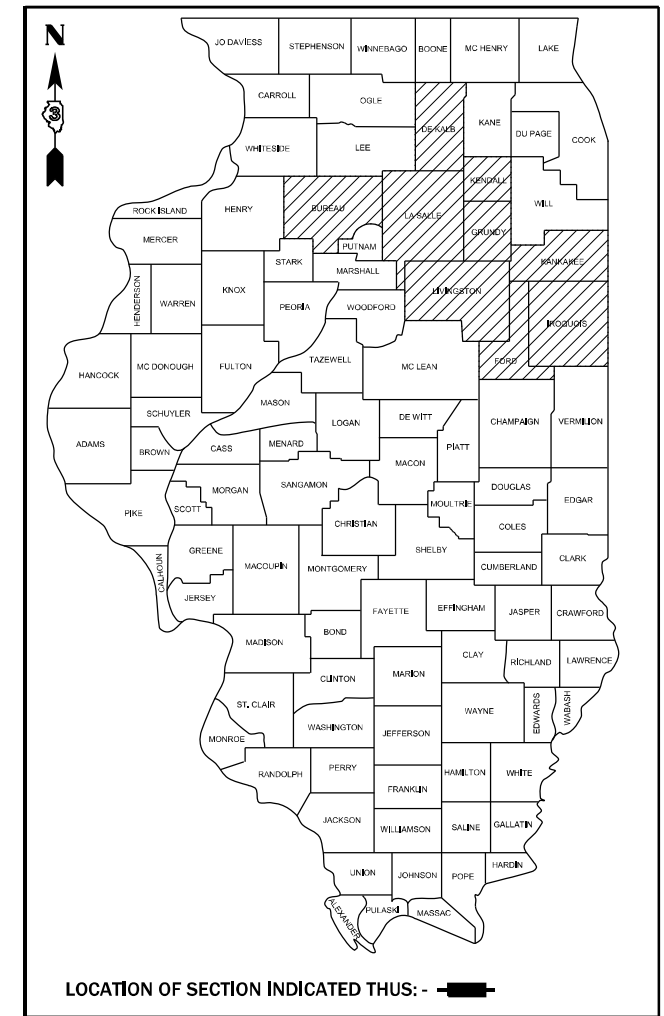
PROJECT ENGINEER: YOGESH PATEL
UNIT CHIEF: RON WOODSHANK
DISTRICT 3 NO. (815) 434-6131
CONTRACT NO. 46589

**PROPOSED
HIGHWAY PLANS**
VARIOUS ROUTES
SECTION D3 GRDRL DELIN MAINT INT 22-25
GUARDRAIL AND BARRIER WALL DELINEATION
VARIOUS COUNTIES

M-60-029-22



D-3 D-93-052-22



STATE OF ILLINOIS
DEPARTMENT OF TRANSPORTATION

SUBMITTED March 21, 2022
[Signature] REGIONAL ENGINEER

May 13, 2022 *[Signature]*
ENGINEER OF DESIGN AND ENVIRONMENT

May 13, 2022 *[Signature]*
DIRECTOR OF HIGHWAYS PROJECT IMPLEMENTATION

**PRINTED BY THE AUTHORITY
OF THE STATE OF ILLINOIS**

GENERAL NOTES

PLAN DIMENSIONS AND DETAILS RELATIVE TO EXISTING PLANS ARE SUBJECT TO NOMINAL CONSTRUCTION VARIATIONS. THE CONTRACTOR SHALL FIELD VERIFY EXISTING DIMENSIONS AND DETAILS AFFECTING NEW CONSTRUCTION AND MAKE NECESSARY APPROVED ADJUSTMENTS PRIOR TO CONSTRUCTION OR ORDERING OF MATERIALS. SUCH VARIATIONS SHALL NOT BE CAUSE FOR ADDITIONAL COMPENSATION FOR A CHANGE IN SCOPE OF THE WORK; HOWEVER, THE CONTRACTOR WILL BE PAID FOR THE QUANTITY ACTUALLY FURNISHED AT THE UNIT PRICE BID FOR THE WORK.

COMMITMENTS

STATE OF ILLINOIS
DEPARTMENT OF TRANSPORTATION
DISTRICT THREE
AS BUILT INFORMATION

SUPERVISING CONSTRUCTION FIELD ENGINEER

RESIDENT ENGINEER / TECHNICIAN

START & END DATES
OF CONSTRUCTION:

INSPECTORS:

STATE OF ILLINOIS
DEPARTMENT OF TRANSPORTATION
DISTRICT THREE

PREPARED BY: _____
DISTRICT STUDIES & PLANS ENGINEER

DATE: _____

EXAMINED BY: _____
DISTRICT CONSTRUCTION ENGINEER

DISTRICT MATERIALS ENGINEER

DISTRICT OPERATIONS ENGINEER

**STATE OF ILLINOIS
DEPARTMENT OF TRANSPORTATION**

GENERAL NOTES

SCALE: SHEET 1 OF 1 SHEETS STA. TO STA.

F.A. RTE.	SECTION	COUNTY	TOTAL SHEETS	SHEET NO.
VAR	D3 GRDRL DELIN MAINT INT 22-25	VARIOUS	17	2
ILLINOIS FED. AID PROJECT			CONTRACT NO. 46589	

CODE NO.	ITEM	UNIT	TOTAL QUANTITY	CONSTRUCTION CODE	
				100% STATE	
				SAFETY 0021	SAFETY 0021
				URBAN	RURAL
67100100	MOBILIZATION	L SUM	1	0.5	0.5
78200005	GUARDRAIL REFLECTORS, TYPE A	EACH	11648	1261	10387
78200020	CURB REFLECTORS	EACH	11561	7626	3935
X0326649	LINEAR DELINEATOR PANELS, 6 INCH	EACH	286	155	131
X0327809	LINEAR DELINEATOR PANELS, 4 INCH	EACH	8993	795	8198

MODEL: Default
 FILE NAME: p:\u1d2c-pw-bentley.com\PIV\DOT\Documents\DOT Office\Dir\dir: 3\Project\ID346589\CADD\DATA\ID346589 - PLANS.dgn

USER NAME = woodshank	DESIGNED - RW	REVISED -	STATE OF ILLINOIS DEPARTMENT OF TRANSPORTATION	SUMMARY OF QUANTITIES			F.A. RTE.	SECTION	COUNTY	TOTAL SHEETS	SHEET NO.
DRAWN - RW	REVISIED -	VAR					D3 GRDRL DELIN MAINT INT 22-25	VARIOUS	17	3	
PLOT SCALE = 100,0000' / in.	CHECKED - YP	REVISIED -		SCALE: SHEET 1 OF 1 SHEETS STA. TO STA.			CONTRACT NO. 46589				
PLOT DATE = 2/7/2022	DATE - 2/4/2022	REVISIED -					ILLINOIS FED. AID PROJECT				

DELINEATION SCHEDULE - BUREAU COUNTY

LOCATION		GUARDRAIL REFLECTORS TYPE A						LINEAR DELINEATOR PANELS 4 INCH				LINEAR DELINEATOR PANELS 6 INCH				CURB REFLECTORS												
		EACH						EACH				EACH				EACH												
		URBAN			RURAL			URBAN		RURAL		URBAN		RURAL		URBAN		RURAL										
		1 WAY CRYSTAL	2 WAY CRYSTAL	1 WAY AMBER	1 WAY CRYSTAL	2 WAY CRYSTAL	1 WAY AMBER	CRYSTAL	AMBER	CRYSTAL	AMBER	CRYSTAL	AMBER	CRYSTAL	AMBER	CRYSTAL	AMBER	CRYSTAL	AMBER									
US ROUTE 6	HENRY COUNTY LINE TO LASALLE COUNTY LINE												23			277		15		203					46	182		
IL ROUTE 26	INTERSTATE 180 (I-180) TO LEE COUNTY LINE														194	6			153	4						57	156	
IL ROUTE 29	ILLINOIS RIVER TO IL ROUTE 89												29			492		24		417				18		27	103	
US ROUTE 34	HENRY COUNTY LINE TO LASALLE COUNTY LINE												14			87		12		68				44		22		
IL ROUTE 40	STARK COUNTY LINE TO WHITESIDE COUNTY LINE															178				112						112		
INTERSTATE ROUTE 80	HENRY COUNTY LINE TO LASALLE COUNTY LINE											10			244			7		203		20	20					
IL ROUTE 89	PUTNAM COUNTY LINE TO US ROUTE 34												67			58		59		36								
IL ROUTE 92	HENRY COUNTY LINE TO US ROUTE 34															183				122								
INTERSTATE ROUTE 180	INTERSTATE 80 (I-80) TO IL ROUTE 71														156		38			129	26	10	10					
DEPUE SPUR	US ROUTE 6 TO IL ROUTE 29															35				25								
TISKILWA SPUR	PRINCETON TO TISKILWA															49				35								
SUBTOTALS		10	133		400	1553	44	117		1503	30	30	30		62		264	441										
TOTAL		143			1997			117		1533		60		0		62		705										

CURB REFLECTOR: MIN 3 PER SIDE, 40 FT C-C, 3 REFL ON APPROACH ENDS, 20 FT C-C ON TAPERS.
 GUARDRAIL REFLECTOR: MINIMUM 4 REFLECTORS, 80 FT C-C.
 LINEAR DELINEATOR PANELS 4": SPACED BETWEEN GUARDRAIL REFLECTORS NEW INSTALL AND REPAIR EXISTING AS NEEDED.
 LINEAR DELINEATOR PANELS 6": 80 FT C-C. MINIMUM 2 PANELS FOR NEW INSTALL AND REPAIR EXISTING AS NEEDED.

NOTE: REFLECTOR & PANEL COLOR TO MATCH ADJACENT PAVEMENT STRIPE

MODEL: Default
 FILE NAME: p:\bullet-new-bureau\com\p\w\DOT\Documents\DOT\Office\District_3\Project\0346589\CADD\data\0346589 - PLANS.dgn

USER NAME = woodshank	DESIGNED - RW	REVISED -
	DRAWN - RW	REVISED -
PLOT SCALE = 100,0000' / in.	CHECKED - YP	REVISED -
PLOT DATE = 2/4/2022	DATE - 2/4/2022	REVISED -

**STATE OF ILLINOIS
DEPARTMENT OF TRANSPORTATION**

**SCHEDULES
BUREAU COUNTY**

SCALE: SHEET 1 OF 1 SHEETS STA. TO STA.

F.A. RTE.	SECTION	COUNTY	TOTAL SHEETS	SHEET NO.
VAR	D3 GRDRL DELIN MAINT INT 22-25	VARIOUS	17	4
			CONTRACT NO. 46589	
		ILLINOIS FED. AID PROJECT		

DELINEATION SCHEDULE - LASALLE COUNTY

LOCATION		GUARDRAIL REFLECTORS TYPE A						LINEAR DELINEATOR PANELS 4 INCH				LINEAR DELINEATOR PANELS 6 INCH				CURB REFLECTORS								
		EACH						EACH				EACH				EACH								
		URBAN			RURAL			URBAN		RURAL		URBAN		RURAL		URBAN		RURAL						
		1 WAY CRYSTAL	2 WAY CRYSTAL	1 WAY AMBER	1 WAY CRYSTAL	2 WAY CRYSTAL	1 WAY AMBER	CRYSTAL	AMBER	CRYSTAL	AMBER	CRYSTAL	AMBER	CRYSTAL	AMBER	CRYSTAL	AMBER	CRYSTAL	AMBER					
US ROUTE 6	BUREAU COUNTY LINE TO GRUNDY COUNTY LINE						20	11			180		23		141				28	718				
IL ROUTE 17	LIVINGSTON COUNTY LINE TO WENONA										12				10				10					
IL ROUTE 18	JCT, IL ROUTE 17 TO IL ROUTE 89 (PUTNAM COUNTY)										57				39				59	180				
IL ROUTE 23	LIVINGSTON COUNTY LINE TO DEKALB COUNTY LINE						6				71		2		40					337	68	530		
US ROUTE 34	BUREAU COUNTY LINE TO DEKALB COUNTY LINE							12			84		6		55						107			
INTERSTATE ROUTE 39	WOODFORD COUNTY LINE TO LEE COUNTY LINE						17		34	19		7	15	29	17	5	32	2						
US ROUTE 52	IL ROUTE 251 TO KENDALL COUNTY LINE										115				83						72	286		
IL ROUTE 71	PUTNAM COUNTY LINE TO KENDALL COUNTY LINE							6			506		5		414				68	304		10		
INTERSTATE ROUTE 80	BUREAU COUNTY LINE TO GRUNDY COUNTY LINE						105		8	135		5	93	6	119	4	10	4	23	14				
IL ROUTE 170	LIVINGSTON COUNTY LINE TO US ROUTE 6							19			79		15		63									
IL ROUTE 178	LOWELL TO INTERSTATE 80 (I-80)							8			172		6		145						78	112		
IL ROUTE 251	IL ROUTE 18 TO MENDOTA										210										50	324	79	284
IL ROUTE 351	IL ROUTE JCT. 71 (JONESVILLE) TO US ROUTE 6 (LASALLE)							10			50		6		41						16	50		
SUBTOTALS		148	66	42	154	1536	12	171	35	1167	9	42	6	23	14	309	2025	326	1110					
TOTAL		256			1702			206		1176		48		37		2334		1436						

CURB REFLECTOR: MIN 3 PER SIDE, 40 FT C-C, 3 REFL ON APPROACH ENDS, 20 Ft C-C ON TAPERS.
 GUARDRAIL REFLECTOR: MINIMUM 4 REFLECTORS, 80 FT C-C.
 LINEAR DELINEATOR PANELS 4": SPACED BETWEEN GUARDRAIL REFLECTORS FOR NEW INSTALL AND REPAIR EXISTING AS NEEDED.
 LINEAR DELINEATOR PANELS 6": REPAIR EXISTING AS NEEDED.

NOTE: REFLECTOR & PANEL COLOR TO MATCH ADJACENT PAVEMENT STRIPE

MODEL: Default
 FILE NAME: p:\projects\new\bea\p\p\DOT\Documents\DOT\Office\Dir\dot\3\Project\3146589\CADD\DATA\3146589 - PLANS.dgn

USER NAME = woodshank	DESIGNED - RW	REVISED -
	DRAWN - RW	REVISED -
PLOT SCALE = 100,0000' / in.	CHECKED - YP	REVISED -
PLOT DATE = 2/4/2022	DATE - 2/4/2022	REVISED -

**STATE OF ILLINOIS
DEPARTMENT OF TRANSPORTATION**

SCHEDULES LASALLE COUNTY		F.A. RTE.	SECTION	COUNTY	TOTAL SHEETS	SHEET NO.
		VAR	D3 GRDRL DELIN MAINT INT 22-25	VARIOUS	17	5
SCALE:	SHEET 1 OF 1 SHEETS	STA.	TO STA.	ILLINOIS FED. AID PROJECT		

F.A. RTE.	SECTION	COUNTY	TOTAL SHEETS	SHEET NO.
VAR	D3 GRDRL DELIN MAINT INT 22-25	VARIOUS	17	5
CONTRACT NO. 46589				

DELINEATION SCHEDULE - DEKALB COUNTY

LOCATION		GUARDRAIL REFLECTORS TYPE A						LINEAR DELINEATOR PANELS 4 INCH				LINEAR DELINEATOR PANELS 6 INCH				CURB REFLECTORS																
		EACH						EACH				EACH				EACH																
		URBAN			RURAL			URBAN		RURAL		URBAN		RURAL		URBAN		RURAL														
		1 WAY CRYSTAL	2 WAY CRYSTAL	1 WAY AMBER	1 WAY CRYSTAL	2 WAY CRYSTAL	1 WAY AMBER	CRYSTAL	AMBER	CRYSTAL	AMBER	CRYSTAL	AMBER	CRYSTAL	AMBER	CRYSTAL	AMBER	CRYSTAL	AMBER													
IL ROUTE 23	LASALLE COUNTY LINE TO MCHENRY COUNTY LINE																9			114		5		84				2		137		22
US ROUTE 30	LEE COUNTY LINE TO KANE COUNTY LINE																			90				75				2		36		
IL ROUTE 38	OGLE COUNTY LINE TO KANE COUNTY LINE																			39				29				2		45		
IL ROUTE 64	OGLE COUNTY LINE TO KANE COUNTY LINE																8			200		4		149								
IL ROUTE 72	OGLE COUNTY LINE TO KANE COUNTY LINE																17			232		13		194				2				
SUBTOTALS			34			675		22		531				8		218		22														
TOTAL			34			675		22		531				8		218		22														

CURB REFLECTOR: MIN 3 PER SIDE, 40 FT C-C, 3 REFL ON APPROACH ENDS, 20 Ft C-C ON TAPERS.
 GUARDRAIL REFLECTOR: MINIMUM 4 REFLECTORS, 80 FT C-C.
 LINEAR DELINEATOR PANELS 4": SPACED BETWEEN GUARDRAIL REFLECTORS FOR NEW INSTALL AND REPAIR EXISTING AS N
 LINEAR DELINEATOR PANELS 6": REPAIR EXISTING AS NEEDED.

NOTE: REFLECTOR & PANEL COLOR TO MATCH ADJACENT PAVEMENT STRIPE

MODEL: Default
 FILE NAME: p:\u005cproject\paw_bentley.com\FW\DOT\Documents\DOT Office\Dir\rdt_3\Project\0346589\CADD\data\0346589 - PLANS.dgn

USER NAME = woodshank	DESIGNED - RW	REVISED -
	DRAWN - RW	REVISED -
PLOT SCALE = 100,0000' / in.	CHECKED - YP	REVISED -
PLOT DATE = 2/4/2022	DATE - 2/4/2022	REVISED -

**STATE OF ILLINOIS
DEPARTMENT OF TRANSPORTATION**

**SCHEDULES
DEKALB COUNTY**

SCALE: SHEET 1 OF 1 SHEETS STA. TO STA.

F.A. RTE.	SECTION	COUNTY	TOTAL SHEETS	SHEET NO.
VAR	D3 GRDRL DELIN MAINT INT 22-25	VARIOUS	17	6
			CONTRACT NO. 46589	
		ILLINOIS FED. AID PROJECT		

DELINEATION SCHEDULE - LIVINGSTON COUNTY

LOCATION		GUARDRAIL REFLECTORS TYPE A						LINEAR DELINEATOR PANELS 4 INCH				LINEAR DELINEATOR PANELS 6 INCH				CURB REFLECTORS												
		EACH						EACH				EACH				EACH												
		URBAN			RURAL			URBAN		RURAL		URBAN		RURAL		URBAN		RURAL										
		1 WAY CRYSTAL	2 WAY CRYSTAL	1 WAY AMBER	1 WAY CRYSTAL	2 WAY CRYSTAL	1 WAY AMBER	CRYSTAL	AMBER	CRYSTAL	AMBER	CRYSTAL	AMBER	CRYSTAL	AMBER	CRYSTAL	AMBER	CRYSTAL	AMBER									
IL ROUTE 17	KANKAKEE COUNTY LINE TO LASALLE COUNTY LINE												6			209		2		153				36	184	48		
IL ROUTE 23	PONTIAC (IL ROUTE OR OLD ROUTE 66) TO LASALLE COUNTY LINE														149					117						54	55	133
IL ROUTE 47	FORD COUNTY LINE TO GRUNDY COUNTY LINE														156					127					42		54	
INTERSTATE 55 NB	MCLEAN COUNTY LINE TO GRUNDY COUNTY LINE													112		28			102	22								
INTERSTATE 55 SB	GRUNDY COUNTY LINE TO MCLEAN COUNTY LINE													95		23			86	17								
OLD ROUTE 66	MCLEAN COUNTY LINE TO GRUNDY COUNTY LINE													12	91	20			78	14			10		28	286		
IL ROUTE 116	MARSHALL COUNTY LINE TO FORD COUNTY LINE												19			252		6		139							228	402
IL ROUTE 170	JCT. IL ROUTE 23 TO LASALLE COUNTY LINE														69				51							25		
LONG POINT RD.	IL ROUTE 23 TO LONG POINT														34				25									
SUBTOTALS			25		219	960	71	8		878	53			10		106	524	410	535									
TOTAL			25		1250		71	8		931		0		10		630		945										

CURB REFLECTOR: MIN 3 PER SIDE, 40 FT C-C, 3 REFL ON APPROACH ENDS, 20 FT C-C ON TAPERS.
 GUARDRAIL REFLECTOR: MINIMUM 4 REFLECTORS, 80 FT C-C.
 LINEAR DELINEATOR PANELS 4": SPACED BETWEEN GUARDRAIL REFLECTORS FOR NEW INSTALL AND REPAIR EXISTING AS NEEDED.
 LINEAR DELINEATOR PANELS 6": REPAIR EXISTING AS NEEDED.

NOTE: REFLECTOR & PANEL COLOR TO MATCH ADJACENT PAVEMENT STRIPE

MODEL: Default
 FILE NAME: p:\ultra-cw-bea\p\p\DOT\Documents\DOT Office\Dir\rdt_3\Project\10346589\CADD\data\10346589 - PLANS.dgn

USER NAME = woodshank	DESIGNED - RW	REVISED -
	DRAWN - RW	REVISED -
PLOT SCALE = 100,0000' / in.	CHECKED - YP	REVISED -
PLOT DATE = 2/4/2022	DATE - 2/4/2022	REVISED -

**STATE OF ILLINOIS
DEPARTMENT OF TRANSPORTATION**

**SCHEDULES
LIVINGSTON COUNTY**

SCALE: SHEET 1 OF 1 SHEETS STA. TO STA.

F.A. RTE.	SECTION	COUNTY	TOTAL SHEETS	SHEET NO.
VAR	D3 GRDRL DELIN MAINT INT 22-25	VARIOUS	17	7
			CONTRACT NO. 46589	
		ILLINOIS FED. AID PROJECT		

DELINEATION SCHEDULE - GRUNDY COUNTY

LOCATION		GUARDRAIL REFLECTORS TYPE A						LINEAR DELINEATOR PANELS 4 INCH				LINEAR DELINEATOR PANELS 6 INCH				CURB REFLECTORS			
		EACH						EACH				EACH				EACH			
		URBAN			RURAL			URBAN		RURAL		URBAN		RURAL		URBAN		RURAL	
		1 WAY CRYSTAL	2 WAY CRYSTAL	1 WAY AMBER	1 WAY CRYSTAL	2 WAY CRYSTAL	1 WAY AMBER	CRYSTAL	AMBER	CRYSTAL	AMBER	CRYSTAL	AMBER	CRYSTAL	AMBER	CRYSTAL	AMBER	CRYSTAL	AMBER
US ROUTE 6	LASALLE COUNTY LINE TO WILL COUNTY LINE																		
IL ROUTE 47	LIVINGSTON COUNTY LINE TO KENDALL COUNTY LINE																		
IL ROUTE 53	INTERSTATE 55 (I-55) TO WILL COUNTY LINE																		
INTERSTATE 55	LIVINGSTON COUNTY LINE TO WILL COUNTY LINE																		
INTERSTATE 80	LASALLE COUNTY LINE TO WILL COUNTY LINE																		
IL ROUTE 113	IL ROUTE 47 TO WILL COUNTY LINE																		
OLD ROUTE 66	IL ROUTE 47 TO IL ROUTE 53																		
OLD OLD ROUTE 66	IL ROUTE 47 TO OLD ROUTE 66																		
SUBTOTALS		190		5	208	277	82	170	4	380	59	14	6	14	8		712	56	224
TOTAL		195			567			174		439		20		22		712		280	

CURB REFLECTOR: MIN 3 PER SIDE, 40 FT C-C, 3 REFL ON APPROACH ENDS, 20 FT C-C ON TAPERS.

GUARDRAIL REFLECTOR: MINIMUM 4 REFLECTORS, 80 FT C-C.

LINEAR DELINEATOR PANELS 4": SPACED BETWEEN GUARDRAIL REFLECTORS FOR NEW INSTALL AND REPLACE EXISTING AS NEEDED.

LINEAR DELINEATOR PANELS 6": REPAIR QUANTITY - SPACED 80 FT. C-C, MINIMUM 2 PER STRUCTURE FOR NEW INSTALL AND REPLACE EXISTING AS NEEDED.

NOTE: REFLECTOR & PANEL COLOR TO MATCH ADJACENT PAVEMENT STRIPE

MODEL: Default
 FILE NAME: p:\project-new\beefy.com\FW\DOT\Documents\DOT Office\Dir\dir: 3\Project\0346589\CADD\DATA\0346589 - PLANS.dgn

USER NAME = woodshank	DESIGNED - RW	REVISED -
	DRAWN - RW	REVISED -
PLOT SCALE = 100,0000 ' / in.	CHECKED - YP	REVISED -
PLOT DATE = 2/4/2022	DATE - 2/4/2022	REVISED -

**STATE OF ILLINOIS
DEPARTMENT OF TRANSPORTATION**

**SCHEDULES
GRUNDY COUNTY**

SCALE: SHEET 1 OF 1 SHEETS STA. TO STA.

F.A. RTE.	SECTION	COUNTY	TOTAL SHEETS	SHEET NO.
VAR	D3 GRDRL DELIN MAINT INT 22-25	VARIOUS	17	8
			CONTRACT NO. 46589	
		ILLINOIS FED. AID PROJECT		

DELINEATION SCHEDULE - KENDALL COUNTY

LOCATION		GUARDRAIL REFLECTORS TYPE A						LINEAR DELINEATOR PANELS 4 INCH				LINEAR DELINEATOR PANELS 6 INCH				CURB REFLECTORS															
		EACH						EACH				EACH				EACH															
		URBAN			RURAL			URBAN		RURAL		URBAN		RURAL		URBAN		RURAL													
		1 WAY CRYSTAL	2 WAY CRYSTAL	1 WAY AMBER	1 WAY CRYSTAL	2 WAY CRYSTAL	1 WAY AMBER	CRYSTAL	AMBER	CRYSTAL	AMBER	CRYSTAL	AMBER	CRYSTAL	AMBER	CRYSTAL	AMBER	CRYSTAL	AMBER												
IL ROUTE 25	US ROUTE 34 TO KANE COUNTY LINE															123						106				1					
IL ROUTE 31	US ROUTE 34 TO 4 LANE SECTION															6						4									
US ROUTE 34	DEKALB COUNTY LINE TO US ROUTE 30															58						38				2				1158	
IL ROUTE 47	GRUNDY COUNTY LINE TO KANE COUNTY LINE															28						20				2				585	
US ROUTE 52	LASALLE COUNTY LINE TO WILL COUNTY LINE																		106					80			2				
IL ROUTE 71	LASALLE COUNTY LINE TO US ROUTE 34															13			130			11		92			2				
IL ROUTE 126	IL ROUTE 47 TO WILL COUNTY LINE															18			59			12		42			2				
SUBTOTALS		246			295			191		214		5		8		0	1743														
TOTAL		246			295			191		214		5		8		1743															

CURB REFLECTOR: MIN 3 PER SIDE, 40 FT C-C, 3 REFL ON APPROACH ENDS, 20 FT C-C ON TAPERS.
 GUARDRAIL REFLECTOR: MINIMUM 4 REFLECTORS, 80 FT C-C.
 LINEAR DELINEATOR PANELS 4": SPACED BETWEEN GUARDRAIL REFLECTORS FOR NEW INSTALL AND REPAIR EXISTING AS NEEDED.
 LINEAR DELINEATOR PANELS 6": REPAIR EXISTING AS NEEDED.

NOTE: REFLECTOR & PANEL COLOR TO MATCH ADJACENT PAVEMENT STRIPE

MODEL: Default
 FILE NAME: p:\u005cproject\paw_bentley.com\FW\DOT\Documents\DOT Office\Dir\rdt_3\Project\0346589\CADD\DATA\0346589 - PLANS.dgn

USER NAME = woodshank	DESIGNED - RW	REVISED -
	DRAWN - RW	REVISED -
PLOT SCALE = 100,0000 ' / in.	CHECKED - YP	REVISED -
PLOT DATE = 2/4/2022	DATE - 2/4/2022	REVISED -

**STATE OF ILLINOIS
DEPARTMENT OF TRANSPORTATION**

**SCHEDULES
KENDALL COUNTY**

SCALE: SHEET 1 OF 1 SHEETS STA. TO STA.

F.A. RTE.	SECTION	COUNTY	TOTAL SHEETS	SHEET NO.
VAR	D3 GRDRL DELIN MAINT INT 22-25	VARIOUS	17	9
			CONTRACT NO. 46589	
ILLINOIS FED. AID PROJECT				

DELINEATION SCHEDULE - FORD COUNTY

LOCATION		GUARDRAIL REFLECTORS TYPE A						LINEAR DELINEATOR PANELS 4 INCH				LINEAR DELINEATOR PANELS 6 INCH				CURB REFLECTORS							
		EACH						EACH				EACH				EACH							
		URBAN			RURAL			URBAN		RURAL		URBAN		RURAL		URBAN		RURAL					
		1 WAY CRYSTAL	2 WAY CRYSTAL	1 WAY AMBER	1 WAY CRYSTAL	2 WAY CRYSTAL	1 WAY AMBER	CRYSTAL	AMBER	CRYSTAL	AMBER	CRYSTAL	AMBER	CRYSTAL	AMBER	CRYSTAL	AMBER	CRYSTAL	AMBER				
IL ROUTE 9	MCLEAN COUNTY LINE TO VERMILION COUNTY LINE																						
US ROUTE 24	LIVINGSTON COUNTY LINE TO IROQUOIS COUNTY LINE																						
US ROUTE 45	IROQUOIS COUNTY LINE TO CHAMPAIGN COUNTY LINE																						
IL ROUTE 47	LIVINGSTON COUNTY LINE TO CHANPAIGN COUNT LINE																						
IL ROUTE 54	CHANPAIGN COUNTY LINE TO IROQUOIS COUNTY LINE																						
INTERSTATE 57	IROQUOIS COUNTY LINE TO CHANPAIGN COUNTY LINE																						
IL ROUTE 115	KANKAKEE COUNTY LINE TO IL ROUTE 9																						
IL ROUTE 116	LIVINGSTONG COUNTY LINE TO IROQUOIS COUNTY LINE																						
SUBTOTALS		30			96			10		4		766		10		4		6		64		175	
TOTAL		30			1000			14		776		4		6		239							

CURB REFLECTOR: MIN 3 PER SIDE, 40 FT C-C, 3 REFL ON APPROACH ENDS, 20 Ft C-C ON TAPERS.
 GUARDRAIL REFLECTOR: MINIMUM 4 REFLECTORS, 80 FT C-C.
 LINEAR DELINEATOR PANELS 4": SPACED BETWEEN GUARDRAIL REFLECTORS FOR NEW INSTALL AND REPAIR EXISTING AS NEEDED.
 LINEAR DELINEATOR PANELS 6": INTERSTATE 57 (I-57) PIER WALLS (WHERE NO GUARDRAIL IS INSTALLED) AND REPAIR EXISTING AS NEEDED.

NOTE: REFLECTOR & PANEL COLOR TO MATCH ADJACENT PAVEMENT STRIPE

MODEL: Default
 FILE NAME: p:\bullet-new-bead\p\p\DOT\Documents\DOT Office\Dir\rdt_3\Project\0346589\CADD\data\0346589 - PLANS.dgn

USER NAME = woodshank	DESIGNED - RW	REVISED -
	DRAWN - RW	REVISED -
PLOT SCALE = 100,0000' / in.	CHECKED - YP	REVISED -
PLOT DATE = 2/4/2022	DATE - 2/4/2022	REVISED -

**STATE OF ILLINOIS
DEPARTMENT OF TRANSPORTATION**

**SCHEDULES
FORD COUNTY**

SCALE: SHEET 1 OF 1 SHEETS STA. TO STA.

F.A. RTE.	SECTION	COUNTY	TOTAL SHEETS	SHEET NO.
VAR	D3 GRDRL DELIN MAINT INT 22-25	VARIOUS	17	10
			CONTRACT NO. 46589	
		ILLINOIS FED. AID PROJECT		

DELINEATION SCHEDULE - KANKAKEE COUNTY

LOCATION		GUARDRAIL REFLECTORS TYPE A						LINEAR DELINEATOR PANELS 4 INCH				LINEAR DELINEATOR PANELS 6 INCH				CURB REFLECTORS			
		EACH						EACH				EACH				EACH			
		URBAN			RURAL			URBAN		RURAL		URBAN		RURAL		URBAN		RURAL	
		1 WAY CRYSTAL	2 WAY CRYSTAL	1 WAY AMBER	1 WAY CRYSTAL	2 WAY CRYSTAL	1 WAY AMBER	CRYSTAL	AMBER	CRYSTAL	AMBER	CRYSTAL	AMBER	CRYSTAL	AMBER	CRYSTAL	AMBER	CRYSTAL	AMBER
IL ROUTE 1	IROQUOIS COUNTY LINE TO JCT. IL ROUTE 1/17 TO WILL COUNTY LINE																		
IL ROUTE 17	LIVINGSTON COUNTY LINE TO INDIANA STATE LINE																		
IL ROUTE 1/17	SOUTH JCT. IL ROUTE 1/17 TO NORTH JCT. IL ROUTE 1/17 (GRANT PARK)																		
US ROUTE 45/52	IROQUOIS COUNTY LINE TO WILL COUNTY LINE																		
IL ROUTE 50	US ROUTE 45/52 (KANKAKEE) TO WILL COUNTY LINE																		
INTERSTATE 57 NB	IROQUOIS COUNTY LINE TO WILL COUNTY LINE																		
INTERSTATE 57 SB	WILL COUNTY LINE TO IROQUOIS COUNTY LINE																		
IL ROUTE 102	WILL COUNTY LINE TO US ROUTE 45/52 (BOURBONNAIS)																		
IL ROUTE 113	WILL COUNTY LINE TO IL ROUTE 17 (KANKAKEE)																		
IL ROUTE 114	IL ROUTE 1/17 (MOMENCE) TO INDIANA STATE LINE																		
IL ROUTE 115	FORD COUNTY LINE (CABERY) TO US ROUTE 45/52																		
SUBTOTALS		177	12	72	169	588	51	36	12	700	87	16	0	8	0	152	881	78	83
TOTAL		261			808			48		787		16		8		1033		161	

CURB REFLECTOR: MIN 3 PER SIDE, 40 FT C-C, 3 REFL ON APPROACH ENDS, 20 FT C-C ON TAPERS.

GUARDRAIL REFLECTOR: MINIMUM 4 REFLECTORS, 80 FT C-C.

LINEAR DELINEATOR PANELS 4": SPACED BTWFFN GUARDRAIL REFLECTORS FOR NEW INSTALL AND REPAIR EXISTING AS NEEDED.

LINEAR DELINEATOR PANELS 6": INTERSTATE 57 (I-57) PIER WALLS (WHERE NO GUARDRAIL IS INSTALLED) AND REPAIR EXISTING AS NEEDED.

NOTE: REFLECTOR & PANEL COLOR TO MATCH ADJACENT PAVEMENT STRIPE

MODEL: Default
 FILE: \\mfe-pw-bentley.com\FW\DOT\Documents\DOT Office\Dir\dot_3\Project\0346589\CADD\DATA\0346589 - PLANS.dgn

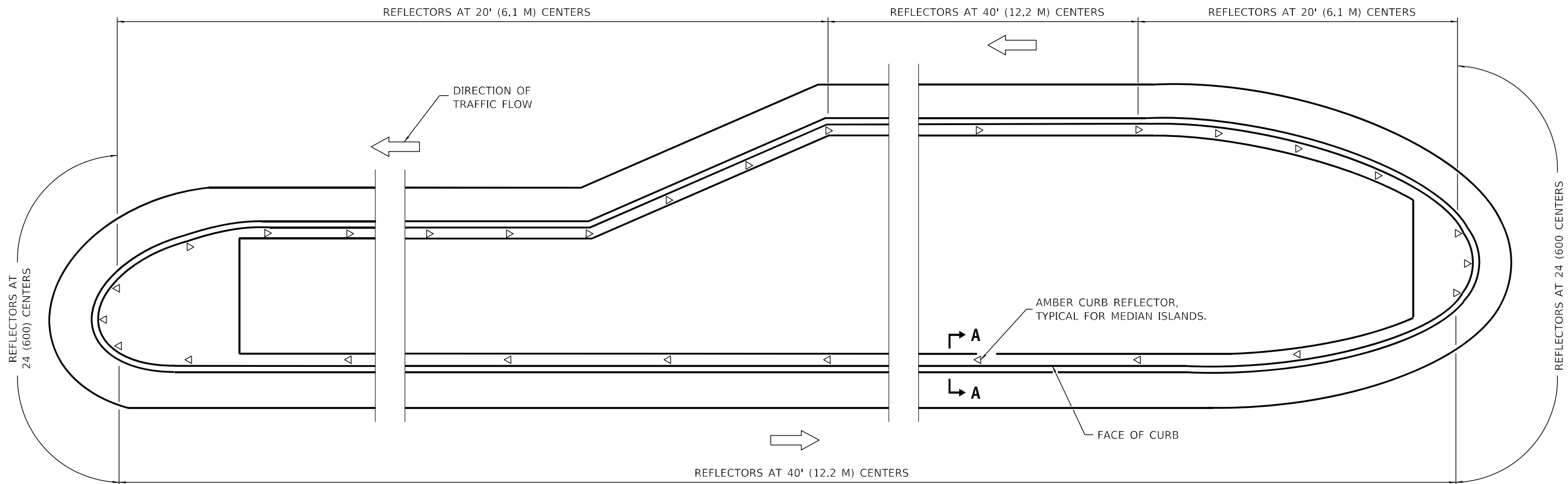
USER NAME = woodshank	DESIGNED - RW	REVISED -
	DRAWN - RW	REVISED -
PLOT SCALE = 100,0000' / in.	CHECKED - YP	REVISED -
PLOT DATE = 2/4/2022	DATE - 2/4/2022	REVISED -

**STATE OF ILLINOIS
DEPARTMENT OF TRANSPORTATION**

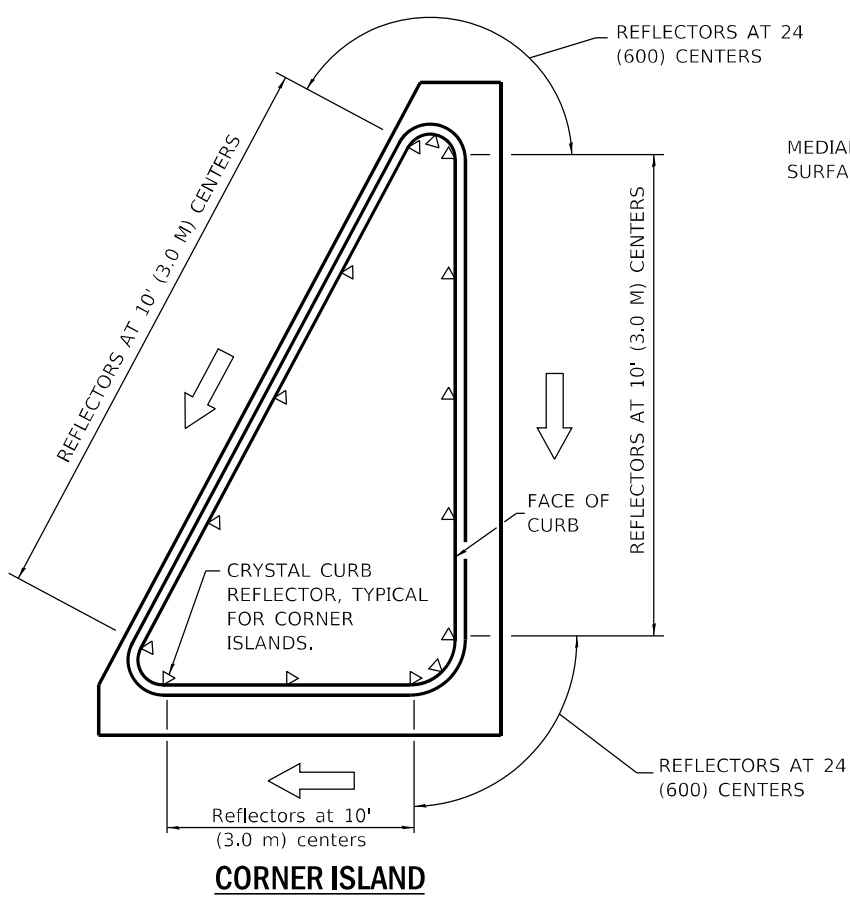
**SCHEDULES
KANKAKEE COUNTY**

SCALE: SHEET 1 OF 1 SHEETS STA. TO STA.

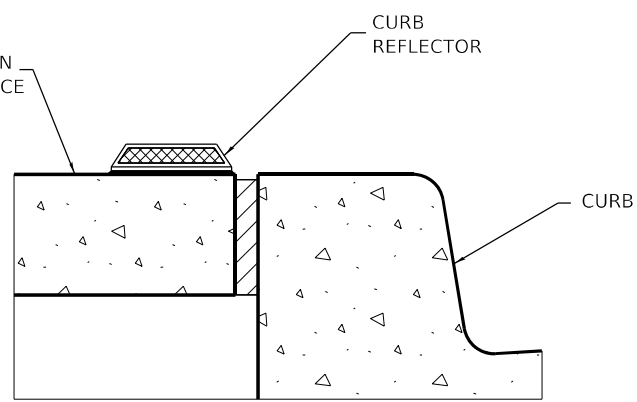
F.A. RTE.	SECTION	COUNTY	TOTAL SHEETS	SHEET NO.
VAR	D3 GRDRL DELIN MAINT INT 22-25	VARIOUS	17	12
			CONTRACT NO. 46589	
ILLINOIS FED. AID PROJECT				



MEDIAN ISLAND



CORNER ISLAND



SECTION A-A
(SIMILAR FOR CORNER ISLANDS.)

GENERAL NOTES

CURB REFLECTORS SHALL BE MONODIRECTIONAL AND ORIENTED WITH THE REFLECTIVE FACE TOWARD APPROACHING TRAFFIC.

ALL DIMENSIONS ARE IN INCHES (MILLIMETERS) UNLESS OTHERWISE SHOWN.

CURB REFLECTORS

MODEL: Default
FILE NAME: p:\project-cw-beadley.com\PIV\DOT\Documents\DOT Office\Dir\dir: 3\Project\0346589\CADD\DATA\0346589 - PLANS.dwg

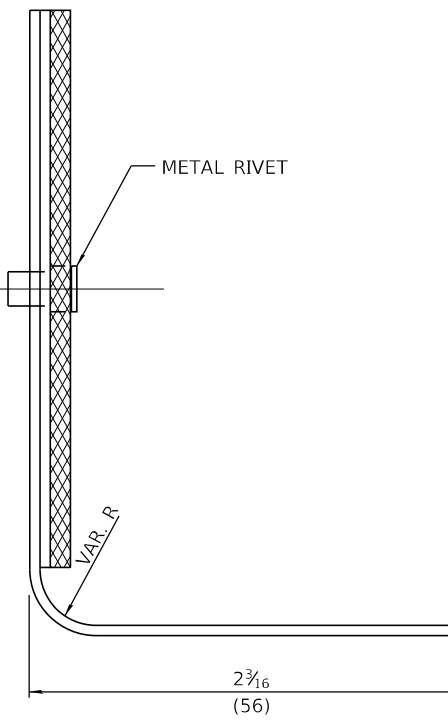
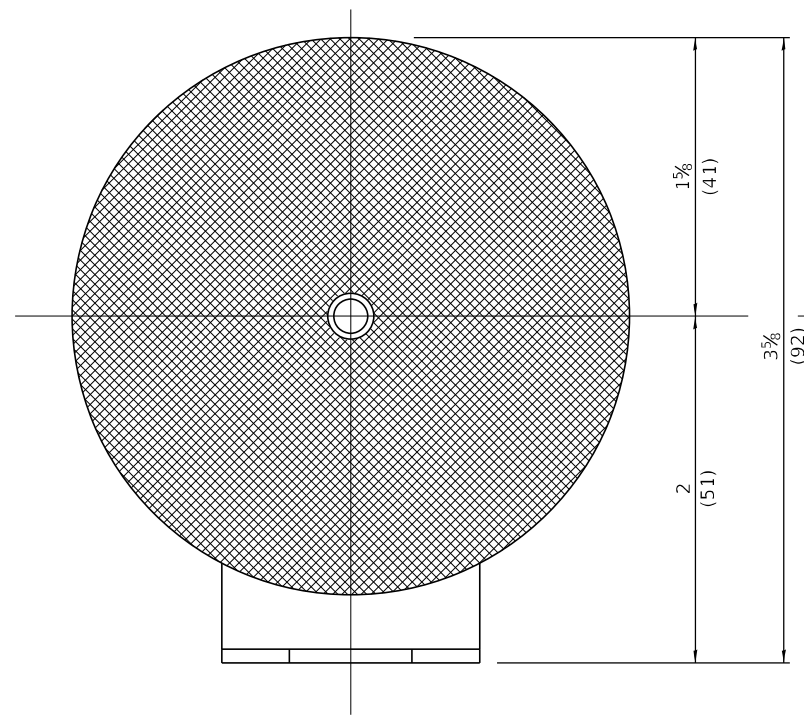
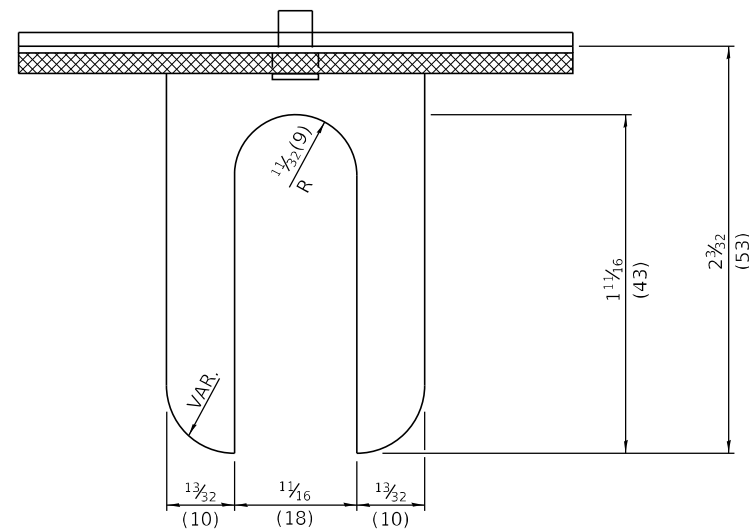
USER NAME = woodshank	DESIGNED - RW	REVISED -
DRAWN - RW	REVISIONS -	
PLOT SCALE = 100,0000' / in.	CHECKED - YP	REVISED -
PLOT DATE = 2/4/2022	DATE - 2/4/2022	REVISED -

STATE OF ILLINOIS
DEPARTMENT OF TRANSPORTATION

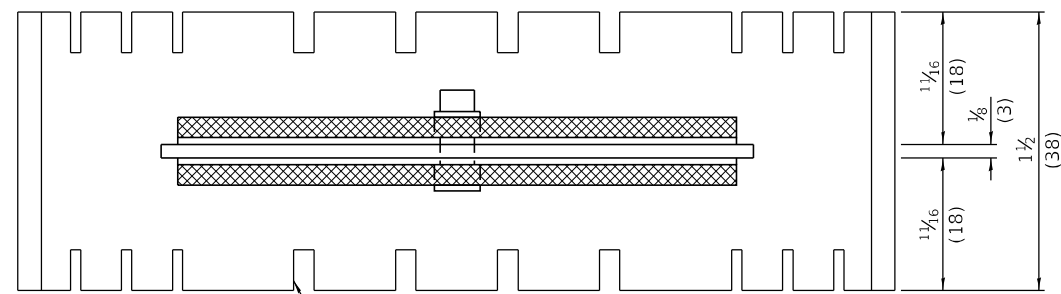
DETAILS

SCALE: SHEET 1 OF 5 SHEETS STA. TO STA.

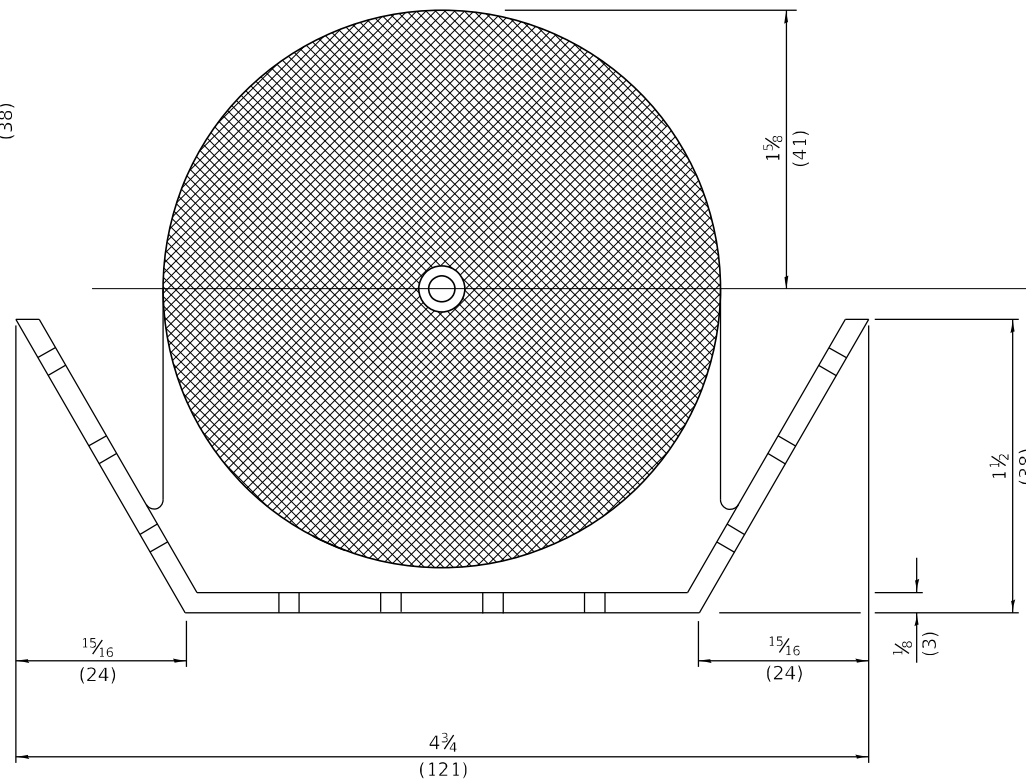
F.A. RTE.	SECTION	COUNTY	TOTAL SHEETS	SHEET NO.
VAR	D3 GRDRL DELIN MAINT INT 22-25	VARIOUS	17	13
			CONTRACT NO. 46589	
ILLINOIS FED. AID PROJECT				



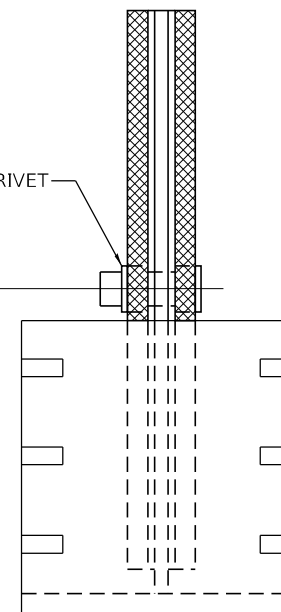
REFLECTOR TYPE A
(MONODIRECTIONAL SHOWN)



ADHESIVE WEEP SLOTS OR HOLES
EQUALLY SPACED ON BOTH SIDES



BRASS OR PLASTIC RIVET



REFLECTOR TYPE B
(BIDIRECTIONAL SHOWN)

GUARDRAIL AND BARRIER WALL REFLECTOR MOUNTING

MODEL: Default
FILE NAME: p:\bulletect-pw-bead-fy.com\FW\DOT\Documents\DOT Office\Dir\drct_3\Project\ID346589\CADD\data\ID346589 - PLANS.dwg

USER NAME = woodshank	DESIGNED - RW	REVISED -
	DRAWN - RW	REVISED -
PLOT SCALE = 100,0000 ' / in.	CHECKED - YP	REVISED -
PLOT DATE = 2/4/2022	DATE - 2/4/2022	REVISED -

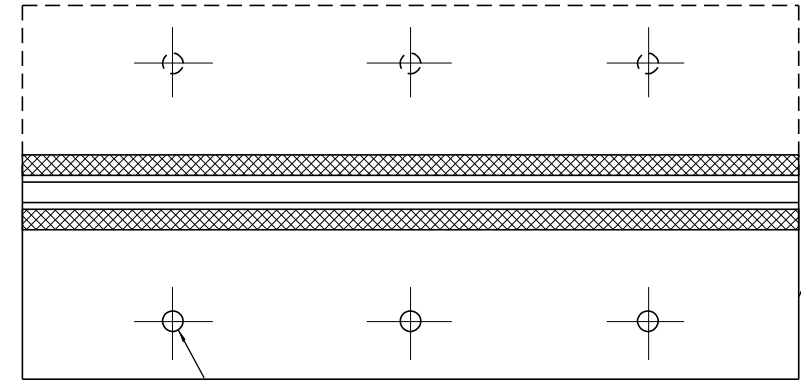
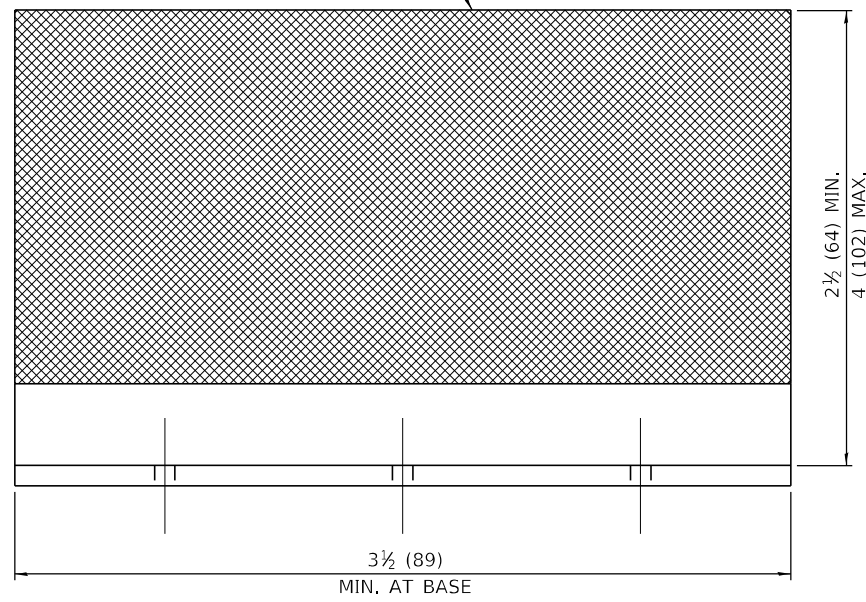
STATE OF ILLINOIS
DEPARTMENT OF TRANSPORTATION

DETAILS

SCALE: SHEET 2 OF 5 SHEETS STA. TO STA.

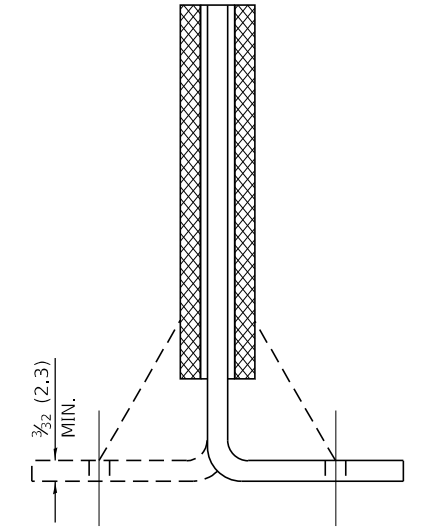
F.A. RTE.	SECTION	COUNTY	TOTAL SHEETS	SHEET NO.
VAR	D3 GRDRL DELIN MAINT INT 22-25	VARIOUS	17	14
CONTRACT NO. 46589			ILLINOIS FED. AID PROJECT	

REFLECTIVE AREA, MAY BE RECTANGULAR OR SLIGHT TRAPEZOID.



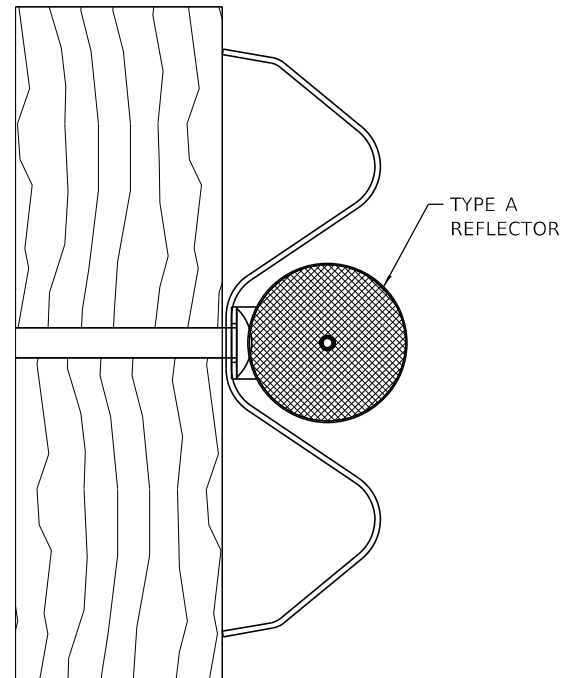
3 MIN. ADHESIVE WEEP HOLES OR SLOTS EACH SIDE, VARIABLE SPACING.

MINIMUM TOTAL AREA OF BASE 7.0 SQ. IN. (4,516 MM²)

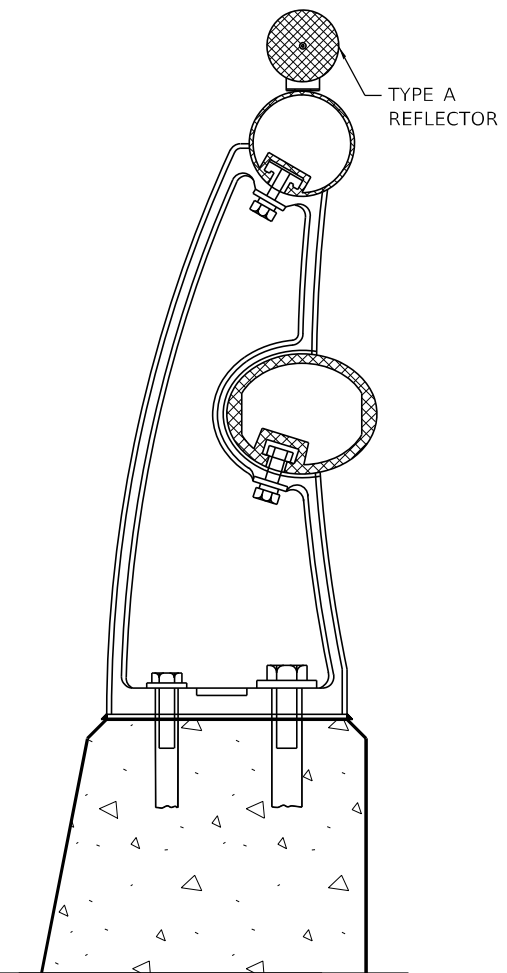
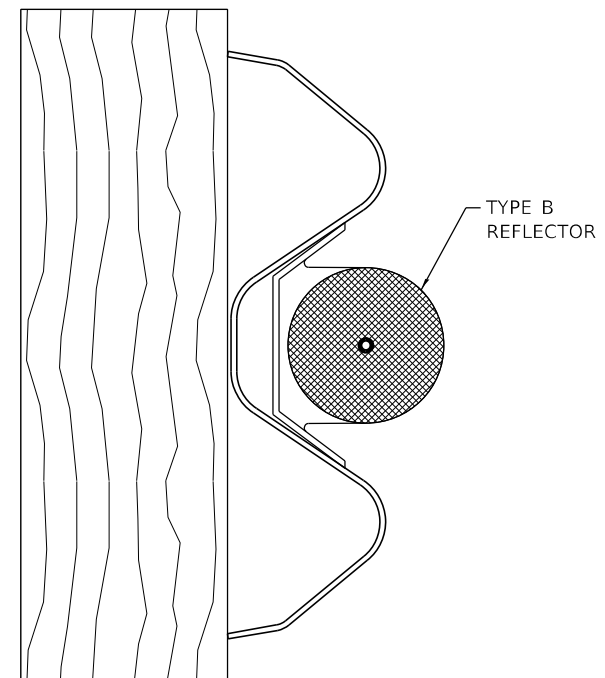


CROSS SECTION MAY BE "T" OR "L" SHAPED AND MAY HAVE SIDE SUPPORTS AT ENDS.

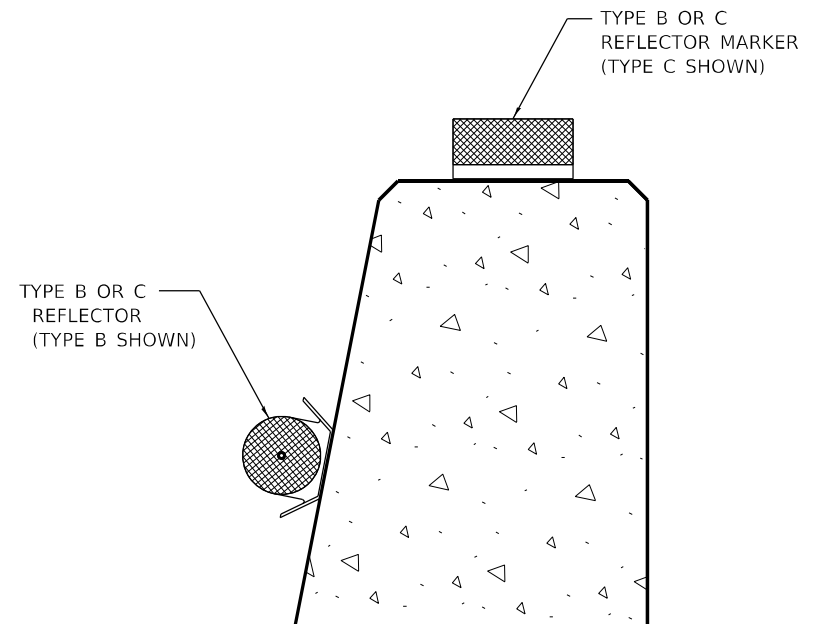
REFLECTOR TYPE C



TYPICAL MOUNTING DETAIL FOR GUARDRAIL REFLECTOR



TYPICAL MOUNTING DETAIL FOR BRIDGE RAIL REFLECTOR



TYPICAL MOUNTING DETAIL FOR BARRIER WALL REFLECTOR

GUARDRAIL AND BARRIER WALL REFLECTOR MOUNTING

MODEL: Default
FILE NAME: p:\project-new\beadefy.com\FW\DOT\Documents\DOT Office\District 3\Project\3146589\CADD\data\3146589 - PLANS.dwg

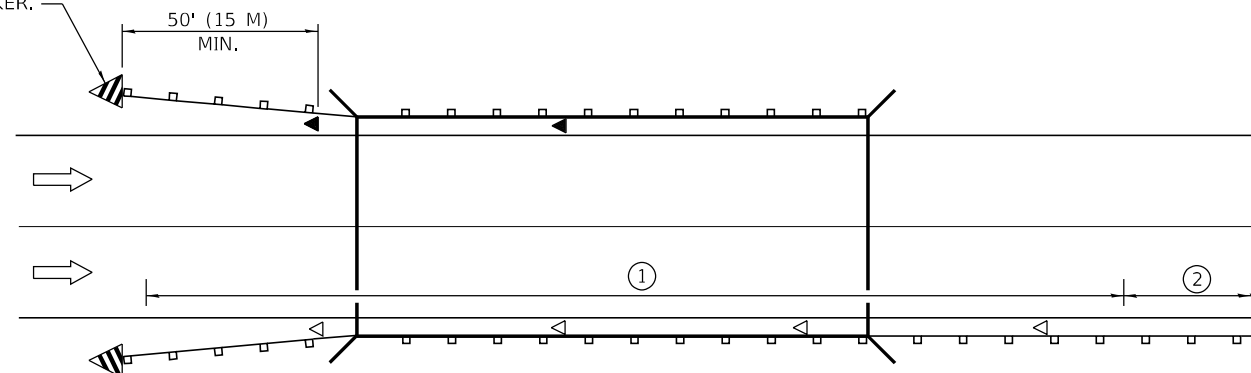
USER NAME = woodstank	DESIGNED - RW	REVISED -
PLOT SCALE = 100,0000 ' / in.	DRAWN - RW	REVISED -
PLOT DATE = 2/4/2022	CHECKED - YP	REVISED -
	DATE - 2/4/2022	REVISED -

**STATE OF ILLINOIS
DEPARTMENT OF TRANSPORTATION**

DETAILS	
SCALE:	SHEET 3 OF 5 SHEETS STA. TO STA.

F.A. RTE.	SECTION	COUNTY	TOTAL SHEETS	SHEET NO.
VAR	D3 GRDRL DELIN MAINT INT 22-25	VARIOUS	17	15
			CONTRACT NO. 46589	
ILLINOIS FED. AID PROJECT				

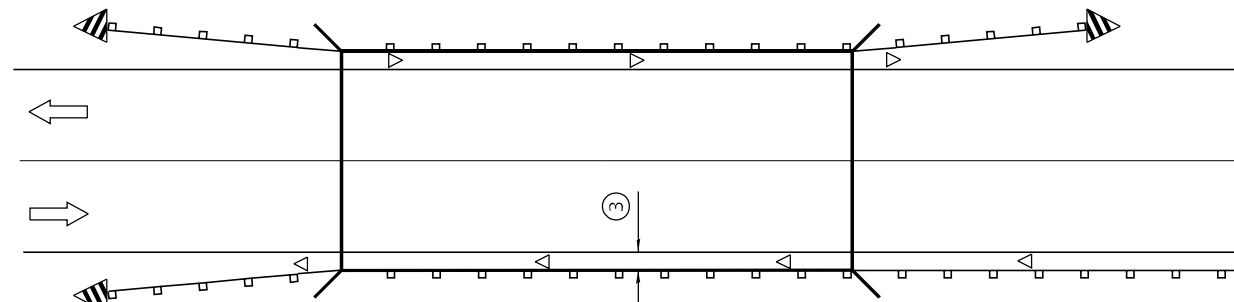
TERMINAL MARKER.
SEE STANDARD
725001.



① SPACING 80 FT. (24 M) MAX. FOR FIRST 400 FT. (122 M) OR CURVE SPACING SHOWN IN STANDARD 635001, WHICHEVER IS LESS (MIN. 4 REFLECTORS REGARDLESS OF LENGTH).

② AFTER 400 FT. (122 M), TRANSITION TO NORMAL DELINEATOR SPACING SHOWN IN STANDARD 635001, AND CONTINUE AS REQUIRED.

ONE-WAY TRAFFIC



③ WHERE THE SHOULDER WIDTH IS REDUCED TO LESS THAN 24 (610), USE BIDIRECTIONAL CRYSTAL/CRYSTAL IN LIEU OF MONODIRECTIONAL CRYSTAL.

◁ MONODIRECTIONAL CRYSTAL

◄ MONODIRECTIONAL AMBER

TWO-WAY TRAFFIC

**GUARDRAIL / BARRIER WALL
REFLECTOR PLACEMENT DETAIL**

GUARDRAIL AND BARRIER WALL REFLECTOR MOUNTING

MODEL: Default
FILE NAME: p:\ultra\paw.bentley.com\P\I\DOT\Documents\DOT Office\Dir\dr. 3\Project\10346589\CADD\DATA\10346589 - PLANS.dgn

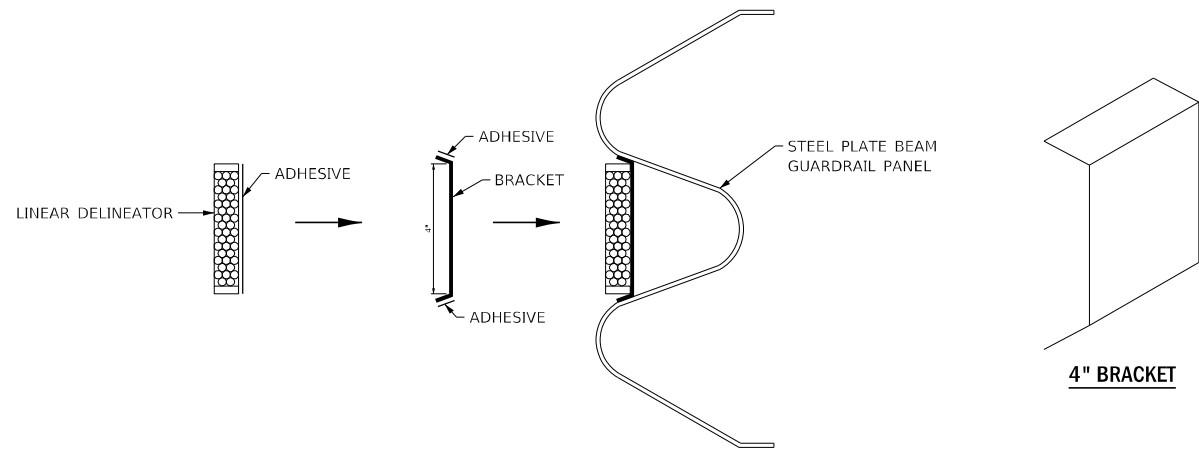
USER NAME = woodshank	DESIGNED - RW	REVISED -
	DRAWN - RW	REVISED -
PLOT SCALE = 100,0000' / in.	CHECKED - YP	REVISED -
PLOT DATE = 2/4/2022	DATE - 2/4/2022	REVISED -

**STATE OF ILLINOIS
DEPARTMENT OF TRANSPORTATION**

DETAILS

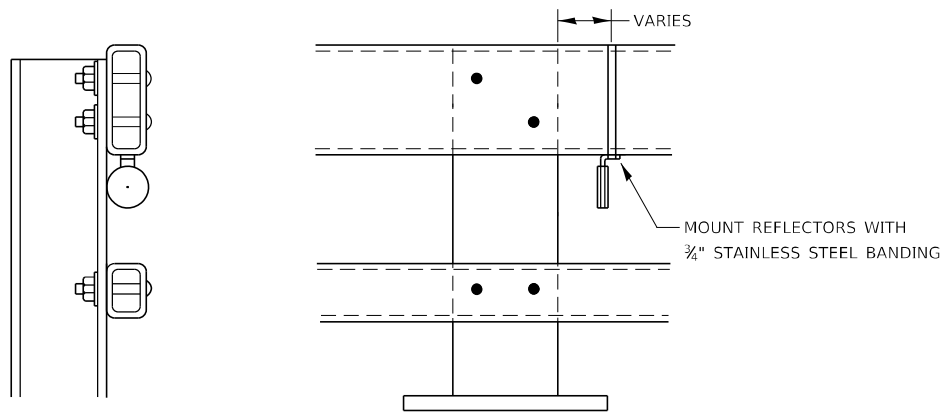
SCALE: SHEET 4 OF 5 SHEETS STA. TO STA.

F.A. RTE.	SECTION	COUNTY	TOTAL SHEETS	SHEET NO.
VAR	D3 GRDRL DELIN MAINT INT 22-25	VARIOUS	17	16
			CONTRACT NO. 46589	
			ILLINOIS FED. AID PROJECT	



LINEATOR DELINEATOR APPLICATION TO STANDARD GALVANIZED GUARDRAIL

LINEATOR DELINEATOR SHALL BE APLIED ACCORDING TO THE MANUFACTURER'S RECOMMENDATIONS



NOTES

- REFLECTORS SHALL MEET THE REQUIREMENTS OF ARTICLE 1097.03 OF THE STANDARD SPECIFICATIONS.
- FURNISHING AND INSTALLING THE COMPLETE REFLECTOR UNIT WILL BE PAID AT THE CONTRACT UNIT PRICE EACH FOR GUARD RAIL MARKERS.

**REFLECTOR MOUNTING
DETAIL FOR STEEL RAIL**

MISCELLANEOUS MOUNTING

MODEL: Default
FILE NAME: p:\ultra-cw-beadray.com\PIV\DOT\Documents\DOT Office\Dir\ref: 3\Project\ID346589\CADD\data\ID346589 - PLANS.dwg

USER NAME = woodshank	DESIGNED - RW	REVISED -
	DRAWN - RW	REVISED -
PLOT SCALE = 100,0000 ' / in.	CHECKED - YP	REVISED -
PLOT DATE = 2/4/2022	DATE - 2/4/2022	REVISED -

**STATE OF ILLINOIS
DEPARTMENT OF TRANSPORTATION**

DETAILS

SCALE: SHEET 5 OF 5 SHEETS STA. TO STA.

F.A. RTE.	SECTION	COUNTY	TOTAL SHEETS	SHEET NO.
VAR	D3 GRDRL DELIN MAINT INT 22-25	VARIOUS	17	17
			CONTRACT NO. 46589	
ILLINOIS FED. AID PROJECT				