

STATE OF ILLINOIS  
DEPARTMENT OF TRANSPORTATION

F.A.I. RTE.	SECTION	COUNTY	TOTAL SHEETS	SHEET NO.
180	(78-1HB)BP	PUTNAM	13	1
		ILLINOIS	CONTRACT NO. 66M13	

**INDEX OF SHEETS**

1. COVER SHEET
2. GENERAL NOTES
3. SUMMARY OF QUANTITIES
4. TYPICAL SECTION
5. SCHEDULES - LOCATION NO. 1 STRUCTURE NO. 078-0022
6. TRAFFIC CONTROL AND PROTECTION, STANDARD 701400
7. TRAFFIC CONTROL AND PROTECTION, STANDARD 701402
8. TEMPORARY CONCRFETE BARRIER DELINEATION
9. TYPICAL PAVEMENT MARKING
- 10 - 13. EXISTING STRUCTURE DETAILS FOR LOCATION NO. 1 - STRUCTURE NO. 078-0022

**HIGHWAY STANDARDS**

- |           |  |
|-----------|--|
| 000001-08 | STANDARD SYMBOLS, ABBREVIATIONS AND PATTERNS                                   |
| 001006    | DECIMAL OF AN INCH AND OF A FOOT   |
| 701001-02 | OFF-ROAD OPERATIONS 2L, 2W, MORE THAN 15' (4.5 m) AWAY                         |
| 701006-05 | OFF-ROAD OPERATIONS 2L, 2W, 15' (4.5 m) TO 24" (600 mm) FROM PAVEMENT EDGE     |
| 701101-05 | OFF-ROAD OPERATIONS, MULTILANE, 15' (4.5 m) TO 24" (600 mm) FROM PAVEMENT EDGE |
| 701106-02 | OFF-ROAD OPERATIONS, MULTILANE, MORE THAN 15' (4.5 m) AWAY                     |
| 701201-05 | LANE CLOSURE, 2L, 2W, DAY ONLY, FOR SPEEDS ≥ 45 MPH                            |
| 701426-09 | LANE CLOSURE, MULTILANE INTERMITTENT OR MOVING OPERATION, FOR SPEEDS ≥ 45 MPH  |
| 701901-08 | TRAFFIC CONTROL DEVICES  |
| 704001-08 | TEMPORARY CONCRETE BARRIER   |

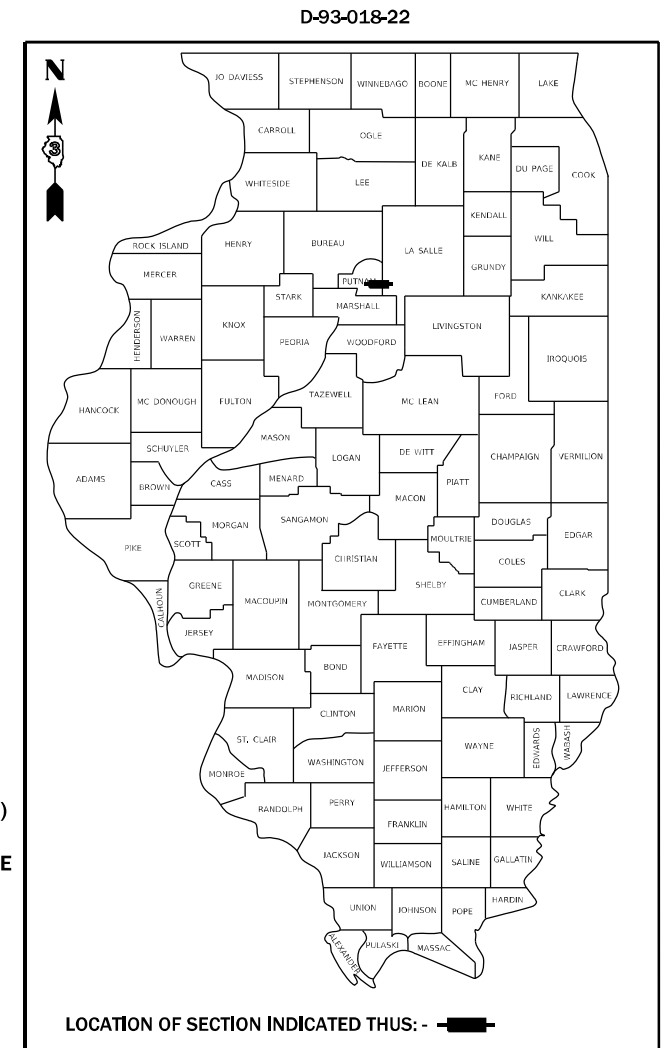
# PROPOSED HIGHWAY PLANS

F.A.I. ROUTE 180 (I-180)  
SECTION (78-1HB)BP  
PROJECT NHPP-KPHF(826)  
BRIDGE PAINTING  
PUTNAM COUNTY

C-93-038-22

**PROJECT LOCATION**

STRUCTURE NO. 078-0022  
CARRYING CH 1 OVER FAI 180 (I-180)  
APPROXIMATELY 0.46 MILES  
WEST OF I-180 AND IL 26 INTERSTAGE



**FUNCTIONAL CLASSIFICATION**

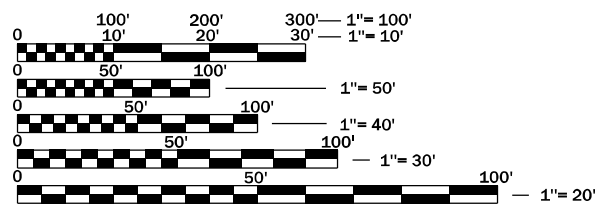
RURAL INTERSTATE  
F.A.I. ROUTE 180 (I-180)  
2019 ADT = 1,975  
P.V. 73.2 % S.U. 6.6 % M.U. 20.2 %

STATE OF ILLINOIS  
DEPARTMENT OF TRANSPORTATION

SUBMITTED March 18, 2022  
*[Signature]* REGIONAL ENGINEER

May 13, 2022 *[Signature]*  
ENGINEER OF DESIGN AND ENVIRONMENT

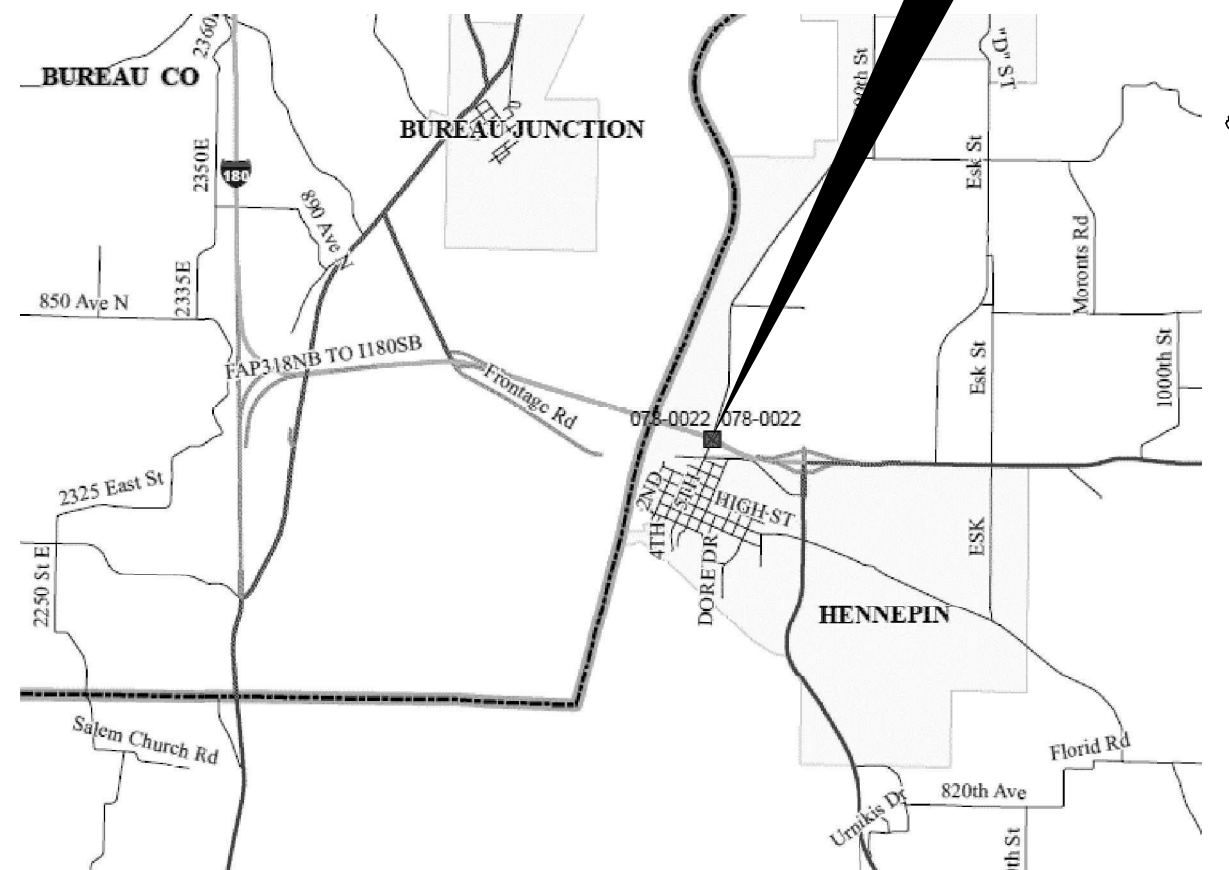
May 13, 2022 *[Signature]*  
DIRECTOR OF HIGHWAYS PROJECT IMPLEMENTATION



FULL SIZE PLANS HAVE BEEN PREPARED USING STANDARD ENGINEERING SCALES. REDUCED SIZED PLANS WILL NOT CONFORM TO STANDARD SCALES. IN MAKING MEASUREMENTS ON REDUCED PLANS, THE ABOVE SCALES MAY BE USED.

J.U.L.I.E.  
JOINT UTILITY LOCATION INFORMATION FOR EXCAVATION  
1-800-892-0123  
OR 811

PROJECT ENGINEER: YOGESH PATEL P.E.  
UNIT CHIEF: RON WOODSHANK  
DISTRICT 3 NO. (815) 434-6131  
CONTRACT NO. 66M13



PRINTED BY THE AUTHORITY  
OF THE STATE OF ILLINOIS

**GENERAL NOTES**

PLAN DIMENSIONS AND DETAILS RELATIVE TO EXISTING PLANS ARE SUBJECT TO NOMINAL CONSTRUCTION VARIATIONS. THE CONTRACTOR SHALL FIELD VERIFY EXISTING DIMENSIONS AND DETAILS AFFECTING NEW CONSTRUCTION AND MAKE APPROVED ADJUSTMENTS PRIOR TO ORDERING OF MATERIALS. SUCH VARIATIONS SHALL NOT BE CAUSE FOR ADDITIONAL COMPENSATION IN SCOPE OF WORK; HOWEVER, THE CONTRACTOR WILL BE PAID FOR THE QUANTITY ACTUALLY FURNISHED AT THE UNIT PRICE BID FOR THE WORK.

CLEANING AND PAINTING OF EXISTING STRUCTURAL STEEL BOX BEAMS, STEEL I BEAMS, STEEL GIRDERS AND STEEL COMPONENTS SHALL BE AS SPECIFIED IN THE FOLLOWING SPECIAL PROVISIONS.

"CONTAINMENT AND DISPOSAL OF NON-LEAD PAINT CLEANING RESIDUES".

"CLEANING AND PAINTING EXISTING STEEL STRUCTURES",

THE CONTRACTOR IS BE REQUIRED TO SECURE WASTE CONTAINERS THAT REMAIN ON THE JOB SITE. THIS WILL ENTAIL THAT ALL WASTE CONTAINERS CANNOT BE MOVED OR OPENED DURING NON-WORKING HOURS.

WORKING DAYS SHALL BE CHARGED UNTIL THE CONTRACTOR OR SUBCONTRACTOR LISCENSED TO DISPOSED OF LEAD/NON-LEAD PAINT RESIDUES HAS REMOVED THE WASTE MATERIAL FROM THE JOB SITE ACCORDING TO ALL FEDERAL, STATE AND LOCAL LAWS AND ORDINANCES. IF THE LISCENSED CONTRACTOR OR SUBCONTRACTOR FAILS TO DISPOSE OF THE LEAD/NON-LEAD PAINT RESIDUES ON OR BEFORE THE SPECIFIED DATE, LIQUIDATED DAMAGES SHALL BE CHARGED PER CALENDAR DAY ACCORDING TO ARTICLE 108.09 OF THE STANDARD SPECIFICATIONS UNTIL SUCH TIME THAT ALL PAINT RESIDUE MATERIALS HAVE BEEN REMOVED FROM THE JOB SITE AND DISPOSED OF.

**STRUCTURE NOTES**

**STRUCTURE NO. 078-0022 IS DESIGNATED AS "LOCATION 1".**

EXISTING STRUCTURAL STEEL COATING ON STRUCTURE NO. 078-0022 ARE "NON-LEAD" COATINGS.

SSPC-QP1, "PAINTING CONTRACTOR CERTIFICATIONS" SHALL BE REQUIRED FOR THIS STRUCTURE.

CLEANING AND PAINTING STRUCTURAL STEEL I BEAMS/GIRDERS. AND STEEL COMPONENTS.

CLEANING AND PAINTING OF EXISTING STRUCTURAL STEEL I-BEAMS AND STEEL COMPONENTS SHALL BE AS SPECIFIED IN THE APPLICABLE SPECIAL PROVISIONS AND AS SPECIFIED BELOW.

CLEANING.

ALL EXISTING STRUCTURAL STEEL, INCLUDING ALL SURFACES OF THE STEEL I BEAM, DIAPHRAGMS, STEEL COMPONENTS ASSEMBLIES, CROSS AND LATERAL BRACING, STEEL WEB STIFFENERS, DRAINS, STEEL ANGLE BRACKETS.

ALL EXISTING STRUCTURAL STEEL COMPONENTS AS DESCRIBED ABOVE SHALL BE CLEANED PER THE REQUIREMENTS OF "NEAR WHITE BLAST CLEANING - SSPC-SP-10".

PAINTING.

THE FINAL FINISH COAT FOR THE "EXTERIOR" FACE OF THE FASCIA BEAMS, THE BOTTOM FLANGE OF THE FASCIA BEAMS AND THE EXTERIOR BEARINGS SHALL BE "GREEN, MUNSELL NO. 7.5G 4/8.

THE FINAL FINISH COAT FOR THE INTERIOR SURFACE OF THE FASCIA BEAMS, ALL EXPOSED SURFACES OF THE INTERIOR BEAMS/ GIRDERS. STEEL COMPONENTS OF ALL INTERIOR BEARING ASSEMBLIES, CROSS AND LATERAL BRACING, STEEL STIFFENERS, DRAINS, STEEL ANGLE BRACKETS SHALL BE "GRAY, MUNSELL NO. 5B 7/1.

EXISTING STRUCTURE HANDRAILS ARE ALUMINUM. EXISTING HANDRAILS SHALL NOT BE INCLUDED IN THIS WORK.

**COMMITMENTS**

STATE OF ILLINOIS  
DEPARTMENT OF TRANSPORTATION  
DISTRICT THREE  
AS BUILT INFORMATION

\_\_\_\_\_  
SUPERVISING CONSTRUCTION FIELD ENGINEER

\_\_\_\_\_  
RESIDENT ENGINEER / TECHNICIAN

START & END DATES  
OF CONSTRUCTION:

INSPECTORS:

STATE OF ILLINOIS  
DEPARTMENT OF TRANSPORTATION  
DISTRICT THREE

PREPARED BY: \_\_\_\_\_  
DISTRICT STUDIES & PLANS ENGINEER

DATE: \_\_\_\_\_

EXAMINED BY: \_\_\_\_\_  
DISTRICT CONSTRUCTION ENGINEER

\_\_\_\_\_  
DISTRICT MATERIALS ENGINEER

\_\_\_\_\_  
DISTRICT OPERATIONS ENGINEER

MODEL: Default  
 FILE NAME: p:\project-new\bea\paw.com\PIV\DOT\Documents\DOT Office\District 3\Misc\Illinois\313\asbuilt\asbuilt.dwg  
 OPERATIONS: woodshank\l\LINEAR DELINEATOR FOR TEMPORARY CONCRETE BARRIER.dgn

USER NAME = woodshank\l	DESIGNED - RW	REVISED -
	DRAWN - RW	REVISED -
PLOT SCALE = 100,0000 ' / in.	CHECKED - YP	REVISED -
PLOT DATE = 3/17/2022	DATE - 2/5/2022	REVISED -

**STATE OF ILLINOIS  
DEPARTMENT OF TRANSPORTATION**

**GENERAL NOTES**

SCALE: SHEET 1 OF 1 SHEETS STA. TO STA.

F.A.I. RTE.	SECTION	COUNTY	TOTAL SHEETS	SHEET NO.
180	(78-1HB)BP	PUTNAM	13	2
			CONTRACT NO. 66M13	
		ILLINOIS FED. AID PROJECT		

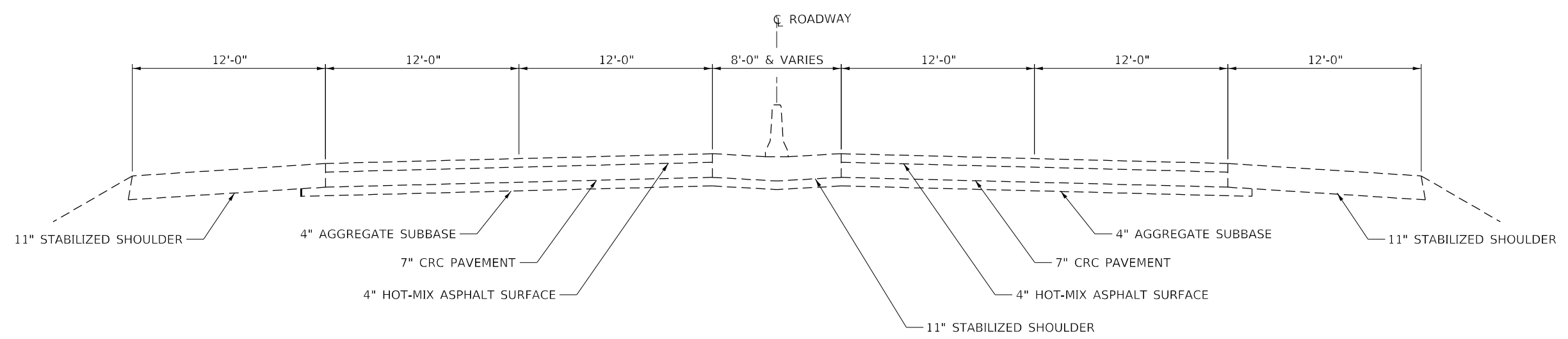
MODEL: Default  
 FILE NAME: p:\subject-pw-bentley.com\P\INDOT\Documents\DOT Office\District 3\Miscellaneous\3D\Images - Operations\woodshank\LINEAR DELINEATOR FOR TEMPORARY CONCRETE BARRIER.dgn

CODE NO.	ITEM	UNIT	TOTAL QUANTITY	CONSTRUCTION CODE	
				BRIDGE PAINTING 90% FED/10% STATE	BRIDGE 0047 S.N. 078-0022
67100100	MOBILIZATION	L SUM	1	1	
70100207	TRAFFIC CONTROL AND PROTECTION, STANDARD 701402	EACH	1	1	
70100450	TRAFFIC CONTROL AND PROTECTION, STANDARD 701201	L SUM	1	1	
70107025	CHANGEABLE MESSAGE SIGN	CAL DA	28	28	
70400100	TEMPORARY CONCRETE BARRIER	FOOT	350	350	
70400200	RELOCATE TEMPORARY CONCRETE BARRIER	FOOT	1050	1050	
70600251	IMPACT ATTENUATORS, TEMPORARY (NON- REDIRECTIVE, NARROW), TEST LEVEL 3	EACH	1	1	
70600352	IMPACT ATTENUATORS, RELOCATE (NON- REDIRECTIVE, NARROW), TEST LEVEL 3	EACH	3	3	
* 78008210	POLYUREA PAVEMENT MARKING TYPE I - LINE 4"	FOOT	2140	2140	
* 78008230	POLYUREA PAVEMENT MARKING TYPE I - LINE 6"	FOOT	1020	1020	
78300202	PAVEMENT MARKING REMOVAL - WATER BLASTING	SQ FT	1218	1218	
X5060601	CONTAINMENT AND DISPOSAL OF NON-LEAD PAINT CLEANING RESIDUES NO. 1	L SUM	1	1	
X5067501	BRIDGE CLEANING AND PAINTING WARRANTY NUMBER 1	L SUM	1	1	
Z0010501	CLEANING AND PAINTING STEEL BRIDGE, NO 1	L SUM	1	1	

\*= SPECIALTY ITEM

USER NAME = woodshank PLOT SCALE = 100,0000' / in. PLOT DATE = 3/17/2022	DESIGNED - RW DRAWN - RW CHECKED - YP DATE - 2/5/2022	REVISED - REVISED - REVISED - REVISED -	<b>STATE OF ILLINOIS DEPARTMENT OF TRANSPORTATION</b>	<b>SUMMARY OF QUANTITIES</b>	F.A.I. RTE. 180 SECTION (78-1HB)BP COUNTY PUTNAM TOTAL SHEETS 13 SHEET NO. 3 CONTRACT NO. 66M13	SCALE: SHEET 1 OF 1 SHEETS STA. TO STA.	ILLINOIS FED. AID PROJECT
--	--	--	---	------------------------------	--	---	---------------------------

MODEL: Default  
 FILE NAME: p:\subject\aw\_bentley.com\P\I\DOT\Documents\1\DOT Office\1\Drawings\1\Linear\DELINATOR FOR TEMPORARY CONCRETE BARRIER.dwg  
 Operations\woodshank\1\Linear\DELINATOR FOR TEMPORARY CONCRETE BARRIER.dwg



USER NAME = woodshank	DESIGNED - RW	REVISED -
	DRAWN - RW	REVISED -
PLOT SCALE = 100,0000 ' / in.	CHECKED - YP	REVISED -
PLOT DATE = 3/17/2022	DATE - 2/5/2022	REVISED -

**STATE OF ILLINOIS  
 DEPARTMENT OF TRANSPORTATION**

<b>TYPICALS</b>			
SCALE:	SHEET 1 OF 1 SHEETS	STA.	TO STA.

F.A.I. RTE.	SECTION	COUNTY	TOTAL SHEETS	SHEET NO.
180	(78-1HB)BP	PUTNAM	13	4
ILLINOIS FED. AID PROJECT			CONTRACT NO. 66M13	

**SCHEDULE - TRAFFIC CONTROL AND PROTECTION**  
**LOCATION NO. 1 - STRUCTURE NO. 078-0022**

LOCATION	TRAFFIC CONTROL AND PROTECTION STANDARD 701402	CHANGEABLE MESSAGE SIGN	TEMPORARY RUMBLE STRIPS (SPECIAL)	TEMPORARY CONCRETE BARRIER	RELOCATE TEMPORARY CONCRETE BARRIER	IMPACT ATTENUATORS, TEMPORARY NON-REDIRECTIVE, NARROW TEST LEVEL 3	IMPACT ATTENUATORS, RELOCATE NON-REDIRECTIVE, NARROW TEST LEVEL 3
	EACH	CAL DA	EACH	FOOR	FOOT	EACH	EACH
<b>TOTAL</b>	1	28	8	350	1050	1	3

**SCHEDULE - PAVEMENT MARKING**  
**LOCATION NO. 1 - STRUCTURE NO. 078-0022**

LOCATION	PAVEMENT MARKING REMOVAL WATERBLASTING		POLYUREA PAVEMENT MARKING TYPE I	POLYUREA PAVEMENT MARKING TYPE I
	LINE 4"	LINE 6"	LINE 4"	LINE 6"
	SQ FT		FOOT	FOOT
<b>NORTHBOUND LANES</b>				
STAGE I	177	255	535	
STAGE II	177		535	510
<b>SUBTOTAL</b>	354	255	1070	510
<b>SOUTHBOUND LANES</b>				
STAGE I	177	255	535	
STAGE II	177		535	510
<b>SUBTOTAL</b>	354	255	1070	510
<b>TOTAL</b>	1218		2140	1020

**SCHEDULE - CLEANING AND PAINTING**  
**LOCATION NO. 1 - STRUCTURE NO. 078-0022**

LOCATION	CONTAINMENT AND DISPOSAL LEAD PAINT CLEANING RESIDUES NO. 1	CLEANING AND PAINTING STEEL BRIDGE NO. 1	BRIDGE CLEANING AND PAINTING WARRANTY NUMBER 1
	L SUM	L SUM	L SUM
STRUCTURE NO. 050-0166	1	1	1
<b>TOTAL</b>	1	1	1

MODEL: Default  
 FILE NAME: p:\project-pw-bentley.com\p\w\dot\Documents\DOT Office\Dir\drct\_3\Misc\cell-neus1D3\names - Operations\woodshank\LINEAR DELINEATOR FOR TEMPORARY CONCRETE BARRIER.dgn

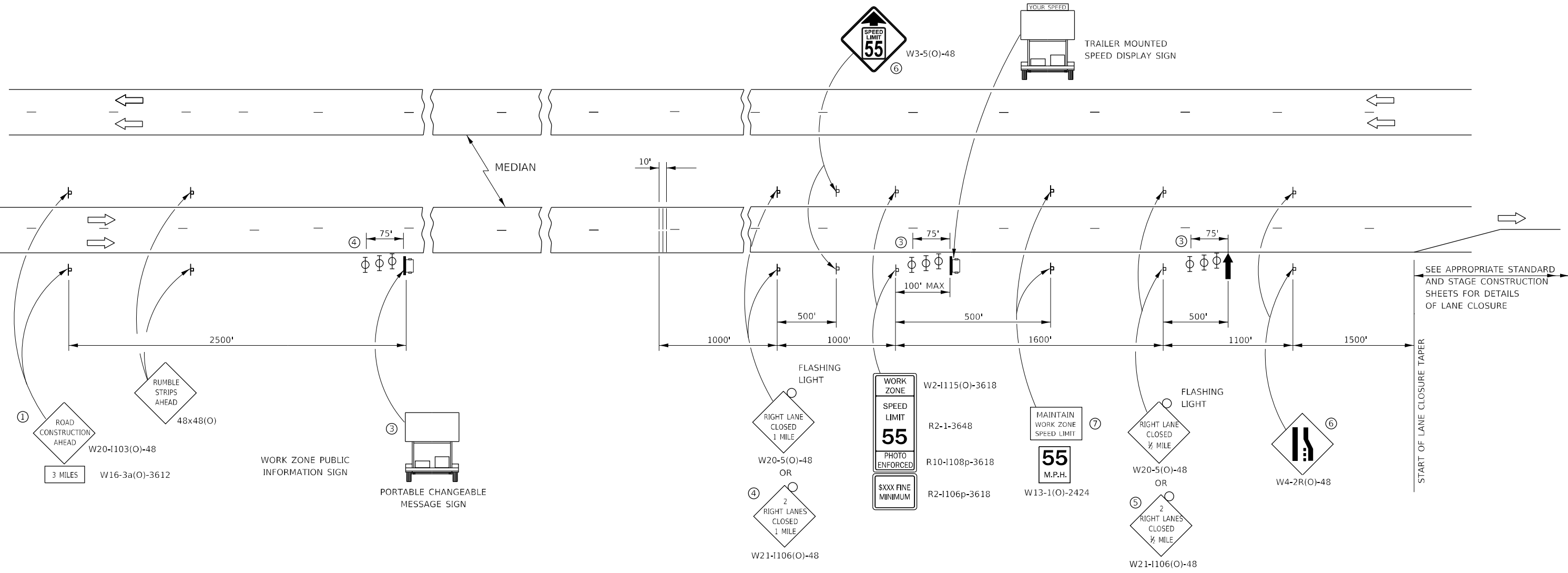
USER NAME = woodshank	DESIGNED - RW	REVISED -
	DRAWN - RW	REVISED -
PLOT SCALE = 100,0000' / in.	CHECKED - YP	REVISED -
PLOT DATE = 3/17/2022	DATE - 2/5/2022	REVISED -

**STATE OF ILLINOIS  
 DEPARTMENT OF TRANSPORTATION**

<b>SCHEDULES</b>			
SCALE:	SHEET 1	OF 1 SHEETS	STA. TO STA.

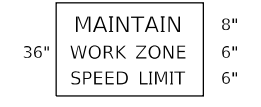
F.A.I. RTE.	SECTION	COUNTY	TOTAL SHEETS	SHEET NO.
180	(78-1HB)BP	PUTNAM	13	5
			CONTRACT NO. 66M13	
			ILLINOIS FED. AID PROJECT	

MODEL: Default  
 FILE: \\blm1p2\pub\subject-pw-beadley.com\FW\DOT\Documents\1\DOT Office\Drawings\3\Misc\Illinois\73\shanes Operations\workshop\blank\LINEAR DELINEATOR FOR TEMPORARY CONCRETE BARRIER.dwg



- ① THE ROAD CONSTRUCTION AHEAD SIGN SHALL BE LOCATED 3 MILES IN ADVANCE OF THE PROJECT LIMITS.
- ② TO BE PLACED IN THE MEDIAN WHEN FEASIBLE. THE MESSAGE BOARD SHALL BE USED TO DISPLAY STATUS OF LANES WITHIN THE PROJECT. THE PRIMARY MESSAGES SHALL BE:  
 "RIGHT LANE CLOSED" / " x MILES AHEAD"  
 "LEFT LANE CLOSED" / " x MILES AHEAD"  
 "ALL LANES OPEN"
- ③ THREE, TYPE II BARRICADES, DRUMS, OR VERTICAL BARRICADES AT 25' CENTERS.
- ④ THIS SIGN SHALL BE USED WHEN 2 LANES ARE CLOSED.
- ⑤ WHEN THE LEFT LANE IS CLOSED, SWITCH THESE TWO SIGNS AND THE DIRECTION OF THE MERGE ARROW.
- ⑥ THIS SIGN SHALL ONLY BE USED IF THE EXISTING SPEED LIMIT IS GREATER THAN 65 MPH.

- ⑦ 48"x36" FLUORESCENT ORANGE SIGN WITH BLACK LETTERS.  
48"



"MAINTAIN WORK ZONE SPEED LIMIT" SIGN SHALL NOT BE PAID FOR SEPARATELY BUT SHALL BE INCLUDED IN THIS TRAFFIC CONTROL STANDARD.

- ↑ ARROW BOARD
- ☐ PORTABLE CHANGEABLE MESSAGE SIGN
- ⊥ SIGN
- ⊕ TYPE II BARRICADE, DRUM, OR VERTICAL BARRICADE WITH MONODIRECTIONAL FLASHING LIGHT
- ▬▬▬ TEMPORARY RUMBLE STRIPS (SEE SPECIAL PROVISION)

**GENERAL NOTE:**

THIS STANDARD IS USED WHERE AT ANY TIME A LANE IS CLOSED ON A FREEWAY/EXPRESSWAY.

WHEN THE LEFT LANE IS CLOSED, LEFT LANE CLOSED SIGNS SHALL BE SUBSTITUTED FOR THE RIGHT LANE CLOSED SIGNS.

THE FIRST TWO SIGNS AND THE MESSAGE BOARD ARE STATIONARY. THE OTHER SIGNS AND ARROWBOARDS SHALL BE MOVED AS NECESSARY TO MAINTAIN THE REQUIRED DISTANCE FROM THE START OF THE LANE CLOSURE TAPER(S).

SEE SPECIAL PROVISIONS.

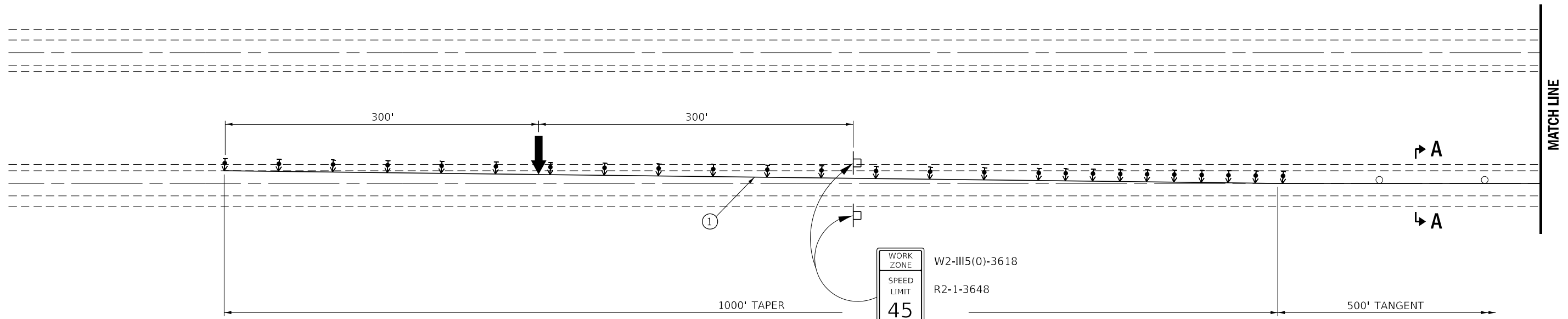
USER NAME = woodshank	DESIGNED - RW	REVISED -
	DRAWN - RW	REVISED -
PLOT SCALE = 100,0000' / in.	CHECKED - YP	REVISED -
PLOT DATE = 3/17/2022	DATE - 2/5/2022	REVISED -

**STATE OF ILLINOIS  
DEPARTMENT OF TRANSPORTATION**

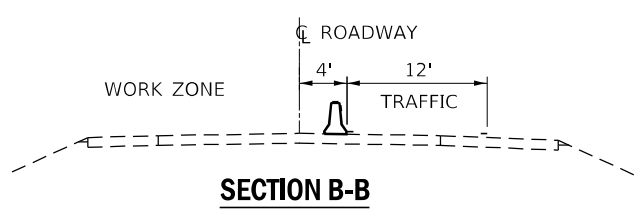
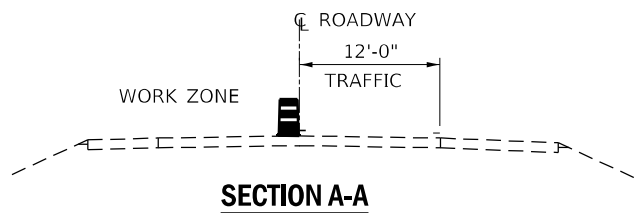
**TRAFFIC CONTROL AND PROTECTION, STANDARD 701400**

SCALE: SHEET 1 OF 1 SHEETS STA. TO STA.

F.A.I. RTE.	SECTION	COUNTY	TOTAL SHEETS	SHEET NO.
180	(78-1HB)BP	PUTNAM	13	6
CONTRACT NO. 66M13			ILLINOIS FED. AID PROJECT	

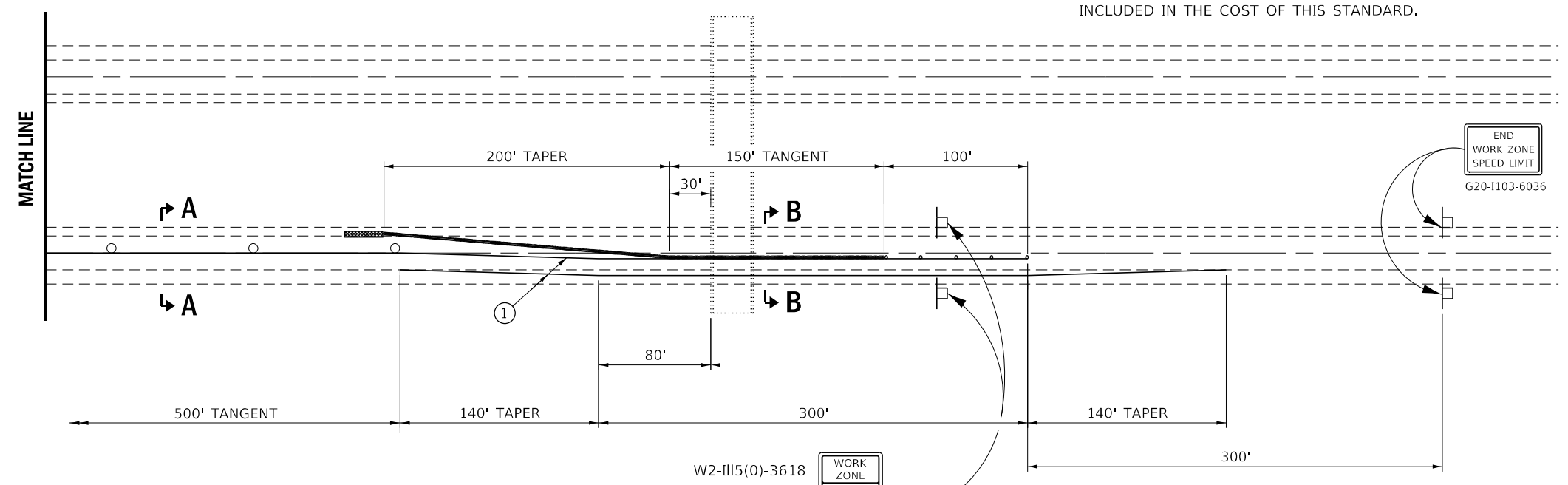


① TEMPORARY PAVEMENT MARKING TAPE SHALL BE PLACED THROUGHOUT THE TAPER AND ALONG-SIDE THE WORK AREA. THE RIGHT EDGE LINE SHALL BE WHITE AND THE LEFT EDGE LINE SHALL BE YELLOW. COST OF INSTALLING AND REMOVING THE TEMPORARY PAVEMENT MARKING TAPE SHALL BE INCLUDED IN THE COST OF THIS STANDARD.



**SYMBOLS**

- ARROW BOARD
- WORK AREA
- SIGN
- DIRECTION INDICATOR BARRICADE WITH STEADY BURN MONODIRECTIONAL LIGHT
- TRAFFIC CONTROL DRUM (TANGENT)
- TRAFFIC CONTROL DRUM, WITH STEADY BURN MONODIRECTIONAL LIGHT (TAPERS)
- TEMPORARY CONCRETE BARRIER
- MONODIRECTIONAL BARRIER WALL/GUARDRAIL MARKERS AT 25' CTS. MARKERS ON RIGHT SHALL BE SHALL BE CRYSTAL AND MARKERS ON LEFT SHALL BE AMBER.
- IMPACT ATTENUATOR



**GENERAL NOTES**

THIS STANDARD IS USED WHERE AT ANY TIME ANY VEHICLE, EQUIPMENT, WORKERS OR THEIR ACTIVITIES WILL ENCROACH ON THE PAVEMENT OR WITHIN 24" OF THE EDGE OF PAVEMENT OR SHOULDER FOR DAYLIGHT OPERATIONS EXCEEDING ONE DAY AND WHERE TEMPORARY CONCRETE BARRIER IS UTILIZED.

THIS STANDARD MUST ALWAYS BE USED IN COMBINATION WITH STANDARD 701400.

TEMPORARY CONCRETE BARRIER SHALL BE ACCORDING TO STANDARD 704001.

WHENEVER WORK IS PERFORMED FROM THE BRIDGE DECK, TRAFFIC CONTROL AND PROTECTION SHALL BE ACCORDING TO STANDARD 701201.

WHENEVER WORK IS BEING PERFORMED IN THE ADJACENT LANE, TRAFFIC CONTROL SHALL BE A MIRROR IMAGE OF WHAT IS SHOWN.

MODEL: Default FILE NAME: p:\pub\std-cw-beadefy.com\PIVDOT\Documents\DOT Office\Std\Traffic 3\Misc\Illinois\3D\3dnames Operations\woodshank\LINEAR DELINEATOR FOR TEMPORARY CONCRETE BARRIER.dgn

USER NAME = woodshank	DESIGNED - RW	REVISED -
DRAWN - RW	CHECKED - YP	REVISED -
PLOT SCALE = 100,0000' / in.	DATE - 2/5/2022	REVISED -
PLOT DATE = 3/17/2022		

**STATE OF ILLINOIS  
DEPARTMENT OF TRANSPORTATION**

**TRAFFIC CONTROL AND PROTECTION, STANDARD 701402  
FOR LOCATION NO. 1**

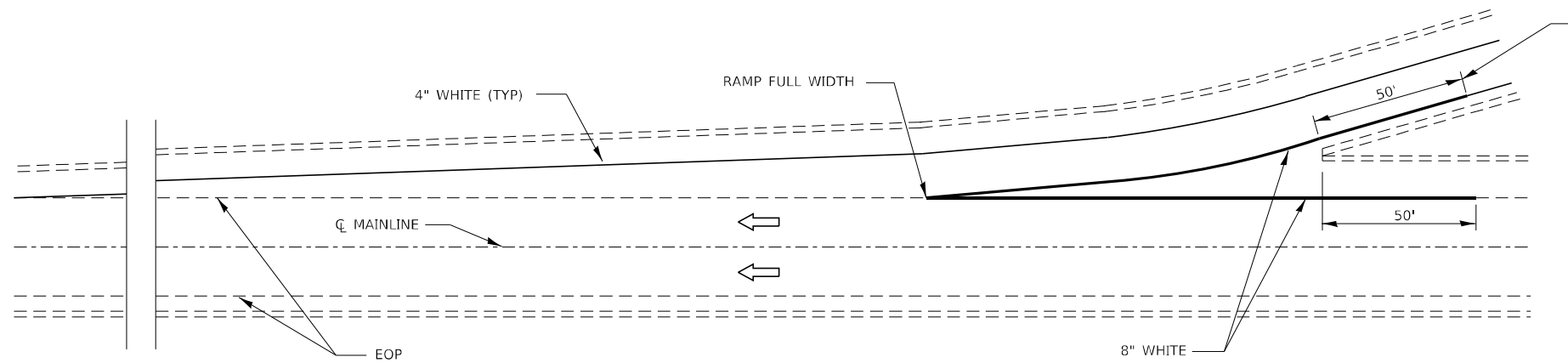
SCALE: SHEET 1 OF 1 SHEETS STA. TO STA.

F.A.I. RTE.	SECTION	COUNTY	TOTAL SHEETS	SHEET NO.
180	(78-1HB)BP	PUTNAM	13	7
CONTRACT NO. 66M13			ILLINOIS FED. AID PROJECT	

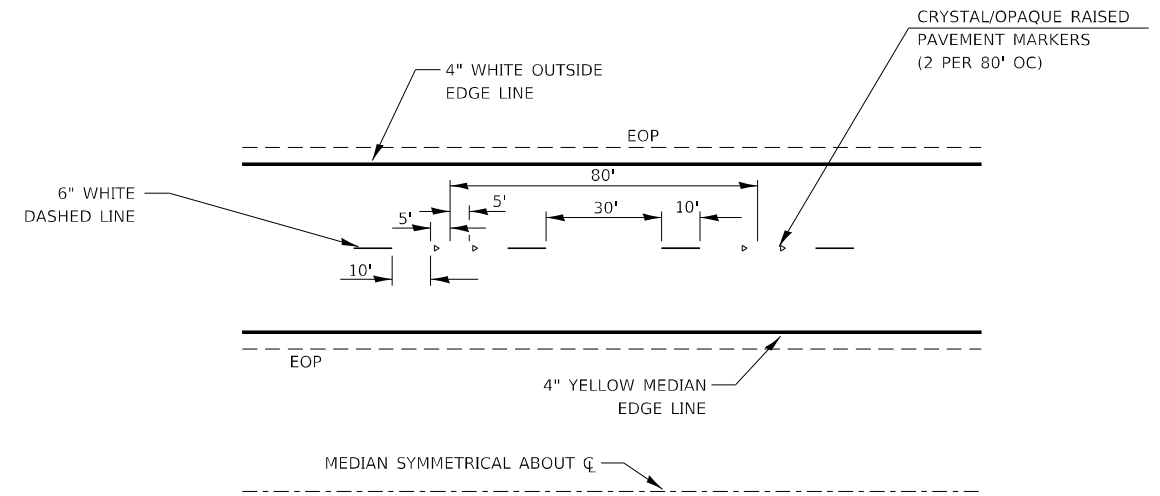




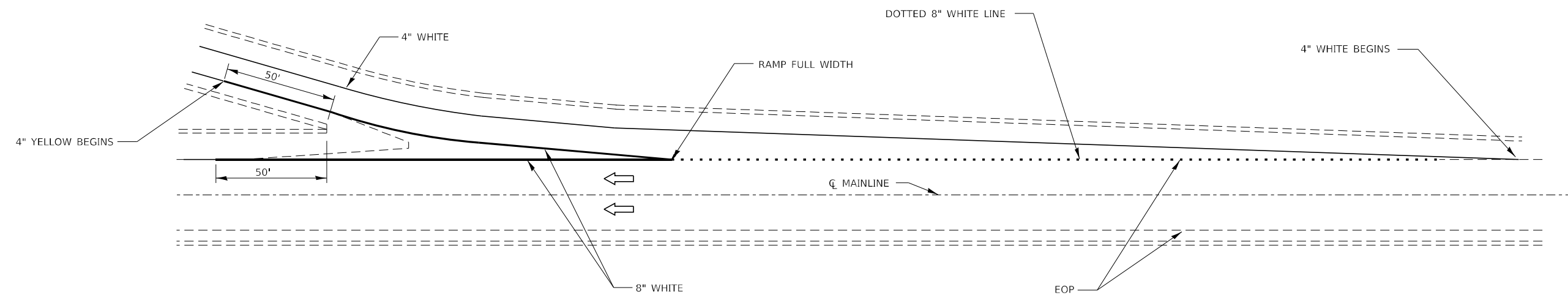
MODEL: Default  
 FILE NAME: p:\subject-pw-bentley.com\PIV\DOT\Documents\DOT Office\Drawings\3\Misc\Illinois\3D3\Drawings\Operations\woodshank\LINEAR DELINEATOR FOR TEMPORARY CONCRETE BARRIER.dwg



**TYPICAL PAVEMENT MARKING FOR ENTRANCE RAMP TERMINALS  
INTERSTATES**



**TYPICAL PAVEMENT MARKINGS  
INTERSTATES**



**TYPICAL PAVEMENT MARKINGS FOR EXIT RAMP TERMINALS  
INTERSTATES**

USER NAME = woodshank	DESIGNED - RW	REVISED -
	DRAWN - RW	REVISED -
PLOT SCALE = 100,0000' / in.	CHECKED - YP	REVISED -
PLOT DATE = 3/17/2022	DATE - 2/5/2022	REVISED -

**STATE OF ILLINOIS  
DEPARTMENT OF TRANSPORTATION**

<b>PAVEMENT STRIPING</b>			
SCALE:	SHEET 1 OF 1 SHEETS	STA.	TO STA.

F.A.I. RTE.	SECTION	COUNTY	TOTAL SHEETS	SHEET NO.
180	(78-1HB)BP	PUTNAM	13	9
CONTRACT NO. 66M13			ILLINOIS FED. AID PROJECT	

NO.	SECTION	COUNTY	TOTAL SHEETS	SHEET NO.
FA180	78-1HB	PUTNAM	161	49
TO STA. 1-180-7(9)				

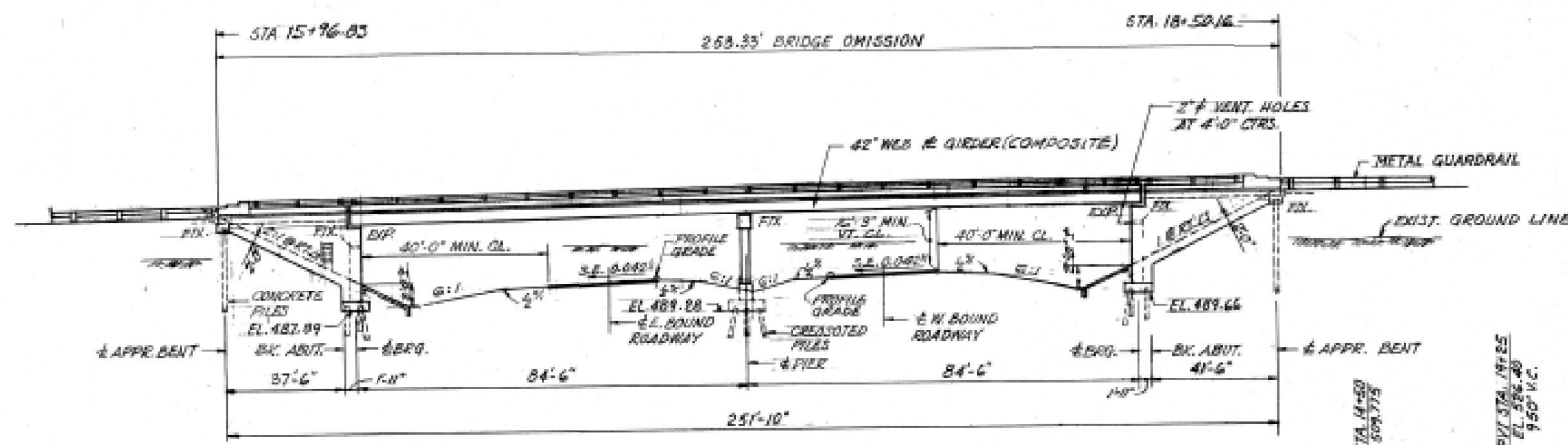
SHEET 1 OF 15

INDEX OF SHEETS

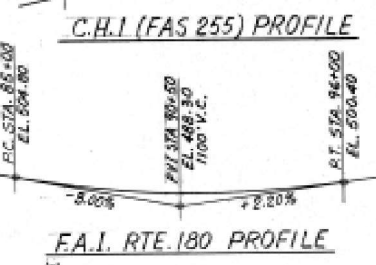
SHEET NO.	TITLE
1.	GENERAL PLAN
2.	BORINGS
3.	DECK PLAN
4.	APPROACH SPANS
5.	HANDRAIL ELEV. & APPROACH SPAN BAR DETAILS
6.	ALUMINUM HANDRAIL, TYPE L
7.	METAL HANDRAIL, TYPE M
8.	BOX BEAM DETAILS
9.	TOP OF SLAB ELEVATIONS
10.	FRAMING PLAN
11.	STEEL DETAILS
12.	NORTH ABUTMENT
13.	SOUTH ABUTMENT
14.	PIER
15.	ABUTMENT PILES

BRIDGE GENERAL NOTES

CLASS X CONCRETE SHALL BE USED THROUGHOUT EXCEPT AS OTHERWISE NOTED. CONCRETE FOR FLOOR SLABS SHALL BE PLACED IN ONE CONTINUOUS OPERATION BETWEEN CONSTRUCTION JOINTS SHOWN AND SHALL BE FINISHED IN ACCORDANCE WITH ARTICLE 51.19 OF THE STANDARD SPECIFICATIONS. COARSE AGGREGATE TO BE USED IN PARAPET HANDRAILS AND WINGWALLS OF ABUTMENTS MUST BE ABSOLUTELY FREE OF CHERT, FLINT, LIMONITE, LIGNITE AND SOFT SANDSTONE. PERMANENT FORMS WILL NOT BE PERMITTED IN FORMING THE CONCRETE FLOOR. ALL REINFORCEMENT BARS SHALL BE LAPPED 20 DIAMETERS UNLESS OTHERWISE SHOWN. ALL STRUCTURAL STEEL SHALL CONFORM TO A.S.T.M. A36 EXCEPT AS OTHERWISE NOTED. THE SHOP CONNECTIONS FOR STRUCTURAL STEEL SHALL BE WELDED. WELDING SHALL BE IN ACCORDANCE WITH CURRENT SPECIFICATIONS FOR WELDED HIGHWAY AND RAILWAY BRIDGES OF THE AMERICAN WELDING SOCIETY AND AS NOTED ON THE PLANS AND IN THE SPECIAL PROVISIONS. ALL FIELD CONNECTIONS SHALL BE MADE WITH HIGH STRENGTH BOLTS EXCEPT AS OTHERWISE NOTED. ALL BOLTS SHALL BE 3/4" DIAMETER IN 1 1/16" HOLES EXCEPT IN GIRDER FLANGE SPLICES WHICH SHALL BE 7/8" DIAMETER IN 1 1/16" HOLES. HOLES FOR SPLICES IN GIRDERS AND SPLICE PLATES SHALL BE PUNCHED 1 1/16" DIAMETER AND REAMED TO CORRECT SIZE WITH GIRDERS ASSEMBLED FULL LENGTH IN THE SHOP IN PROPER POSITION. ASSEMBLY OF GIRDERS SHALL BE WITH OR WITHOUT CROSSFRAMES. LEAVE ASSEMBLED FOR INSPECTION. ALL ROCKERS, BOLSTERS, PINTLES, BEARING PLATES, LEAD PLATES AND ANCHOR BOLTS SHALL BE FABRICATED AND SET IN ACCORDANCE WITH ARTICLE 51.15 OF THE STANDARD SPECIFICATIONS AND ARE INCLUDED IN THE QUANTITY OF STRUCTURAL STEEL. ESTIMATED WEIGHT 5,180 POUNDS. ROADWAY EXPANSION ANGLES SHALL BE FABRICATED AND BRECTED IN ACCORDANCE WITH ARTICLE 51.13(G) OF THE STANDARD SPECIFICATIONS AND ARE INCLUDED IN THE QUANTITY OF STRUCTURAL STEEL. ESTIMATED WEIGHT 2,790 POUNDS. ANCHOR BOLTS SHALL BE SET BEFORE BOLTING CROSSFRAMES OVER THE PIER AND ABUTMENTS. STRUCTURAL STEEL SHALL RECEIVE ONE SHOP COAT OF RED LEAD PAINT AND TWO FIELD COATS OF ALUMINUM PAINT EXCEPT AS OTHERWISE SPECIFIED. ALL PAINT SHALL BE FURNISHED AND APPLIED BY THE CONTRACTOR. SEE ARTICLES 56.1 TO 56.5 INCLUSIVE OF THE STANDARD SPECIFICATIONS AND THE SPECIAL PROVISIONS. THE EXPOSED SURFACES OF THE EXPANSION ANGLES SHALL BE GIVEN TWO SHOP COATS OF RED LEAD PAINT. ANCHOR STUDS SHALL NOT BE PAINTED. SHOP INSPECTION OF STRUCTURAL STEEL AND RADIOGRAPHIC INSPECTION OF WELDS SHALL BE BY ILLINOIS DIVISION OF HIGHWAYS BEFORE PAINTING. STUD SHEAR CONNECTORS ON THE BEAM FLANGES SHALL BE PLACED IN THE FIELD AFTER THE STEEL HAS BEEN ERECTED AND THE DICK FORMS ARE IN PLACE. FLANGE SHEAR CONNECTORS ARE INCLUDED IN THE QUANTITY OF STRUCTURAL STEEL. NUMBER REQUIRED - 2,400. ESTIMATED WEIGHT - 4,940 POUNDS. FIELD WELDING OF CONSTRUCTION ACCESSORIES TO THE BOTTOM FLANGES OR FOR A DISTANCE OF 1/4 OF THE SPAN EACH WAY FROM THE PIER ON THE TOP FLANGES OF GIRDERS WILL NOT BE PERMITTED. FIELD WELDING IN OTHER AREAS WILL BE PERMITTED ONLY WHEN APPROVED BY THE ENGINEER. THE CONTRACTOR SHALL DRIVE ONE CONCRETE TEST PILE IN A PERMANENT LOCATION AT THE NORTH AND SOUTH ABUTMENTS AS DIRECTED BY THE ENGINEER BEFORE ORDERING THE REMAINDER OF THE CONCRETE PILES. THE CONTRACTOR SHALL DRIVE ONE TIMBER TEST PILE IN THE VICINITY OF THE PIER AS DIRECTED BY THE ENGINEER BEFORE ORDERING THE REMAINDER OF THE TIMBER PILES. STANDARD SPECIFICATIONS FOR ROAD AND BRIDGE CONSTRUCTION ADOPTED BY THE DEPARTMENT OF PUBLIC WORKS AND BUILDINGS, JANUARY 2, 1958 SHALL APPLY. THE SUPPLEMENTAL SPECIFICATIONS EFFECTIVE JANUARY 3, 1965 ALSO APPLY TO THIS WORK.



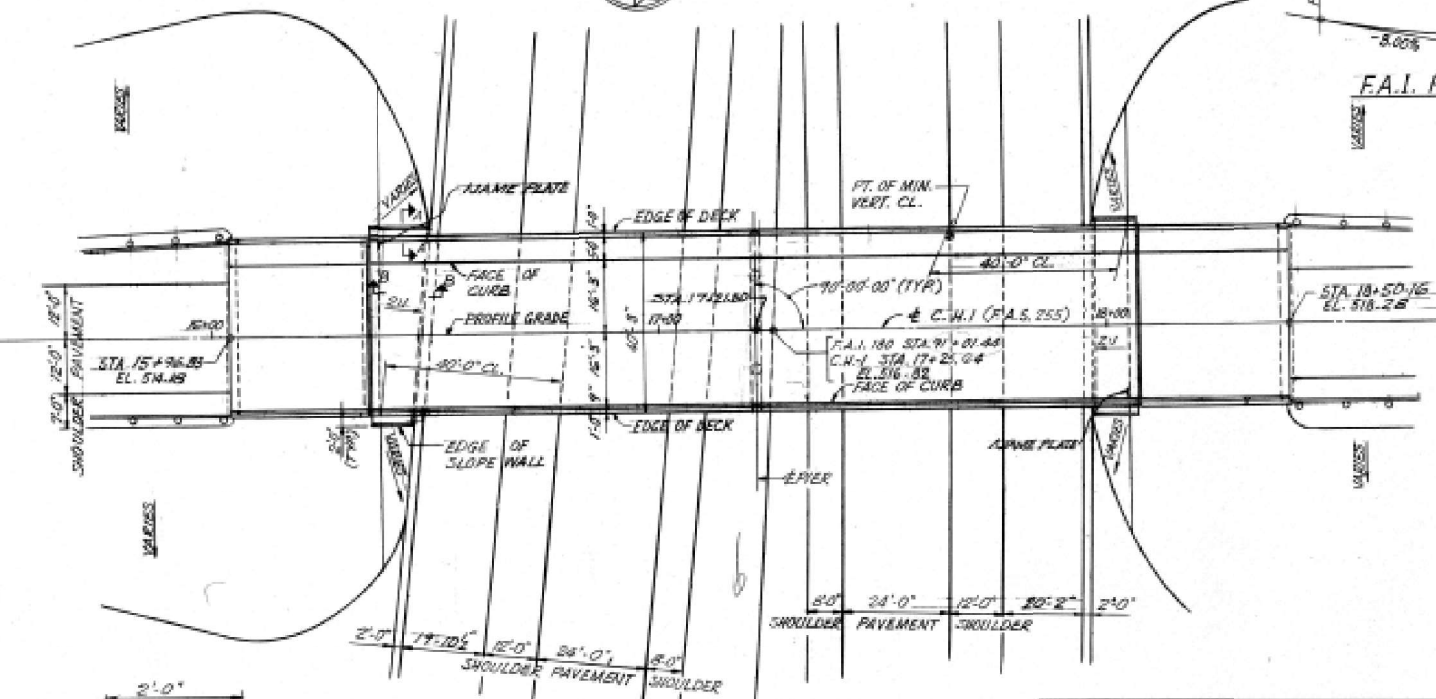
ELEVATION  
SCALE: 1" = 20'-0"



APPROVED  
FOR STRUCTURAL ADEQUACY ONLY  
10-14-67  
Engineer of Bridges & Traffic Structures

DESIGN DATA

HIGHWAY CLASSIFICATION	CLASS = ROAD	DESIGN SPEED ( )	30
DESIGN LOAD	L.L. = HS20-44	FUTURE D.L.	2" BITUMINOUS WEARING SURFACE



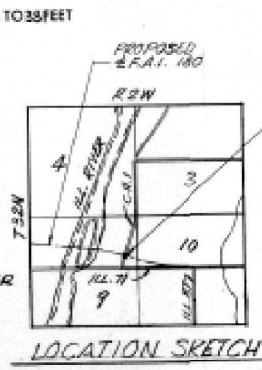
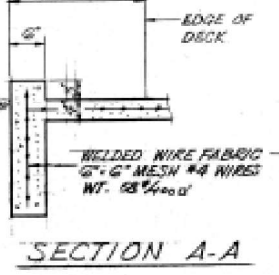
BILL OF MATERIAL SECTION 78-1HB

TOTAL	SUPER	SUB	UNIT	PAY ITEM
0.5		0.5	LUMP SUM	BRIDGE DECK SEALANT
269		269	CU. YD.	CLASS A EXCAVATION FOR STRUCTURES
1,238	1,238		SQ. FT.	PRECAST PRESTRESSED CONCRETE BRIDGE DECK 27"
639.9	343.2	296.7	CU. YD.	CLASS X CONCRETE
1,241	1,241		SQ. YD.	PROTECTIVE COAT
190,600	190,600		LB.	FURNISHING & ERECTING STRUCTURAL STEEL
116,270	84,580	31,690	LB.	REINFORCEMENT BARS
750		750	LIN. FT.	FURNISHING CREOSOTED PILES 20 L TO 38 FEET
1		1	EACH	TEST PILE TIMBER
750		750	LIN. FT.	DRIVING TIMBER PILES
1,140		1,140	LIN. FT.	DRIVING CONCRETE PILES
1,140		1,140	LIN. FT.	FURNISHING CONCRETE PILES
2		2	EACH	TEST PILES CONCRETE
2		2	EACH	NAME PLATES
140		140	SQ. YD.	SLOPEWALL 4 INCH
65		65	LIN. FT.	PREFORMED JOINT SEALER
462	462		LIN. FT.	ALUMINUM HANDRAIL, TYPE L
462	462		LIN. FT.	METAL HANDRAIL, TYPE M

DESIGN STRESSES

CONCRETE (CAST-IN-PLACE)	$f_c = 3,900$ P.S.I.
	$f_t = 1,400$ P.S.I.
	$f_c = 1,000$ P.S.I. (WITH EARTH PRESSURE)
	$v = 75$ P.S.I. (FOOTINGS)
	$n = 10$
PRECAST PRESTRESSED UNITS	$f_c = 5,000$ P.S.I.
	$f_{ci} = 4,000$ P.S.I.
	$f_s = 248,000$ P.S.I. (7/16" DIA. STRANDS)
	$f_t = 173,600$ P.S.I. (7/16" DIA. STRANDS)
REINFORCING STEEL	$f_s = 20,000$ P.S.I.
STRUCTURAL STEEL	$f_s = 20,000$ P.S.I.
FILE LOADS	$P = 24$ TONS (TIMBER)
	$P = 35$ TONS (CONCRETE)
MAX. L.L. DEFLECTION	L/1200 (COMPOSITE)

STATION 91+01.44  
BUILT 196 BY  
STATE OF ILLINOIS  
F.A.I. RT. 180 SEC. 78-1HB  
F.A. PROJ. 1-180-7(9)  
LOADING HS20&ALT.  
(SEE STATE OF ILLINOIS STD. 2113-1)  
LETTERING FOR NAMEPLATE



GENERAL PLAN AND ELEVATION  
COUNTY HWY. ROUTE 1 OVER  
F.A.I. ROUTE 180  
F.A. PROJECT 1-180-7(9)9  
SECTION 78-1HB  
PUTNAM COUNTY  
STATION 91+01.44

ALFRED BENECH & COMPANY CONSULTING ENGINEERS  
CHICAGO, ILLINOIS

FOR INFORMATION ONLY

MODEL: Defaul FILE NAME: putnam.ctb PLOT DATE: 3/17/2022 OPERATIONS\woodshank\LINEAR DELINEATOR FOR TEMPORARY CONCRETE BARRIER.dwg

USER NAME = woodshank	DESIGNED - RW	REVISED -
PLOT SCALE = 100,0000' / in.	DRAWN - RW	REVISED -
PLOT DATE = 3/17/2022	CHECKED - YP	REVISED -
	DATE - 2/5/2022	REVISED -

STATE OF ILLINOIS  
DEPARTMENT OF TRANSPORTATION

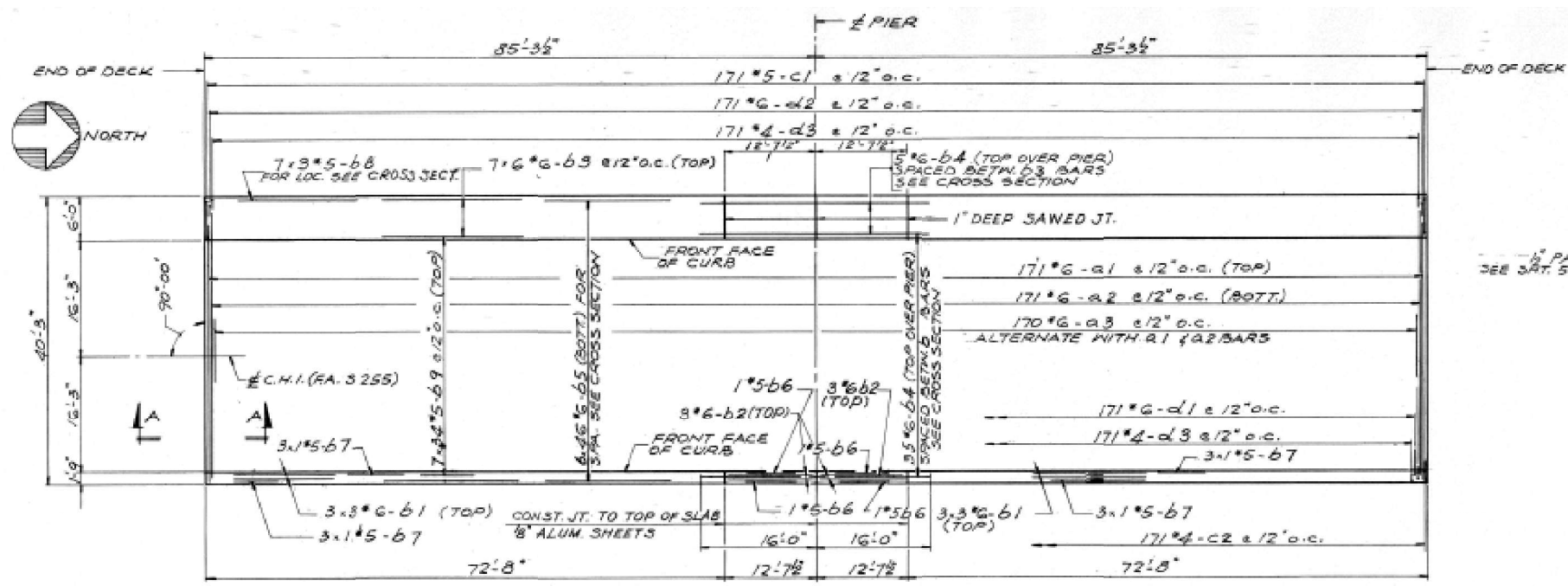
EXISTING STRUCTURE PLANS  
FOR STRUCTURE NO. 078-0022

SCALE: SHEET 1 OF 4 SHEETS STA. TO STA.

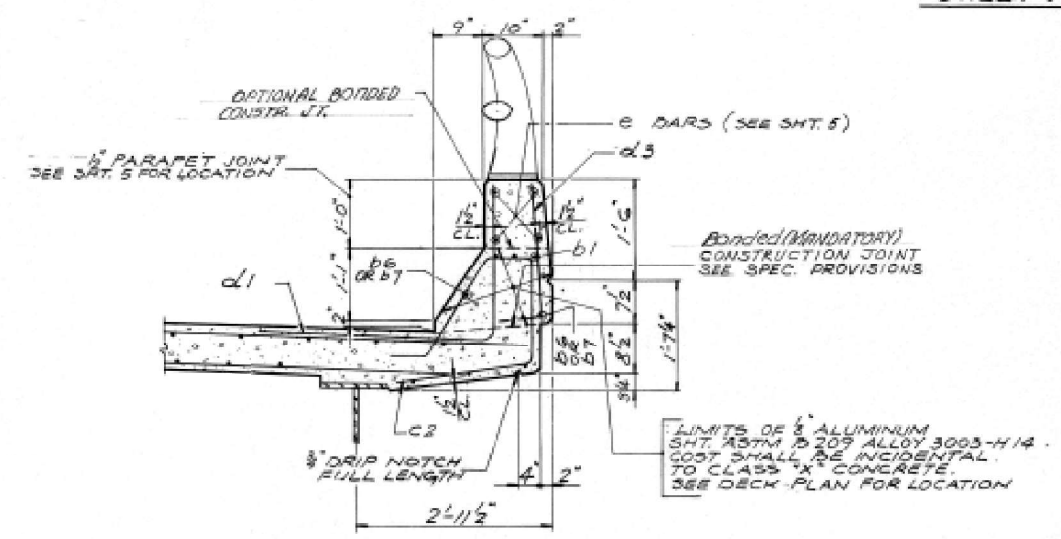
F.A.I. RTE.	SECTION	COUNTY	TOTAL SHEETS	SHEET NO.
180	(78-1HB)BP	PUTNAM	13	10
CONTRACT NO. 66M13				
ILLINOIS FED. AID PROJECT				

F.A.I. 180	78-1HB	PUTNAM	161	51
STA. TO STA.			SHEETS	
P. & R. NO. 4			BLINDS	PROJECT

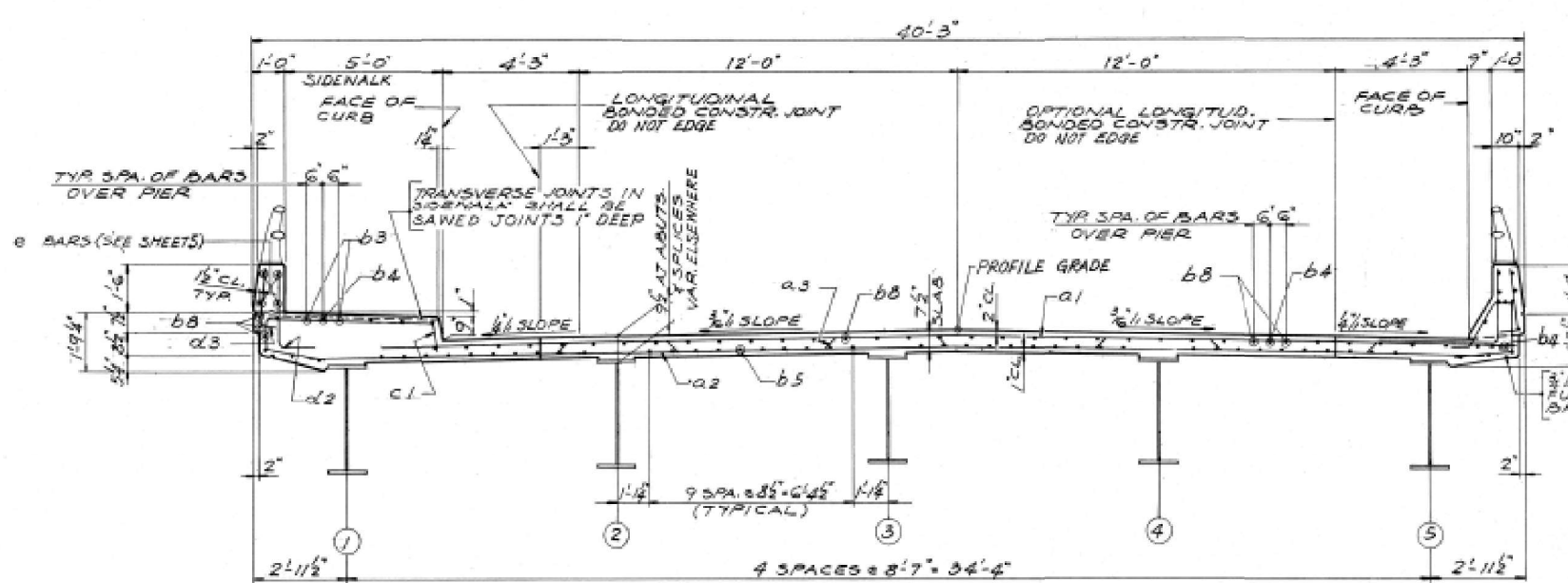
SHEET 3 OF 15



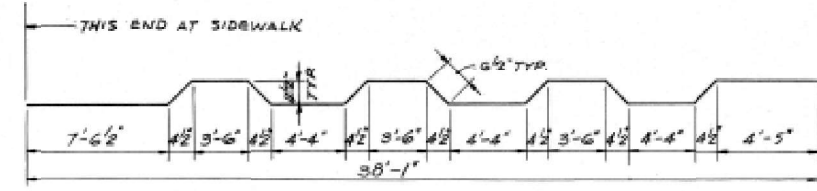
PLAN OF DECK REINFORCEMENT  
SCALE: 3/8" = 1'-0"



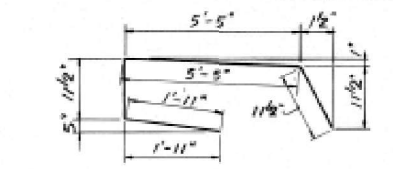
CURB SECTION  
SCALE: 3/8" = 1'-0"



CROSS SECTION  
SCALE: 3/8" = 1'-0"



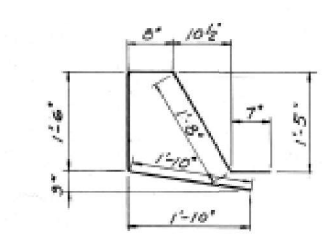
BAR 'Q3'



BAR C1



BARS d1, d2 & d3



BAR C2

BILL OF MATERIAL

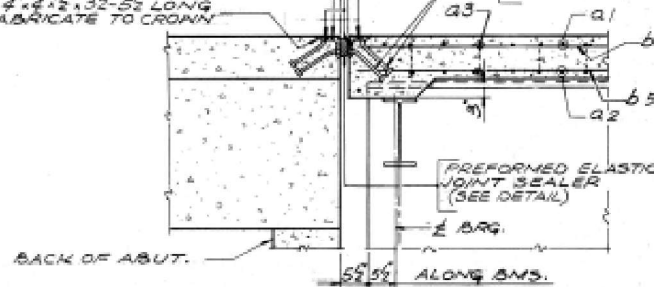
BAR NO.	SIZE	LENGTH	SHAPE
Q1	171 #6	36'-0"	
Q2	171 #6	36'-6"	
Q3	170 #6	39'-3"	
b1	18 #6	25'-3"	
b2	6 #6	12'-3"	
b3	42 #6	29'-9"	
b4	40 #6	32'-0"	
b5	276 #6	29'-6"	
d1	171 #6	5'-6"	
d2	171 #6	3'-4"	
b6	4 #5	12'-3"	
b7	12 #5	25'-0"	
b8	259 #5	25'-6"	
c1	171 #5	9'-3"	
c2	171 #4	6'-3"	
d3	342 #4	2'-6"	
CLASS X CONCRETE CUYD6		2M.8	
REINFORCEMENT BARS		LBS. 5792	
STRUCTURAL STEEL		LBS. 190.60	

NOTES!  
ALL BAR DIMENSIONS ARE OUT TO OUT.

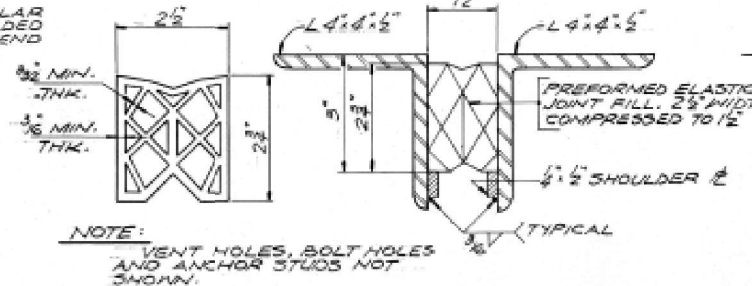
3/4" HOLES AT 12" CTRS. FOR 3/8" BOLTS SET ON 25" GAGE LINE. ALL BOLTS SHALL BE BURNED, GALVANIZED OR CLIPPED OFF FLUSH WITH BACK OF LB AFTER FORMS ARE REMOVED.

1/4" VENT HOLES AT 12" CENTERS SET ON 15" GAGE LINE

3/4" x 8" CR. 1020 57L GRANULAR OR SOLID FLUX FILLED HEADED STUDS AUTOMATICALLY END WELDED. (ALT. AT 1'-0")



SECTION A-A  
SCALE: 3/8" = 1'-0"



DETAIL OF PREFORMED ELASTIC JOINT SEALER

APPROVED  
FOR STRUCTURAL ADEQUACY ONLY  
10-16-67  
Engineer of Bridge & Traffic Structures

DECK PLAN  
COUNTY HWY. ROUTE 1 OVER  
F.A.I. ROUTE 180  
P.A. PROJECT 1-180-7(9)9  
SECTION 78-1HB  
PUTNAM COUNTY  
STATION 91+01.44

ALFRED BERESCH & COMPANY CONSULTING ENGINEERS  
10 SOUTH WABASH AVENUE CHICAGO, ILLINOIS

FOR INFORMATION ONLY

USER NAME = woodstank1	DESIGNED - RW	REVISED -
PLOT SCALE = 100,0000' / 1 in.	DRAWN - RW	REVISED -
PLOT DATE = 3/17/2022	CHECKED - YP	REVISED -
	DATE - 2/5/2022	REVISED -

STATE OF ILLINOIS  
DEPARTMENT OF TRANSPORTATION

EXISTING STRUCTURE PLANS  
FOR STRUCTURE NO. 078-0022

SCALE: SHEET 2 OF 4 SHEETS STA. TO STA.

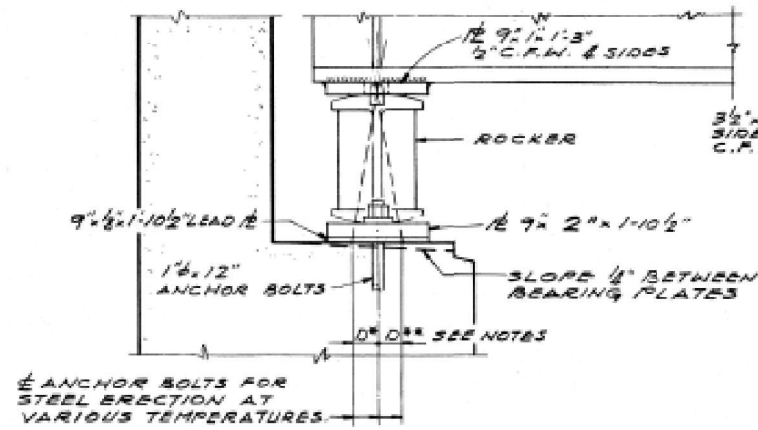
F.A.I. RTE.	SECTION	COUNTY	TOTAL SHEETS	SHEET NO.
180	(78-1HB)BP	PUTNAM	13	11
				CONTRACT NO. 66M13
ILLINOIS FED. AID PROJECT				

MODEL: Default  
 FILE NAME: p:\project-pw-bentley.com\p\110101\documents\110101\office\dr\dr\3\micelb\micelb3.dwg  
 OPERATIONS\WOODSTANK\LINEAR DELINEATOR FOR TEMPORARY CONCRETE BARRIER.DGN

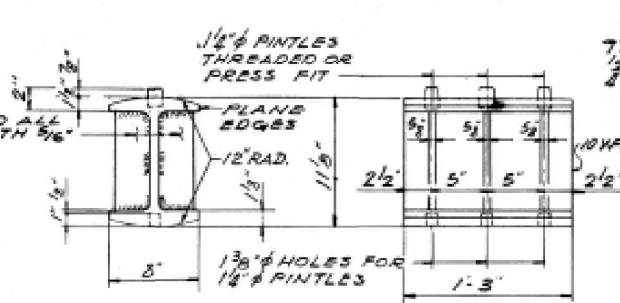




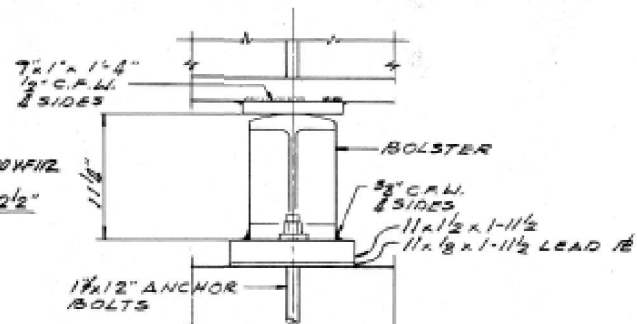
FA-180	78-1HB	PUTNAM	167	59
STA.	TO STA.		PROJECT	
S.P.R. NO. 4		LENGTH		



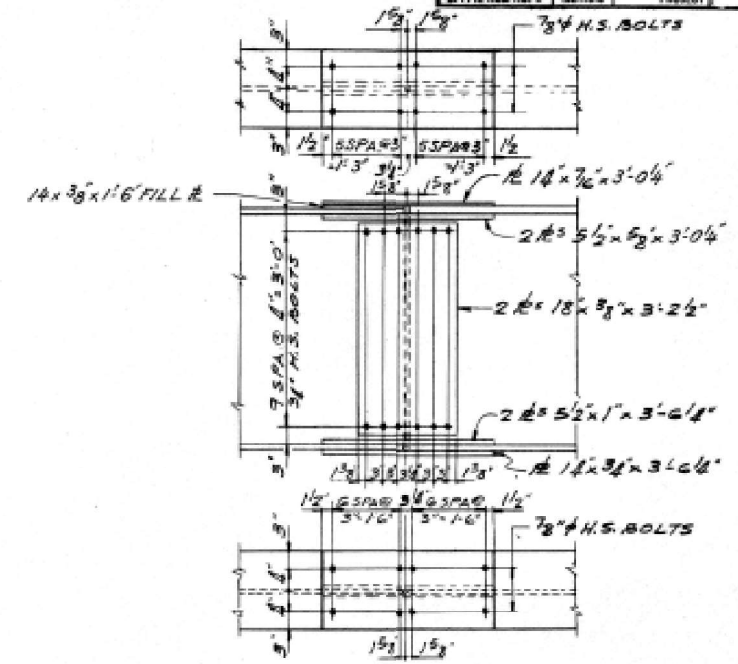
SECTION



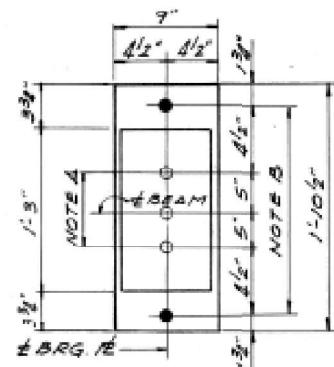
ROCKER



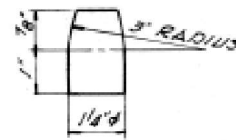
ELEVATION



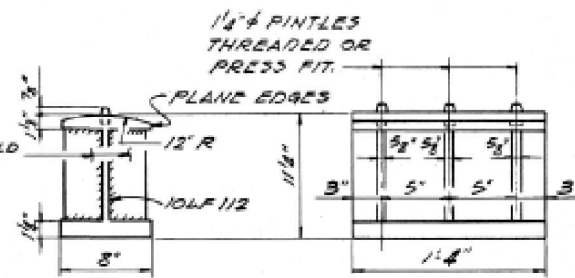
SPlice DETAIL  
SCALE: 3/8\"/>



PLAN AT ABUTMENT

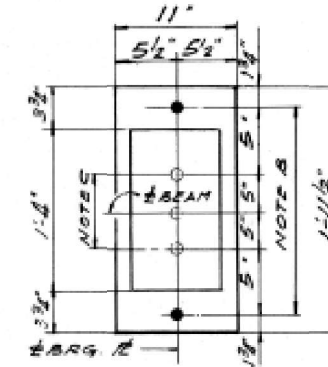


PINTLE



BOLSTER

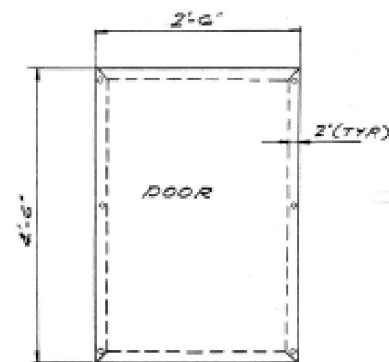
BEARING ASSEMBLY DETAIL



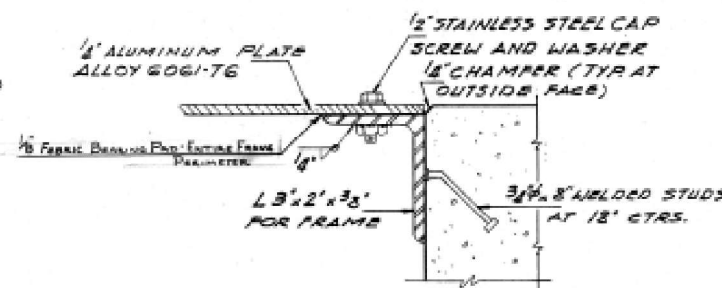
PLAN AT PIER

NOTES ON SETTING OF ANCHOR BOLTS AT EXPANSION BEARINGS

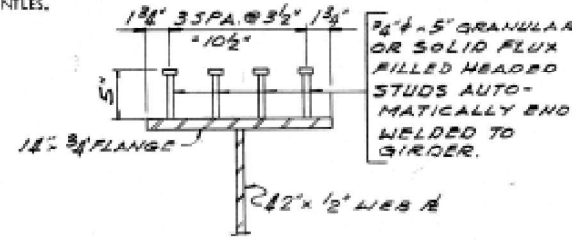
- a) D\* (SIDE OF BEARING AWAY FROM FIXED BEARING)  
D\* = 1/8" PER EACH 100' OF EXPANSION FOR EVERY 15° FALL BELOW THE NORMAL TEMP. OF 50° F.
- b) D\*\* (SIDE OF BEARING TOWARD FIXED BEARING)  
D\*\* = 1/8" PER EACH 100' OF EXPANSION FOR EVERY 15° RISE ABOVE THE NORMAL TEMP. OF 50° F.
- c) AFTER BEAMS HAVE BEEN ERCTED AND DIMENSIONS D\* OR D\*\* DETERMINED, HOLES SHALL BE DRILLED AND ANCHOR BOLTS SHALL BE GROUTED IN PLACE. ALL FIXED ANCHOR BOLTS MAY BE BUILT INTO THE MASONRY.



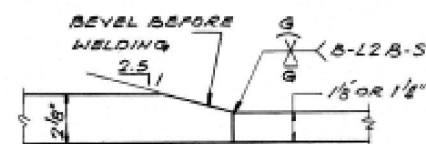
DOOR ELEVATION  
(COST OF DOOR AND FRAME INCIDENTAL) 2 REQUIRED



SECTION THRU DOOR FRAME



SECTION



SHOP FLANGE SPlice

APPROVED  
FOR STRUCTURAL ADEQUACY ONLY  
*Carl Thompson* 10-16-07  
Engineer of Bridge & Traffic Structures

STEEL DETAILS  
COUNTY HWY. ROUTE 10 OVER  
F.A.I. ROUTE 180  
F.A.I. PROJECT 1-180-7(9)g  
SECTION 78-1HB  
PUTNAM COUNTY  
STATION 91+01.44

ALFRED BENESCH & COMPANY CONSULTING ENGINEERS  
140 EAST WABASH CHICAGO, ILLINOIS

FOR INFORMATION ONLY

MODEL Default  
 FILE NAME: p:\project\new\beam\p\p\DOT\Documents\DOT Office\Drawings\3\Misc\beam\LINEAR DELINEATOR FOR TEMPORARY CONCRETE BARRIER.dwg  
 OPERATIONS\woodshank\LINEAR DELINEATOR FOR TEMPORARY CONCRETE BARRIER.dwg

USER NAME = woodshank	DESIGNED - RW	REVISED -
PLOT SCALE = 100,0000' / in.	DRAWN - RW	REVISED -
PLOT DATE = 3/17/2022	CHECKED - YP	REVISED -
	DATE - 2/5/2022	REVISED -

STATE OF ILLINOIS  
DEPARTMENT OF TRANSPORTATION

EXISTING STRUCTURE PLANS  
FOR STRUCTURE NO. 078-0022

SCALE: SHEET 4 OF 4 SHEETS STA. TO STA.

F.A.I. RTE.	SECTION	COUNTY	TOTAL SHEETS	SHEET NO.
180	(78-1HB)BP	POTNAM	13	13
			CONTRACT NO. 66M13	
ILLINOIS FED. AID PROJECT				