

STATE OF ILLINOIS
DEPARTMENT OF TRANSPORTATION

F.A. RTE.	SECTION	COUNTY	TOTAL SHEETS	SHEET NO.
VAR	(101, 39, 39C) SFY	KANKAKEE	10	1
		ILLINOIS	CONTRACT NO. 66M17	

INDEX OF SHEETS

- 1 COVER SHEET
- 2 GENERAL NOTES
- 3-4 SUMMARY OF QUANTITIES
- 5-6 TYPICAL SECTIONS
- 7-8 SCHEDULES
- 9-10 DETAILS

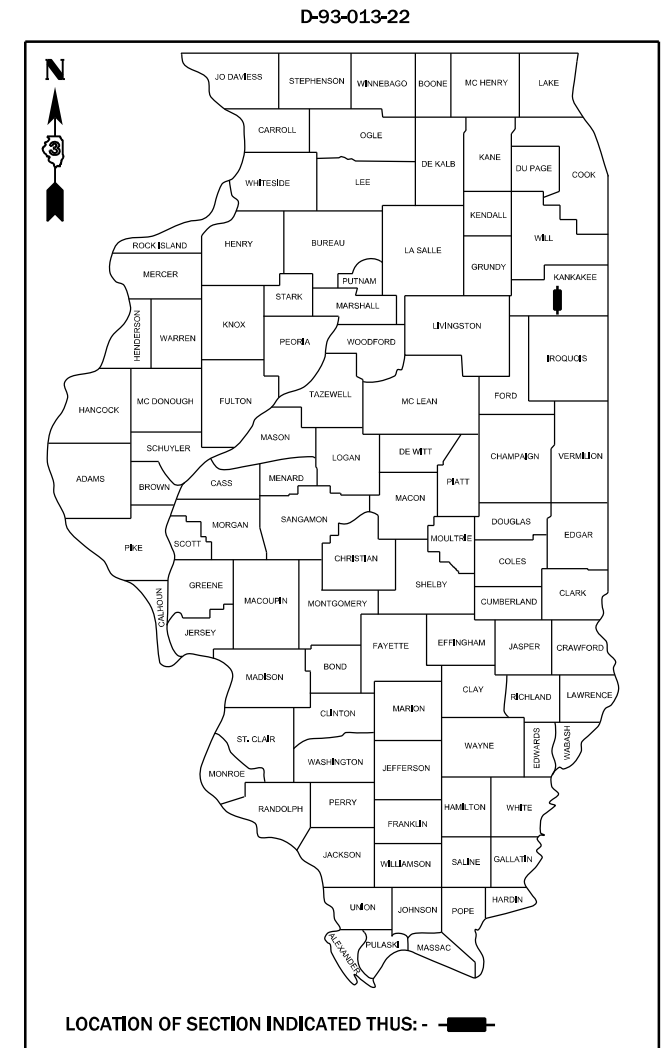
HIGHWAY STANDARDS

- 000001-08 STANDARD SYMBOLS, ABBREVIATIONS AND PATTERNS
- 001006 DECIMAL OF AN INCH AND OF A FOOT
- 406201-01 MAILBOX TURNOUT
- 482001-02 HMA SHOULDER ADJACENT TO FLEXIBLE PAVEMENT
- 482006-03 HMA SHOULDER ADJACENT TO RIGID PAVEMENT
- 642006-01 SHOULDER RUMBLE STRIPS, 8 INCH
- 701006-05 OFF-ROAD OPERATIONS 2L, 2W, 15' (4.5 m) TO 24" (600 mm) FROM PAVEMENT EDGE
- 701311-03 LANE CLOSURE, 2L, 2W, MOVING OPERATIONS - DAY ONLY
- 701326-04 LANE CLOSURE, 2L, 2W, PAVEMENT WIDENING, FOR SPEEDS ≥ 45 MPH
- 701901-08 TRAFFIC CONTROL DEVICES

**PROPOSED
HIGHWAY PLANS**

**FAU ROUTE 6188 & FAS ROUTE 1323 (IL 115)
SECTION (101, 39, 39C) SFY
PROJECT: HSIP - 9V30 (398)
SHOULDER WIDENING AND RUMBLE STRIPS
KANKAKEE COUNTY**

C-93-033-22



IL 115 - MINOR ARTERIAL/MAJOR COLLECTOR
2019 ADT = 2550
P.V. = 95.3% S.U. = 2.7% M.U. = 2.0%

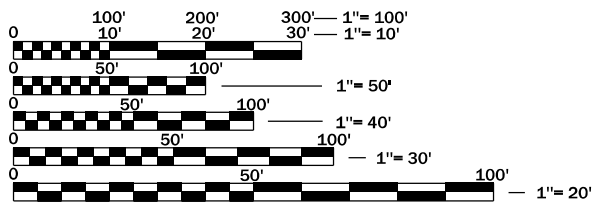
STATE OF ILLINOIS
DEPARTMENT OF TRANSPORTATION

SUBMITTED March 21, 2022

[Signature] REGIONAL ENGINEER
May 13, 2022

[Signature] ENGINEER OF DESIGN AND ENVIRONMENT
May 13, 2022

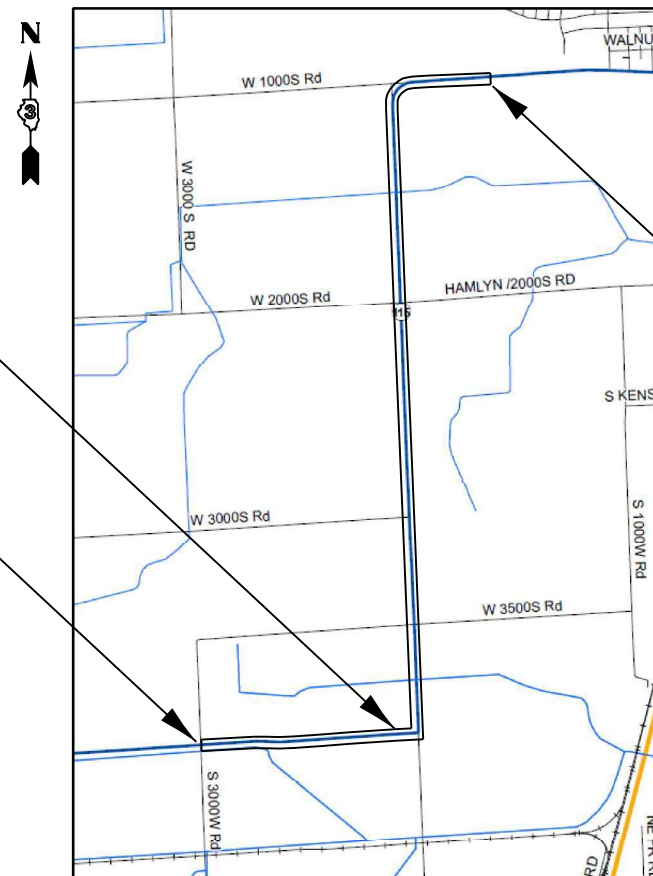
[Signature] DIRECTOR OF HIGHWAYS PROJECT IMPLEMENTATION



FULL SIZE PLANS HAVE BEEN PREPARED USING STANDARD ENGINEERING SCALES. REDUCED SIZED PLANS WILL NOT CONFORM TO STANDARD SCALES. IN MAKING MEASUREMENTS ON REDUCED PLANS, THE ABOVE SCALES MAY BE USED.

J.U.L.I.E.
JOINT UTILITY LOCATION INFORMATION FOR EXCAVATION
1-800-892-0123
OR 811

PROJECT ENGINEER: JOE KANNEL, P.E.
UNIT CHIEF: MARC BUDZYNSKI, P.E.
DISTRICT 3 NO. (815) 434-6131
CONTRACT NO. 66M17



STATION EQUATION
STA 0+00 BK = STA 181+45 AH
STA'S INCREASE TO THE WEST
AND EAST/NORTH FROM EQN

PROJECT BEGINS
JUST EAST OF S 3000W RD
STA 50+28

PROJECT ENDS
STA 369+36

GROSS LENGTH = 23,819 FT. = 4.51 MILES
NET LENGTH = 22,833 FT. = 4.32 MILES

**PRINTED BY THE AUTHORITY
OF THE STATE OF ILLINOIS**

GENERAL NOTES

THE HMA SURFACE OF ALL MAILBOX TURNOUTS, PRIVATE ENTRANCES, COMMERCIAL ENTRANCES, AND SIDE ROADS SHALL BE MADE NEATLY, IN A WORKMANLIKE MANNER, AND SHALL ACCURATELY CONFORM TO THE SHAPES AND DIMENSIONS SHOWN ON THE PLAN DETAILS. IF REQUIRED BY THE ENGINEER, THE CONTRACTOR SHALL SAW CUT THE HMA SURFACE TO CONFORM TO THE SHAPES AND DIMENSIONS SHOWN ON THE PLAN DETAILS. THIS WORK WILL BE INCLUDED IN THE COST OF THE HMA SURFACE.

ABANDONED UNDERGROUND UTILITIES THAT CONFLICT WITH CONSTRUCTION SHALL BE DISPOSED OF OUTSIDE THE LIMITS OF THE RIGHT OF WAY ACCORDING TO ARTICLE 202.03 OF THE STANDARD SPECIFICATIONS AND AS DIRECTED BY THE ENGINEER. THIS WORK WILL NOT BE PAID FOR SEPARATELY, BUT WILL BE INCLUDED IN THE COST OF EARTH EXCAVATION.

THE FOLLOWING RATES OF APPLICATION HAVE BEEN USED IN CALCULATING PLAN QUANTITIES:

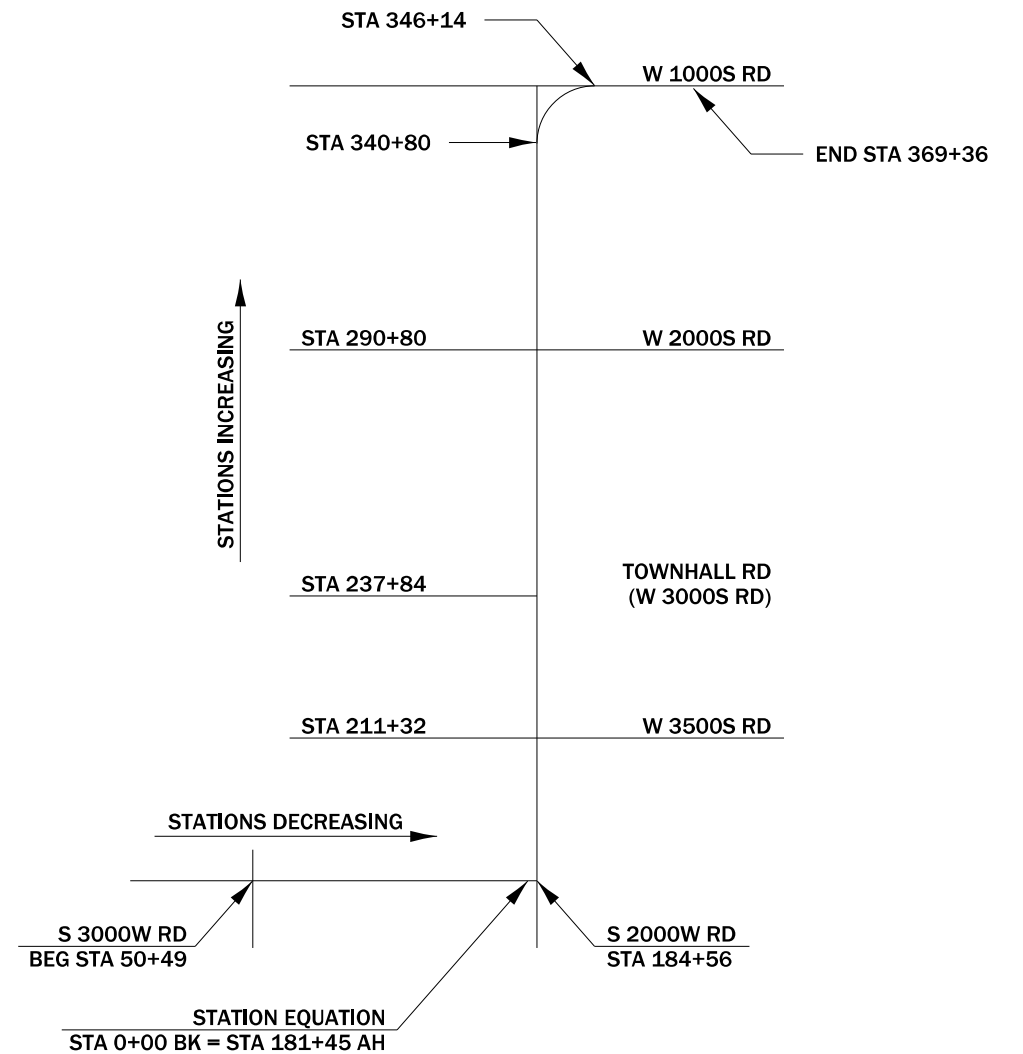
HMA RESURFACING	112	LBS / SQ YD / IN
-----------------	-----	------------------

ALL DAMAGE TO DEPARTMENT OWNED UNDERGROUND FACILITIES, CAUSED BY THE CONTRACTOR SHALL BE REPAIRED TO THE SATISFACTION OF THE DEPARTMENT AT THE CONTRACTOR'S EXPENSE. THIS SHALL INCLUDE ALL TEMPORARY REPAIRS REQUIRED TO KEEP THE FACILITY OPERATIONAL WHILE MATERIAL IS BEING OBTAINED TO MAKE PERMANENT REPAIRS. SPLICING OF ELECTRIC CABLE WILL NOT BE ALLOWED. ELECTRIC CABLE SHALL BE REPLACED FROM POLE TO POLE OR CONTROLLER.

THE CONTRACTOR SHALL CONTACT JULIE AT LEAST 48 HOURS PRIOR TO EXCAVATION TO DETERMINE WHICH UTILITIES ARE IN THE AREA.

COMMITMENTS:

PROJECT STATIONING



HMA MIXTURE REQUIREMENT TABLE		
LOCATION(S) :	ENTIRE PROJECT	ENTIRE PROJECT
MIXTURE USE(S) :	SHOULDER	SHOULDER
	BOTTOM LIFT(S)	TOP LIFT (2")
BINDER GRADE (PG) :	PG 64-22	PG 64-22
DESIGN AIR VOIDS :	4.0% @ N50	4.0% @ N50
MIXTURE COMPOSITION : (MIXTURE GRADATION)	1L-19.0	1L-9.5 FG
FRICTION AGGREGATE :	-	-
MIXTURE WEIGHT :	112.0 LB/SY/IN	112.0 LB/SY/IN
QUALITY MANAGEMENT PROGRAM :	QC/QA	QC/QA
SUBLOT SIZE :	N/A	N/A
DENSITY TEST METHOD :	CORES	CORES
MATERIAL TRANSFER DEVICE (REQUIRED?) :	NO	NO

STATE OF ILLINOIS
DEPARTMENT OF TRANSPORTATION
DISTRICT THREE
AS BUILT INFORMATION

STATE OF ILLINOIS
DEPARTMENT OF TRANSPORTATION
DISTRICT THREE

SUPERVISING CONSTRUCTION FIELD ENGINEER

PREPARED BY: _____
DISTRICT STUDIES & PLANS ENGINEER

RESIDENT ENGINEER / TECHNICIAN

DATE: _____

START & END DATES
OF CONSTRUCTION:

EXAMINED BY: _____
DISTRICT CONSTRUCTION ENGINEER

INSPECTORS: _____

DISTRICT MATERIALS ENGINEER

DISTRICT OPERATIONS ENGINEER

**STATE OF ILLINOIS
DEPARTMENT OF TRANSPORTATION**

GENERAL NOTES

SCALE: SHEET OF SHEETS STA. TO STA.

F.A. RTE.	SECTION	COUNTY	TOTAL SHEETS	SHEET NO.
	(101, 39, 39C) SFY	KANKAKEE	10	2
CONTRACT NO. 66M17				
ILLINOIS FED. AID PROJECT				

MODEL: M00DEFMAM17S
FILE: M00DEFMAM17S.dwg
C:\Users\budzynskim\OneDrive\Documents\66M17.dwg

CODE NO.	ITEM	UNIT	TOTAL QUANTITY	CONSTRUCTION CODE	
				90% FED 10% STATE	90% FED 10% STATE
				SAFETY 0021 RURAL	SAFETY 0021 URBAN
40600290	BITUMINOUS MATERIALS (TACK COAT)	POUND	8640	2086	6554
40800050	INCIDENTAL HOT-MIX ASPHALT SURFACING	TON	8.2	0	8.2
44000157	HOT-MIX ASPHALT SURFACE REMOVAL, 2"	SQ YD	70.6	0	70.6
48203029	HOT-MIX ASPHALT SHOULDERS, 8"	SQ YD	19108	4633	14475
64200108	SHOULDER RUMBLE STRIPS, 8 INCH	FOOT	42557	10422	32135
* 66900200	NON-SPECIAL WASTE DISPOSAL	CU YD	100	0	100
* 66900530	SOIL DISPOSAL ANALYSIS	EACH	3	0	3
* 66901001	REGULATED SUBSTANCES PRE-CONSTRUCTION PLAN	L SUM	1	0	1
* 66901003	REGULATED SUBSTANCES FINAL CONSTRUCTION REPORT	L SUM	1	0	1
* 66901006	REGULATED SUBSTANCES MONITORING	CAL DA	2	0	2
67100100	MOBILIZATION	L SUM	1	0.25	0.75
70100500	TRAFFIC CONTROL AND PROTECTION, STANDARD 701326	L SUM	1	0.25	0.75
70103815	TRAFFIC CONTROL SURVEILLANCE	CAL DA	5	1.5	3.5
* 78001110	PAINT PAVEMENT MARKING - LINE 4"	FOOT	88344	20844	67500

*= SPECIALTY ITEM

MODEL: M00DEFM1M1ES
FILE: M1M1ES.dwg
C:\p1\work\666101\budzynskim\00750535\0366M17-2-1h-cover.dwg

USER NAME = budzynskim	DESIGNED -	REVISED -	STATE OF ILLINOIS DEPARTMENT OF TRANSPORTATION	SUMMARY OF QUANTITIES		F.A. RTE.	SECTION	COUNTY	TOTAL SHEETS	SHEET NO.
PLOT SCALE = 100.0000' / in.	DRAWN -	REVISED -				VAR	(101, 39, 39C) SFY	KANKAKEE	10	3
PLOT DATE = 3/28/2022	CHECKED -	REVISED -		SCALE:	SHEET OF SHEETS	STA. TO STA.	CONTRACT NO. 66M17			
DATE -	REVISED -	REVISED -		ILLINOIS FED. AID PROJECT						

CODE NO.	ITEM	UNIT	TOTAL QUANTITY	CONSTRUCTION CODE	
				90% FED 10% STATE	90% FED 10% STATE
				SAFETY	SAFETY
				0021	0021
				RURAL	URBAN
X0800001	SHOULDER REMOVAL (SPECIAL)	SQ YD	19108	4633	14475
Z0030850	TEMPORARY INFORMATION SIGNING	SQ FT	63	21	42

MODEL: \\MODELM\JM\FILES
 FILE: \\MODELM\csp\work\aid\6617\sh-cove.dgn

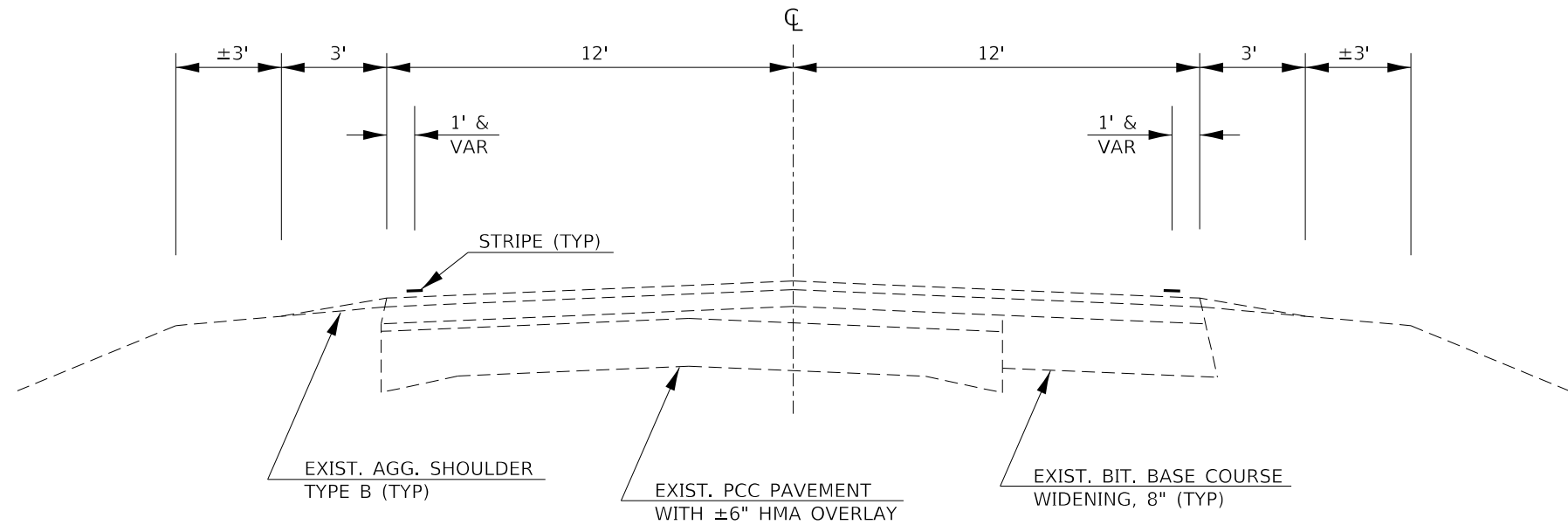
USER NAME = budzynskim	DESIGNED -	REVISED -
	DRAWN -	REVISED -
PLOT SCALE = 100,0000 ' / in.	CHECKED -	REVISED -
PLOT DATE = 3/28/2022	DATE -	REVISED -

**STATE OF ILLINOIS
DEPARTMENT OF TRANSPORTATION**

SUMMARY OF QUANTITIES

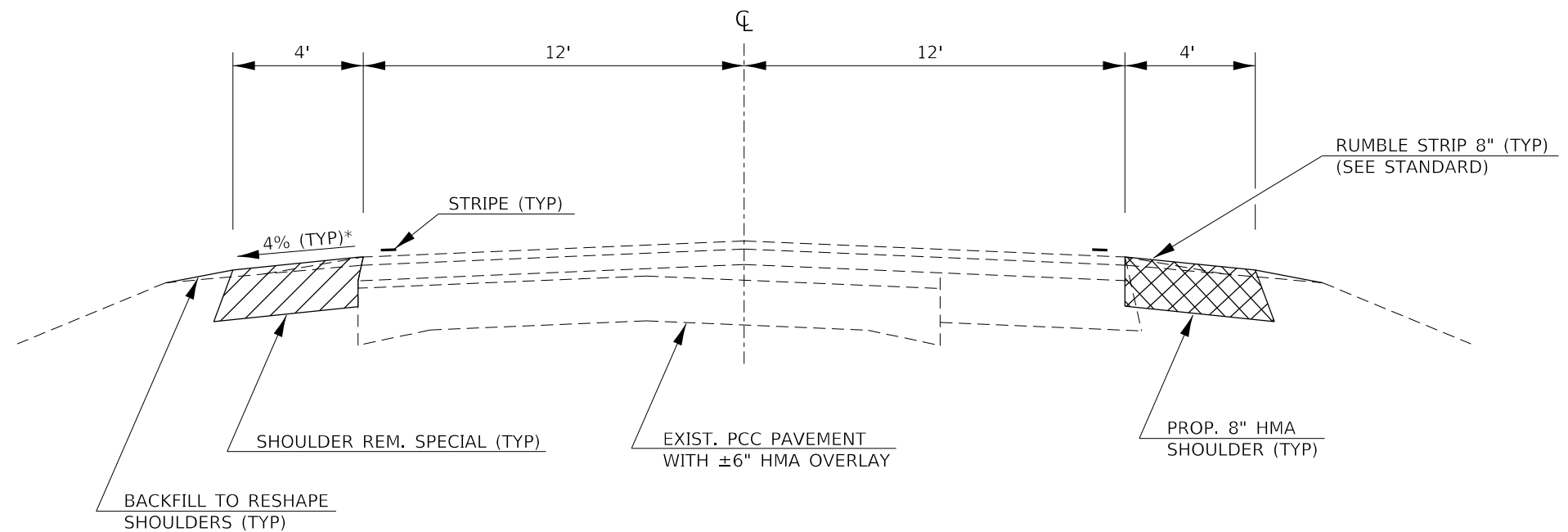
SCALE: SHEET OF SHEETS STA. TO STA.

F.A. RTE.	SECTION	COUNTY	TOTAL SHEETS	SHEET NO.
VAR	(101, 39, 39C) SFY	KANKAKEE	10	4
			CONTRACT NO. 66M17	
		ILLINOIS	FED. AID PROJECT	



EXISTING TYPICAL SECTION

STA 50+28 TO STA 0+00
 STA 0+00 BK = STA 181+45 AH
 STA 181+45 TO STA 337+00



PROPOSED TYPICAL SECTION

STA 50+28 TO STA 0+00
 STA 0+00 BK = STA 181+45 AH
 STA 181+45 TO STA 337+00

*REFER TO STANDARD 482001 IN AREAS OF SUPERELEVATION

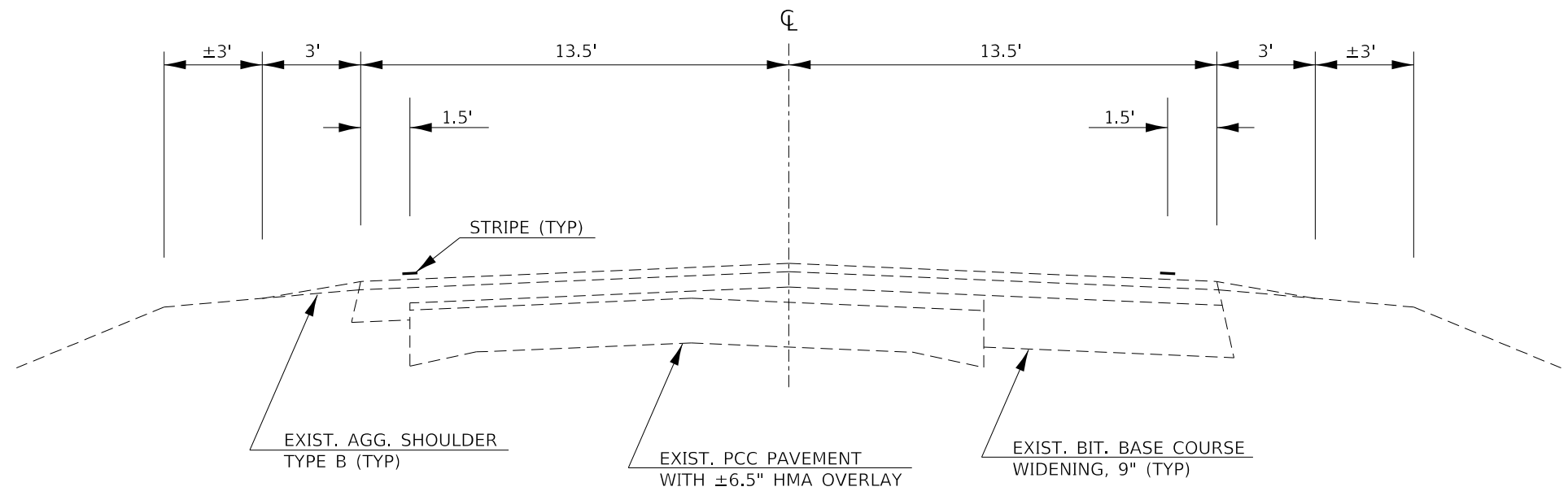
MODEL: \\MODELM\JM\FILES
 FILE: \\MODELM\JM\WORKSPACE\66M17\2-shr-cover.dgn

USER NAME = budzynskim	DESIGNED -	REVISED -
	DRAWN -	REVISED -
PLOT SCALE = 100,0000' / in.	CHECKED -	REVISED -
PLOT DATE = 3/21/2022	DATE -	REVISED -

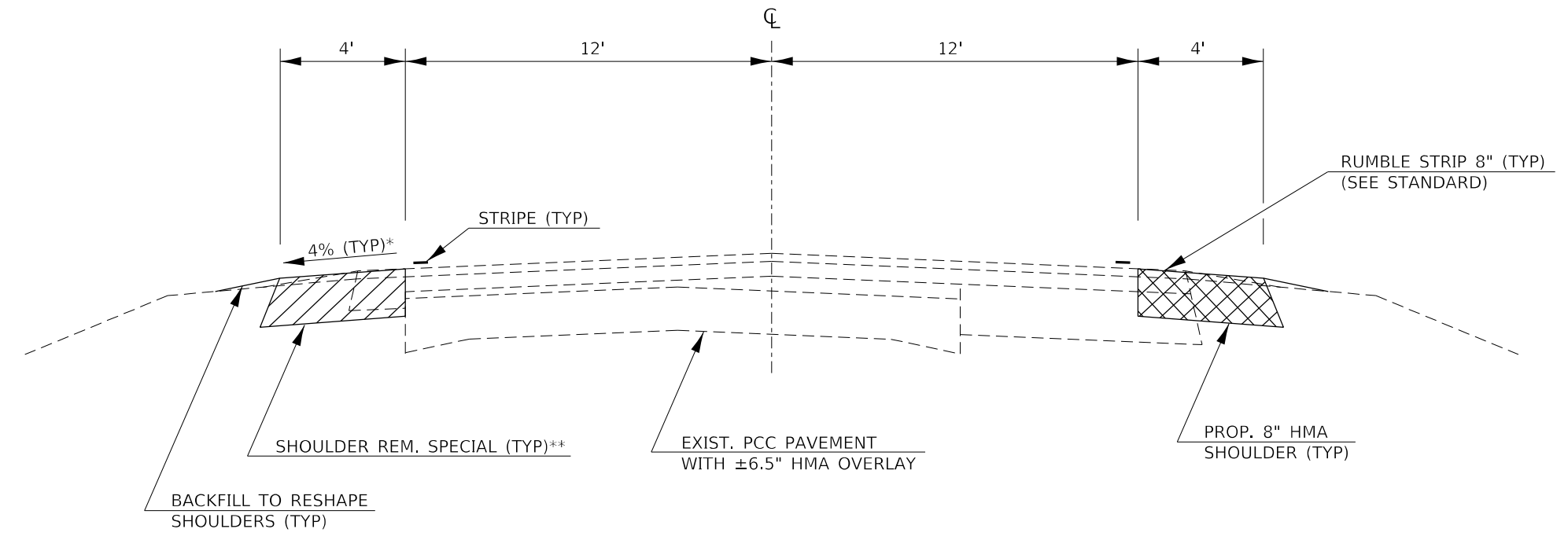
**STATE OF ILLINOIS
 DEPARTMENT OF TRANSPORTATION**

TYPICAL SECTIONS	
SCALE:	SHEET OF SHEETS STA. TO STA.

F.A. RTE.	SECTION	COUNTY	TOTAL SHEETS	SHEET NO.
VAR	(101, 39, 39C) SFY	KANKAKEE	10	5
CONTRACT NO. 66M17			ILLINOIS FED. AID PROJECT	



EXISTING TYPICAL SECTION
STA 337+00 TO STA 369+36



PROPOSED TYPICAL SECTION
STA 337+00 TO STA 369+36

*REFER TO STANDARD 482001 IN AREAS OF SUPERELEVATION

**WIDER SHOULDER IN THE CURVED SECTION FROM APPROX STA 340+00 TO STA 347+00 SHALL STILL BE REMOVED AND REPLACED.

MODEL: \\MODELS\MAR15... FILE: \\MAR15..._work\sidejob\budzynskim\0750535D\366M17-2-sh-cov-ec.dgn

USER NAME = budzynskim	DESIGNED -	REVISED -
	DRAWN -	REVISED -
PLOT SCALE = 100,0000' / in.	CHECKED -	REVISED -
PLOT DATE = 3/21/2022	DATE -	REVISED -

**STATE OF ILLINOIS
DEPARTMENT OF TRANSPORTATION**

TYPICAL SECTIONS				
SCALE:	SHEET	OF	SHEETS	STA. TO STA.

F.A. RTE.	SECTION	COUNTY	TOTAL SHEETS	SHEET NO.
VAR	(101, 39, 39C) SFY	KANKAKEE	10	6
CONTRACT NO. 66M17				
ILLINOIS FED. AID PROJECT				

SHOULDER REMOVAL & REPLACEMENT SCHEDULE									
LOCATION			SIDE	LENGTH	SHOULDER REMOVAL (SPECIAL)	HMA SHOULDERS 8"	BIT MTL S TACK COAT	SHOULDER RUMBLE STRIPS, 8"	*PAINT PVMT MARKING WHITE 4"
STA	TO	STA	LT / RT	FOOT	SQ YD	SQ YD	POUND	FOOT	FOOT
RURAL									
S 3000W RD = STA 50+49									
50+28	TO	0+00	LT & RT	5028	4470	4470	2012	10056	20112
STATION EQUATION									
STA 0+00 BK = STA 181+45 AH									
181+45	TO	183+28	LT & RT	183	163	163	74	366	732
S 2000W RD = STA 184+56									
RURAL TOTALS				5211	4633	4633	2086	10422	20844
URBAN									
185+84	TO	190+60	LT	476	212	212	96	476	952
190+60	TO	194+90	LT & RT	430	383	383	172	800	1720
194+90	TO	196+69	LT	179	80	80	36	179	358
196+69	TO	211+00	LT & RT	1431	1272	1272	573	2792	5724
W 3500S RD = STA 211+32									
211+64	TO	237+61	LT & RT	2597	2309	2309	1039	5129	10388
237+61	TO	237+84	RT	23	11	11	5	23	46
TOWNHALL RD = STA 237+84									
237+84	TO	238+07	RT	23	11	11	5	23	46
238+07	TO	245+10	LT & RT	703	625	625	282	1406	2812
245+10	TO	250+54	RT	544	242	242	109	544	1088
250+54	TO	277+43	LT & RT	2689	2391	2391	1076	5303	10756
277+43	TO	289+42	RT	1199	533	533	240	1199	2398
289+42	TO	290+50	LT & RT	108	96	96	44	216	432
W 2000S RD = STA 290+80									
291+16	TO	315+00	LT & RT	2384	2120	2120	954	4768	9536
STRUCTURE OMISSION									
SN 046-0152 = STA 317+68									
321+00	TO	340+36	LT & RT	1936	1721	1721	775	3807	7744
340+36	TO	340+80	RT	44	20	20	9	44	88
S 2000W RD = STA 340+80									
340+80	TO	341+49	RT	69	31	31	14	69	138
341+49	TO	345+33	LT & RT	384	342	342	154	768	1536
345+33	TO	346+14	RT	81	36	36	17	81	162
W 1000S RD = STA 346+14									
346+14	TO	346+70	RT	56	25	25	12	56	112
346+70	TO	369+36	LT & RT	2266	2015	2015	907	4452	9064
URBAN TOTALS				17622	14475	14475	6519	32135	67500
TOTALS				22833	19108	19108	8605	42557	88344

*QUANTITY REPRESENTS TWO SEPARATE APPLICATIONS

MODEL: \\MODELS\MH\MS FILES: \\MODELS\c:\p\work\sho\sho\budzynskim\0750535\03\0366M17-shr-cover.dgn

USER NAME = budzynskim	DESIGNED -	REVISED -
	DRAWN -	REVISED -
PLOT SCALE = 100,0000' / in.	CHECKED -	REVISED -
PLOT DATE = 3/28/2022	DATE -	REVISED -

**STATE OF ILLINOIS
DEPARTMENT OF TRANSPORTATION**

SCHEDULES

SCALE: SHEET OF SHEETS STA. TO STA.

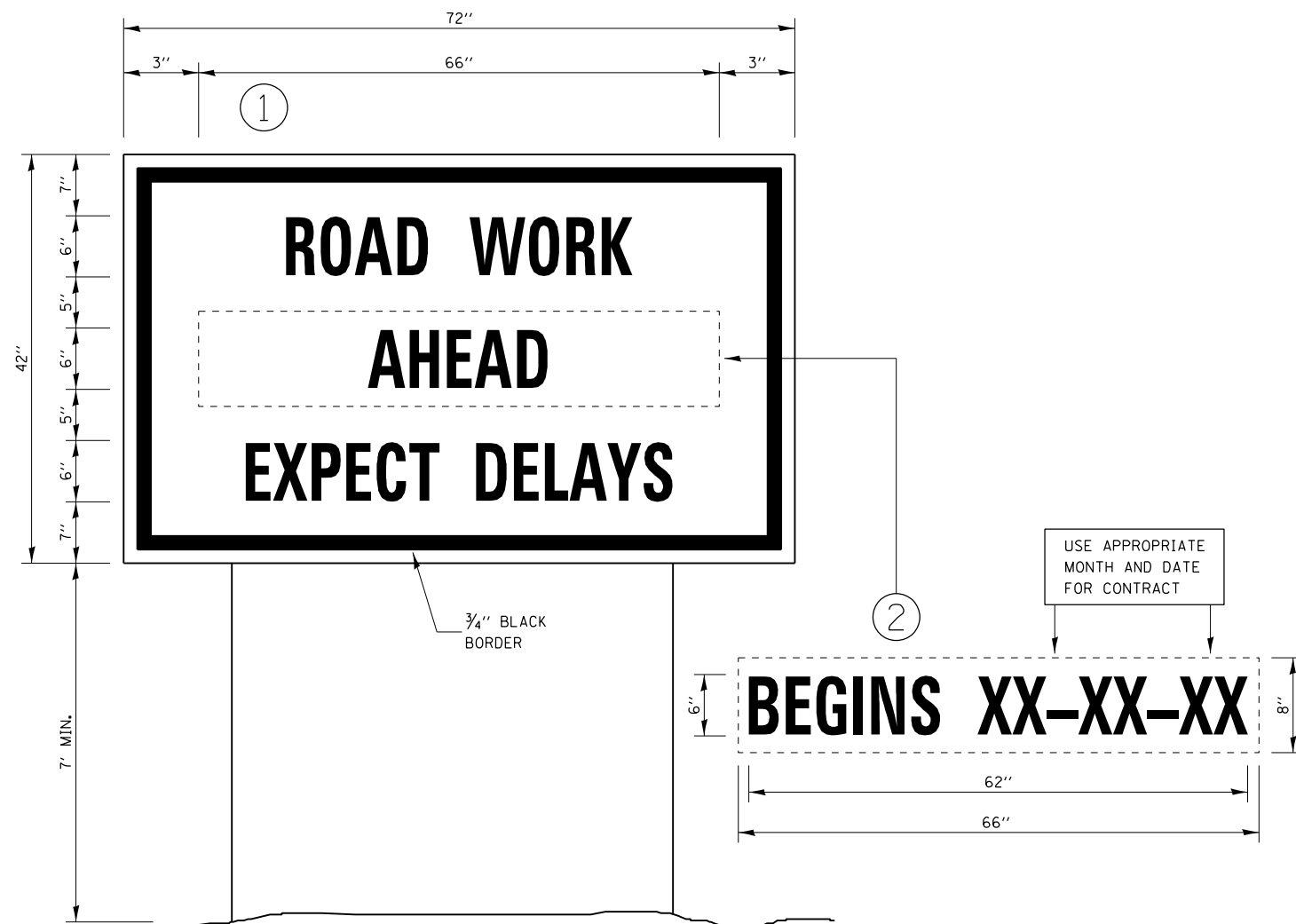
F.A. RTE.	SECTION	COUNTY	TOTAL SHEETS	SHEET NO.
VAR	(101, 39, 39C) SFY	KANKAKEE	10	7
			CONTRACT NO. 66M17	
		ILLINOIS FED. AID PROJECT		

MAILBOX TURNOUT SCHEDULE			
STA / SIDE	HMA SURF REMOVAL 2"	INCIDENTAL HMA SURF 2"	BIT MTLs TACK COAT
	SQ YD	TON	POUND
URBAN			
192+68 RT	17.5	2.0	8
194+90 TO 196+69 RT	NO WORK	-	-
197+30 RT	16.0	1.8	8
213+43 LT	11.7	1.4	6
245+10 TO 250+54 LT	NO WORK	-	-
273+48 LT	6.7	0.8	4
277+43 TO 289+42 LT	NO WORK	-	-
315+73 LT	NO WORK	-	-
335+71 LT	8.8	1.0	4
365+28 RT	9.9	1.2	5
URBAN TOTAL	70.6	8.2	35.0
TOTAL	70.6	8.2	35.0

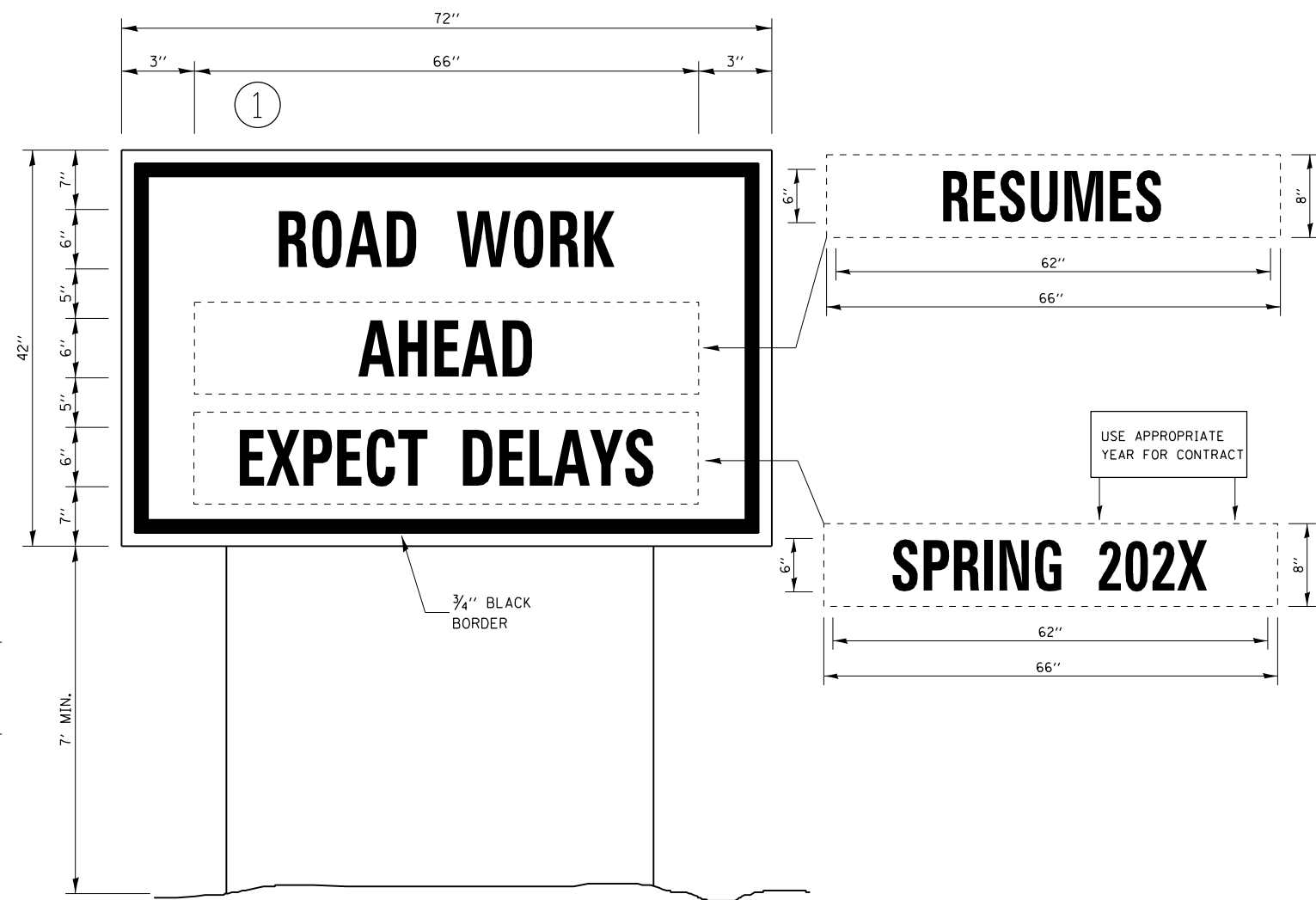
THE FIRST 4 FEET OF THE MBTO ADJACENT TO THE TRAVELED WAY IS PAID AS SHOULDER REMOVAL (SPECIAL) AND HMA SHOULDERS 8". THE REMAINING AREA OF THE MBTO IS PAID AS HMA SURFACE REMOVAL 2" AND INCIDENTAL HMA SURFACE 2".

SURVEY MONUMENT TABLE					
MONUMENT NUMBER	DESCRIPTION	EXISTING MONUMENT TYPE	PROPOSED MONUMENT TYPE	MONUMENT RECORD TO BE RECORDED	RESPONSIBILITY
N/A	NO CENTERLINE CONTROL OR LAND SURVEY	N/A	N/A	N/A	N/A
	PERMANENT SURVEY MARKERS TO BE SET ON THIS JOB				
<p>ONLY THE ORIGINAL SCOPE OF THIS JOB HAS BEEN SEARCHED FOR MONUMENTS. R.E. MUST INFORM PLATS AND PLANS TO SEARCH FOR ADDITIONAL MONUMENTS PRIOR TO CONSTRUCTION IF ADDENDUMS ARE ADDED.</p> <p>NO KNOWN LAND SURVEY OR CENTERLINE CONTROL MONUMENTS WILL BE DISTURBED BY THE CONSTRUCTION.</p> <p>UNKNOWN MONUMENTS MAY EXIST. IF AN UNLISTED MONUMENT IS FOUND, R.E. IS REQUIRED TO PROTECT THE MONUMENT FROM DAMAGE UNTIL A PLATS AND PLANS LAND SURVEYOR CAN DOCUMENT THE MONUMENT. PLATS AND PLANS WILL RESET SUCH MONUMENTS IN KIND FOLLOWING CONSTRUCTION.</p> <p>NO MONUMENT RECORDS ARE REQUIRED FOR THIS JOB.</p>					

MODEL: \\MODELS\MARIES
 FILE: \\MARIES\cadd\work\sidejob\budzynskim\0750535\0366M17-2-sh-cove.dgn



TEMPORARY INFORMATION SIGNING



WINTER SHUT DOWN SIGNING

NOTES:

1. USE 6" D BLACK LETTERING ON FLOURESENT ORANGE BACKGROUND.
2. ERECT SIGNS AT LOCATIONS IN ADVANCE OF THE "ROAD CONSTRUCTION AHEAD" SIGNS AS DIRECTED BY THE ENGINEER.
3. ERECT SIGN ① WITH INSTALLED PANEL ② A MINIMUM OF ONE WEEK PRIOR TO THE START OF THE LANE CLOSURE.
4. REMOVE PANEL ② ON THAT DATE.
5. SEE SPECIAL PROVISION "TEMPORARY INFORMATION SIGNING" FOR ADDITIONAL INFORMATION.
6. WILL BE PAID FOR PER SQ FT AS "TEMPORARY INFORMATION SIGNING". EACH SIGN = 21 SQ FT AND THE DATE PANEL ② WILL NOT BE MEASURED SEPARATELY FOR PAYMENT.

MODEL NAME: MAM17S
FILE NAME: sign_workshop\m17s\m17s-shut-cover.dgn

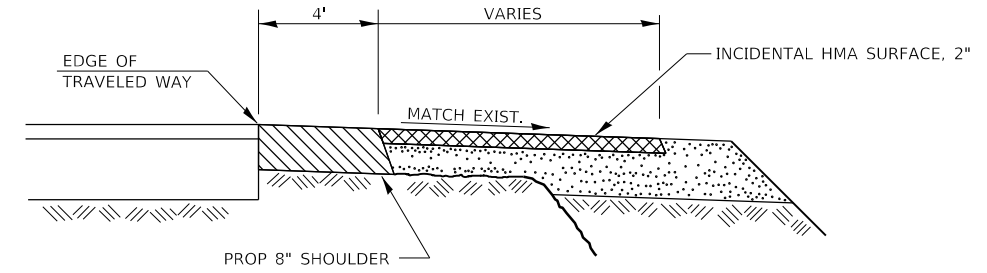
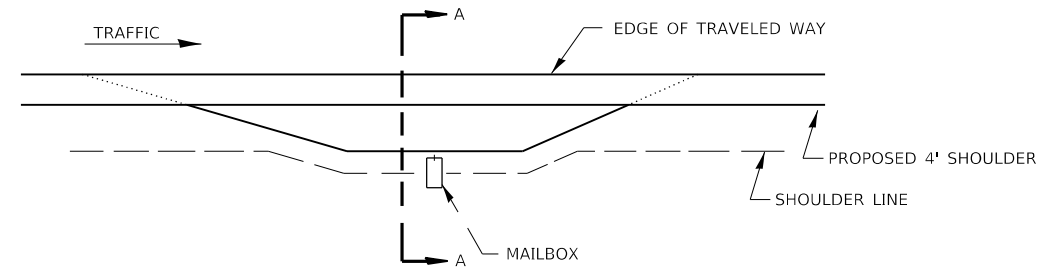
USER NAME = budzynskim	DESIGNED -	REVISED -
	DRAWN -	REVISED -
PLOT SCALE = 100.0000 ' / in.	CHECKED -	REVISED -
PLOT DATE = 3/21/2022	DATE -	REVISED -

**STATE OF ILLINOIS
DEPARTMENT OF TRANSPORTATION**

DETAILS

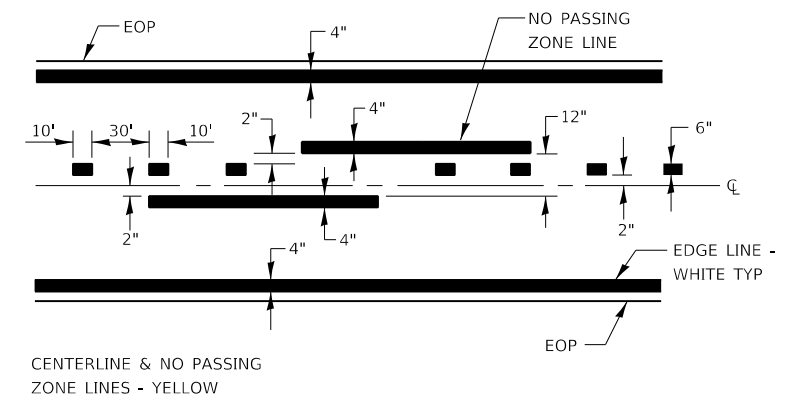
SCALE: SHEET OF SHEETS STA. TO STA.

F.A. RTE.	SECTION	COUNTY	TOTAL SHEETS	SHEET NO.
VAR	(101, 39, 39C) SFY	KANKAKEE	10	9
			CONTRACT NO. 66M17	
ILLINOIS FED. AID PROJECT				



SECTION A-A

RURAL MAILBOX TURNOUT DETAILS



PAVEMENT MARKING

MODEL: 4MODEL.MXD
 FILE: Mailbox_Cover.dwg
 User: budzynskim
 Date: 3/21/2022 10:53:35 AM

USER NAME = budzynskim	DESIGNED -	REVISED -
	DRAWN -	REVISED -
PLOT SCALE = 100,0000' / in.	CHECKED -	REVISED -
PLOT DATE = 3/21/2022	DATE -	REVISED -

**STATE OF ILLINOIS
DEPARTMENT OF TRANSPORTATION**

DETAILS			
SCALE:	SHEET	OF	SHEETS
	STA.		TO STA.

F.A. RTE.	SECTION	COUNTY	TOTAL SHEETS	SHEET NO.
VAR	(101, 39, 39C) SFY	KANKAKEE	10	10
CONTRACT NO. 66M17			ILLINOIS FED. AID PROJECT	