

STATE OF ILLINOIS
DEPARTMENT OF TRANSPORTATION

F.A.I. DATE	SECTION	COUNTY	TOTAL SHEETS	SHEET NO.
VAR.	D4 ELECTRICAL 2022-1	VARIOUS	27	1
		ILLINOIS	CONTRACT NO. 68G90	

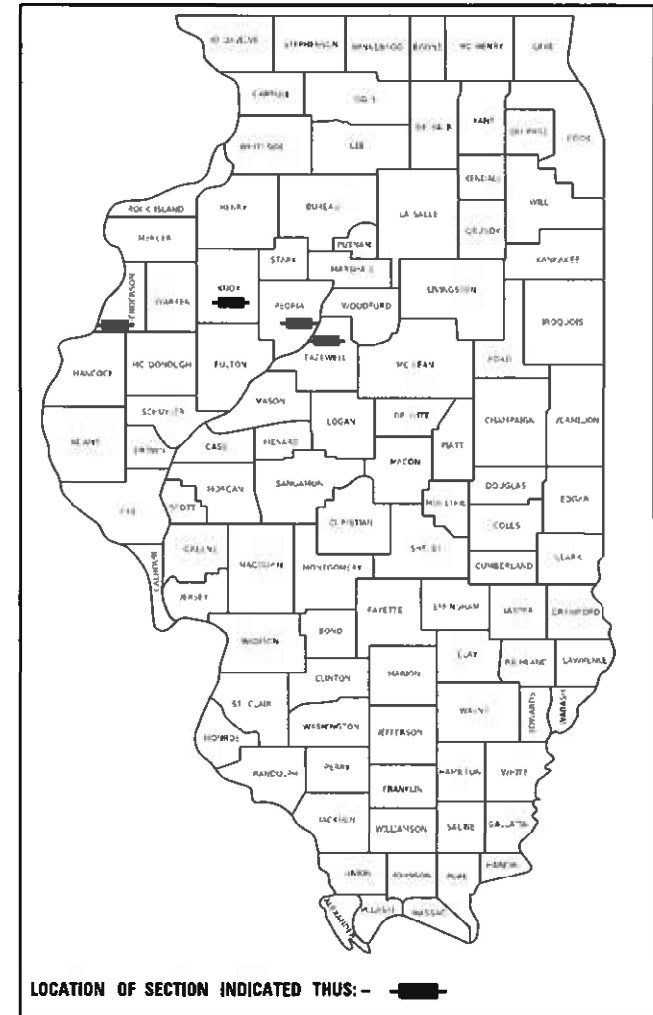
D-94-009-22

INDEX OF SHEETS:
SEE SHEET 2 FOR INDEX OF SHEETS

PROPOSED
HIGHWAY PLANS

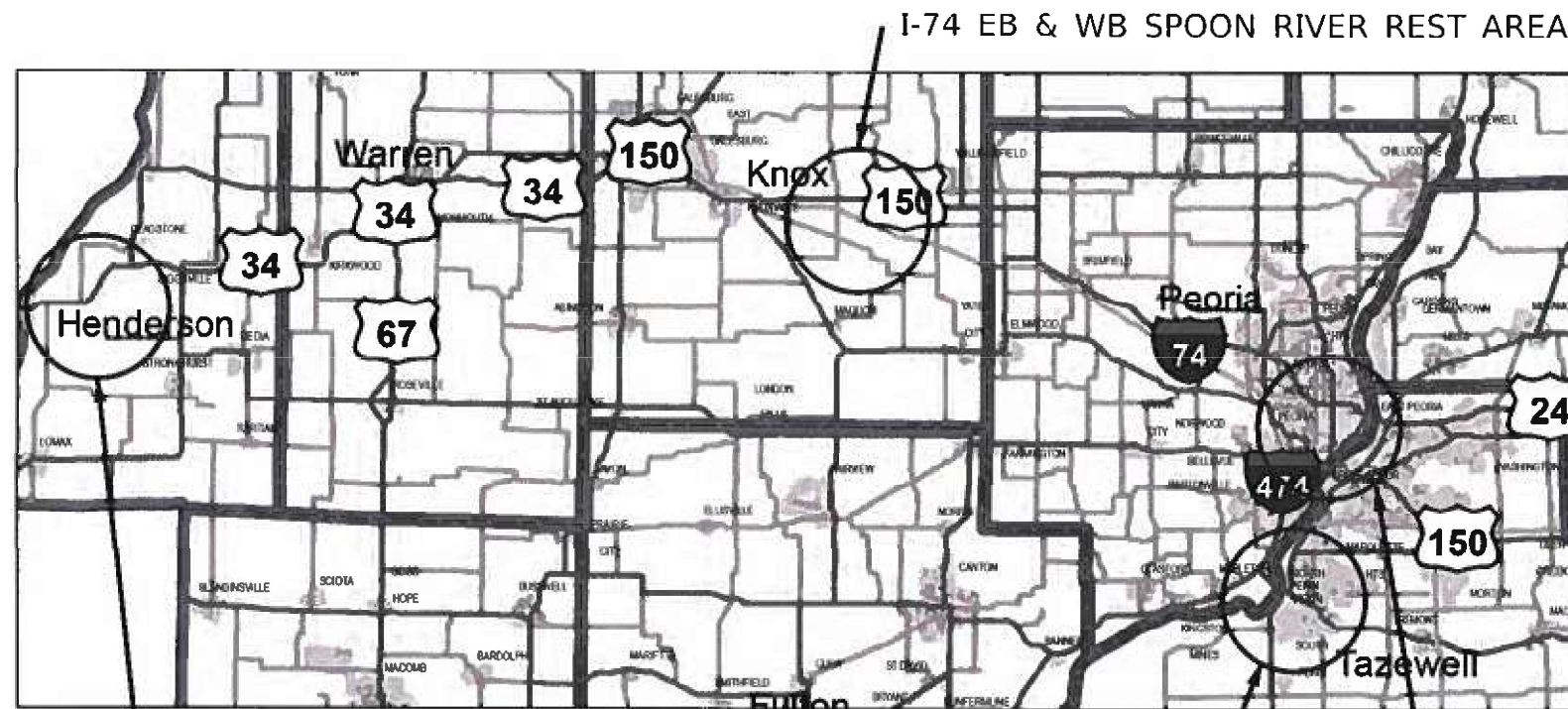
VARIOUS ROUTES
SECTION D4 ELECTRICAL 2022-1
CONTRACT MAINTENANCE
VARIOUS COUNTIES

C-94-024-22



HIGHWAY STANDARDS:
SEE SHEET 2 FOR A LIST OF
APPLICABLE HIGHWAY STANDARDS

PROJECT DESCRIPTION:
LIGHTING, TRAFFIC SIGNALS AND
ITS UPGRADES AT VARIOUS LOCATIONS
WITHIN DISTRICT 4.



J.U.L.I.E.
JOINT UTILITY LOCATION INFORMATION FOR EXCAVATORS
1-800-892-0123
OR 811

PROJECT ENGINEER : TREVOR HANSON (309) 671-4474
PROJECT MANAGER : BEN TELLEFSON (309) 671-4477
CATALOG NO. 036298-00D
CONTRACT NO. 68G90

STATE OF ILLINOIS
DEPARTMENT OF TRANSPORTATION

SUBMITTED April 20 22

[Signature] REGIONAL ENGINEER

May 13, 2022 [Signature]
ENGINEER OF DESIGN AND ENVIRONMENT

May 13, 2022 [Signature]
DIRECTOR OF HIGHWAYS PROJECT IMPLEMENTATION

PRINTED BY THE AUTHORITY
OF THE STATE OF ILLINOIS

NO COMMITMENTS HAVE BEEN MADE IN CONJUNCTION WITH THIS PROJECT.

INDEX OF SHEETS	
SHEET	DESCRIPTION
1	COVER SHEET
2	COMMITMENTS, INDEX OF SHEETS, AND HIGHWAY STANDARDS
3	CONSTRUCTION AND TRAFFIC CONTROL NOTES
4	SUMMARY OF QUANTITIES
5	SCHEDULE OF QUANTITIES
6	LIGHT POLE SCHEDULE
7	PROPOSED LUMINAIRE PERFORMANCE TABLE
8 - 14	EXISTING LIGHTING PLANS - I-74 EB & WB SPOON RIVER REST AREAS - KNOX COUNTY
15 - 16	EXISTING LIGHTING PLANS & REMOVAL ITEMS - I-74 EB SPOON RIVER REST AREA - KNOX COUNTY
17 - 18	PROPOSED LIGHTING PLANS - I-74 EB SPOON RIVER REST AREA - KNOX COUNTY
19 -20	EXISTING LIGHTING PLANS & REMOVAL ITEMS - I-74 WB SPOON RIVER REST AREA - KNOX COUNTY
21 - 22	PROPOSED LIGHTING PLANS - I-74 WB SPOON RIVER REST AREA - KNOX COUNTY
23	PROPOSED LIGHTING CIRCUIT DIAGRAM - I-74 EB & WB SPOON RIVER REST AREAS - KNOX COUNTY
24	PROPOSED CCTV CAMERA INSTALLATION - IL 98 (EDGEWATER DR.) & N. PARKWAY DR. - NORTH PEKIN
25	PROPOSED CCTV CAMERA INSTALLATION - US 34 & CARMAN ST. - HENDERSON COUNTY
26	PROPOSED CCTV CAMERA INSTALLATION - US 150 (WAR MEMORIAL DR.) & GRAND AVE. - PEORIA
27	PROPOSED CCTV CAMERA INSTALLATION - IL 29 (SE JEFFERSON ST.) & SPRING ST. - PEORIA

HIGHWAY STANDARDS	
STANDARD	APPLICATION
000001-08	STANDARD SYMBOLS, ABBREVIATIONS, AND PATTERNS
001006	DECIMAL OF AN INCH AND OF A FOOT
701001-02	OFF-ROAD OPERATIONS, 2L, 2W, MORE THAN 15' AWAY
701006-05	OFF-ROAD OPERATIONS, 2L, 2W, 15' TO 24" FROM PAVEMENT EDGE
701101-05	OFF-ROAD OPERATIONS, MULTILANE, 15' TO 24" FROM PAVEMENT EDGE
701106-02	OFF-ROAD OPERATIONS, MULTILANE, MORE THAN 15' AWAY
701456-05	PARTIAL EXIT RAMP CLOSURE FREEWAY / EXPRESSWAY
701701-10	URBAN LANE CLOSURE, MULTILANE INTERSECTION
701901-08	TRAFFIC CONTROL DEVICES
814001-03	HANDHOLES
821101-02	LUMINAIRE WIRING IN POLE
830021-02	LIGHT POLE STEEL TENON TOP
836001-04	LIGHT POLE FOUNDATION
838001-01	BREAKAWAY DEVICES

MODEL: Default
FILE: M:\GIS\Comm\GENTransfer - Bureau\68G90 - Final Plans\68G90 - Final Plans (4-1-22).dgn

USER NAME = hansonj	DESIGNED -	REVISED -
	DRAWN -	REVISED -
PLOT SCALE = 84.9615' / in.	CHECKED -	REVISED -
PLOT DATE = 4/1/2022	DATE -	REVISED -

STATE OF ILLINOIS
DEPARTMENT OF TRANSPORTATION

COMMITMENTS, INDEX OF SHEETS, HIGHWAY STANDARDS,
AND TRAFFIC CONTROL NOTES

SCALE: SHEET OF SHEETS STA. TO STA.

F.A.I. RTE.	SECTION	COUNTY	TOTAL SHEETS	SHEET NO.
VAR.	D4 ELECTRICAL 2022-1	VARIOUS	27	2
			CONTRACT NO. 68G90	
ILLINOIS FED. AID PROJECT				

CONSTRUCTION NOTES

1.	THE LOCATION OF ALL UTILITIES AND PRIVATELY OWNED FACILITIES SHALL BE FIELD VERIFIED BY THE CONTRACTOR PRIOR TO THE INSTALLATION OF ANY COMPONENTS.
2.	THE CONTRACTOR SHALL BE RESPONSIBLE FOR LOCATING EXISTING IDOT ELECTRICAL FACILITIES AT HIS/HER OWN EXPENSE IF REQUIRED. THE CONTRACTOR SHALL ALSO BE LIABLE FOR ANY DAMAGE TO IDOT FACILITIES RESULTING FROM INACCURATE LOCATING.
3.	ELECTRICAL WORK SHALL CONFORM WITH NATIONAL, STATE, AND LOCAL CODES.
4.	THE LOCATIONS FOR LIGHT POLES ARE PROVIDED FOR REFERENCE ONLY. THE ENGINEER OF TRAFFIC SHALL BE NOTIFIED FOR LOCATION VERIFICATION BEFORE INSTALLATION.
5.	ALL HIGHWAY LIGHTING STRUCTURES SHALL BE BONDED IN ACCORDANCE WITH NEC REQUIREMENTS. THIS WORK SHALL BE PAID FOR AT THE CONTRACT UNIT PRICE FOR THE UNIT DUCT AND SHALL INCLUDE ALL LABOR, EQUIPMENT, AND MATERIALS (INCLUDING CLAMPS, HARDWARE, ELECTRICAL CABLE, AND ALL OTHER ITEMS REQUIRED TO BOND THE STRUCTURES.)
6.	THE CONTRACTOR SHALL PROVIDE ELECTRICAL CABLE SLACK IN ACCORDANCE WITH ARTICLE 873.03.
7.	ELECTRICAL CABLE WILL BE MEASURED FOR PAYMENT IN ACCORDANCE WITH ARTICLE 817.04.
8.	POTHOLING TO LOCATE EXISTING UNDERGROUND UTILITIES SHALL BE INCLUDED IN THE CONTRACT BID PRICE FOR THE UNIT-DUCT PAY ITEM.
9.	ALL SURPLUS MATERIALS SHALL BE DISPOSED OF IN ACCORDANCE WITH ARTICLE 202.03 OF THE STANDARD SPECIFICATIONS.
10.	NO ADDITIONAL COMPENSATION WILL BE ALLOWED FOR PLACING UNIT-DUCT OR CONDUIT AT GREATER THAN 2 FT. MINIMUM DEPTH TO AVOID OBSTACLES SUCH AS UNDERGROUND UTILITIES.
11.	THE CONTRACTOR IS RESPONSIBLE FOR THE COST OF UNCOVERING OR HAND DIGGING AROUND UTILITIES AS NECESSARY. THIS COST OF THIS WORK SHALL BE INCLUDED IN THE UNIT PRICES FOR THE UNIT DUCT AND CONDUIT.
12.	THE CONTRACTOR SHALL VERIFY FIELD CONDITIONS PRIOR TO BIDDING. THERE WILL BE NO ADDITIONAL COMPENSATION PAID FOR CLAIMS THAT ARISE FROM A FAILURE TO FULLY INVESTIGATE EXISTING FIELD CONDITIONS.
13.	THE CONTRACTOR SHALL REMOVE AND DISPOSE OF THE EXISTING LIGHTING SYSTEM COMPLETELY (LIGHT POLES, LUMINAIRES, WIRING, ETC.) AS SHOWN IN THE PLANS. THIS WORK SHALL BE INCLUDED IN THE UNIT BID PRICE FOR "REMOVE EXISTING LIGHTING SYSTEM."
14.	THE CONTRACTOR SHALL FURNISH AND INSTALL NEW FUSEHOLDERS, FUSES, SURGE ARRESTORS, AND LUMINAIRE WIRING INSIDE THE POLE. THE COST OF THIS WORK SHALL BE INCLUDED IN THE PRICE OF THE PROPOSED LUMINAIRES.
15.	THE CONTRACTOR SHALL DISPOSE OF THE EXISTING LIGHT POLES, LUMINAIRES, WIRING, ETC. OFF THE JOB SITE. THE SALVAGE COST OF THESE ITEMS SHALL BE INCLUDED IN THE BID PRICE FOR "REMOVE EXISTING LIGHTING SYSTEM."
16.	ALL UNIT-DUCT SHALL BE HDPE SCHEDULE 40 OR BETTER.
17.	THE EXISTING LIGHTING SYSTEM SHALL REMAIN IN OPERATION UNTIL THE PROPOSED LIGHTING SYSTEM IS FULLY OPERATIONAL.
18.	THE COST OF THE PROPOSED 1.0 FT. LUMINAIRE ARM SHALL BE INCLUDED IN THE COST OF THE "LUMINAIRE MOUNTING BRACKET - SPECIAL."
19.	THE CONTRACTOR SHALL FURNISH AND INSTALL A MINIMUM OF ONE SET SCREW THROUGH BOTH SIDES OF THE POLE WHEN INSTALLING THE LUMINAIRE BRACKET MOUNT. THIS WORK SHALL BE INCLUDED IN THE COST OF THE LUMINAIRE BRACKET MOUNT.
20.	THE CONTRACTOR SHALL INSTALL THE CAMERA AT A 45° OR AS REQUIRED TO PROVIDE AN ADEQUATE VIEW OF ALL FOUR APPROACHES.
21.	THE EXISTING CAT5 ETHERNET CABLE SHALL BE RE-USED AT LOCATIONS WHERE AN EXISTING CCTV CAMERA IS TO BE REPLACED, AS SHOWN IN THE PLANS.

TRAFFIC CONTROL NOTES:

SPOON RIVER REST AREAS:

1. THE CONTRACTOR SHALL NOTIFY BRITTANY GAVIN, D4 ROADSIDE MANAGER, (309-671-4479) 7 DAYS PRIOR TO EXISTING LIGHTING SYSTEM REMOVAL.
2. PARKING SPACES AFFECTED BY THE LIGHTING SYSTEM REMOVAL AND INSTALLATION WORK SHALL BE BARRELLED OFF 24 HOURS PRIOR TO STARTING THE WORK. THE COST OF THIS WORK SHALL BE INCLUDED IN THE COST OF THE LIGHTING SYSTEM REMOVAL AND INSTALLATION.

MODEL: Default
FILE NAME: C:\common\GEN\Transfer - Bureau\68G90 - Final Plans\68G90 - Final Plans (4-1-22).dgn

USER NAME = hansonj	DESIGNED -	REVISED -
PLOT SCALE = 84,9615 * / in.	DRAWN -	REVISED -
PLOT DATE = 4/3/2022	CHECKED -	REVISED -
	DATE -	REVISED -

STATE OF ILLINOIS
DEPARTMENT OF TRANSPORTATION

CONSTRUCTION NOTES

SCALE: SHEET OF SHEETS STA. TO STA.

F.A.I. RTE.	SECTION	COUNTY	TOTAL SHEETS	SHEET NO.
VAR.	D4 ELECTRICAL 2022-1	VARIOUS	27	3
			CONTRACT NO. 68G90	
		ILLINOIS FED. AID PROJECT		

SUMMARY OF QUANTITIES				HENDERSON COUNTY	KNOX COUNTY	PEORIA COUNTY	TAZEWELL COUNTY
				CONST. CODE 0021	CONST. CODE 0021	CONST. CODE 0021	CONST. CODE 0021
				100% STATE	100% STATE	100% STATE	100% STATE
				ITS	OVERHEAD LIGHTING	ITS	ITS
ITEM NUMBER	ITEM DESCRIPTION	UNIT	TOTAL QTY.	RURAL	RURAL	URBAN	URBAN
67100100	MOBILIZATION	L SUM	1.0	0.1	0.7	0.1	0.1
81603010	UNIT DUCT, 600V, 2-1C NO.10, 1/C NO.10 GROUND, (XLP-TYPE USE), 3/4" DIA. POLYETHYLENE	FOOT	5575.0		5575.0		
82110008	LUMINAIRE, LED, ROADWAY, OUTPUT DESIGNATION H	EACH	28.0		28.0		
83600356	LIGHT POLE FOUNDATION, METAL, 15" BOLT CIRCLE, 8 5/8" X 6'	EACH	21.0		21.0		
83060830	LIGHT POLE, GALVANIZED STEEL, 45 FT. M.H., TENON MOUNT	EACH	21.0		21.0		
83800650	BREAKAWAY DEVICE, COUPLING WITH STAINLESS STEEL SCREEN	EACH	84.0		84.0		
89502385	REMOVE EXISTING CONCRETE FOUNDATION	EACH	10.0		10.0		
X0320023	CLOSED CIRCUIT TELEVISION DOME CAMERA, HD	EACH	4.0	1.0		2.0	1.0
X0326812	CAT 5 ETHERNET CABLE	FOOT	433.0			228.0	205.0
X0325541	REMOVE EXISTING LIGHTING SYSTEM	L SUM	1.0		1.0		
X7010216	TRAFFIC CONTROL AND PROTECTION, (SPECIAL)	L SUM	1.0	0.1	0.7	0.1	0.1
X8210402	LUMINAIRE MOUNTING BRACKET - SPECIAL	EACH	28.0		28.0		

MODEL: Default
 FILE: M:\MISC_G\COMMON\CENTRAL\Transfer - Bureau\68G90 - Final Plans\68G90 - Final Plans (4-1-22).dgn

USER NAME = hansonj	DESIGNED -	REVISED -
	DRAWN -	REVISED -
PLOT SCALE = 84.9615' / in.	CHECKED -	REVISED -
PLOT DATE = 4/1/2022	DATE -	REVISED -

**STATE OF ILLINOIS
DEPARTMENT OF TRANSPORTATION**

SUMMARY OF QUANTITIES

SCALE: SHEET OF SHEETS STA. TO STA.

F.A.I. RTE.	SECTION	COUNTY	TOTAL SHEETS	SHEET NO.
VAR.	D4 ELECTRICAL 2022-1	VARIOUS	27	4
			CONTRACT NO. 68G90	
ILLINOIS FED. AID PROJECT				

SCHEDULE OF QUANTITIES

ITEM DESCRIPTION	UNIT	TOTAL QTY.	HENDERSON COUNTY	KNOX COUNTY		PEORIA COUNTY		TAZEWELL COUNTY
			US 34 & CARMAN ST.	I-74 EB SPOON RIVER REST AREA	I-74 WB SPOON RIVER REST AREA	US 150 (WAR MEMORIAL) & GRAND AVE.	IL 29 (JEFFERSON) & SPRING ST.	IL 98 (EDGEWATER DR.) & PARKWAY DR.
MOBILIZATION	L SUM	1.0	0.1	0.3	0.3	0.1	0.1	0.1
UNIT DUCT, 600V, 2-1C NO.10, 1/C NO.10 GROUND, (XLP-TYPE USE), 3/4" DIA. POLYETHYLENE	FOOT	5575.0		2620.0	2955.0			
LUMINAIRE, LED, ROADWAY, OUTPUT DESIGNATION H	EACH	28.0		14.0	14.0			
LIGHT POLE FOUNDATION, METAL, 15" BOLT CIRCLE, 8 5/8" X 6'	EACH	21.0		10.0	11.0			
LIGHT POLE, GALVANIZED STEEL, 45 FT. M.H., TENON MOUNT	EACH	21.0		10.0	11.0			
BREAKAWAY DEVICE, COUPLING WITH STAINLESS STEEL SCREEN	EACH	84.0		40.0	44.0			
REMOVE EXISTING CONCRETE FOUNDATION	EACH	10.0		5.0	5.0			
CLOSED CIRCUIT TELEVISION DOME CAMERA, HD	EACH	4.0	1.0			1.0	1.0	1.0
CAT 5 ETHERNET CABLE	FOOT	433.0					228.0	205.0
REMOVE EXISTING LIGHTING SYSTEM	L SUM	1.0		0.5	0.5			
TRAFFIC CONTROL AND PROTECTION, (SPECIAL)	L SUM	1.0	0.1	0.3	0.3	0.1	0.1	0.1
LUMINAIRE MOUNTING BRACKET - SPECIAL	EACH	28.0		14.0	14.0			

MODEL: Default
 FILE NAME: C:\Common\GEN\Transfer - Bureau\68G90 - Final\Plan68G90 - Final.dwg (5-23-22).dgn

USER NAME = hansonj	DESIGNED -	REVISED - 5-23-22 TJH
	DRAWN -	REVISED -
PLOT SCALE = 84.9615 * / in.	CHECKED -	REVISED -
PLOT DATE = 5/23/2022	DATE -	REVISED -

**STATE OF ILLINOIS
DEPARTMENT OF TRANSPORTATION**

SCHEDULE OF QUANTITIES

SCALE: SHEET OF SHEETS STA. TO STA.

F.A.I. RTE.	SECTION	COUNTY	TOTAL SHEETS	SHEET NO.
VAR.	D4 ELECTRICAL 2022-1	VARIOUS	27	5
			CONTRACT NO. 68G90	
		ILLINOIS FED. AID PROJECT		

LIGHT POLE SCHEDULE

I-74 EB SPOON RIVER REST AREA PARKING LOT

POLE NO.	STATION	SETBACK (FT.)	POLE TYPE	MOUNTING HEIGHT (FT.)	ARM LENGTH (FT.)	LUMINAIRE TYPE (QTY.)	LUMINAIRE MOUNTING BRACKET - SPECIAL QTY.
1	-	-	EX. GALVANIZED STEEL	45.0	1.0	LUMINAIRE, LED, ROADWAY, OUTPUT DESIGNATION H (1.0)	1.0
2	-	-	EX. GALVANIZED STEEL	45.0	1.0	LUMINAIRE, LED, ROADWAY, OUTPUT DESIGNATION H (1.0)	1.0
4	-	-	EX. GALVANIZED STEEL	45.0	1.0	LUMINAIRE, LED, ROADWAY, OUTPUT DESIGNATION H (1.0)	1.0
5	-	-	EX. GALVANIZED STEEL	45.0	1.0	LUMINAIRE, LED, ROADWAY, OUTPUT DESIGNATION H (1.0)	1.0
6	105+85	20.0	GALVANIZED STEEL, TENON MOUNT	45.0	1.0	LUMINAIRE, LED, ROADWAY, OUTPUT DESIGNATION H (1.0)	1.0
7	108+10	20.0	GALVANIZED STEEL, TENON MOUNT	45.0	1.0	LUMINAIRE, LED, ROADWAY, OUTPUT DESIGNATION H (1.0)	1.0
8	201+90	25.0	GALVANIZED STEEL, TENON MOUNT	45.0	1.0	LUMINAIRE, LED, ROADWAY, OUTPUT DESIGNATION H (1.0)	1.0
9	110+25	20.0	GALVANIZED STEEL, TENON MOUNT	45.0	1.0	LUMINAIRE, LED, ROADWAY, OUTPUT DESIGNATION H (1.0)	1.0
10	203+85	30.0	GALVANIZED STEEL, TENON MOUNT	45.0	1.0	LUMINAIRE, LED, ROADWAY, OUTPUT DESIGNATION H (1.0)	1.0
11	112+35	35.0	GALVANIZED STEEL, TENON MOUNT	45.0	1.0	LUMINAIRE, LED, ROADWAY, OUTPUT DESIGNATION H (1.0)	1.0
12	206+45	20.0	GALVANIZED STEEL, TENON MOUNT	45.0	1.0	LUMINAIRE, LED, ROADWAY, OUTPUT DESIGNATION H (1.0)	1.0
13	114+65	40.0	GALVANIZED STEEL, TENON MOUNT	45.0	1.0	LUMINAIRE, LED, ROADWAY, OUTPUT DESIGNATION H (1.0)	1.0
14	116+85	20.0	GALVANIZED STEEL, TENON MOUNT	45.0	1.0	LUMINAIRE, LED, ROADWAY, OUTPUT DESIGNATION H (1.0)	1.0
15	119+05	35.0	GALVANIZED STEEL, TENON MOUNT	45.0	1.0	LUMINAIRE, LED, ROADWAY, OUTPUT DESIGNATION H (1.0)	1.0

I-74 WB SPOON RIVER REST AREA PARKING LOT

POLE NO.	STATION	SETBACK (FT.)	POLE TYPE	MOUNTING HEIGHT (FT.)	ARM LENGTH (FT.)	LUMINAIRE TYPE (QTY.)	LUMINAIRE MOUNTING BRACKET - SPECIAL QTY.
1	-	-	EX. GALVANIZED STEEL	45.0	1.0	LUMINAIRE, LED, ROADWAY, OUTPUT DESIGNATION H (1.0)	1.0
2	-	-	EX. GALVANIZED STEEL	45.0	1.0	LUMINAIRE, LED, ROADWAY, OUTPUT DESIGNATION H (1.0)	1.0
3	-	-	EX. GALVANIZED STEEL	45.0	1.0	LUMINAIRE, LED, ROADWAY, OUTPUT DESIGNATION H (1.0)	1.0
4	110+85	20.0	GALVANIZED STEEL, TENON MOUNT	45.0	1.0	LUMINAIRE, LED, ROADWAY, OUTPUT DESIGNATION H (1.0)	1.0
5	113+05	20.0	GALVANIZED STEEL, TENON MOUNT	45.0	1.0	LUMINAIRE, LED, ROADWAY, OUTPUT DESIGNATION H (1.0)	1.0
6	115+00	20.0	GALVANIZED STEEL, TENON MOUNT	45.0	1.0	LUMINAIRE, LED, ROADWAY, OUTPUT DESIGNATION H (1.0)	1.0
7	203+80	20.0	GALVANIZED STEEL, TENON MOUNT	45.0	1.0	LUMINAIRE, LED, ROADWAY, OUTPUT DESIGNATION H (1.0)	1.0
8	204+75	20.0	GALVANIZED STEEL, TENON MOUNT	45.0	1.0	LUMINAIRE, LED, ROADWAY, OUTPUT DESIGNATION H (1.0)	1.0
9	206+95	30.0	GALVANIZED STEEL, TENON MOUNT	45.0	1.0	LUMINAIRE, LED, ROADWAY, OUTPUT DESIGNATION H (1.0)	1.0
10	116+45	35.0	GALVANIZED STEEL, TENON MOUNT	45.0	1.0	LUMINAIRE, LED, ROADWAY, OUTPUT DESIGNATION H (1.0)	1.0
11	118+20	20.0	GALVANIZED STEEL, TENON MOUNT	45.0	1.0	LUMINAIRE, LED, ROADWAY, OUTPUT DESIGNATION H (1.0)	1.0
12	1120+45	20.0	GALVANIZED STEEL, TENON MOUNT	45.0	1.0	LUMINAIRE, LED, ROADWAY, OUTPUT DESIGNATION H (1.0)	1.0
13	122+70	20.0	GALVANIZED STEEL, TENON MOUNT	45.0	1.0	LUMINAIRE, LED, ROADWAY, OUTPUT DESIGNATION H (1.0)	1.0
14	124+95	40.0	GALVANIZED STEEL, TENON MOUNT	45.0	1.0	LUMINAIRE, LED, ROADWAY, OUTPUT DESIGNATION H (1.0)	1.0

MODEL: Default
 FILE NAME: C:\Common\GEN\Transfer - Bureau\68G90 - Final Plans\68G90 - Final Plans (5-23-22).dgn

USER NAME = hansonj	DESIGNED -	REVISED - 5-23-22 TJH
	DRAWN -	REVISED -
PLOT SCALE = 84.9615' / in.	CHECKED -	REVISED -
PLOT DATE = 5/23/2022	DATE -	REVISED -

**STATE OF ILLINOIS
DEPARTMENT OF TRANSPORTATION**

LIGHT POLE SCHEDULE

SCALE: SHEET OF SHEETS STA. TO STA.

F.A.I. RTE.	SECTION	COUNTY	TOTAL SHEETS	SHEET NO.
74	D4 ELECTRICAL 2022-1	KNOX	27	6
CONTRACT NO. 68G90				
ILLINOIS FED. AID PROJECT				

Luminaire Performance Table

Project

Date	Contract Number	Section Number	County
3/24/22	68G90	D4-ELECTRICAL 2022-1	KNOX

Marked Route Number	Municipality
I-74 AT SPOON RIVER REST AREA	UNINCORPORATED ELBA TOWNSHIP

Roadway

Lane Width	#of Lanes	Median Width	I.E.S Surface Classification	Q-Zero Value
12	4	N/A	R3	0.07

Structure

Mounting Height	Arm Length	Set Back	Number of Luminaires (Highmast & Sign Lighting Only)
45 FT	1 FT	20 FT	N/A

Luminaire

Description	I.E.S. Lateral Distribution	I.E.S. Vertical Distribution
ROADWAY, OUTPUT DESIGNATION H	TYPE III	MEDIUM

Total Light Loss Factor (LLF)	BUG Rating	Shields	Dimming Protocol
0.7	U = 0	N/A	0-10V

Layout

Spacing (to Nearest 5 Ft)	Configuration (Opposite, Staggered, 1 Sided, or Median)
145 FT	SINGLE SIDED

Performance

Average Illuminance, E_{AVE} (fc)	Uniformity Ratio, E_{AVE}/E_{MIN}
GREATER THAN OR EQUAL TO 1.1	LESS THAN OR EQUAL TO 4:1

Average Luminance, L_{AVE} (cd/m ²)	Uniformity Ratio, L_{AVE}/L_{MIN}	Uniformity Ratio, L_{MAX}/L_{MIN}	Veiling Luminance Ratio, L_v/L_{MIN}
GREATER THAN OR EQUAL TO 0.8	LESS THAN OR EQUAL TO 3:1	LESS THAN OR EQUAL TO 5:1	LESS THAN OR EQUAL TO 0.4:1

Light Trespass

Distance to ROW (behind pole)	Max. Horizontal Illuminance at ROW, E	Max. Vertical Illuminance at ROW, E
N/A	N/A	N/A

Notes

1. Set Back is from Edge of Pavement (white line) except for sign luminaires when it is vertical and horizontal distance from the sign to the luminaire.
2. Lighting calculations shall be performed with all luminaires oriented toward and perpendicular to roadway.
3. Total Light Loss Factor (LLF) = the product of "Lumen Maintenance" (LLD) = 0.9, "Dirt Depreciation" (LDD) = 0.8, and "Equipment Factors" (EF) = 0.95.
4. Performance requirements shall be the minimum acceptable standards of photometric performance for the luminaire, based on the given conditions above.
5. All LED luminaires shall be mounted horizontally.
6. Calculations shall be performed in one direction only.
7. Performance criteria shall be held to one significant digit.
8. Initial lumens may exceed the values given in the table in Article 1067.06 (25,200 lumens) of the special provision LUMINAIRE, LED (BDE).

NOTE:
PERFORMANCE VALUES MAY BE ROUNDED UP TO ONE SIGNIFICANT DIGIT.

MODEL: Default
 FILE NAME: C:\common\GEN\Transfer - Bureau\68G90 - Final Plans\68G90 - Final Plans (4-1-22).dgn

NOT TO SCALE

USER NAME = hansonj	DESIGNED -	REVISED -	
	DRAWN -	REVISED -	
PLOT SCALE = 84,9615 * / in.	CHECKED -	REVISED -	
PLOT DATE = 4/3/2022	DATE -	REVISED -	

**STATE OF ILLINOIS
DEPARTMENT OF TRANSPORTATION**

PROPOSED LUMINAIRE PERFORMANCE TABLE				
SCALE:	SHEET	OF	SHEETS	STA. TO STA.

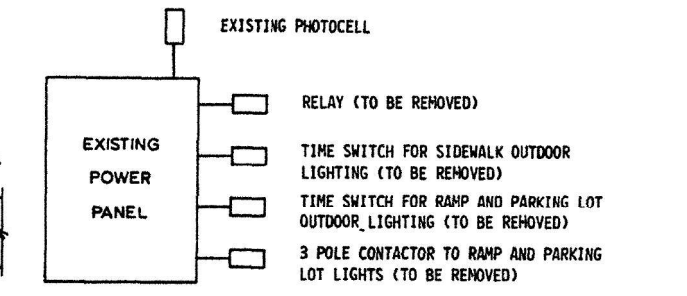
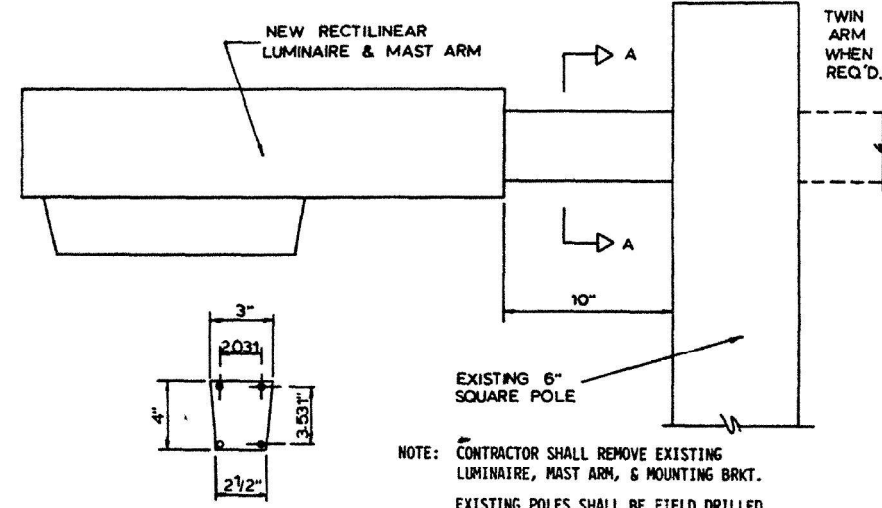
F.A.I. RTE.	SECTION	COUNTY	TOTAL SHEETS	SHEET NO.
74	D4 ELECTRICAL 2022-1	KNOX	27	7
CONTRACT NO. 68G90				
ILLINOIS FED. AID PROJECT				

REMOVE EXISTING LUMINAIRES AND ARM(S) & INSTALL NEW LUMINAIRE & ARM PER DETAIL, FOR RECTILINEAR LUMINAIRES ONLY (SEE NOTE BELOW)

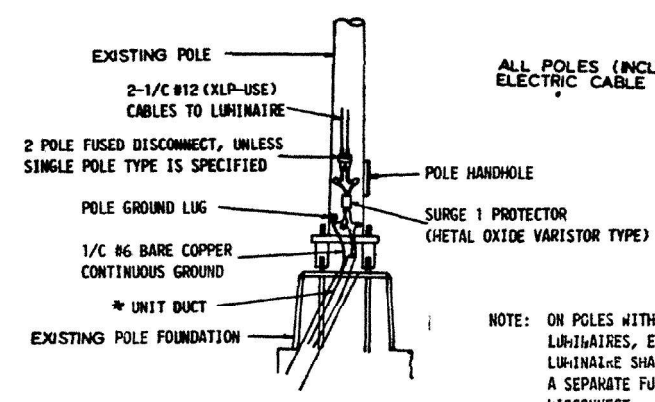
NOTE REMOVED LUMINAIRES SHALL BECOME THE PROPERTY OF THE CONTRACTOR, AND SHALL BE REFLECTED IN HIS BID ON THE LUMINAIRES

LUMINAIRE SODIUM VAPOR RECTILINEAR TYPE, 150 WATT = 40 EACH

EXISTING Pole one piece seamless aluminum extrusion 6 3/8" sq with 3/16" wall thickness, 28' height



- A 60 AMP 3-POLE CONTACTOR
- B 3 POSITION SELECTOR SWITCH
- C, D 50 AMP 2-POLE CIRCUIT BREAKERS
- E 20 AMP SINGLE POLE CIRCUIT BREAKER (WALKWAY LIGHTING)
- F 10 AMP SINGLE POLE CIRCUIT BREAKER
- G GROUND BUSS
- H SURGE PROTECTORS

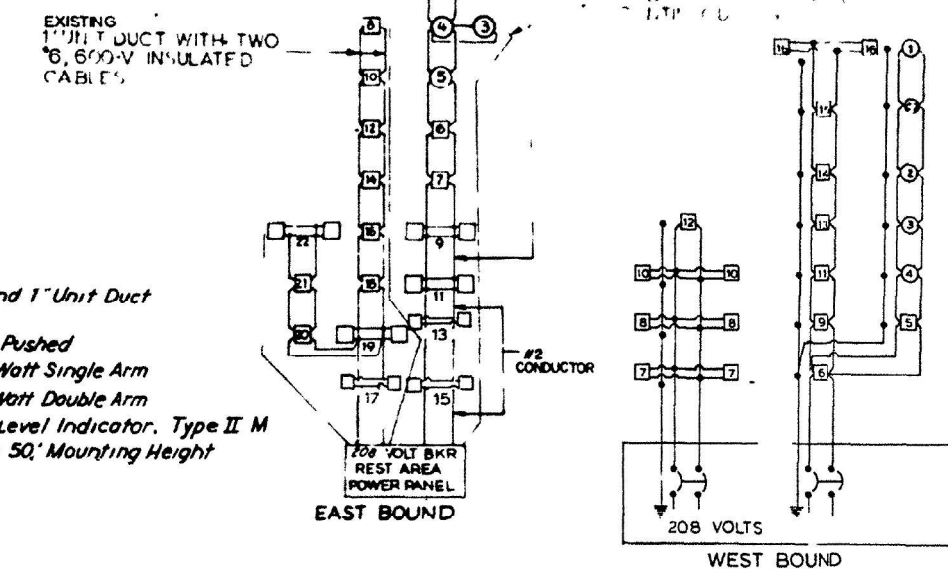
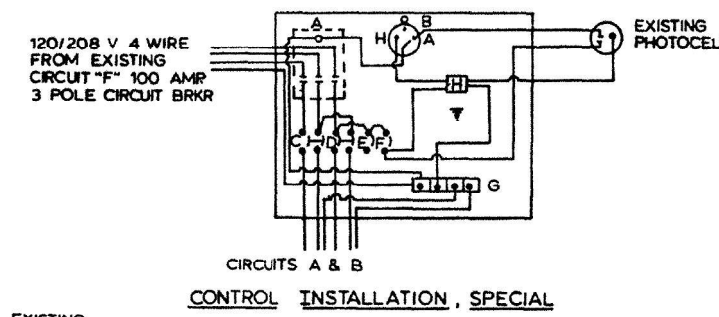


ALL POLES (INCLUDING POLES @ EXIT RAMPS) ELECTRIC CABLE IN CONDUIT, 600V(XLP-USE) 1/2" #12 = 3476 LIN. FT

POLE BASE MOUNTING WIRING

* NEW UNIT DUCT SHALL BE INSTALLED IN BASES AT *5, *6, *7, *9 (WESTBOUND)

- Note
- * 6 Bare Direct Buried Continuous Ground and 1" Unit Duct with two # 6, 600 Volt Insulated Cables.
 - Galvanized Steel Conduit in Trench / Conduit Pushed
 - Parking Area Light Unit, 28 Ft M H with 250 Watt Single Arm
 - Parking Area Light Unit, 28 Ft M H with 250 Watt Double Arm
 - 400 Watt M V Lighting Unit with Pattern, and Level Indicator, Type II M Bracket Arm shall be orientated as shown Pole 50' Mounting Height



REST AREA LIGHTING
F.A.I. 74 SECTION 48-29 RA
KNOX COUNTY

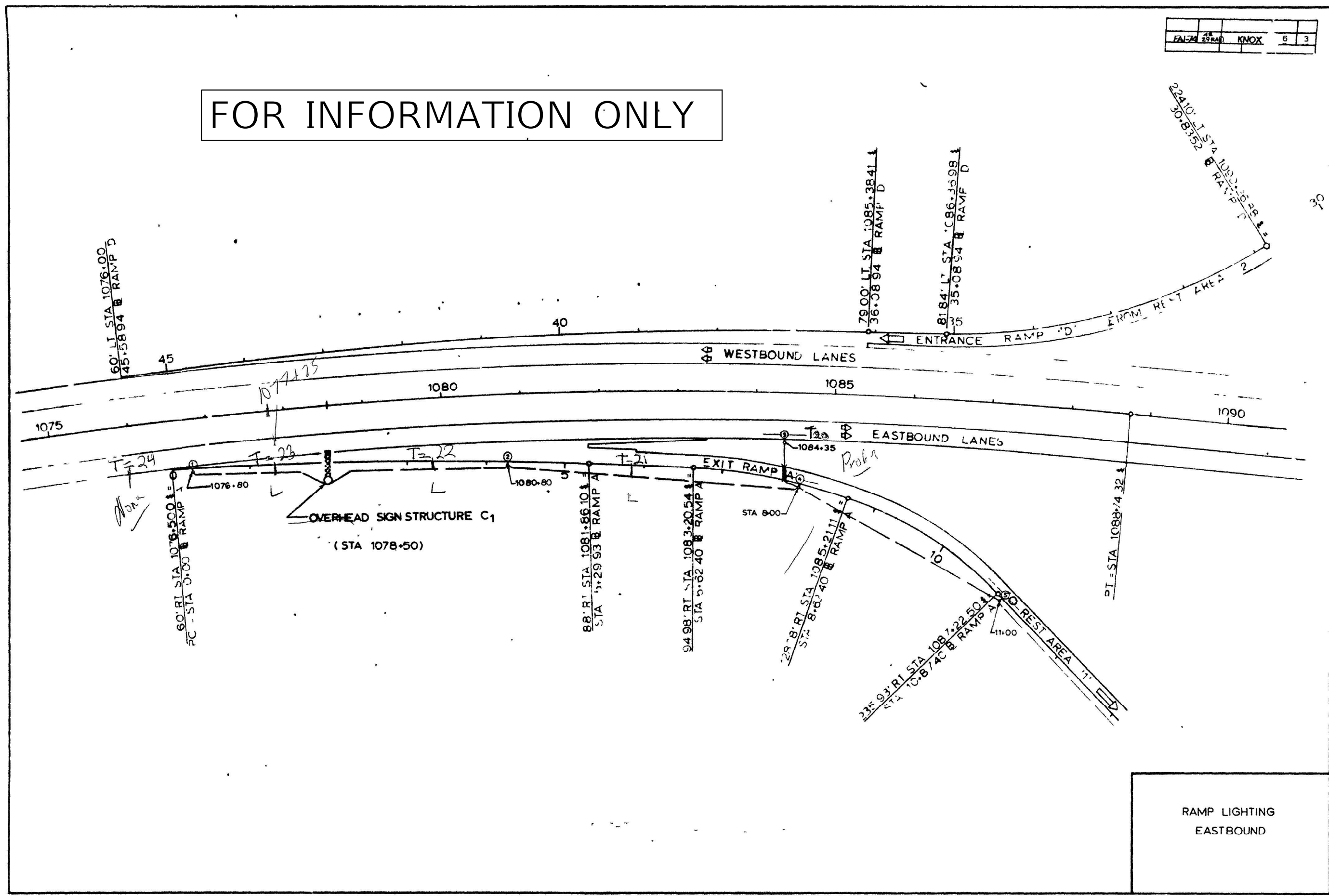
FOR INFORMATION ONLY

USER NAME = hansonj DESIGNED - DRAWN - PLOT SCALE = 84.9615" / in. PLOT DATE = 4/1/2022	DESIGNED - DRAWN - CHECKED - DATE -	REVISED - REVISED - REVISED - REVISED -	STATE OF ILLINOIS DEPARTMENT OF TRANSPORTATION	EXISTING LIGHT POLE DETAIL AND CIRCUIT DIAGRAMS I-74 EB & WB SPOON RIVER REST AREAS - KNOX COUNTY	F.A.I. RTE. 74 SECTION D4 ELECTRICAL 2022-1 COUNTY KNOX TOTAL SHEETS 27 SHEET NO. 8 CONTRACT NO. 68G90
---	--	--	---	--	---

MODEL Default
 FILE NAME C:\common\GEN\Transfe... Bureau\68G90 - Final Plans\68G90 - Final Plans (4-1-22).dgn

FA-74	29 R40	KNOX	6	3
-------	--------	------	---	---

FOR INFORMATION ONLY



RAMP LIGHTING
EASTBOUND

MODEL: Default
FILE: \\NAME\G:\Common\GEN\Transfer\..._burs\I-74\EB\68G90 - Final\Plan\68G90 - Final\Plan.dwg

USER NAME = hansonj	DESIGNED -	REVISED -
PLOT SCALE = 84.9615' / in.	DRAWN -	REVISED -
PLOT DATE = 4/1/2022	CHECKED -	REVISED -
	DATE -	REVISED -

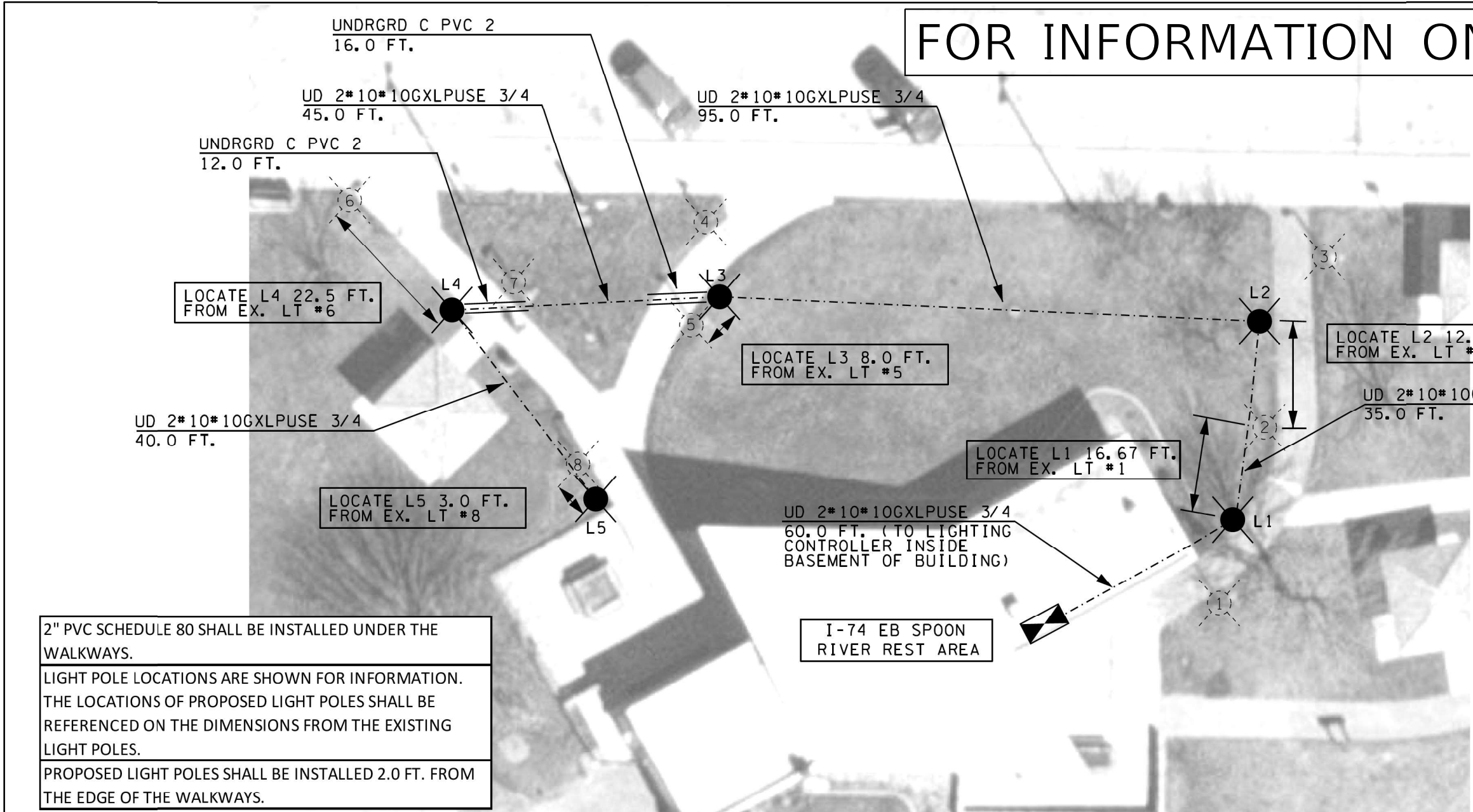
STATE OF ILLINOIS
DEPARTMENT OF TRANSPORTATION

EXISTING LIGHTING PLANS
I-74 EB SPOON RIVER REST AREA - KNOX COUNTY

SCALE: SHEET OF SHEETS STA. TO STA.

F.A.I. RTE.	SECTION	COUNTY	TOTAL SHEETS	SHEET NO.
74	D4 ELECTRICAL 2022-1	KNOX	27	9
CONTRACT NO. 68G90				
ILLINOIS FED. AID PROJECT				

FOR INFORMATION ONLY



2" PVC SCHEDULE 80 SHALL BE INSTALLED UNDER THE WALKWAYS.
 LIGHT POLE LOCATIONS ARE SHOWN FOR INFORMATION. THE LOCATIONS OF PROPOSED LIGHT POLES SHALL BE REFERENCED ON THE DIMENSIONS FROM THE EXISTING LIGHT POLES.
 PROPOSED LIGHT POLES SHALL BE INSTALLED 2.0 FT. FROM THE EDGE OF THE WALKWAYS.

LEGEND

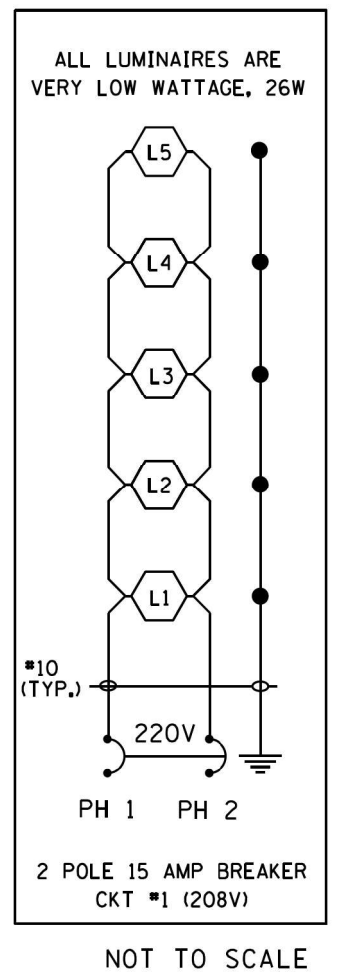
PROP. LIGHT POLE, STEEL, 14' M. H. EQUIPPED WITH VERY LOW WATTAGE LED LUMINAIRE, TYPE II DISTRIBUTION

PROP. UNIT DUCT, 600V, 2-1C NO. 10, 1/C *10 GND (XLP-USE), 3/4 DIA.

PROP. CONDUIT, 2" PVC, SCH 80

**BILL OF MATERIALS
I-74 EB SPOON RIVER REST AREA**

ITEM DESCRIPTION	UNIT	TOTAL QTY.
UNDERGROUND CONDUIT, PVC, 2" DIA.	FOOT	28.0
UNIT DUCT, 600V, 2-1C NO.10, 1/C NO.10 GROUND, (XLP-TYPE USE), 3/4" DIA. POLYETHYLENE	FOOT	275.0
LUMINAIRE, LED, HORIZONTAL MOUNT, VERY LOW WATTAGE	EACH	5.0
LIGHTING CONTROLLER, SPECIAL	EACH	1.0
LIGHT POLE, SPECIAL	EACH	5.0
LIGHT POLE FOUNDATION, SPECIAL	EACH	5.0



FILE NAME =	USER NAME = hansonj	DESIGNED -	REVISED -
D:\common\GEN\Transfer - bureau\68E46	- Final Plans\68E46 - Spoon River Rest Area	DRAWN (Final: 5-18-18)dgn	REVISED -
PLOT SCALE = 19.4264' / in.	CHECKED -	REVISED -	REVISED -
PLOT DATE = 5/18/2018	DATE -	REVISED -	REVISED -

**STATE OF ILLINOIS
DEPARTMENT OF TRANSPORTATION**

**PROPOSED WALKWAY LIGHTING
I-74 EB SPOON RIVER AREA**

F.A.I. RTE. 74	SECTION 48-29RA(L-1)	COUNTY KNOX	TOTAL SHEETS 17	SHEET NO. 7
CONTRACT NO. 68E46				
ILLINOIS FED. AID PROJECT				

USER NAME = hansonj	DESIGNED -	REVISED -
DRAWN -	REVISED -	REVISED -
PLOT SCALE = 84.9615' / in.	CHECKED -	REVISED -
PLOT DATE = 4/1/2022	DATE -	REVISED -

**STATE OF ILLINOIS
DEPARTMENT OF TRANSPORTATION**

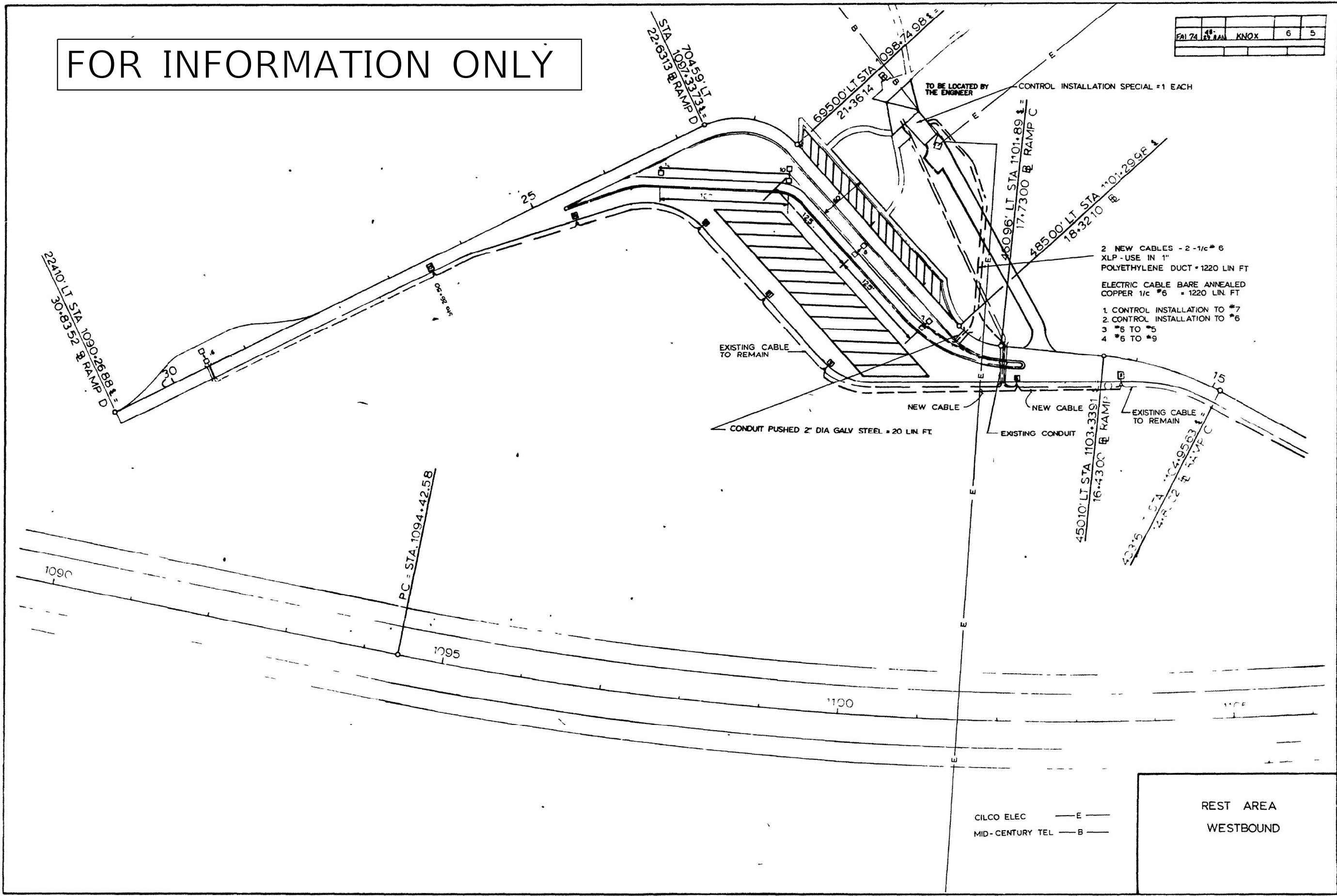
**EXISTING LIGHTING PLANS
I-74 EB SPOON RIVER REST AREA - KNOX COUNTY**

F.A.I. RTE. 74	SECTION D4 ELECTRICAL 2022-1	COUNTY KNOX	TOTAL SHEETS 27	SHEET NO. 11
CONTRACT NO. 68G90				
ILLINOIS FED. AID PROJECT				

MODEL: Default
FILE NAME: C:\common\GEN\Transfer - bureau\68G90 - Final Plans\68G90 - Final Plans (4-1-22).dgn

FOR INFORMATION ONLY

FBI 74	48	27	KNOX	6	5
--------	----	----	------	---	---



MODEL: Default
 FILE NAME: C:\Common\GEN\Transfer - Bureau\68G90 - Final Plans\68G90 - Final Plans (4-1-22).dgn

USER NAME = hansonj	DESIGNED -	REVISED -
PLOT SCALE = 84.9615' / in.	DRAWN -	REVISED -
PLOT DATE = 4/1/2022	CHECKED -	REVISED -
	DATE -	REVISED -

STATE OF ILLINOIS
 DEPARTMENT OF TRANSPORTATION

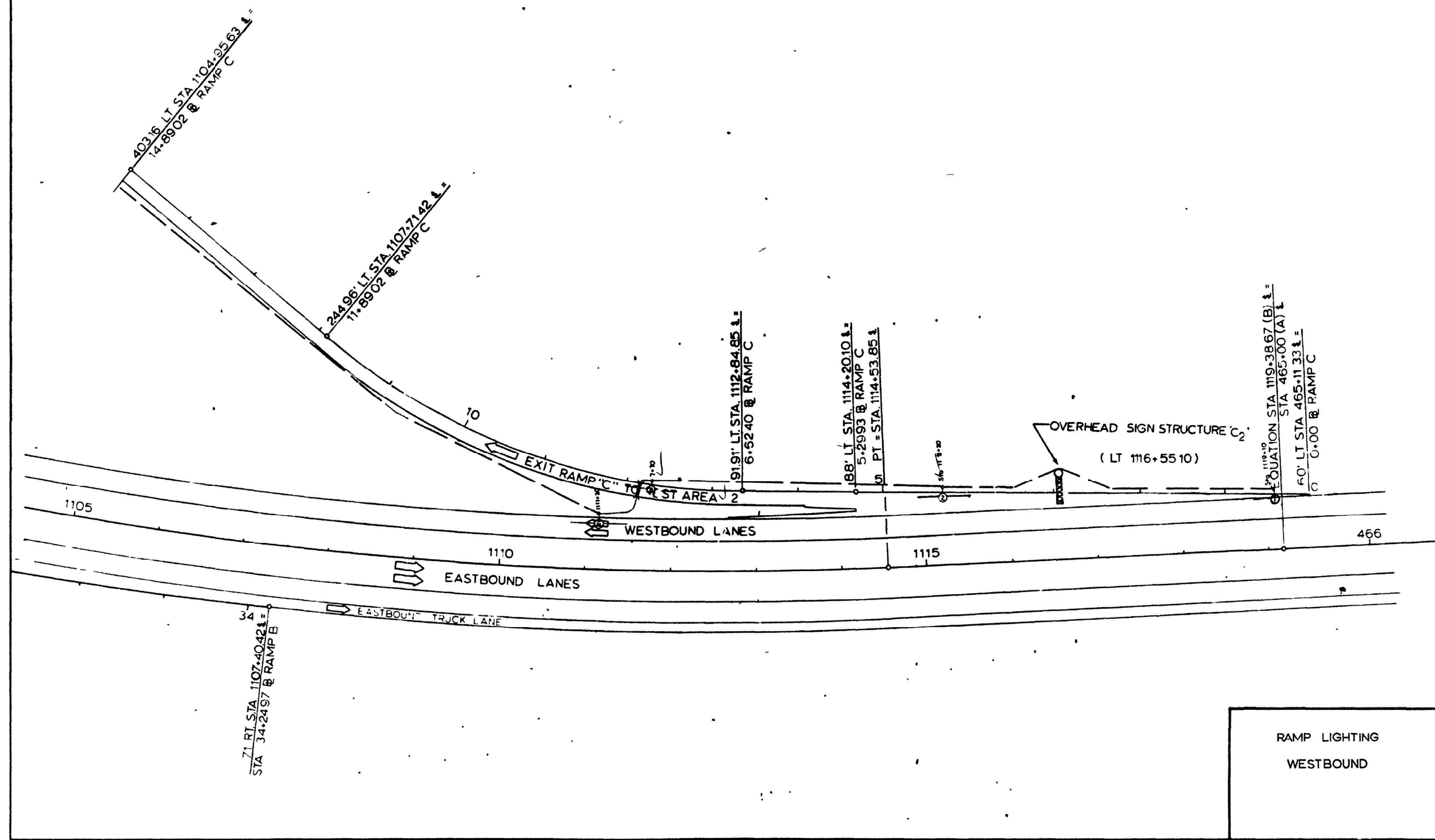
EXISTING LIGHTING PLANS
 I-74 WB SPOON RIVER REST AREA - KNOX COUNTY

F.A.I. RTE.	SECTION	COUNTY	TOTAL SHEETS	SHEET NO.
74	D4 ELECTRICAL 2022-1	KNOX	27	12
CONTRACT NO. 68G90				
ILLINOIS FED. AID PROJECT				

SCALE: SHEET OF SHEETS STA. TO STA.

FA-74	18	KNOX	6	6
-------	----	------	---	---

FOR INFORMATION ONLY



RAMP LIGHTING
WESTBOUND

MODEL: Default
FILE NAME: C:\common\GEN\Transfer - Bureau\68G90 - Final Plans\68G90 - Final Plans (4-1-22).dgn

USER NAME = hansonj	DESIGNED -	REVISED -
PLOT SCALE = 84.9615' / in.	DRAWN -	REVISED -
PLOT DATE = 4/1/2022	CHECKED -	REVISED -
	DATE -	REVISED -

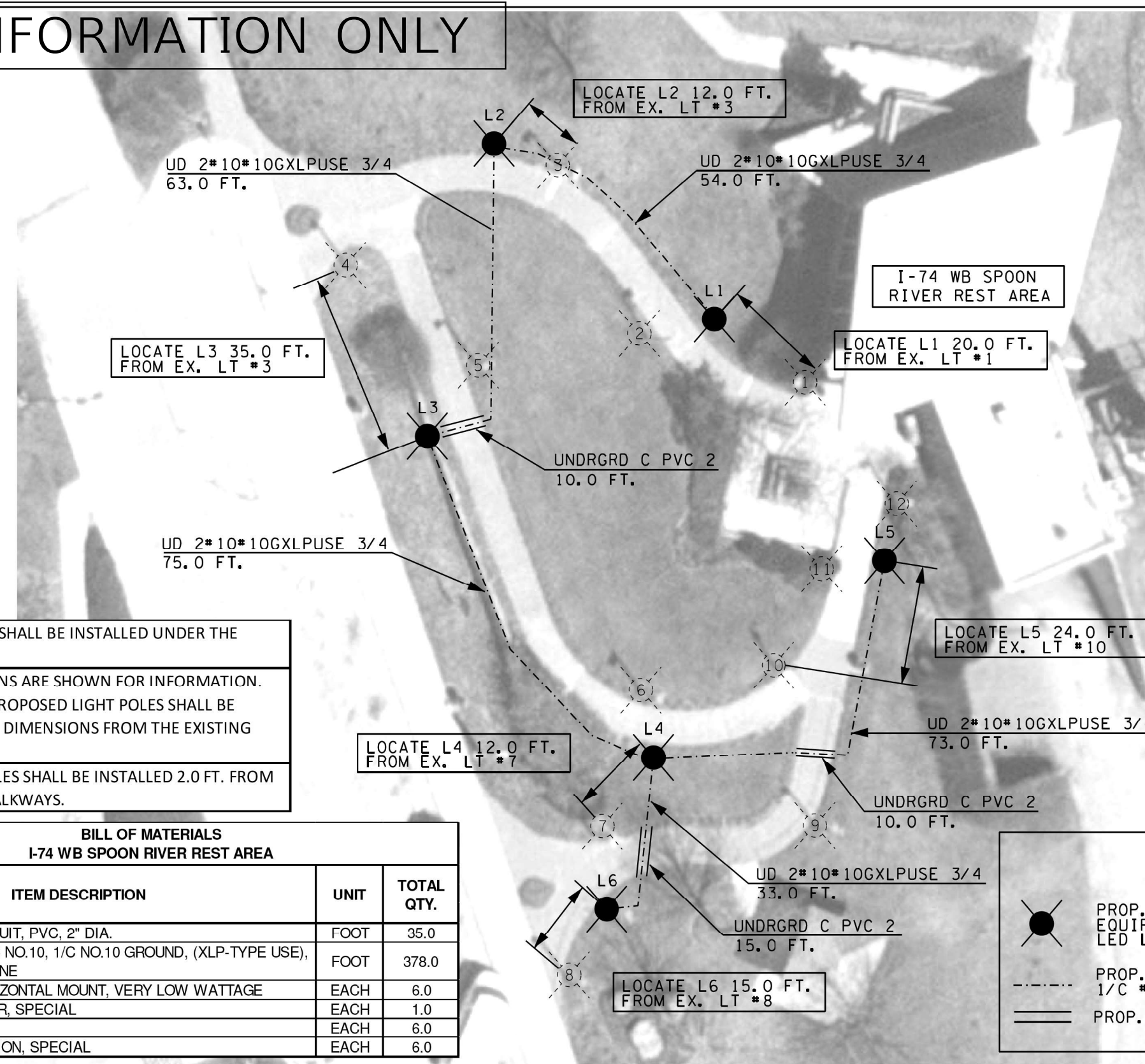
STATE OF ILLINOIS
DEPARTMENT OF TRANSPORTATION

EXISTING LIGHTING PLANS
I-74 WB SPOON RIVER REST AREA - KNOX COUNTY

F.A.I. RTE.	SECTION	COUNTY	TOTAL SHEETS	SHEET NO.
74	D4 ELECTRICAL 2022-1	KNOX	27	13
ILLINOIS FED. AID PROJECT			CONTRACT NO. 68G90	

SCALE: SHEET OF SHEETS STA. TO STA.

FOR INFORMATION ONLY

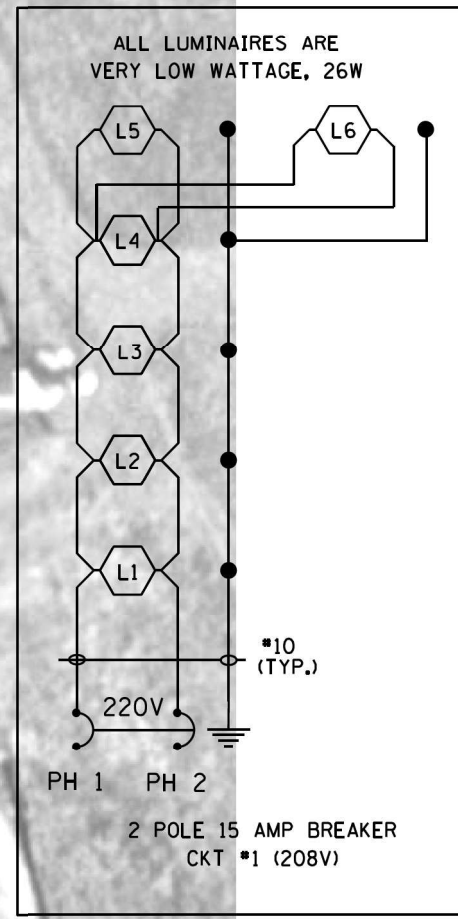


2" PVC SCHEDULE 80 SHALL BE INSTALLED UNDER THE WALKWAYS.

LIGHT POLE LOCATIONS ARE SHOWN FOR INFORMATION. THE LOCATIONS OF PROPOSED LIGHT POLES SHALL BE REFERENCED ON THE DIMENSIONS FROM THE EXISTING LIGHT POLES.

PROPOSED LIGHT POLES SHALL BE INSTALLED 2.0 FT. FROM THE EDGE OF THE WALKWAYS.

BILL OF MATERIALS I-74 WB SPOON RIVER REST AREA		
ITEM DESCRIPTION	UNIT	TOTAL QTY.
UNDERGROUND CONDUIT, PVC, 2" DIA.	FOOT	35.0
UNIT DUCT, 600V, 2-1C NO.10, 1/C NO.10 GROUND, (XLP-TYPE USE), 3/4" DIA. POLYETHYLENE	FOOT	378.0
LUMINAIRE, LED, HORIZONTAL MOUNT, VERY LOW WATTAGE	EACH	6.0
LIGHTING CONTROLLER, SPECIAL	EACH	1.0
LIGHT POLE, SPECIAL	EACH	6.0
LIGHT POLE FOUNDATION, SPECIAL	EACH	6.0



LEGEND

- PROP. LIGHT POLE, STEEL, 14' M.H. EQUIPPED WITH VERY LOW WATTAGE LED LUMINAIRE, TYPE II DISTRIBUTION
- PROP. UNIT DUCT, 600V, 2-1C NO. 10, 1/C #10 GND (XLP-USE), 3/4 DIA.
- ==== PROP. CONDUIT, 2" PVC, SCH 80

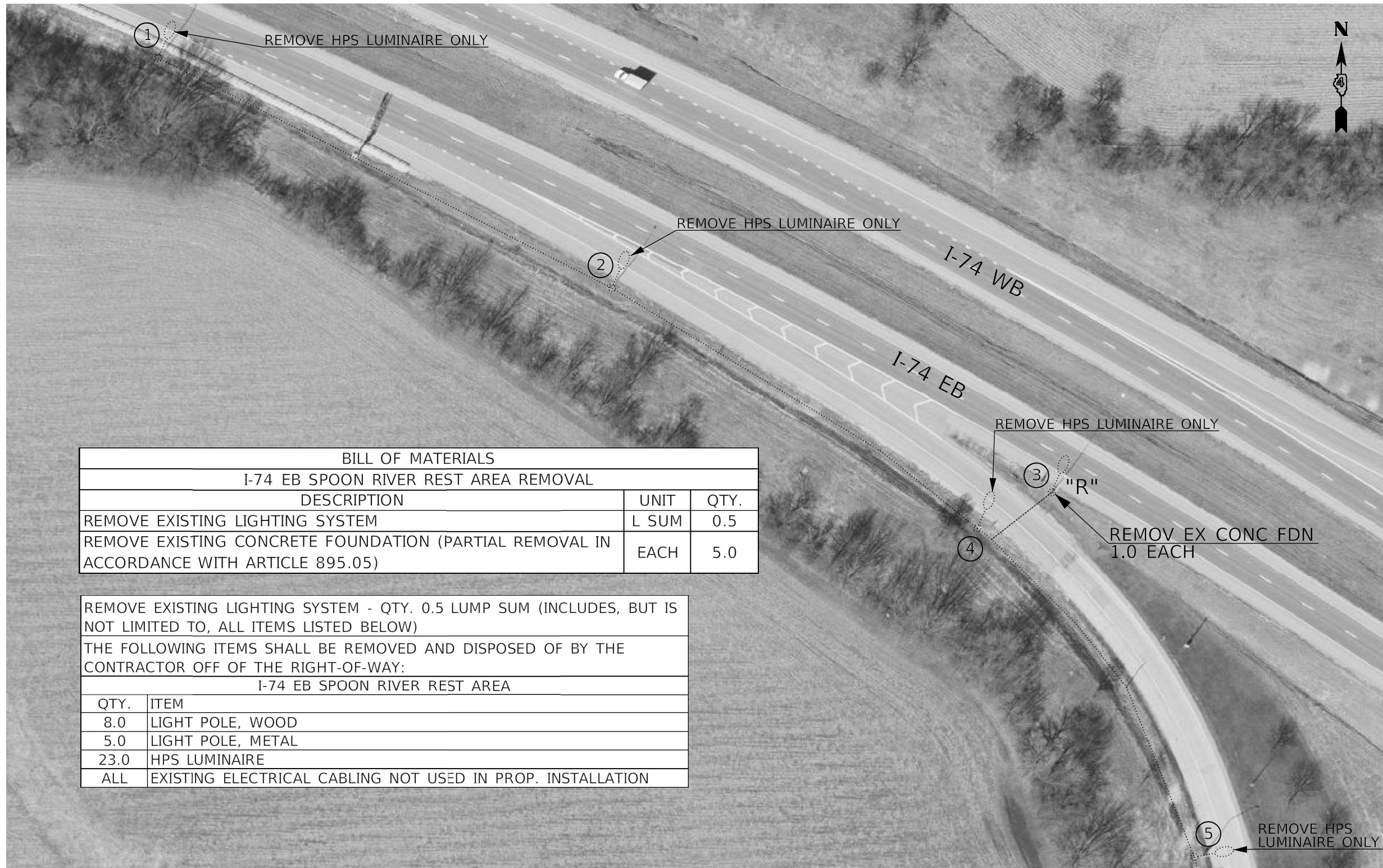
FILE NAME =	USER NAME = hansonj	DESIGNED -	REVISED -
D:\common\GEN\Transfer - bureaus\68E46 - Final Plans\68E46 - Spoon River Rest Area	- Final Plans\68E46 - Spoon River Rest Area	DRAWN (Final-5-18-18).dgn	REVISED -
	PLOT SCALE = 1/4" = 1'-0"	CHECKED -	REVISED -
	PLOT DATE = 5/18/2018	DATE -	REVISED -

STATE OF ILLINOIS DEPARTMENT OF TRANSPORTATION		PROPOSED WALKWAY LIGHTING I-74 WB SPOON RIVER REST AREA		F.A.I. RTE.	SECTION	COUNTY	TOTAL SHEETS	SHEET NO.	
		SCALE: _____	STA. _____ TO STA. _____	74	48-29RAIL-1)	KNOX	17	8	
								CONTRACT NO. 68E46	
								ILLINOIS FED. AID PROJECT	

USER NAME = hansonj	DESIGNED -	REVISED -
DRAWN -	REVISED -	REVISED -
PLOT SCALE = 1/4" = 1'-0"	CHECKED -	REVISED -
PLOT DATE = 4/1/2022	DATE -	REVISED -

STATE OF ILLINOIS DEPARTMENT OF TRANSPORTATION		EXISTING LIGHTING PLANS I-74 WB SPOON RIVER REST AREA - KNOX COUNTY		F.A.I. RTE.	SECTION	COUNTY	TOTAL SHEETS	SHEET NO.	
		SCALE: _____	SHEET _____ OF _____ SHEETS	STA. _____ TO STA. _____	74	D4 ELECTRICAL 2022-1	KNOX	27	14
								CONTRACT NO. 68G90	
								ILLINOIS FED. AID PROJECT	

MODEL: Default
FILE NAME: C:\common\GEN\Transfer - bureaus\68E46 - Final Plans\68E46 - Spoon River Rest Area



BILL OF MATERIALS		
I-74 EB SPOON RIVER REST AREA REMOVAL		
DESCRIPTION	UNIT	QTY.
REMOVE EXISTING LIGHTING SYSTEM	L SUM	0.5
REMOVE EXISTING CONCRETE FOUNDATION (PARTIAL REMOVAL IN ACCORDANCE WITH ARTICLE 895.05)	EACH	5.0

REMOVE EXISTING LIGHTING SYSTEM - QTY. 0.5 LUMP SUM (INCLUDES, BUT IS NOT LIMITED TO, ALL ITEMS LISTED BELOW)	
THE FOLLOWING ITEMS SHALL BE REMOVED AND DISPOSED OF BY THE CONTRACTOR OFF OF THE RIGHT-OF-WAY:	
I-74 EB SPOON RIVER REST AREA	
QTY.	ITEM
8.0	LIGHT POLE, WOOD
5.0	LIGHT POLE, METAL
23.0	HPS LUMINAIRE
ALL	EXISTING ELECTRICAL CABLING NOT USED IN PROP. INSTALLATION

LEGEND

- EXISTING UNIT DUCT
- EXISTING LIGHT POLE, GALVANIZED STEEL, 45 FT M.H. WITH EX. HPS LUMINAIRE, ON CONC. FOUNDATION

MODEL: Default
 FILE NAME: C:\Common\GEN\Transfer - Bureau\68G90 - Final Plans\68G90 - Final Plans (5-23-22).dgn

NOT TO SCALE

USER NAME = hansonj	DESIGNED -	REVISED - 5-23-22 TJH
	DRAWN -	REVISED -
PLOT SCALE = 84.9615' / in.	CHECKED -	REVISED -
PLOT DATE = 5/23/2022	DATE -	REVISED -

**STATE OF ILLINOIS
DEPARTMENT OF TRANSPORTATION**

**EXISTING LIGHTING PLANS & REMOVAL ITEMS
I-74 EB SPOON RIVER REST AREA - KNOX COUNTY**

SCALE: SHEET OF SHEETS STA. TO STA.

F.A.I. RTE.	SECTION	COUNTY	TOTAL SHEETS	SHEET NO.
74	D4 ELECTRICAL 2022-1	KNOX	27	15
ILLINOIS FED. AID PROJECT			CONTRACT NO. 68G90	



LEGEND

- EXISTING UNIT DUCT
- EXISTING LIGHT POLE, GALVANIZED STEEL, 30 FT M.H. WITH EX. LED LUMINAIRE X 2 , ON CONC. FOUNDATION
- EXISTING LIGHT POLE, WOOD, 45 FT M.H. WITH EXISTING HPS LUMINAIRE

NOTES:

1. THE EXISTING PEDESTRIAN WALKWAY LIGHTING AND TRUCK PARKING SYSTEM ARE NOT SHOWN IN THE PLANS.

MODEL: Default
 FILE NAME: C:\Common\GEN\Transfere--burba\68G90 - Final Plans\68G90 - Final Plans (4-1-22).dgn

USER NAME = hansonj	DESIGNED -	REVISED -
	DRAWN -	REVISED -
PLOT SCALE = 84.9615' +/- in.	CHECKED -	REVISED -
PLOT DATE = 4/3/2022	DATE -	REVISED -

STATE OF ILLINOIS
DEPARTMENT OF TRANSPORTATION

EXISTING LIGHTING PLANS & REMOVAL ITEMS - CONTINUED
I-74 EB SPOON RIVER REST AREA - KNOX COUNTY

SCALE: SHEET OF SHEETS STA. TO STA.

F.A.I. RTE.	SECTION	COUNTY	TOTAL SHEETS	SHEET NO.
74	D4 ELECTRICAL 2022-1	KNOX	27	16
ILLINOIS FED. AID PROJECT			CONTRACT NO. 68G90	

NOT TO SCALE

BILL OF MATERIALS		
I-74 EB SPOON RIVER REST AREA		
DESCRIPTION	UNIT	QTY.
UNIT DUCT, 600V, 2-1C NO.10, 1/C NO.10 GROUND, (XLP-TYPE USE), 3/4" DIA. POLYETHYLENE	FOOT	350.0
LUMINAIRE, LED, ROADWAY, OUTPUT DESIGNATION H	EACH	4.0
LUMINAIRE MOUNTING BRACKET - SPECIAL	EACH	4.0



LEGEND

- EXISTING UNIT DUCT
- EXISTING LIGHT POLE, GALVANIZED STEEL, 45 FT. (TO BE REMOVED)
- EXISTING LIGHT POLE, GALVANIZED STEEL, 45 FT WITH PROPOSED LED LUMINAIRE
- - - - PROPOSED UNIT DUCT, 600V, 2-1C NO. 10, 1/C NO. 10 GROUND (XLP-TYPE USE) 3/4" DIA. POLYETHYLENE

NOTES:

1. THE CONTRACTOR SHALL FURNISH AND INSTALL THE PROPOSED UNIT DUCT BETWEEN THE EXISTING LIGHT POLES 4 AND 5, SPLICING IT INTO THE EXISTING LIGHTING CIRCUIT USING WATERPROOF SPLICES IN THE BASES OF LIGHT POLES 4 AND 5. THIS WORK SHALL BE INCLUDED IN THE COST OF THE PROPOSED UNIT DUCT.

NOT TO SCALE

MODEL: Default
FILE NAME: C:\Common\GEN\Transfer-- Bureau\68G90 - Final Plans\68G90 - Final Plans (5-23-22).dgn

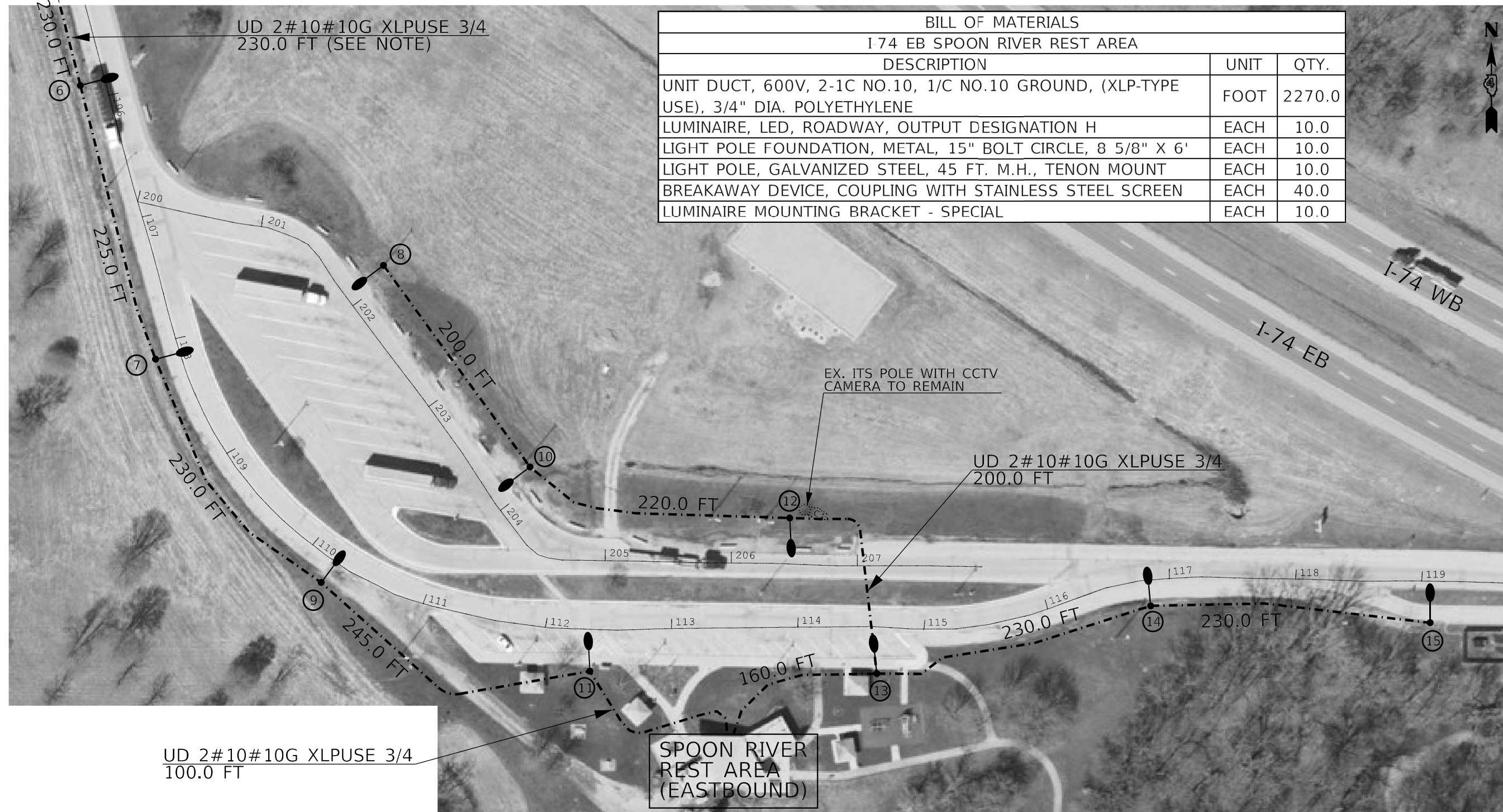
USER NAME = hansonj	DESIGNED -	REVISED -	5-23-22 TJH
PLOT SCALE = 84.9615 * / in.	DRAWN -	REVISED -	
PLOT DATE = 5/23/2022	CHECKED -	REVISED -	
	DATE -	REVISED -	

**STATE OF ILLINOIS
DEPARTMENT OF TRANSPORTATION**

PROPOSED LIGHTING PLANS			
I-74 EB SPOON RIVER REST AREA - KNOX COUNTY			
SCALE:	SHEET	OF SHEETS	STA. TO STA.

F.A.I. RTE.	SECTION	COUNTY	TOTAL SHEETS	SHEET NO.
74	D4 ELECTRICAL 2022-1	KNOX	27	17
ILLINOIS FED. AID PROJECT			CONTRACT NO. 68G90	

TO POLE 5



BILL OF MATERIALS		
I 74 EB SPOON RIVER REST AREA		
DESCRIPTION	UNIT	QTY.
UNIT DUCT, 600V, 2-1C NO.10, 1/C NO.10 GROUND, (XLP-TYPE USE), 3/4" DIA. POLYETHYLENE	FOOT	2270.0
LUMINAIRE, LED, ROADWAY, OUTPUT DESIGNATION H	EACH	10.0
LIGHT POLE FOUNDATION, METAL, 15" BOLT CIRCLE, 8 5/8" X 6'	EACH	10.0
LIGHT POLE, GALVANIZED STEEL, 45 FT. M.H., TENON MOUNT	EACH	10.0
BREAKAWAY DEVICE, COUPLING WITH STAINLESS STEEL SCREEN	EACH	40.0
LUMINAIRE MOUNTING BRACKET - SPECIAL	EACH	10.0



UD 2#10#10G XLPUSE 3/4
100.0 FT

LEGEND

- PROPOSED LIGHTING UNIT, WITH LUMINAIRE, LED, ROADWAY, OUTPUT DESIGNATION H. ON GALVANIZED STEEL POLE, TENON TOP WITH BRACKET WITH 1 FT ARM, 45 FT M.H., ON BREAKAWAY COUPLING WITH STAINLESS STEEL SCREEN
- PROPOSED UNIT DUCT, 600V, 2-1C NO. 10, 1/C NO. 10 GROUND (XLP-TYPE USE) 3/4" DIA. POLYETHYLENE

NOTES:

1. THE CONTRACTOR SHALL FURNISH AND INSTALL THE PROPOSED UNIT DUCT BETWEEN THE EXISTING LIGHT POLE 5 AND THE PROPOSED LIGHT POLE 6, SPLICING IT INTO THE EXISTING LIGHTING CIRCUIT USING WATERPROOF SPLICES IN THE BASE OF LIGHT POLE 5. THIS WORK SHALL BE INCLUDED IN THE COST OF THE PROPOSED UNIT DUCT.
2. THE CONTRACTOR SHALL DETERMINE THE BEST METHOD OF INSTALLING THE PROPOSED UNIT DUCT INTO THE REST AREA BASEMENT (LOCATION OF EXISTING LIGHTING CONTROLLER.) THE CONTRACTOR SHALL VERIFY METHOD OF ENTRANCE AND RODENT PREVENTION WITH THE ENGINEER PRIOR TO ORDERING MATERIALS. THE CONTRACTOR SHALL FURNISH AND INSTALL ALL MATERIALS REQUIRED TO COMPLETE THIS WORK, INCLUDING, BUT NOT LIMITED TO CONDUIT ATTACHED TO STRUCTURE, MOUNTING HARDWARE, EPOXY, ETC. THIS WORK WILL NOT BE PAID FOR SEPARATELY, BUT SHALL BE INCLUDED IN THE COST OF THE UNIT DUCT.
3. THE EXISTING PEDESTRIAN WALKWAY LIGHTING AND TRUCK PARKING SYSTEM ARE NOT SHOWN IN THE PLANS.

NOT TO SCALE

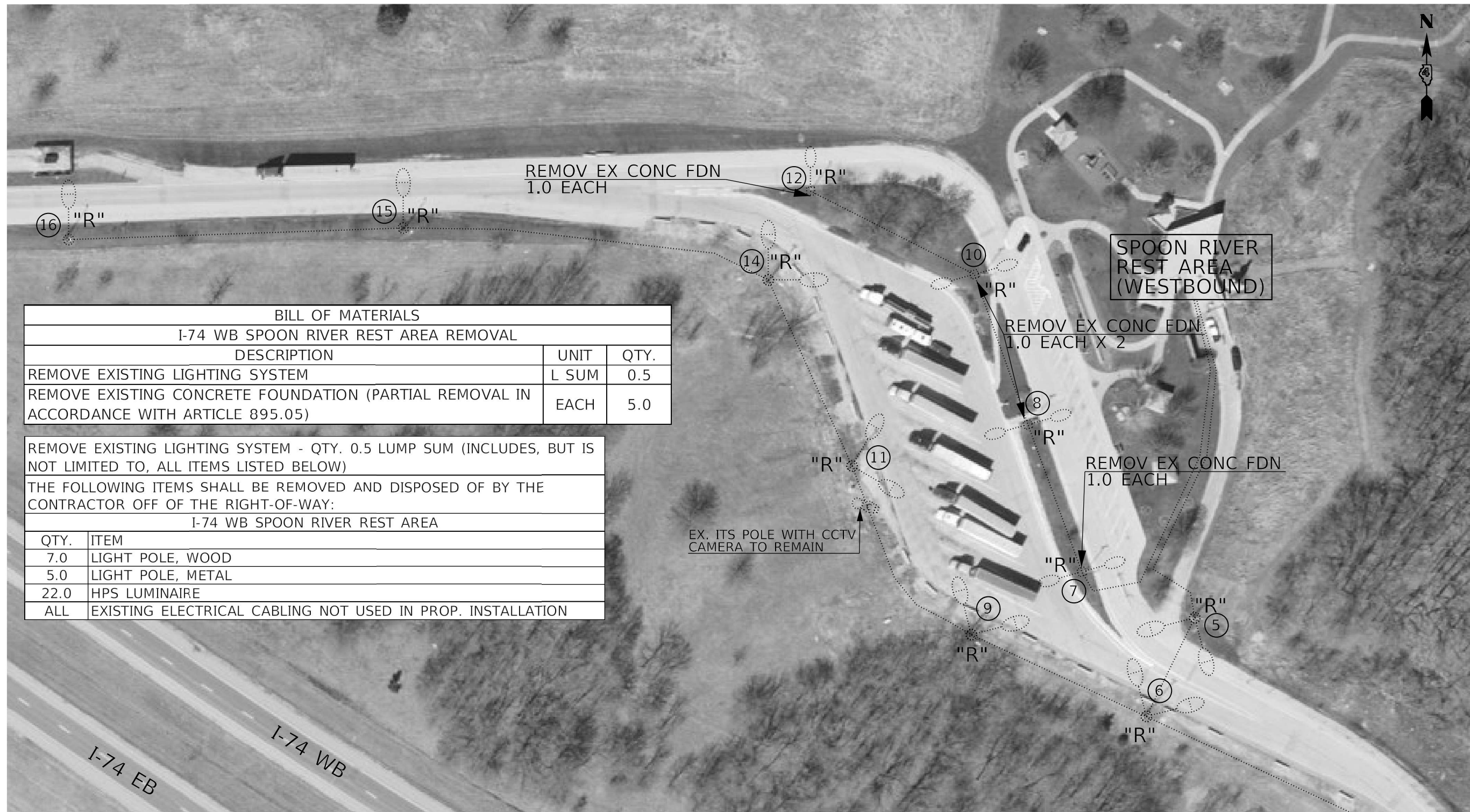
MODEL: Default
FILE NAME: C:\Common\GEN\Transfer--buras\68G90 - Final\Plan\68G90 - Final.dwg
DATE: 4/12/2022

USER NAME = hansonj	DESIGNED -	REVISED -
PLOT SCALE = 84.9615' / in.	DRAWN -	REVISED -
PLOT DATE = 4/3/2022	CHECKED -	REVISED -
	DATE -	REVISED -

STATE OF ILLINOIS
DEPARTMENT OF TRANSPORTATION

PROPOSED LIGHTING PLANS - CONTINUED			
I-74 EB SPOON RIVER REST AREA - KNOX COUNTY			
SCALE:	SHEET	OF SHEETS	STA. TO STA.

F.A.I. RTE.	SECTION	COUNTY	TOTAL SHEETS	SHEET NO.
74	D4 ELECTRICAL 2022-1	KNOX	27	18
CONTRACT NO. 68G90				
ILLINOIS FED. AID PROJECT				



BILL OF MATERIALS		
I-74 WB SPOON RIVER REST AREA REMOVAL		
DESCRIPTION	UNIT	QTY.
REMOVE EXISTING LIGHTING SYSTEM	L SUM	0.5
REMOVE EXISTING CONCRETE FOUNDATION (PARTIAL REMOVAL IN ACCORDANCE WITH ARTICLE 895.05)	EACH	5.0

REMOVE EXISTING LIGHTING SYSTEM - QTY. 0.5 LUMP SUM (INCLUDES, BUT IS NOT LIMITED TO, ALL ITEMS LISTED BELOW)

THE FOLLOWING ITEMS SHALL BE REMOVED AND DISPOSED OF BY THE CONTRACTOR OFF OF THE RIGHT-OF-WAY:

I-74 WB SPOON RIVER REST AREA	
QTY.	ITEM
7.0	LIGHT POLE, WOOD
5.0	LIGHT POLE, METAL
22.0	HPS LUMINAIRE
ALL	EXISTING ELECTRICAL CABLING NOT USED IN PROP. INSTALLATION

LEGEND

- EXISTING UNIT DUCT
- EXISTING LIGHT POLE, GALVANIZED STEEL, 30 FT M.H. WITH EX. LED LUMINAIRE X 2, ON CONC. FOUNDATION
- EXISTING LIGHT POLE, WOOD, 45 FT M.H. WITH EXISTING HPS LUMINAIRE

NOTES:

- THE EXISTING PEDESTRIAN WALKWAY LIGHTING AND TRUCK PARKING SYSTEM ARE NOT SHOWN IN THE PLANS.

NOT TO SCALE

MODEL: Default
FILE NAME: C:\Common\GEN\Transfer\..._buraua\86G90 - Final Plans\86G90 - Final Plans (5-23-22).dgn

USER NAME = hansonj	DESIGNED -	REVISED - 5-23-22 TJH
	DRAWN -	REVISED -
PLOT SCALE = 84,9615' = 1" / ft.	CHECKED -	REVISED -
PLOT DATE = 5/23/2022	DATE -	REVISED -

**STATE OF ILLINOIS
DEPARTMENT OF TRANSPORTATION**

**EXISTING LIGHTING PLANS & REMOVAL ITEMS
I-74 WB SPOON RIVER REST AREA - KNOX COUNTY**

SCALE: SHEET OF SHEETS STA. TO STA.

F.A.I. RTE.	SECTION	COUNTY	TOTAL SHEETS	SHEET NO.
74	D4 ELECTRICAL 2022-1	KNOX	27	19
ILLINOIS FED. AID PROJECT			CONTRACT NO. 68G90	



LEGEND

- EXISTING UNIT DUCT
- EXISTING LIGHT POLE, GALVANIZED STEEL, 45 FT M.H. WITH EX. HPS LUMINAIRE, ON CONC. FOUNDATION

MODEL Path: \\...
 FILE NAME: C:\Common\GEN\Transfer - buraua\68G90 - Final Plans\68G90 - Final Plans (5-23-22).dgn

USER NAME = hansonj	DESIGNED -	REVISED - 5-23-22 TJH
	DRAWN -	REVISED -
PLOT SCALE = 84.9615 * / in.	CHECKED -	REVISED -
PLOT DATE = 5/23/2022	DATE -	REVISED -

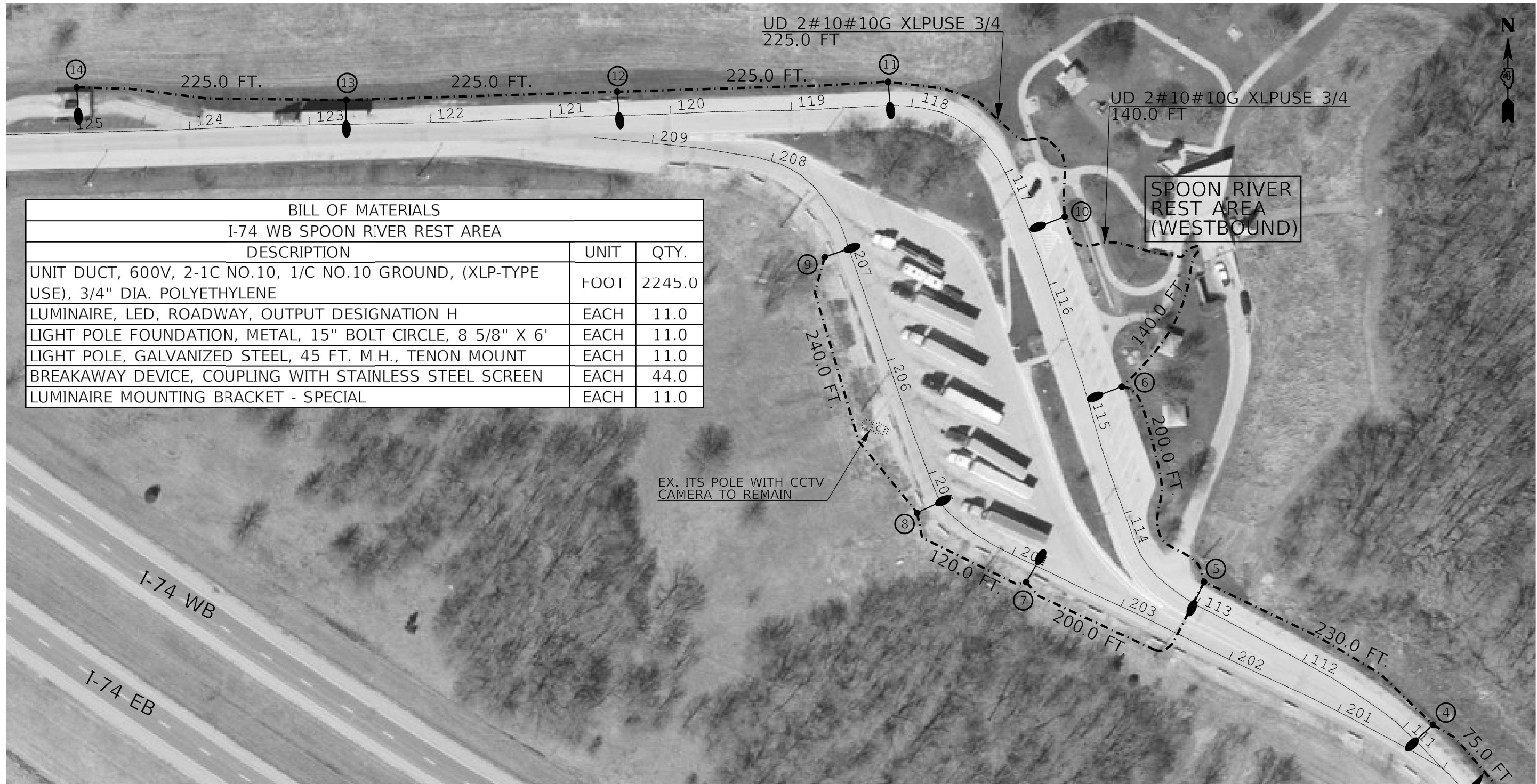
STATE OF ILLINOIS
DEPARTMENT OF TRANSPORTATION

EXISTING LIGHTING PLANS & REMOVAL ITEMS – CONTINUED
I-74 WB SPOON RIVER REST AREA – KNOX COUNTY

SCALE: SHEET OF SHEETS STA. TO STA.

NOT TO SCALE

F.A.I. RTE.	SECTION	COUNTY	TOTAL SHEETS	SHEET NO.
74	D4 ELECTRICAL 2022-1	KNOX	27	20
			CONTRACT NO. 68G90	
		ILLINOIS	FED. AID PROJECT	



BILL OF MATERIALS			
I-74 WB SPOON RIVER REST AREA			
DESCRIPTION	UNIT	QTY.	
UNIT DUCT, 600V, 2-1C NO.10, 1/C NO.10 GROUND, (XLP-TYPE USE), 3/4" DIA. POLYETHYLENE	FOOT	2245.0	
LUMINAIRE, LED, ROADWAY, OUTPUT DESIGNATION H	EACH	11.0	
LIGHT POLE FOUNDATION, METAL, 15" BOLT CIRCLE, 8 5/8" X 6'	EACH	11.0	
LIGHT POLE, GALVANIZED STEEL, 45 FT. M.H., TENON MOUNT	EACH	11.0	
BREAKAWAY DEVICE, COUPLING WITH STAINLESS STEEL SCREEN	EACH	44.0	
LUMINAIRE MOUNTING BRACKET - SPECIAL	EACH	11.0	

NOTES:

1. THE CONTRACTOR SHALL DETERMINE THE BEST METHOD OF INSTALLING THE PROPOSED UNIT DUCT INTO THE REST AREA BASEMENT (LOCATION OF EXISTING LIGHTING CONTROLLER.) THE CONTRACTOR SHALL VERIFY METHOD OF ENTRANCE AND RODENT PREVENTION WITH THE ENGINEER PRIOR TO ORDERING MATERIALS. THE CONTRACTOR SHALL FURNISH AND INSTALL ALL MATERIALS REQUIRED TO COMPLETE THIS WORK, INCLUDING, BUT NOT LIMITED TO CONDUIT ATTACHED TO STRUCTURE, MOUNTING HARDWARE, EPOXY, ETC. THIS WORK WILL NOT BE PAID FOR SEPARATELY, BUT SHALL BE INCLUDED IN THE COST OF THE UNIT DUCT.
2. THE EXISTING PEDESTRIAN WALKWAY LIGHTING AND TRUCK PARKING SYSTEM ARE NOT SHOWN IN THE PLANS.

LEGEND



PROPOSED LIGHTING UNIT, WITH LUMINAIRE, LED, ROADWAY, OUTPUT DESIGNATION H. ON GALVANIZED STEEL POLE, TENON TOP WITH BRACKET WITH 1 FT ARM, 45 FT M.H., ON BREAKAWAY COUPLING WITH STAINLESS STEEL SCREEN



PROPOSED UNIT DUCT, 600V, 2-1C NO. 10, 1/C NO. 10 GROUND (XLP-TYPE USE) 3/4" DIA. POLYETHYLENE

UD 2#10#10G XLPULSE 3/4
75.0 FT

TO POLE 3

NOT TO SCALE

MODEL: Default
FILE NAME: C:\Common\GEN\Transfer - Bureau\68G90 - Final Plans\68G90 - Final Plans (5-23-22).dgn

USER NAME = hansonj	DESIGNED -	REVISED - 5-23-22 TJH
PLOT SCALE = 84.9615' / in.	DRAWN -	REVISED -
PLOT DATE = 5/23/2022	CHECKED -	REVISED -
	DATE -	REVISED -

**STATE OF ILLINOIS
DEPARTMENT OF TRANSPORTATION**

**PROPOSED LIGHTING PLANS
I-74 WB SPOON RIVER REST AREA - KNOX COUNTY**

SCALE: SHEET OF SHEETS STA. TO STA.

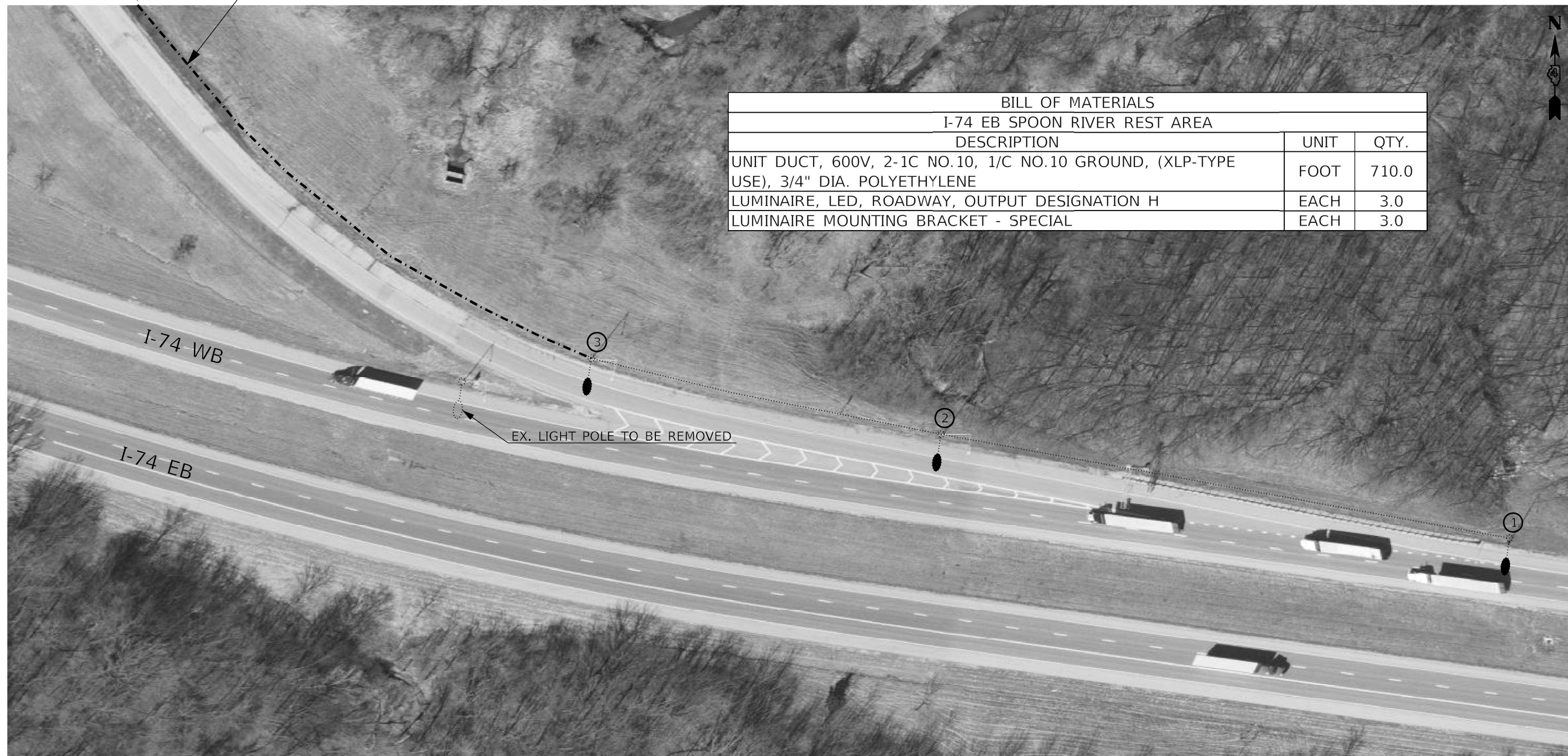
F.A.I. RTE.	SECTION	COUNTY	TOTAL SHEETS	SHEET NO.
74	D4 ELECTRICAL 2022-1	KNOX	27	21
ILLINOIS FED. AID PROJECT			CONTRACT NO. 68G90	

LEGEND

- EXISTING UNIT DUCT
- EXISTING LIGHT POLE, GALVANIZED STEEL, 45 FT. (TO BE REMOVED)
- EXISTING LIGHT POLE, GALVANIZED STEEL, 45 FT WITH PROPOSED LED LUMINAIRE
- ... PROPOSED UNIT DUCT, 600V, 2-1C NO. 10, 1/C NO. 10 GROUND (XLP-TYPE USE) 3/4" DIA. POLYETHYLENE

TO POLE 4

UD 2#10#10G XLPUSE 3/4
710.0 FT (SEE NOTE)



BILL OF MATERIALS		
I-74 EB SPOON RIVER REST AREA		
DESCRIPTION	UNIT	QTY.
UNIT DUCT, 600V, 2-1C NO.10, 1/C NO.10 GROUND, (XLP-TYPE USE), 3/4" DIA. POLYETHYLENE	FOOT	710.0
LUMINAIRE, LED, ROADWAY, OUTPUT DESIGNATION H	EACH	3.0
LUMINAIRE MOUNTING BRACKET - SPECIAL	EACH	3.0

NOTES:

1. THE CONTRACTOR SHALL FURNISH AND INSTALL THE PROPOSED UNIT DUCT BETWEEN THE PROPOSED LIGHT POLE 4 AND THE EXISTING LIGHT POLE 3, SPLICING IT INTO THE EXISTING LIGHTING CIRCUIT USING A WATERPROOF SPLICE IN THE BASE OF LIGHT POLE 3. THIS WORK SHALL BE INCLUDED IN THE COST OF THE PROPOSED UNIT DUCT.

MODEL Default
FILE NAME: C:\Common\GEN\Transfer - Bureau\68G90 - Final Plans\68G90 - Final Plans (5-23-22).dgn

USER NAME = hansontj	DESIGNED -	REVISED - 5-23-22 TJH
PLOT SCALE = 84.9615 * / in.	DRAWN -	REVISED -
PLOT DATE = 5/23/2022	CHECKED -	REVISED -
	DATE -	REVISED -

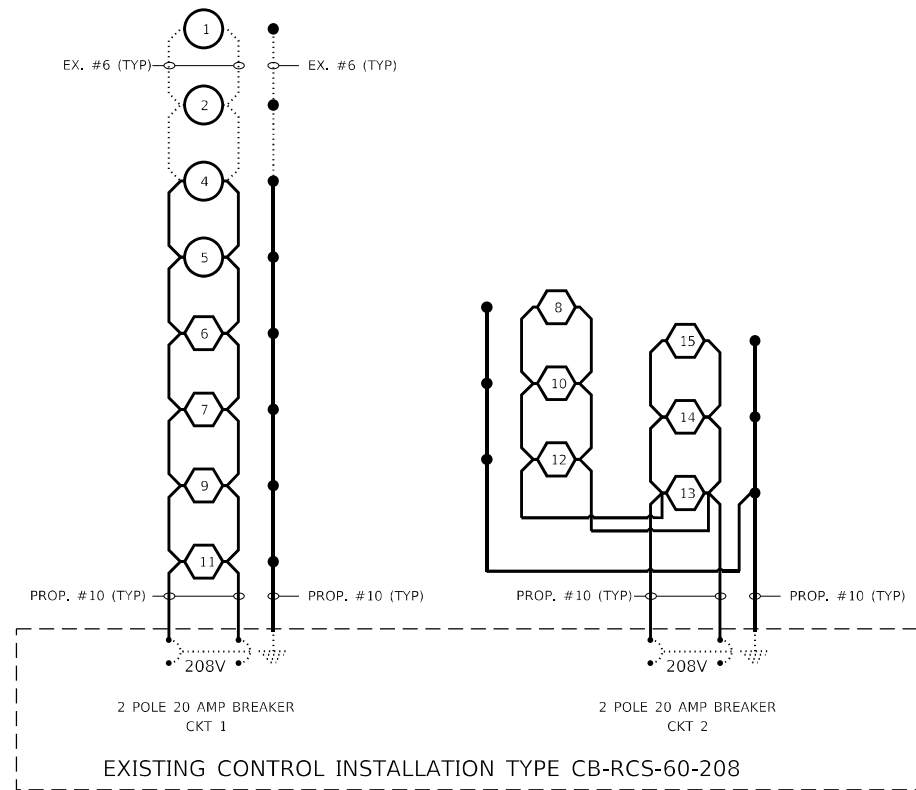
**STATE OF ILLINOIS
DEPARTMENT OF TRANSPORTATION**

**PROPOSED LIGHTING PLANS - CONTINUED
I-74 WB SPOON RIVER REST AREA - KNOX COUNTY**

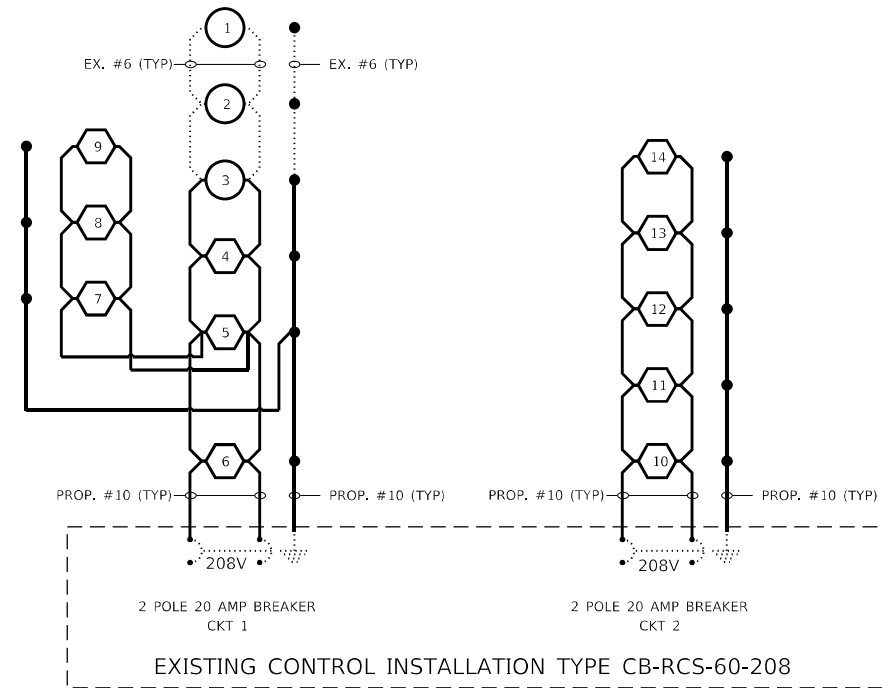
SCALE: SHEET OF SHEETS STA. TO STA.

F.A.I. RTE.	SECTION	COUNTY	TOTAL SHEETS	SHEET NO.
74	D4 ELECTRICAL 2022-1	KNOX	27	22
ILLINOIS FED. AID PROJECT			CONTRACT NO. 68G90	

NOT TO SCALE



**SPOON RIVER REST AREA
EAST BOUND**



**SPOON RIVER REST AREA
WEST BOUND**

NOTES:

1. ALL NECESSARY REVISIONS TO THE WIRING SHOWN ON THIS SHEET SHALL BE MADE AT NO ADDITIONAL COST TO THE DEPARTMENT AND TO THE SATISFACTION OF THE ENGINEER.
2. THE EXISTING UNIT DUCT SHALL BE SPLICED TO THE PROPOSED UNIT DUCT AS SHOWN IN THE IN PLANS. ALL SPLICES SHALL BE WATERPROOF AND LOCATED IN THE BASE OF THE LIGHT POLE.



PROPOSED LED LUMINAIRE ON PROPOSED LIGHT POLE



PROPOSED LED LUMINAIRE ON EXISTING LIGHT POLE



EXISTING GROUND ROD

MODEL: Default
 FILE NAME: C:\Common\GEN\Transfer--buraua\68G90--Final\Plans\68G90--Final\Plans (5-23-22).dgn

USER NAME = hansonj	DESIGNED -	REVISED - 5-23-22 TJH
	DRAWN -	REVISED -
PLOT SCALE = 84.9615 * / in.	CHECKED -	REVISED -
PLOT DATE = 5/23/2022	DATE -	REVISED -

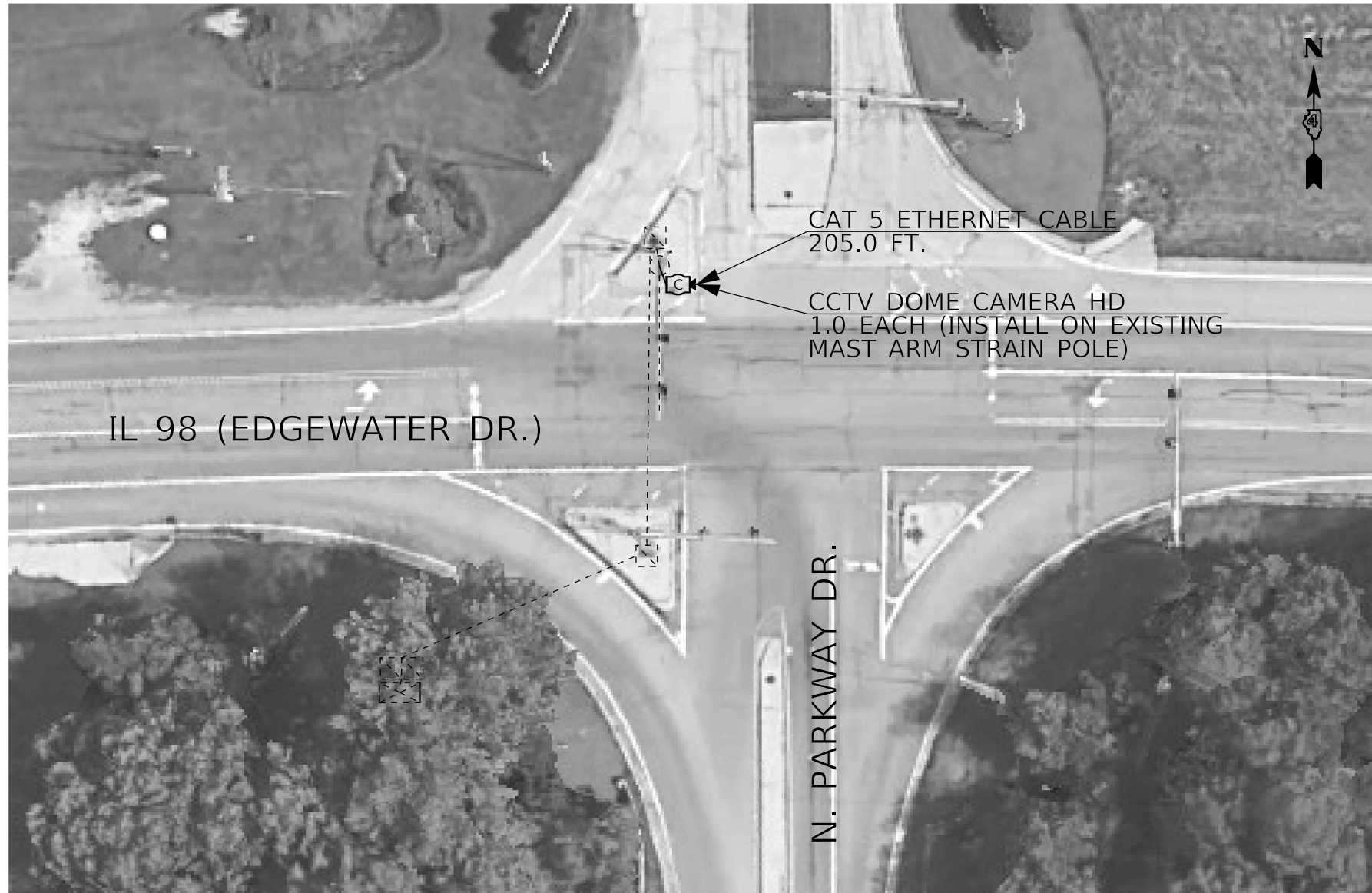
**STATE OF ILLINOIS
DEPARTMENT OF TRANSPORTATION**

**PROPOSED LIGHTING CIRCUIT DIAGRAM
I-74 EB & WB SPOON RIVER REST AREAS - KNOX COUNTY**

SCALE: SHEET OF SHEETS STA. TO STA.

F.A.I. RTE.	SECTION	COUNTY	TOTAL SHEETS	SHEET NO.
74	D4 ELECTRICAL 2022-1	KNOX	27	23
ILLINOIS FED. AID PROJECT			CONTRACT NO. 68G90	

NOT TO SCALE



BILL OF MATERIALS		
IL 98 (EDGEWATER DR.) & N. PARKWAY DR.		
DESCRIPTION	UNIT	QTY.
CLOSED CIRCUIT TELEVISION DOME CAMERA, HD	EACH	1.0
CAT 5 ETHERNET CABLE	FOOT	205.0

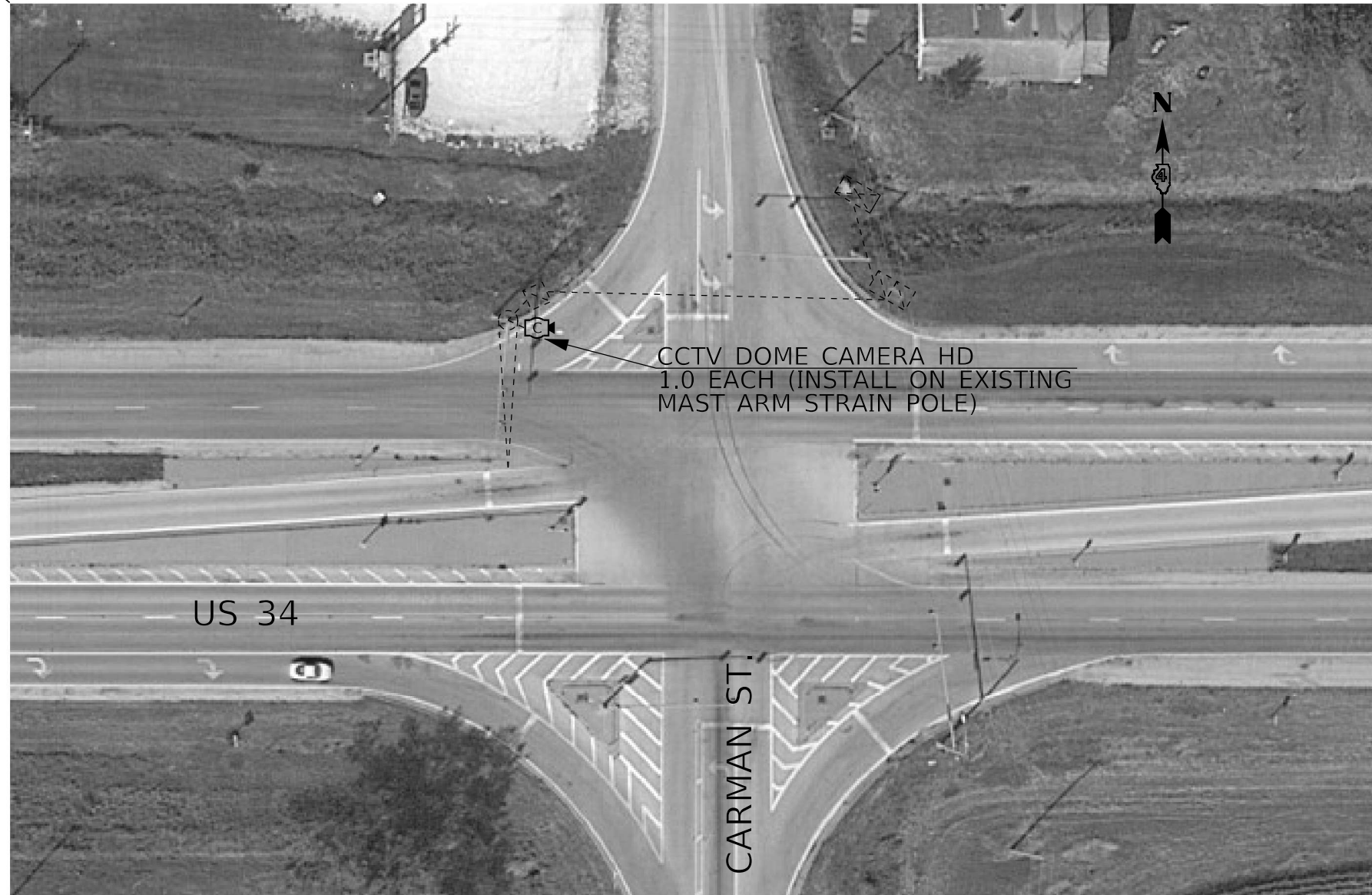
NOTES:

1. THE CONTRACTOR SHALL INSTALL THE PROPOSED CCTV CAMERA ON THE MAST ARM STRAIN POLE IN THE NORTHWEST QUADRANT AT THE MAXIMUM POSSIBLE MOUNTING HEIGHT (APPROXIMATELY 20 FT.)
2. THE CONTRACTOR SHALL FURNISH AND INSTALL A CAMERA MOUNTING BRACKET AND ALL REQUIRED HARDWARE. THIS WORK WILL NOT BE PAID FOR SEPARATELY, BUT SHALL BE INCLUDED IN THE BID PRICE FOR THE CCTV CAMERA.
3. THE PROPOSED CCTV POWER SUPPLY SHALL BE INSTALLED IN THE EXISTING TRAFFIC SIGNAL CABINET.
4. THE CONTRACTOR SHALL INSTALL THE CAMERA AT A 45 DEGREE ANGLE OR AS REQUIRED TO PROVIDE AN ADEQUATE VIEW OF ALL FOUR APPROACHES.

MODEL: Default
 FILE NAME: C:\Common\GEN\Transfer - Bureau\68G90 - Final Plans\68G90 - Final Plans (4-1-22).dgn

NOT TO SCALE

USER NAME = hansonj PLOT SCALE = 84,9615 * / in. PLOT DATE = 4/1/2022	DESIGNED - DRAWN - CHECKED - DATE -	REVISED - REVISED - REVISED - REVISED -	STATE OF ILLINOIS DEPARTMENT OF TRANSPORTATION	PROPOSED CCTV CAMERA INSTALLATION IL 98 (EDGEWATER DR.) & N. PARKWAY DR. - NORTH PEKIN	F.A.I. RTE. VAR.	SECTION D4 ELECTRICAL 2022-1	COUNTY TAZEWELL	TOTAL SHEETS 27	SHEET NO. 24	CONTRACT NO. 68G90 ILLINOIS FED. AID PROJECT
SCALE:				SHEET OF SHEETS	STA. TO STA.					



CCTV DOME CAMERA HD
1.0 EACH (INSTALL ON EXISTING
MAST ARM STRAIN POLE)

BILL OF MATERIALS		
US 34 & CARMAN ST.		
DESCRIPTION	UNIT	QTY.
CLOSED CIRCUIT TELEVISION DOME CAMERA, HD	EACH	1.0

NOTES:

1. THE CONTRACTOR SHALL INSTALL THE PROPOSED CCTV CAMERA ON THE MAST ARM STRAIN POLE IN THE NORTHWEST QUADRANT AT A MOUNTING HEIGHT OF 43 FT.
2. THE EXISTING CAT5 ETHERNET CABLE SHALL BE RE-USED WITH THE PROPOSED CCTV CAMERA.
3. THE CONTRACTOR SHALL INSTALL THE CAMERA AT A 45 DEGREE ANGLE OR AS REQUIRED TO PROVIDE AN ADEQUATE VIEW OF ALL FOUR APPROACHES.

MODEL: Default
 FILE NAME: C:\Common\GEN\Transfer - Bureau\68G90 - Final Plans\68G90 - Final Plans (4-1-22).dgn

NOT TO SCALE

USER NAME = hansonj	DESIGNED -	REVISED -
	DRAWN -	REVISED -
PLOT SCALE = 84.9615 * / in.	CHECKED -	REVISED -
PLOT DATE = 4/1/2022	DATE -	REVISED -

**STATE OF ILLINOIS
DEPARTMENT OF TRANSPORTATION**

**PROPOSED CCTV CAMERA INSTALLATION
US 34 & CARMAN ST. - HENDERSON COUNTY**

SCALE: SHEET OF SHEETS STA. TO STA.

F.A.I. RTE.	SECTION	COUNTY	TOTAL SHEETS	SHEET NO.
VAR.	D4 ELECTRICAL 2022-1	HENDERSON	27	25
			CONTRACT NO. 68G90	
		ILLINOIS FED. AID PROJECT		



BILL OF MATERIALS		
US 150 (WAR MEMORIAL DR.) & GRAND AVE.		
DESCRIPTION	UNIT	QTY.
CLOSED CIRCUIT TELEVISION DOME CAMERA, HD	EACH	1.0

NOTES:

1. THE CONTRACTOR SHALL INSTALL THE PROPOSED CCTV CAMERA ON THE MAST ARM STRAIN POLE IN THE NORTHWEST QUADRANT AT A MOUNTING HEIGHT OF 43 FT.
2. THE EXISTING CAT5 ETHERNET CABLE SHALL BE RE-USED WITH THE PROPOSED CCTV CAMERA.
3. THE CONTRACTOR SHALL ROTATE THE EXISTING CAMERA BRACKET TO PROVIDE AN OPTIMAL VIEW OF BOTH THE EB AND WB US 150 (WAR MEMORIAL DR.) APPROACHES AND THE GRAND AVE. SB APPROACH. THE COST OF THIS WORK SHALL BE INCLUDED IN THE COST OF THE PROPOSED CCTV CAMERA.

MODEL: Default
 FILE NAME: C:\Common\GEN\Transfer - Bureau\68G90 - Final Plans\68G90 - Final Plans (4-1-22).dgn

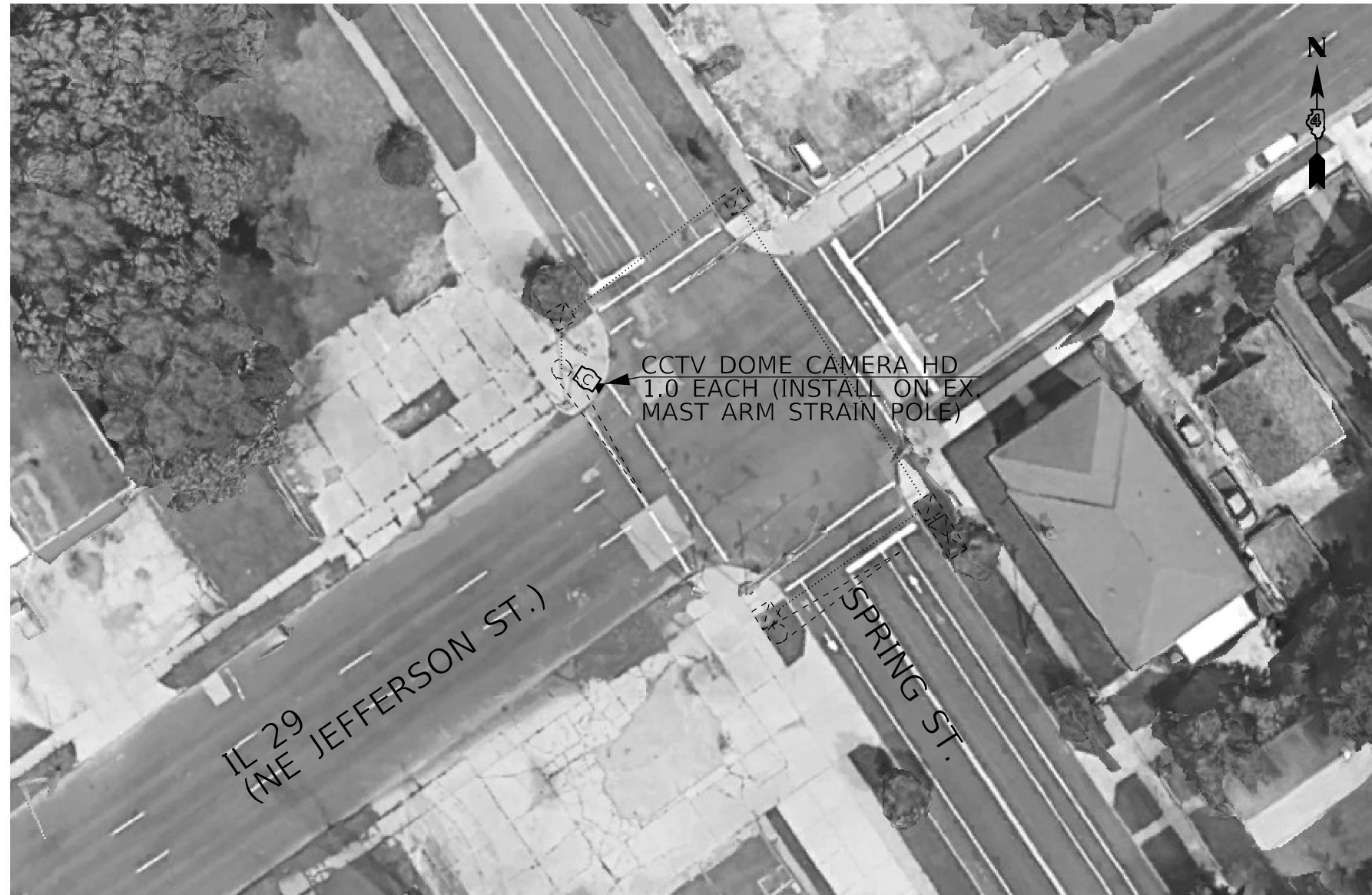
NOT TO SCALE

USER NAME = hansonj	DESIGNED -	REVISED -
	DRAWN -	REVISED -
PLOT SCALE = 84,9615 * / in.	CHECKED -	REVISED -
PLOT DATE = 4/1/2022	DATE -	REVISED -

STATE OF ILLINOIS
DEPARTMENT OF TRANSPORTATION

PROPOSED CCTV CAMERA INSTALLATION US 150 (WAR MEMORIAL DR.) & GRAND AVE. - PEORIA			
SCALE:	SHEET	OF SHEETS	STA. TO STA.

F.A.I. RTE.	SECTION	COUNTY	TOTAL SHEETS	SHEET NO.
VAR.	D4 ELECTRICAL 2022-1	PEORIA	27	26
			CONTRACT NO. 68G90	
		ILLINOIS	FED. AID PROJECT	



BILL OF MATERIALS		
IL 29 (NE JEFFERSON ST.) & SPRING ST.		
DESCRIPTION	UNIT	QTY.
CLOSED CIRCUIT TELEVISION DOME CAMERA, HD	EACH	1.0
CAT 5 ETHERNET CABLE	FOOT	228.0

NOTES:

1. THE CONTRACTOR SHALL INSTALL THE PROPOSED CCTV CAMERA ON THE MAST ARM STRAIN POLE IN THE SOUTHWEST QUADRANT AT THE MAXIMUM POSSIBLE MOUNTING HEIGHT (APPROXIMATELY 20 FT.)
2. THE CONTRACTOR SHALL FURNISH AND INSTALL A CAMERA MOUNTING BRACKET AND ALL REQUIRED HARDWARE. THIS WORK WILL NOT BE PAID FOR SEPARATELY, BUT SHALL BE INCLUDED IN THE BID PRICE FOR THE CCTV CAMERA.
3. THE PROPOSED CCTV POWER SUPPLY SHALL BE INSTALLED IN THE EXISTING TRAFFIC SIGNAL CABINET.
4. THE CONTRACTOR SHALL INSTALL THE CAMERA AT A 45 DEGREE ANGLE OR AS REQUIRED TO PROVIDE AN ADEQUATE VIEW OF ALL FOUR APPROACHES.

MODEL: Default
 FILE NAME: C:\Common\GEN\Transfer - Bureau\68G90 - Final Plans\68G90 - Final Plans (4-1-22).dgn

NOT TO SCALE

USER NAME = hansonj	DESIGNED -	REVISED -
	DRAWN -	REVISED -
PLOT SCALE = 84.9615 */ in.	CHECKED -	REVISED -
PLOT DATE = 4/1/2022	DATE -	REVISED -

STATE OF ILLINOIS
DEPARTMENT OF TRANSPORTATION

PROPOSED CCTV CAMERA INSTALLATION IL 29 (SE JEFFERSON ST.) & SPRING ST. - PEORIA			
SCALE:	SHEET	OF	SHEETS
	STA.	TO	STA.

F.A.I. RTE.	SECTION	COUNTY	TOTAL SHEETS	SHEET NO.
VAR.	D4 ELECTRICAL 2022-1	PEORIA	27	27
			CONTRACT NO. 68G90	
		ILLINOIS	FED. AID PROJECT	