

INDEX OF SHEETS

SHT NO.	DESCRIPTION
1	COVER SHEET
2	INDEX OF SHEETS & LIST OF STANDARDS
3 - 5	GENERAL NOTES, COMMITMENTS
* 6 - 23	SUMMARY OF QUANTITIES
24 - 71	SCHEDULE OF QUANTITIES
72 - 79	TYPICAL CROSS SECTIONS
80-89	ALIGNMENT, TIES & BENCHMARK
90 - 124	PLAN & PROFILE SHEETS (MAINLINE I-70)
125 - 132	PLAN & PROFILE SHEETS (MONTROSE INTERCHANGE RAMPS)
133 - 135	PLAN VIEWS (OVERHEAD ROADWAYS - 1800th, 1950th & 2100th Streets)
136 - 169	REMOVAL PLANS
170	RUBBLIZATION DETAILS OVER SHALLOW CULVERTS
171	STAGE CONSTRUCTION TYPICAL CROSS SECTIONS
172 - 175	PRE-STAGE 1 TC&P LAYOUT DETAILS FOR I-70
176	MEDIAN CROSSOVER CLOSURE DETAILS (TEMP & PERM)
177 - 179	STAGE 1 DETOUR PLANS (DURING CLOSURE OF SOUTH HALF OF MONTROSE INTERCHANGE)
180 - 195	STAGE 1 TC&P LAYOUT DETAILS FOR I-70
196 - 198	STAGE 2 DETOUR PLANS (DURING CLOSURE OF SOUTH HALF OF MONTROSE INTERCHANGE)
199 - 215	STAGE 2 TC&P LAYOUT DETAILS FOR I-70
216	MEDIAN CROSSOVER TYPICAL SECTIONS
217 - 228	WEST MEDIAN CROSS-OVER DETAILS
229 - 239	EAST MEDIAN CROSS-OVER DETAILS
240 - 245	LIGHTING DETAILS FOR WEST MEDIAN CROSS-OVERS
246 - 253	INTERCHANGE RAMP TERMINAL LAYOUT & ELEVATION DETAILS
254	INTERCHANGE RAMP DIECTIONAL ARROW PAVEMENT MARKING DETAILS
255	INTERCHANGE RAMP TERMINAL/GORE AREA PAVEMENT MARKING DETAILS
256- 257	SUPERELEVATION DETAILS
258 - 295	BRIDGE DETAILS (DUAL STRUCTURES AT MONTROSE INTERCHANGE, SN 025-0016 EB; 0017 WB; STA 2741+37.68)
296 - 313	BRIDGE REPAIR DETAILS (OVERHEADS BRIDGE; SN 025-0064; 0051; 0052 - 1800th, 1950th & 2100th Streets)"
314 - 315	PIPE CULVERT HEADWALL VERTICAL EXTENSION DETAILS (SN 025-8814; STA 2429+80, 72" RCCP)
316 - 322	TRIPLE BOX CULVERT REPAIR DETAILS (SN 025-2006; STA 2448+75; 11' X 11', 11' X 14', 11' X 11')
323 - 325	BOX CULVERT HEADWALL HORIZONTAL EXTENSION DETAILS (SN 025-8700; STA 2498+60; 6' X 3')
326 - 328	BOX CULVERT HEADWALL HORIZONTAL EXTENSION DETAILS (SN 025-8701; STA 2541+20; 10' X 7')
329 - 331	BOX CULVERT HEADWALL HORIZONTAL EXTENSION DETAILS (SN 025-8703; STA 2566+10; 7' X 3')
332 - 333	BOX CULVERT HEADWALL HORIZONTAL EXTENSION DETAILS (SN 025-8705; STA 2620+32; 10' X 3')
334 - 340	BOX CULVERT REPLACEMENT DETAILS (EX SN 025-8706; PR SN 025-8305; STA 2640+20)
341 - 342	STRUCTURE BORINGS (EX SN 025-8706; PR SN 025-8305; STA 2640+20)
343 - 345	SMALL CULVERT EXTENSION & REPAIR DETAILS
346 - 351	SIGN PANEL DETAILS
352 - 353	SIGN SUPPORT DETAILS
354 - 388	EROSION CONTROL/SWPPP
389 - 410	MISCELLANEOUS DETAILS
411 - 442	CULVERT PROFILES (MAINLINE)
443 - 772	CROSS SECTIONS (MAINLINE)
773 - 790	CROSS SECTIONS (INTERCHANGE RAMPS)
790	TOTAL

\* SHEETS 22 AND 23 DELETED (788 TOTAL SHEETS)

LIST OF HIGHWAY STANDARD DRAWINGS

STD NO.	DESCRIPTION
000001-08	Standard Symbols, Abbreviations and Patterns
001001-02	Areas of Reinforcement Bars
001006	Decimal of an Inch and of a Foot
202001-01	Earth Median Ditch Check
280001-07	Temporary Erosion Control Systems
442101-09	Class B Patches
482001-02	HMA Shoulder Adjacent to Flexible Pavement
515001-04	Name Plate for Bridges
542301-03	Precast RC Flared End Section
542401-04	Metal Flared End Section for Pipe Culverts
542501-02	Inlet Box Type 24 (600) A
542506-03	Inlet Box Type 24 (600) B
542526-03	Inlet Box type 24 (600) F
542531-04	Inlet Box Type 24 (600) G
542546-01	Flush Inlet Box for Median
601001-05	Pipe Underdrains
602402-03	Precast Manhole Type A 5' (1.52m) Diameter
602416-09	Precast Manhole Type A 8' (2.44m) Diameter
602601-06	Precast Reinforced Concrete Flat Slab Top
602701-02	Manhole Steps
604001-05	Frames and Lids Type 1
604036-03	Grate Type 8
610001-09	Shoulder Inlet with Curb
630001-12	Steel Plate Beam Guardrail
630201-07	PCC/HMA Stabilization at Steel Plate Beam Guardrail
630301-09	Shoulder Widening for Type 1 Traffic Barrier Terminals
631011-10	Traffic Barrier Terminals Type 2
631031-17	Traffic Barrier Terminals Type 6
631033-08	Traffic Barrier Terminals Type 6B
635001-02	Delineators
642001-03	Shoulder Rumble Strips, 16 in.
643001-02	Sand Module Impact Attenuators
664001-02	Chaln Lnk Fence
665001-02	Woven Wire Fence
667101-02	Permanent Survey Markers
701001-02	Off-Road Operations, 2L, 2W, More Than 15' (4.5 m) Away
701006-05	Off-Road Operations, 2L, 2W, 15' (4.5 m) to 24" (600 mm) From Pavement Edge
701101-05	Off-Road Operations, Multilane, 15' (4.5 m) to 24" (600 mm) From Pavement Edge
701106-02	Off-Road Operations, Multilane, More Than 15' (4.5 m) Away
701201-05	Lane Closure, 2L, 2W, Day Only, for Speeds > 45 MPH
701301-04	Lane Closure, 2L, 2W, Short Time Operations
701400-11	Approach to Lane Closure, Freeway/Expressway
701401-13	Lane Closure, Freeway/Expressway
701406-13	Lane Closure, Freeway/Expressway, Day Operations Only
701411-09	Lane Closure, Multi-lane, at Entrance and Exit ramp, for Speeds > 45 MPH
701416-11	Lane Closure, Freeway/Expressway, with Crossover and Barrier
701426-09	Lane Closure, Multi-lane, Intermittent or Moving Operations, for Speeds > 45 MPH
701428-01	Traffic Control Setup and Removal Freway/Expressway
701451-05	Ramp Closure, Freeway/Expressway
701456-05	Partial Exit Ramp Closure, Freeway/Expressway
701901-08	Traffic Control Devices
704001-08	Temporary Concrete Barrier
720001-01	Sign Panel Mounting Details
720006-04	Sign Panel Erection Details
720011-01	Metal Posts for Signs, Markers and Delineators
728001-01	Telescoping Steel Sign Support
729001-01	Applications of Types A and B Metal Posts (For Signs & Markers)
780001-05	Typical Pavement Markings
781001-04	Typical Application of Raised Reflective Pavement Markers
782006-01	Guardrail and Barrier Wall Reflector Mounting Details
821101-02	Luminaire Wiring in Pole
830006-05	Light Pole Aluminum Davit Arm
836001-04	Light Pole Foundation
838001-01	Breakaway Devices

LIST OF HIGHWAY STANDARDS (CONTINUED)

420001-10	PAVEMENT JOINTS
420101-07	24' (7.2 M) JOINTED PCC PAVEMENT
420701-03	PAVEMENT WELDED WIRE REINFORCEMENT
602301-04	INLET, TYPE A
602306-03	INLET, TYPE B
602406-11	PRECAST MANHOLE, TYPE A, 4' (1.22 M) DIAMTER
604106-01	MEDIAN INLET FOR 36" (900 MM) REINFORCED CONCRETE PIPE
725001-01	OBJECT AND TERMINAL MARKERS

420401-13 PAVEMENT CONNECTOR (PCC) FOR BRIDGE APPROACH SLAB



REVISED 6-1-2022

REV. - MS

MODEL: Sheet 1  
FILE NAME: p:\bhaman\p\com\hmc\new\1\Documents\BFW\PROJECTS\2020\PROJECTS\2011- IDOT D7 PTB 197-35-170 Rubblization\DOT\CAD\_Sheets\071459\hmc\p\m010.dwg



USER NAME	scorven	DESIGNED -	REVISED -
DRAWN -		REVISIONS -	
PLOT SCALE	2,000' / in.	CHECKED -	REVISED -
PLOT DATE	3/15/2022	DATE -	REVISED -

STATE OF ILLINOIS  
DEPARTMENT OF TRANSPORTATION

INDEX OF SHEETS  
LIST OF HIGHWAY STANDARDS


SCALE: N.T.S. SHEET 1 OF 1 SHEETS STA. TO STA.

F.A.I. RTE.	SECTION	COUNTY	TOTAL SHEETS	SHEET NO.
70	(25-4-1, 25-5) R	EFFINGHAM	790	2
CONTRACT NO. 74599				
ILLINOIS		FED. AID PROJECT		

SUMMARY OF QUANTITIES				CONSTRUCTION CODE					
				90% FEDERAL 10% STATE	90% FEDERAL 10% STATE	90% FEDERAL 10% STATE	90% FEDERAL 10% STATE	90% FEDERAL 10% STATE	90% FEDERAL 10% STATE
CODE  NO.	ITEM	UNIT	TOTAL  QUANTITY	ROADWAY	ROADWAY	BRIDGE	BRIDGE	BRIDGE	BRIDGE
				0004 RURAL EFFINGHAM COUNTY	0004 RURAL EFFINGHAM COUNTY	0013 025-0016; 0017 EFFINGHAM COUNTY	0013 025-0051; 0052; 0064 EFFINGHAM COUNTY	0013 025-2006 EFFINGHAM COUNTY	0013 025-8305 EFFINGHAM COUNTY
30300112	AGGREGATE SUBGRADE IMPROVEMENT 12"	SQ YD	1433	1433					
31101250	SUBBASE GRANULAR MATERIAL, TYPE B 4 1/2"	SQ YD	5175	5175					
31101450	SUBBASE GRANULAR MATERIAL, TYPE B 6 1/2"	SQ YD	12115	12115					
35101500	AGGREGATE BASE COURSE, TYPE B	CU YD	2923	472	2451				
35501304	HOT-MIX ASPHALT BASE COURSE, 5"	SQ YD	22450	22450					
35501324	HOT-MIX ASPHALT BASE COURSE, 10"	SQ YD	28905	24018	4887				
35600650	HOT-MIX ASPHALT BASE COURSE WIDENING, 4"	SQ YD	18460	18460					
40201000	AGGREGATE FOR TEMPORARY ACCESS	TON	19841	16950	2891				
40600290	BITUMINOUS MATERIALS (TACK COAT)	POUND	379451	375450	4001				
40600370	LONGITUDINAL JOINT SEALANT	FOOT	76078	76078					
40600982	HOT-MIX ASPHALT SURFACE REMOVAL - BUTT JOINT	SQ YD	711	711					
40600985	PORTLAND CEMENT CONCRETE SURFACE REMOVAL - BUTT JOINT	SQ YD	711	711					
40603085	HOT-MIX ASPHALT BINDER COURSE, IL-19.0, N70	TON	24713	24713					
40603090	HOT-MIX ASPHALT BINDER COURSE, IL-19.0, N90	TON	108494	108494					
40603209	POLYMERIZED HOT-MIX ASPHALT BINDER COURSE, IL-9.5, N90	TON	229	229					

MODEL: Quantities Sheet 3  
 FILE NAME: p:\projects\2022\PROJECTS\2022 PROJECTS\2022 PROJECTS\2022 PROJECTS\DOT D7 PTB 19235 P70 RubblizedDOTCAD\_Sheets\DOTCAD\_Sheet3.dgn

 REVISED 6-1-2022 REV. - MS

 <b>BACON   FARMER   WORKMAN</b> ENGINEERING & TESTING, INC.	USER NAME # scraven	DESIGNED -	REVISED -
	PLOT SCALE # 2.0000' / in.	DRAWN -	REVISED -
	PLOT DATE # 3/17/2022	CHECKED -	REVISED -
		DATE -	REVISED -

**STATE OF ILLINOIS**  
**DEPARTMENT OF TRANSPORTATION**

<b>SUMMARY OF QUANTITIES</b>			
SCALE: N.T.S.	SHEET 3 OF 18 SHEETS	STA.	TO STA.

F.A.I. RTE.	SECTION	COUNTY	TOTAL SHEETS	SHEET NO.
70	(25-4-1, 25-5) R	EFFINGHAM	790	8
CONTRACT NO. 74599				
ILLINOIS FED. AID PROJECT				

SUMMARY OF QUANTITIES

CONSTRUCTION CODE

CODE NO.	ITEM	UNIT	TOTAL QUANTITY	90% FEDERAL 10% STATE ROADWAY 0004 RURAL EFFINGHAM COUNTY	90% FEDERAL 10% STATE ROADWAY 0004 RURAL EFFINGHAM COUNTY	90% FEDERAL 10% STATE BRIDGE 0013 025-0016; 0017 EFFINGHAM COUNTY	90% FEDERAL 10% STATE BRIDGE 0013 025-0051; 0052; 0064 EFFINGHAM COUNTY	90% FEDERAL 10% STATE BRIDGE 0013 025-2006 EFFINGHAM COUNTY	90% FEDERAL 10% STATE BRIDGE 0013 025-8305 EFFINGHAM COUNTY				
				40603240	POLYMERIZED HOT-MIX ASPHALT BINDER COURSE, IL-19.0, N90	TON	34553	34553					
				40604052	HOT-MIX ASPHALT SURFACE COURSE, IL-9.5, MIX "C", N70	TON	10883	10883					
40604164	POLYMERIZED HOT-MIX ASPHALT SURFACE COURSE, IL-9.5, MIX "D", N90	TON	9591	9044	547								
40605034	POLYMERIZED HOT-MIX ASPHALT SURFACE COURSE, STONE MATRIX ASPHALT, 12.5, MIX "E", N80	TON	23202	23202									
42000060	WELDED WIRE REINFORCEMENT	SQ YD	5426	2127	3299								
42000080	PAVEMENT CONNECTOR (PCC) FOR BRIDGE APPROACH SLAB	SQ YD	342	342									
42000501	PORTLAND CEMENT CONCRETE PAVEMENT 10" (JOINTED)	SQ YD	5084	1785	3299								
44000100	PAVEMENT REMOVAL	SQ YD	21947	21947									
44000156	HOT-MIX ASPHALT SURFACE REMOVAL, 1 3/4"	SQ YD	8960	8960									
44000173	HOT-MIX ASPHALT SURFACE REMOVAL, 6"	SQ YD	190864	190864									
44000175	HOT-MIX ASPHALT SURFACE REMOVAL, 6 1/2"	SQ YD	21245	21245									
44004250	PAVED SHOULDER REMOVAL	SQ YD	42789	36829	5960								
44200994	CLASS B PATCHES, TYPE II, 12 INCH	SQ YD	1094	1094									
44201299	DOWEL BARS 1 1/2"	EACH	1460	1460									
44213200	SAW CUTS	FOOT	6610	6610									

MODEL: Quantities Sheet 4  
 FILE NAME: p:\projects\2020\BFW\PROJECTS\2020 PROJECTS\202413 - DOT DT PTB 192-35 P/TJ Rubblized Bit/CAD\_Sheets\DT74599-H4-SCD.dgn

△ REVISED 6-1-2022 REV. - MS

	USER NAME # scraven	DESIGNED -	REVISED -
	PLOT SCALE # 2.0000" / in.	DRAWN -	REVISED -
	PLOT DATE # 3/17/2022	CHECKED -	REVISED -
		DATE -	REVISED -

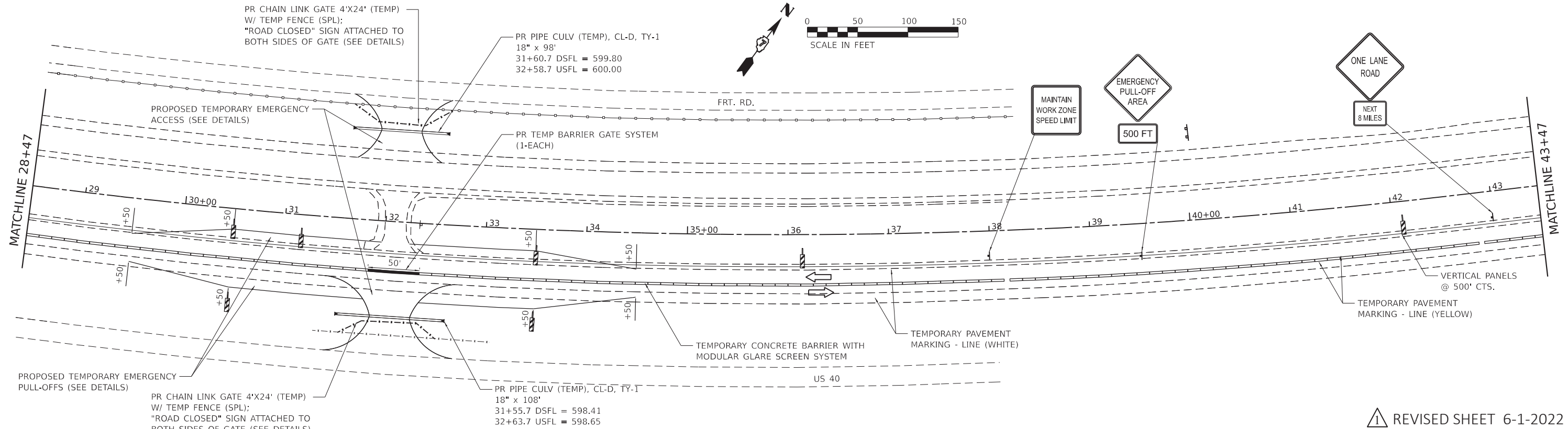
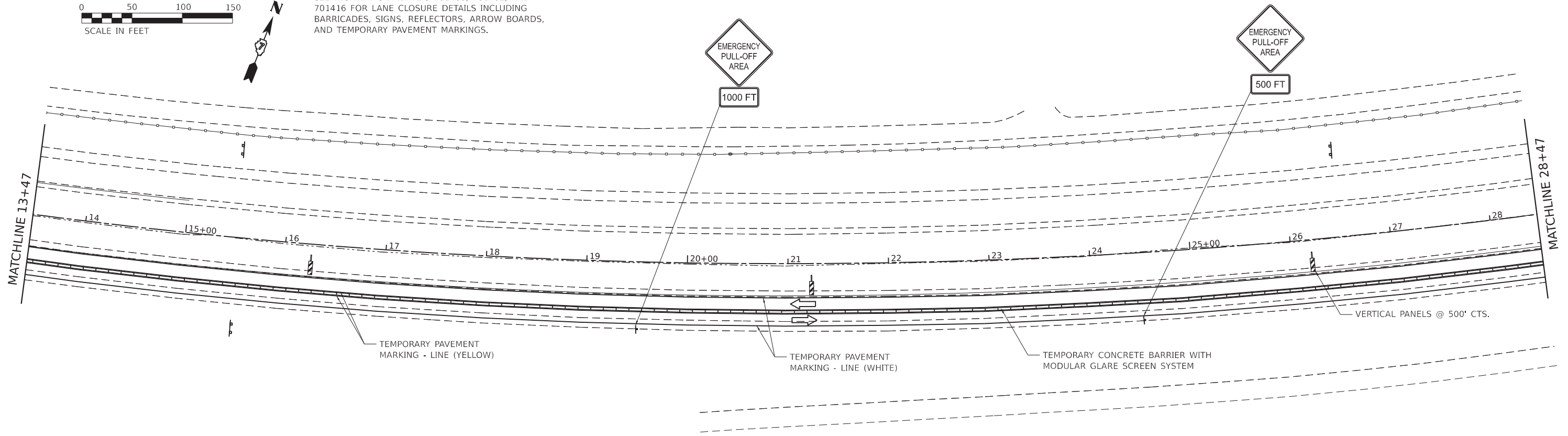
STATE OF ILLINOIS  
 DEPARTMENT OF TRANSPORTATION

SUMMARY OF QUANTITIES  
 SCALE: N.T.S. SHEET 4 OF 18 SHEETS STA. TO STA.

F.A.I. RTE.	SECTION	COUNTY	TOTAL SHEETS	SHEET NO.
70	(25-4-1, 25-5) R	EFFINGHAM	790	9
			CONTRACT NO. 74599	
ILLINOIS FED. AID PROJECT				



NOTES:  
 SEE HIGHWAY STANDARDS 701400, 701402, AND  
 701416 FOR LANE CLOSURE DETAILS INCLUDING  
 BARRICADES, SIGNS, REFLECTORS, ARROW BOARDS,  
 AND TEMPORARY PAVEMENT MARKINGS.



MODEL: I70 - 01a - 29 (Sheet)  
 FILE NAME: P:\Effingham\720 - IDOT FFB 197-035 - DT - I70 Rehabilitation\CADD\CAD\_Sheets\0714599-01a-Stage2-270 Plan\_Sheets.dgn



USER NAME = rhanfland  
 DESIGNED - LCS  
 DRAWN - LCS  
 CHECKED - RLH  
 DATE -  
 PLOT SCALE = 0.16666633' / in.  
 PLOT DATE = 6/1/2022

REVISOR  
 REVISION  
 REVISION  
 REVISION  
 REVISION

PR CHAIN LINK GATE 4'X24' (TEMP)  
 W/ TEMP FENCE (SPL);  
 "ROAD CLOSED" SIGN ATTACHED TO  
 BOTH SIDES OF GATE (SEE DETAILS)

PR PIPE CULV (TEMP), CL-D, TY-1  
 18" x 108"  
 31+55.7 DSFL = 598.41  
 32+63.7 USFL = 598.65

**STATE OF ILLINOIS  
 DEPARTMENT OF TRANSPORTATION**

**STAGING PLAN  
 STAGE 2**

SCALE: SHEET 15 OF 17 SHEETS STA. 13+47 TO STA. 43+47

**REVISED SHEET 6-1-2022**

F.A.I. RTE.	SECTION	COUNTY	TOTAL SHEETS	SHEET NO.
70	(25-4-1, 25-5)R	EFFINGHAM	790	213
			CONTRACT NO. 74599	
ILLINOIS FED. AID PROJECT				