

STATE OF ILLINOIS
DEPARTMENT OF TRANSPORTATION

FAP RTE	SECTION	COUNTY	TOTAL SHEETS	SHEET NO.
869	(101) RS-7	FRANKLIN	25	1
ILLINOIS			CONTRACT NO 78897	

FOR INDEX OF SHEETS, SEE SHEET NO. 3

PROPOSED HIGHWAY PLANS

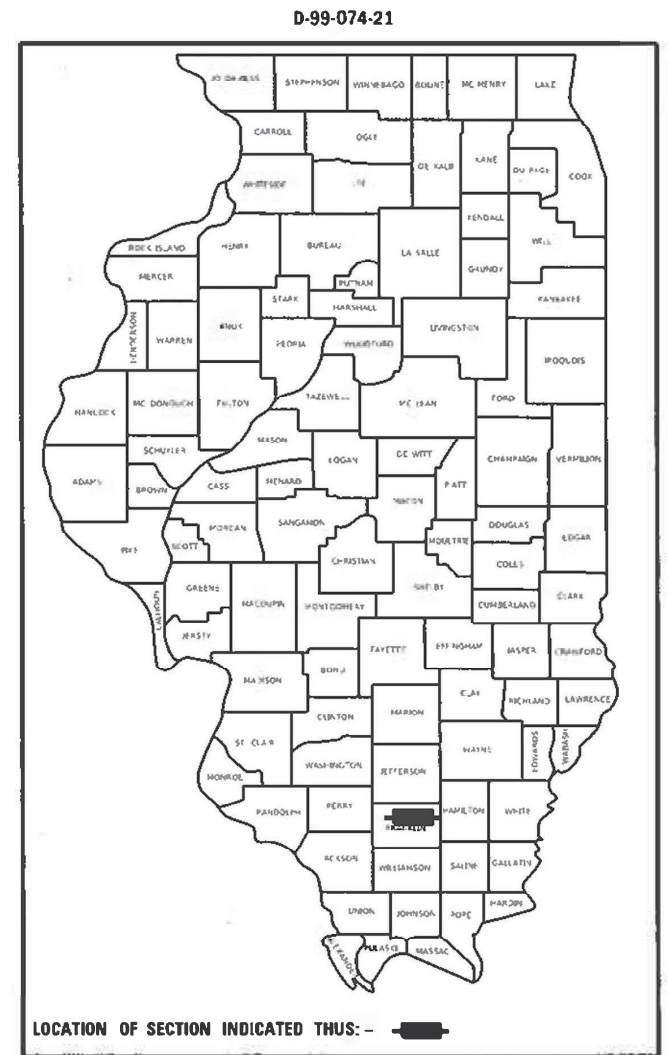
TRAFFIC DATA:
7,850(2019) WITH 3% TRUCKS

FAP ROUTE 869 (IL 34)
SECTION (101) RS-7
PROJECT STP-71HH(644)
RESURFACING FRANKLIN
COUNTY

TOWNSHIP:
BENTON

C-99-096-21

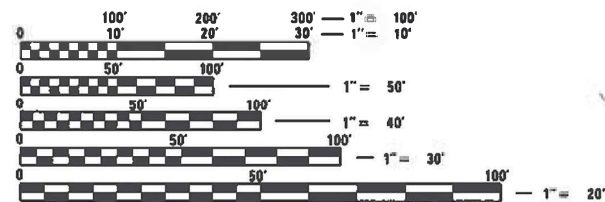
POSTED SPEED: 20, 25, 30, 35 MPH



PROPOSED IMPROVEMENT BEGINS
STA. 869+20

STA. EQUATION
926+09.7BK = 926+12.3AH

PROPOSED IMPROVEMENT ENDS
STA. 1+49

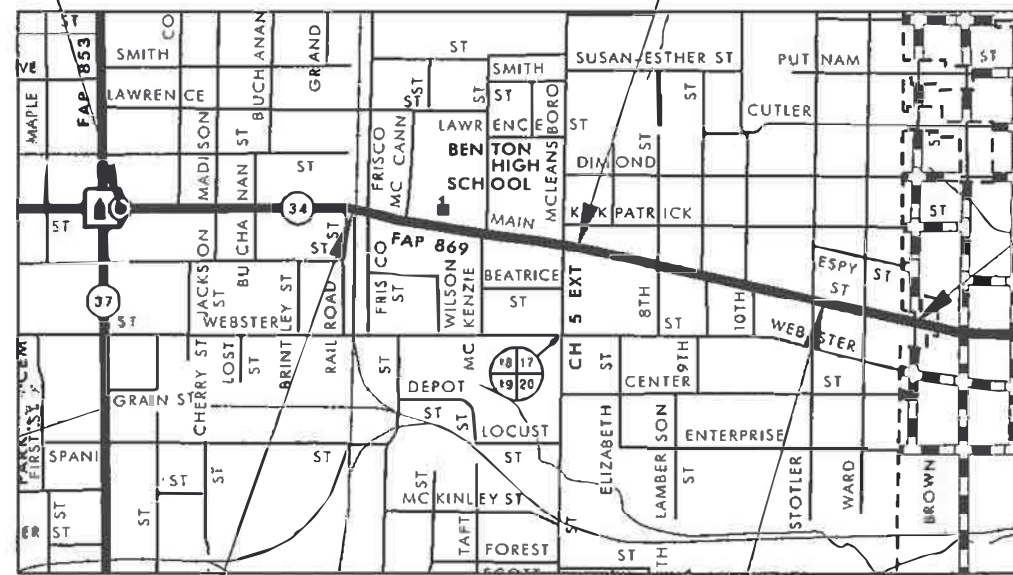


FULL SIZE PLANS HAVE BEEN PREPARED USING STANDARD ENGINEERING SCALES. REDUCED SIZED PLANS WILL NOT CONFORM TO STANDARD SCALES. IN MAKING MEASUREMENTS ON REDUCED PLANS THE ABOVE SCALES MAY BE USED.

J.U.L.I.E.
JOINT UTILITY LOCATION INFORMATION FOR EXCAVATORS
1-800-892-0123
OR 811

PROJECT DESIGNER: JAKE WARREN
PROJECT ENGINEER: SUSAN POE

CONTRACT NO. 78897



RR OMISSION
STA. 911+55 TO 911+94

STA. EQUATION
948+33BK = 0+00AH

GROSS LENGTH = 5,309 FT. = 1.01 MILE
NET LENGTH = 5,270 FT. = 0.99 MILE

STATE OF ILLINOIS
DEPARTMENT OF TRANSPORTATION

SUBMITTED March 10 2022
Stephen M. Invernizzi
REGIONAL ENGINEER

May 13, 2022 [Signature]
ENGINEER OF DESIGN AND ENVIRONMENT

May 13, 2022 [Signature]
DIRECTOR OF HIGHWAYS PROJECT IMPLEMENTATION

PRINTED BY THE AUTHORITY
OF THE STATE OF ILLINOIS

MODEL: D:\out
FILE NAME: \\p:\w\ds\w\be\w\com\p\w\DOT\Documents\DOT_Oilkes\Drawn_9\p\oil\1178897\CAD\Drawn\CAD\Drawn\9278897.dwg
PLOT DATE: 3/1/2022

Prepared By: Charles Stein
DISTRICT STUDIES & PLANS ENGINEER

Examined By: Nancy Lee
DISTRICT LAND ACQUISITION ENGINEER

Examined By: Car Nelson
DISTRICT PROGRAM DEVELOPMENT ENGINEER

Examined By: R. C. ...
DISTRICT OPERATIONS ENGINEER

Examined By: Doyle J. ...
DISTRICT PROJECT IMPLEMENTATION ENGINEER

Examined By: Doyle J. ...
DISTRICT CONSTRUCTION ENGINEER

Examined By: R. C. ...
DISTRICT MATERIALS ENGINEER

USER NAME = Warren	DESIGNED -	REVISED -
PLOT SCALE = 20.0000' / in	DRAWN -	REVISED -
PLOT DATE = 3/1/2022	CHECKED -	REVISED -
	DATE -	REVISED -

**STATE OF ILLINOIS
DEPARTMENT OF TRANSPORTATION**

SIGNATURE SHEET			
SCALE:	SHEET	OF SHEETS	STA. TO STA.

F.A.P. RTE.	SECTION	COUNTY	TOTAL SHEETS	SHEET NO.
869	(101) RS-7	FRANKLIN	25	2
CONTRACT NO. 78897				
ILLINOIS FED. AID PROJECT				

INDEX OF SHEETS

SHEET NO	DESCRIPTION
1	COVER SHEET
2	SIGNATURE SHEET
3	INDEX OF SHEETS, HIGHWAY STANDARDS,
4	GENERAL NOTES, MIX DESIGN
5-8	SUMMARY OF QUANTITIES
9-13	SCHEDULE OF QUANTITIES
14-15	TYPICAL SECTIONS
16-19	SIDEWALK DETAILS
20	TRAFFIC SIGNAL DETAIL
21	TRAFFIC SIGNAL WIRE DETAIL
22	GROUND SERVICE DETAIL, PHASE DESIGNATION DIAGRAM
23	PEDESTRIAN PUSH BUTTON POST DETAIL
24	DETAILS: BIKE LANE, CROSSWALK, ROUGH GRVD SURFACE
25	DETAILS: APS SIGN, UNEVEN LANES, HMA TRANSITION

HIGHWAY STANDARDS

- 000001-08_STANDARDSYMBOLSABBREVIATIONS-PATTERNS-001
- 001006_DECIMALOFINCH-FOOT
- 424001-11_PERPENDICULARCURBRAMPS
- 424006-05_DIAGONALCURBRAMPS-054
- 424011-04_CORNERPARALLELCURBRAMPS
- 424016-05_MIDBLOCKCURBRAMPS
- 424021-06_DEPRESSEDCORNER-057
- 442201-03_CLASSC-DPATCHES
- 606001-08_CONCCURBTYPED-COMBOCONCC-G
- 701501-06_URBANLNCLOSURE2L2W-UNDIVIDED
- 701502-09_URBANLNCLOSURE2L2WWITHBIDIRECTLEFTTURNLN
- 701701-10_URBANLNCLOSUREMULTILNINTERSECTION
- 701801-06_SIDEWALKCORNERORCROSSWALKCLOSURE
- 701901-08_TRAFCNTRLDEVICES
- 780001-05_TYPICALPVMTRKINGS
- 781001-04_TYPICALAPPRAISEDREFLCPVMTMRKRS
- 838001-01_BREAKAWAYDEVICES
- 857001-01_STDPHASEDESIGNATIONDIAGRAMS-PHASESEQ
- 873001-02_TRAFSIGNALGROUND-BOND
- 876001-04_PEDESTRIANPUSHBUTTONPOST
- 878001-11_CONCRETEFOUNDATIONDETAILS
- 880006-01_TRFSIGNALMOUNTDETAILS-POST-BRACKETMOUNT
- 886001-01_DETECTORLOOPINSTALLATIONS
- 886006-01_TYPICALLAYOUTSFORDETECTIONLOOPS
- 420001-10_PAVEMENT JOINTS
- 805001-01_ELECTRICAL SERVICE INSTALLATION DETAILS

REV. - MS

MODEL NAME: MAMES
FILE NAME: SHEETS

USER NAME = SUSERS	DESIGNED - _____	REVISED - _____	STATE OF ILLINOIS DEPARTMENT OF TRANSPORTATION	INDEX OF SHEETS HIGHWAY STANDARDS	F.A.P. RTE.	SECTION	COUNTY	TOTAL SHEETS	SHEET NO.	
DRAWN - _____	REVISOR - _____	869			(101) RS-7	FRANKLIN	25	3		
PLOT SCALE = SCALES	CHECKED - _____	REVISOR - _____			CONTRACT NO. 78897					
PLOT DATE = SDATES	DATE - _____	REVISOR - _____			ILLINOIS FED. AID PROJECT					
				SCALE: _____	SHEET _____	OF _____	SHEETS	STA. _____	TO STA. _____	

GENERAL NOTES

FACTORS USED FOR ESTIMATING PLAN QUANTITIES ARE AS FOLLOWS AND SHALL NOT BE USED FOR THE BASIS OF FINAL QUANTITIES:

ALL HOT MIX ASPHALT 2.016 TONS/CU. YD.

THE QUANTITY OF SHORT TERM PAVEMENT MARKING SHOWN IN THE PLANS IS BASED ON ONE APPLICATION EACH FOR THE HMA SURFACE REMOVAL AND SURFACE COURSE

ALL LOCATIONS OF DISTURBED EARTH THAT THE ENGINEER DETERMINES WILL REQUIRE SEEDING AS A RESULT OF SIDEWALK CONSTRUCTION SHALL BE SEEDDED IN ACCORDANCE WITH SECTION 250 OF THE STANDARD SPECIFICATIONS. THE COST OF SEEDING SHALL BE CONSIDERED INCIDENTAL TO PCC SIDEWALK 4 INCHES.

WHEN CLASS C PATCHES ARE LOCATED IN AREAS OF EXISTING BRICK PAVEMENT, A DIAMOND BLADE WHEEL SAW MAY BE REQUIRED TO LIMIT SPALLING OF THE EXISTING PAVEMENT. THIS WORK WILL NOT BE PAID FOR SEPARATELY, BUT SHALL BE CONSIDERED INCLUDED IN THE CONTRACT UNIT PRICES OF THE TYPE AND SIZE OF PATCHES INVOLVED/

THE CONTRACTOR SHALL STAMP STATIONING IN THE PROPOSED HOT MIX ASPHALT SURFACE AT 300 FT INTERVALS ON ALTERNATING SIDES OF THE PAVEMENT AND AS DIRECTED BY THE ENGINEER. THE STATION SYMBOL STAMPS USED SHALL BE FURNISHED BY THE CONTRACTOR. THEY SHALL BE 5 1/2 IN. TALL, OF A DESIGN APPROVED BY THE ENGINEER, AND SHALL REMAIN THE PROPERTY OF THE CONTRACTOR.

HMA RESURFACING SHALL BE PLACED IN A SEQUENCE THAT WILL MINIMIZE THE TIME THE CENTERLINE EDGE IS EXPOSED TO TRAFFIC. WHEN AT THE END OF A DAY'S OPERATION THE EXPOSED CENTERLINE EDGE IS GREATER THAN 2,000 FT, THE CONTRACTOR SHALL BE REQUIRED TO PAVE IN THE ADJACENT LANE ON THE FOLLOWING WORK DAY. PRIOR TO WINTER SHUTDOWN, RESURFACING ON ADJACENT LANES IS TO BE BROUGHT UP TO THE SAME ELEVATION.

THE FURNISHING AND INSTALLATION OF THE 1 1/4 IN. CONDUIT WITH ITS TRENCHING AND BACKFILL FROM THE LOOP SAWCUT TO THE SPLICE POINT SHALL BE INCLUDED IN THE LOOP INSTALLATION UNLESS SHOWN OTHERWISE ON THE PLANS.

ALL DETECTOR LOOP CORNERS SHALL BE CORE DRILLED 2 IN. MINIMUM DIAMETER EXCEPT THOSE PLACED UNDER RESURFACING. THE DETECTOR LOOP CORNERS PLACED UNDER RESURFACING SHALL BE DIAGONALLY SAWCUT.

ALL DETECTOR LOOPS SHALL BE INSTALLED PRIOR TO RESURFACING.

THE CONTRACTOR SHALL NOTIFY THE ENGINEER OF TRAFFIC OPERATIONS 72 HOURS PRIOR TO THE SHUT-DOWN OR CUTTING OF EXISTING DETECTOR LOOPS.

VIBRATORY ROLLERS WILL NOT BE ALLOWED WITHIN THE CORPORATE LIMITS OF BENTON

REVISE STANDARD SPECIFICATIONS ARTICLE 107.12, PARAGRAPH 5, LAST SENTENCE TO READ: 'ALL OTHER RAILROAD FLAGGER COSTS WILL BE INCURRED BY THE DEPARTMENT ACCORDING TO ARTICLE 109.05.'

COMMITMENTS: NONE

HMA MIXTURE REQUIREMENTS TABLES

The following HMA mixture requirements are applicable for this project

Location(s):	Hot-Mix Asphalt Surface Course
Mixture Use(s):	Polymerized Hot-Mix Asphalt Surface Course, Mix D, N90
PG:	SBS PG76-22
Design Air Voids:	4.0%, 90 Gyration Design
Mixture Composition:	IL-9.5mm
Friction Aggregate:	Mix D
Mixture Weight:	112 lbs/Sq Yd/in
Quality Management Program:	QCP
Sublot Size:	TBD
Material Transfer Device (Required?)	Yes

MODEL: Default
FILE: M:\GIS\Projects\GIS\Projects\DOT_Offices\District_9\Projects\78897\CADD\Drawings\CAD\Sheet\0978897-510-Civ_Seq_Index.dgn

REV. - MS

USER NAME = fowlera	DESIGNED -	REVISED -	STATE OF ILLINOIS DEPARTMENT OF TRANSPORTATION	GENERAL NOTES MIXTURE REQUIREMENTS	F.A.P. RTE.	SECTION	COUNTY	TOTAL SHEETS	SHEET NO.
	DRAWN -	REVISED -			869	(101) RS-7	FRANKLIN	25	4
PLOT SCALE = 20.0000' / in.	CHECKED -	REVISED -			CONTRACT NO. 78897				
PLOT DATE = 3/17/2022	DATE -	REVISED -			ILLINOIS FED. AID PROJECT				
				SCALE:	SHEET	OF	SHEETS	STA.	TO STA.

SUMMARY OF QUANTITIES

COUNTY:	FRANKLIN CO	FRANKLIN CO
ROUTE:	FAP 869	FAP 869
FUNDING:	80% FEDERAL 20% STATE	80% FED 10% STATE 10 % LOCAL
LOCATION:	URBAN	URBAN
	ROADWAY	ROADWAY
	0005	0021

CODE NUMBER	ITEM DESCRIPTION	UNIT	TOTAL QUANTITY		
40600290	BITUMINOUS MATERIALS (TACK COAT)	POUND	9,556		9,556
40600990	TEMPORARY RAMP	SQ YD	1,981		1,981
40604164	POLYMERIZED HOT-MIX ASPHALT SURFACE COURSE, IL-9.5, MIX "D", N90	TON	2,379		2,379
42001300	PROTECTIVE COAT	SQ YD	66		66
42400100	PORTLAND CEMENT CONCRETE SIDEWALK 4 INCH	SQ FT	2,430		2,430
42400800	DETECTABLE WARNINGS	SQ FT	160		160
44000157	HOT-MIX ASPHALT SURFACE REMOVAL, 2"	SQ YD	21,236		21,236
44000500	COMBINATION CURB AND GUTTER REMOVAL	FOOT	298		298
44000600	SIDEWALK REMOVAL	SQ FT	2,200		2,200
44201403	CLASS C PATCHES, TYPE II, 14 INCH	SQ YD	224		224
44201407	CLASS C PATCHES, TYPE III, 14 INCH	SQ YD	152		152
44201409	CLASS C PATCHES, TYPE IV, 14 INCH	SQ YD	1,167		1,167
60603800	COMBINATION CONCRETE CURB AND GUTTER, TYPE B-6.12	FOOT	298		298
67000400	ENGINEER'S FIELD OFFICE, TYPE A	CAL MO	3		3
67100100	MOBILIZATION	L SUM	1		1

MODEL NUMBER: MAMES
FILE NAME: 869LS

USER NAME = SUSERS	DESIGNED - _____	REVISED - _____
	DRAWN - _____	REVISED - _____
PLOT SCALE = 5SCALES	CHECKED - _____	REVISED - _____
PLOT DATE = SDATES	DATE - _____	REVISED - _____

**STATE OF ILLINOIS
DEPARTMENT OF TRANSPORTATION**

SUMMARY OF QUANTITIES

SCALE: _____ SHEET ____ OF ____ SHEETS STA. _____ TO STA. _____

F.A.P. RTE. 869	SECTION (101) RS-7	COUNTY FRANKLIN	TOTAL SHEETS 25	SHEET NO. 5
CONTRACT NO. 78897				
ILLINOIS FED. AID PROJECT				

SUMMARY OF QUANTITIES - CONT

COUNTY:	FRANKLIN CO	FRANKLIN CO
ROUTE:	FAP 869	FAP 869
FUNDING:	80% FEDERAL 20% STATE	80% FED 10% STATE 10 % LOCAL
LOCATION:	URBAN	URBAN
	ROADWAY	ROADWAY
	0005	0021

CODE NUMBER	ITEM DESCRIPTION	UNIT	TOTAL QUANTITY		
70102620	TRAFFIC CONTROL AND PROTECTION, STANDARD 701501	L SUM	1		1
70102622	TRAFFIC CONTROL AND PROTECTION, STANDARD 701502	L SUM	1		1
70102635	TRAFFIC CONTROL AND PROTECTION, STANDARD 701701	L SUM	1		1
70102640	TRAFFIC CONTROL AND PROTECTION, STANDARD 701801	L SUM	1		1
70107025	CHANGEABLE MESSAGE SIGN	CAL DA	28		28
70300100	SHORT TERM PAVEMENT MARKING	FOOT	321		321
70300150	SHORT TERM PAVEMENT MARKING REMOVAL	SQ FT	107		107
70300211	TEMPORARY PAVEMENT MARKING LETTERS AND SYMBOLS - PAINT	SQ FT	776		776
70300221	TEMPORARY PAVEMENT MARKING - LINE 4"- PAINT	FOOT	13,376		13,376
70300241	TEMPORARY PAVEMENT MARKING - LINE 6"- PAINT	FOOT	288		288
70300261	TEMPORARY PAVEMENT MARKING - LINE 12"- PAINT	FOOT	558		558
70300281	TEMPORARY PAVEMENT MARKING - LINE 24"- PAINT	FOOT	120		120
* 78000100	THERMOPLASTIC PAVEMENT MARKING - LETTERS AND SYMBOLS	SQ FT	776		776
* 78000200	THERMOPLASTIC PAVEMENT MARKING - LINE 4"	FOOT	13,376		13,376
* 78000400	THERMOPLASTIC PAVEMENT MARKING - LINE 6"	FOOT	288		288

* SPECIALTY ITEM

MODEL NUMBER: MAMES
FILE NAME: 869LS

SUMMARY OF QUANTITIES - CONT

COUNTY:	FRANKLIN CO	FRANKLIN CO
ROUTE:	FAP 869	FAP 869
FUNDING:	80% FEDERAL 20% STATE	80% FED 10% STATE 10 % LOCAL
LOCATION:	URBAN	URBAN
	ROADWAY	ROADWAY
	0005	0021

CODE NUMBER	ITEM DESCRIPTION	UNIT	TOTAL QUANTITY	0005	0021
* 78000600	THERMOPLASTIC PAVEMENT MARKING - LINE 12"	FOOT	558	558	
* 78000650	THERMOPLASTIC PAVEMENT MARKING - LINE 24"	FOOT	120	120	
* 78100100	RAISED REFLECTIVE PAVEMENT MARKER	EACH	261	261	
78300200	RAISED REFLECTIVE PAVEMENT MARKER, REMOVAL	EACH	261	261	
78300201	PAVEMENT MARKING REMOVAL - GRINDING	SQ FT	6,176	6,176	
* 80500010	SERVICE INSTALLATION - GROUND MOUNTED	EACH	1		1
* 81028350	UNDERGROUND CONDUIT, PVC, 2" DIA.	FOOT	164		164
* 81028390	UNDERGROUND CONDUIT, PVC, 4" DIA.	FOOT	251		251
* 87301225	ELECTRIC CABLE IN CONDUIT, SIGNAL NO. 14 3C	FOOT	945		945
* 87301245	ELECTRIC CABLE IN CONDUIT, SIGNAL NO. 14 5C	FOOT	143		143
* 87301815	ELECTRIC CABLE IN CONDUIT, SERVICE, NO. 6 3 C	FOOT	62		62
* 87301900	ELECTRIC CABLE IN CONDUIT, EQUIPMENT GROUNDING CONDUCTOR, NO. 6 1C	FOOT	400		400
* 87500600	TRAFFIC SIGNAL POST, 10 FT.	EACH	1		1
* 87600100	PEDESTRIAN PUSH-BUTTON POST, TYPE I	EACH	6		6
* 87800100	CONCRETE FOUNDATION, TYPE A	FOOT	3		3
* 87900100	DRILL EXISTING FOUNDATION	EACH	2		2

REV. - MS

MODEL NUMBER: MAMES
FILE NAME: 869LS

USER NAME = SUSERS	DESIGNED - _____	REVISED - _____	STATE OF ILLINOIS DEPARTMENT OF TRANSPORTATION	SUMMARY OF QUANTITIES			F.A.P. RTE.	SECTION	COUNTY	TOTAL SHEETS	SHEET NO.
PLOT SCALE = 5SCALES	CHECKED - _____	REVISED - _____					869	(101) RS-7	FRANKLIN	25	7
PLOT DATE = SDATES	DATE - _____	REVISED - _____		SCALE: _____	SHEET _____ OF _____ SHEETS	STA. _____ TO STA. _____	ILLINOIS FED. AID PROJECT				
						CONTRACT NO. 78897					

SUMMARY OF QUANTITIES - CONT

COUNTY:	FRANKLIN CO	FRANKLIN CO
ROUTE:	FAP 869	FAP 869
FUNDING:	80% FEDERAL 20% STATE	80% FED 10% STATE 10 % LOCAL
LOCATION:	URBAN	URBAN
	ROADWAY	ROADWAY
	0005	0021

CODE NUMBER	ITEM DESCRIPTION	UNIT	TOTAL QUANTITY		
* 87900200	DRILL EXISTING HANDHOLE	EACH	14		14
* 88102717	PEDESTRIAN SIGNAL HEAD, LED, 1-FACE, BRACKET MOUNTED WITH COUNTDOWN	EACH	8		8
* 88600100	DETECTOR LOOP, TYPE I	FOOT	540		540
* 88800100	PEDESTRIAN PUSH-BUTTON	EACH	8		8
* 89502375	REMOVE EXISTING TRAFFIC SIGNAL EQUIPMENT	EACH	1		1
X1700066	POTHOLING	EACH	12		12
X7340100	CONCRETE FOUNDATIONS, GROUND MOUNT	CU YD	1		1
* X8570215	FULL-ACTUATED CONTROLLER IN EXISTING CABINET	EACH	1		1
* X8760200	ACCESSIBLE PEDESTRIAN SIGNALS	EACH	8		8
Z0034105	MATERIAL TRANSFER DEVICE	TON	2,379	2,379	
Z0048665	RAILROAD PROTECTIVE LIABILITY INSURANCE	L SUM	1	1	

* SPECIALTY ITEM

REV. - MS

MODEL NUMBER: MAMES
FILE NAME: 869.DWG

USER NAME = SUSERS	DESIGNED - _____	REVISED - _____	STATE OF ILLINOIS DEPARTMENT OF TRANSPORTATION	SUMMARY OF QUANTITIES	F.A.P. RTE. 869	SECTION (101) RS-7	COUNTY FRANKLIN	TOTAL SHEETS 25	SHEET NO. 8		
PLOT SCALE = 5/8"=1'	CHECKED - _____	REVISED - _____			SCALE: _____ SHEET ____ OF ____ SHEETS STA. _____ TO STA. _____		CONTRACT NO. 78897				
PLOT DATE = SDATES	DATE - _____	REVISED - _____			ILLINOIS FED. AID PROJECT						

MAINLINE RESURFACING SCHEDULE

LOCATION STATION TO STATION	LENGTH	PVMNT. WIDTH	PVMNT. AREA	HOT-MIX ASPHALT SURFACE REMOVAL 2"	POLYMERIZED HOT-MIX ASPHALT SURFACE COURSE MIX "D", N90 IL 9.5	BITUMINOUS MATERIALS (TACK COAT)	COMMENTS
	(FEET)	(FEET)	(SQFT)	(SQ YD)	(TON)	(POUND)	
FAP 869 (IL 34)							
896 + 20 TO 911 + 55	1,535	36	55,260	6,140	688	2,763	
911 + 55 TO 911 + 94							RAILROAD EXCLUSION
911 + 94 TO 926 + 09.7	1,416	36	50,965	5,663	634	2,548	
926 + 09.7 BK = 926 + 12.3 AH							STATION EQUATION
926 + 12.3 TO 948 + 33	2,221	36	79,945	8,883	995	3,997	
948 + 33 BK = 0 + 00 AH							STATION EQUATION
0 + 00 TO 1 + 49	149	VAR	4,955	551	62	248	
TOTALS				21,236	2,379	9,556	

MODEL NAME: MAMES
FILE NAME: 869LS

	USER NAME = SUSERS	DESIGNED -	REVISED -	STATE OF ILLINOIS DEPARTMENT OF TRANSPORTATION	RESURFACING SCHEDULE	F.A.P. RTE. 869	SECTION (101) RS-7	COUNTY FRANKLIN	TOTAL SHEETS 25	SHEET NO. 9
	PLOT SCALE = 5SCALES	CHECKED -	REVISED -			CONTRACT NO. 78897				
	PLOT DATE = SDATES	DATE -	REVISED -		SCALE:	SHEET	OF	SHEETS	STA.	TO STA.
						ILLINOIS FED. AID PROJECT				

SIDEWALK SCHEDULE

LOCATION STATION	SIDEWALK REMOVAL (SQ FT)	PORTLAND CEMENT CONCRETE SIDEWALK 4" (SQ FT)	DETECTABLE WARNINGS (SQ FT)	COMB. CURB & GUTTER REMOVAL (FOOT)	COMB. CONC. CURB & GUTTER TYPE B-6.12 (FOOT)	PROTECTIVE COAT (SQ YD)
IL 34/MADISON STREET						
NW QUADRANT	180	180	22	49	49	11
SW QUADRANT	260	275	24	48	48	11
IL 34/COLLEGE STREET						
NE QUADRANT	150	352	21	22	22	5
SE QUADRANT	148	148	10	0	0	0
IL 34/McLEANSBORO STREET						
NW QUADRANT	280	261	23	22	22	5
NE QUADRANT	281	285	20	49	49	11
SW QUADRANT	485	485	20	63	63	14
SE QUADRANT	416	444	20	45	45	10
TOTALS	2,200	2,430	160	298	298	66

MODEL NAME: MAMES
FILE NAME: 811015

	USER NAME = SUSERS	DESIGNED -	REVISED -	STATE OF ILLINOIS DEPARTMENT OF TRANSPORTATION	SIDEWALK SCHEDULE	F.A.P. RTE. 869	SECTION (101) RS-7	COUNTY FRANKLIN	TOTAL SHEETS 25	SHEET NO. 10
	PLOT SCALE = 5SCALES	CHECKED -	REVISED -			CONTRACT NO. 78897				
	PLOT DATE = SDATES	DATE -	REVISED -		SCALE:	SHEET	OF	SHEETS	STA.	TO STA.
										ILLINOIS FED. AID PROJECT

PATCHING SCHEDULE

LANE LOCATION	AREA	CLASS C PATCHES, TYPE I, 14 INCH	CLASS C PATCHES, TYPE II, 14 INCH	CLASS C PATCHES, TYPE III, 14 INCH	CLASS C PATCHES, TYPE IV, 14 INCH
	SQYD	SQYD	SQYD	SQYD	SQYD
EB	53.33				53.33
WB	33.33				33.33
WB	8		8		
WB	13.33		13.33		
WB	10.67		10.67		
EB	33.33				33.33
WB	10.67		10.67		
EB	13.33		13.33		
WB	13.33		13.33		
EB	26.67				26.67
WB	33.33				33.33
WB	13.33		13.33		
WB	13.33		13.33		
EB	26.67				26.67
WB	13.33		13.33		
WB	26.67				26.67
EB	13.33		13.33		
WB	20			20	
EB	40				40
WB	53.33				53.33
WB	26.67				26.67
EB	13.33		13.33		
CL	20			20	
EB	66.67				66.67
EB	33.33				33.33
CL	13.33		13.33		
WB	26.67				26.67
WB	26.67				26.67

PATCHING SCHEDULE

LANE LOCATION	AREA	CLASS C PATCHES, TYPE I, 14 INCH	CLASS C PATCHES, TYPE II, 14 INCH	CLASS C PATCHES, TYPE III, 14 INCH	CLASS C PATCHES, TYPE IV, 14 INCH
	SQYD	SQYD	SQYD	SQYD	SQYD
EB	40				40
WB	53.33				53.33
EB	13.33		13.33		
WB	20			20	
EB	20			20	
WB	8		8		
EB	26.67				26.67
WB	53.33				53.33
WB	10.67		10.67		
EB	10		10		
WB	16.67			16.67	
EB	8		8		
WB	33.33				33.33
EB	40				40
WB	53.33				53.33
EB	13.33		13.33		
WB	17.78			17.78	
EB	26.67				26.67
WB	10.67		10.67		
WB	26.67				26.67
EB	66.67				66.67
WB	66.67				66.67
WB	80				80
EB	53.33				53.33
WB	40				40
EB	18.67			18.67	
WB	18.67			18.67	
TOTAL		0	224	152	1167

MODEL: Default
 FILE: \\malfc-pw-bendley.com\P\DOT\Documents\DOT Office\Dir\drt_@Project\78897\CADD\Drawings\CAD\Drawings\78897-SHB-Typ_Sch_Tile_CreepackElements.dgn

USER NAME = fowler	DESIGNED -	REVISED -
PLOT SCALE = 40,0000 * / in.	DRAWN -	REVISED -
PLOT DATE = 3/17/2022	CHECKED -	REVISED -
	DATE -	REVISED -

STATE OF ILLINOIS
DEPARTMENT OF TRANSPORTATION

PATCHING SCHEDULE

SCALE: SHEET OF SHEETS STA. TO STA.

F.A.P. RTE.	SECTION	COUNTY	TOTAL SHEETS	SHEET NO.
869	(101) RS-7	FRANKLIN	25	11
ILLINOIS FED. AID PROJECT			CONTRACT NO. 78897	

PAVEMENT MARKING SCHEDULE

LOCATION STATION TO STATION				LENGTH (INFO ONLY)	THERMOPLASTIC PAVEMENT MARKING						NOTES		
					4 INCH			12 INCH (DIAGONALS) YELLOW	6 INCH (CROSSWALK EDGE LINE) WHITE	12 INCH (CROSSWALK) WHITE		24 INCH (STOP BAR) WHITE	LETTERS AND SYMBOLS
					WHITE (EDGE LINE)	YELLOW (TURN LANE OR DBL, YELLOW)	(SKIP- DASH) YELLOW						
IL 34 (FAP869)					FOOT	FOOT	FOOT	FOOT	FOOT	FOOT	FOOT	SQ FT	
LT&RT	896+22	To	901+71	549			137.3						
LT	896+28	To	899+62	334	334								BIKE LANE
LT	900+05	To	901+71	166	166								BIKE LANE
RT	896+28	To	901+71	543	543								BIKE LANE
LT&RT	901+71	To	902+61	90		360							CLTL
LT&RT	902+61	To	911+55	894		1788	447						CLTL
RT	910+20									12			RR STOP BAR
RT	910+45										54		RR CROSSING "X"
RT	910+45										7.2		RR CROSSING "R" x2
RT	910+70									12			RR STOP BAR
RT	911+44									12			STOP BAR
911+55 TO 911+94 RR CROSSING													
LT	912+06									12			STOP BAR
LT	912+09									12			RR STOP BAR
LT	913+24										54		RR CROSSING "X"
LT	913+24										7.2		RR CROSSING "R" x2
LT	913+49									12			RR STOP BAR
LT&RT	911+91	To	923+28	1137		2274	569						CLTL
LT	924+35	To	925+05	70		70							LT TURN LN
LT	924+45										20.8		"ONLY"
	924+73										15.6		LT TURN ARROW
LT	923+28	To	925+05	177		354							
	925+05									24			STOP BAR
McLEANSBORO RD. STA. 925+50													
	925+90.7									24			STOP BAR
RT	925+90.7	To	926+09.7	19		38							
	925+90.7	To	926+09.7	19		19							LT TURN LANE
EQ. STA. 926+09.7 BK = 926+12.3 AH													
	926+12.3	To	926+70	57.7		57.7							LT TURN LANE
	926+24										15.6		LT TURN ARROW
	926+72										20.8		"ONLY"
RT	926+12.3	To	927+86	173.7		347.4							
LT&RT	927+86	To	945+70	1784		3568	892						CLTL
LT&RT	945+70	To	948+33	263		1052							CLTL
EQ. STA. 948+33 BK = 0+00 AH													
	0+00	To	0+63	63		252							
	0+63	To	1+49	86		86	22						
	896+28								72	90			CROSSWALK
	901+93								72	90			CROSSWALK
	915+84								72	90			CROSSWALK
	920+72								72	90			CROSSWALK
	925+20								148	168			CROSSWALK
	925+90								74	90			CROSSWALK
SUB-TOTAL				6425.4	1043	10266.1	2067.3	0	288	360	120	195.2	

MODEL NUMBER: MAMES
FILE NAME: 869

USER NAME = SUSERS	DESIGNED -	REVISED -	STATE OF ILLINOIS DEPARTMENT OF TRANSPORTATION	PAVEMENT MARKING SCHEDULE 1 OF 2				F.A.P. RTE. 869	SECTION (101) RS-7	COUNTY FRANKLIN	TOTAL SHEETS 25	SHEET NO. 12
PLOT SCALE = 55CALES	CHECKED -	REVISED -		SCALE: SHEET OF SHEETS STA. TO STA.				CONTRACT NO. 78897				
PLOT DATE = SDATES	DATE -	REVISED -		ILLINOIS FED. AID PROJECT								

PAVEMENT MARKING SCHEDULE

LOCATION	STATION TO STATION		LENGTH (INFO ONLY)	THERMOPLASTIC PAVEMENT MARKING						NOTES		
				4 INCH			12 INCH (DIAGONALS) YELLOW	6 INCH (CROSSWALK EDGE LINE) WHITE	12 INCH (CROSSWALK) WHITE		24 INCH (STOP BAR) WHITE	LETTERS AND SYMBOLS
				WHITE (EDGE LINE)	YELLOW (TURN LANE OR DBL, YELLOW)	(SKIP- DASH) YELLOW						
IL 34 (FAP869)				FOOT	FOOT	FOOT	FOOT	FOOT	FOOT	SQ FT		
	902+83									31.2	TURNING ARROWS	
	905+53									31.2	TURNING ARROWS	
	908+23									31.2	TURNING ARROWS	
	910+93									31.2	TURNING ARROWS	
	912+93									31.2	TURNING ARROWS	
	916+33									31.2	TURNING ARROWS	
	919+03									31.2	TURNING ARROWS	
	921+73									31.2	TURNING ARROWS	
	923+60									31.2	TURNING ARROWS	
	928+50									31.2	TURNING ARROWS	
	931+20									31.2	TURNING ARROWS	
	933+90									31.2	TURNING ARROWS	
	936+60									31.2	TURNING ARROWS	
	939+30									31.2	TURNING ARROWS	
	942+00									31.2	TURNING ARROWS	
	944+70									31.2	TURNING ARROWS	
RT	897+00									20.3	BIKE AND ARROW	
LT	899+20									20.3	BIKE AND ARROW	
RT	900+00									20.3	BIKE AND ARROW	
LT	901+20									20.3	BIKE AND ARROW	
	901+71	To	902+61							44	DIAGONALS	
	945+76	To	0+63							154	DIAGONALS	
SUB - TOTAL				0	0	0	0	198	0	0	0	580.4
TOTAL						13,376		198	288	360	120	776

MODEL NAME: MAMES
FILE NAME: BULES

USER NAME = SUSERS	DESIGNED -	REVISED -
	DRAWN -	REVISED -
PLOT SCALE = SSCALES	CHECKED -	REVISED -
PLOT DATE = SDATES	DATE -	REVISED -

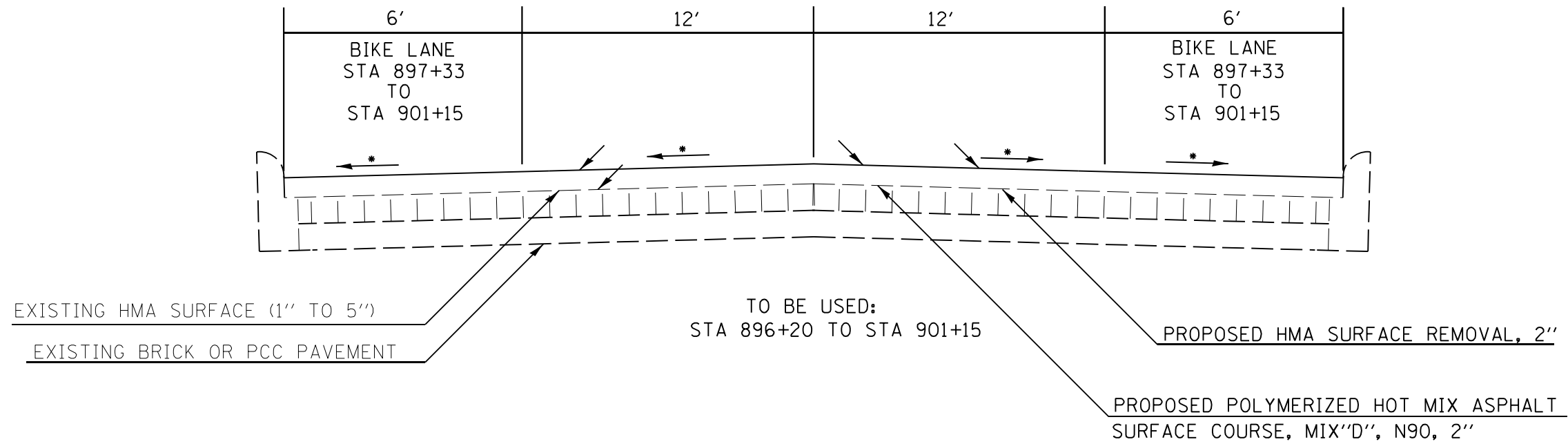
**STATE OF ILLINOIS
DEPARTMENT OF TRANSPORTATION**

PAVEMENT MARKING SCHEDULE 2 OF 2

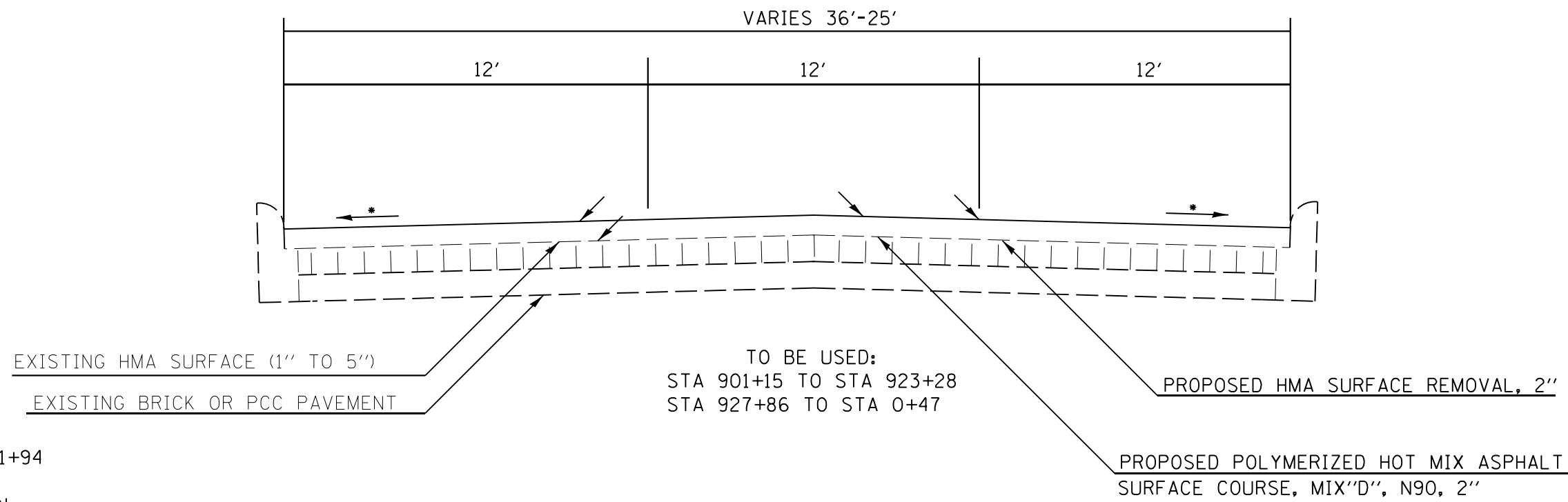
SCALE: SHEET OF SHEETS STA. TO STA.

F.A.P. RTE.	SECTION	COUNTY	TOTAL SHEETS	SHEET NO.
869	(101) RS-7	FRANKLIN	25	13
CONTRACT NO. 78897				
ILLINOIS FED. AID PROJECT				

☺
FAP 869
IL 34



☺
FAP 869
IL 34



OMISSION:
STA 911+51 TO 911+94

STATION EQUATION:
926+09.7 (BK) = 926+12.3 (AH)
948+33 (BK) = 0+00 (AH)

* MATCH EXISTING SLOPE

MODEL NUMBER: 11/11/15
FILE NAME: 869.DWG

USER NAME = SUSERS	DESIGNED -	REVISED -
PLOT SCALE = 5/8"=1'	DRAWN -	REVISED -
PLOT DATE = 5/15/15	CHECKED -	REVISED -
	DATE -	REVISED -

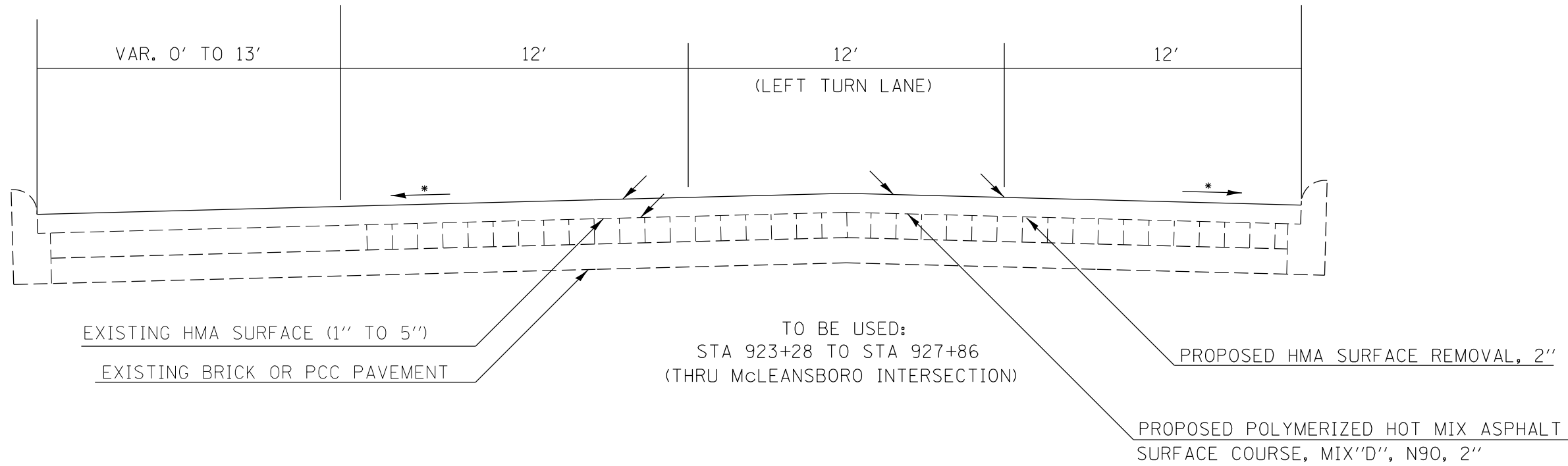
STATE OF ILLINOIS
DEPARTMENT OF TRANSPORTATION

SCALE:		SHEET	OF	SHEETS	STA.	TO	STA.

TYPICALS

F.A.P. RTE.	SECTION	COUNTY	TOTAL SHEETS	SHEET NO.
869	(101) RS-7	FRANKLIN	25	14
CONTRACT NO. 78897				
ILLINOIS FED. AID PROJECT				

FAP 869
IL 34



OMISSION:
STA 911+51 TO 911+94

STATION EQUATION:
926+09.7 (BK) = 926+12.3 (AH)
948+33 (BK) = 0+00 (AH)

* MATCH EXISTING SLOPE

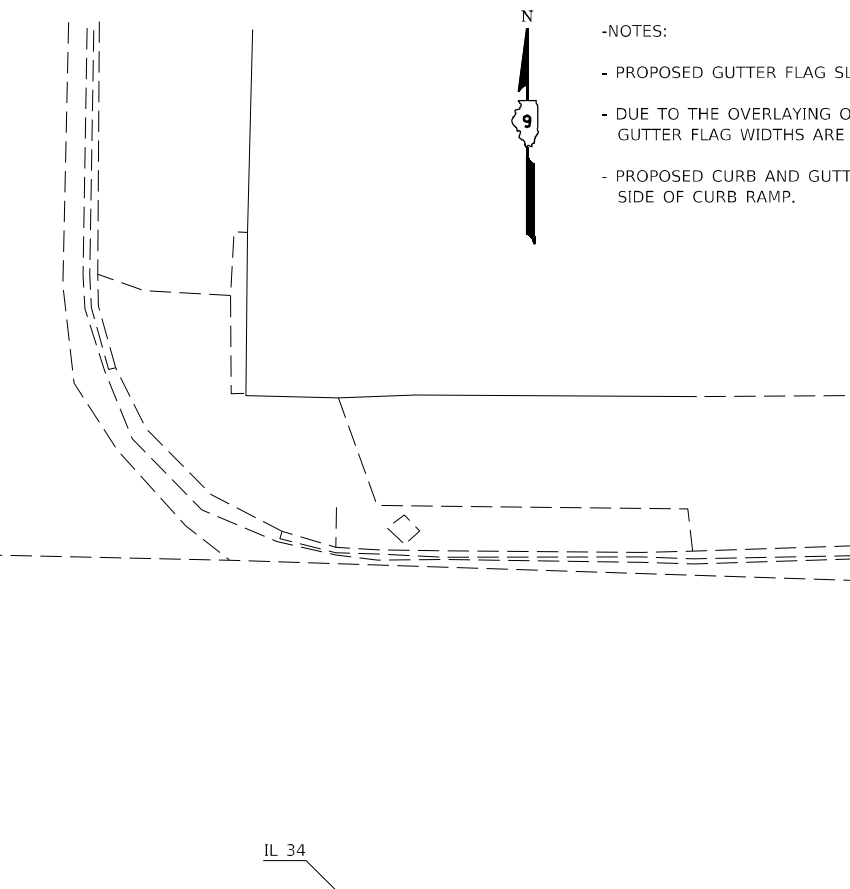
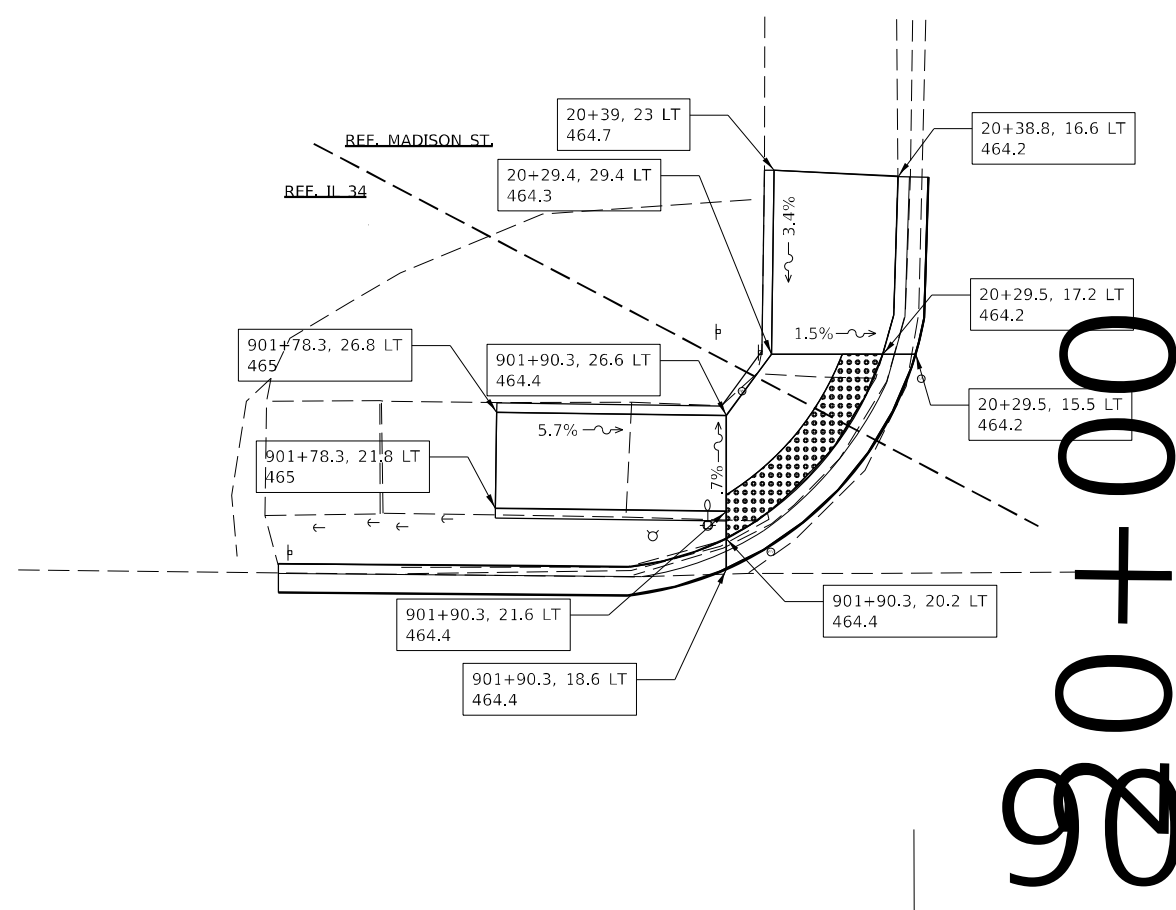
MODEL: Default
 FILE: \\na11e-pw-bu\p\stet-pw-be\p\p\com\p\p\DOT\Documents\DOT Office\Dir\rdt_0\Project\78897\CADD\Drawn\CAD\sheet\0978897-SHB-Typ_Sch_Tile_Creep\kElements.dgn

USER NAME = fowlera	DESIGNED -	REVISED -
	DRAWN -	REVISED -
PLOT SCALE = 10,0000 * / in.	CHECKED -	REVISED -
PLOT DATE = 3/17/2022	DATE -	REVISED -

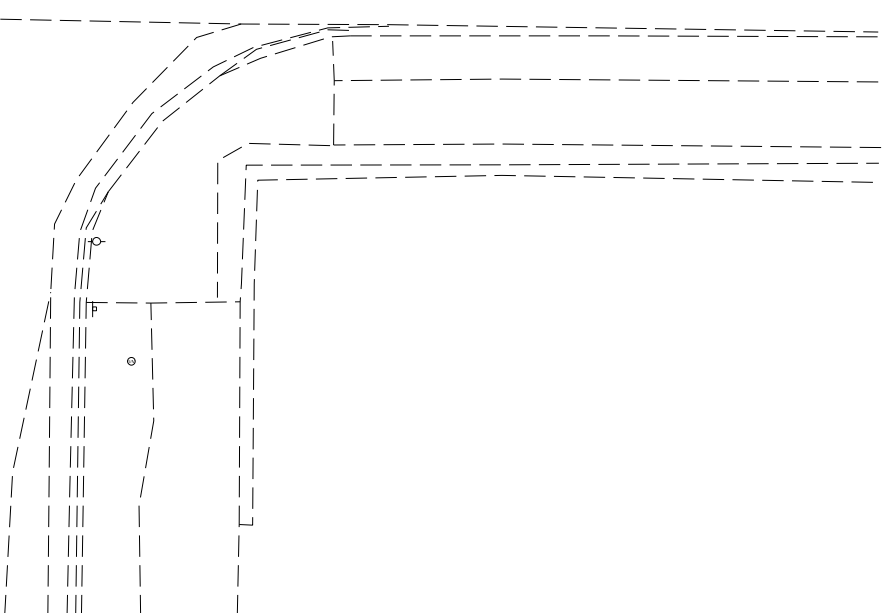
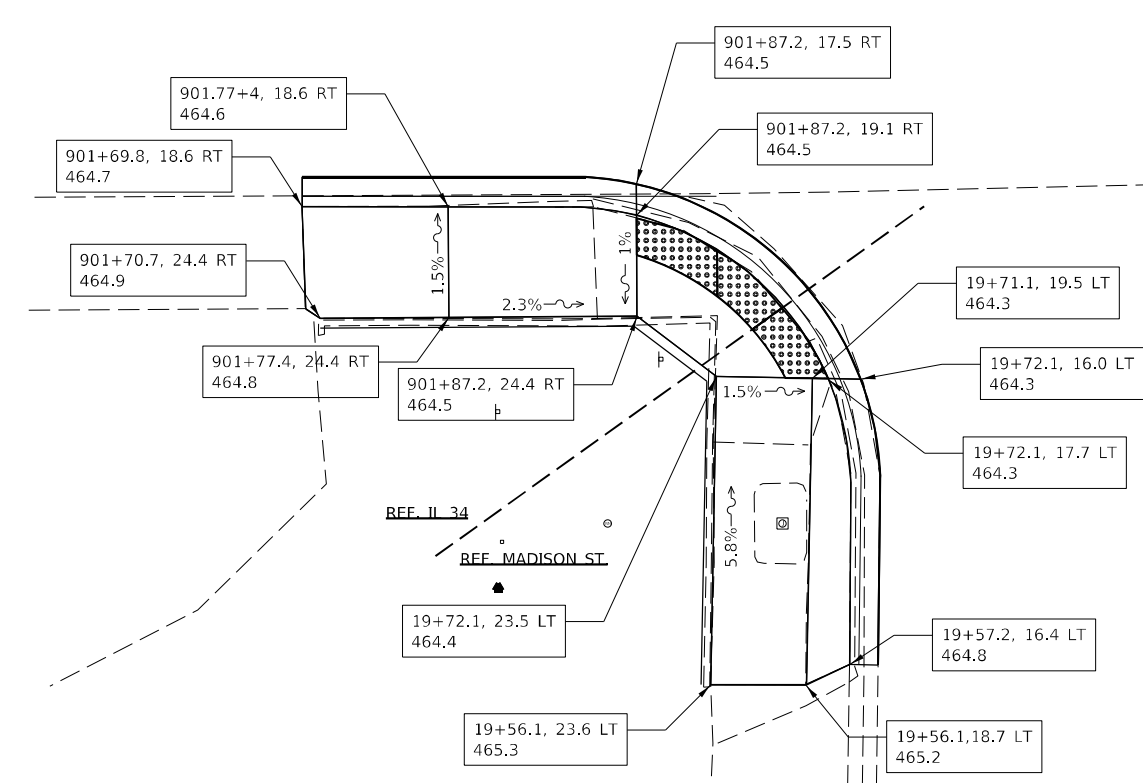
**STATE OF ILLINOIS
DEPARTMENT OF TRANSPORTATION**

SCALE:		TYPICALS	
		SHEET OF SHEETS	STA. TO STA.

F.A.P. RTE. 869	SECTION (101) RS-7	COUNTY FRANKLIN	TOTAL SHEETS 25	SHEET NO. 15
ILLINOIS FED. AID PROJECT			CONTRACT NO. 78897	



- NOTES:
- PROPOSED GUTTER FLAG SLOPES ARE 5% UNLESS OTHERWISE SHOWN.
 - DUE TO THE OVERLAYING OF THE EXISTING PAVEMENT, THE PROPOSED GUTTER FLAG WIDTHS ARE ESTIMATED
 - PROPOSED CURB AND GUTTER TRANSITIONS ARE SHOWN AT 2' EITHER SIDE OF CURB RAMP.



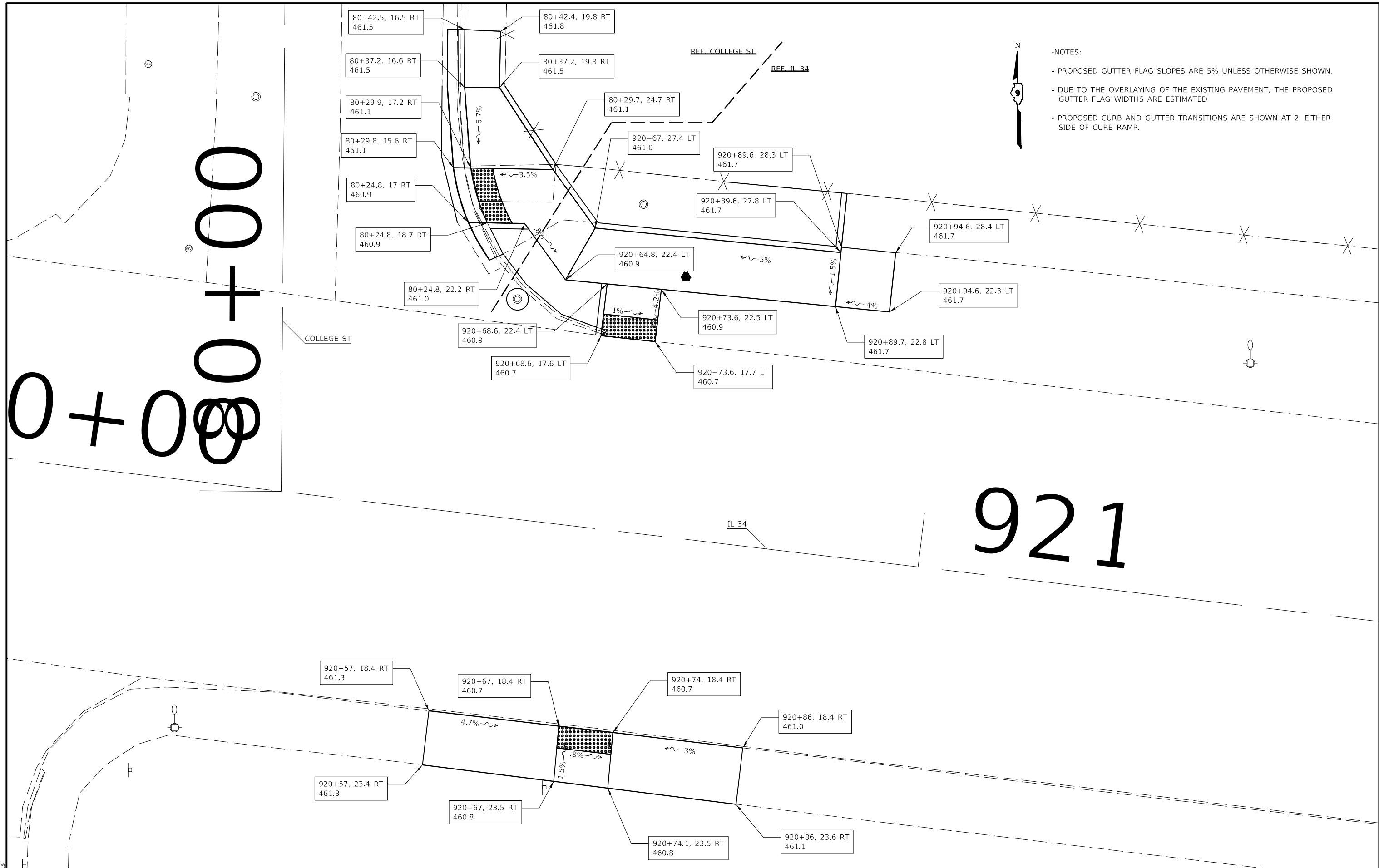
STATE OF ILLINOIS
DEPARTMENT OF TRANSPORTATION

SIDEWALK DETAIL
MADISON ST.

USER NAME = fowlera	DESIGNED -	REVISED -
DRAWN -	REVISED -	REVISED -
PLOT SCALE = 40,0000 * / in.	CHECKED -	REVISED -
PLOT DATE = 3/17/2022	DATE -	REVISED -

SCALE:	SHEET	OF	SHEETS	STA.	TO STA.	F.A.P. RTE.	SECTION	COUNTY	TOTAL SHEETS	SHEET NO.
						869	(101) RS-7	FRANKLIN	25	16
						CONTRACT NO. 78897				
						ILLINOIS FED. AID PROJECT				

MODEL: Default
 FILE: \\nafe-pw-beadley.com\P\DOT\Documents\DOT Office\District 8\Project\78897\CADD\Drawings\90+00\90+02_SidewalkElements.dgn



- NOTES:
- PROPOSED GUTTER FLAG SLOPES ARE 5% UNLESS OTHERWISE SHOWN.
 - DUE TO THE OVERLAYING OF THE EXISTING PAVEMENT, THE PROPOSED GUTTER FLAG WIDTHS ARE ESTIMATED
 - PROPOSED CURB AND GUTTER TRANSITIONS ARE SHOWN AT 2' EITHER SIDE OF CURB RAMP.

MODEL: M000000000000
FILE NAME: 000000

USER NAME = SUSERS	DESIGNED -	REVISED -
PLOT SCALE = 5SCALES	DRAWN -	REVISED -
PLOT DATE = SDATES	CHECKED -	REVISED -
	DATE -	REVISED -

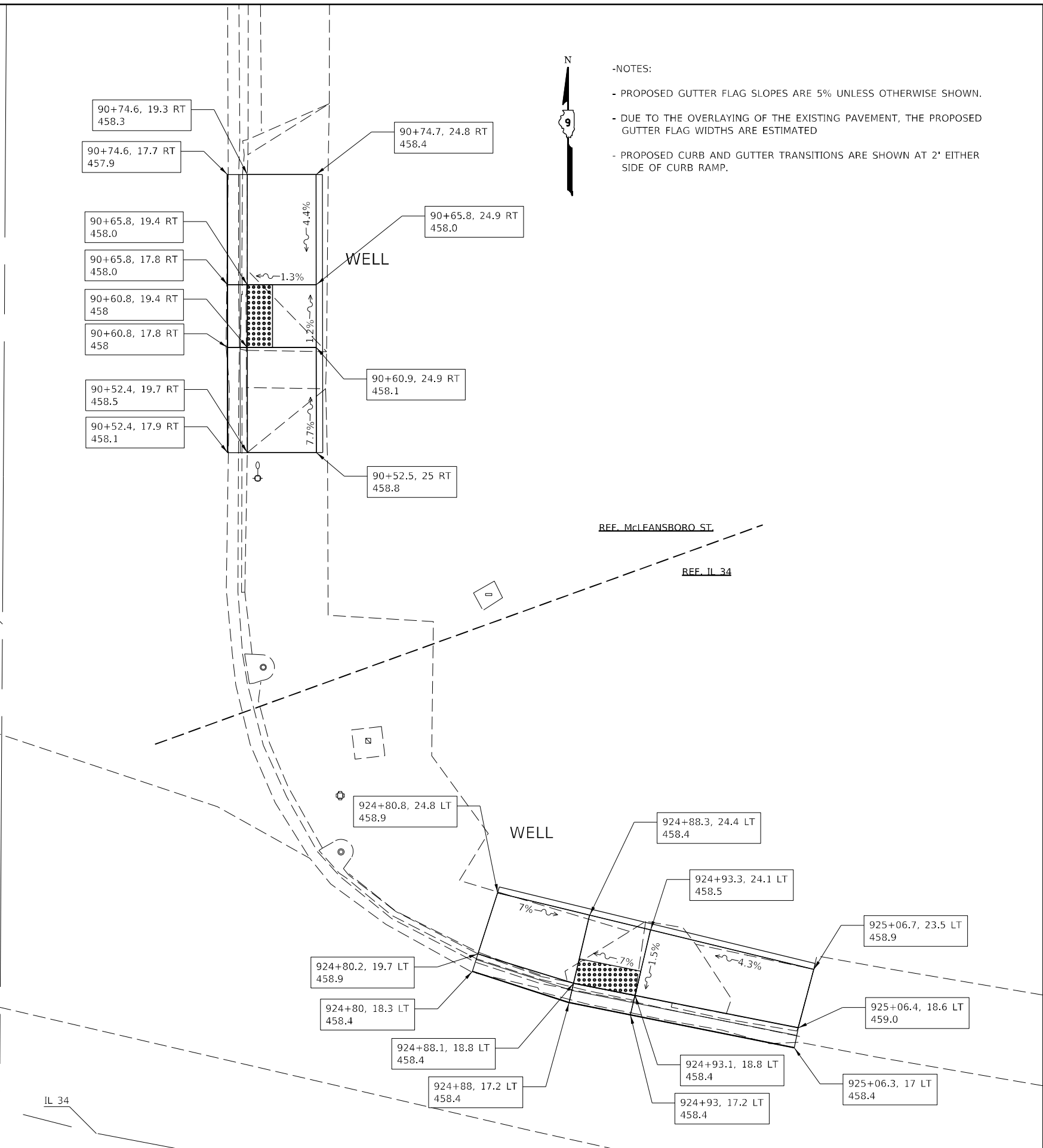
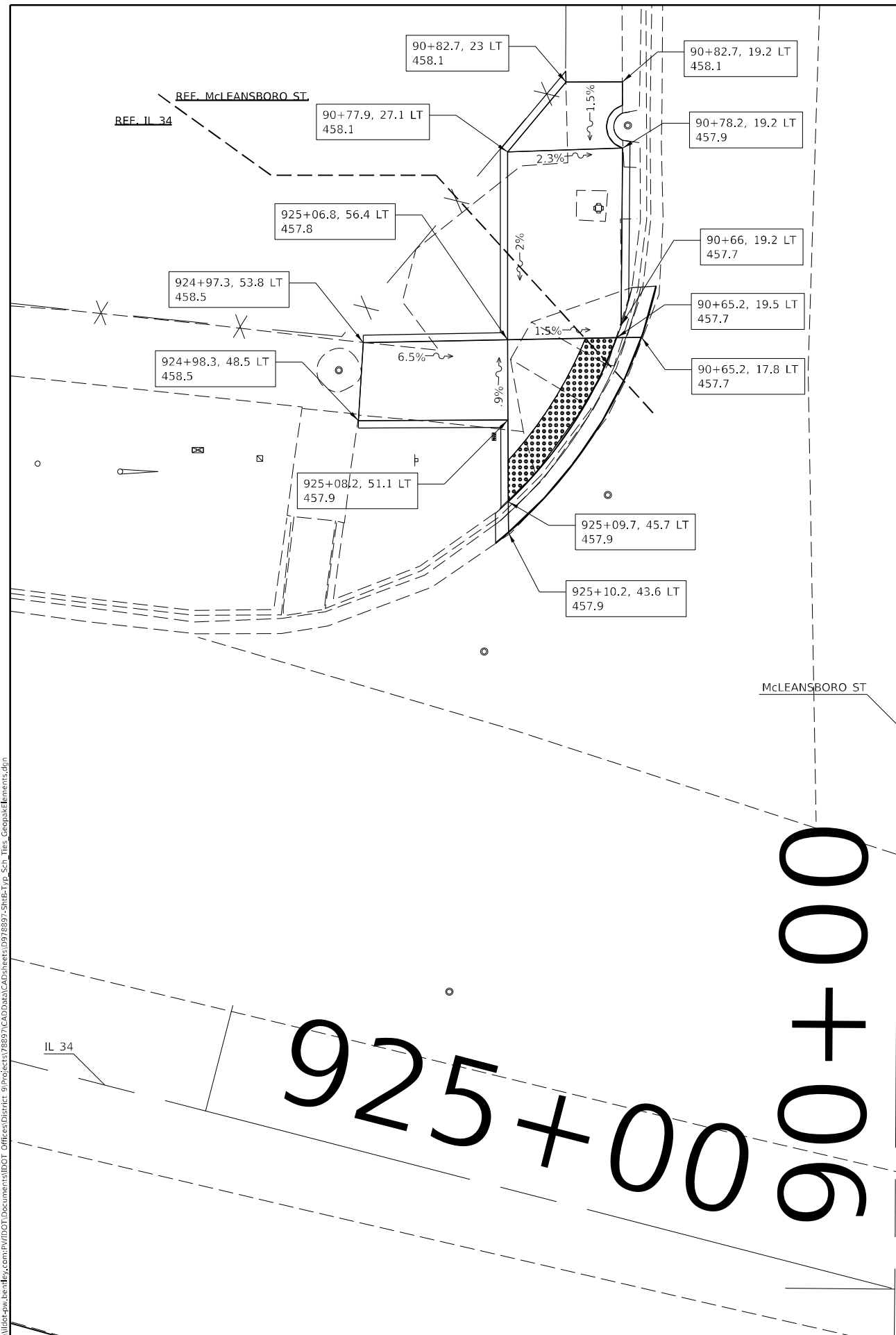
**STATE OF ILLINOIS
DEPARTMENT OF TRANSPORTATION**

**SIDEWALK DETAIL
COLLEGE ST.**

SCALE: SHEET OF SHEETS STA. TO STA.

F.A.P. RTE.	SECTION	COUNTY	TOTAL SHEETS	SHEET NO.
869	(101) RS-7	FRANKLIN	25	17
CONTRACT NO. 78897			ILLINOIS FED. AID PROJECT	

MODEL: Default
 FILE: \\mdepcw.bendley.com\FW\DOT\Documents\DOT Office\District 9\Projects\78897\CADD\Drawings\CAD\Drawings\925+00-90+00_Side_Sch_Tile_Creep\Elements.dgn



- NOTES:**
- PROPOSED GUTTER FLAG SLOPES ARE 5% UNLESS OTHERWISE SHOWN.
 - DUE TO THE OVERLAYING OF THE EXISTING PAVEMENT, THE PROPOSED GUTTER FLAG WIDTHS ARE ESTIMATED
 - PROPOSED CURB AND GUTTER TRANSITIONS ARE SHOWN AT 2' EITHER SIDE OF CURB RAMP.

925+00
 90+00

USER NAME = fowler	DESIGNED -	REVISED -
DRAWN -	REVISED -	
PLOT SCALE = 40,0000' / in.	CHECKED -	REVISED -
PLOT DATE = 3/17/2022	DATE -	REVISED -

STATE OF ILLINOIS
DEPARTMENT OF TRANSPORTATION

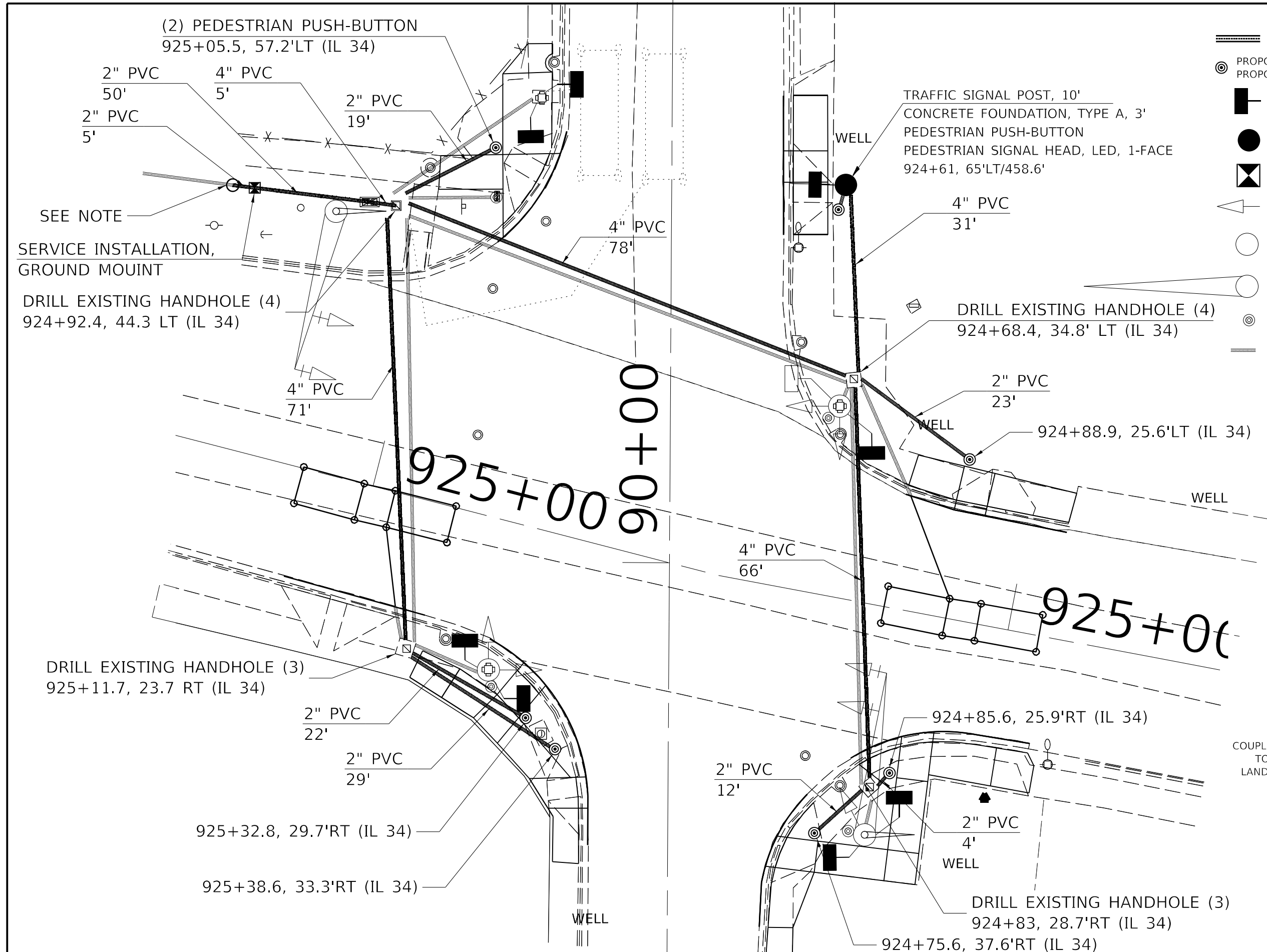
SIDEWALK DETAIL
McLEANSBORO ST.

SCALE: SHEET OF SHEETS STA. TO STA.

F.A.P. RTE.	SECTION	COUNTY	TOTAL SHEETS	SHEET NO.
869	(101) RS-7	FRANKLIN	25	19
CONTRACT NO. 78897				
ILLINOIS FED. AID PROJECT				

LEGEND

- ===== PROPOSED UNDERGROUND CONDUIT, PVC
- ⊙ PROPOSED PEDESTRIAN PUSH BUTTON, PROPOSED PEDESTRIAN PUSH BUTTON POST, TYPE 1
- PROPOSED PEDESTRIAN SIGNAL HEAD, LED, 1-FACE, BRACKET MOUNTED
- TRAFFIC SIGNAL POLE 10'
- ⊠ SERVICE INSTALLATION, GROUND MOUNT
- ◁ EXISTING SIGNAL HEAD
- EXISTING SIGNAL POST
- EXISTING MAST ARM
- ⊙ EXISTING PEDESTRIAN PUSH BUTTON
- ===== EXISTING UNDERGROUND CONDUIT



SEE NOTE
 SERVICE INSTALLATION,
 GROUND MOUNT
 DRILL EXISTING HANDHOLE (4)
 924+92.4, 44.3 LT (IL 34)

DRILL EXISTING HANDHOLE (3)
 925+11.7, 23.7 RT (IL 34)

925+32.8, 29.7'RT (IL 34)

925+38.6, 33.3'RT (IL 34)

TRAFFIC SIGNAL POST, 10'
 CONCRETE FOUNDATION, TYPE A, 3'
 PEDESTRIAN PUSH-BUTTON
 PEDESTRIAN SIGNAL HEAD, LED, 1-FACE
 924+61, 65'LT/458.6'

DRILL EXISTING HANDHOLE (4)
 924+68.4, 34.8' LT (IL 34)

924+85.6, 25.9'RT (IL 34)

DRILL EXISTING HANDHOLE (3)
 924+83, 28.7'RT (IL 34)

NOTES:
 INTERCEPT EXISTING SERVICE CONDUIT,
 COUPLE EXISTING CODUIT WITH PROPOSED CONDUIT
 TO NEW GROUND MOUNT SERVICE CABINET,
 LAND EXISTING SERVICE CABLE TO NEW SERVICE.



MODEL NUMBER: MAMTMS
FILE NAME: 816125

USER NAME = SUSERS	DESIGNED -	REVISED -
PLOT SCALE = 5/8"=1'	DRAWN -	REVISED -
PLOT DATE = 5/24/25	CHECKED -	REVISED -
	DATE -	REVISED -

STATE OF ILLINOIS
 DEPARTMENT OF TRANSPORTATION

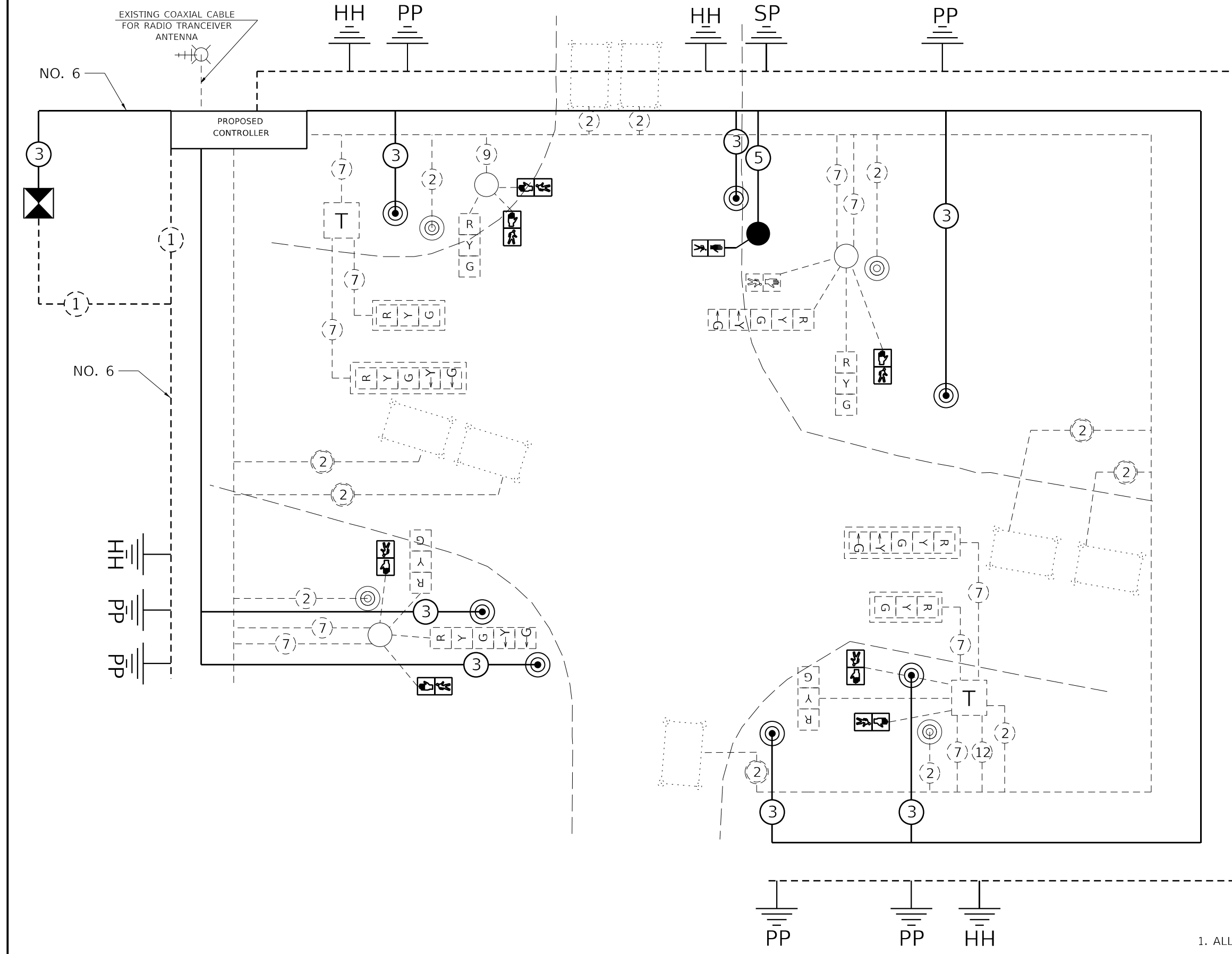
TRAFFIC SIGNAL PLANS
 IL 34 / McLEANSBORO ST

SCALE: SHEET OF SHEETS STA. TO STA.

F.A.P. RTE.	SECTION	COUNTY	TOTAL SHEETS	SHEET NO.
869	(101) RS-7	FRANKLIN	25	20
ILLINOIS FED. AID PROJECT			CONTRACT NO. 78897	

LEGEND

- PROPOSED CABLE
- ⑤ NUMBER IN CIRCLE INDICATES NUMBER OF CONDUCTORS IN THAT CABLE
- ☒ PROPOSED PEDESTRIAN SIGNAL HEAD
- ⊙ PROPOSED PEDESTRIAN PUSH BUTTON
- ⊠ SERVICE INSTALLATION, GROUND MOUNT
- - - EXISTING CABLE
- ② NUMBER IN CIRCLE INDICATES NUMBER OF CONDUCTORS IN EXISTING CABLE
- ② EXISTING 2/C TWISTED, SHIELDED CABLE IN CONDUIT
- EXISTING SIGNAL POLE
- T EXISTING TERMINAL BLOCK IN MAST ARM
- ☒ EXISTING SIGNAL HEAD WITH BACK PLATE
- ☒ EXISTING SIGNAL HEAD
- ⊙ EXISTING PEDESTRIAN PUSH BUTTON



NOTES

1. ALL CABLES SHALL BE A.W.G. #14 UNLESS OTHERWISE NOTED
2. ELECTRIC SERVICE IS SUPPLIED BY AMEREN CIPS

MODEL NAME: MAMTMS
FILE NAME: 81815

USER NAME = SUSERS	DESIGNED -	REVISED -
DRAWN -	REVISOR -	
PLOT SCALE = 5SCALES	CHECKED -	REVISED -
PLOT DATE = SDATES	DATE -	REVISED -

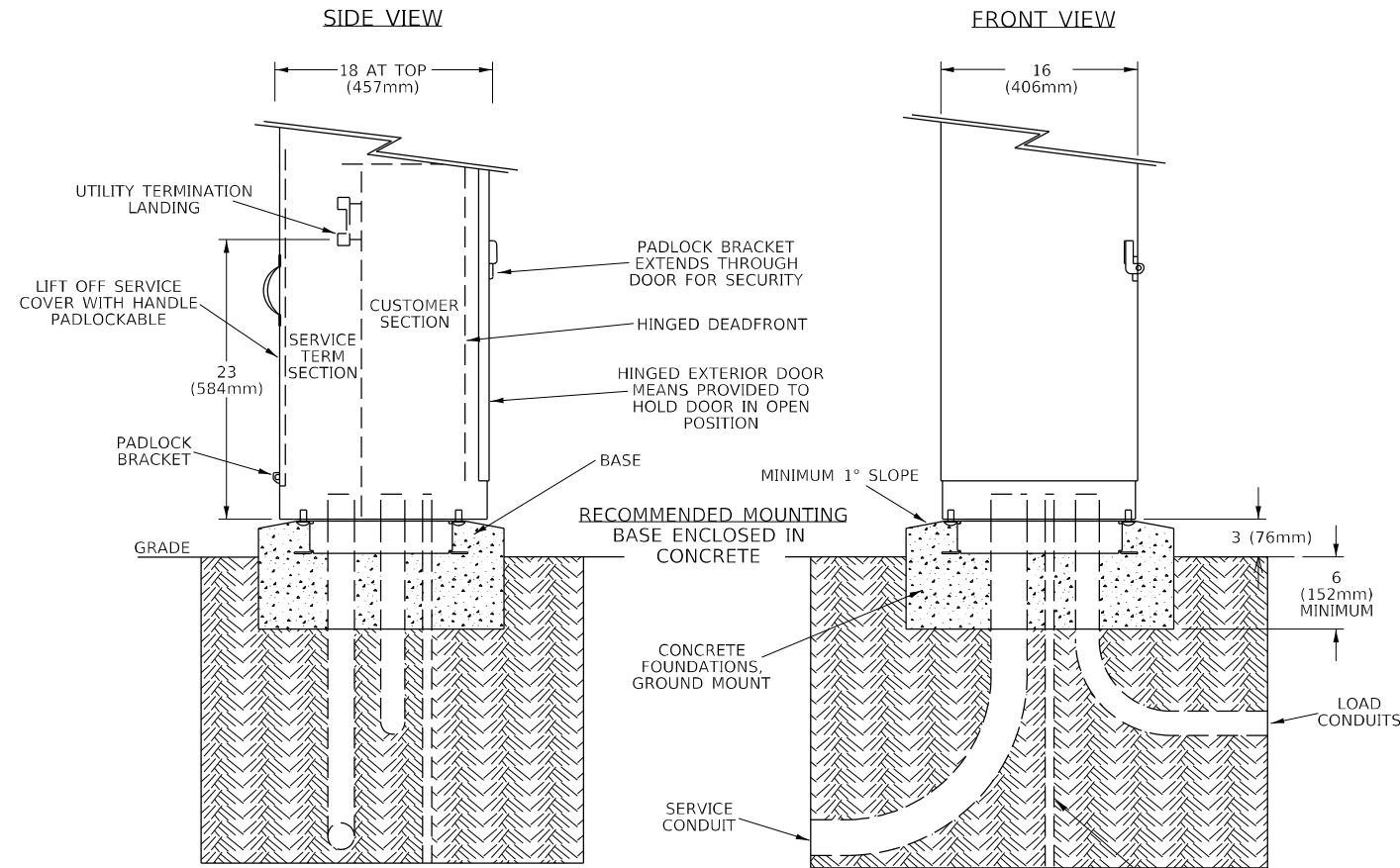
STATE OF ILLINOIS
DEPARTMENT OF TRANSPORTATION

TRAFFIC SIGNAL WIRING DIAGRAM

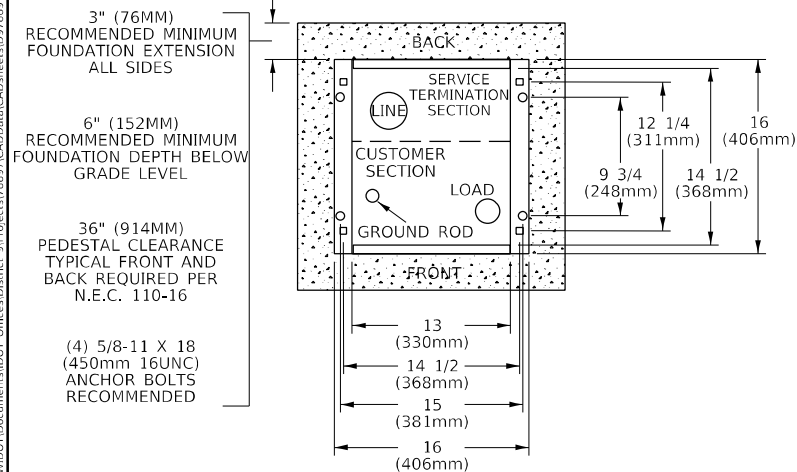
SCALE: SHEET OF SHEETS STA. TO STA.

F.A.P. RTE.	SECTION	COUNTY	TOTAL SHEETS	SHEET NO.
869	(101) RS-7	FRANKLIN	25	21
CONTRACT NO. 78897				
ILLINOIS FED. AID PROJECT				

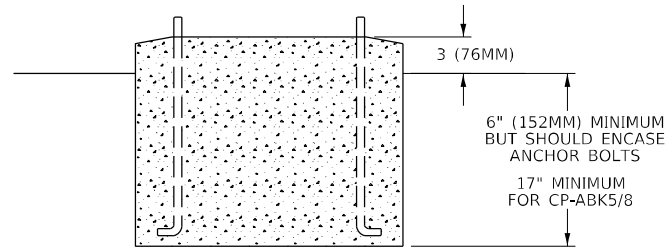
**CABINET FOR SERVICE INSTALLATION, GROUND MOUNT
AND CONCRETE FOUNDATIONS, GROUND MOUNT**



MOUNTING BASE DETAIL (TOP VIEW)



OPTIONAL MOUNTING NO BASE, MOUNT DIRECTLY ON FOUNDATION

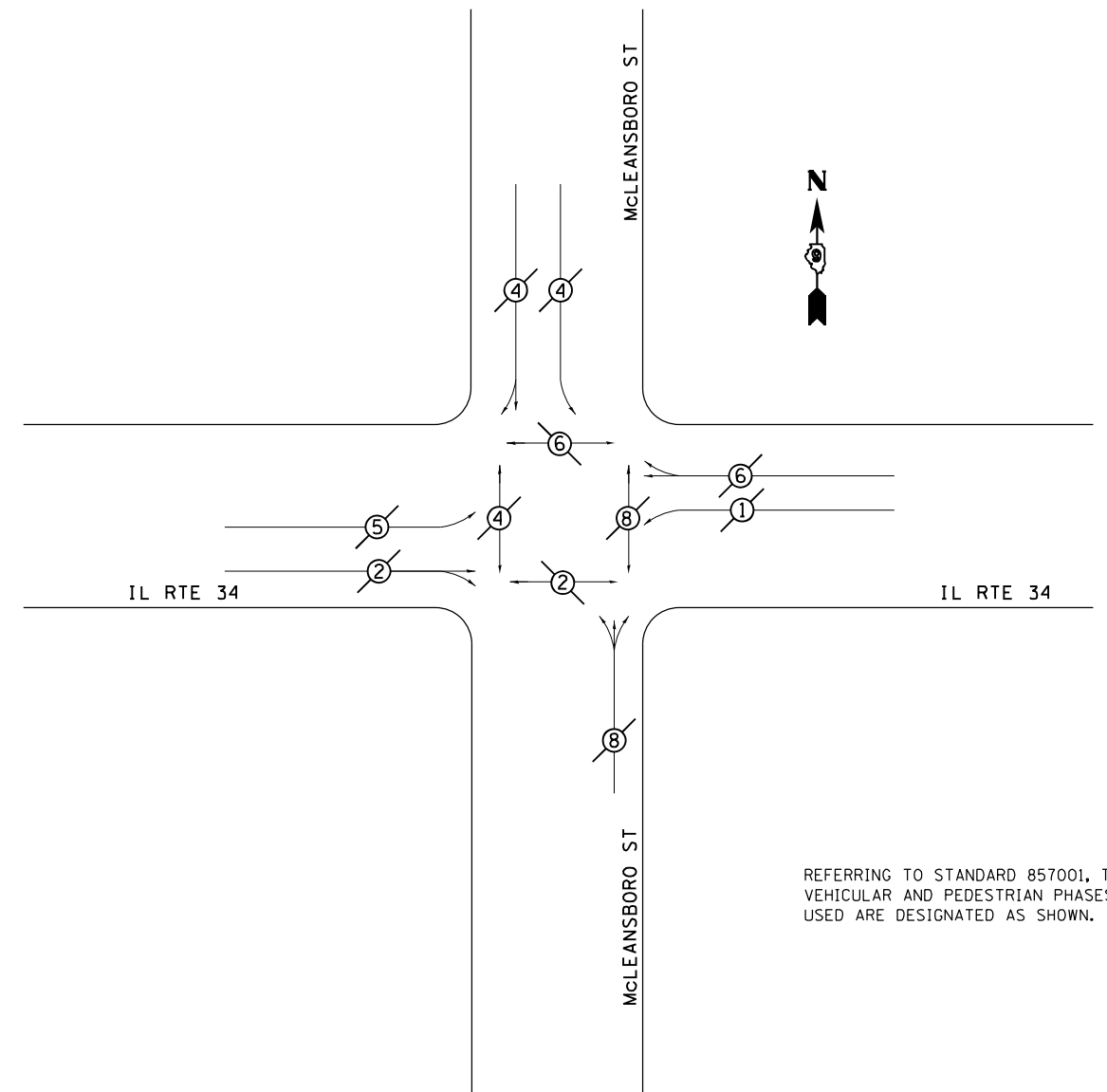


REVISIONS

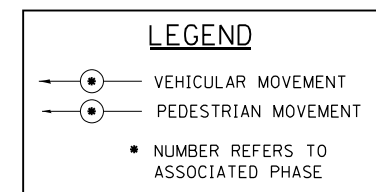
DRAWN	03-02-22
REVISED	
REVISED	
REVISED	

STD. 9-51

**PHASE DESIGNATION DIAGRAM
IL RTE 34 WITH McLEANSBORO ST**



REFERRING TO STANDARD 857001, THE VEHICULAR AND PEDESTRIAN PHASES USED ARE DESIGNATED AS SHOWN.



MODEL: Default
 FILE: 3dmodel.pwd
 PROJECT: 78897\CADD\Drawings\DOT Office\Drawings\978897-518-Typ_Sch_Tile_CeapackElements.dgn
 PLOT DATE: 3/17/2022

USER NAME = fowler	DESIGNED -	REVISED -
PLOT SCALE = 40,0000 * / in.	DRAWN -	REVISED -
PLOT DATE = 3/17/2022	CHECKED -	REVISED -
	DATE -	REVISED -

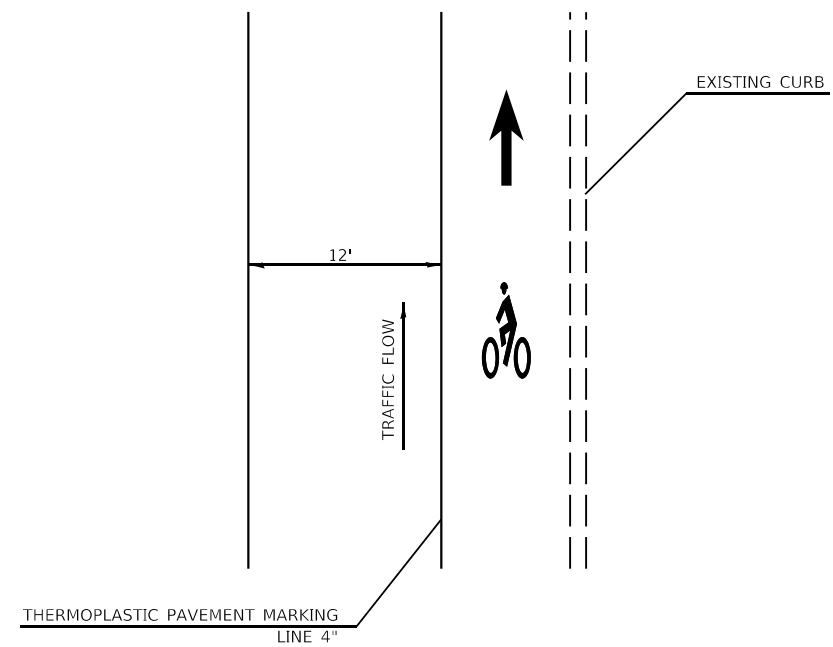
**STATE OF ILLINOIS
DEPARTMENT OF TRANSPORTATION**

**GROUND SERVICE DETAIL
PHASE DESIGNATION DIAGRAM**

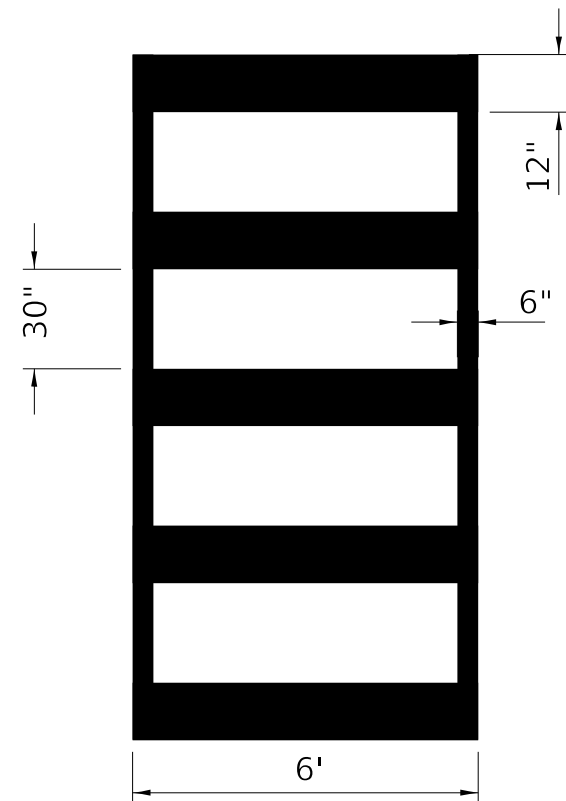
SCALE: SHEET OF SHEETS STA. TO STA.

F.A.P. RTE.	SECTION	COUNTY	TOTAL SHEETS	SHEET NO.
869	(101) RS-7	FRANKLIN	25	22
CONTRACT NO. 78897				
ILLINOIS FED. AID PROJECT				

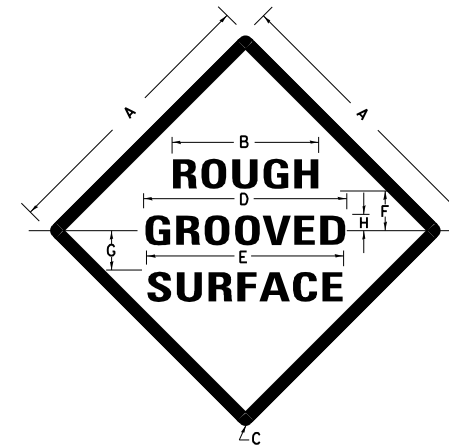
BIKE LANE DETAIL



CROSSWALK PAVEMENT MARKING



ILLINOIS STANDARD



COLORS:

LEGEND AND BORDER- BLACK NON-REFLECTORIZED
BACKGROUND- ORANGE REFLECTORIZED

SIGN SIZE	DIMENSIONS							
	A	B	C	D	E	F	G	H
48X48	48.0	24.1	3.0	34.0	33.0	6.0	13.0	3.5

SIGN SIZE	SERIES LINES			MAR-GIN	BOR-DER	BLANK STD.
	1	2	3			
48X48	7C	7C	7C	0.8	1.2	B4-48D

ALL DIMENSIONS IN INCHES

NOTES:

PRIOR TO ALLOWING TRAFFIC ON ANY PORTION OF THE ROADWAY THAT HAS BEEN COLDMILLED, THE CONTRACTOR SHALL HAVE ERECTED "ROUGH GROOVED SURFACE" SIGNS THAT CONFORM TO THE ABOVE DETAILS. A MINIMUM OF ONE SIGN AT EACH END OF THE IMPROVEMENT WILL BE REQUIRED. THE CONTRACTOR SHALL MAINTAIN THE "ROUGH GROOVED SURFACE" SIGNS UNTIL THE COLDMILLED SURFACE IS COVERED WITH LEVELING BINDER OR SURFACE COURSE.

IF AT ANY TIME THE SIGNS ARE IN PLACE BUT NOT APPLICABLE, THEY SHALL BE TURNED FROM THE VIEW OF MOTORISTS OR COVERED AS DIRECTED BY THE ENGINEER.

THE COST OF FURNISHING, ERECTING, MAINTAINING, AND REMOVING THE REQUIRED SIGNS SHALL BE INCLUDED IN THE CONTRACT.

REVISIONS

REDRAWN	2-15-89
REVISED	4-6-93
REVISED	3-27-08
REVISED	5-17-13

STD. 9-39

STATE OF ILLINOIS
DEPARTMENT OF TRANSPORTATION

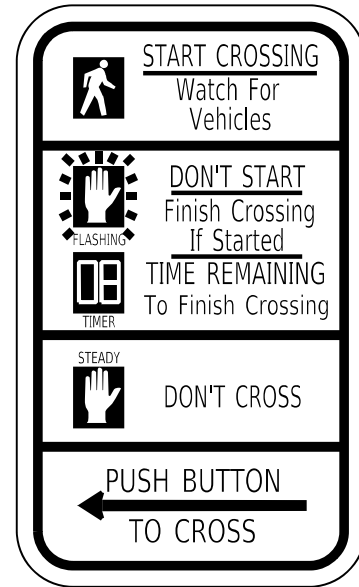
BIKE LANE DETAIL, CROSSWALK, ROUGH
GROOVED SURFACE DETAIL

SCALE: SHEET OF SHEETS STA. TO STA.

F.A.P. RTE.	SECTION	COUNTY	TOTAL SHEETS	SHEET NO.
869	(101) RS-7	FRANKLIN	25	24
ILLINOIS FED. AID PROJECT			CONTRACT NO. 78897	

USER NAME = SUSERS	DESIGNED -	REVISED -
PLOT SCALE = 5SCALES	DRAWN -	REVISED -
PLOT DATE = SDATES	CHECKED -	REVISED -
	DATE -	REVISED -

R10-3e
PEDESTRIAN SIGNAL INFORMATION (COUNTDOWN)



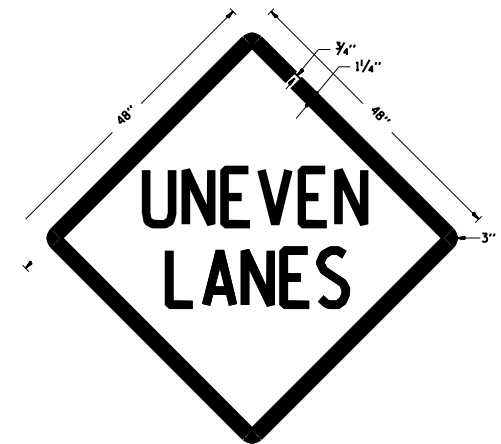
-ACCESSIBLE PEDESTRIAN PUSH-BUTTON SIGNS SHALL BE MOUNTED ABOVE THE ACCESSIBLE PEDESTRIAN PUSH-BUTTON, THE SIGN SHALL BE BOLTED TO THE POSTS.

-COST OF REQUIRED SIGNS WILL BE CONSIDERED INCIDENTAL TO THE COST OF THE ACCESSIBLE PEDESTRIAN SIGNALS

STD. 9-112

REVISIONS	
DRAWN	03-03-22
REVISED	
REVISED	
REVISED	

UNEVEN LANES SIGN
W8-11 (48" x 48")



COLORS:
 LEGEND AND BORDER - BLACK NON-REFLECTORIZED
 BACKGROUND - ORANGE REFLECTORIZED

NOTE: PRIOR TO ALLOWING TRAFFIC ON ANY PORTION OF THE ROADWAY THAT HAS BEEN COLDMILLED OR BEFORE RESURFACING OPERATIONS BEGIN, THE CONTRACTOR SHALL HAVE ERECTED "UNEVEN PAVEMENT" SIGNS THAT CONFORM TO THE ABOVE DETAILS. A MINIMUM OF ONE SIGN AT EACH END OF THE IMPROVEMENT WILL BE REQUIRED. THE CONTRACTOR SHALL MAINTAIN THE "UNEVEN PAVEMENT" SIGNS UNTIL THE RESURFACING OPERATIONS ARE COMPLETED.

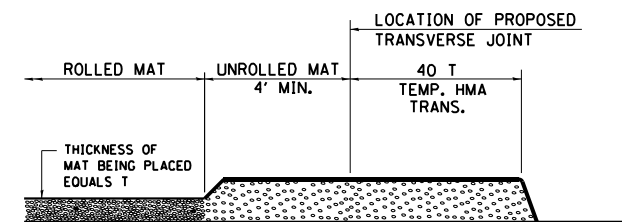
IF AT ANY TIME THE SIGNS ARE IN PLACE BUT NOT APPLICABLE, THEY SHALL BE TURNED FROM THE VIEW OF MOTORISTS OR COVERED AS DIRECTED BY THE ENGINEER.

THE COST OF FURNISHING, ERECTING, MAINTAINING, AND REMOVING THE REQUIRED SIGNS SHALL BE INCLUDED IN THE CONTRACT.

REVISIONS	
DRAWN	2-15-89
REVISED	4-06-93
REDESIGNED	7-23-04
RESIZED	5-08-08
REVIEWED	5-17-13

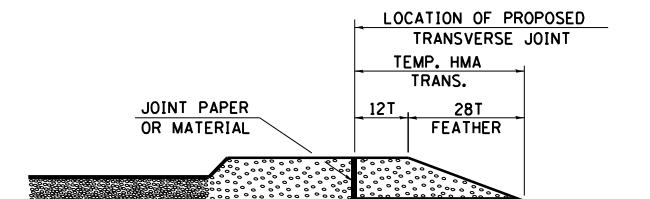
STD. 9-41

TEMPORARY HOT-MIX ASPHALT TRANSITIONS



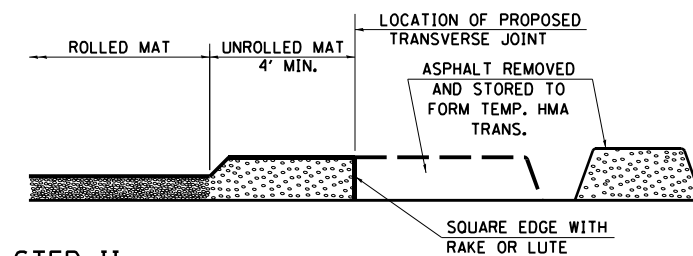
STEP I

1. PLACE HOT-MIX ASPHALT MAT, LENGTH 40 TIMES THE THICKNESS OF THE MAT BEING PLACED PAST THE PROPOSED TRANSVERSE JOINT LOCATION USING NORMAL OPERATING PROCEDURES.
2. EXTREME CARE SHOULD BE TAKEN TO MAINTAIN ENOUGH MATERIAL IN FRONT OF THE SCREED TO MAINTAIN REQUIRED PAVING DEPTH.



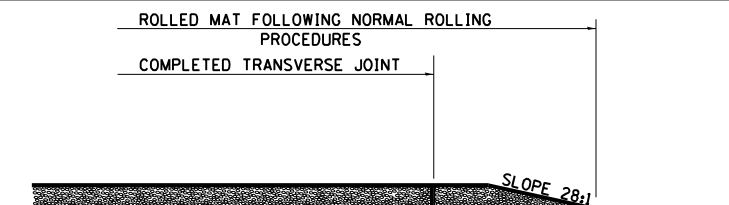
STEP III

1. JOINT PAPER OR OTHER PRESELECTED JOINT MATERIAL IS THEN PLACED IN THE CLEARED AREA AND THE EXCESS ASPHALT USED TO HAND FORM A TRANSITION TO THE DIMENSIONS SHOWN ABOVE.
2. NOTE THAT IN CONSTRUCTING THE TRANSITION, THE MAT DEPTH IS CONTINUED AS PART OF THE TRANSITION BEFORE FORMING THE FEATHER.



STEP II

1. MOVE THE PAVER OUT OF THE WAY AND REMOVE THE ASPHALT FROM THE AREA OF THE PROPOSED TEMPORARY HOT-MIX ASPHALT TRANSITION.
2. SQUARE UP THE END OF THE MAT WITH A RAKE OR LUTE.
3. NOTE THAT THE MAT WITHIN 4' OF THE END OF JOINT IS NOT TO BE ROLLED AT THIS TIME.



STEP IV

1. COMPLETE TEMPORARY TRANSITION BY ROLLING.
2. TO RESUME PAVING, AT THE JOINT, REMOVE TEMPORARY TRANSITION AND DISPOSE OF THE MATERIAL ACCORDING TO ART. 202.03 OF THE STD. SPECS. (COST INCLUDED IN THE CONTRACT).
3. CONSTRUCTING THE TEMPORARY TRANSITIONS WILL NOT BE PAID FOR SEPARATELY IN ACCORDANCE WITH ARTICLE 406.14 OF THE STANDARD SPECIFICATIONS.

STD. 9-26

REVISIONS	
REDRAWN	2-15-89
REVISED	8-16-94
REVISED	01-09-07
RESIZED	05-8-08
REVISED	05-16-13

MODEL NUMBER MATES
 FILE NUMBER: 001015

USER NAME = SUSERS	DESIGNED -	REVISED -
	DRAWN -	REVISED -
PLOT SCALE = SSCALES	CHECKED -	REVISED -
PLOT DATE = SDATES	DATE -	REVISED -

STATE OF ILLINOIS
DEPARTMENT OF TRANSPORTATION

APS SIGN, UNEVEN LANE, HMA TRANSITION DETAIL

SCALE: SHEET OF SHEETS STA. TO STA.

F.A.P. RTE.	SECTION	COUNTY	TOTAL SHEETS	SHEET NO.
869	(101) R5-7	FRANKLIN	25	25
				CONTRACT NO. 78897
		ILLINOIS FED. AID PROJECT		