

06-17-2022 LETTING ITEM 175

STATE OF ILLINOIS
DEPARTMENT OF TRANSPORTATION

F.A. RTE.	SECTION	COUNTY	TOTAL SHEETS	SHEET NO.
	D1 HT PVMNT MRK RPR 23-05	VARIOUS	*	1
ILLINOIS			CONTRACT NO. 46595	

- INDEX OF SHEETS:**
 1. COVER SHEET
 2. STATE STANDARDS
 3. SUMMARY OF QUANTITIES 1
 4. SUMMARY OF QUANTITIES 2

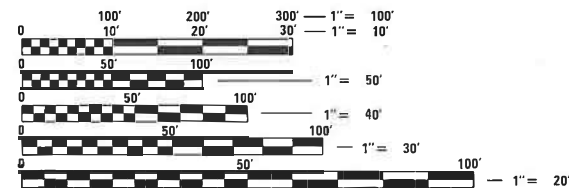
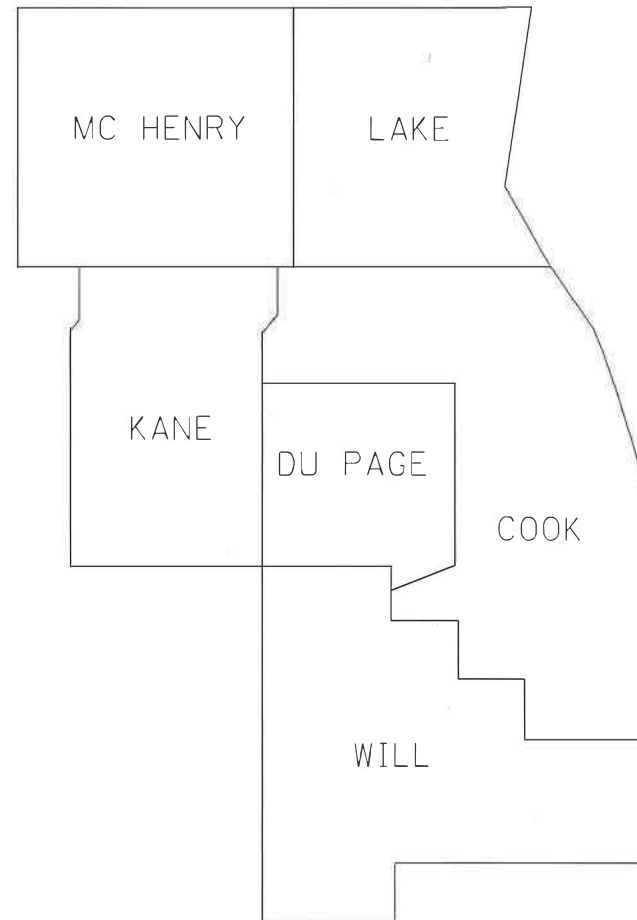
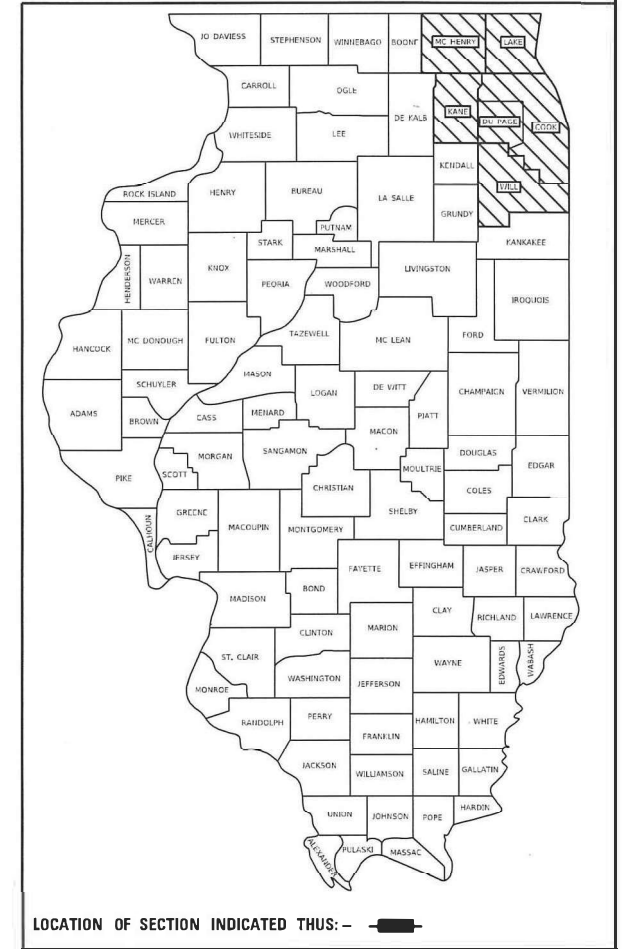
STATE STANDARDS

- 701301-04 LANE CLOSURE 2L,2W, SHORT TIME OPERATIONS
 701311-03 LANE CLOSURE 2L,2W, MOVING OPERATIONS-DAY ONLY
 701426-09 LANE CLOSURE, MULTILANE, INTERMITTENT OR MOVING OPERATION FOR SPEEDS > 45MPH
 701427-05 LANE CLOSURE, MULTILANE, INTERMITTENT OR MOVING OPERATION FOR SPEEDS < 40MPH
 701901-08 TRAFFIC CONTROL DEVICES

**PROPOSED
HIGHWAY PLANS**

**VARIOUS ROUTES
SECTION D1 HT PVMNT MRK RPR 23-05
HIGH TYPE PAVEMENT MARKING
VARIOUS COUNTIES
M-60-005-23**

D-1



FULL SIZE PLANS HAVE BEEN PREPARED USING STANDARD ENGINEERING SCALES. REDUCED SIZED PLANS WILL NOT CONFORM TO STANDARD SCALES. IN MAKING MEASUREMENTS ON REDUCED PLANS, THE ABOVE SCALES MAY BE USED.

J.U.L.I.E.
 JOINT UTILITY LOCATION INFORMATION FOR EXCAVATION
 1-800-892-0123
 OR 811

CONTRACT NO. 46595

STATE OF ILLINOIS
 DEPARTMENT OF TRANSPORTATION

SUBMITTED April 13, 2022
Jose Rios
 REGIONAL ENGINEER

May 13, 2022
Scott A. Etk
 ENGINEER OF DESIGN AND ENVIRONMENT

May 13, 2022
Stephen M. Lewis
 DIRECTOR OF HIGHWAYS PROJECT IMPLEMENTATION

**PRINTED BY THE AUTHORITY
OF THE STATE OF ILLINOIS**

STATE STANDARDS

STANDARD#	DESCRIPTION
701311-03	LANE CLOSURE 2L,2W MOVING OPERATIONS-DAY ONLY
701426-09	LANE CLOSURE, MULTILANE, INTERMITTENT OR MOVING OPERATION FOR SPEEDS \geq 45MPH
701501-06	URBAN LANE CLOSURE 2L,2W, UNDIVIDED
701601-09	URBAN LANE CLOSURE, MULTILANE 1W R 2W WITH NONTRAVERSABLE MEDIAN
701606-10	URBAN SINGLE LANE CLOSURE, MULTILANE, 2W WITH MOUTABLE MEDIAN
701701-10	URBAN LANE CLOSURE, MULTILANE INTERSECTION
701901-08	TRAFFIC CONTROL DEVICES

MODEL: Default
FILE NAME: S:\S\CONTRACTS\CAD\CoverSheets for_Contracts.dgn

USER NAME = GONZALEZDJR	DESIGNED -	REVISED -
	DRAWN -	REVISED -
PLOT SCALE = 102.7592 ' / in.	CHECKED -	REVISED -
PLOT DATE = 3/22/2022	DATE -	REVISED -

**STATE OF ILLINOIS
DEPARTMENT OF TRANSPORTATION**

STATE STANDARDS

SCALE: SHEET 2 OF 4 SHEETS STA. TO STA.

F.A. RTE.	SECTION	COUNTY	TOTAL SHEETS	SHEET NO.
D1 HT Pvmnt Mrk RPR 23-05		VARIOUS	4	2
CONTRACT NO. 46595				
ILLINOIS FED. AID PROJECT				

SUMMARY OF QUANTITIES

CODE NO.	ITEM	UNIT	TOTAL QUANTITY	CONSTRUCTION CODE PAVEMENT MARKING 100% STATE ROADWAY 0021
78000100	THERMOPLASTIC PAVEMENT MARKING - LETTERS AND SYMBOLS	SQ FT	50,000	50,000
78000200	THERMOPLASTIC PAVEMENT MARKING - LINE 4"	FOOT	400,000	400,000
78000400	THERMOPLASTIC PAVEMENT MARKING - LINE 6"	FOOT	200,000	200,000
78000500	THERMOPLASTIC PAVEMENT MARKING - LINE 8"	FOOT	30,000	30,000
78000600	THERMOPLASTIC PAVEMENT MARKING - LINE 12"	FOOT	50,000	50,000
78000620	THERMOPLASTIC PAVEMENT MARKING - LINE 18"	FOOT	200	200
78000650	THERMOPLASTIC PAVEMENT MARKING - LINE 24"	FOOT	20,000	20,000
78004635	PREFORMED PLASTIC PAVEMENT MARKING, TYPE D - LINE 7"	FOOT	20,000	20,000
78006100	PREFORMED THERMOPLASTIC PAVEMENT MARKING - LETTERS AND SYMBOLS	SQ FT	1,500	1,500
78006110	PREFORMED THERMOPLASTIC PAVEMENT MARKING - LINE 4"	FOOT	2,000	2,000
78006130	PREFORMED THERMOPLASTIC PAVEMENT MARKING - LINE 6"	FOOT	1,000	1,000
78006140	PREFORMED THERMOPLASTIC PAVEMENT MARKING - LINE 8"	FOOT	500	500
78006150	PREFORMED THERMOPLASTIC PAVEMENT MARKING - LINE 12"	FOOT	1,000	1,000
78006164	PREFORMED THERMOPLASTIC PAVEMENT MARKING - LINE 18"	FOOT	200	200
78006180	PREFORMED THERMOPLASTIC PAVEMENT MARKING - LINE 24"	FOOT	500	500

MODEL: Default
FILE NAME: S:\S\Contract\CAD\CoverSheets for Contract.dgn

USER NAME = GONZALEZDJR
PLOT SCALE = 102.7592' / in.
PLOT DATE = 3/22/2022

DESIGNED -
DRAWN -
CHECKED -
DATE -

REVISED -
REVISED -
REVISED -
REVISED -

**STATE OF ILLINOIS
DEPARTMENT OF TRANSPORTATION**

SUMMARY OF QUANTITIES 1

SCALE: SHEET 3 OF 4 SHEETS STA. TO STA.

F.A. RTE.	SECTION	COUNTY	TOTAL SHEETS	SHEET NO.
	D1 HT Pvmnt Mrk RPR 23-05	VARIOUS	4	3
			CONTRACT NO. 46595	
ILLINOIS FED. AID PROJECT				

SUMMARY OF QUANTITIES

CODE NO.	ITEM	UNIT	TOTAL QUANTITY	CONSTRUCTION CODE PAVEMENT MARKING 100% STATE ROADWAY 0021
78009000	MODIFIED URETHANE PAVEMENT MARKING - LETTERS AND SYMBOLS	SQ FT	50,000	50,000
78009004	MODIFIED URETHANE PAVEMENT MARKING - LINE 4"	FOOT	650,000	650,000
78009006	MODIFIED URETHANE PAVEMENT MARKING - LINE 6"	FOOT	175,000	175,000
78009008	MODIFIED URETHANE PAVEMENT MARKING - LINE 8"	FOOT	75,000	75,000
78009012	MODIFIED URETHANE PAVEMENT MARKING - LINE 12"	FOOT	50,000	50,000
78009018	MODIFIED URETHANE PAVEMENT MARKING - LINE 18"	FOOT	200	200
78009024	MODIFIED URETHANE PAVEMENT MARKING - LINE 24"	FOOT	15,000	15,000
78011040	GROOVING FOR RECESSED PAVEMENT MARKING 8"	FOOT	20,000	20,000
78300201	PAVEMENT MARKING REMOVAL - GRINDING	SQ FT	325,000	325,000
78300202	PAVEMENT MARKING REMOVAL - WATER BLASTING	SQ FT	200,000	200,000
X7800815	HOT SPRAY THERMOPLASTIC PAVEMENT MARKING LINE - 4 INCH	FOOT	300,000	300,000
X7800835	HOT SPRAY THERMOPLASTIC PAVEMENT MARKING LINE - 6 INCH	FOOT	20,000	20,000
X7800845	HOT SPRAY THERMOPLASTIC PAVEMENT MARKING LINE - 8 INCH	FOOT	10,000	10,000

MODEL: default
 FILE NAME: S:\S\Contracts\CAD\CoverSheets for Contracts.dgn

USER NAME = GONZALEZDIR
PLOT SCALE = 103.0154' / in.
PLOT DATE = 3/22/2022

DESIGNED -
DRAWN -
CHECKED -
DATE -

REVISED -
REVISED -
REVISED -
REVISED -

**STATE OF ILLINOIS
DEPARTMENT OF TRANSPORTATION**

SUMMARY OF QUANTITIES 2

SCALE: SHEET 4 OF 4 SHEETS STA. TO STA.

F.A. RTE.	SECTION	COUNTY	TOTAL SHEETS	SHEET NO.
D1 HT Pvmnt Mrk RPR 23-05	VARIOUS		4	4
CONTRACT NO. 46595				
ILLINOIS FED. AID PROJECT				