

06-17-2022 LETTING ITEM 184

STATE OF ILLINOIS
 DEPARTMENT OF TRANSPORTATION
 DIVISION OF HIGHWAYS
**PLANS FOR PROPOSED
 FEDERAL AID HIGHWAY**

SECTION	COUNTY	SP. NO.	SHEET NO.
22-00073-00-RS	WILL	24	1
STA. 5+16.07		TO STA. 58+87.83	
JOB NO. C91-192-22		G91-19(536)	

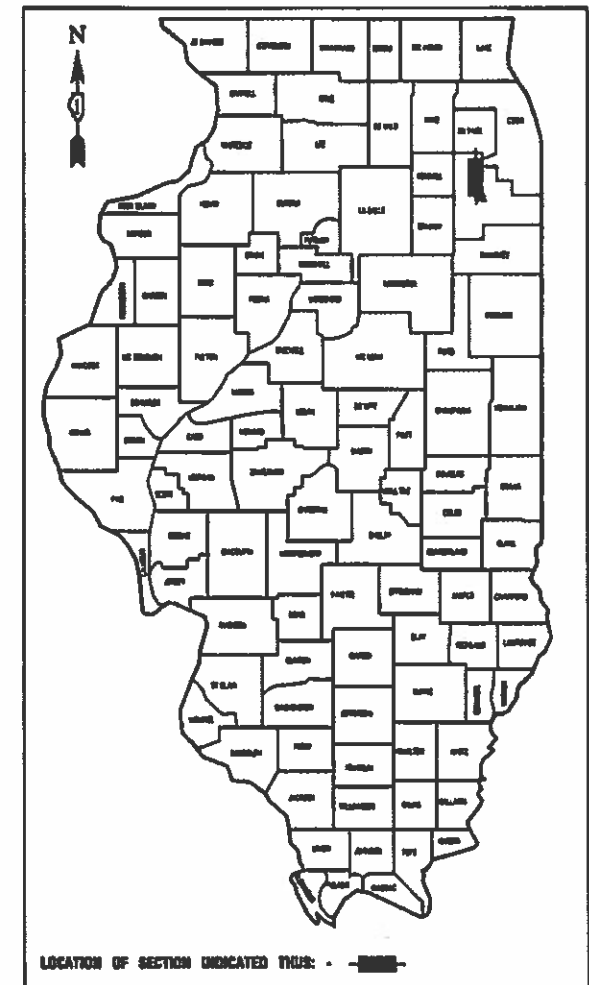
CONTRACT #61H76

INDEX OF SHEETS
SEE SHEET NO. 2

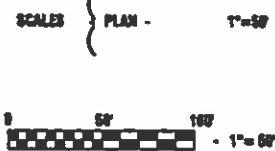
HIGHWAY STANDARDS
SEE SHEET NO. 2

**FAU ROUTE 5430 (BUDLER ROAD)
 AIRPORT ROAD TO TAYLOR ROAD
 ROADWAY RESURFACING
 SECTION NO.: 22-00073-00-RS
 PROJECT NO.: G9H9(536)
 VILLAGE of ROMEOVILLE
 WILL COUNTY
 JOB NO.: C91-192-22**

	<u>BUDLER ROAD</u>
2021 ADT -	4,500
POSTED SPEED LIMIT -	35 MPH
FUNCTIONAL CLASSIFICATION -	MAJOR COLLECTOR



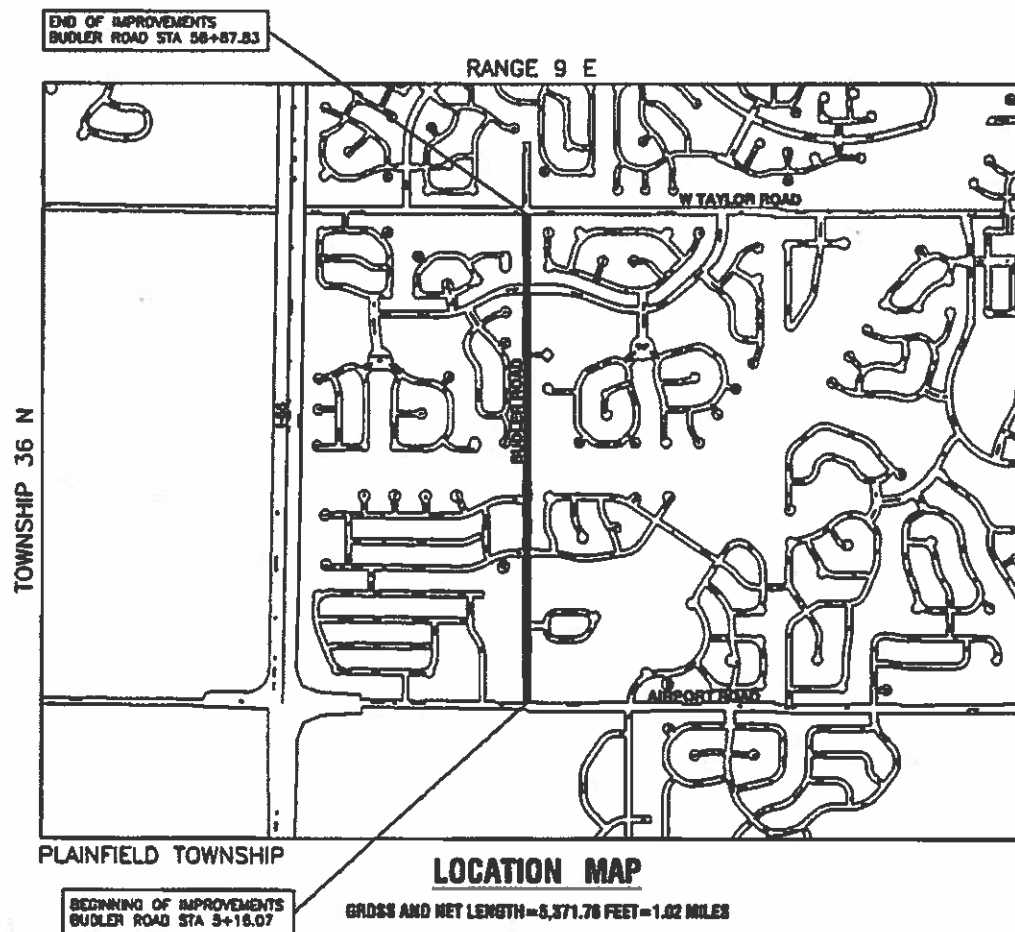
I.D.O.T. FEDERAL AID PROGRAM ENGINEER: CARMEN RAMOS, PE, SCHAUMBURG, IL
CONSULTANTS: ROBINSON ENGINEERING, LTD. 708-331-6700



FULL SIZE PLANS HAVE BEEN PREPARED USING STANDARD ENGINEERING SCALES, REDUCED SIZED PLANS WILL NOT CONFORM TO STANDARD SCALES, IN MAKING MEASUREMENTS ON REDUCED PLANS, THE ABOVE SCALES MAY BE USED.

J.U.L.I.E.
JOINT UTILITY LOCATION INFORMATION FOR EXCAVATION
1-800-892-8123 or 811

CONTRACT NO. 61H76



STATE OF ILLINOIS DEPARTMENT OF TRANSPORTATION

APPROVED 4/4/2022
John Thatt
 VILLAGE OF ROMEOVILLE, MAYOR

PASSED APRIL 18, 2022
C. R. Rode
 DISTRICT 1 ENGINEER OF LOCAL ROADS & STREETS

RELEASING FOR BID
 BASED ON LIMITED REVIEW APRIL 18, 2022
Jose Rios
 REGIONAL ENGINEER

PRINTED BY THE AUTHORITY OF
THE STATE OF ILLINOIS

PREPARED BY OR UNDER THE
DIRECT SUPERVISION OF

Nancy L. Gilmore
03-30-22



UPDATE EPDS: 1/28/20

INDEX OF SHEETS

- 1 COVER SHEET
- 2 INDEX OF SHEETS, HIGHWAY STANDARDS AND GENERAL NOTES
- 3 SUMMARY OF QUANTITIES
- 4 TYPICAL CROSS SECTIONS
- 5-6 ALIGNMENT AND TIES
- 7-9 PROPOSED IMPROVEMENT PLAN
- 10-12 PAVEMENT MARKING AND SIGNAGE PLAN
- 13-15 LANDSCAPING AND EROSION CONTROL PLAN
- 16 SOLAR-POWERED FLASHING BEACON DETAIL
- 17-24 IDOT DISTRICT 1 STANDARDS

HIGHWAY STANDARDS

- 000001-08 STANDARD SYMBOLS, ABBREVIATIONS AND PATTERNS
- 424001-11 PERPENDICULAR CURB RAMPS
- 424011-04 CORNER PARALLEL CURB RAMPS FOR SIDEWALKS
- 424021-06 DEPRESSED CORNER FOR SIDEWALKS
- 442201-03 CLASS C AND D PATCHES
- 604091-05 FRAME AND GRATE TYPE 24
- 606001-08 CONCRETE CURB TYPE B AND COMBINATION CONCRETE AND GUTTER
- 701001-02 OFF-RD OPERATIONS, 2L, 2W, MORE THAN 15'(4.5m) AWAY
- 701006-05 OFF-RD OPERATIONS, 2L, 2W, 15' TO 24" FROM PAVEMENT EDGE
- 701011-04 OFF-RD MOVING OPERATIONS, 2L, 2W, DAY ONLY
- 701301-04 LANE CLOSURE, 2L, 2W, SHORT TIME OPERATIONS
- 701311-03 LANE CLOSURE, 2L, 2W, MOVING OPERATIONS-DAY ONLY
- 701502-09 URBAN LANE CLOSURE, 2L, 2W, WITH BIDIRECTIONAL LEFT TURN LANE
- 701701-10 URBAN LANE CLOSURE, MULTILANE INTERSECTION
- 701801-06 SIDEWALK, CORNER OR CROSSWALK CLOSURE
- 701901-08 TRAFFIC CONTROL DEVICES
- 720001-01 SIGN PANEL MOUNTING DETAILS
- 720006-04 SIGN PANEL ERECTION DETAILS
- 720011-01 METAL POSTS FOR SIGNS, MARKERS AND DELINEATORS
- 729001-01 APPLICATIONS OF TYPES A&B METAL POSTS (FOR SIGNS AND MARKERS)
- 780001-05 TYPICAL PAVEMENT MARKINGS
- 886001-01 DETECTOR LOOP INSTALLATIONS

DISTRICT ONE DETAILS

- BD-08 DETAILS FOR FRAMES AND LIDS ADJUSTMENT WITH MILLING
- BD-22 PAVEMENT PATCHING FOR HMA SURFACED PAVEMENT
- BD-32 BUTT JOINT AND HMA TAPER DETAILS
- TC-10 TRAFFIC CONTROL AND PROTECTION FOR SIDE ROADS, INTERSECTIONS, AND DRIVEWAYS
- TC-13 DISTRICT ONE TYPICAL PAVEMENT MARKINGS
- TC-16 SHORT TERM PAVEMENT MARKINGS LETTERS AND SYMBOLS
- TC-22 ARTERIAL ROAD INFORMATION SIGN
- TS-07 DETECTOR LOOP INSTALLATION DETAILS FOR ROADWAY RESURFACING

GENERAL NOTES

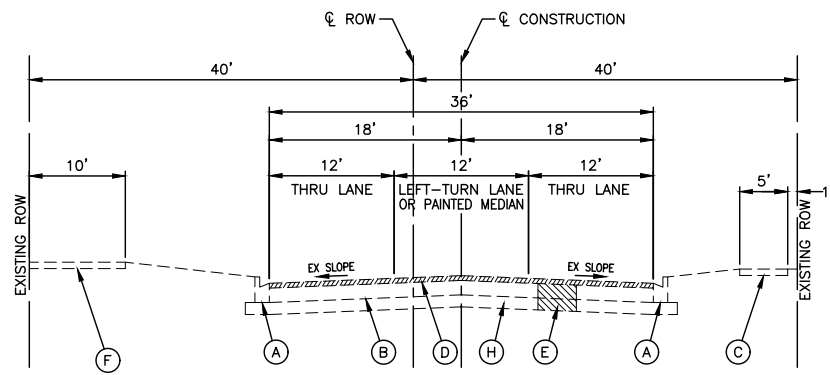
1. ITEMS OF WORK LISTED IN THE SUMMARY OF QUANTITIES NOT SPECIFICALLY CALLED OUT ON THE PLANS SHALL BE PERFORMED AS DIRECTED BY THE ENGINEER.
2. THE ROBINSON ENGINEERING, LTD. FIELD OFFICE (708-331-6700), AND THE PUBLIC WORKS DIRECTOR, AT THE VILLAGE OF ROMEVILLE, SHALL BE NOTIFIED TWO (2) WORKING DAYS BEFORE CONSTRUCTION BEGINS.
3. BEFORE STARTING ANY EXCAVATION THE CONTRACTOR SHALL CALL "J.U.L.I.E." AT (800) 892-0123 OR 811 AND (312) 744-7000 FOR FIELD LOCATIONS OF BURIED ELECTRIC, TELEPHONE AND GAS UTILITIES. (48 HOUR NOTIFICATION REQUIRED)
4. UTILITIES INDICATED ON THE PLANS ARE PROVIDED FOR THE CONTRACTOR'S USE AND ARE BASED UPON INFORMATION AVAILABLE AT THE TIME OF THE ADVERTISEMENT FOR BIDS. THE OWNER AND ENGINEER DO NOT GUARANTEE THE ACCURACY OF UTILITY INFORMATION.
5. IT SHALL BE THE CONTRACTOR'S RESPONSIBILITY TO VERIFY ALL DIMENSIONS AND CONDITIONS EXISTING IN THE FIELD PRIOR TO CONSTRUCTION AND ORDERING OF MATERIALS.
6. THE THICKNESS OF HMA MIXTURE STATED IN THE SPECIFICATIONS IS THE NOMINAL THICKNESS. DEVIATIONS FROM THE NOMINAL THICKNESS WILL BE PERMITTED WHEN SUCH DEVIATIONS OCCUR DUE TO IRREGULARITIES IN THE EXISTING SURFACE OR BASE ON WHICH THE HMA SURFACE IS PLACED.
7. ANY LOOSE MATERIAL DEPOSITED IN THE FLOW LINE OF DITCHES, GUTTERS OR OTHER DRAINAGE STRUCTURES SHALL BE REMOVED BY THE END OF EACH DAY BY THE CONTRACTOR.
8. CLASS D PATCHING QUANTITIES FOR THIS CONTRACT SHALL BE PERFORMED AT THE DIRECTION OF THE ENGINEER AFTER PAVEMENT MILLING. PATCHES WITHIN THE ROADWAY SHALL BE PERFORMED AFTER MILLING.
9. CONTRACTOR SHALL TAKE PRECAUTION BY PRESERVING EXISTING TREES WITHIN THE RIGHT OF WAY. IF ANY DAMAGE OCCURS, TREES SHALL BE REPLACED IN KIND PER ARTICLE 201.07 REPAIR OR REPLACEMENT OF EXISTING PLANT MATERIAL REQUIREMENTS STATED HEREIN.
10. NO PAVEMENT PATCHING SHALL BE PERMITTED AFTER FRIDAY AT 3:00 PM OF EACH AND EVERY WEEK AND NO HOLES WILL BE ALLOWED TO REMAIN OPEN OVERNIGHT OR OVER THE WEEKEND.
11. ALL EQUIPMENT SHALL BE REMOVED OFF THE VILLAGE STREETS DURING ALL HOLIDAY WEEKENDS AS COORDINATED WITH THE VILLAGE.
12. HMA PAVING SHALL BE PERFORMED WITH HOT JOINTS.

FILE NAME = 16R0300-INDX-01 - P01	USER NAME =	DESIGNED -- MPN	REVISED --	STATE OF ILLINOIS DEPARTMENT OF TRANSPORTATION	BUDLER ROAD ROADWAY RESURFACING INDEX OF SHEETS, STANDARDS & GENERAL NOTES			F.A.U. RTE.	SECTION	COUNTY	TOTAL SHEETS	SHEET NO.
		CHECKED -- WPD	REVISED --		5430	22-00073-00-RS	WILL	24	2			
PLOT SCALE =	DRAWN -- MD	REVISED --	CONTRACT NO. 61H76									
PLOT DATE = 03-30-22	CHECKED -- AG	REVISED --	SCALE: NONE		SHEET NO. 2	OF 24 SHEETS	STA.	TO STA.	FED. ROAD DIST. NO. 1	ILLINOIS	FED. AID PROJECT	G9H9(536)

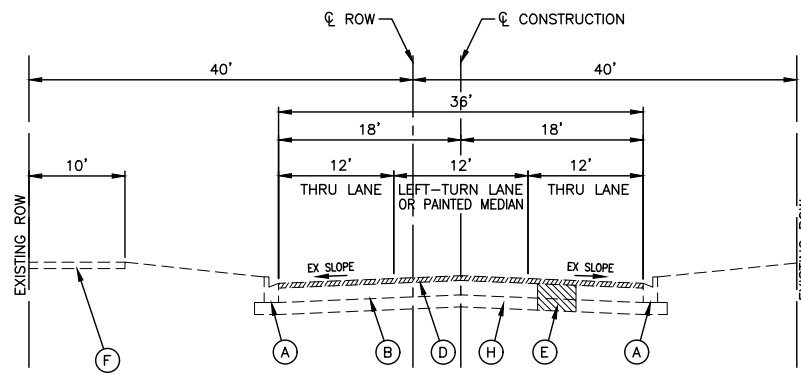
SUMMARY OF QUANTITIES					FED 80% VILLAGE 20%	FED 80% VILLAGE 20%
					ROADWAY	SAFETY
S.P.	S.I.	CODE NO.	ITEM	UNIT	TOTAL QUANTITY	CONSTRUCTION TYPE CODE 0005 0021
		28000510	INLET FILTERS	EACH	58	58
		31101200	SUBBASE GRANULAR MATERIAL, TYPE B 4"	SQ YD	200	200
		35800100	PREPARATION OF BASE	SQ YD	263	263
		35800200	AGGREGATE BASE REPAIR	TON	85	85
△		40201000	AGGREGATE FOR TEMPORARY ACCESS	TON	20	20
		40600290	BITUMINOUS MATERIALS (TACK COAT)	POUND	15,720	15,720
		40600370	LONGITUDINAL JOINT SEALANT	FOOT	10,744	10,744
		40600400	MIXTURE FOR CRACKS, JOINTS, AND FLANGEWAYS	TON	20	20
		40600982	HOT-MIX ASPHALT SURFACE REMOVAL - BUTT JOINT	SQ YD	246	246
		40603200	POLYMERIZED HOT-MIX ASPHALT BINDER COURSE, IL-4.75, N50	TON	980	980
		40604060	HOT-MIX ASPHALT SURFACE COURSE, IL-9.5, MIX "D", N50	TON	1,960	1,960
		42400200	PORTLAND CEMENT CONCRETE SIDEWALK 5 INCH	SQ FT	1,788	1,788
△		42400800	DETECTABLE WARNINGS	SQ FT	360	360
		44000157	HOT-MIX ASPHALT SURFACE REMOVAL, 2"	SQ YD	23,300	23,300
		44000500	COMBINATION CURB AND GUTTER REMOVAL	FOOT	1,560	1,560
		44201670	CLASS D PATCHES, TYPE I, 2 INCH	SQ YD	4	4
		44201672	CLASS D PATCHES, TYPE II, 2 INCH	SQ YD	77	77
		44201674	CLASS D PATCHES, TYPE III, 2 INCH	SQ YD	15	15
		44201676	CLASS D PATCHES, TYPE IV, 2 INCH	SQ YD	25	25
		44201761	CLASS D PATCHES, TYPE I, 10 INCH	SQ YD	4	4
		44201765	CLASS D PATCHES, TYPE II, 10 INCH	SQ YD	5	5
		44201769	CLASS D PATCHES, TYPE III, 10 INCH	SQ YD	15	15
		44201771	CLASS D PATCHES, TYPE IV, 10 INCH	SQ YD	118	118

SUMMARY OF QUANTITIES					FED 80% VILLAGE 20%	FED 80% VILLAGE 20%
					ROADWAY	SAFETY
S.P.	S.I.	CODE NO.	ITEM	UNIT	TOTAL QUANTITY	CONSTRUCTION TYPE CODE 0005 0021
△		60404950	FRAMES AND GRATES, TYPE 24	EACH	2	2
		67100100	MOBILIZATION	LSUM	1	1
		70102622	TRAFFIC CONTROL AND PROTECTION, STANDARD 701502	LSUM	1	1
		70102635	TRAFFIC CONTROL AND PROTECTION, STANDARD 701701	LSUM	1	1
		70102640	TRAFFIC CONTROL AND PROTECTION, STANDARD 701801	LSUM	1	1
		70300100	SHORT TERM PAVEMENT MARKING	FOOT	6,538	6,538
		70300150	SHORT TERM PAVEMENT MARKING REMOVAL	SQ FT	2,182	2,182
	*	72000100	SIGN PANEL - TYPE 1	SQ FT	22	22
	*	72900200	METAL POST - TYPE B	FOOT	40	40
	*	78000100	THERMOPLASTIC PAVEMENT MARKING - LETTERS AND SYMBOLS	SQ FT	438	438
	*	78000200	THERMOPLASTIC PAVEMENT MARKING - LINE 4"	FOOT	14,660	14,660
	*	78000400	THERMOPLASTIC PAVEMENT MARKING - LINE 6"	FOOT	3,640	3,640
	*	78000600	THERMOPLASTIC PAVEMENT MARKING - LINE 12"	FOOT	613	613
	*	78000650	THERMOPLASTIC PAVEMENT MARKING - LINE 24"	FOOT	278	278
△	*	88600600	DETECTOR LOOP REPLACEMENT	FOOT	246	246
△		Z0017400	DRAINAGE & UTILITY STRUCTURES TO BE ADJUSTED	EACH	72	72
△		Z0017700	DRAINAGE & UTILITY STRUCTURES TO BE RECONSTRUCTED	EACH	1	1
		Z0030850	TEMPORARY INFORMATION SIGNING	SQ FT	52	52
△	*	X0326899	SOLAR-POWERED FLASHING BEACON ASSEMBLY (COMPLETE)	EACH	2	2
△		X4404700	SIDEWALK REMOVAL (SPECIAL)	SQ FT	1,788	1,788
△		X6064200	COMBINATION CONCRETE CURB AND GUTTER, TYPE B-6.12 (SPECIAL)	FOOT	1,560	1,560
△		XX006343	SEEDING (COMPLETE)	SQ YD	458	458

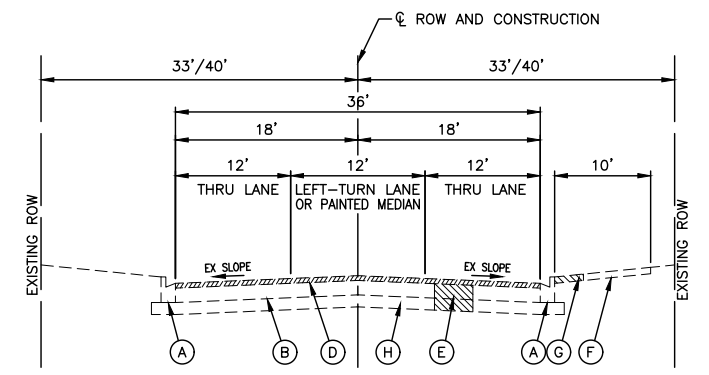
* - INDICATES SPECIALTY ITEMS
△ - INDICATES SPECIAL PROVISIONS



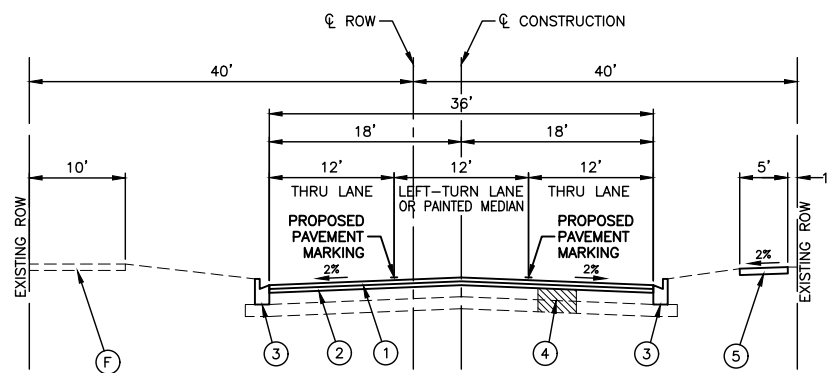
EXISTING TYPICAL SECTION
 BUDLER ROAD
 STA 5+16.07 TO STA 13+50
 N.T.S.



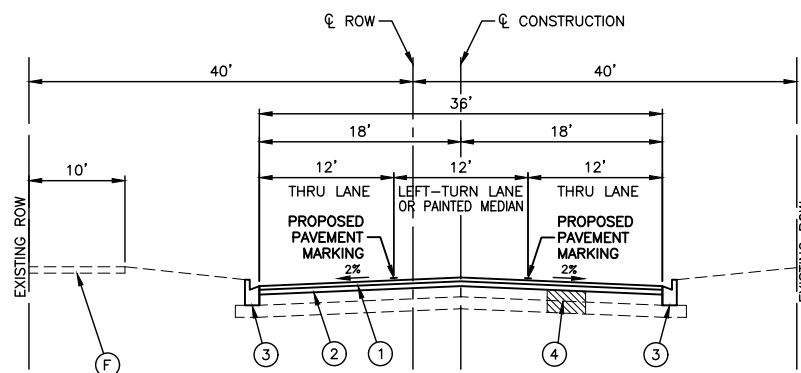
EXISTING TYPICAL SECTION
 BUDLER ROAD
 STA 13+50 TO STA 26+68.30
 N.T.S.



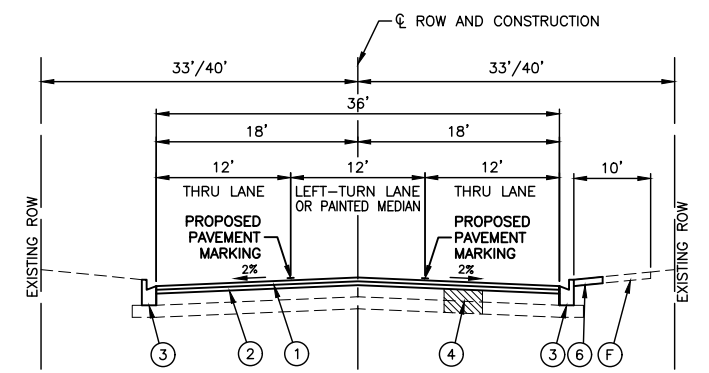
EXISTING TYPICAL SECTION
 BUDLER ROAD
 STA 26+68.30 TO STA 58+87.83
 N.T.S.



PROPOSED TYPICAL SECTION
 BUDLER ROAD
 STA 5+16.07 TO STA 13+50
 N.T.S.



PROPOSED TYPICAL SECTION
 BUDLER ROAD
 STA 13+50 TO STA 26+68.30
 N.T.S.



PROPOSED TYPICAL SECTION
 BUDLER ROAD
 STA 26+68.30 TO STA 58+87.83
 N.T.S.

EXISTING LEGEND

- (A) EXISTING CURB AND GUTTER TO BE REMOVED AT LOCATIONS AS SHOWN ON PLANS OR DIRECTED BY THE ENGINEER.
- (B) EXISTING HOT-MIX ASPHALT PAVEMENT, 10"-15"
- (C) EXISTING PORTLAND CEMENT CONCRETE SIDEWALK TO BE REMOVED AT LOCATIONS AS SHOWN ON PLANS OR DIRECTED BY THE ENGINEER.
- (D) HOT-MIX ASPHALT SURFACE REMOVAL, 2"
- (E) PAVEMENT REMOVAL FOR CLASS D PATCHES, 10 INCH
- (F) EXISTING MULTI-USE PATH
- (G) PAVEMENT REMOVAL FOR CLASS D PATCHES, 2 INCH
- (H) AGGREGATE SUBGRADE, 5"-6"

PROPOSED LEGEND

- (1) HOT MIX ASPHALT SURFACE COURSE, MIX "D", N50, IL-9.5, 1-1/2"
- (2) POLYMERIZED HOT-MIX ASPHALT BINDER COURSE, IL-4.75, N50, 3/4"
- (3) COMBINATION CONCRETE CURB AND GUTTER, AT LOCATIONS AS SHOWN ON PLANS OR DIRECTED BY THE ENGINEER
- (4) CLASS D PATCHES, 10 INCH PREPARATION OF BASE, AGGREGATE BASE REPAIR, AT LOCATIONS WITHIN THE ROADWAY AS SHOWN ON THE PLANS OR AS DIRECTED BY THE ENGINEER
- (5) PORTLAND CEMENT CONCRETE SIDEWALK, 5" AT LOCATIONS AS SHOWN ON PLANS OR DIRECTED BY THE ENGINEER
- (6) CLASS D PATCHES, 2 INCH PREPARATION OF BASE, AGGREGATE BASE REPAIR AT LOCATIONS ON THE HOT-MIX ASPHALT MULTI-USE PATH AS SHOWN ON PLANS OR AS DIRECTED BY THE ENGINEER

HOT-MIX ASPHALT MIXTURE REQUIREMENTS

MIXTURE TYPE	AIR VOIDS @ NDES	QMP
RESURFACING		
HOT-MIX ASPHALT SURFACE COURSE, MIX "D", N50, IL-9.5, 1-1/2"	4% @ 50 Gyr.	LR 1030-2
POLYMERIZED HOT-MIX ASPHALT BINDER COURSE, IL-4.75, N50, 3/4"	3.5% @ 50 Gyr.	LR 1030-2
PATCHING		
(MULTI-USE PATH) CLASS D PATCHES, 2 INCH (HOT-MIX ASPHALT SURFACE COURSE, MIX "D", N50, IL-9.5)	4% @ 50 Gyr.	LR 1030-2
(ROADWAY) CLASS D PATCHES, 10 INCH (HOT-MIX ASPHALT BINDER COURSE, IL 19mm, N70)	4% @ 70 Gyr.	LR 1030-2
DRAINAGE AND UTILITY STRUCTURES TO BE ADJUSTED		
HOT-MIX ASPHALT BINDER COURSE (HAND METHOD), N50 (IL-9.5mm)	4% @ 50 Gyr.	LR 1030-2

- NOTES:
- THE UNIT WEIGHT USED TO CALCULATE ALL HOT-MIX ASPHALT SURFACE MIXTURE QUANTITIES IS 112 LBS/SY/IN.
 - THE "AC TYPE" FOR POLYMERIZED HMA MIXES SHALL BE "SBS/SBR PG 76-22" AND FOR NON-POLYMERIZED HMA THE "AC" TYPE" SHALL BE "PG 64-22" UNLESS MODIFIED BY RECLAIMED MATERIAL SPECIFICATIONS.

NOTES:

THE LONGITUDINAL JOINT SEALANT SHALL BE PLACED OVER THE POLYMERIZED HOT-MIX ASPHALT BINDER COURSE, IL-4.75, N50

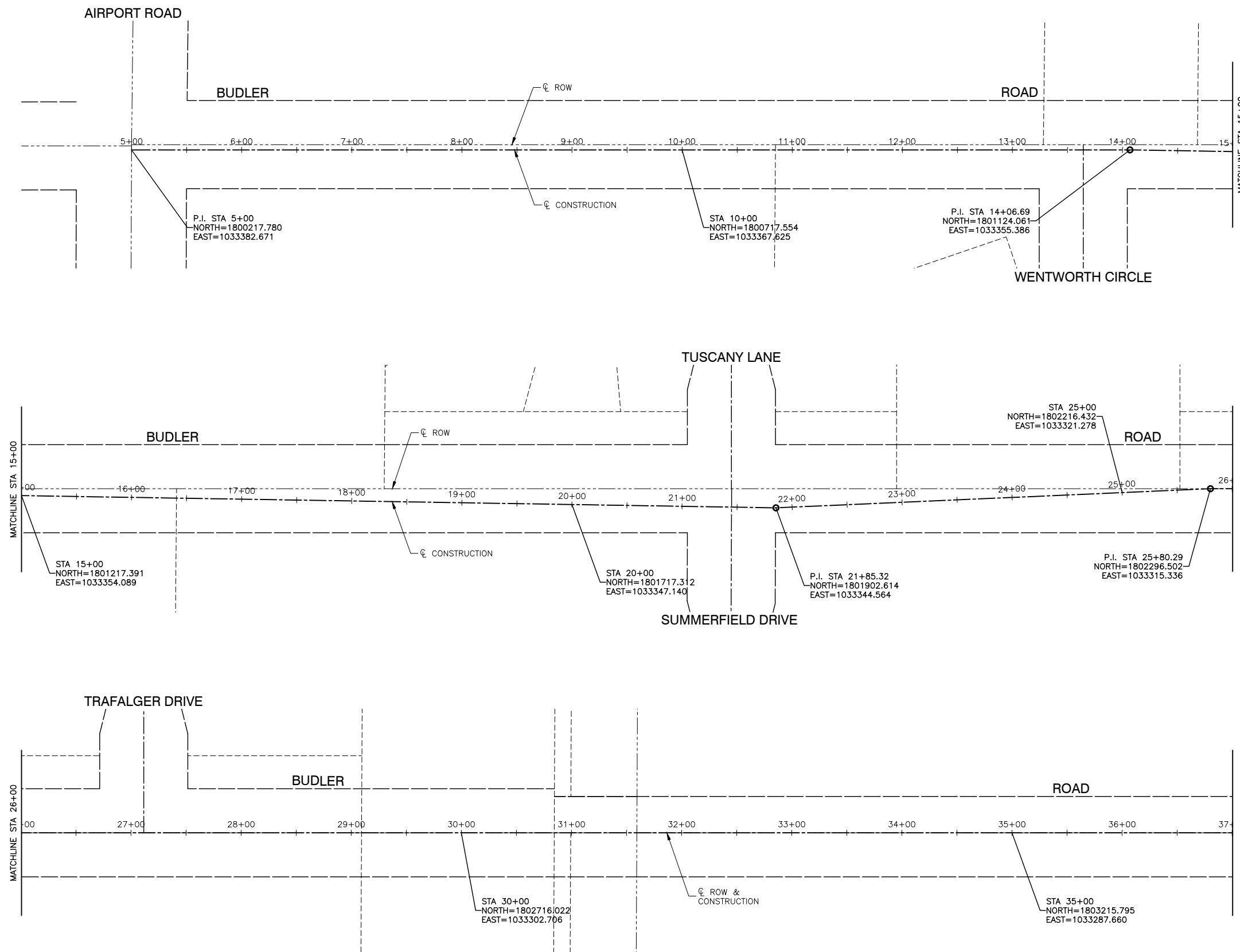
FILE NAME = 16R0300-TYPX-01 - TYPX(22X34)

USER NAME =	DESIGNED -- MPN	REVISED --
	CHECKED -- WPD	REVISED --
PLOT SCALE =	DRAWN -- MD	REVISED --
PLOT DATE = 03-30-22	CHECKED -- AG	REVISED --

STATE OF ILLINOIS
 DEPARTMENT OF TRANSPORTATION

BUDLER ROAD ROADWAY RESURFACING TYPICAL CROSS SECTIONS	
SCALE:	SHEET NO. 4 OF 24 SHEETS STA. TO STA.

F.A.U. RTE.	SECTION	COUNTY	TOTAL SHEETS	SHEET NO.
5430	22-00073-00-RS	WILL	24	4
CONTRACT NO. 61H76				
FED. ROAD DIST. NO. 1 ILLINOIS FED. AID PROJECT G9H9(536)				



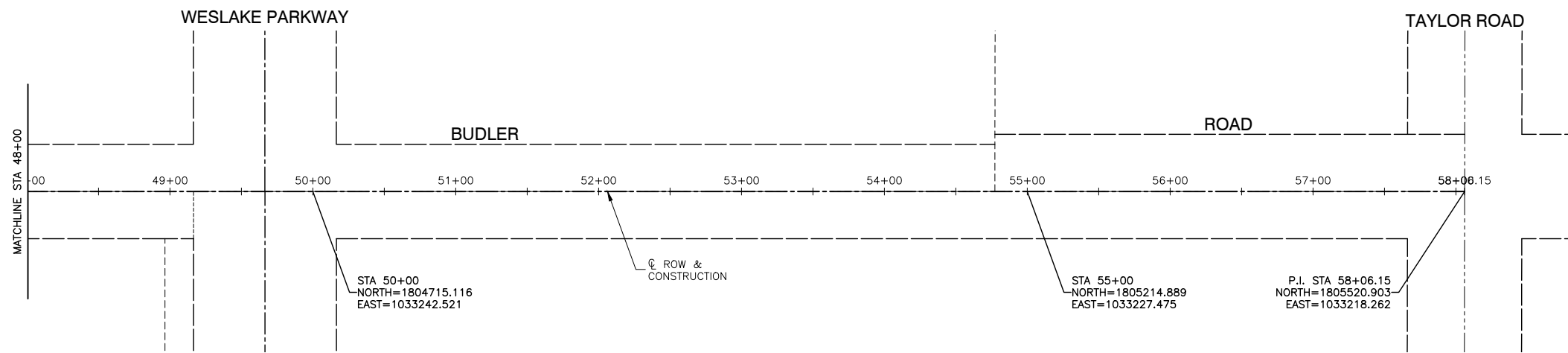
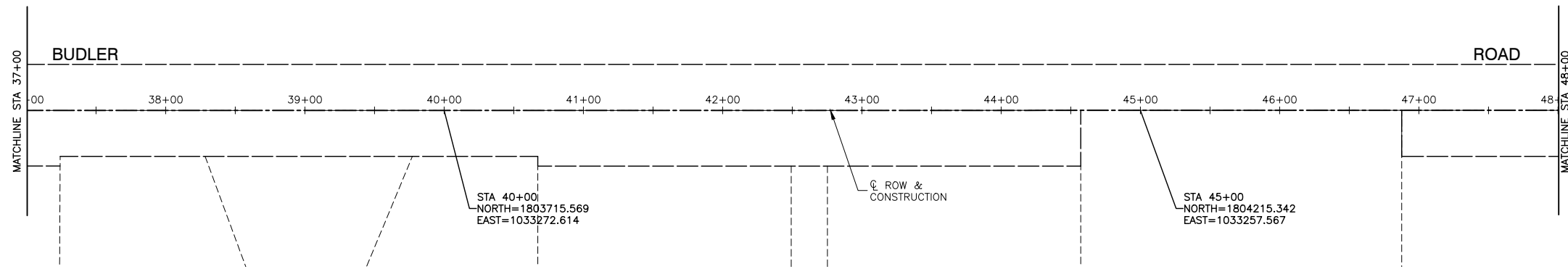
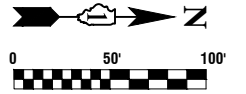
FILE NAME = 16R0300-TIES-01 - P01

USER NAME =	DESIGNED -- MPN	REVISED --
	CHECKED -- WPD	REVISED --
PLOT SCALE =	DRAWN -- RG	REVISED --
PLOT DATE = 03-30-22	CHECKED -- AG	REVISED --

STATE OF ILLINOIS
DEPARTMENT OF TRANSPORTATION

BUDLER ROAD ROADWAY RESURFACING ALIGNMENT AND TIES		
SCALE: 1"=50'	SHEET NO. 5 OF 24 SHEETS	STA. TO STA.

F.A.U. RTE.	SECTION	COUNTY	TOTAL SHEETS	SHEET NO.
5430	22-00073-00-RS	WILL	24	5
CONTRACT NO. 61H76				
FED. ROAD DIST. NO. 1 ILLINOIS FED. AID PROJECT G9H9(536)				



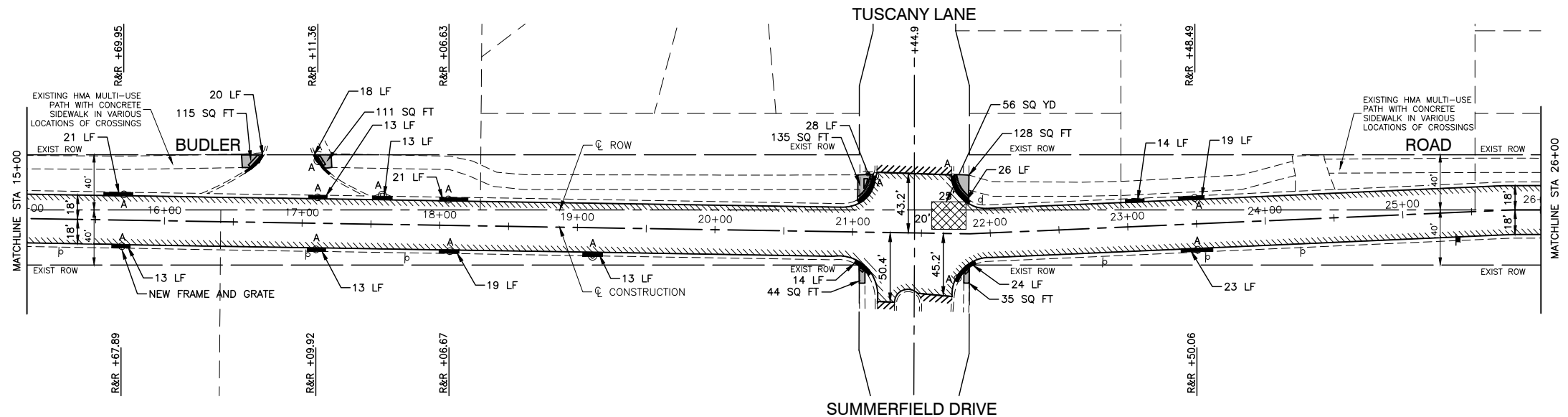
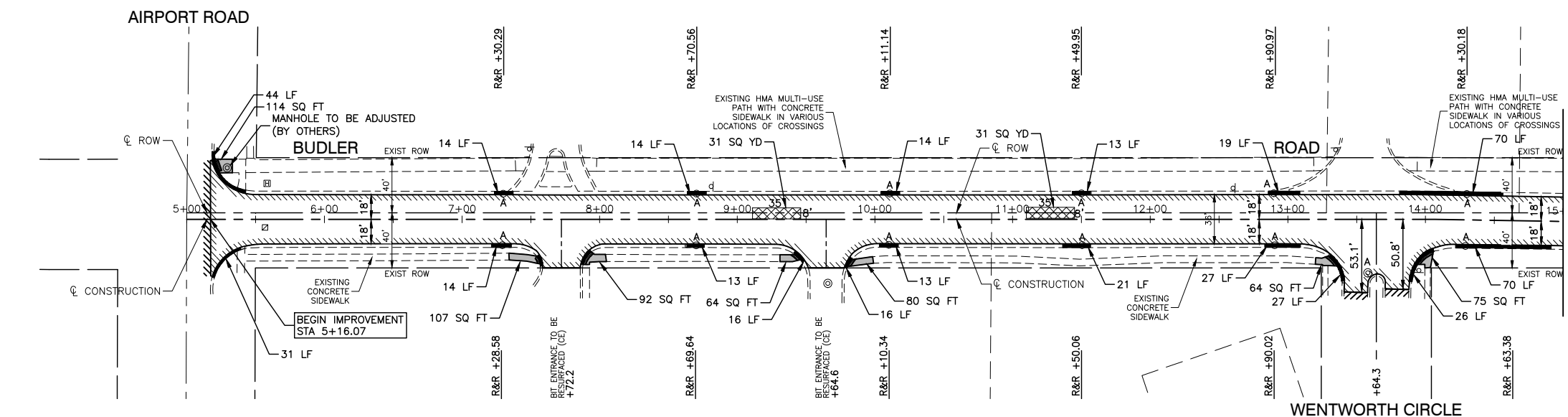
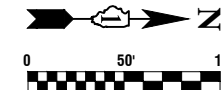
FILE NAME = 16R0300-TIES-01 - P02

USER NAME =	DESIGNED -- MPN	REVISED --
	CHECKED -- WPD	REVISED --
PLOT SCALE =	DRAWN -- RG	REVISED --
PLOT DATE = 03-30-22	CHECKED -- AG	REVISED --

STATE OF ILLINOIS
DEPARTMENT OF TRANSPORTATION

BUDLER ROAD ROADWAY RESURFACING ALIGNMENT AND TIES	
SCALE: 1"=50'	SHEET NO. 6 OF 24 SHEETS STA. TO STA.

F.A.U. RTE.	SECTION	COUNTY	TOTAL SHEETS	SHEET NO.
5430	22-00073-00-RS	WILL	24	6
CONTRACT NO. 61H76				
FED. ROAD DIST. NO. 1 ILLINOIS FED. AID PROJECT G9H9(536)				



- LEGEND**
- CLASS D PATCHES, 2 INCH (MULTI-USE PATH)
 - CLASS D PATCHES, 10 INCH (ROADWAY)
 - HMA SURFACE REMOVAL, 2" - REPLACE WITH POLYMERIZED HOT-MIX ASPHALT BINDER COURSE, IL-4.75, N50, 3/4" HOT-MIX ASPHALT SURFACE COURSE, MIX "D", N50, IL-9.5, 1-1/2"
 - SIDEWALK REMOVAL (SPECIAL) PORTLAND CEMENT CONCRETE SIDEWALK, 5 INCH SUBBASE GRANULAR MATERIAL, TYPE B, 4"
 - DETECTABLE WARNINGS
 - BUTT JOINTS
 - COMBINATION CONCRETE CURB AND GUTTER REMOVAL COMBINATION CONCRETE CURB AND GUTTER, TYPE B-6.12 (SPECIAL)
 - "A" DRAINAGE & UTILITY STRUCTURES TO BE ADJUSTED
 - C&G OF CURB AND GUTTER REMOVAL AND REPLACEMENT
 - SOUTH LIMIT OF MULTI-USE PATH PATCH

NOTE:
ALL SIDEWALK RAMPS WILL BE IN ACCORDANCE WITH THE HIGHWAY STANDARDS REFERENCED ON SHEET 2.

FILE NAME = 16R0300-PLAN-01 - REL_22X34

USER NAME =	DESIGNED -- MPN	REVISED --
	CHECKED -- WPD	REVISED --
PLOT SCALE =	DRAWN -- MD/RG	REVISED --
PLOT DATE = 03-30-22	CHECKED -- AG	REVISED --

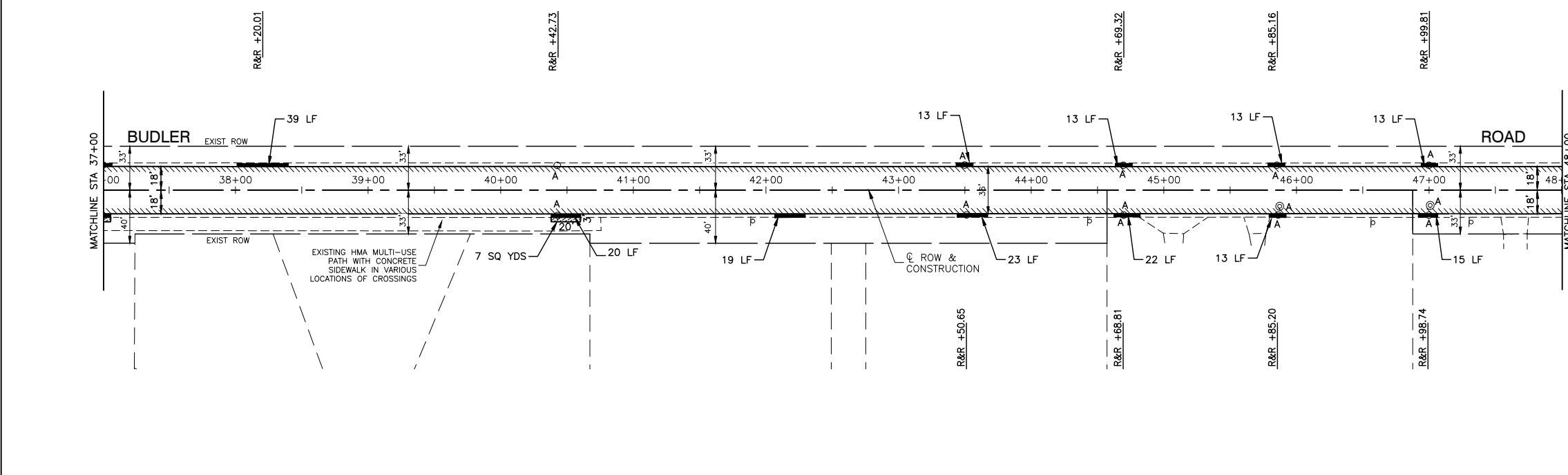
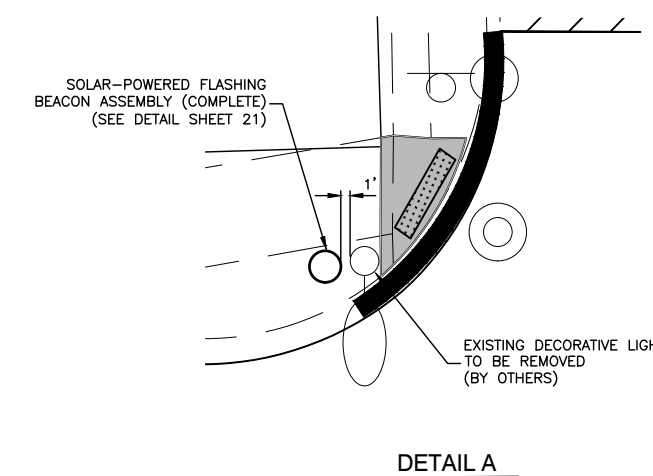
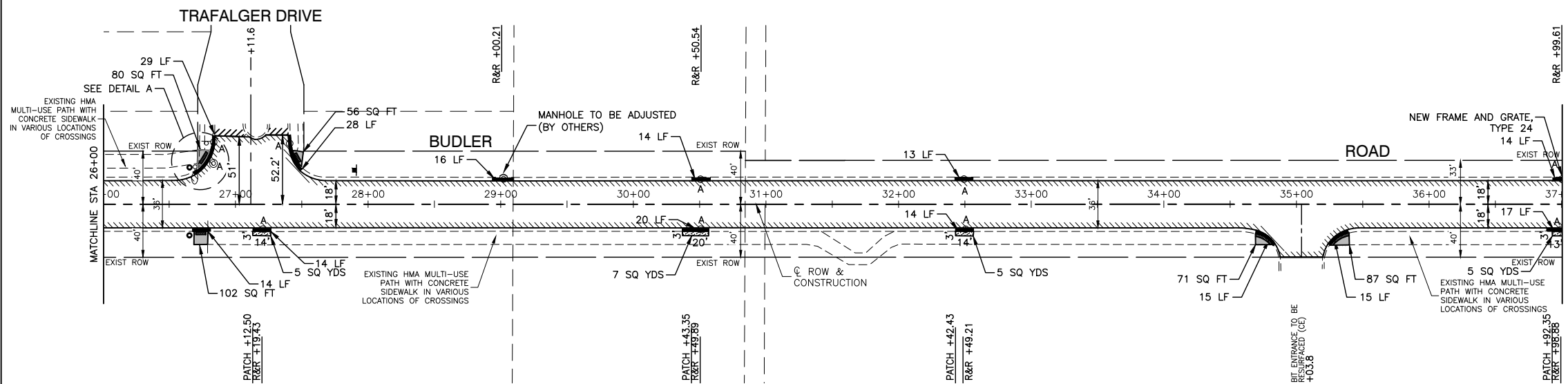
STATE OF ILLINOIS
DEPARTMENT OF TRANSPORTATION

BUDLER ROAD
ROADWAY RESURFACING
PROPOSED IMPROVEMENT PLAN

SCALE: 1"=50'

SHEET NO. 7 OF 24 SHEETS STA. TO STA.

F.A.U. RTE.	SECTION	COUNTY	TOTAL SHEETS	SHEET NO.
5430	22-00073-00-RS	WILL	24	7
CONTRACT NO. 61H76				
FED. ROAD DIST. NO. 1 ILLINOIS FED. AID PROJECT G9H9(536)				



- LEGEND**
- CLASS D PATCHES, 2 INCH (MULTI-USE PATH)
 - CLASS D PATCHES, 10 INCH (ROADWAY)
 - HMA SURFACE REMOVAL, 2" - REPLACE WITH POLYMERIZED HOT-MIX ASPHALT BINDER COURSE, IL-4.75, N50, 3/4" HOT-MIX ASPHALT SURFACE COURSE, MIX "D", N50, IL-9.5, 1-1/2"
 - SIDEWALK REMOVAL (SPECIAL) PORTLAND CEMENT CONCRETE SIDEWALK, 5 INCH SUBBASE GRANULAR MATERIAL, TYPE B, 4"
 - DETECTABLE WARNINGS
 - BUTT JOINTS
 - COMBINATION CONCRETE CURB AND GUTTER REMOVAL COMBINATION CONCRETE CURB AND GUTTER, TYPE B-6.12 (SPECIAL)
 - DRAINAGE & UTILITY STRUCTURES TO BE ADJUSTED
 - C OF CURB AND GUTTER REMOVAL AND REPLACEMENT
 - SOUTH LIMIT OF MULTI-USE PATH PATCH

NOTE:
ALL SIDEWALK RAMPS WILL BE IN ACCORDANCE WITH THE HIGHWAY STANDARDS REFERENCED ON SHEET 2.

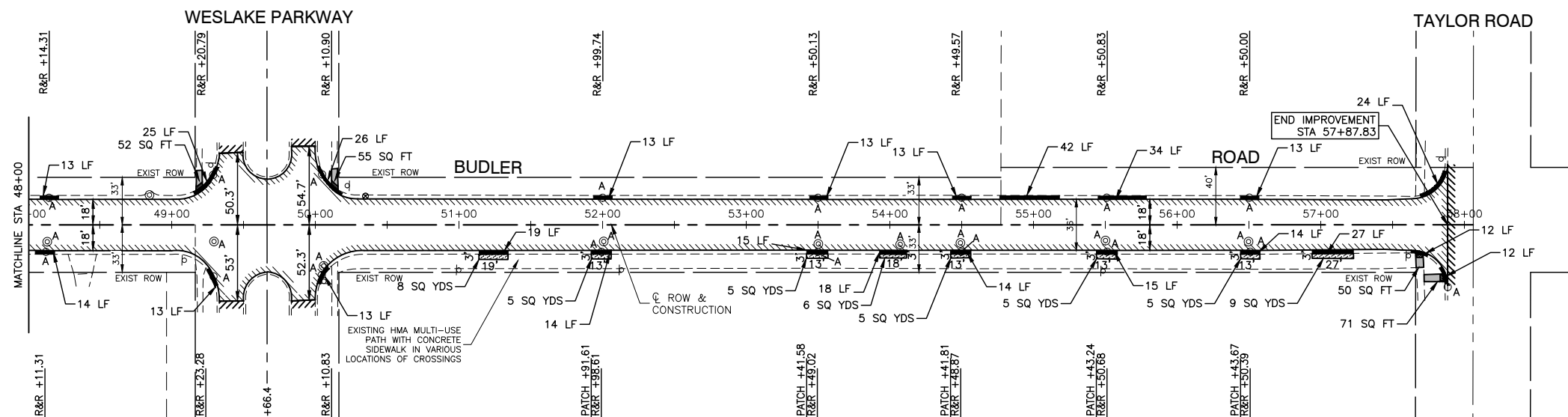
FILE NAME = 16R0300-PLAN-01 - REL_22X34 (2)
PLOT SCALE =
PLOT DATE = 03-30-22

USER NAME =	DESIGNED -- MPN	REVISED --
	CHECKED -- WPD	REVISED --
	DRAWN -- MD/RG	REVISED --
	CHECKED -- AG	REVISED --

STATE OF ILLINOIS
DEPARTMENT OF TRANSPORTATION

BUDLER ROAD
ROADWAY RESURFACING
PROPOSED IMPROVEMENT PLAN
SCALE: 1"=50'
SHEET NO. 8 OF 24 SHEETS
STA. TO STA.

F.A.U. RTE.	SECTION	COUNTY	TOTAL SHEETS	SHEET NO.
5430	22-00073-00-RS	WILL	24	8
CONTRACT NO. 61H76				
FED. ROAD DIST. NO. 1 ILLINOIS FED. AID PROJECT G9H9(536)				



LEGEND

- CLASS D PATCHES, 2 INCH (MULTI-USE PATH)
- CLASS D PATCHES, 10 INCH (ROADWAY)
- HMA SURFACE REMOVAL, 2" - REPLACE WITH POLYMERIZED HOT-MIX ASPHALT BINDER COURSE, IL-4.75, N50, 3/4" HOT-MIX ASPHALT SURFACE COURSE, MIX "D", N50, IL-9.5, 1-1/2"
- SIDEWALK REMOVAL (SPECIAL)
PORTLAND CEMENT CONCRETE SIDEWALK, 5 INCH
SUBBASE GRANULAR MATERIAL, TYPE B, 4"
- DETECTABLE WARNINGS
- BUTT JOINTS
- COMBINATION CONCRETE CURB AND GUTTER REMOVAL
COMBINATION CONCRETE CURB AND GUTTER, TYPE B-6.12 (SPECIAL)
- "A"
DRAINAGE & UTILITY STRUCTURES
TO BE ADJUSTED
- R&R
C OF CURB AND GUTTER
REMOVAL AND REPLACEMENT
- PATCH
SOUTH LIMIT OF
MULTI-USE PATH PATCH

NOTE:

ALL SIDEWALK RAMPS WILL BE IN ACCORDANCE WITH THE HIGHWAY STANDARDS REFERENCED ON SHEET 2.

FILE NAME = 16R0300-PLAN-01 - REL_22X34 (3)

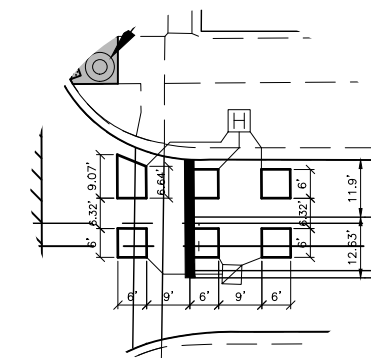
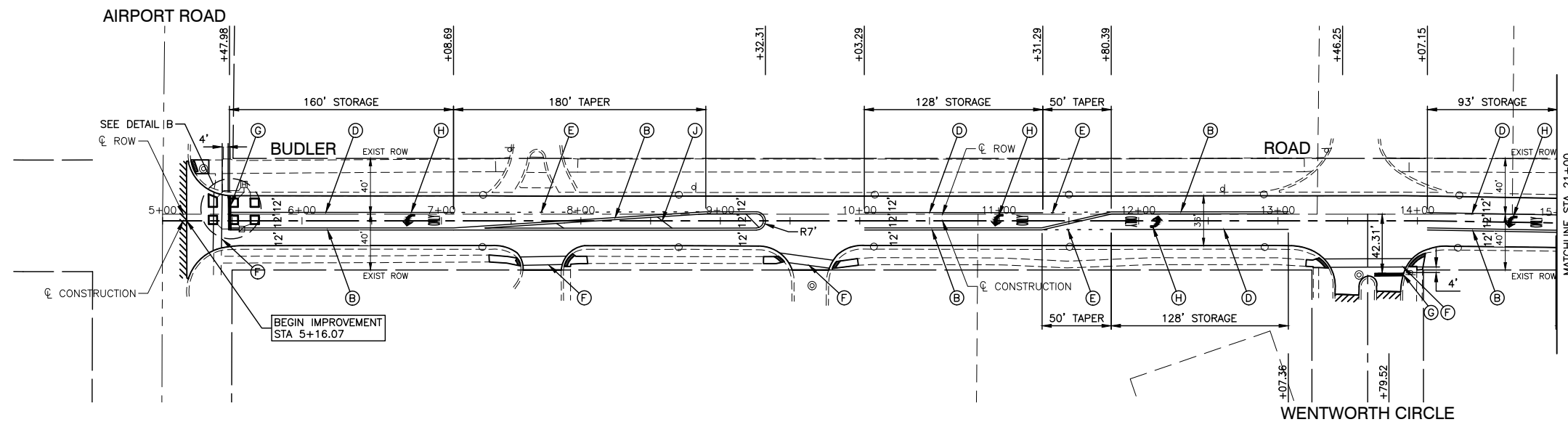
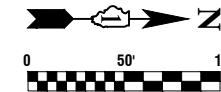
USER NAME =	DESIGNED -- MPN	REVISED --
	CHECKED -- WPD	REVISED --
PLOT SCALE =	DRAWN -- MD/RG	REVISED --
PLOT DATE = 03-30-22	CHECKED -- AG	REVISED --

**STATE OF ILLINOIS
DEPARTMENT OF TRANSPORTATION**

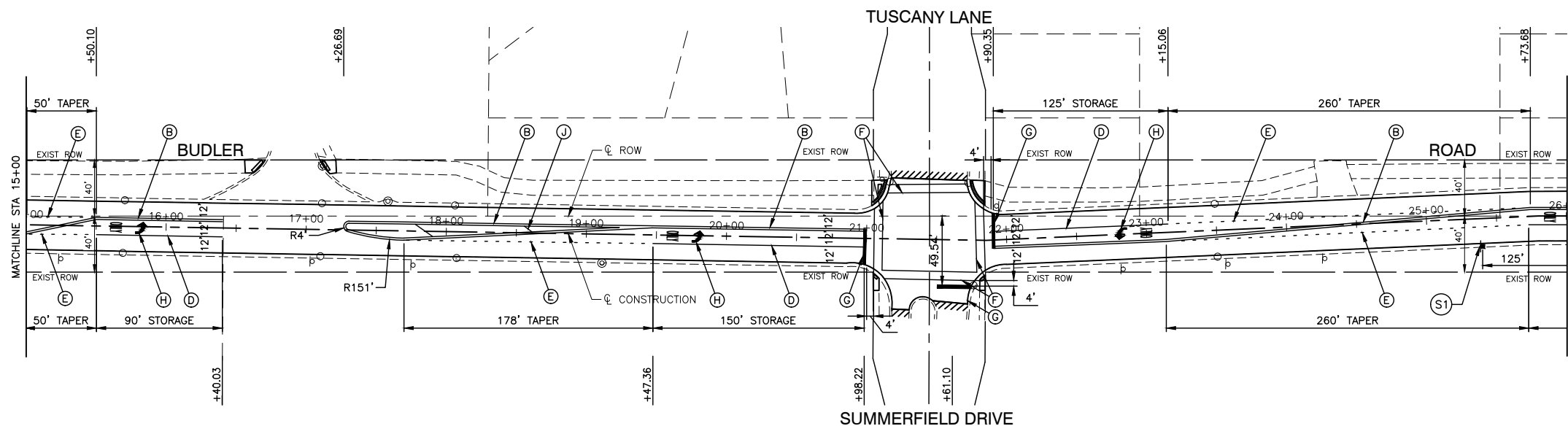
**BUDLER ROAD
ROADWAY RESURFACING
PROPOSED IMPROVEMENT PLAN**

F.A.U. RTE.	SECTION	COUNTY	TOTAL SHEETS	SHEET NO.
5430	22-00073-00-RS	WILL	24	9
CONTRACT NO. 61H76				
FED. ROAD DIST. NO. 1 ILLINOIS FED. AID PROJECT G9H9(536)				

SCALE: 1"=50' SHEET NO. 9 OF 24 SHEETS STA. TO STA.



DETAIL B
DETECTOR LOOP REPLACEMENT DETAIL
SCALE 1"=20'



PAVEMENT MARKING LEGEND

- (B) THERMOPLASTIC PAVEMENT MARKING - YELLOW LINE, 4" DOUBLE LINE (11" C/C)
 - (D) THERMOPLASTIC PAVEMENT MARKING - WHITE LINE, 6" LINE
 - (E) THERMOPLASTIC PAVEMENT MARKING - WHITE LINE, 6" SKIP DASH (2' LINE-6' SPACE)
 - (F) THERMOPLASTIC PAVEMENT MARKING - WHITE LINE, 6" CROSSWALK (6' C-C)
 - (G) THERMOPLASTIC PAVEMENT MARKING - WHITE LINE, 24" (STOP BAR)
 - (H) THERMOPLASTIC PAVEMENT MARKING - WHITE LINE, LETTERS AND SYMBOLS
 - (J) THERMOPLASTIC PAVEMENT MARKING - YELLOW LINE, 12" DIAGONAL LINE (20' C-C)
 - (K) THERMOPLASTIC PAVEMENT MARKING - WHITE LINE, 12" DIAGONAL CROSSWALK (3' C-C)
- DETECTOR LOOP REPLACEMENT

NOTES

1. SEE TC-13 DISTRICT ONE TYPICAL PAVEMENT MARKING FOR GUIDANCE.
2. ALL PAVEMENT MARKINGS SHALL BE THERMOPLASTIC UNLESS OTHERWISE SHOWN.

FILE NAME = 16R0300-PLAN-01 - REL_22X34 (4)
PLOT SCALE =
PLOT DATE = 03-30-22

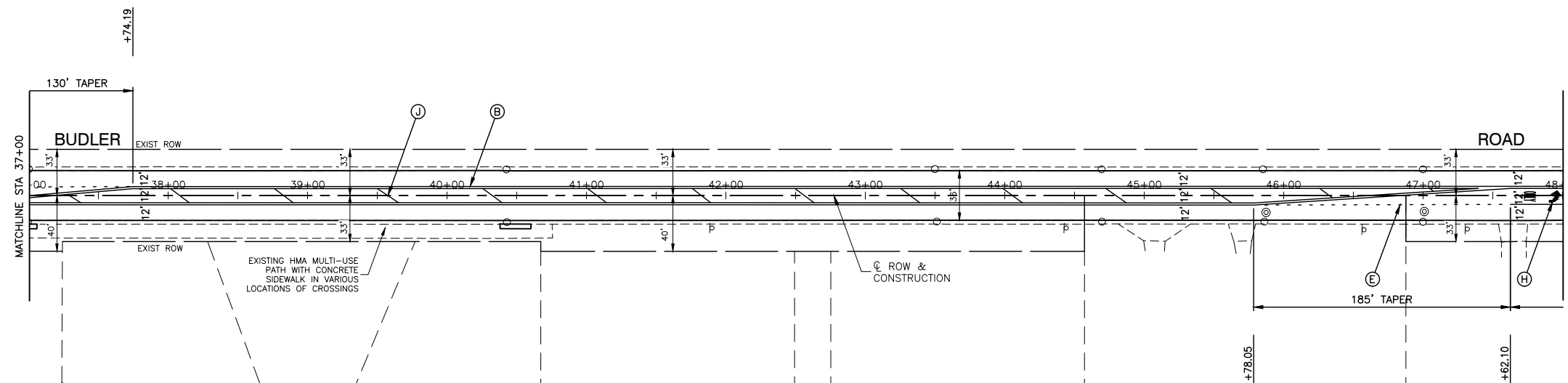
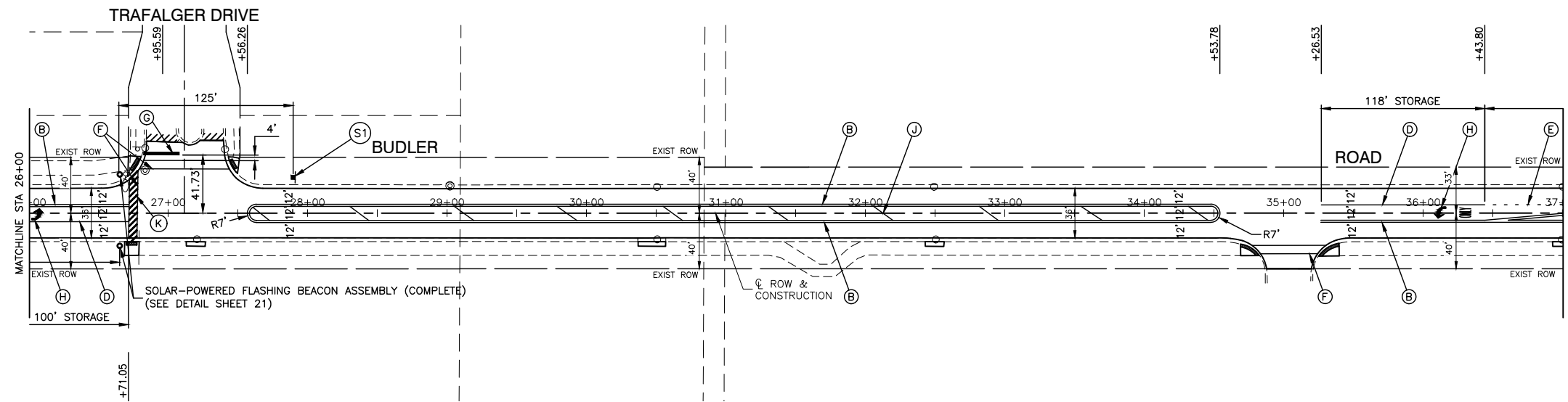
USER NAME =
DESIGNED -- MPN
CHECKED -- WPD
DRAWN -- MD/RG
CHECKED -- AG

REVISED --
REVISED --
REVISED --
REVISED --

STATE OF ILLINOIS
DEPARTMENT OF TRANSPORTATION

BUDLER ROAD
ROADWAY RESURFACING
PAVEMENT MARKING AND SIGNAGE PLAN
SCALE: 1"=50'
SHEET NO. 10 OF 24 SHEETS
STA. TO STA.

F.A.U. RTE.	SECTION	COUNTY	TOTAL SHEETS	SHEET NO.
5430	22-00073-00-RS	WILL	24	10
CONTRACT NO. 61H76				
FED. ROAD DIST. NO. 1 ILLINOIS FED. AID PROJECT G9H9(536)				



W11-15
36"X36"

AHEAD

W16-9p
24"X12"
15.5' POST

(S1)

PAVEMENT MARKING LEGEND

- (B) THERMOPLASTIC PAVEMENT MARKING - YELLOW LINE, 4" DOUBLE LINE (11" C/C)
 - (D) THERMOPLASTIC PAVEMENT MARKING - WHITE LINE, 6" LINE
 - (E) THERMOPLASTIC PAVEMENT MARKING - WHITE LINE, 6" SKIP DASH (2' LINE-6' SPACE)
 - (F) THERMOPLASTIC PAVEMENT MARKING - WHITE LINE, 6" CROSSWALK (6' C-C)
 - (G) THERMOPLASTIC PAVEMENT MARKING - WHITE LINE, 24" (STOP BAR)
 - (H) THERMOPLASTIC PAVEMENT MARKING - WHITE LINE, LETTERS AND SYMBOLS
 - (J) THERMOPLASTIC PAVEMENT MARKING - YELLOW LINE, 12" DIAGONAL LINE (20' C-C)
 - (K) THERMOPLASTIC PAVEMENT MARKING - WHITE LINE, 12" DIAGONAL CROSSWALK (3' C-C)
- DETECTOR LOOP REPLACEMENT

NOTES

1. SEE TC-13 DISTRICT ONE TYPICAL PAVEMENT MARKING FOR GUIDANCE.
2. ALL PAVEMENT MARKINGS SHALL BE THERMOPLASTIC UNLESS OTHERWISE SHOWN.

FILE NAME = 16R0300-PLAN-01 - REL_22X34 (5)

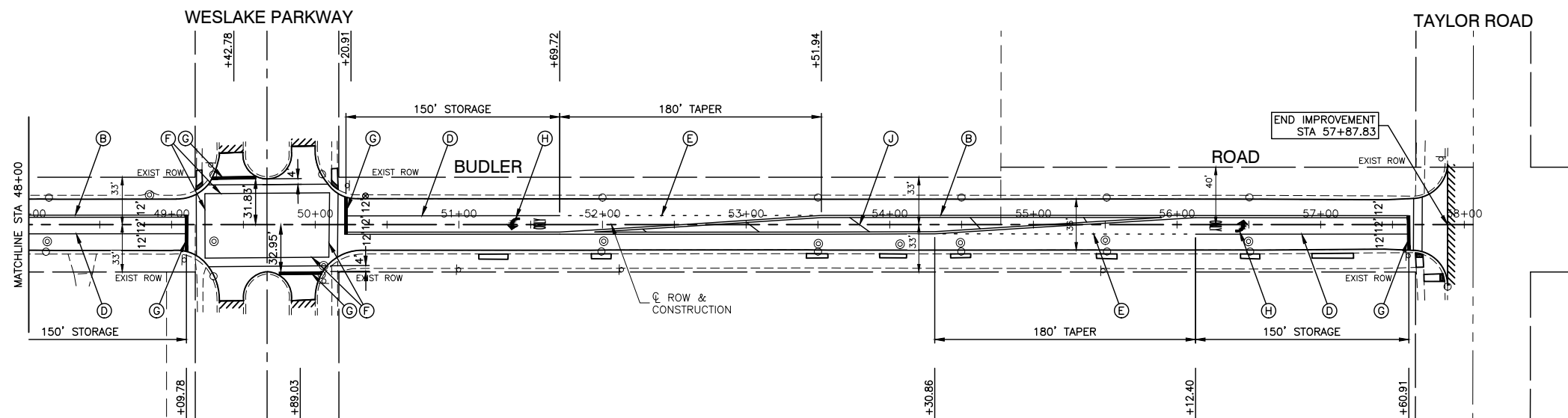
USER NAME =	DESIGNED -- MPN	REVISED --
	CHECKED -- WPD	REVISED --
PLOT SCALE =	DRAWN -- MD/RG	REVISED --
PLOT DATE = 03-30-22	CHECKED -- AG	REVISED --

STATE OF ILLINOIS
DEPARTMENT OF TRANSPORTATION

BUDLER ROAD
ROADWAY RESURFACING
PAVEMENT MARKING AND SIGNAGE PLAN

SCALE: 1"=50' SHEET NO. 11 OF 24 SHEETS STA. TO STA.

F.A.U. RTE.	SECTION	COUNTY	TOTAL SHEETS	SHEET NO.
5430	22-00073-00-RS	WILL	24	11
CONTRACT NO. 61H76				
FED. ROAD DIST. NO. 1 ILLINOIS FED. AID PROJECT G9H9(536)				



W11-15
36"X36"

AHEAD

W16-9p
24"X12"
15.5' POST

(S1)

PAVEMENT MARKING LEGEND

- (B) THERMOPLASTIC PAVEMENT MARKING - YELLOW LINE, 4" DOUBLE LINE (11" C/C)
- (D) THERMOPLASTIC PAVEMENT MARKING - WHITE LINE, 6" LINE
- (E) THERMOPLASTIC PAVEMENT MARKING - WHITE LINE, 6" SKIP DASH (2' LINE-6' SPACE)
- (F) THERMOPLASTIC PAVEMENT MARKING - WHITE LINE, 6" CROSSWALK (6' C-C)
- (G) THERMOPLASTIC PAVEMENT MARKING - WHITE LINE, 24" (STOP BAR)
- (H) THERMOPLASTIC PAVEMENT MARKING - WHITE LINE, LETTERS AND SYMBOLS
- (J) THERMOPLASTIC PAVEMENT MARKING - YELLOW LINE, 12" DIAGONAL LINE (20' C-C)
- (K) THERMOPLASTIC PAVEMENT MARKING - WHITE LINE, 12" DIAGONAL CROSSWALK (3' C-C)

□ DETECTOR LOOP REPLACEMENT

NOTES

1. SEE TC-13 DISTRICT ONE TYPICAL PAVEMENT MARKING FOR GUIDANCE.
2. ALL PAVEMENT MARKINGS SHALL BE THERMOPLASTIC UNLESS OTHERWISE SHOWN.

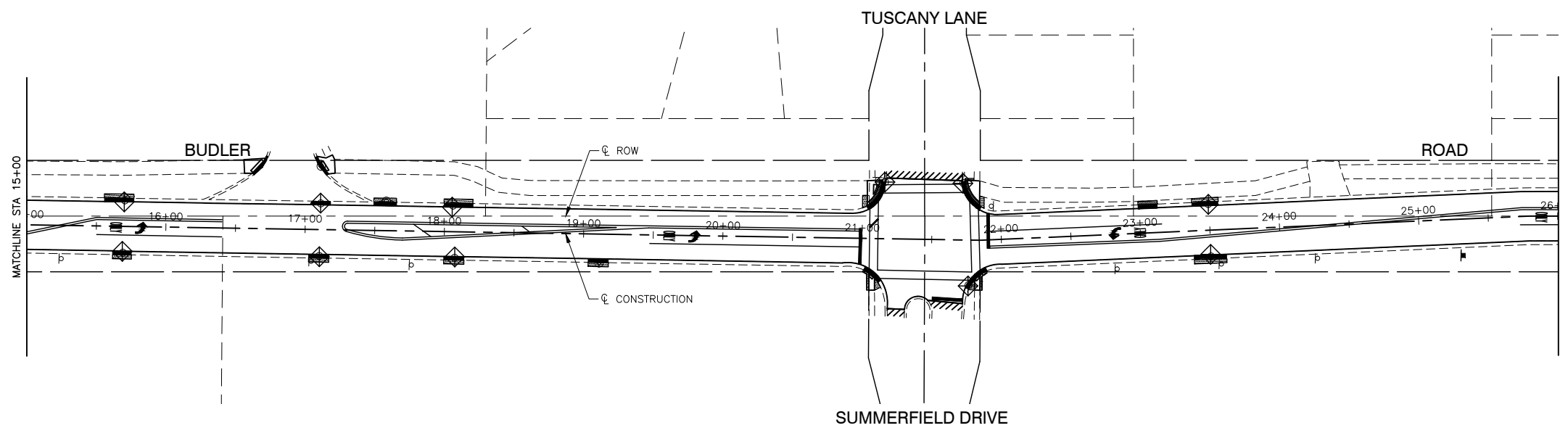
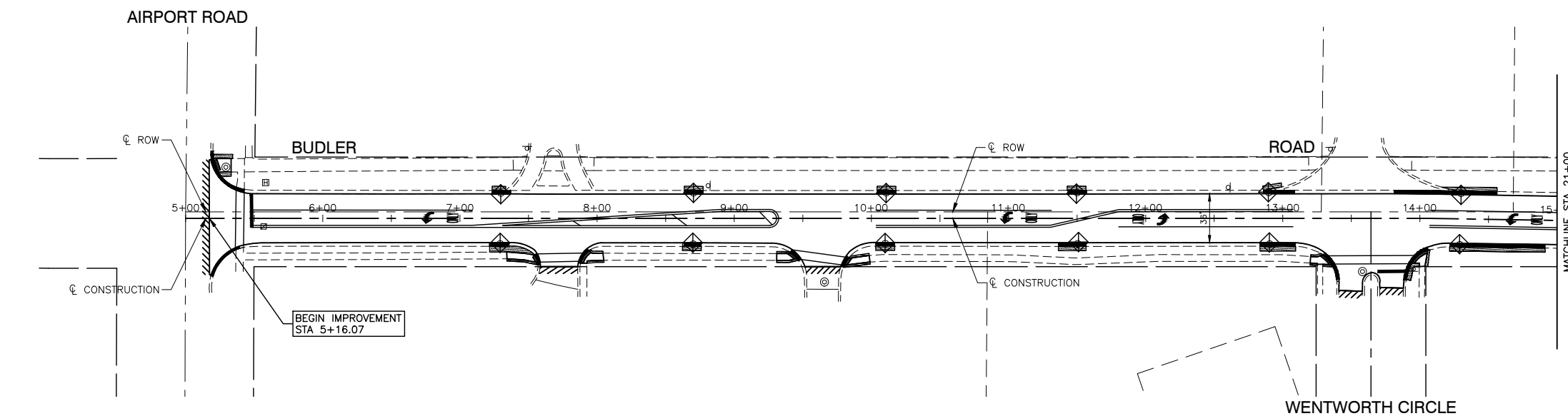
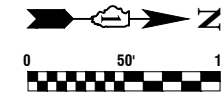
FILE NAME = 16R0300-PLAN-01 - REL_22X34 (6)	USER NAME =	DESIGNED -- MPN	REVISED --
		CHECKED -- WPD	REVISED --
	PLOT SCALE =	DRAWN -- MD/RG	REVISED --
	PLOT DATE = 03-30-22	CHECKED -- AG	REVISED --

STATE OF ILLINOIS
DEPARTMENT OF TRANSPORTATION

BUDLER ROAD
ROADWAY RESURFACING
PAVEMENT MARKING AND SIGNAGE PLAN

SCALE: 1"=50' SHEET NO. 12 OF 24 SHEETS STA. TO STA.

F.A.U. RTE.	SECTION	COUNTY	TOTAL SHEETS	SHEET NO.
5430	22-00073-00-RS	WILL	24	12
CONTRACT NO. 61H76				
FED. ROAD DIST. NO. 1	ILLINOIS	FED. AID PROJECT	G9H9(536)	



LEGEND

- SEEDING (COMPLETE)
- INLTER FILTER

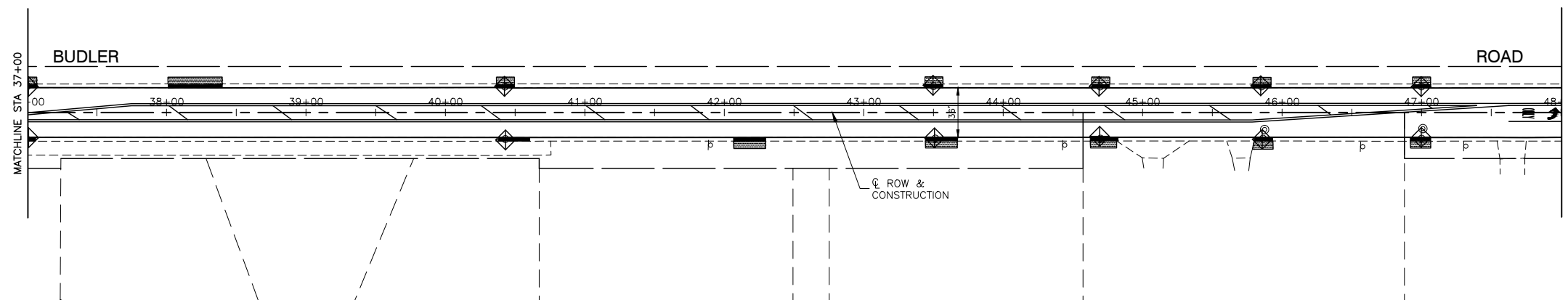
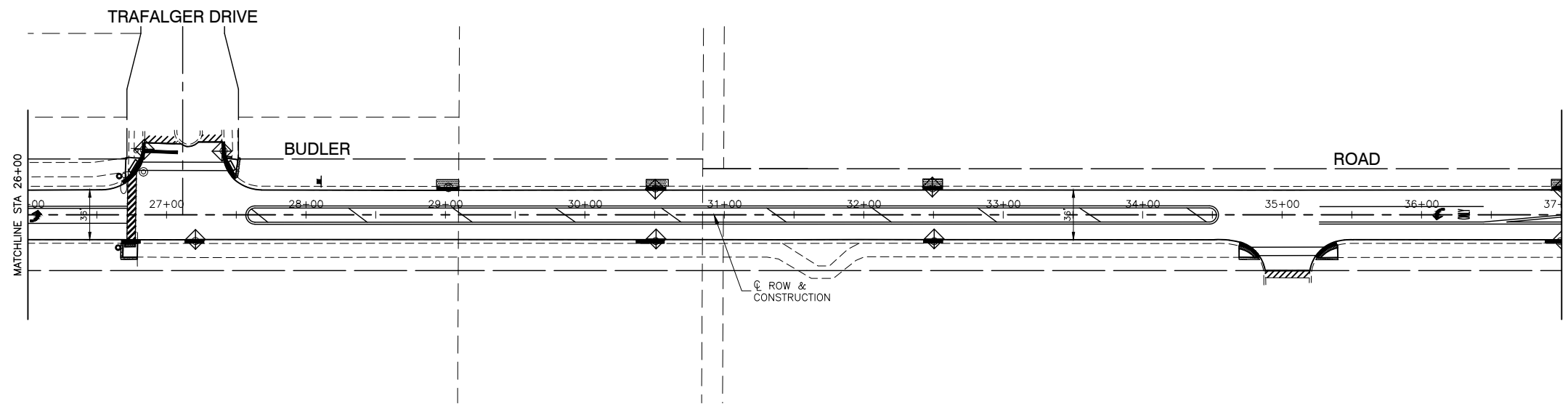
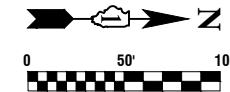
FILE NAME = 16R0300-LNSC-01 - LNSC(1)

USER NAME =	DESIGNED -- MPN	REVISED --
	CHECKED -- WPD	REVISED --
PLOT SCALE =	DRAWN -- MD/RG	REVISED --
PLOT DATE = 03-30-22	CHECKED -- AG	REVISED --



**STATE OF ILLINOIS
DEPARTMENT OF TRANSPORTATION**

BUDLER ROAD ROADWAY RESURFACING LANDSCAPE AND EROSION CONTROL PLAN	
SCALE: 1"=50'	STA. TO STA.
SHEET NO. 13 OF 24 SHEETS	

F.A.U. RTE.	SECTION	COUNTY	TOTAL SHEETS	SHEET NO.
5430	22-00073-00-RS	WILL	24	13
CONTRACT NO. 61H76				
FED. ROAD DIST. NO. 1 ILLINOIS FED. AID PROJECT G9H9(536)				



LEGEND

-  SEEDING (COMPLETE)
-  INLTER FILTER

FILE NAME = 16R0300-LNSC-01 - LNSC(2)

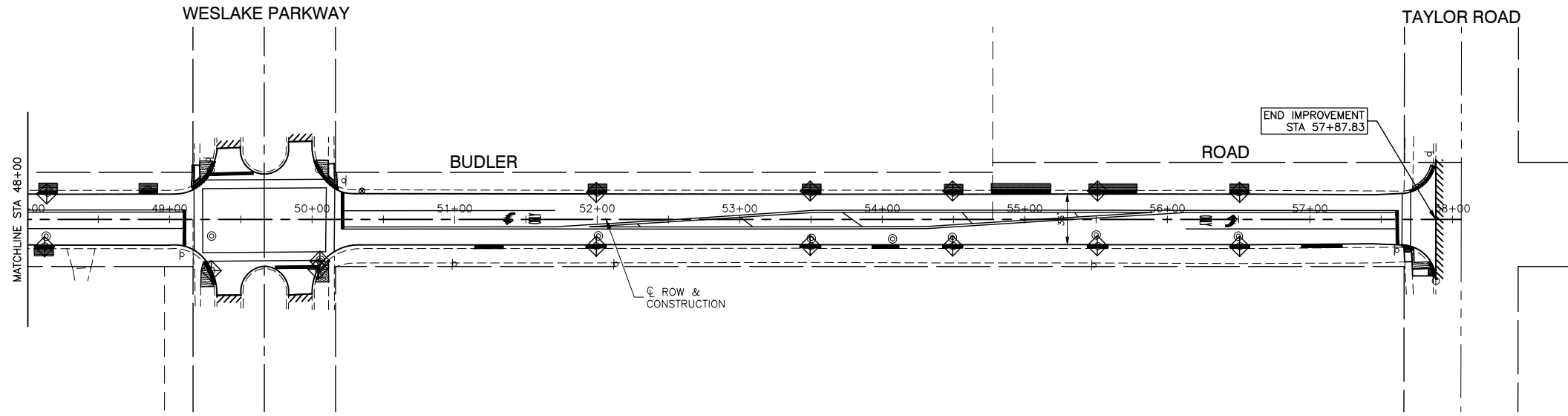
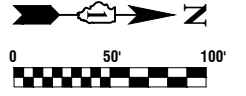
USER NAME =	DESIGNED -- MPN	REVISED --
	CHECKED -- WPD	REVISED --
PLOT SCALE =	DRAWN -- MD/RG	REVISED --
PLOT DATE = 03-30-22	CHECKED -- AG	REVISED --

STATE OF ILLINOIS
DEPARTMENT OF TRANSPORTATION



BUDLER ROAD
ROADWAY RESURFACING
LANDSCAPE AND EROSION CONTROL PLAN

SCALE: 1"=50' SHEET NO. 14 OF 24 SHEETS STA. TO STA.

F.A.U. RTE.	SECTION	COUNTY	TOTAL SHEETS	SHEET NO.
5430	22-00073-00-RS	WILL	24	14
CONTRACT NO. 61H76				
FED. ROAD DIST. NO. 1 ILLINOIS FED. AID PROJECT G9H9(536)				



LEGEND

-  SEEDING (COMPLETE)
-  INLTER FILTER

FILE NAME = 16R0300-LNSC-01 - LNSC(3)

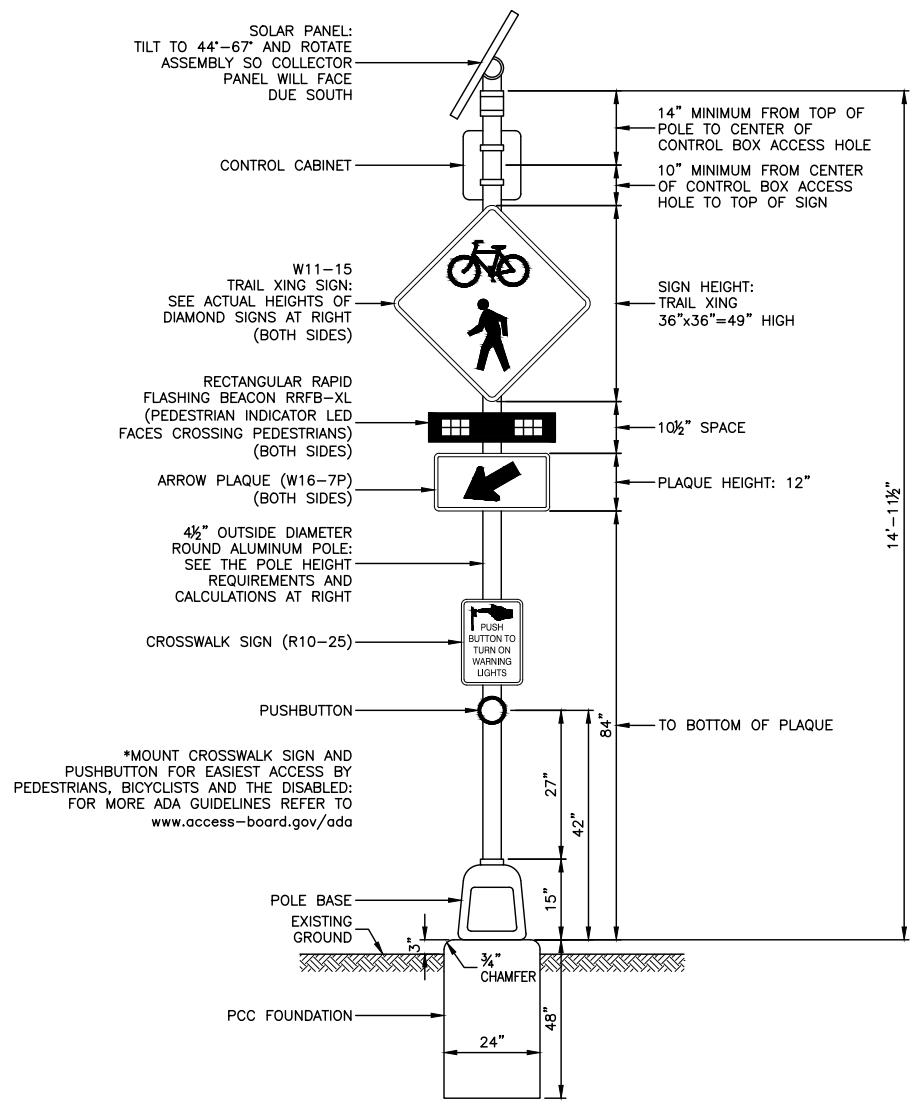
USER NAME =	DESIGNED -- MPN	REVISED --
	CHECKED -- WPD	REVISED --
PLOT SCALE =	DRAWN -- MD/RG	REVISED --
PLOT DATE = 03-30-22	CHECKED -- AG	REVISED --

**STATE OF ILLINOIS
DEPARTMENT OF TRANSPORTATION**

**BUDLER ROAD
ROADWAY RESURFACING
LANDSCAPE AND EROSION CONTROL PLAN**

SCALE: 1"=50' SHEET NO. 15 OF 24 SHEETS STA. TO STA.

F.A.U. RTE.	SECTION	COUNTY	TOTAL SHEETS	SHEET NO.
5430	22-00073-00-RS	WILL	24	15
CONTRACT NO. 61H76				
FED. ROAD DIST. NO. 1 ILLINOIS FED. AID PROJECT G9H9(536)				



TYPICAL RECTANGULAR RAPID FLASHING BEACON CONFIGURATION

NOTES

1. THE SCHEDULE OF QUANTITIES LISTS ITEMS INCLUDED FOR ONE COMPLETE ASSEMBLY.
2. SEE THE SPECIAL PROVISIONS FOR SOLAR POWERED FLASHING BEACON ASSEMBLY (COMPLETE) FOR FURTHER DETAILS.
3. TRAIL CROSSING, ARROW PLAQUES, AND RRFB SHALL BE INSTALLED FACING BOTH DIRECTIONS OF VEHICLE TRAFFIC ON EACH SIDE OF THE TRAIL CROSSING.

SCHEDULE OF QUANTITIES PER ASSEMBLY

ITEM	UNIT	QUAN
SOLAR PANEL	EACH	1
CONTROL CABINET AND ELECTRICAL COMPONENTS	EACH	1
RRFB-XL	EACH	2
PEDESTRIAN PUSHBUTTON	EACH	1
4 1/2" DIAMETER ALUMINUM POLE	EACH	1
P.C.C. FOUNDATION	EACH	1
TRAIL CROSSING SIGN	EACH	2
ARROW PLAQUE	EACH	2
CROSSWALK SIGN	EACH	1

FILE NAME = 16R0300-DTLS-02 - IDOT P01

USER NAME =	DESIGNED -- MPN	REVISED --
	CHECKED -- WPD	REVISED --
PLOT SCALE =	DRAWN -- KW/RG	REVISED --
PLOT DATE = 03-30-22	CHECKED -- AG	REVISED --

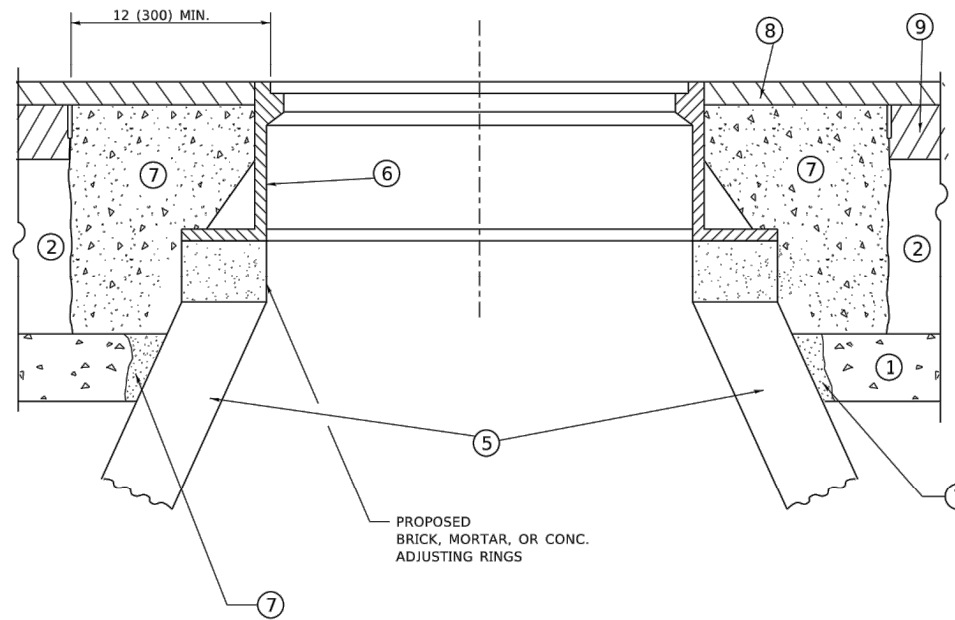
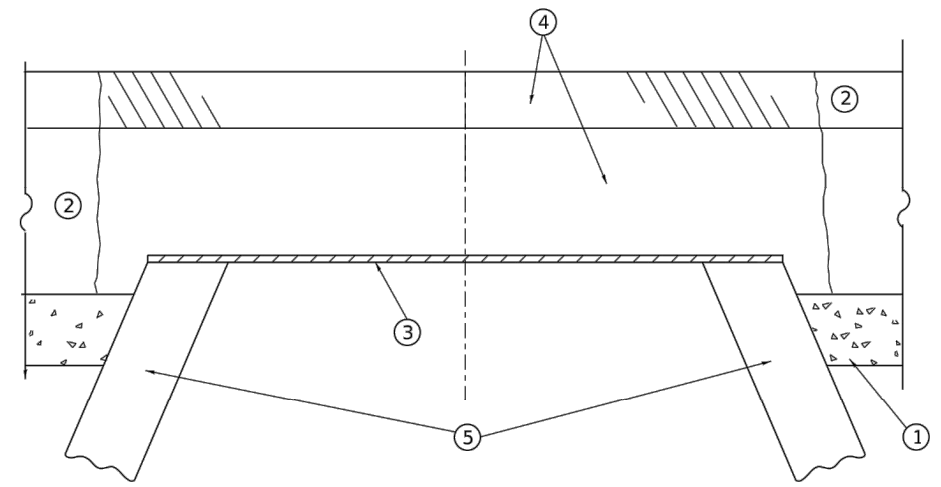
STATE OF ILLINOIS
DEPARTMENT OF TRANSPORTATION

ROADWAY RESURFACING
BUDLER ROAD
DETAILS

SCALE: NONE SHEET NO. 16 OF 24 SHEETS STA. TO STA.

F.A.U. RTE.	SECTION	COUNTY	TOTAL SHEETS	SHEET NO.
5430	22-00073-00-RS	WILL	24	16
CONTRACT NO. 61H76				
FED. ROAD DIST. NO. 1	ILLINOIS	FED. AID PROJECT	G9H9(536)	

LAST SAVED BY: RICHARD GONDEK ON 3/24/22
PLOTTED BY: RICHARD GONDEK ON 4/1/22



**DETAILS FOR FRAMES AND LIDS ADJUSTMENT
WITH MILLING**

CONSTRUCTION PROCEDURES

STAGE 1 (BEFORE PAVEMENT MILLING)

- A) REMOVE A MINIMUM OF 12 (300) OF THE PAVEMENT FROM AROUND THE STRUCTURE.
- B) REMOVE THE EXISTING FRAME AND LID FROM THE STRUCTURE.
- C) COVER THE STRUCTURE OPENING WITH A 36 (900) DIAMETER METAL PLATE.
- D) BACKFILL WITH CRUSHED STONE AND HMA SURFACE MIX APPROVED BY THE ENGINEER. (MIN. 1 1/2 (40) HMA TO REMAIN AFTER MILLING).

STAGE 2 (AFTER PAVEMENT MILLING)

- A) REMOVE THE HMA SURFACE MIX AND CRUSHED STONE.
- B) INSTALL THE FRAME AND LID; ADJUST THE FRAME TO ITS FINAL SURFACE ELEVATION.
- C) THE SURROUNDING SPACE SHALL BE FILLED WITH CLASS*PP-1 CONCRETE TO THE ELEVATION OF THE SURFACE OF THE EXISTING BASE COURSE OR THE BINDER COURSE.

* UNLESS OTHERWISE SPECIFIED IN THE PLANS.

THE PROCEDURE EXPLAINED ABOVE SHALL CONFORM TO THE APPLICABLE PORTIONS OF SECTIONS 353, 406, 602, AND 603 OF THE STANDARD SPECIFICATIONS EXCEPT THAT "THE CONTRACTOR SHALL ADJUST THE STRUCTURES TO THE FINISHED PAVEMENT ELEVATION NO MORE THAN 5 CALENDAR DAYS PRIOR TO PLACEMENT OF THE FINAL LIFT OF SURFACE UNLESS APPROVED BY THE ENGINEER."

LEGEND

- | | |
|--|-------------------------------|
| ① SUB-BASE GRANULAR MATERIAL | ⑥ FRAME AND LID (SEE NOTES) |
| ② EXISTING PAVEMENT | ⑦ CLASS*PP-1 CONCRETE |
| ③ 36 (900) DIAMETER METAL PLATE | ⑧ PROPOSED HMA SURFACE COURSE |
| ④ PROPOSED CRUSHED STONE AND HMA SURFACE MIX | ⑨ PROPOSED HMA BINDER COURSE |
| ⑤ EXISTING STRUCTURE | |

LOCATION OF STRUCTURES

THE CONTRACTOR WILL BE REQUIRED TO KEEP A RECORD OF THE LOCATIONS OF THE BURIED STRUCTURES ACCORDING TO THE STATION AND DISTANCE LEFT OR RIGHT OF THE CENTERLINE OF PAVEMENT. UPON COMPLETION OF THE WORK, THE CONTRACTOR WILL DELIVER THE RECORD TO THE ENGINEER.

BASIS OF PAYMENT

1. REMOVING FRAMES AND LIDS ON DRAINAGE AND UTILITY STRUCTURES IN THE PAVEMENT PRIOR TO MILLING, AND ADJUSTING TO FINAL GRADE PRIOR TO PLACING THE SURFACE COURSE, WILL BE PAID FOR AT THE CONTRACT UNIT PRICE EACH FOR "FRAMES AND LIDS TO BE ADJUSTED (SPECIAL)."
2. THIS WORK WILL NOT BE PAID FOR WHEN DRAINAGE AND UTILITY STRUCTURES ARE SPECIFIED FOR PAYMENT AS STRUCTURE RECONSTRUCTION.
3. NEW FRAMES AND LIDS, WHEN SPECIFIED, WILL BE PAID FOR SEPARATELY.
4. WHEN STRUCTURES ARE TO BE ADJUSTED OR RECONSTRUCTED, THE LOWERING AND RAISING OF THE FRAMES AND LIDS WILL NOT BE PAID FOR SEPARATELY BUT WILL BE INCLUDED IN THE COST OF THE CORRESPONDING PAY ITEM.

NOTES

1. EXISTING BROKEN FRAMES AND LIDS SHALL BE REMOVED AND DISPOSED OF BY THE CONTRACTOR AND SHALL BE REPLACED AS DIRECTED BY THE ENGINEER. REPLACEMENT FRAMES AND LIDS WILL BE PAID FOR IN ACCORDANCE WITH ARTICLE 109.04 OF THE STANDARD SPECIFICATIONS UNLESS A SEPARATE PAY ITEM HAS BEEN PROVIDED.
2. IF THE EXISTING LIDS ARE OPEN, THE FRAME WILL BE ADJUSTED TO THE ELEVATION OF THE MILLED PAVEMENT SURFACE PRIOR TO THE MILLING OPERATION. THE FRAME WILL NOT BE REMOVED AND COVERED BY THE METAL PLATE.
3. CITY OF CHICAGO CASTINGS ARE THE PROPERTY OF THE CITY AND THE CONTRACTOR SHALL NOTIFY THE CITY FOR REMOVAL AND DISPOSITION OF THE CASTINGS.
4. THE METAL PLATE USED TO COVER THE STRUCTURE SHALL REMAIN THE PROPERTY OF THE CONTRACTOR.

ALL DIMENSIONS ARE IN INCHES (MILLIMETERS) UNLESS OTHERWISE SHOWN

FILE NAME = 16R0300-DTLS-01 - BD08	USER NAME = demanchelt	DESIGNED -- R. SHAH	REVISED -- R. BORO 01-01-07
		CHECKED --	REVISED -- R. BORO 03-09-11
	PLOT SCALE = 100.0000' / in.	DRAWN --	REVISED -- R. BORO 12-06-11
	PLOT DATE = 2/2/2022	CHECKED -- 10-25-94	REVISED -- K. SMITH 02-01-22

STATE OF ILLINOIS
DEPARTMENT OF TRANSPORTATION

DETAILS FOR
FRAMES AND LIDS ADJUSTMENT WITH MILLING

SCALE: NONE SHEET NO. 17 OF 24 SHEETS STA. TO STA.

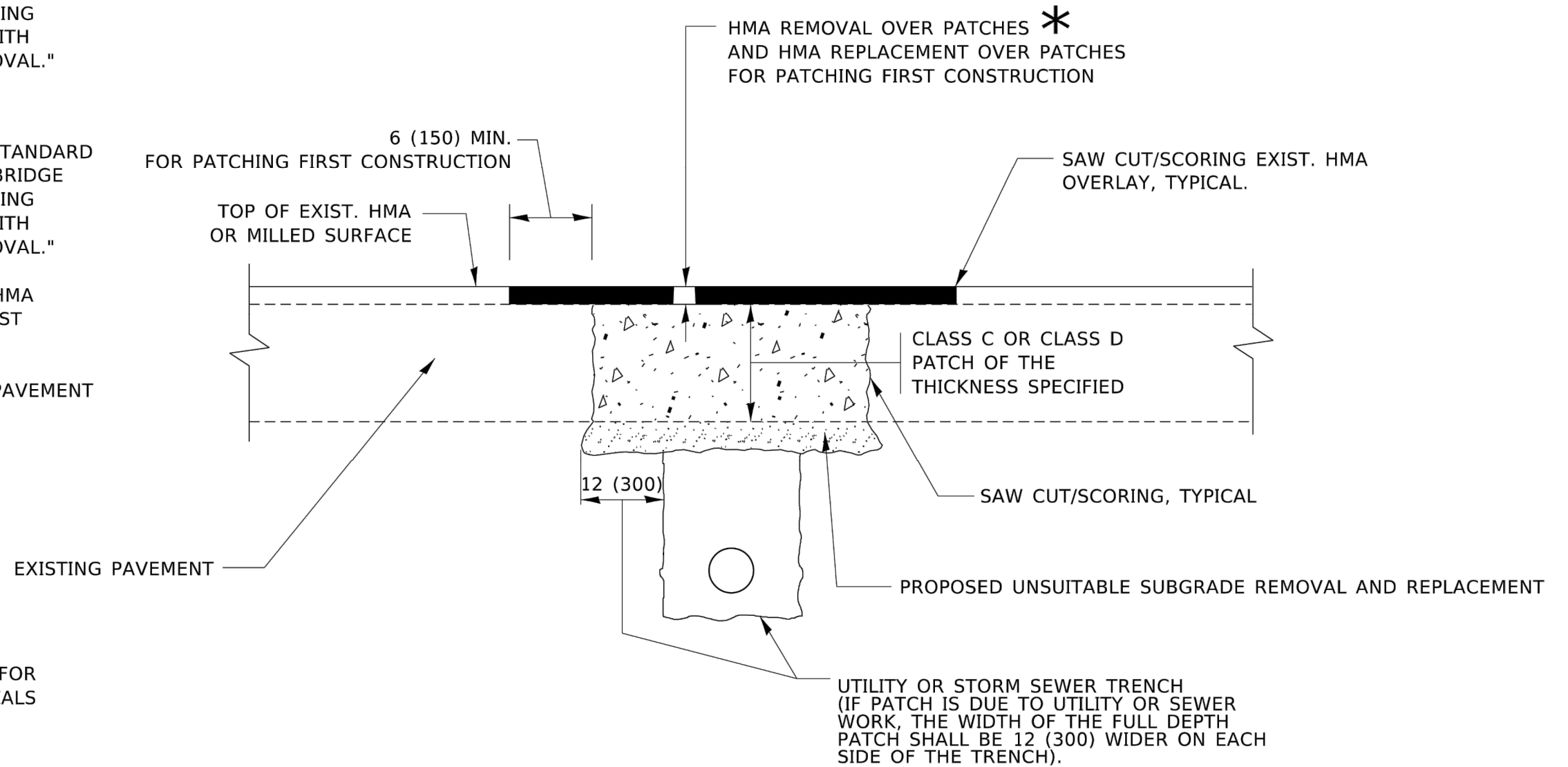
F.A.U. RTE.	SECTION	COUNTY	TOTAL SHEETS	SHEET NO.
5430	22-00073-00-RS	WILL	24	17
BD600-03 (BD-08)		CONTRACT NO. 61H76		
FED. ROAD DIST. NO. 1	ILLINOIS	FED. AID PROJECT G9H9(536)		

METHOD OF MEASUREMENT

REFER TO SECTION 442 OF THE STANDARD SPECIFICATIONS FOR ROAD AND BRIDGE CONSTRUCTION AND THE RECURRING SPECIAL PROVISION "PATCHING WITH HOT-MIX ASPHALT OVERLAY REMOVAL."

BASIS OF PAYMENT

1. REFER TO SECTION 442 OF THE STANDARD SPECIFICATIONS FOR ROAD AND BRIDGE CONSTRUCTION AND THE RECURRING SPECIAL PROVISION "PATCHING WITH HOT-MIX ASPHALT OVERLAY REMOVAL."
2. SAW CUT/SCORING OF EXISTING HMA OVERLAY IS INCLUDED IN THE COST OF PAVEMENT PATCHING.
3. SAW CUT/SCORING OF EXISTING PAVEMENT IS INCLUDED IN THE COST OF PAVEMENT PATCHING.



* SEE TYPICAL SECTIONS FOR THICKNESS AND MATERIALS

SEQUENCE OF CONSTRUCTION (PATCHING FIRST)

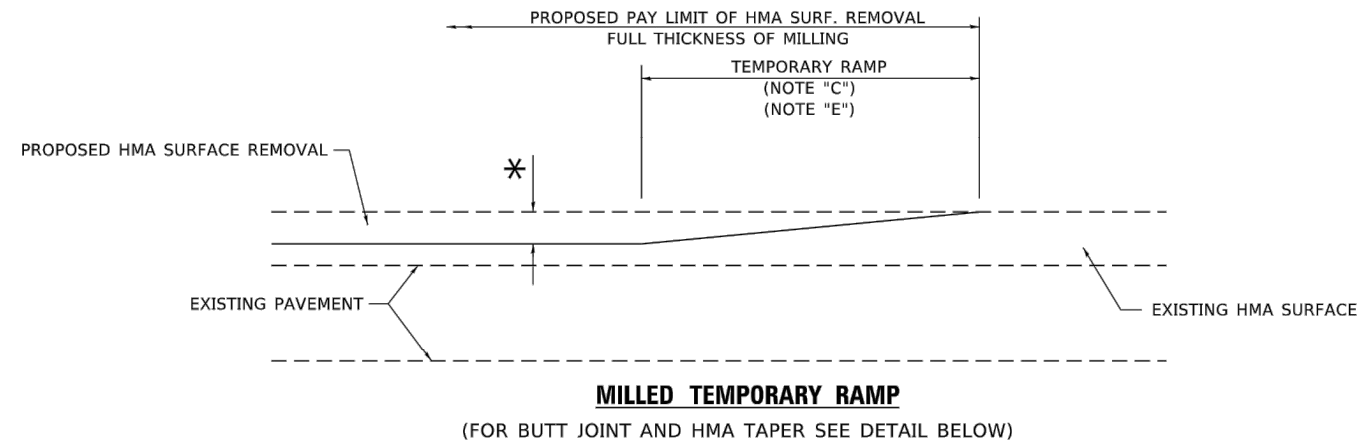
1. REMOVE THE EXISTING HMA MATERIAL OVER THE AREA TO BE PATCHED.
2. REMOVE AND REPLACE WITH CLASS C OR D PATCH.
3. REPLACE HMA MATERIAL OVER THE AREA TO BE PATCHED.

SEQUENCE OF CONSTRUCTION (MILLING FIRST)

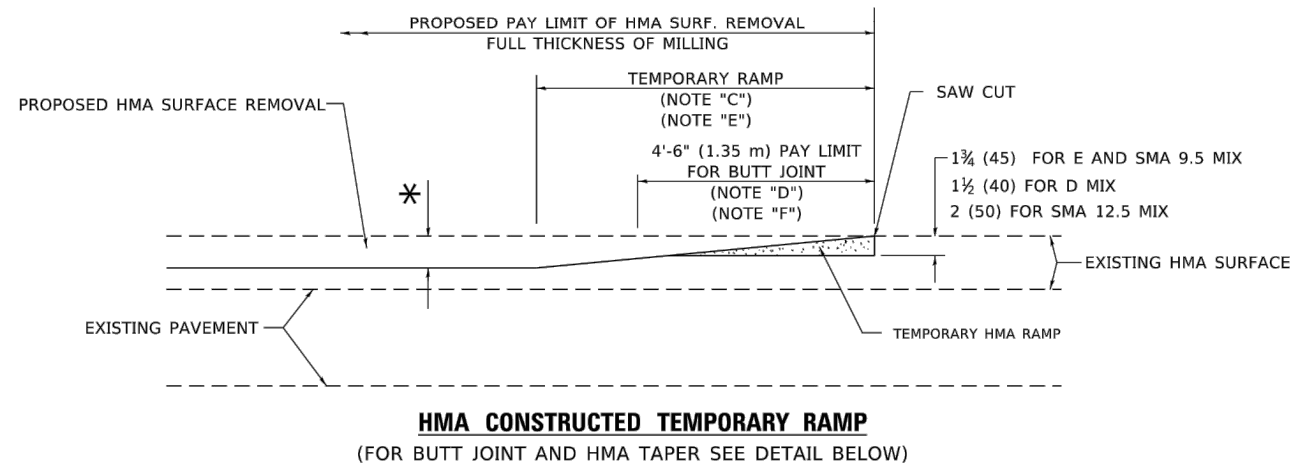
1. MILL HMA FIRST IF THERE IS AT LEAST 4½ INCHES OR MORE OF HMA MATERIAL ON TOP OF THE EXISTING PAVEMENT OR IF THE PAVEMENT IS FULL DEPTH HMA. A MINIMUM OF 2 INCHES OF HMA MATERIAL SHALL BE IN PLACE AFTER MILLING.
2. REMOVE AND REPLACE WITH FULL DEPTH CLASS D PATCHES TO TOP OF MILLED SURFACE.

ALL DIMENSIONS ARE IN INCHES (MILLIMETERS) UNLESS OTHERWISE SHOWN.

FILE NAME = 16R0300-DTLS-01 - 8D22	USER NAME = demancheit	DESIGNED -- R. SHAH	REVISED -- R. BORO 01-01-07	STATE OF ILLINOIS DEPARTMENT OF TRANSPORTATION	PAVEMENT PATCHING FOR HMA SURFACED PAVEMENT	F.A.U. RTE.	SECTION	COUNTY	TOTAL SHEETS	SHEET NO.	
		CHECKED --	REVISED -- R. BORO 09-04-07			5430	22-00073-00-RS	WILL	24	18	
	PLOT SCALE = 100.0000' / in.	DRAWN --	REVISED -- K. ENG 10-27-08			BD400-04 (BD-22)		CONTRACT NO. 61H76			
	PLOT DATE = 2/2/2022	CHECKED -- 10-25-94	REVISED -- K. SMITH 02-01-22			SCALE: NONE	SHEET NO. 18 OF 24 SHEETS	STA.	TO STA.		FED. ROAD DIST. NO. 1

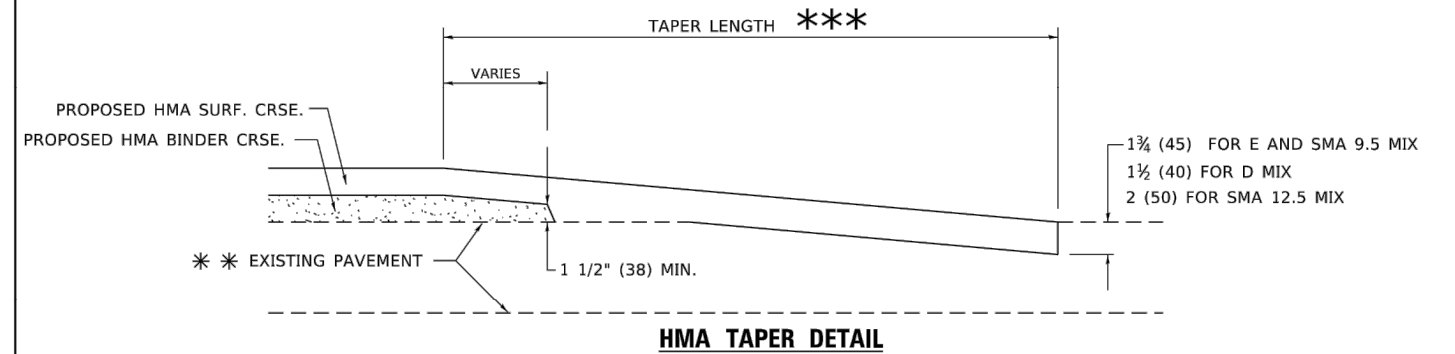
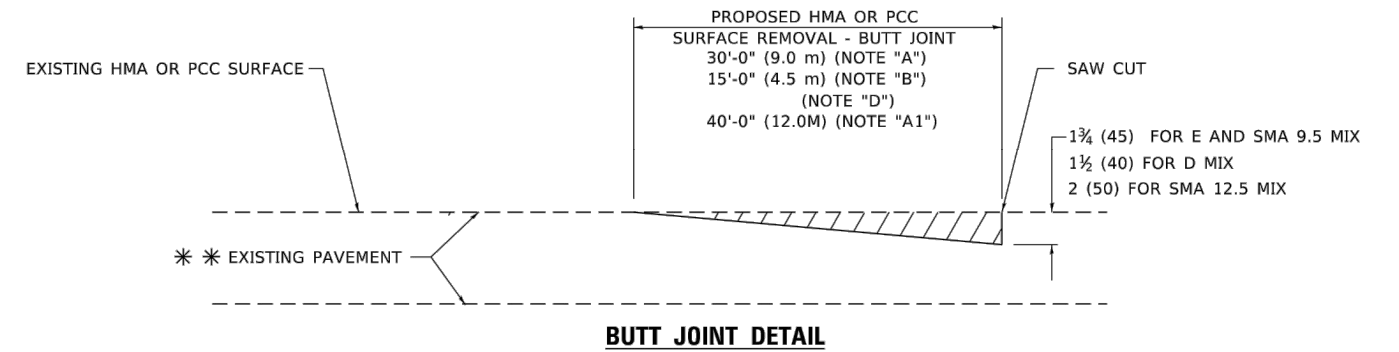


OPTION 1



OPTION 2

TYPICAL TEMPORARY RAMP



TYPICAL BUTT JOINT AND HMA TAPER FOR RESURFACING ONLY

** PC CONCRETE, HMA OR HMA RESURFACED PAVEMENT.

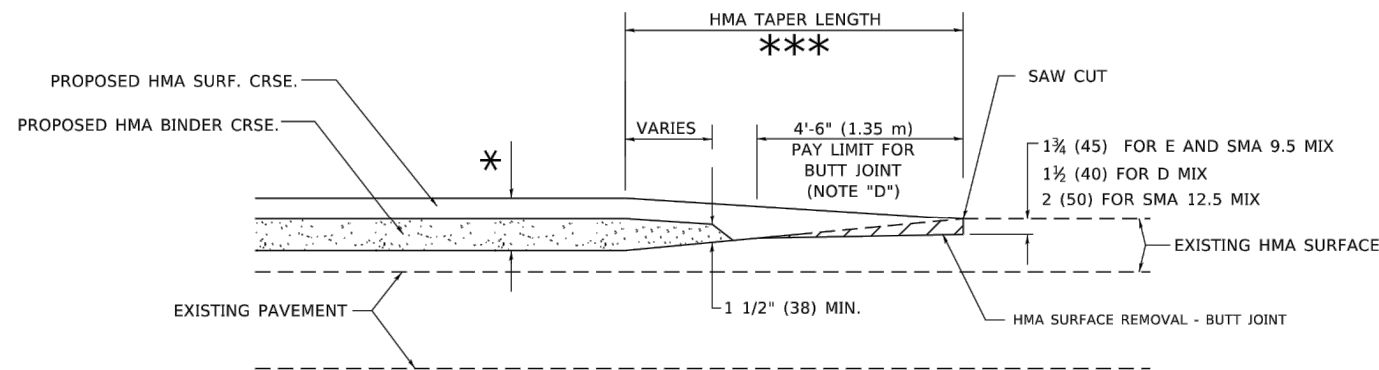
GENERAL NOTES

- A. MAINLINE ARTERIAL ROADWAYS AND MAJOR SIDE ROADS.
- A1. INTERSTATES
- B. MINOR SIDE ROADS.
- C. THE TEMP. RAMP SHALL BE CONSTRUCTED IMMEDIATELY UPON REMOVAL OF THE EXISTING HMA SURFACE.
- D. THE BUTT JOINT SHALL BE CONSTRUCTED IMMEDIATELY PRIOR TO PLACING THE PROPOSED HMA COURSES.
- E. TAPER THE TEMP. RAMP AT A RATE OF 3' - 4" (1.02m) PER 1 INCH (25 mm) OF MILLING THICKNESS.
* SEE TYPICAL SECTIONS FOR MILLING THICKNESS.
- F. SEE ARTICLE 406.08 AND 406.14 OF THE STANDARD SPECIFICATIONS FOR "HMA AND/OR PCC SURFACE REMOVAL, BUTT JOINT".
*** 20'-0" (6.1 m) PER 1 (25) RESURFACING (NOTE "A")
10'-0" (3.0 m) PER 1 (25) RESURFACING (NOTE "B")

BASIS OF PAYMENT

- 1. THE BUTT JOINT WILL BE PAID FOR AT THE CONTRACT UNIT PRICE PER SQUARE YARD (SQUARE METER) FOR "HOT-MIX ASPHALT SURFACE REMOVAL - BUTT JOINT" OR FOR "PORTLAND CEMENT CONCRETE SURFACE REMOVAL- BUTT JOINT".
- 2. THE TEMPORARY RAMP AND SAW CUT SHALL BE INCLUDED IN THE UNIT COST FOR HMA OR PCC SURFACE REMOVAL-BUTT JOINT.

ALL DIMENSIONS ARE IN INCHES (MILLIMETERS) UNLESS OTHERWISE SHOWN.



TYPICAL BUTT JOINT AND HMA TAPER FOR MILLING AND RESURFACING

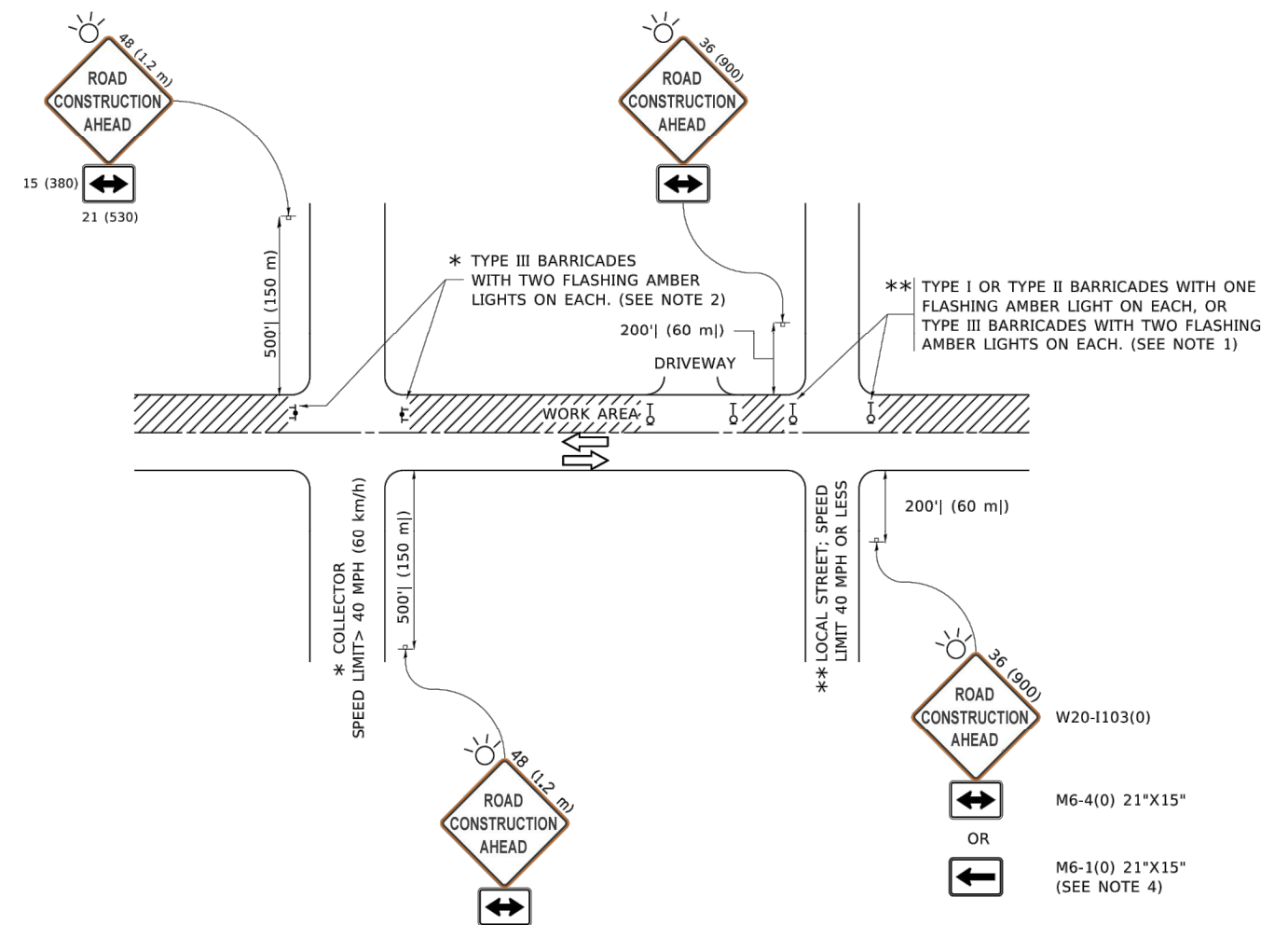
FILE NAME = 16R0300-DTLS-01 - BD32	USER NAME = demancheit	DESIGNED -- M. DE YONG	REVISED -- A. ABBAS 03-21-97
	CHECKED --	REVISOR -- M. GOMEZ 04-06-01	
PLOT SCALE = 100.0000" / in.	DRAWN --	REVISOR -- R. BORO 01-01-07	
PLOT DATE = 2/2/2022	CHECKED -- 06-13-90	REVISOR -- K. SMITH 02-01-22	

STATE OF ILLINOIS
DEPARTMENT OF TRANSPORTATION

BUTT JOINT AND HMA TAPER DETAILS

SCALE: NONE SHEET NO. 19 OF 24 SHEETS STA. TO STA.

F.A.U. RTE.	SECTION	COUNTY	TOTAL SHEETS	SHEET NO.
5430	22-00073-00-RS	WILL	24	19
BD400-05 BD-32		CONTRACT NO. 61H76		
FED. ROAD DIST. NO. 1 ILLINOIS FED. AID PROJECT G9H9(536)				



NOTES:

1. SIDE ROAD WITH A SPEED LIMIT OF 40 MPH (60 km/h) OR LESS AS SHOWN ON THE DRAWING AND AS DIRECTED BY THE ENGINEER:
 - a) ONE "ROAD CONSTRUCTION AHEAD" SIGN 36 x 36 (900x900) WITH A FLASHER MOUNTED ON IT APPROXIMATELY 200' (60 m) IN ADVANCE OF THE MAIN ROUTE.
 - b) THE CLOSED PORTION OF THE MAIN ROUTE SHALL BE PROTECTED BY BLOCKING WITH TYPE I, TYPE II OR TYPE III BARRICADES, 1/3 OF THE CROSS SECTION OF THE CLOSED PORTION.
2. SIDE ROAD WITH A SPEED LIMIT GREATER THAN 40 MPH (60 km/h) AS SHOWN ON THE DRAWING AND AS DIRECTED BY THE ENGINEER:
 - a) ONE "ROAD CONSTRUCTION AHEAD" SIGN 48 x 48 (1.2 m x 1.2 m) WITH A FLASHER MOUNTED ON IT APPROXIMATELY 500' (150 m) IN ADVANCE OF THE MAIN ROUTE.
 - b) BLOCKING WITH TYPE III BARRICADES, 1/2 OF THE CROSS SECTION OF THE CLOSED PORTION.
3. CONES MAY BE SUBSTITUTED FOR BARRICADES OR DRUMS AT HALF THE SPACING DURING DAY OPERATIONS. CONES SHALL BE A MINIMUM OF 28 (710) IN HEIGHT.
4. SIGNING AND THE WORK ZONE, A SINGLE HEADED ARROW (M6-1) SHALL BE USED IN LIEU OF THE DOUBLE HEADED ARROW (M6-4).
5. WHEN WORK IS BEING PERFORMED ON A SIDE ROAD OR DRIVEWAY, FOLLOW THE APPLICABLE STANDARD(S). THE DIRECTIONAL ARROW (M6-1 OR M6-4) SHALL BE COVERED OR REMOVED WHEN NO LONGER CONSISTENT WITH THE TRAFFIC CONTROL SET-UP.
6. ADVANCE WARNING SIGNS ARE TO BE OMITTED ON DRIVEWAYS UNLESS OTHERWISE SPECIFIED IN THE PLANS OR BY THE ENGINEER.
7. THE TRAFFIC CONTROL AND PROTECTION FOR SIDE ROADS, INTERSECTIONS, AND DRIVEWAYS SHALL BE INCLUDED IN THE COST OF SPECIFIED TRAFFIC CONTROL STANDARDS OR ITEMS.

All dimensions are in inches (millimeters) unless otherwise shown.

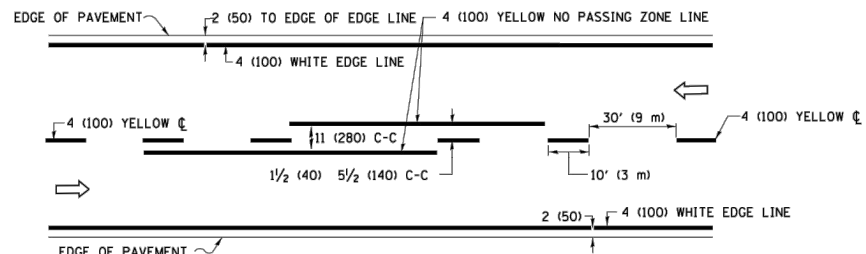
FILE NAME = 16R0300-DTLS-01 - TC10	USER NAME = footemj	DESIGNED -- L.H.A.	REVISED -- A. HOUSEH 10-15-96
		CHECKED --	REVISED -- T. RAMMACHER 01-06-00
	PLOT SCALE = 50.0000' / in.	DRAWN --	REVISED -- A. SCHUETZE 07-01-13
	PLOT DATE = 3/4/2019	CHECKED -- 06-89	REVISED -- A. SCHUETZE 09-15-16

STATE OF ILLINOIS
DEPARTMENT OF TRANSPORTATION

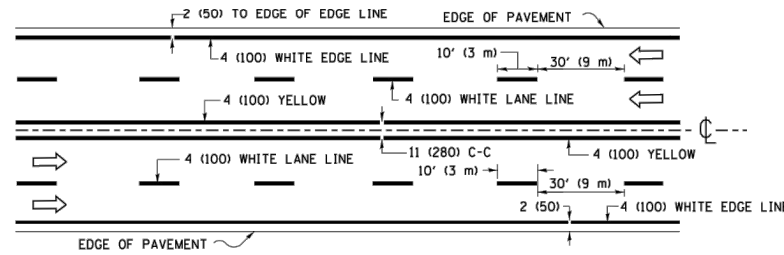
TRAFFIC CONTROL AND PROTECTION FOR
SIDE ROADS, INTERSECTIONS, AND DRIVEWAYS

SCALE: NONE SHEET NO. 20 OF 24 SHEETS STA. TO STA.

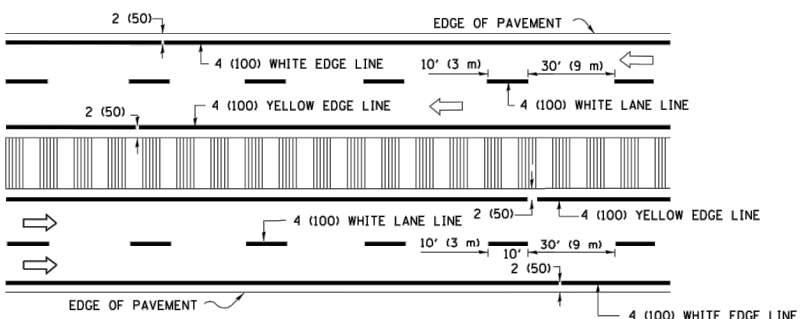
F.A.U. RTE.	SECTION	COUNTY	TOTAL SHEETS	SHEET NO.
5430	22-00073-00-RS	WILL	24	20
TC-10			CONTRACT NO. 61H76	
FED. ROAD DIST. NO. 1 ILLINOIS FED. AID PROJECT G9H9(536)				



2-LANE ROADWAY

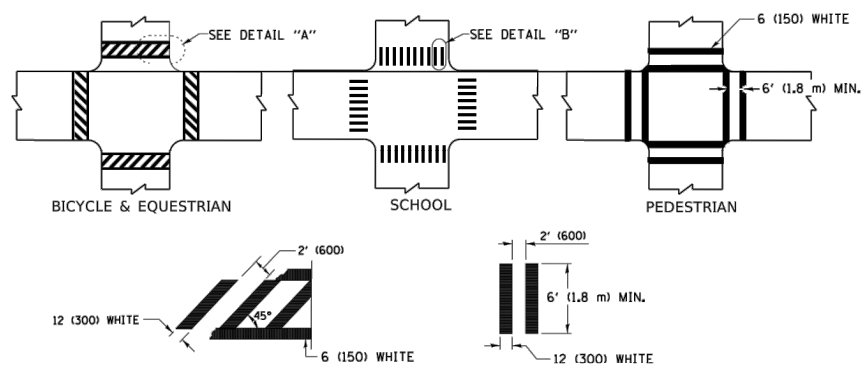


MULTI-LANE UNDIVIDED



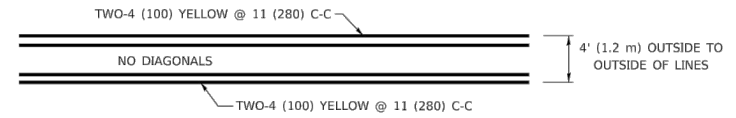
MULTI-LANE DIVIDED WITH MEDIAN

TYPICAL LANE AND EDGE LINE MARKING

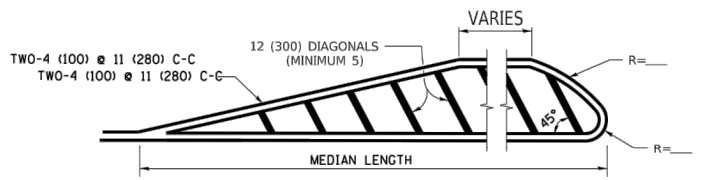


TYPICAL CROSSWALK MARKING

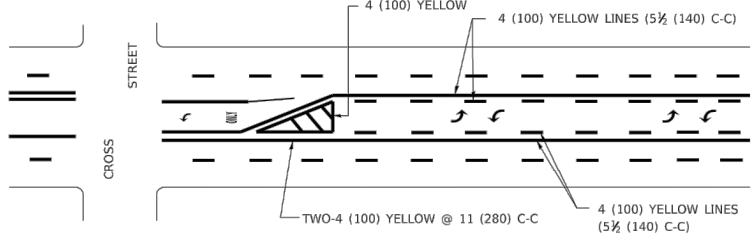
* MARKINGS SHALL BE INSTALLED PARALLEL TO THE CENTERLINE OF THE ROAD WHICH IT CROSSES



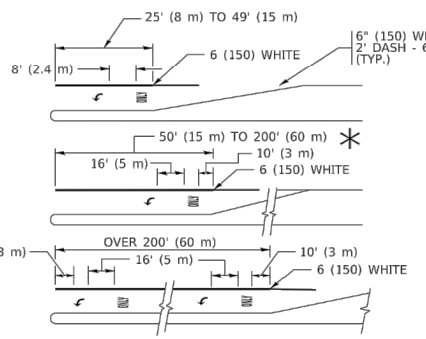
4' (1.2 m) WIDE MEDIANS ONLY



MEDIANS OVER 4' (1.2 m) WIDE

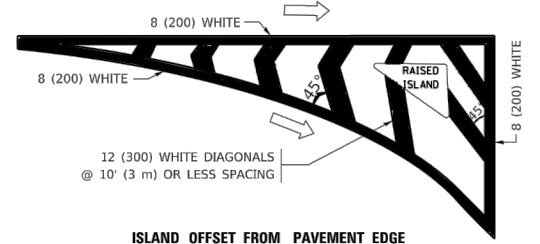


MEDIAN WITH TWO-WAY LEFT TURN LANE TYPICAL PAINTED MEDIAN MARKING

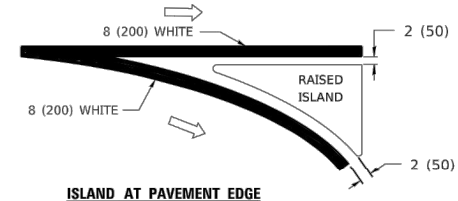


TYPICAL LEFT (OR RIGHT) TURN LANE TYPICAL TURN LANE MARKING

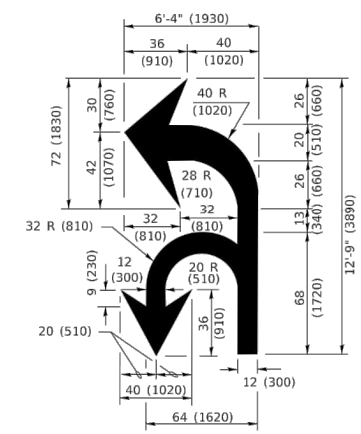
FULL SIZE LETTERS 8' (2.4 m) AND ARROWS SHALL BE USED.
 * TURN LANES IN EXCESS OF 400' (120 m) IN LENGTH MAY HAVE AN ADDITIONAL SET OF ARROW - "ONLY" INSTALLED MIDWAY BETWEEN THE OTHER TWO SETS OF ARROW - "ONLY".



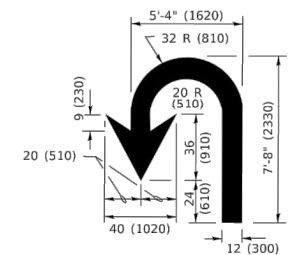
ISLAND OFFSET FROM PAVEMENT EDGE



ISLAND AT PAVEMENT EDGE TYPICAL ISLAND MARKING



COMBINATION LEFT AND U-TURN



U-TURN

LANE REDUCTION TRANSITION

* LANE REDUCTION ARROWS REQUIRED AT SPEEDS OF 45 MPH OR GREATER OR WHEN SPECIFIED IN PLANS.

D(FT)	SPEED LIMIT
345	30
425	35
500	40
580	45
665	50
750	55

TYPE OF MARKING	WIDTH OF LINE	PATTERN	COLOR	SPACING / REMARKS
CENTERLINE ON 2 LANE PAVEMENT	4 (100)	SKIP-DASH	YELLOW	10' (3 m) LINE WITH 30' (9 m) SPACE
CENTERLINE ON MULTI-LANE UNDIVIDED PAVEMENT	2 @ 4 (100)	SOLID	YELLOW	11 (280) C-C
NO PASSING ZONE LINES: FOR ONE DIRECTION FOR BOTH DIRECTIONS	4 (100) 2 @ 4 (100)	SOLID SOLID	YELLOW YELLOW	5 1/2 (140) C-C FROM SKIP-DASH CENTERLINE 11 (280) C-C OMIT SKIP-DASH CENTERLINE BETWEEN
LANE LINES	4 (100) 5 (125) ON FREEWAYS	SKIP-DASH SKIP-DASH	WHITE WHITE	10' (3 m) LINE WITH 30' (9 m) SPACE
DOTTED LINES (EXTENSIONS OF CENTER, LANE OR TURN LANE MARKINGS)	SAME AS LINE BEING EXTENDED	SKIP-DASH	SAME AS LINE BEING EXTENDED	2' (600) LINE WITH 6' (1.8 m) SPACE
EDGE LINES	4 (100)	SOLID	YELLOW-LEFT WHITE-RIGHT	OUTLINE MEDIANS IN YELLOW
TURN LANE MARKINGS	6 (150) LINE; FULL SIZE LETTERS & SYMBOLS (8' (2.4m))	SOLID	WHITE	SEE TYPICAL TURN LANE MARKING DETAIL
TWO WAY LEFT TURN MARKING	2 @ 4 (100) EACH DIRECTION 8' (2.4m) LEFT ARROW	SKIP-DASH AND SOLID IN PAIRS	YELLOW WHITE	10' (3 m) LINE WITH 30' (9 m) SPACE FOR SKIP-DASH; 5 1/2 (140) C-C BETWEEN SOLID LINE AND SKIP-DASH LINE SEE TYPICAL TWO-WAY LEFT TURN MARKING DETAIL
CROSSWALK LINES (PEDESTRIAN) A. DIAGONALS (BIKE & EQUESTRIAN) B. LONGITUDINAL BARS (SCHOOL)	2 @ 6 (150) 12 (300) @ 45° 12 (300) @ 90°	SOLID SOLID SOLID	WHITE WHITE WHITE	NOT LESS THAN 6' (1.8 m) APART 2' (600) APART 2' (600) APART SEE TYPICAL CROSSWALK MARKING DETAILS.
STOP LINES	24 (600)	SOLID	WHITE	PLACE 4' (1.2 m) IN ADVANCE OF AND PARALLEL TO CROSSWALK, IF PRESENT. OTHERWISE, PLACE AT DESIRED STOPPING POINT. PARALLEL TO CROSSROAD CENTERLINE, WHERE POSSIBLE
PAINTED MEDIANS	2 @ 4 (100) WITH 12 (300) DIAGONALS @ 45° NO DIAGONALS USED FOR 4' (1.2 m) WIDE MEDIANS	SOLID	YELLOW: TWO WAY TRAFFIC WHITE: ONE WAY TRAFFIC	11 (280) C-C FOR THE DOUBLE LINE SEE TYPICAL PAINTED MEDIAN MARKING.
GORE MARKING AND CHANNELIZING LINES	8 (200) WITH 12 (300) DIAGONALS @ 45°	SOLID	WHITE	DIAGONALS: 15' (4.5 m) C-C (LESS THAN 30MPH (50 km/h)) 20' (6 m) C-C 30MPH (50 km/h) TO 45MPH (70 km/h) 30' (9 m) C-C (OVER 45MPH (70 km/h))
RAILROAD CROSSING	24 (600) TRANSVERSE LINES; "RR" IS 6' (1.8 m) LETTERS; 16 (400) LINE FOR "X"	SOLID	WHITE	SEE STATE STANDARD 780001 AREA OF: "R"=3.6 SQ. FT. (0.33 m ² EACH "X"=54.0 SQ. FT. (5.0 m ²)
SHOULDER DIAGONALS (REQUIRED FOR SHOULDERS > 8')	12 (300) @ 45°	SOLID	WHITE - RIGHT YELLOW - LEFT	50' (15 m) C-C (LESS THAN 30MPH (50 km/h)) 75' (25 m) C-C (30 MPH (50 km/h) TO 45MPH (70 km/h)) 150' (45 m) C-C (OVER 45MPH (70 km/h))
U TURN ARROW	SEE DETAIL	SOLID	WHITE	16.3 SF
2 ARROW COMBINATION LEFT AND U TURN	SEE DETAIL	SOLID	WHITE	30.4 SF

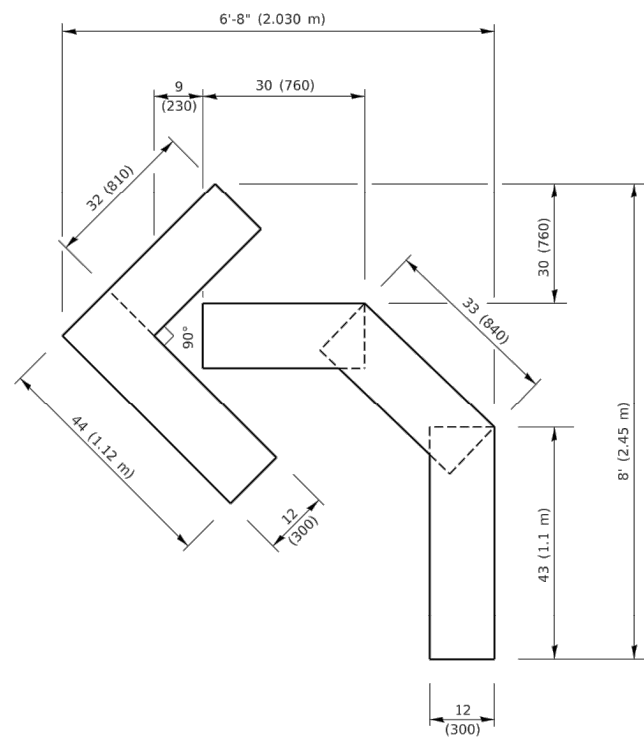
FOR FURTHER DETAILS ON PAVEMENT MARKING REFER TO STANDARD SPECIFICATIONS FOR ROAD AND BRIDGE CONSTRUCTION AND STATE STANDARD 780001.

All dimensions are in inches (millimeters) unless otherwise shown.

FILE NAME = 16R0300-DTLS-01 - TC13	USER NAME = footem	DESIGNED -- EVERS	REVISED -- C. JUCIUS 09-09-09
		CHECKED --	REVISED -- C. JUCIUS 07-01-13
	PLOT SCALE = 50.0000' / in.	DRAWN --	REVISED -- C. JUCIUS 12-21-15
	PLOT DATE = 3/4/2019	CHECKED -- 03-19-90	REVISED -- C. JUCIUS 04-12-16

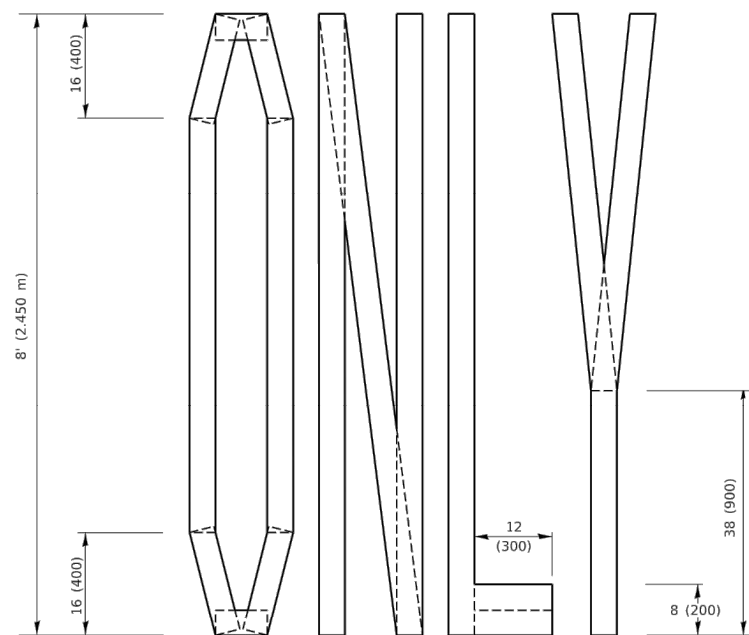
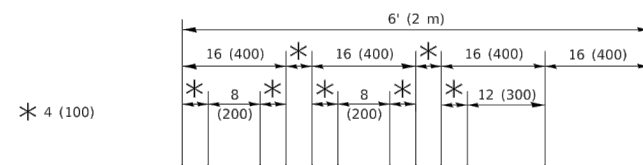
STATE OF ILLINOIS
DEPARTMENT OF TRANSPORTATION

DISTRICT ONE		F.A.U. RTE.	SECTION	COUNTY	TOTAL SHEETS	SHEET NO.
TYPICAL PAVEMENT MARKINGS		5430	22-00073-00-RS	WILL	24	21
SCALE: NONE		SHEET NO. 21 OF 24 SHEETS		STA. TO STA.	CONTRACT NO. 61H76	
		FED. ROAD DIST. NO. 1	ILLINOIS	FED. AID PROJECT	G9H9(536)	



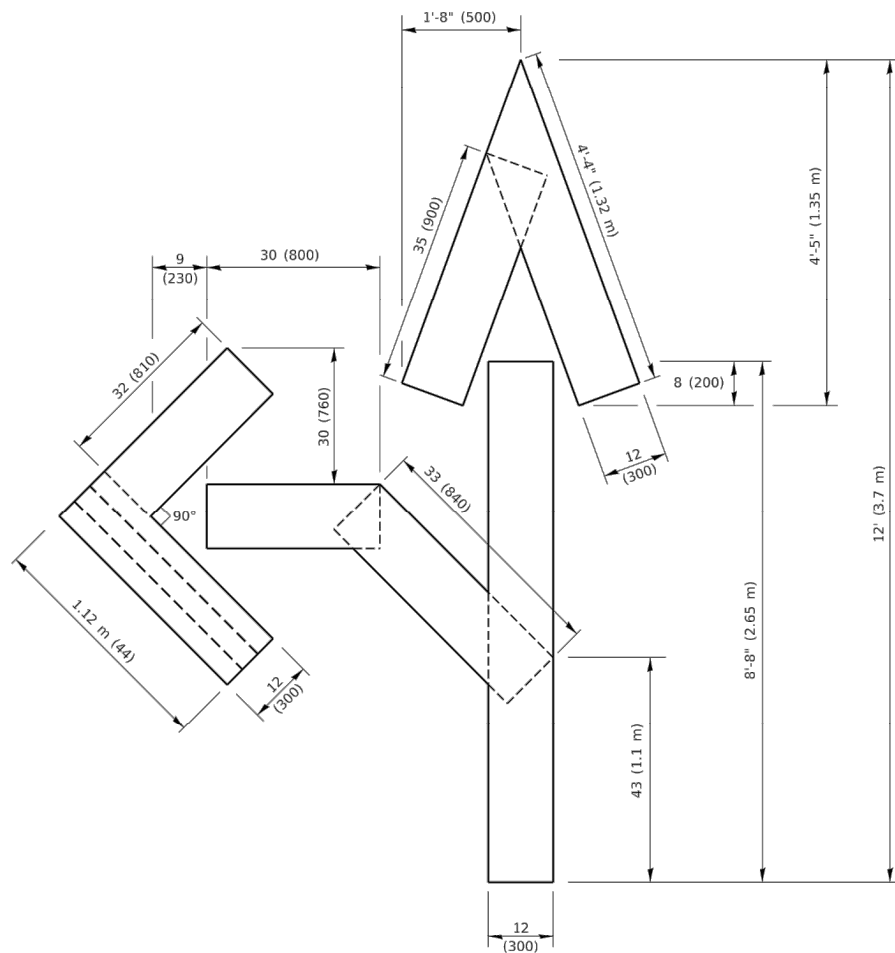
QUANTITY

4 (100) LINE = 45.5 ft. (13.9 m)
15.2 sq. ft. (1.41 sq. m)



QUANTITY

4 (100) LINE = 64.1 ft. (19.5 m)
21.4 sq. ft. (1.99 sq. m)

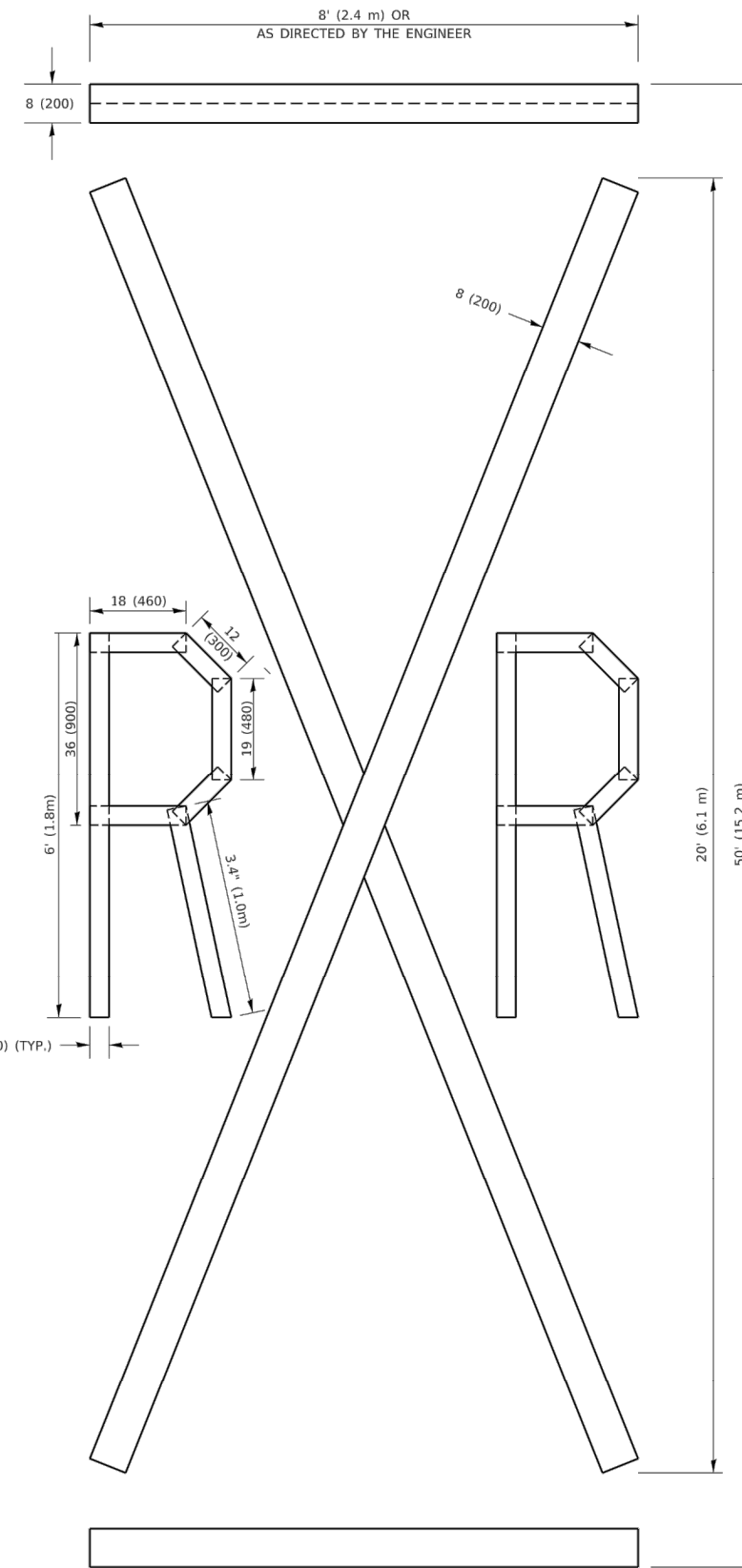


QUANTITY

4 (100) LINE = 82.5 ft. (25.1 m)
27.5 sq. ft. (2.53 sq. m)

NOTE:

ALL QUANTITIES OF PLACEMENT ARE REPRESENTED IN LINEAR FEET OF 4" LINES TO MATCH THE 4" TEMPORARY TAPE PAY ITEM AND REPRESENTS THE TOTAL QUANTITY OF 4" TAPE REQUIRED.



QUANTITY

4 (100) LINE = 225.9 ft. (68.9 m)
75.3 sq. ft. (6.99 sq. m)

All dimensions are in inches (millimeters) unless otherwise shown.

FILE NAME = 16R0300-DTLS-01 - TC16

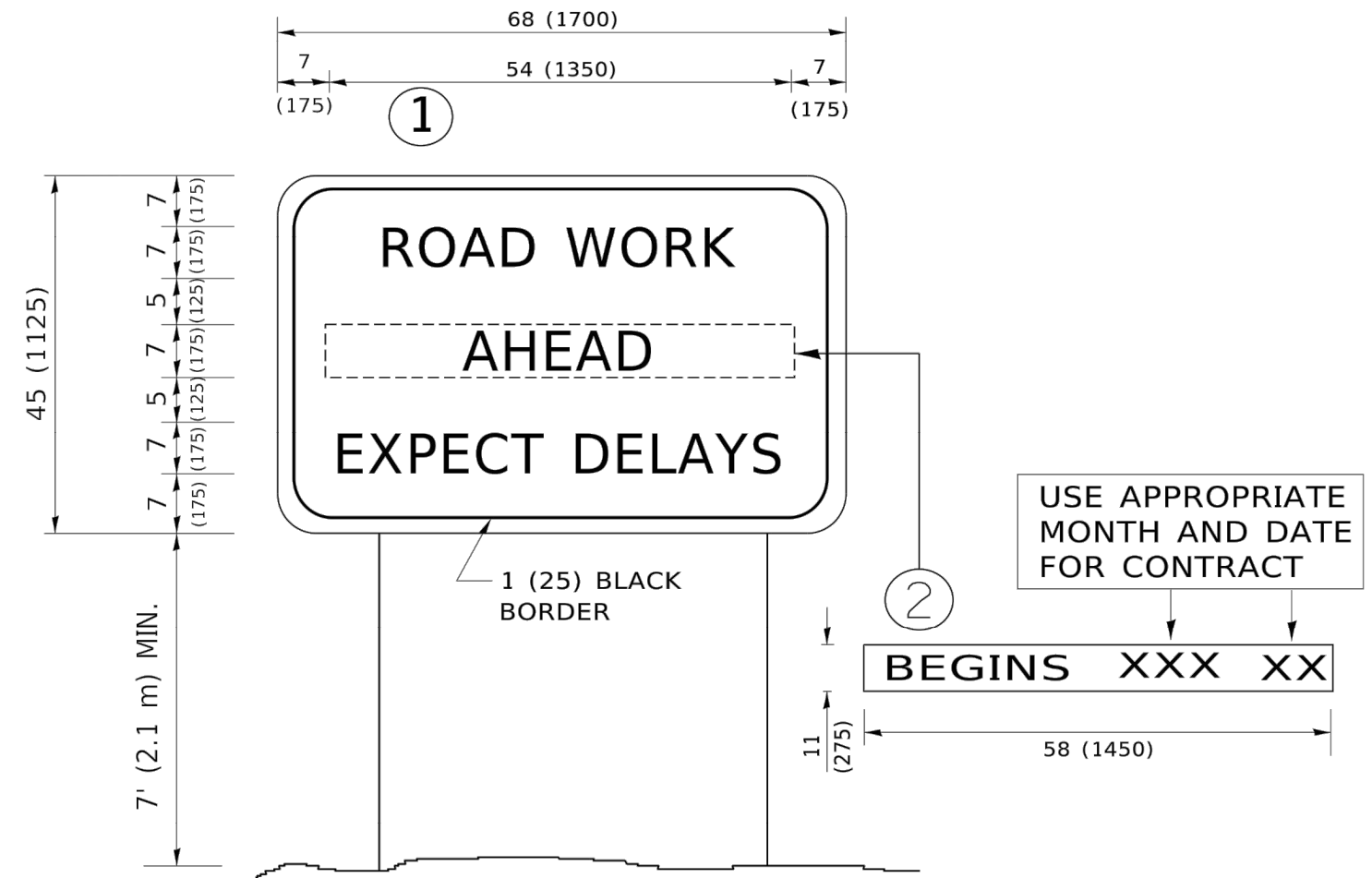
USER NAME = footemj	DESIGNED --	REVISED --T. RAMMACHER 03-02-98
	CHECKED --	REVISED --E. GOMEZ 08-28-00
PLOT SCALE = .50:0068' / in.	DRAWN --	REVISED --E. GOMEZ 08-28-00
PLOT DATE = 3/4/2019	CHECKED -- 09-18-94	REVISED --A. SCHUETZE 09-15-16

STATE OF ILLINOIS
DEPARTMENT OF TRANSPORTATION

SHORT TERM PAVEMENT MARKING LETTERS AND SYMBOLS

SCALE: NONE SHEET NO. 22 OF 24 SHEETS STA. TO STA.

F.A.U. RTE.	SECTION	COUNTY	TOTAL SHEETS	SHEET NO.
5430	22-00073-00-RS	WILL	24	22
TC-16		CONTRACT NO. 61H76		
FED. ROAD DIST. NO. 1 ILLINOIS FED. AID PROJECT G9H9(536)				



NOTES:

1. USE BLACK LETTERING ON ORANGE BACKGROUND.
2. ERECT SIGNS IN ADVANCE OF THE LOCATION FOR THE "ROAD CONSTRUCTION AHEAD" SIGN AT LOCATIONS AS DIRECTED BY THE ENGINEER.
3. ERECT SIGN ① WITH INSTALLED PANEL ② ONE WEEK PRIOR TO THE START OF CONSTRUCTION.
4. REMOVE PANEL ② SOON AFTER THE START OF CONSTRUCTION.
5. SEE SPECIAL PROVISION FOR "TEMPORARY INFORMATION SIGNING" FOR ADDITIONAL INFORMATION.
6. ONE SIGN ASSEMBLY EQUALS 25.70 SQ. FT. (2.3 SQ. M.)
7. SHALL BE PAID FOR AS TEMPORARY INFORMATION SIGNING.

ALL DIMENSIONS ARE IN INCHES (MILLIMETERS) UNLESS OTHERWISE SHOWN.

FILE NAME = 16R0300-DTLS-01 - TC22	USER NAME = foolemj	DESIGNED --	REVISED --T. RAMMACHER 03-02-98
		CHECKED --	REVISED --E. GOMEZ 08-28-00
	PLOT SCALE = 50.0068' / in.	DRAWN --	REVISED --E. GOMEZ 08-28-00
	PLOT DATE = 3/4/2019	CHECKED -- 09-18-94	REVISED --A. SCHUETZE 09-15-16

STATE OF ILLINOIS
DEPARTMENT OF TRANSPORTATION

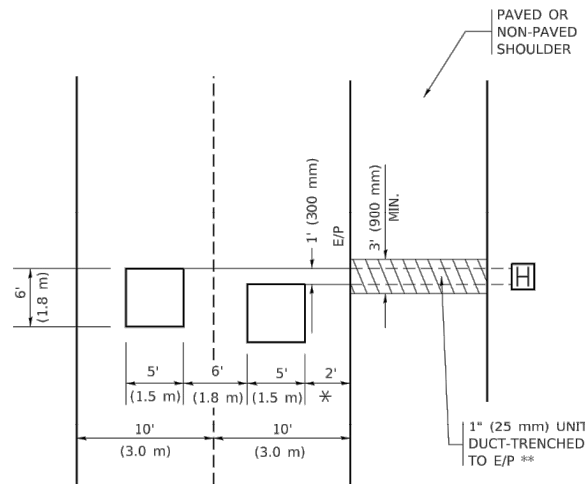
ARTERIAL ROAD
INFORMATION SIGN

SCALE: NONE SHEET NO. 23 OF 24 SHEETS STA. TO STA.

F.A.U. RTE.	SECTION	COUNTY	TOTAL SHEETS	SHEET NO.
5430	22-00073-00-RS	WILL	24	23
TC-22		CONTRACT NO. 61H76		
FED. ROAD DIST. NO. 1	ILLINOIS	FED. AID PROJECT G9H9(536)		

LOOPS NEXT TO SHOULDERS

PROVIDE A PAVEMENT REPLACEMENT NOTE WHICH SHOULD EQUAL 3' (900 mm) X WIDTH OF PAVED SHOULDER.

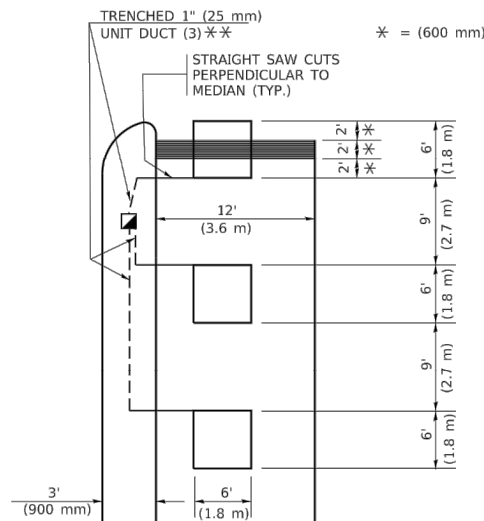


* = (600 mm)

** UNIT DUCT IS TO BE SHOWN ON PLAN SHEETS BUT SHALL NOT BE INCLUDED IN THE PAY ITEMS.

LEFT TURN LANES WITH MEDIANS
VOLUME DENSITY ("FAR OUT" DETECTION)
ON SAME APPROACH
(PROTECTED / PERMITTED LEFT TURN PHASING)

HANDHOLE LOCATION MAY VARY DEPENDING ON GEOMETRICS AND DESIGN OF TRAFFIC SIGNALS. HEAVY-DUTY HANDHOLES TO BE USED WHEN THE MEDIAN IS MOUNTABLE. REFER TO STANDARD 814001 TO ENSURE THAT HANDHOLE FITS IN MEDIAN.

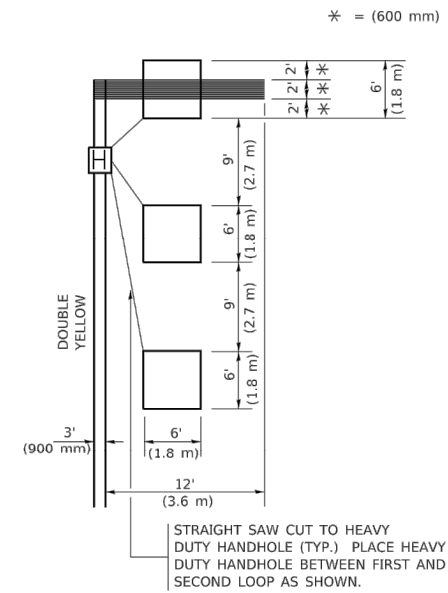


* = (600 mm)

** UNIT DUCT IS TO BE SHOWN ON PLAN SHEETS BUT SHALL NOT BE INCLUDED IN THE PAY ITEMS.

NOTE: DUAL LEFT TURNS NOT SHOWN REFER TO PLAN SHEET FOR DETECTOR LOOP REPLACEMENT

LEFT TURN LANES WITHOUT MEDIANS
VOLUME DENSITY ("FAR OUT" DETECTION)
ON SAME APPROACH
(PROTECTED / PERMITTED LEFT TURN PHASING)



* = (600 mm)

NOTE: DUAL LEFT TURNS NOT SHOWN REFER TO PLAN SHEET FOR DETECTOR LOOP REPLACEMENT

NOTES:

VEHICLES LOOP DETECTORS

- * ALL LEAD IN CABLE SHALL BE TWO CONDUCTOR NO. 14 TWISTED, SHIELDED.
- * EACH DETECTOR LOOP SHALL HAVE ITS OWN SAW CUT FROM THE LOOP TO THE EDGE OF PAVEMENT OR TO A HANDHOLE IN THE PAVEMENT.
- * EACH DETECTOR LOOP SHALL HAVE ITS OWN ONE INCH (25 mm) UNIT DUCT BETWEEN THE EDGE OF PAVEMENT AND THE FIRST HANDHOLE OR JUNCTION BOX. EACH UNIT DUCT RUN SHALL BE SHOWN ON THE PLANS BY THE DESIGNER, BUT SHALL NOT BE PAID FOR SEPARATLY. THIS ITEM IS INCIDENTAL TO THE PAY ITEM FOR DETECTOR LOOPS.
- * ONE DIMENSION OF ALL DETECTOR LOOPS SHALL BE SIX FEET (1.8 m)
- * EACH LANE OF NON-LOCKING, PRESENCE DETECTION AND EACH LANE OF A DOUBLE LEFT TURN LANE REQUIRES A SEPARATE INDUCTIVE LOOP DETECTOR AND LEAD IN CABLE.
- * WHEN NON-LOCKING, PRESENCE DETECTION IS USED, MORE THAN ONE LOOP PER LANE IS REQUIRED BEHIND THE STOP BAR (i.e. 1-1/2, 1-3/4, 2).
- * WHEN SYSTEM LOOPS ARE REQUIRED ON AN APPROACH OF AN INTERSECTION, THE LOOPS USED FOR VOLUME DENSITY AND INTERSECTION TIMING SHALL ALSO BE USED AS SYSTEM DETECTORS. EACH ONE OF THESE TYPE OF LOOPS REQUIRES A SEPARATE TWO CONDUCTOR NO. 14 TWISTED SHIELDED CABLE AND A SEPARATE INDUCTIVE LOOP DETECTOR WHEN NEW CONTROLLERS ARE UTILIZED. THE DESIGNER SHALL LABEL THESE TYPES OF LOOPS AS "INTERSECTION AND SAMPLING (SYSTEM) DETECTORS" ON THE SIGNAL LAYOUT, THE INTERCONNECT PLAN AND THE SYSTEM CABLE PLAN. WHEN AN EXISTING CONTROLLER IS UTILIZED FOR THIS TYPE OF DETECTION, THE PAY ITEM "INDUCTIVE LOOP DETECTOR WITH SYSTEM OUTPUT" SHOULD BE USED.

PLACEMENT OF DETECTORS

THE FOLLOWING FIGURES REPRESENT THE MOST COMMON DETECTOR LOOP LOCATIONS AND SIZES. ADJUSTMENTS WILL BE NECESSARY FOR SPECIFIC GEOMETRIC CONSIDERATIONS.

LOCATIONS AND DEMENSIONS OF DETECTOR LOOPS ARE REQUIRED ON ALL SIGNAL LAYOUT PLAN SHEETS.

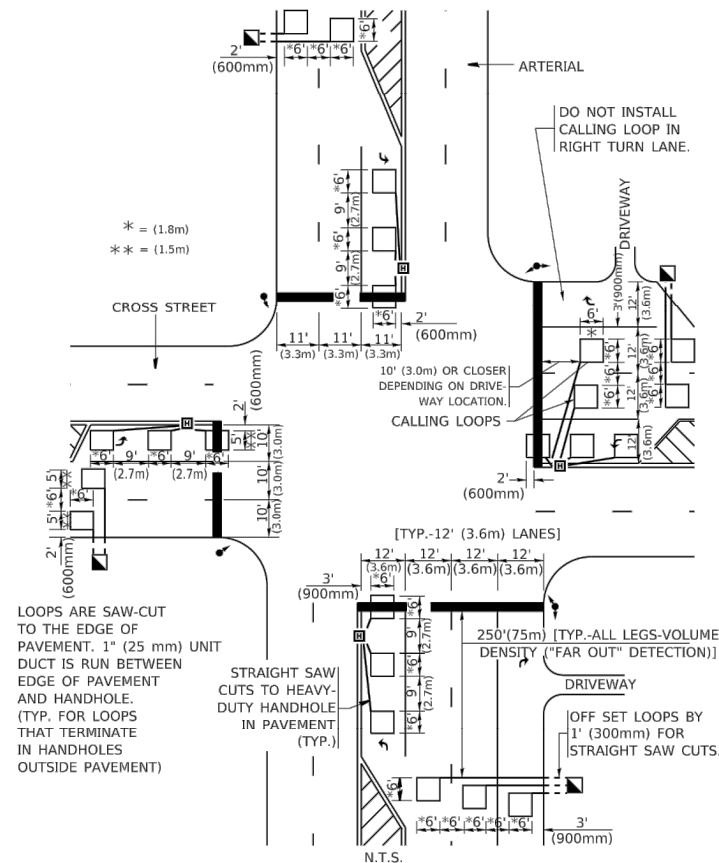
"FAR OUT" DETECTION REFERS TO LOCKING, PRESENCE TYPE DETECTION LOCATED IN THRU LANES, RIGHT TURN LANES, AND RIGHT TURN LANE TAPER AREAS (IF APPLICABLE), USUALLY 250' (75 m) IN ADVANCE OF STOP BARS. "UPTIGHT" DETECTION REFERS TO NON-LOCKING PRESENCE TYPE DETECTION LOCATED IN ALL LANES AND 10'-15' (3.0 m-4.5 m) BEHIND THE CROSSING STREET'S EDGE OF PAVEMENT EXTENDED.

NOTE:

ALL DETAILS AND NOTES SHOWN ARE FROM THE I.D.O.T. DISTRICT 1 TRAFFIC SIGNAL DESIGN GUIDELINES DATED JANUARY 1995

THIS DRAWING HAS BEEN PREPARED TO ASSIST THE RESIDENT ENGINEER FOR ALL ROADWAY RESURFACING OR S.M.A.R.T. PROJECTS WHERE THE DIMENSIONS ARE NOT SHOWN ON THE PLANS AND THE FINAL LOCATIONS FOR CROSSWALKS OR STOP BARS ARE NOT DETERMINED.

ARTERIAL-VOLUME DENSITY ("FAR OUT" DETECTION)
CROSS STREET-NON VOLUME DENSITY ("FAR OUT" DETECTION)



* = (1.8m)
 ** = (1.5m)

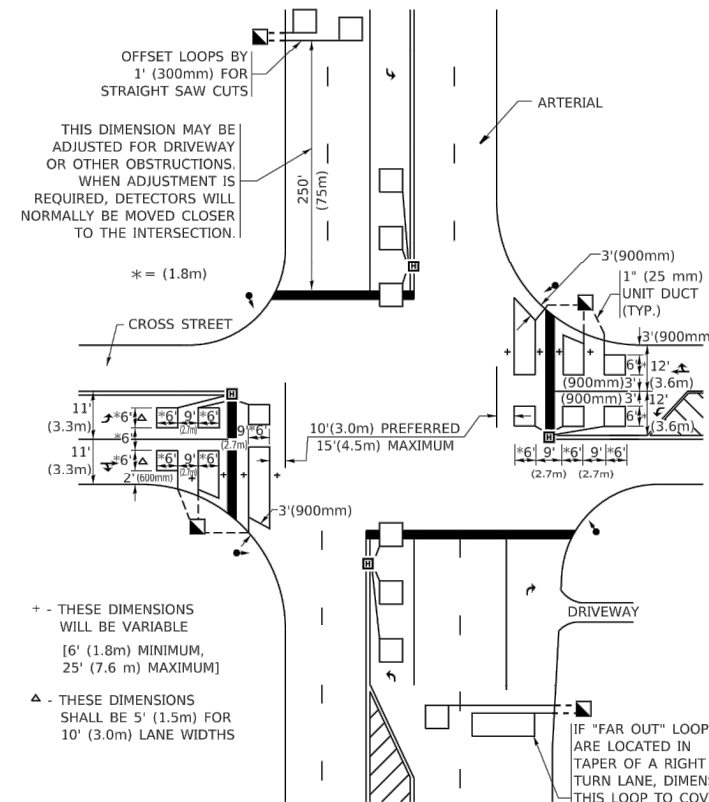
LOOPS ARE SAW-CUT TO THE EDGE OF PAVEMENT. 1" (25 mm) UNIT DUCT IS RUN BETWEEN EDGE OF PAVEMENT AND HANDHOLE. (TYP. FOR LOOPS THAT TERMINATE IN HANDHOLES OUTSIDE PAVEMENT)

STRAIGHT SAW CUTS TO HEAVY-DUTY HANDHOLE IN PAVEMENT (TYP.)

[TYP.-12' (3.6m) LANES]
 250' (75m) [TYP.-ALL LEGS-VOLUME DENSITY ("FAR OUT" DETECTION)]
 DRIVEWAY
 OFF SET LOOPS BY 1' (300mm) FOR STRAIGHT SAW CUTS.

DETAIL 1
 N.T.S.

ARTERIAL-VOLUME DENSITY ("FAR OUT" DETECTION)
CROSS STREET-NON VOLUME DENSITY ("UPTIGHT" PRESENCE DETECTION)



THIS DIMENSION MAY BE ADJUSTED FOR DRIVEWAY OR OTHER OBSTRUCTIONS. WHEN ADJUSTMENT IS REQUIRED, DETECTORS WILL NORMALLY BE MOVED CLOSER TO THE INTERSECTION.

* = (1.8m)

+ - THESE DIMENSIONS WILL BE VARIABLE
 6' (1.8m) MINIMUM,
 25' (7.6 m) MAXIMUM

Δ - THESE DIMENSIONS SHALL BE 5' (1.5m) FOR 10' (3.0m) LANE WIDTHS

IF "FAR OUT" LOOPS ARE LOCATED IN TAPER OF A RIGHT TURN LANE, DIMENSION THIS LOOP TO COVER TAPER AREA. DO NOT COVER THE LEFT TURN LANE OR LEFT TURN LANE TAPER.

DETAIL 2
 N.T.S.

FILE NAME = 16R0300-DTLS-01 - TS07

USER NAME = footemj	DESIGNED --	REVISED --
	CHECKED --	REVISED --
PLOT SCALE = + 50.0000" / in.	DRAWN --	REVISED --
PLOT DATE = + 3/4/2019	CHECKED --	REVISED --

STATE OF ILLINOIS
 DEPARTMENT OF TRANSPORTATION

DISTRICT 1 - DETECTOR LOOP INSTALLATION
 DETAILS FOR ROADWAY RESURFACING

SCALE: NONE SHEET NO. 24 OF 24 SHEETS STA. TO STA.

F.A.U. RTE.	SECTION	COUNTY	TOTAL SHEETS	SHEET NO.
5430	22-00073-00-RS	WILL	24	24
TS-07		CONTRACT NO. 61H76		
FED. ROAD DIST. NO. 1	ILLINOIS	FED. AID PROJECT	G9H9(536)	