



UNDERGROUND FACILITIES, STRUCTURES AND UTILITIES HAVE BEEN PLOTTED FROM AVAILABLE SURVEYS AND RECORDS AND THEIR LOCATIONS MUST BE CONSIDERED APPROXIMATE ONLY. THERE MAY BE OTHERS, THE EXISTENCE OF WHICH IS PRESENTLY NOT KNOWN. THE DEPTH OF UTILITIES IS ASSUMED TO BE NORMAL AND CUSTOMARY. THE CONTRACTOR SHALL VERIFY LOCATION AND DEPTH OF ALL UTILITIES PRIOR TO CONSTRUCTION.

STATE OF ILLINOIS
DEPARTMENT OF TRANSPORTATION

**PROPOSED
HIGHWAY PLANS**

**ROUTE FAS 659 (COUNTY HIGHWAY 8)
SECTION 19-00077-00-PV
PROJECT 9NLP(490)
PAVEMENT BASE STABILIZATION
MOULTRIE COUNTY**

C-97-075-22

F.A.S. RTE.	SECTION	COUNTY	TOTAL SHEETS	SHEET NO.
659	19-00077-00-PV	MOULTRIE	11	1
		ILLINOIS	CONTRACT NO. 95921	

INDEX OF SHEETS

- 1 COVER SHEET
- 2 GENERAL NOTES AND SUMMARY OF QUANTITIES
- 3 TYPICAL SECTIONS
- 4-7 COUNTY HIGHWAY 8 PLAN VIEWS
- 8-9 INTERSECTION DETAILS
- 10-11 INTERSECTION PROFILES

HIGHWAY STANDARDS

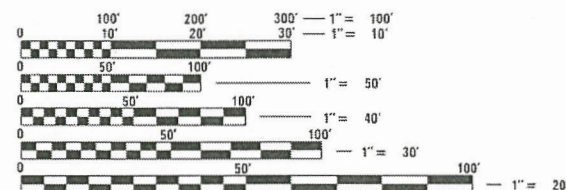
- 000001-08 STANDARD SYMBOLS, ABBREVIATIONS AND PATTERNS
- 001006 DECIMAL OF AN INCH AND OF A FOOT
- 280001-07 TEMPORARY EROSION CONTROL SYSTEMS
- 701901-08 TRAFFIC CONTROL DEVICES
- BLR 21-9 TYPICAL APPLICATION OF TRAFFIC CONTROL DEVICES FOR CONSTRUCTION ON RURAL LOCAL HIGHWAYS
- BLR 22-7 TYPICAL APPLICATION OF TRAFFIC CONTROL DEVICES FOR CONSTRUCTION ON RURAL LOCAL HIGHWAYS (TWO-LANE TWO WAY RURAL TRAFFIC) (ROAD CLOSED TO THRU TRAFFIC)

TRAFFIC DATA

COUNTY HIGHWAY 8
DESIGN ADT: 800
DESIGN SPEED: 50 MPH

FUNCTIONAL CLASSIFICATION

MAJOR COLLECTOR

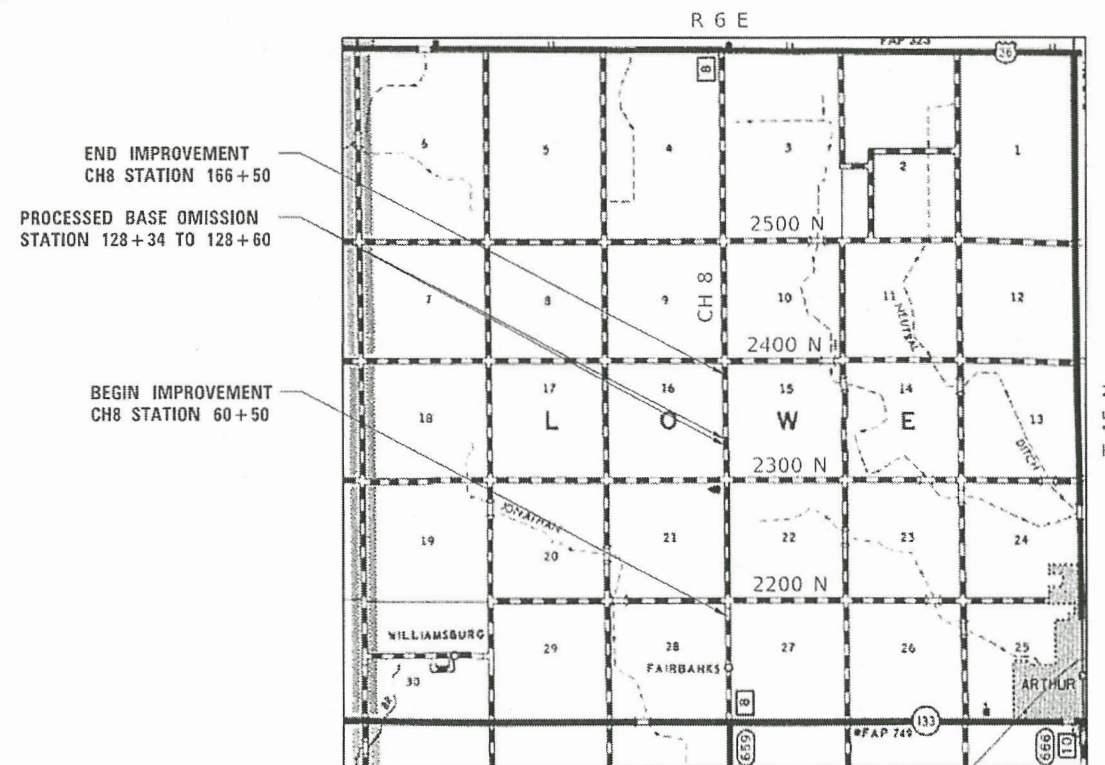
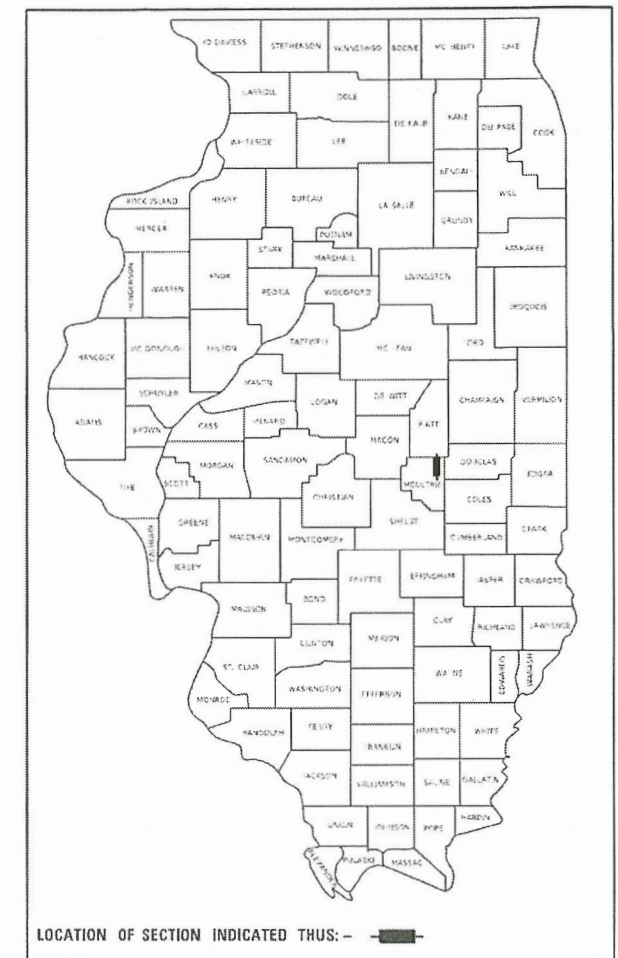


FULL SIZE PLANS HAVE BEEN PREPARED USING STANDARD ENGINEERING SCALES. REDUCED SIZED PLANS WILL NOT CONFORM TO STANDARD SCALES. IN MAKING MEASUREMENTS ON REDUCED PLANS, THE ABOVE SCALES MAY BE USED.

CHASTAIN & ASSOCIATES LLC
CONSULTING ENGINEERS

DECATUR, IL
ROCKFORD, IL
BENTON, IL
BELOIT, WI
(833) 424-2782

SCHAUMBURG, IL
CHAMPAIGN, IL
LAFAYETTE, IN
PADUCAH, KY
184-001397



GROSS LENGTH = 10,600.00 FT. = 2.008 MILE
NET LENGTH = 10,574.00 FT. = 2.002 MILE



COREY M. FRANZEN, P.E.
LICENSE EXPIRES 11/30/23
DATE 4/1/2022

STATE OF ILLINOIS
DEPARTMENT OF TRANSPORTATION
DIVISION OF HIGHWAYS

APPROVED 4/18/2022
Jeffrey Birel
COUNTY ENGINEER

PASSED 04/21/22
Scott White
DISTRICT 7 ENGINEER OF LOCAL ROADS AND STREETS

RELEASED FOR BID BASED ON LIMITED REVIEW 04/21/22
Jeffrey Meyers/BW
REGION 4 ENGINEER

**PRINTED BY THE AUTHORITY
OF THE STATE OF ILLINOIS**

GENERAL NOTES

- THE PROJECT SHALL BE CONSTRUCTED IN ACCORDANCE WITH THE PLANS, THE STANDARD SPECIFICATIONS FOR ROAD AND BRIDGE CONSTRUCTION, ADOPTED JANUARY 1, 2022 (SSRB); THE SUPPLEMENTAL SPECIFICATIONS AND RECURRING SPECIAL PROVISIONS INDICATED ON THE CHECK SHEET; AND THE SPECIAL PROVISIONS.
- IT SHALL BE THE RESPONSIBILITY OF THE CONTRACTOR TO DETERMINE EXACT UTILITY LOCATIONS FROM THE UTILITY COMPANY AND BY FIELD INSPECTION. THE CONTRACTOR IS REQUIRED TO CONTACT J.U.L.I.E. AT 1-800-892-0123 OR 811 PRIOR TO PROCEEDING WITH ANY WORK ON THE PROJECT.
- HORIZONTAL CONTROL AND BEARINGS ARE BASED ON THE ILLINOIS COORDINATE SYSTEM, EAST ZONE, NORTH AMERICAN DATUM OF 1983(NAD 83), ADJUSTMENT OF 2011.
- ALL ELEVATIONS ARE BASED ON NORTH AMERICAN VERTICAL DATUM OF 1988(NAVD 88). THE PROPOSED GRADE ELEVATIONS SHOWN ON THE PLANS ARE THE ELEVATIONS FOR THE FINISHED SURFACE AT THE LOCATIONS INDICATED.
- DIMENSIONS FOR THE RADII SHOWN ON THE PLAN SHEETS ARE TO THE EDGE OF PAVEMENT UNLESS OTHERWISE NOTED.
- THE CONTRACTOR SHALL NOTIFY THE RESIDENT ENGINEER AND THE COUNTY ENGINEER 72 HOURS IN ADVANCE OF CONSTRUCTION WORK.
- IT IS THE CONTRACTORS RESPONSIBILITY TO VERIFY ALL DIMENSIONS AND EXISTING FIELD CONDITIONS PRIOR TO CONSTRUCTION AND ORDERING MATERIALS. THE CONTRACTOR SHALL NOTIFY THE ENGINEER OF ALL DISCREPANCIES AND COOPERATE TO RESOLVE DIFFERENCES BETWEEN THE EXISTING FIELD CONDITIONS AND THE PLANS. SPECIAL ATTENTION IS CALLED TO ARTICLE 105.06.
- UNLESS OTHERWISE NOTED, EXISTING CULVERTS ARE TO REMAIN. CARE SHALL BE TAKEN SUCH THAT EXISTING CULVERTS ARE NOT DAMAGED DURING PULVERIZATION AND BASE PROCESSING. A GAP IN THE PROCESSED BASE MAY BE REQUIRED AT LOCATIONS WHERE CULVERTS HAVE LIMITED COVER. DEPTH OF COVER SHALL NOT BE REDUCED.

THE FOLLOWING RATES OF APPLICATION HAVE BEEN USED IN CALCULATING PLAN QUANTITIES:

AGGREGATE MATERIALS	-	1.8 TON/CU YD
SEAL COAT AGGREGATE	-	25 LB/SQ YD
COVER COAT AGGREGATE	-	25 LB/SQ YD
BITUMINOUS MATERIALS (PRIME COAT)	-	0.40 GAL/SQ YD
BITUMINOUS MATERIALS (COVER AND SEAL COATS)	-	0.40 GAL/SQ YD
APPROXIMATE BIT. MATERIAL WEIGHT CONVERSION	-	252 GAL/TON
RATE OF CEMENT APPLICATION FOR PROCESSING MODIFIED SOIL	-	10% BY DRY UNIT WEIGHT

CEMENT PROCESSED MODIFIED SOIL

THE CEMENT-PROCESSED MODIFIED SOIL BASE SHALL ATTAIN A MINIMUM COMPRESSIVE STRENGTH OF 300 PSI.

THE 10% CEMENT APPLICATION RATE SPECIFIED FOR THE PROCESSED MODIFIED SOIL IS ESTIMATED BASED ON LIMITED SAMPLING OF THE MATERIALS AND PRELIMINARY MIX DESIGNS. THE FINAL MIX DESIGN PROPORTIONING SHALL BE DETERMINED BY THE CONTRACTOR TO MEET THE STRENGTH REQUIREMENTS. PRELIMINARY SAMPLING AND MIX DESIGN INFORMATION IS AVAILABLE FROM THE OFFICE OF THE COUNTY ENGINEER UPON REQUEST.

PRIOR TO BEGINNING THE PROCESSING OPERATION, THE CONTRACTOR SHALL PERFORM SAW CUTS TRANSVERSE TO THE ROADWAY AT ALL PROJECT TERMINI TO ESTABLISH THE LIMITS OF PROCESSING. SEAL COAT OF THE CLASS A3 SURFACE SHALL BLEND INTO THE EXISTING PAVEMENT BEYOND THE SAW CUT AT EACH LOCATION. THESE SAW CUTS WILL NOT BE PAID FOR SEPARATELY, BUT WILL BE INCLUDED IN THE COST OF PROCESSING MODIFIED SOIL 14".

THE BASE MATERIALS (INCLUDING OIL AND CHIP SURFACES), AND SUBGRADE MATERIAL SHALL BE SCARIFIED, PULVERIZED, AND THOROUGHLY MIXED TOGETHER TO THE DEPTH OF CEMENT STABILIZATION INDICATED IN THE PLANS PRIOR TO BEING SHAPED TO THE PROPER GRADE AS SPECIFIED IN SECTION 302 AND PRIOR TO FURNISHING AND APPLYING THE CEMENT.

THE FINISHED CROSS SLOPE DURING PRE-PULVERIZATION PROCESSING SHALL BE WITHIN -0.5% TO +1.0% OF THE PROPOSED FINAL CROSS SLOPE. THIS DOES NOT ALLEVIATE THE CONTRACTOR FROM MEETING FINAL CROSS SLOPE REQUIREMENTS INDICATED IN THE PLANS.

FINAL TRIMMING OF THE CEMENT-STABILIZED BASE TO RECEIVE A CLASS A3 SURFACE IS NOT REQUIRED IF THE CONTRACTOR DISPLAYS THE ABILITY TO CONSTRUCT AN ACCEPTABLE SURFACE, CROWN, CROSS SLOPE, AND PROFILE DURING THE CEMENT STABILIZATION PROCESS. IF THESE RESULTS CANNOT BE ACHIEVED, FINAL TRIMMING WILL BE REQUIRED TO THE LINES AND GRADES SHOWN ON THE PLANS AND ON THE TYPICAL SECTIONS. ALL TRIMMED MATERIAL SHALL BE SWEEPED AND CLEANED FROM THE BASE COURSE AND DEPOSITED OUTSIDE OF THE SHOULDERS AS PART OF THE AGGREGATE WEDGE CONSTRUCTION.

FINAL DETERMINATION OF THE NECESSITY OF TRIMMING OF CEMENT STABILIZATION SHALL BE THE RESPONSIBILITY OF THE ENGINEER.

PLACEMENT OF THE CLASS A3 SURFACE SHALL NOT OCCUR UNTIL THE CEMENT-STABILIZED BASE HAS REACHED THE REQUIRED 7 DAY COMPRESSIVE STRENGTH OR HAS OTHERWISE BEEN ALLOWED SUFFICIENT TIME TO CURE AS DIRECTED BY THE ENGINEER. THE CEMENT STABILIZED BASE SURFACE SHALL BE CLEAN PRIOR TO THE APPLICATION OF THE CLASS A3 SURFACE.

SUMMARY OF QUANTITIES

CODE NO.	ITEM	UNIT	TOTAL QUANTITY	CONSTR. CODE	
				ROADWAY 0006	RURAL
20400800	FURNISHED EXCAVATION	CU YD	150	150	
25000300	SEEDING, CLASS 3	ACRE	0.5	0.5	
25100630	EROSION CONTROL BLANKET	SQ YD	1513	1513	
28000400	PERIMETER EROSION BARRIER	FOOT	2824	2824	
30200750	PROCESSING MODIFIED SOIL 14"	SQ YD	29296	29296	
30201700	PORTLAND CEMENT	TON	1769	1769	
40200800	AGGREGATE SURFACE COURSE, TYPE B	TON	17	17	
48101200	AGGREGATE SHOULDERS, TYPE B	TON	698	698	
48102100	AGGREGATE WEDGE SHOULDER, TYPE B	TON	83	83	
67100100	MOBILIZATION	L SUM	1	1	
LR400015	ADD ROCK	SQ YD	3792	3792	
LR403200	BITUMINOUS MATERIALS (PRIME COAT)	TON	43	43	
LR403300	SURFACE PROFILE MILLING	SQ YD	29296	29296	
LR403400	BITUMINOUS MATERIALS (COVER AND SEAL COATS)	TON	129	129	
LR403500	COVER COAT AGGREGATE	TON	675	675	
LR403600	SEAL COAT AGGREGATE	TON	338	338	
XX009289	TRAFFIC CONTROL AND PROTECTION, STANDARD BLR 21	L SUM	1	1	

HORIZONTAL CONTROL						
CP	NORTHING	EASTING	ELEVATION	DISCRIPTION	STATION	OFFSET
3	1,121,706.4530	929,107.5900	683.58	1/2 IP PINK CP CAP	143+55.99	23.84 LT
4	1,116,284.6050	929,128.6250	676.88	1/2 IP PINK TRAV CAP	89+34.06	25.05 LT
5	1,110,041.7960	929,191.0380	674.77	1/2 IP PINK TRAV CAP	26+91.18	20.81 RT

VERTICAL CONTROL						
BM	NORTHING	EASTING	ELEVATION	DISCRIPTION	STATION	OFFSET
102	1,124,310.2250	929,151.3850	680.57	RR SPIKE VERTICAL CONTROL IN POWER POLE SE CORNER OF CH 8 AND 2400N	169+59.58	30.77 RT
103	1,118,967.4890	929,187.2110	678.82	RR SPIKE VERTICAL CONTROL IN POWER POLE SE CORNER OF CH 8 AND 2300N	116+16.55	49.56 RT
104	1,113,660.9170	929,139.4540	675.55	RR SPIKE VERTICAL CONTROL IN POWER POLE SW CORNER OF CH 8 AND 2200N	63+10.32	26.85 LT

PROPOSED BASELINE CONTROL POINTS CH8

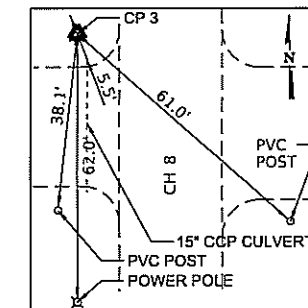
POT	N 1,111,040.082618	E 929,174.922280	STA 36+89.38
COURSE FROM POT TO PI N 0° 10' 51.9" W DIST 1,321.919839			
PI	N 1,112,361.995854	E 929,170.744173	STA 50+11.30
COURSE FROM PI TO PI N 0° 11' 44.4" W DIST 1,321.920946			
PI	N 1,113,683.909091	E 929,166.229535	STA 63+33.22
COURSE FROM PI TO PI N 0° 17' 22.5" W DIST 1,327.818644			
PI	N 1,115,011.710776	E 929,159.518555	STA 76+61.04
COURSE FROM PI TO PI N 0° 15' 47.1" W DIST 1,327.815682			
PI	N 1,116,339.512461	E 929,153.421695	STA 89+88.85
COURSE FROM PI TO PI N 0° 18' 56.5" W DIST 1,327.821842			
PI	N 1,117,667.314146	E 929,146.105302	STA 103+16.67
COURSE FROM PI TO PI N 0° 22' 20.7" W DIST 1,327.829735			
PI	N 1,118,995.115831	E 929,137.474508	STA 116+44.50
COURSE FROM PI TO PI N 0° 09' 24.1" W DIST 667.488000			
PI	N 1,119,662.601335	E 929,135.649163	STA 123+11.99
COURSE FROM PI TO PI N 0° 03' 06.6" W DIST 667.485777			
PI	N 1,120,330.086839	E 929,135.045203	STA 129+79.48
COURSE FROM PI TO PI N 0° 08' 39.9" W DIST 1,334.975249			
PI	N 1,121,665.057848	E 929,131.680169	STA 143+14.45
COURSE FROM PI TO PI N 0° 20' 35.5" W DIST 1,334.994958			
PI	N 1,123,000.028856	E 929,123.683660	STA 156+49.45
COURSE FROM PI TO PI N 0° 08' 02.5" W DIST 1,334.974660			
PI	N 1,124,334.999864	E 929,120.561177	STA 169+84.42
COURSE FROM PI TO POT N 0° 00' 21.1" W DIST 1,341.343135			
POT	N 1,125,676.342992	E 929,120.423744	STA 183+25.77

PROPOSED BASELINE CONTROL POINTS 2200N

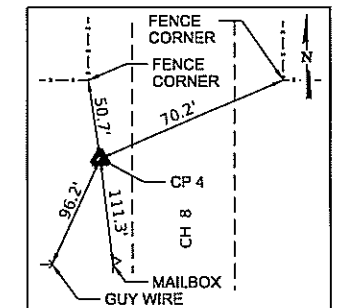
POT	N 1,113,685.148139	E 928,930.569985	STA 500+00.00
COURSE FROM POT TO POT S 89° 41' 55.5" E DIST 600.000050			
POT	N 1,113,681.993508	E 929,530.561741	STA 506+00.00

PROPOSED BASELINE CONTROL POINTS 2300N

POT	N 1,118,997.438385	E 928,883.825658	STA 600+00.00
COURSE FROM POT TO POT S 89° 28' 31.4" E DIST 550.000028			
POT	N 1,118,992.402482	E 929,433.802631	STA 605+50.00



CP3 NOT TO SCALE



CP4 NOT TO SCALE

FILE NAME: I:\Municipalities\Moultrie County\2027 CH 8 Improvements\CD00\CD00.Civil\2027 skh02.genoa.dgn

USER NAME = rkaecher	DESIGNED - CMF	REVISED -
DRAWN - RLK	CHECKED - CMF	REVISED -
PLLOT SCALE = 40.0000' / 1" =	CHECKED - CMF	REVISED -
PLLOT DATE = 4/12/2022	DATE = 2/9/2022	REVISED -

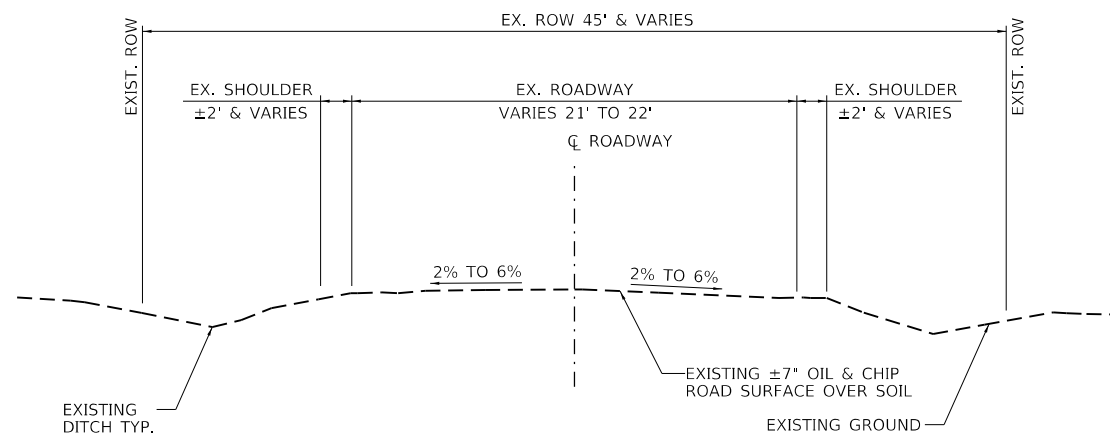
CHASTAIN & ASSOCIATES LLC
CONSULTING ENGINEERS

DECATUR, IL SCHAUMBURG, IL
ROCKFORD, IL CHAMPAIGN, IL
BENTON, IL LAFAYETTE, IN
 PADUCAH, KY
(833) 424-2782 184-001397

GENERAL NOTES & SUMMARY OF QUANTITIES
COUNTY HIGHWAY 8 ROADWAY IMPROVEMENTS - MOULTRIE COUNTY

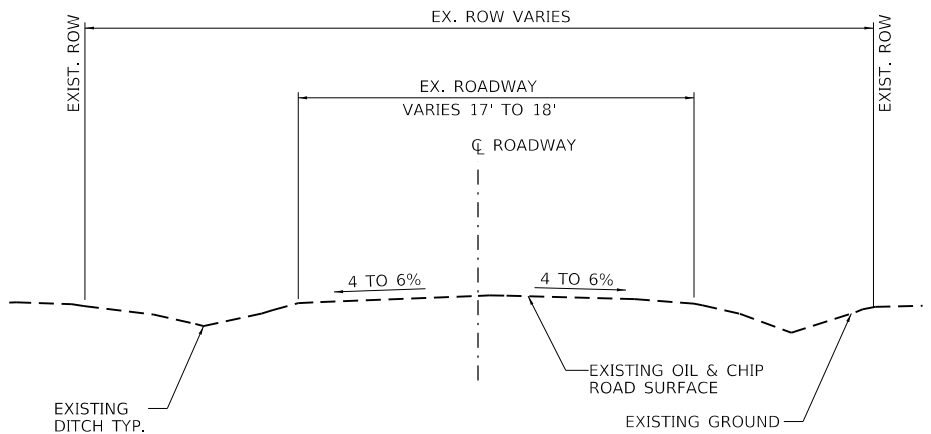
SCALE: SHEET NO. OF SHEETS STA. TO STA.

F.A.S. RTE.	SECTION	COUNTY	TOTAL SHEETS	SHEET NO.
659	19-00077-00-PV	MOULTRIE	11	2
CONTRACT NO. 95921				
ILLINOIS FED. AID PROJECT				



EXISTING TYPICAL SECTION

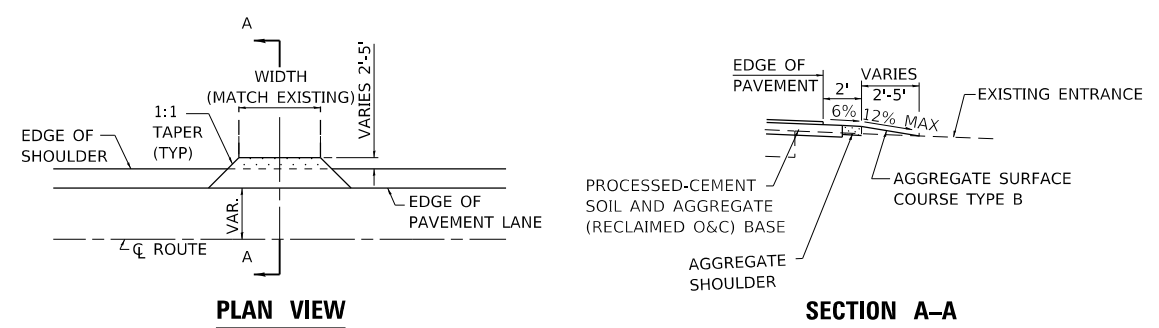
COUNTY HIGHWAY 8
60+50.00 to 166+50.00



EXISTING TYPICAL SECTION

2200N
501+15.00 to 503+55.00

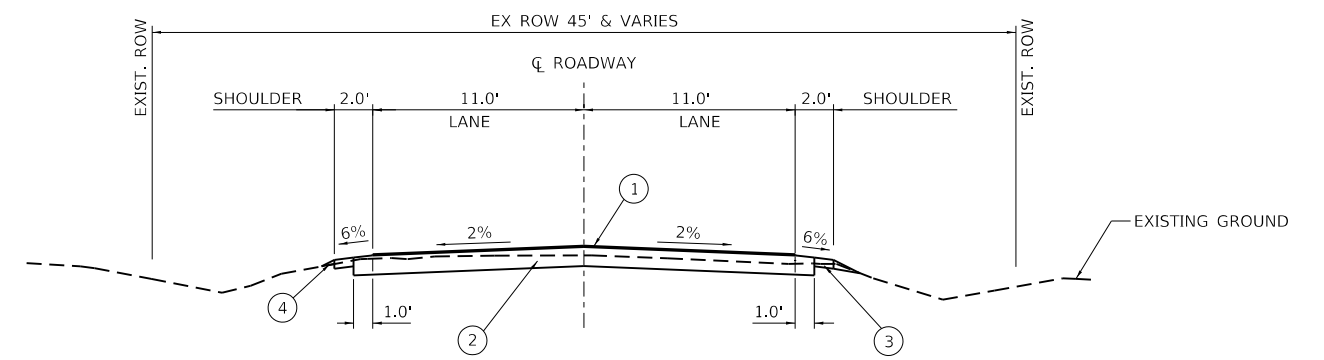
2300N
601+30.00 to 603+80.00



PLAN VIEW

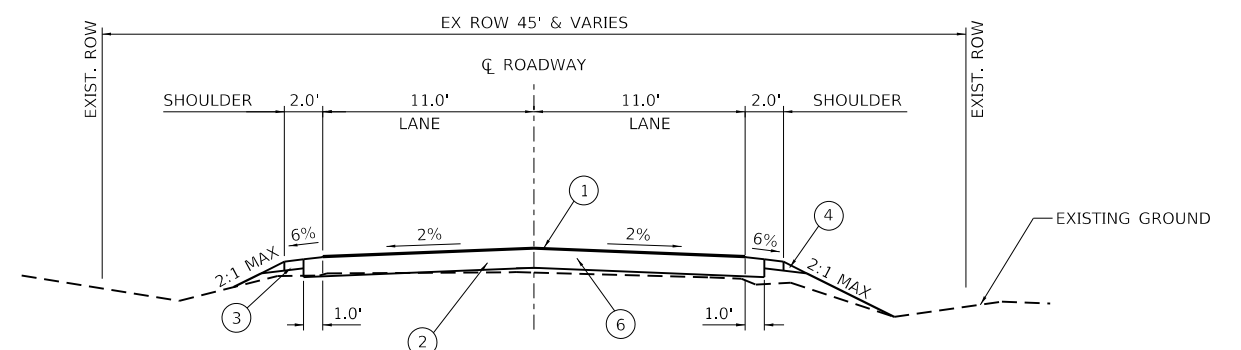
SECTION A-A

AGGREGATE ENTRANCE



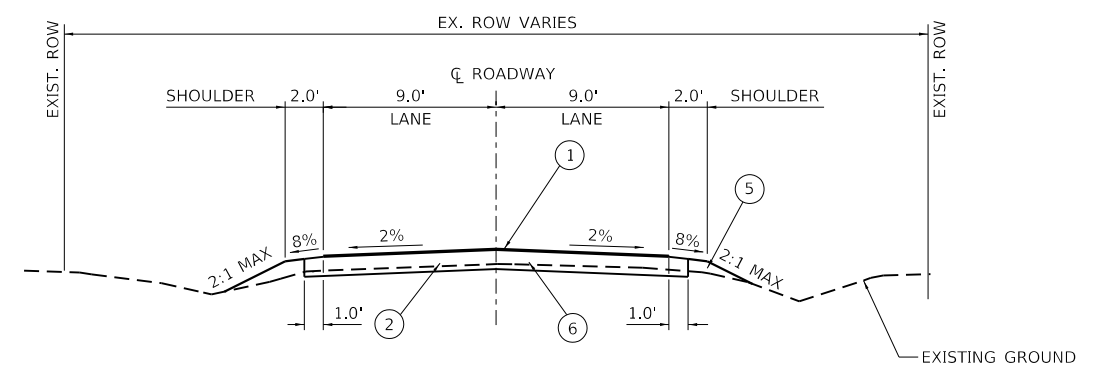
PROPOSED TYPICAL SECTION

COUNTY HIGHWAY 8
60+50.00 to 60+95.00
66+20.00 to 113+65.00
118+50.00 to 166+50.00



PROPOSED TYPICAL SECTION

COUNTY HIGHWAY 8
60+95.00 to 66+20.00
113+65.00 to 118+50.00



PROPOSED TYPICAL SECTION

2200N
501+15.00 to 503+55.00
2300N
601+30.00 to 603+80.00

- ① CLASS A3 BIT. SURFACE TREATMENT
- ② 14" PROCESSED-CEMENT SOIL AND AGGREGATE (RECLAIMED O&C) BASE
- ③ 6" AGGREGATE SHOULDER, TYPE B
- ④ AGGREGATE WEDGE
- ⑤ TURF SHOULDER
- ⑥ ADD ROCK TO BLEND WITH MODIFIED SOIL FOR PROCESSING TO BRING ELEVATION TO GRADE

FILE NAME = I:\Municipalities\Moultrie County\8207 CH 8 Improvements\CADD\CADD\Civil\8207_ah03_typical.dgn

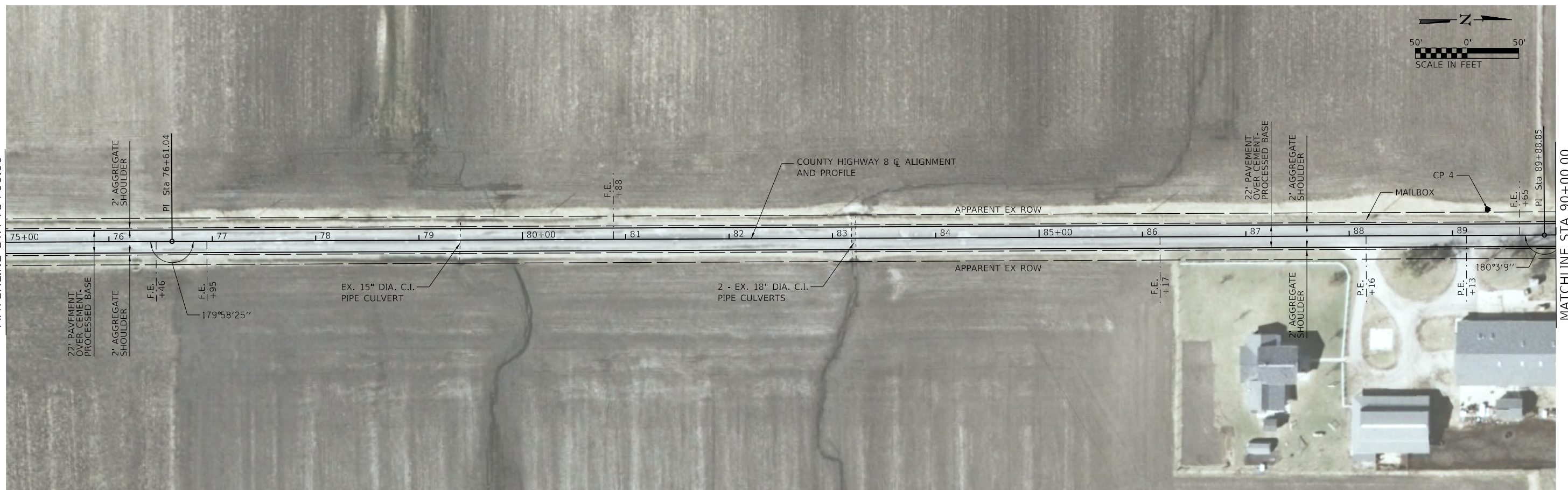
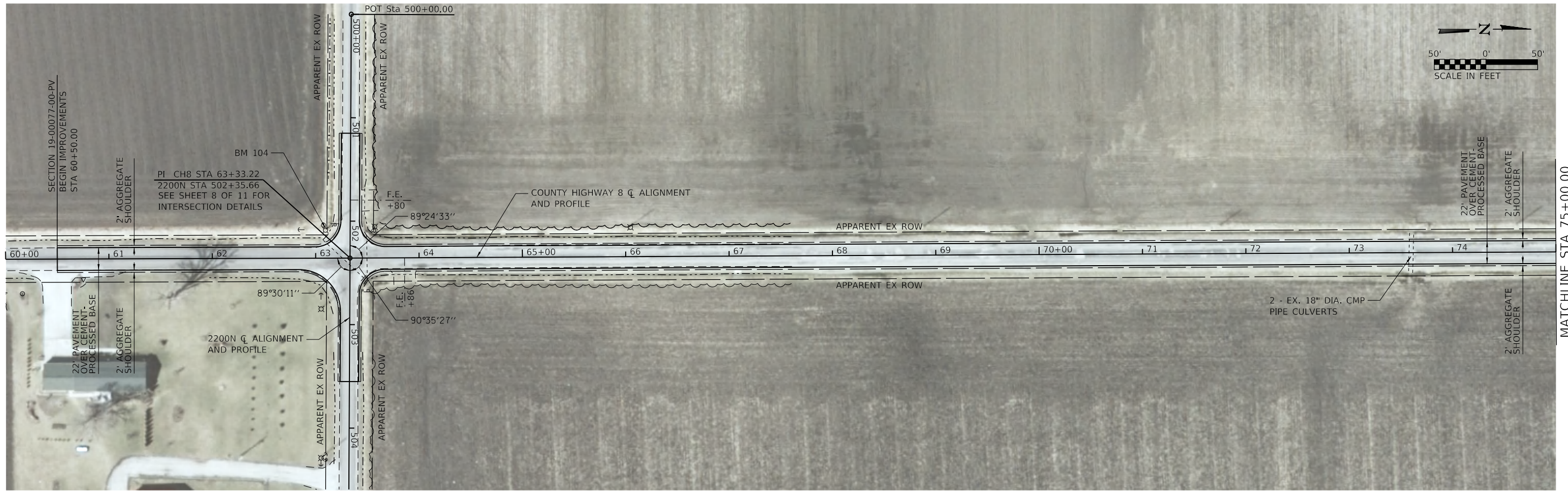
USER NAME = rkocher	DESIGNED - CMF	REVISED -
PLOT SCALE = 40,0000' / in.	DRAWN - RLK	REVISED -
PLOT DATE = 4/11/2022	CHECKED - CMF	REVISED -
	DATE - 2/9/2022	REVISED -

CHASTAIN & ASSOCIATES LLC
CONSULTING ENGINEERS

DECATUR, IL SCHAUMBURG, IL
ROCKFORD, IL CHAMPAIGN, IL
BENTON, IL LAFAYETTE, IN
 PADUCAH, KY
(833) 424-2782 184-001397

TYPICAL SECTIONS			
COUNTY HIGHWAY 8 ROADWAY IMPROVEMENTS - MOULTRIE COUNTY			
SCALE:	SHEET NO.	OF SHEETS	STA. TO STA.

F.A.S. RTE.	SECTION	COUNTY	TOTAL SHEETS	SHEET NO.
659	19-00077-00-PV	MOULTRIE	11	3
CONTRACT NO. 95921				
ILLINOIS FED. AID PROJECT				



NOTE: ENTRANCES SHOWN ARE APPROXIMATE AND MAY NOT BE SHOWN AT ALL LOCATIONS

FILE NAME = I:\Municipalities\Moultrie County\8207 CH 8 Improvements\CADD\CADD_Civil\8207_ah04_ch8_pla.dgn

USER NAME = rkocher	DESIGNED - CMF	REVISED -
PLOT SCALE = 100.0000' / in.	DRAWN - RLK	REVISED -
PLOT DATE = 4/11/2022	CHECKED - CMF	REVISED -
	DATE - 2/9/2022	REVISED -

CHASTAIN & ASSOCIATES LLC
CONSULTING ENGINEERS

DECATUR, IL SCHAUMBURG, IL
ROCKFORD, IL CHAMPAIGN, IL
BENTON, IL LAFAYETTE, IN
 PADUCAH, KY
(833) 424-2782 184-001397

COUNTY HIGHWAY 8 PLAN
COUNTY HIGHWAY 8 ROADWAY IMPROVEMENTS - MOULTRIE COUNTY

SCALE: SHEET NO. 1 OF 4 SHEETS STA. 60+50.00 TO STA. 90+00.00

F.A.S. RTE.	SECTION	COUNTY	TOTAL SHEETS	SHEET NO.
659	19-00077-00-PV	MOULTRIE	11	4
CONTRACT NO. 95921			ILLINOIS FED. AID PROJECT	

FILE NAME = I:\Municipalities\Moultrie County\8207 CH 8 Improvements\CADD\CADD_Civil\8207_ah05_ch8_plan02.dgn



NOTE: ENTRANCES SHOWN ARE APPROXIMATE AND MAY NOT BE SHOWN AT ALL LOCATIONS

USER NAME = rkocher	DESIGNED - CMF	REVISED -
	DRAWN - RLK	REVISED -
PLOT SCALE = 100.0000' / in.	CHECKED - CMF	REVISED -
PLOT DATE = 4/11/2022	DATE - 2/9/2022	REVISED -

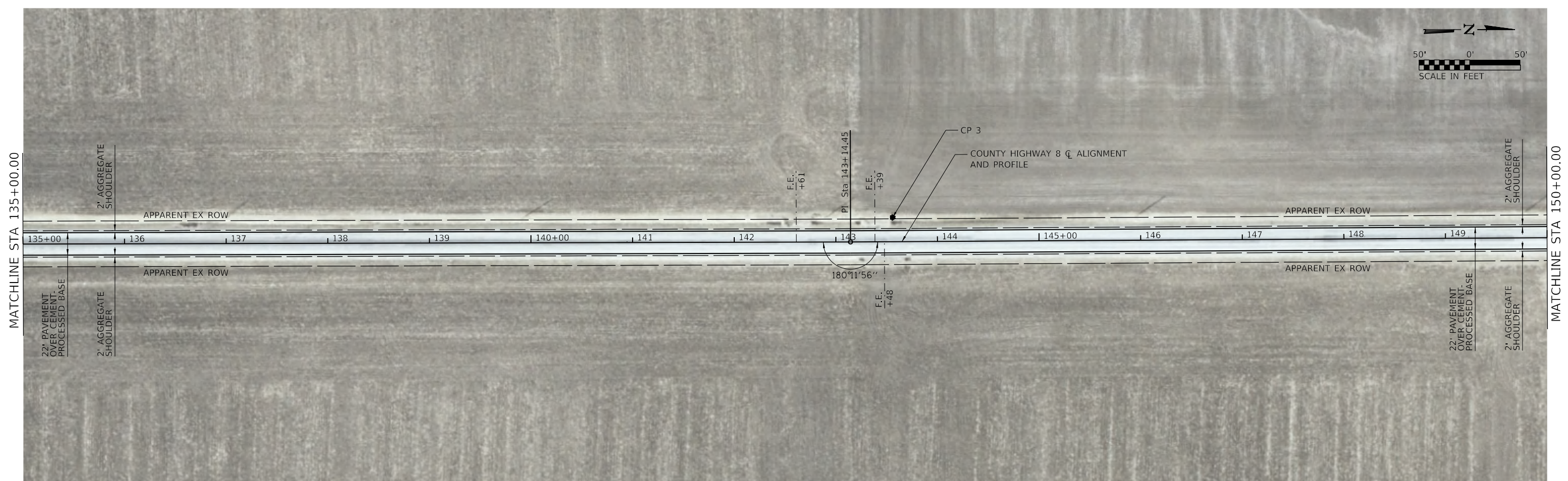
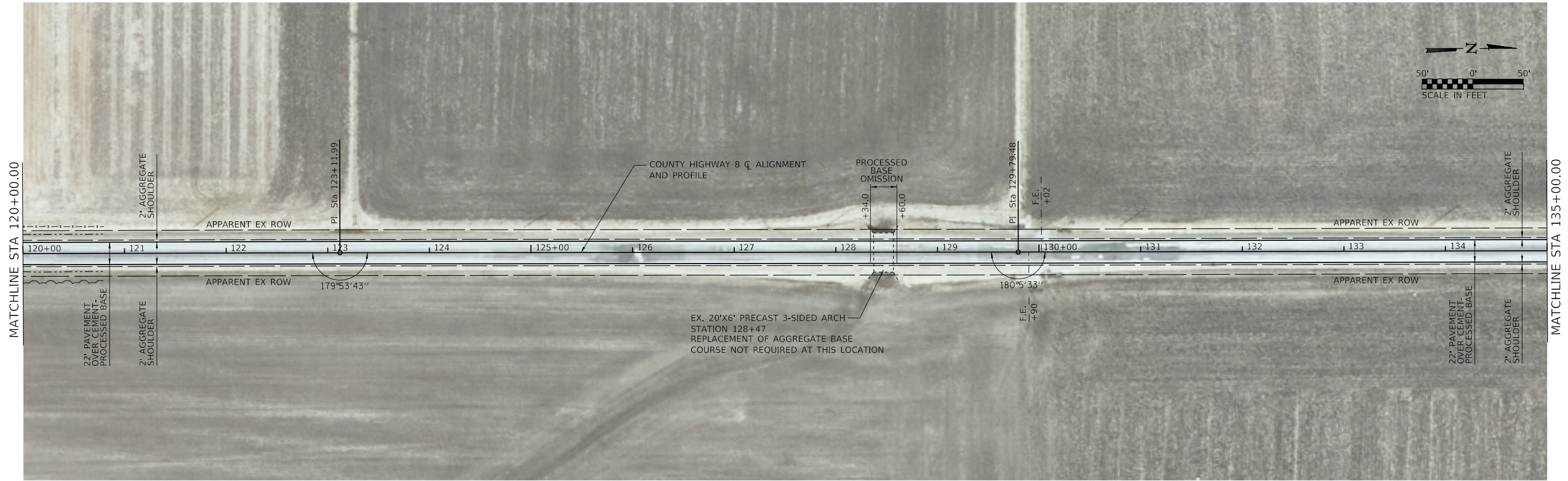
CHASTAIN & ASSOCIATES LLC
CONSULTING ENGINEERS

DECATUR, IL SCHAUMBURG, IL
ROCKFORD, IL CHAMPAIGN, IL
BENTON, IL LAFAYETTE, IN
 PADUCAH, KY
(833) 424-2782 184-001397

COUNTY HIGHWAY 8 PLAN
COUNTY HIGHWAY 8 ROADWAY IMPROVEMENTS - MOULTRIE COUNTY
SCALE: SHEET NO. 2 OF 4 SHEETS STA. 90+00.00 TO STA. 120+00.00

F.A.S. RTÉ.	SECTION	COUNTY	TOTAL SHEETS	SHEET NO.
659	19-00077-00-PV	MOULTRIE	11	5
CONTRACT NO. 95921				
ILLINOIS FED. AID PROJECT				

FILE NAME = I:\Municipalities\Moultrie County\8207 CH 8 Improvements\CADD\CADD\Civil\8207_ah06_ch8_pla03.dgn



NOTE: ENTRANCES SHOWN ARE APPROXIMATE AND MAY NOT BE SHOWN AT ALL LOCATIONS

USER NAME = rkocher	DESIGNED - CMF	REVISED -
DRAWN - RLK	REVISIED -	
PLOT SCALE = 100.0000' / in.	CHECKED - CMF	REVISED -
PLOT DATE = 4/11/2022	DATE - 2/9/2022	REVISED -

CHASTAIN & ASSOCIATES LLC
CONSULTING ENGINEERS

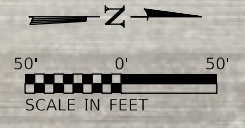
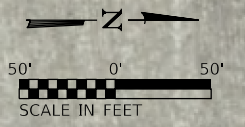
DECATUR, IL SCHAUMBURG, IL
ROCKFORD, IL CHAMPAIGN, IL
BENTON, IL LAFAYETTE, IN
 PADUCAH, KY
(833) 424-2782 184-001397

COUNTY HIGHWAY 8 PLAN
COUNTY HIGHWAY 8 ROADWAY IMPROVEMENTS - MOULTRIE COUNTY

SCALE: SHEET NO. 3 OF 4 SHEETS STA. 120+00.00 TO STA. 150+00.00

F.A.S. RTE. 659	SECTION 19-00077-00-PV	COUNTY MOULTRIE	TOTAL SHEETS 11	SHEET NO. 6
CONTRACT NO. 95921			ILLINOIS FED. AID PROJECT	

FILE NAME = I:\Municipalities\Moultrie County\8207 CH 8 Improvements\CADD\CADD\Civil\8207_ah07_ch8_pla04.dgn



NOTE: ENTRANCES SHOWN ARE APPROXIMATE AND MAY NOT BE SHOWN AT ALL LOCATIONS

USER NAME = rkocher	DESIGNED - CMF	REVISED -
	DRAWN - RLK	REVISED -
PLOT SCALE = 100.0000' / in.	CHECKED - CMF	REVISED -
PLOT DATE = 4/11/2022	DATE - 2/9/2022	REVISED -

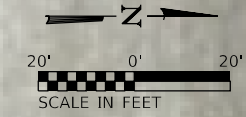
CHASTAIN & ASSOCIATES LLC
CONSULTING ENGINEERS

DECATUR, IL SCHAUMBURG, IL
ROCKFORD, IL CHAMPAIGN, IL
BENTON, IL LAFAYETTE, IN
 PADUCAH, KY
(833) 424-2782 184-001397

COUNTY HIGHWAY 8 PLAN
COUNTY HIGHWAY 8 ROADWAY IMPROVEMENTS – MOULTRIE COUNTY

SCALE: SHEET NO. 4 OF 4 SHEETS STA. 150+00.00 TO STA. 166+50.00

F.A.S. RTE.	SECTION	COUNTY	TOTAL SHEETS	SHEET NO.
659	19-00077-00-PV	MOULTRIE	11	7
CONTRACT NO. 95921				
ILLINOIS FED. AID PROJECT				



FILE NAME = I:\Municipalities\Moultrie County\8207 CH 8 Improvements\CADD\CADD_Civil\8207_ah108_intersec2200N.dgn

USER NAME = rkocher	DESIGNED - CMF	REVISED -
PLOT SCALE = 40.0000' / 1"	DRAWN - RLK	REVISED -
PLOT DATE = 4/11/2022	CHECKED - CMF	REVISED -
	DATE - 2/9/2022	REVISED -

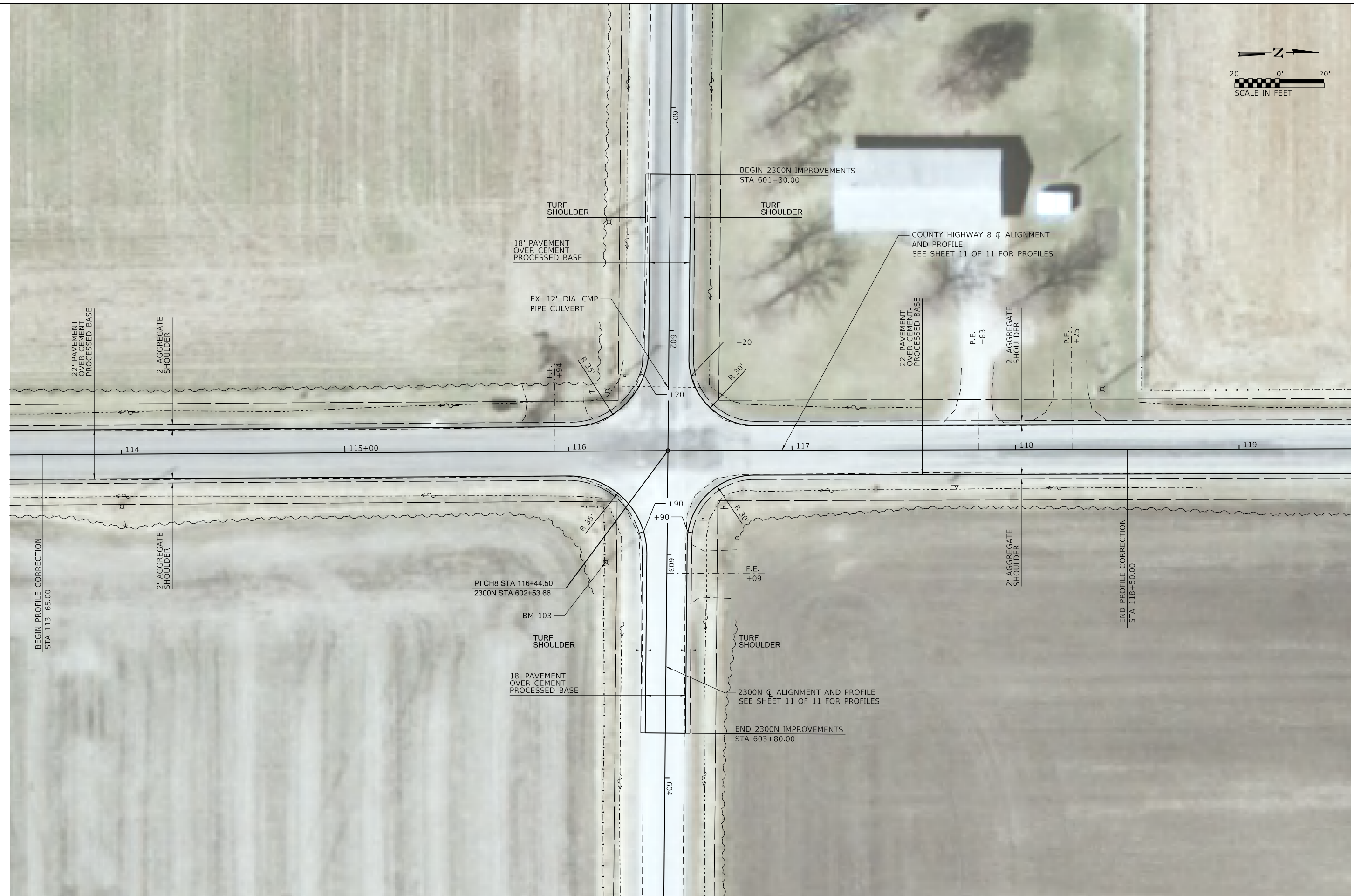
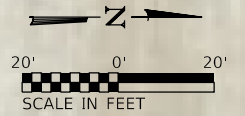
CHASTAIN & ASSOCIATES LLC
CONSULTING ENGINEERS

DECATUR, IL SCHAUMBURG, IL
ROCKFORD, IL CHAMPAIGN, IL
BENTON, IL LAFAYETTE, IN
 PADUCAH, KY
(833) 424-2782 184-001397

CH 8 & 2200N INTERSECTION DETAILS
COUNTY HIGHWAY 8 ROADWAY IMPROVEMENTS - MOULTRIE COUNTY

SCALE: SHEET NO. 1 OF 2 SHEETS STA. TO STA.

F.A.S. RTE.	SECTION	COUNTY	TOTAL SHEETS	SHEET NO.
659	19-00077-00-PV	MOULTRIE	11	8
CONTRACT NO. 95921				
ILLINOIS FED. AID PROJECT				



FILE NAME = I:\Municipalities\Moultrie County\8207 CH 8 Improvements\CADD\CADD\Civil\8207_ah1091_intersec2300N.dgn

USER NAME = rkocher	DESIGNED - CMF	REVISED -
	DRAWN - RLK	REVISED -
PLOT SCALE = 40.0000' / 1"	CHECKED - CMF	REVISED -
PLOT DATE = 4/11/2022	DATE - 2/9/2022	REVISED -

CHASTAIN & ASSOCIATES LLC
CONSULTING ENGINEERS

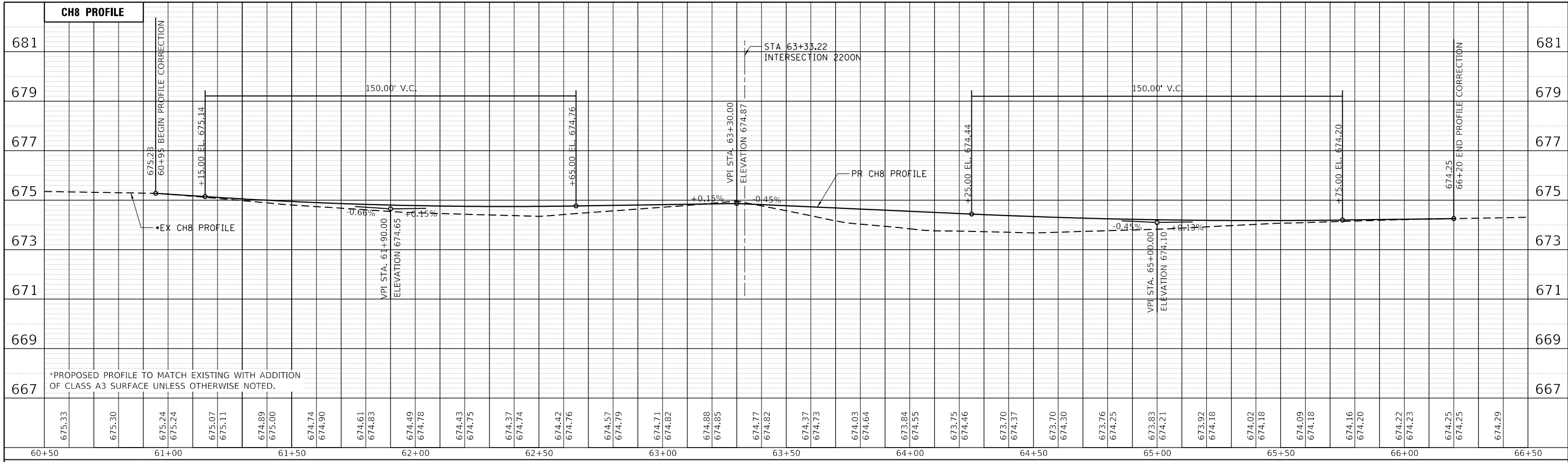
DECATUR, IL SCHAUMBURG, IL
ROCKFORD, IL CHAMPAIGN, IL
BENTON, IL LAFAYETTE, IN
 PADUCAH, KY
(833) 424-2782 184-001397

CH 8 & 2300N INTERSECTION DETAILS
COUNTY HIGHWAY 8 ROADWAY IMPROVEMENTS - MOULTRIE COUNTY

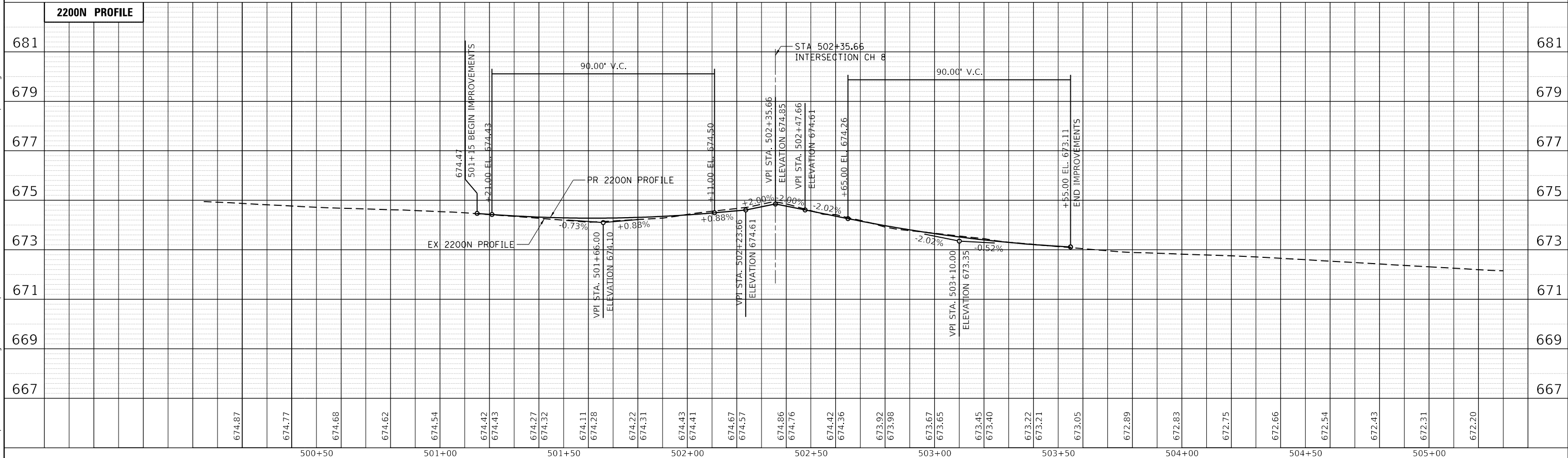
SCALE: SHEET NO. 2 OF 2 SHEETS STA. TO STA.

F.A.S. RTE.	SECTION	COUNTY	TOTAL SHEETS	SHEET NO.
659	19-00077-00-PV	MOULTRIE	11	9
CONTRACT NO. 95921				
ILLINOIS FED. AID PROJECT				

PLAN	SURVEYED	DATE
NOTE BOOK NO.	PLOTTED	BY
	GRADES CHECKED	
	ALIGNMENT CHECKED	
	STRUCTURE NOTATIONS OK'D	
	CADD FILE NAME	



PROFILE	SURVEYED	DATE
NOTE BOOK NO.	PLOTTED	BY
	GRADES CHECKED	
	ALIGNMENT CHECKED	
	STRUCTURE NOTATIONS OK'D	
	CADD FILE NAME	



I:\Municipalities\Moultrie County\8207 Ch 8 Improvements\CADD\CADD\Civil\8207 sk108_intersec2200n_prof11a.dgn

USER NAME = rkoacher	DESIGNED - CMF	REVISED -
	DRAWN - RLK	REVISED -
PLOT SCALE = 40.0000' / in.	CHECKED - CMF	REVISED -
PLOT DATE = 4/11/2022	DATE - 2/10/2022	REVISED -

CHASTAIN & ASSOCIATES LLC
CONSULTING ENGINEERS

DECATUR, IL SCHAUMBURG, IL
ROCKFORD, IL CHAMPAIGN, IL
BENTON, IL LAFAYETTE, IL
 PADUCAH, KY
(833) 424-2782 184-001397

CH8 AND 2200N PROFILES
COUNTY HIGHWAY 8 ROADWAY IMPROVEMENTS - MOULTRIE COUNTY

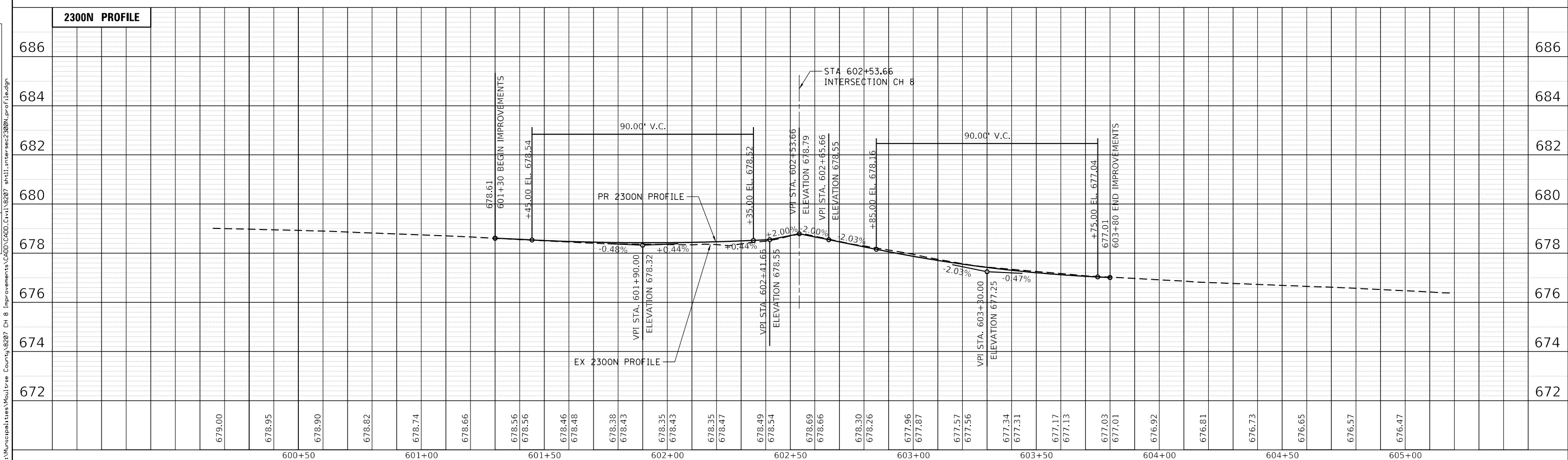
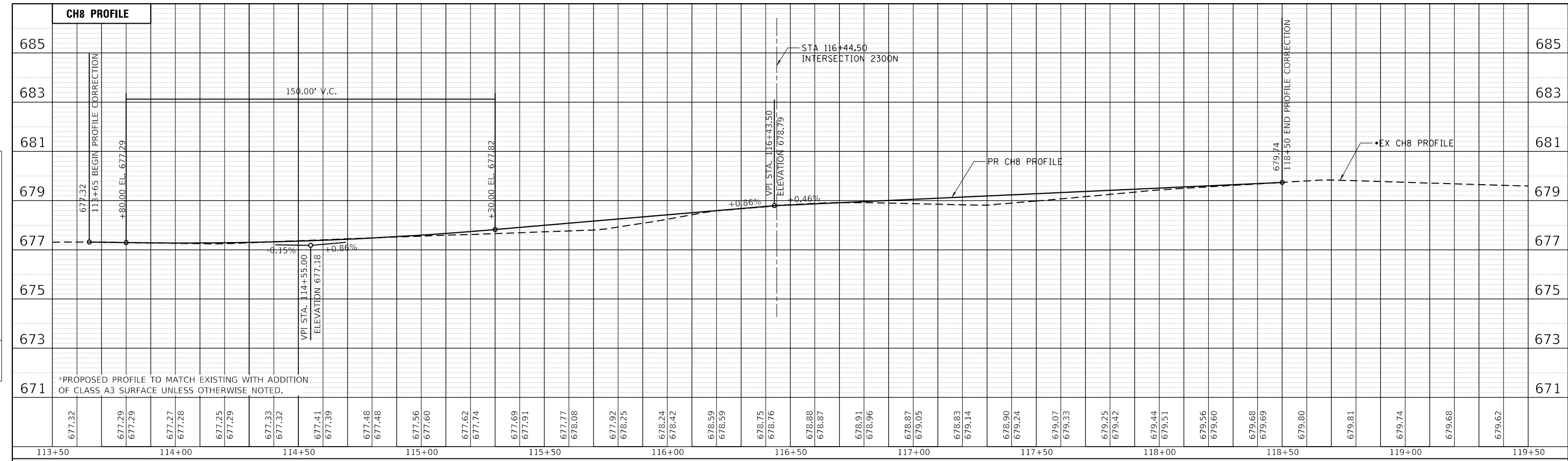
F.A.S. RTE.	SECTION	COUNTY	TOTAL SHEETS	SHEET NO.
659	19-00077-00-PV	MOULTRIE	11	10
CONTRACT NO. 95921				

SCALE: SHEET NO. 1 OF 2 SHEETS STA. TO STA.

ILLINOIS FED. AID PROJECT

PLAN	SURVEYED	BY	DATE
NOTE BOOK NO.	PLOTTED		
	ALIGNMENT CHECKED		
	STRUCTURE NOTATIONS CHECKED		
	CADD FILE NAME		

PROFILE	SURVEYED	BY	DATE
NOTE BOOK NO.	GRADES CHECKED		
	STRUCTURE NOTATIONS CHECKED		
	CADD FILE NAME		



USER NAME = rkoacher	DESIGNED - CMF	REVISED -	CHASTAIN & ASSOCIATES LLC CONSULTING ENGINEERS DECATUR, IL SCHAUMBURG, IL ROCKFORD, IL CHAMPAIGN, IL BENTON, IL LAFAYETTE, IN PADUCAH, KY (833) 424-2782 184-001397	CH8 AND 2300N PROFILES COUNTY HIGHWAY 8 ROADWAY IMPROVEMENTS - MOULTRIE COUNTY		F.A.S. RTE.	SECTION	COUNTY	TOTAL SHEETS	SHEET NO.
PLOT SCALE = 48.0000' / in.	CHECKED - CMF	REVISED -				659	19-00077-00-PV	MOULTRIE	11	11
PLOT DATE = 4/11/2022	DATE - 2/10/2022	REVISED -				CONTRACT NO. 95921				
						SCALE:	SHEET NO. 2 OF 2 SHEETS	STA.	TO STA.	