

STATE OF ILLINOIS
DEPARTMENT OF TRANSPORTATION

F.A.P. RATE:	SECTION	COUNTY	TOTAL SHEETS	SHEET NO.
330	2021-108-RS-SW&FL	LAKE	40	1
ILLINOIS CONTRACT NO. 62P33				

* 40 + 4 = 53 TOTAL SHEETS
* 53 + 7 = 60 TOTAL SHEETS
D-91-193-21

FOR INDEX OF SHEETS, SEE SHEET NO. 2

THE PROJECT IS LOCATED WITHIN:
VILLAGE OF LIBERTYVILLE

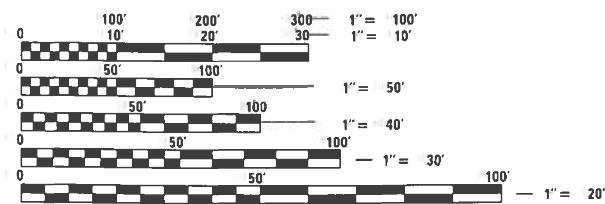
TRAFFIC DATA

OTHER PRINCIPAL ARTERIAL
2019 ADT - 22,900 VPD
POSTED SPEED LIMIT:
CHURCH ST. (PROJ. BEGIN) TO JOHNSON AVE - 25 MPH
JOHNSON AVE TO WINCHESTER RD. - 30 MPH
WINCHESTER RD. TO S/O FINSTAD DR. (PROJ. END) - 35 MPH

**PROPOSED
HIGHWAY PLANS**

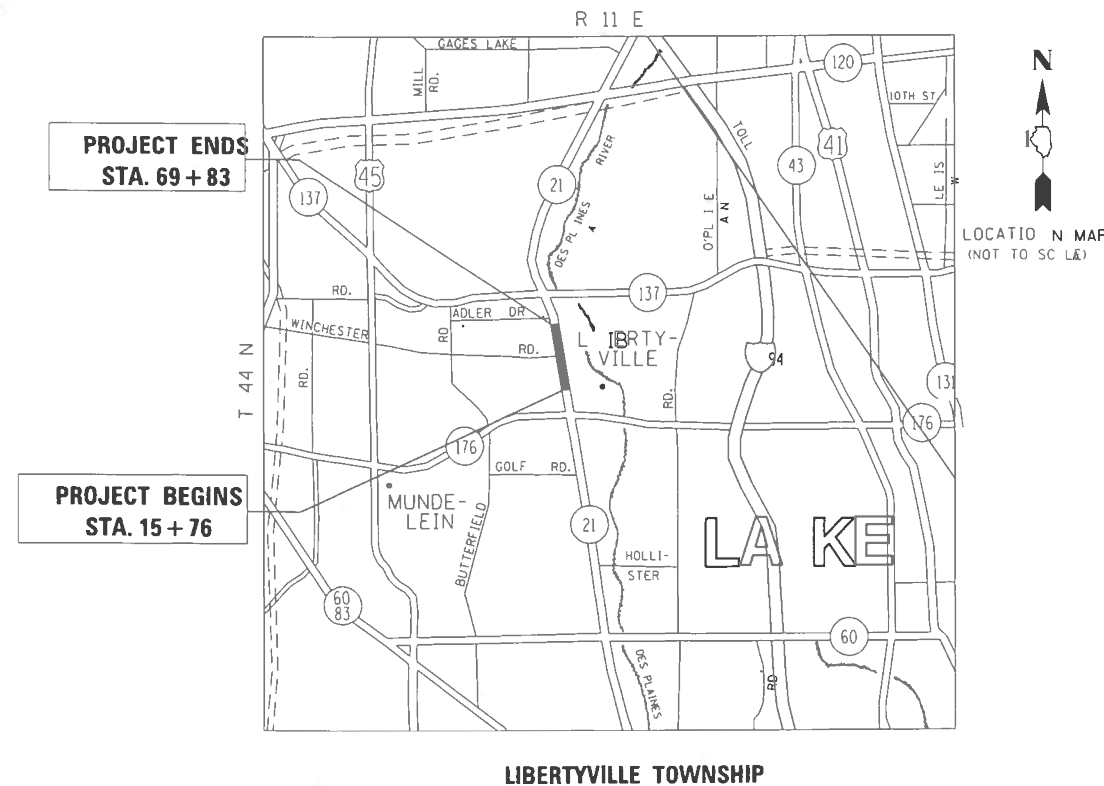
FAP ROUTE 330: IL 21 (MILWAUKEE AVENUE)
CHURCH STREET TO SOUTH OF FINSTAD DRIVE
SECTION 2021-108-RS-SW&FL
PROJECT NHPP-RZ5U(668)
DESIGNED OVERLAY & ADA IMPROVEMENTS
LAKE COUNTY

C-91-230-21



FULL SIZE PLANS HAVE BEEN PREPARED USING STANDARD ENGINEERING SCALES. REDUCED SIZED PLANS WILL NOT CONFORM TO STANDARD SCALES. IN MAKING MEASUREMENTS ON REDUCED PLANS, THE ABOVE SCALES MAY BE USED.

J.U.L.I.E.
JOINT UTILITY LOCATION INFORMATION FOR EXCAVATORS
1-800-892-0123
OR 811



GROSS LENGTH OF PROJECT = 5407 FT. = 1.02 MILE
NET LENGTH OF PROJECT = 5393 FT. = 1.02 MILE

PROJECT ENGINEER: VESELIN VELICHKOV (847) 705-4432
PROJECT MANAGER: FAWAD AQUEEL

CONTRACT NO. 62P33

STATE OF ILLINOIS
DEPARTMENT OF TRANSPORTATION

SUBMITTED: March 11, 2022
Jose Bios [Signature]
REGIONAL ENGINEER

May 13, 2022 [Signature]
ENGINEER OF DESIGN AND ENVIRONMENT

May 13, 2022 [Signature]
DIRECTOR OF HIGHWAYS PROJECT IMPLEMENTATION

PRINTED BY THE AUTHORITY
OF THE STATE OF ILLINOIS

INDEX OF SHEETS

SHEET NO.	DESCRIPTION
1	COVER SHEET
2-3	INDEX OF SHEETS, STANDARDS, AND GENERAL NOTES
4-6	SUMMARY OF QUANTITIES
7-9	TYPICAL SECTIONS
10-11	ROADWAY & PAVEMENT MARKINGS PLANS
11A-11E	NB US 41 (SKOKIE HWY.) - FILLING EXISTING RUMBLE STRIPS
12-16	DETECTOR LOOP PLANS
17-33B	PEDESTRIAN RAMP DETAILS
34	DETAIL FOR SINGLE PERPENDICULAR CURB RAMPS (PD-01)
35	DETAIL FOR PARKING LANE SIGNING PROJECT
36	DETAILS FOR FRAMES AND LIDS ADJUSTMENT WITH MILLING (BD-8)
37	PAVEMENT PATCHING FOR HMA SURFACED PAVEMENT (BD-22)
38	CURB OR CURB AND GUTTER REMOVAL AND REPLACEMENT (BD-24)
39	BUTT JOINT AND HMA TAPER DETAILS (BD-32)
40	TRAFFIC CONTROL AND PROTECTION FOR SIDE ROADS, INTERSECTIONS, AND DRIVEWAYS (TC-10)
41	TYPICAL APPLICATIONS RAISED REFLECTIVE PAVEMENT MARKERS (SNOW-PLOW RESISTANT) (TC-11)
42	DISTRICT ONE TYPICAL PAVEMENT MARKINGS (TC-13)
43	TRAFFIC CONTROL AND PROTECTION AT TURN BAYS (TO REMAIN OPEN TO TRAFFIC) (TC-14)
44	SHORT TERM PAVEMENT MARKING LETTERS AND SYMBOLS (TC-16)
45	ARTERIAL ROAD INFORMATION SIGN (TC-22)
46-47	TYPICAL SUPPLEMENTAL SIGNING AND PAVEMENT MARKING TREATMENT FOR RAILROAD CROSSINGS (TC-23)
48	DRIVEWAY ENTRANCE SIGNING (TC-26)
49	DISTRICT 1 - DETECTOR LOOP INSTALLATION DETAILS FOR ROADWAY RESURFACING (TS-07)



LIST OF STATE STANDARDS

STANDARD NO.	DESCRIPTION
000001-08	STANDARD SYMBOLS, ABBREVIATIONS AND PATTERNS
424001-11	PERPENDICULAR CURB RAMPS FOR SIDEWALKS
424011-04	CORNER PARALLEL CURB RAMPS FOR SIDEWALKS
424021-06	DEPRESSED CORNER FOR SIDEWALKS
424031-02	MEDIAN PEDESTRIAN CROSSINGS
442201-03	CLASS C AND D PATCHES
604001-05	FRAME AND LIDS, TYPE 1
604051-04	FRAME AND GRATES, TYPE 11
604086-05	FRAME AND GRATES, TYPE 23
606001-08	COMBINATION CONCRETE CURB AND GUTTER
701001-02	OFF-ROAD OPERATIONS, 2L, 2W, MORE THAN 15' (4.5 M) AWAY
701006-05	OFF-ROAD OPERATIONS, 2L, 2W, 15' (4.5 M) TO 24" (600 MM) FROM PAVEMENT EDGE
701011-04	OFF-ROAD MOVING OPERATIONS, 2L, 2W, DAY ONLY
701101-05	OFF-ROAD OPERATIONS, MULTILANE, 15' (4.5 m) TO 24" (600 MM) FROM PAVEMENT EDGE
701301-04	LANE CLOSURE, 2L, 2W, SHORT TIME OPERATIONS
701311-03	LANE CLOSURE, 2L, 2W, MOVING OPERATIONS - DAY ONLY
701400-11	APPROACH TO LANE CLOSURE, FREEWAY/EXPRESSWAY
701401-13	LANE CLOSURE, FREEWAY/EXPRESSWAY
701427-05	LANE CLOSURE, MULTILANE, INTERMITTENT OR MOVING OPERATION FOR SPEEDS < 45 MPH
701428-01	TRAFFIC CONTROL SETUP AND REMOVAL FREEWAY/EXPRESSWAY
701601-09	URBAN LANE CLOSURE, MULTILANE, 1W OR 2W WITH NON TRANSVERSABLE MEDIAN
701602-10	URBAN LANE CLOSURE, MULTILANE, 2W WITH BIDIRECTIONAL LEFT TURN LANE
701606-10	URBAN SINGLE LANE CLOSURE, MULTILANE, 2W WITH MOUNTABLE MEDIAN
701701-10	URBAN LANE CLOSURE, MULTILANE INTERSECTION
701801-06	SIDEWALK, CORNER OR SIDEWALK CLOSURE
701901-08	TRAFFIC CONTROL DEVICES
780001-05	TYPICAL PAVEMENT MARKINGS
781001-04	TYPICAL APPLICATIONS RAISED REFLECTIVE PAVEMENT MARKERS
814001-03	HANDHOLES
886001-01	DETECTOR LOOP INSTALLATIONS
886006-01	TYPICAL LAYOUT FOR DETECTOR LOOPS

GENERAL NOTES

- BEFORE STARTING ANY EXCAVATION, THE CONTRACTOR SHALL CALL "J.U.L.I.E." AT 800-892-0123 OR 811 FOR FIELD LOCATIONS OF BURIED ELECTRIC, TELEPHONE AND GAS FACILITIES. (48 HOUR NOTIFICATION IS REQUIRED).
- TEN (10) FOOT TRANSITIONS SHALL BE USED TO MATCH PROPOSED CURB AND GUTTER AND MEDIANS IN THE FIELD, UNLESS OTHERWISE SHOWN. THE TRANSITIONS SHALL BE PAID FOR AT THE CONTRACT UNIT PRICE FOR THE PROPOSED ITEM OF WORK SPECIFIED.
- THE CONTRACTOR SHALL COORDINATE CONSTRUCTION ACTIVITIES WITH UTILITY COMPANIES AND THE VILLAGE OF LIBERTYVILLE.
- THE CONTRACTOR WILL NOT BE ALLOWED TO SET UP A YARD OR FIELD OFFICE ON STATE PROPERTY WITHOUT WRITTEN PERMISSION FROM THE DEPARTMENT.
- WHEN MILLED PAVEMENT IS OPEN TO TRAFFIC THE MAXIMUM GRADE DIFFERENTIAL BETWEEN PASSES OF THE MILLING MACHINE SHALL NOT EXCEED 1 1/2 INCHES (40 MM) WHERE THE SPEED LIMIT IS 45 MPH (85 KM/H) OR LESS AND 1 INCH WHERE THE SPEED LIMIT IS GREATER THAN 45 MPH (85 KM/H). WITH WRITTEN APPROVAL FROM THE ENGINEER, A MAXIMUM GRADE DIFFERENTIAL OF 3 INCHES MAY BE ALLOWED IF THE EDGE OF THE MILLING IS SLOPED A MINIMUM 1:3 (V:H).
- BUTT JOINTS WILL BE INSTALLED AT THE ENDS OF ALL RESURFACING (WHERE RESURFACING MEETS EXISTING PAVEMENT), IN ACCORDANCE WITH THE "BUTT JOINT AND HOT-MIX ASPHALT TAPER DETAILS" SHEET INCLUDED IN THE PLANS, UNLESS OTHERWISE SPECIFIED.
- THE RESIDENT ENGINEER SHALL CONTACT THE AREA TRAFFIC FIELD ENGINEER, FADI SULTAN AT FADI.SULTAN@ILLINOIS.GOV A MINIMUM OF TWO (2) WEEKS PRIOR TO PLACEMENT OF PERMANENT PAVEMENT MARKINGS.
- PAVEMENT MARKING TAPE, TYPE III SHALL BE USED FOR SHORT TERM PAVEMENT MARKINGS ON ALL FINAL SURFACES.
- DO NOT SCALE PLANS FOR CONSTRUCTION DIMENSIONS.
- DOUBLE LANE MARKERS ARE TO BE USED AS SHOWN ON THE DISTRICT ONE DETAIL "TYPICAL APPLICATIONS - RAISED REFLECTIVE PAVEMENT MARKERS (SNOW-PLOW RESISTANT)" SHOWN IN THE PLANS.
- ALL PAVEMENT PATCHING LOCATIONS WILL BE DETERMINED IN THE FIELD BY THE ENGINEER.
- IT SHALL BE THE CONTRACTOR'S RESPONSIBILITY TO VERIFY ALL DIMENSIONS AND CONDITIONS EXISTING IN THE FIELD PRIOR TO CONSTRUCTION AND ORDERING OF MATERIALS.
- THE CONTRACTOR SHALL CONTACT THE DISTRICT ONE TRAFFIC CONTROL SUPERVISOR AT (847) 705 4470 A MINIMUM OF 72 HOURS IN ADVANCE OF BEGINNING WORK.
- THE CONTRACTOR SHALL BE REQUIRED TO PROVIDE ACCESS TO ABUTTING PROPERTY AT ALL TIMES DURING THE CONSTRUCTION OF THIS PROJECT.
- THE CONTRACTOR SHALL MAINTAIN PEDESTRIAN ACCESS AT ALL TIME DURING CONSTRUCTION.
- ANY PAVEMENT MARKINGS AND RAISED REFLECTIVE PAVEMENT MARKERS OBLITERATED BY MILLING AND RESURFACING OPERATIONS ON SIDE STREETS AND ENTRANCES SHALL BE REPLACED AND PAID FOR IN KIND.
- ALL DAMAGE TO EXISTING PAVEMENT MARKINGS OR RAISED REFLECTIVE PAVEMENT MARKERS OUTSIDE THE REMOVAL LINE SHOWN ON THE PLANS SHALL BE REPLACED AT NO ADDITIONAL COST TO THE DEPARTMENT.
- BEFORE BEGINNING ANY WORK, THE CONTRACTOR SHALL RETAIN AND RECORD FOR FUTURE REFERENCE, ALL EXISTING PAVEMENT MARKING LINES (AND RAISED REFLECTIVE PAVEMENT MARKERS) IN ORDER THAT THESE LOCATIONS CAN BE RE-ESTABLISHED FOR STRIPING. EXACT LOCATIONS OF ALL PAVEMENT MARKINGS SHALL BE AS SHOWN ON THE PLANS OR AS DIRECTED BY THE ENGINEER.
- ALL MILLED SURFACES SHALL BE AT A UNIFORM CROSS SLOPE PER LANE AND FREE OF RIDGES BETWEEN PASSES. ANY DEVIATIONS SHALL BE CORRECTED AT NO COST TO THE DEPARTMENT.

1 REVISED SHEET 6/2/2022

MODEL: Default
FILE: \\nas01c-paw.bentley.com\PI\PIDOT\Documents\DOT_Offices\Bartlett_1\Projects\119321\CD\Drawings\Drawings\119321-Sub-Engineering.dgn

USER NAME = babulj	DESIGNED -	REVISED -	05/24/2022
	DRAWN -	REVISED -	
PLOT SCALE = 100.0000 ' / in.	CHECKED -	REVISED -	
PLOT DATE = 5/27/2022	DATE -	REVISED -	

STATE OF ILLINOIS
DEPARTMENT OF TRANSPORTATION

IL 21 (MILWAUKEE AVE.) [CHURCH ST. TO S/O FINSTAD DR.]
INDEX OF SHEETS, STATE STANDARDS & GENERAL NOTES

SCALE: SHEET 1 OF 2 SHEETS STA. TO STA.

F.A.P. RTE.	SECTION	COUNTY	TOTAL SHEETS	SHEET NO.
330	2021-108-R5-SW&FL	LAKE	49	2
				CONTRACT NO. 62P33
		ILLINOIS	FED. AID PROJECT	

SUMMARY OF QUANTITIES			TOTAL QUANTITIES URBAN	CONSTRUCTION TYPE CODE				SUMMARY OF QUANTITIES			TOTAL QUANTITIES URBAN	CONSTRUCTION TYPE CODE					
CODE NO	ITEM	UNIT		ROADWAY 80% FED/ 20% STATE 0005	100% STATE 0005	100% STATE 0021 NB US 41						ROADWAY 80% FED/ 20% STATE 0005	100% STATE 0005	100% STATE 0021 NB US 41			
60406100	FRAMES AND LIDS, TYPE 1, CLOSED LID	EACH	15	15						70300100	SHORT TERM PAVEMENT MARKING	FOOT	9842	9842			
* 66900200	NON-SPECIAL WASTE DISPOSAL	CU YD	60	60						70300150	SHORT TERM PAVEMENT MARKING REMOVAL	SO FT	3281	3281			
* 66900530	SOIL DISPOSAL ANALYSIS	EACH	1	1						70300211	TEMPORARY PAVEMENT MARKING LETTERS AND SYMBOLS - PAINT	SO FT	518	518			
* 66901001	REGULATED SUBSTANCES PRE-CONSTRUCTION PLAN	L SUM	1	1						70300221	TEMPORARY PAVEMENT MARKING - LINE 4"- PAINT	FOOT	17920	17920			
* 66901003	REGULATED SUBSTANCES FINAL CONSTRUCTION REPORT	L SUM	1	1						70300241	TEMPORARY PAVEMENT MARKING - LINE 6"- PAINT	FOOT	2846	2846			
* 66901006	REGULATED SUBSTANCES MONITORING	CAL DA	15	15						70300261	TEMPORARY PAVEMENT MARKING - LINE 12"- PAINT	FOOT	1824	1824			
67100100	MOBILIZATION	L SUM	1	1						70300281	TEMPORARY PAVEMENT MARKING - LINE 24"- PAINT	FOOT	543	543			
70102625	TRAFFIC CONTROL AND PROTECTION, STANDARD 701606	L SUM	1	1						70306120	TEMPORARY PAVEMENT MARKING - LINE 4" - TYPE III TAPE	FOOT	7636	7636			
70102630	TRAFFIC CONTROL AND PROTECTION, STANDARD 701601	L SUM	1	1						* 78000100	THERMOPLASTIC PAVEMENT MARKING - LETTERS AND SYMBOLS	SO FT	640	640			
70102632	TRAFFIC CONTROL AND PROTECTION, STANDARD 701602	L SUM	1	1						* 78000200	THERMOPLASTIC PAVEMENT MARKING - LINE 4"	FOOT	17920	17920			
70102635	TRAFFIC CONTROL AND PROTECTION, STANDARD 701701	L SUM	1	1						* 78000400	THERMOPLASTIC PAVEMENT MARKING - LINE 6"	FOOT	2846	2846			△ REVISED SHEET 6/2/2022
70102640	TRAFFIC CONTROL AND PROTECTION, STANDARD 701801	L SUM	1	1						* 78000500	THERMOPLASTIC PAVEMENT MARKING - LINE 8"	FOOT	620	620			* SPECIALTY ITEM
72400500	RELOCATE SIGN PANEL - TYPE A	EACH	2	2													

SUMMARY OF QUANTITIES			TOTAL QUANTITIES	CONSTRUCTION TYPE CODE			
CODE NO	ITEM	UNIT		ROADWAY 80% FED/ 20% STATE 0005	100% STATE 0005	100% STATE 0021 NB US 41	
* 78000600	THERMOPLASTIC PAVEMENT MARKING - LINE 12"	FOOT	1824	1824			
* 78000650	THERMOPLASTIC PAVEMENT MARKING - LINE 24"	FOOT	543	543			
* 78009005	MODIFIED URETHANE PAVEMENT MARKING - LINE 5"	FOOT	70		70		△
* 78100100	RAISED REFLECTIVE PAVEMENT MARKER	EACH	570	570			
78300200	RAISED REFLECTIVE PAVEMENT MARKER REMOVAL	EACH	545	545			
* 85000200	MAINTENANCE OF EXISTING TRAFFIC SIGNAL INSTALLATION	EACH	4	4			
* 88600600	DETECTOR LOOP REPLACEMENT	FOOT	1234	1234			
* 89500400	RELOCATE EXISTING PEDESTRIAN PUSH-BUTTON	EACH	24	24			
* 89502376	REBUILD EXISTING HANDHOLE	EACH	4	4			
X0320050	CONSTRUCTION LAYOUT (SPECIAL)	L SUM	1	1			
X0327611	REMOVE AND REINSTALL BRICK PAVER	SO FT	3707 2300	3707 2300			△
X0327890	DRIVEWAY REMOVAL AND REPLACEMENT	SO YD	25	25			
X4060995	TEMPORARY RAMP, SPECIAL	SO YD	367	367			

SUMMARY OF QUANTITIES			TOTAL QUANTITIES	CONSTRUCTION TYPE CODE			
CODE NO	ITEM	UNIT		ROADWAY 80% FED/ 20% STATE 0005	100% STATE 0005	100% STATE 0021 NB US 41	
X4400501	COMBINATION CURB AND GUTTER REMOVAL AND REPLACEMENT LESS THAN OR EQUAL TO 10 FEET	FOOT	300	300			
X5537800	STORM SEWERS TO BE CLEANED 12"	FOOT	1000		1000		
X6030310	FRAMES AND LIDS TO BE ADJUSTED (SPECIAL)	EACH	65	65			
X6700407	ENGINEER'S FIELD OFFICE, TYPE A (D1)	CAL MO	12	12			
X7011015	TRAFFIC CONTROL AND PROTECTION (EXPRESSWAYS)	L SUM	1			1	△
Z0004562	COMBINATION CONCRETE CURB AND GUTTER REMOVAL AND REPLACEMENT	FOOT	1439	1439			
Z0018400	DRAINAGE STRUCTURES TO BE ADJUSTED	EACH	48	48			
Z0018500	DRAINAGE STRUCTURES TO BE CLEANED	EACH	110		110		
Z0018600	DRAINAGE STRUCTURES TO BE RECONSTRUCTED	EACH	5	5			
Z0030850	TEMPORARY INFORMATION SIGNING	SO FT	345.9	345.9			
Z0048665	RAILROAD PROTECTIVE LIABILITY INSURANCE	L SUM	1	1			
Z0076600	TRAINEES	HOURS	500	500			
Z0076604	TRAINEES - TRAINING PROGRAM GRADUATE	HOURS	500	500			
70107025	CHANGABLE MESSAGE SIGN	CAL DA	14			14	
70200100	NIGHTTIME WORK ZONE LIGHTING	L SUM	1			1	△
X0326650	FILLING EXISTING RUMBLE STRIP	FOOT	360			360	* SPECIALTY ITEM

FILE NAME =	USER NAME = bobuln	DESIGNED -	REVISED -
pw\N\dot-pw\benly.com\PW\DOT\Documents\DOT - Of Files\District\Projects\DI1932\CAD\Drawn\Design\DI1932-st-S04.d		DRAWN -	REVISED -
		CHECKED -	REVISED -
		DATE -	REVISED -

**STATE OF ILLINOIS
DEPARTMENT OF TRANSPORTATION**

**IL 21 (MILWAUKEE AVE.) CHURCH ST. TO S0 FINSTAD DR.
SUMMARY OF QUANTITIES**

F.A.P. RTE.	SECTION	COUNTY	TOTAL SHEETS	SHEET NO.
330	2021-108-RS-SW&FL	LAKE	49	6
CONTRACT NO. 62P33				
FED. ROAD DIST. NO. 1 ILLINOIS FED. AID PROJECT				

NB US 41 SKOKIE HIGHWAY 0.25 MILES SOUTH OF WEST PARK AVENUE FILLING EXISTING RUMBLE STRIPS LAKE COUNTY

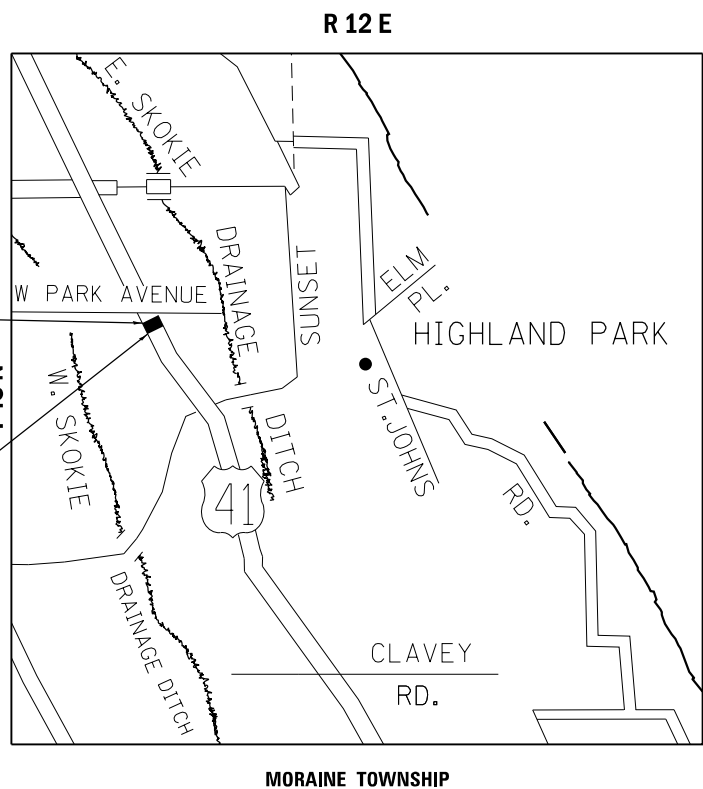
THE IMPROVEMENT IS LOCATED IN
THE CITY OF HIGHLAND PARK

TRAFFIC DATA:

**2017 ADT = 56,000
SPEED LIMIT = 55 MPH**

NB US 41
IMPROVEMENT ENDS:
STA 102+25

NB US 41
IMPROVEMENT BEGINS:
STA 97+00



LOCATION MAP
(NOT TO SCALE)

GROSS LENGTH = NET LENGTH = 525 FT. = 0.1 MILE

INDEX OF SHEETS

DESCRIPTION	SHEET NO.
11A	NB US 41 PROJECT LOCATION, INDEX OF SHEETS, STANDARDS
11B	ROADWAY PLANS
11C-11D	TC-12 MULTI-LANE FREEWAY [AVEMENT MARKING (2 SHEETS)
11E	TC-17 TRAFFIC CONTROL FOR FREEWAY SHOULDER CLOSURES AND PARTIAL RAMP CLOSURES
45	TC-22 ARTERIAL ROAD INFORMATION SIGN

HIGHWAY STANDARDS

STANDARD NO.	DESCRIPTION
701400-11	APPROACH TO LANE CLOSURE, FREEWAY/EXPRESSWAY
701401-13	LANE CLOSURE, FREEWAY/EXPRESSWAY
701428-01	TRAFFIC CONTROL SETUP AND REMOVAL FREEWAY/EXPRESSWAY
701901-08	TRAFFIC CONTROL SETUP DEVICES

GENERAL NOTES

- 1) THE CONTRACTOR SHALL COORDINATE CONSTRUCTION ACTIVITIES WITH THE CITY OF HIGHLAND PARK
- 2) THE CONTRACTOR WILL NOT BE ALLOWED TO SET UP A YARD OR FIELD OFFICE ON STATE PROPERTY WITHOUT WRITTEN PERMISSION FROM THE DEPARTMENT.
- 3) DO NOT SCALE PLANS FOR CONSTRUCTION DIMENSIONS.
- 4) WORK TO TAKE PLACE OVERNIGHT AND LANE CLOSURES SHALL BE OPEN FOR DAY TIME TRAFFIC
- 5) THE CONTRACTOR SHALL REQUEST AND GAIN APPROVAL FROM THE ILLINOIS DEPARTMENT OF TRANSPORTATION EXPRESSWAY TRAFFIC OPERATIONS ENGINEER AT WWW.IDOTLCS.COM TWENTY-FOUR (24) HOURS IN ADVANCE OF ALL DAILY LANE, RAMP, AND SHOULDER CLOSURES AND 7 DAYS IN ADVANCE OF ALL PERMANENT AND WEEKEND CLOSURES ON ALL FREEWAYS AND/ OR EXPRESSWAYS IN DISTRICT ONE. THIS ADVANCE NOTIFICATION IS CALCULATED BASED ON A WORK-WEEK OF MONDAY THROUGH FRIDAY AND SHALL NOT INCLUDE WEEKENDS OR HOLIDAYS.
- 6) THE RESIDENT ENGINEER SHALL CONTACT THE EXPRESSWAY TRAFFIC CONTROL SUPERVISOR AT (847) 705-4155 A MINIMUM OF 72 HOURS PRIOR TO THE INSTALLATION OF ANY TEMPORARY TRAFFIC CONTROL DEVICES.
- 7) THE RESIDENT ENGINEER SHALL CONTACT THE EXPRESSWAY FIELD ENGINEER AT (847) 705-4153 TWO WEEKS PRIOR TO PLACEMENT OF PERMANENT PAVEMENT MARKINGS.

ADDE ENTIRE SHEET 6/2/2022

MODEL: Default
FILE: \\nas01\paw.bentley.com\PI\DOT\Documents\DOT_Offices\Bartlett_1\Projects\119321\UC\00\Drawings\119321-62108-R5-Rumble_Strip-shc-detailed.dgn

USER NAME = babulnj	DESIGNED -	REVISED -
	DRAWN -	REVISED -
PLOT SCALE = 100,0000' / in.	CHECKED -	REVISED -
PLOT DATE = 5/25/2022	DATE -	REVISED -

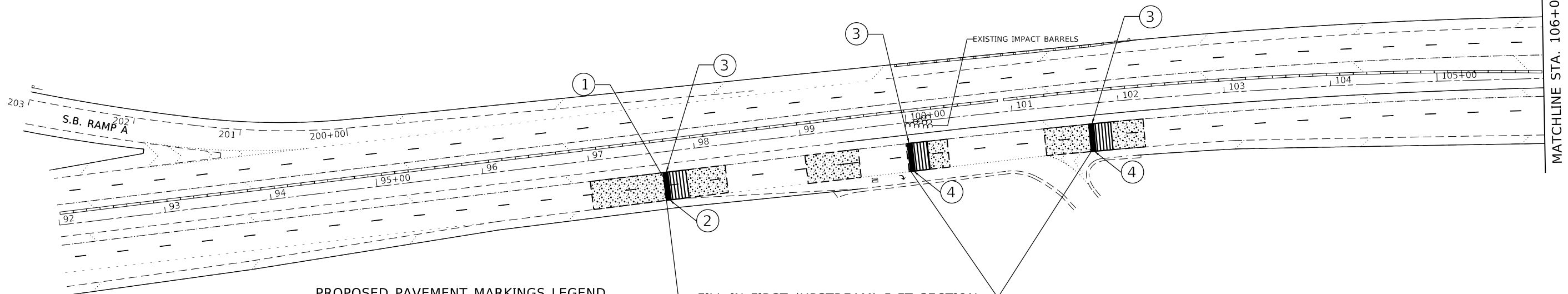
**STATE OF ILLINOIS
DEPARTMENT OF TRANSPORTATION**

NB U.S. ROUTE 41 (SKOKIE HWY.) (SOUTH OF WEST PARK AVENUE)	
LOCATION MAP, INDEX OF SHEETS, STATE STANDARDS & GENERAL NOTES	
SCALE:	SHEET OF SHEETS STA. TO STA.

F.A.P. RTE.	SECTION	COUNTY	TOTAL SHEETS	SHEET NO.
	2021-108-R5-SW&FL	LAKE	49	11A
ILLINOIS			FED. AID PROJECT	

CONTRACT NO. 62P33

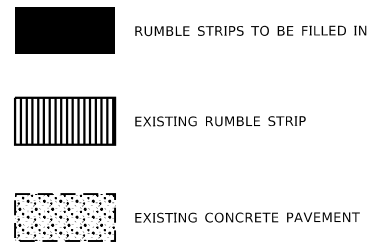
U.S. ROUTE 41
(SKOKIE HIGHWAY)



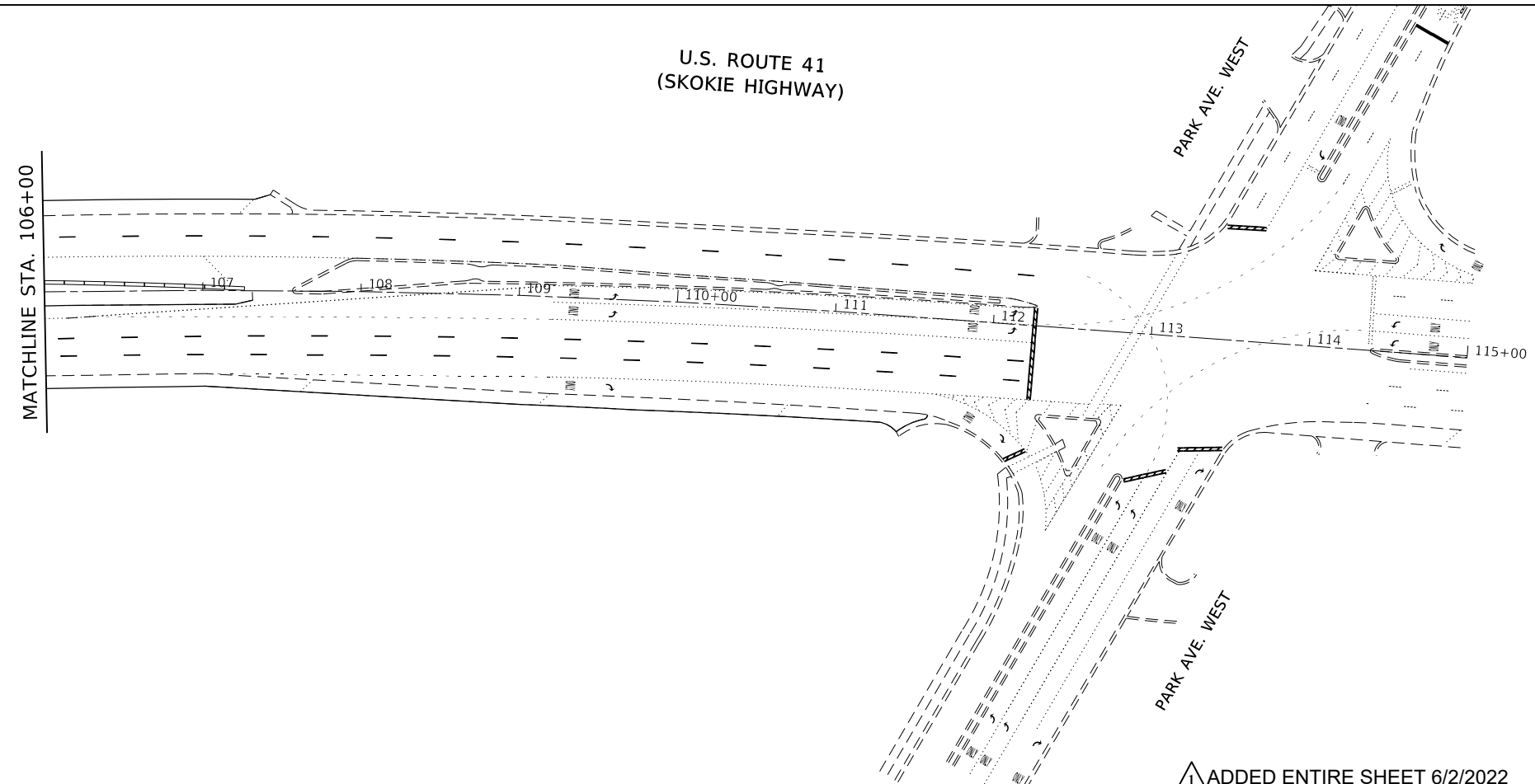
PROPOSED PAVEMENT MARKINGS LEGEND

- ① MODIFIED URETHANE PAVEMENT MARKING - LINE 5", 10' DASH - 30' SPACE, WHITE (TYP.)
- ② THERMOPLASTIC PVMT. MARKING 4", SOLID EDGE LINE, WHITE (TYP.)
- ③ THERMOPLASTIC PVMT. MARKING 4", SOLID EDGE LINE, YELLOW (TYP.)
- ④ THERMOPLASTIC PVMT. MARKING 8", LINE, WHITE (TYP.)

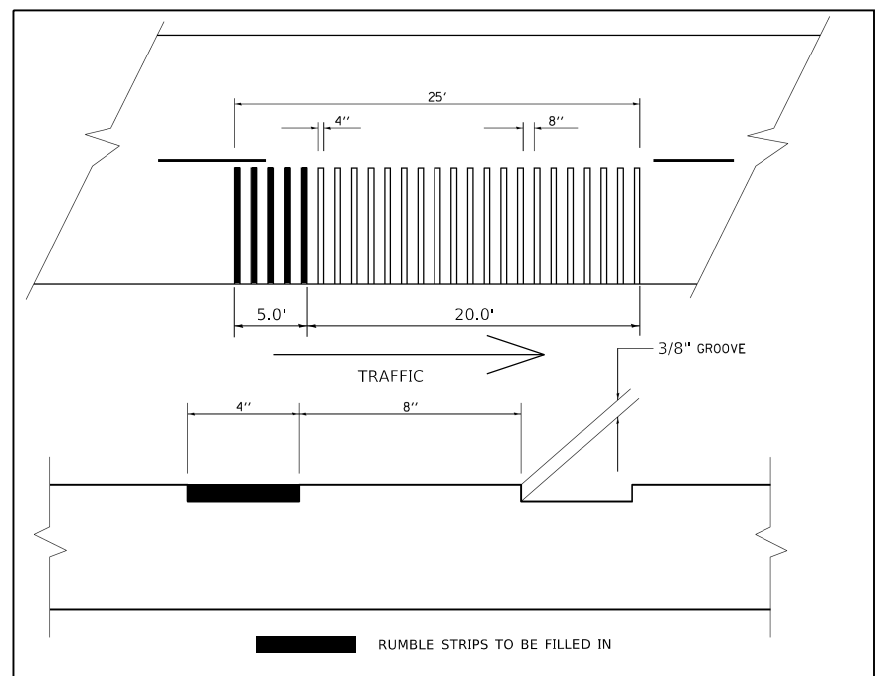
FILL IN FIRST (UPSTREAM) 5-FT SECTION OF TRANSVERSE RUMBLE STRIPS



U.S. ROUTE 41
(SKOKIE HIGHWAY)



TRANSVERSE RUMBLE STRIP DETAIL



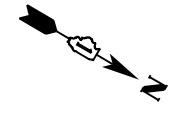
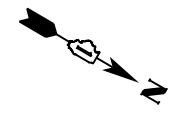
ADDED ENTIRE SHEET 6/2/2022

USER NAME = babuln]	DESIGNED -	REVISED -
	DRAWN -	REVISED -
PLOT SCALE = 100,0000' / in.	CHECKED -	REVISED -
PLOT DATE = 5/27/2022	DATE -	REVISED -

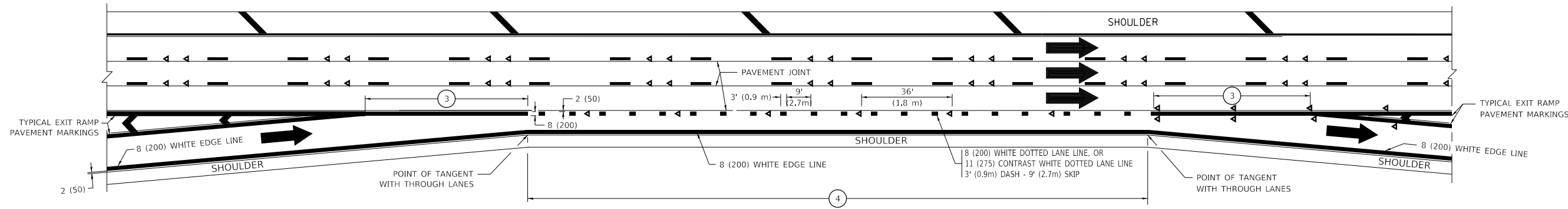
STATE OF ILLINOIS
DEPARTMENT OF TRANSPORTATION

NB U.S. ROUTE 41 (SKOKIE HWY.) (SOUTH OF WEST PARK AVENUE)
ROADWAY PLAN
SCALE: 1"= 50' SHEET OF SHEETS STA. 92+00 TO STA. 115+00

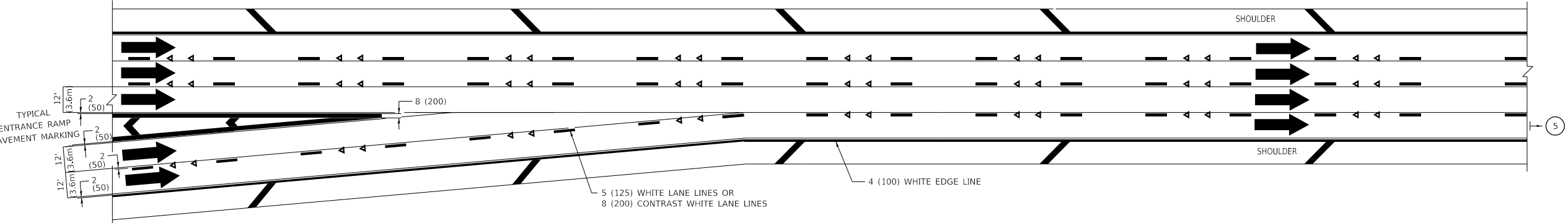
F.A.P. RTE.	SECTION	COUNTY	TOTAL SHEETS	SHEET NO.
	2021-108-R5-SW&FL	LAKE	49	11B
CONTRACT NO. 62P33				
ILLINOIS FED. AID PROJECT				



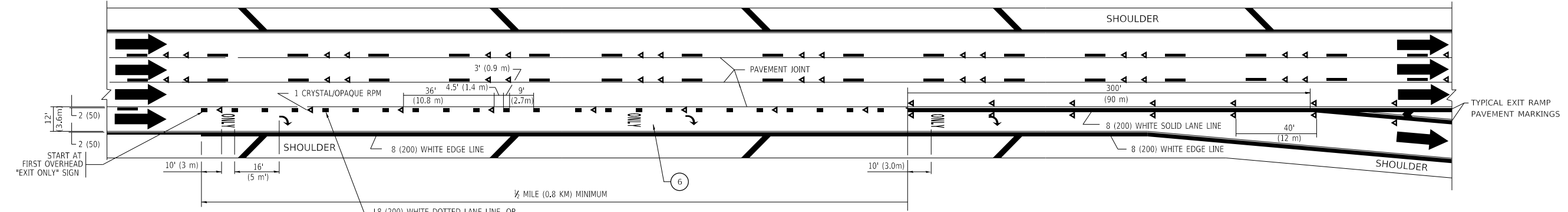
MODEL: Default
 FILE: \\nas01csw.bentley.com\FWIDOT\Documents\DOT_Offices\Bharat_1\Projects\119321\ICAD\data\Design\119321-62P33-Rumble_Strip-sh-detailed.dgn



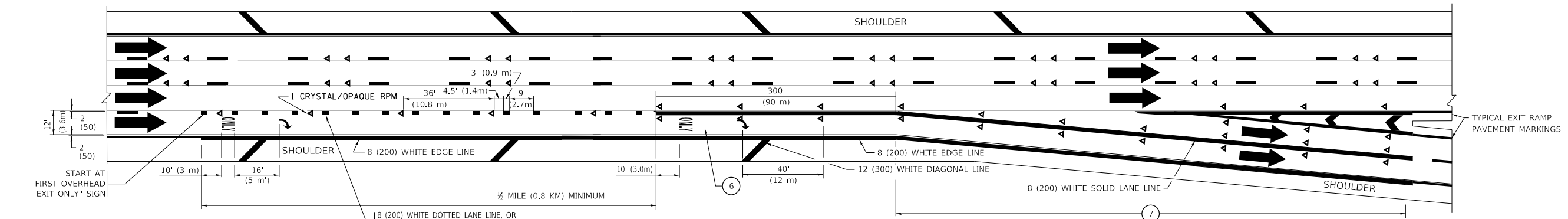
AUXILIARY LANE MARKINGS



TWO LANE ENTRANCE RAMP WITH MERGE MARKINGS



EXIT ONLY LANE MARKINGS



EXIT ONLY WITH OPTION LANE MARKINGS

- NOTES:**
- ③ OMIT WHEN LENGTH OF AUXILIARY LANE IS LESS THAN 500' (150 m).
 - ④ 8-INCH WIDE DOTTED LANE LINE MARKINGS SHALL BE USED WHEN THE LENGTH OF THE AUXILIARY LANE IS 2 MILES OR LESS.
 - ⑤ FOR TWO-LANE ENTRANCE RAMP, IF RIGHT LANE ENDS, USE TYPICAL ENTRANCE RAMP PAVEMENT MARKINGS.
 - ⑥ ONLY AND ARROWS EQUALLY SPACED, 500' (150 m) MAXIMUM SPACING. FULL SIZE LETTERS AND ARROW SHALL BE USED.
 - ⑦ CONTINUE 8" SOLID LANE LINE THROUGH EXIT TO END OF PAVED GORE.

① ADDED ENTIRE SHEET 6/2/2022

USER NAME = babuln	DESIGNED - D.W.S.	REVISED - J.A.F. 02-06
	DRAWN -	REVISED - S.P.B. 01-07
PLOT SCALE = 100,0000' / in.	CHECKED -	REVISED - S.P.B. 01-10
PLOT DATE = 5/25/2022	DATE - 01-90	REVISED - M.D. 09-17

STATE OF ILLINOIS
DEPARTMENT OF TRANSPORTATION

MULTI-LANE FREEWAY
PAVEMENT MARKING DETAILS

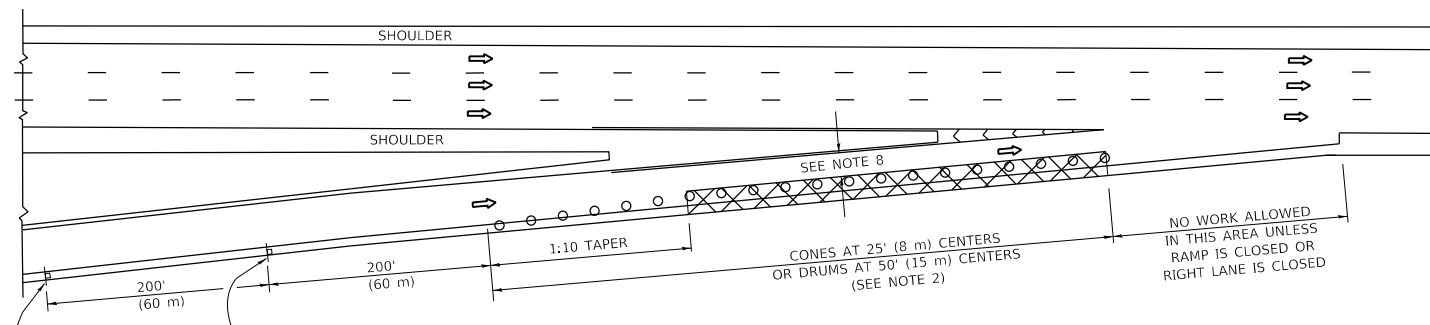
SCALE: NONE SHEET 2 OF 2 SHEETS STA. TO STA.

F.A.P. RTE.	SECTION	COUNTY	TOTAL SHEETS	SHEET NO.
	2021-108-R5-SW&FL	LAKE	49	110
TC-12		CONTRACT NO. 62P33		
ILLINOIS		FED. AID PROJECT		

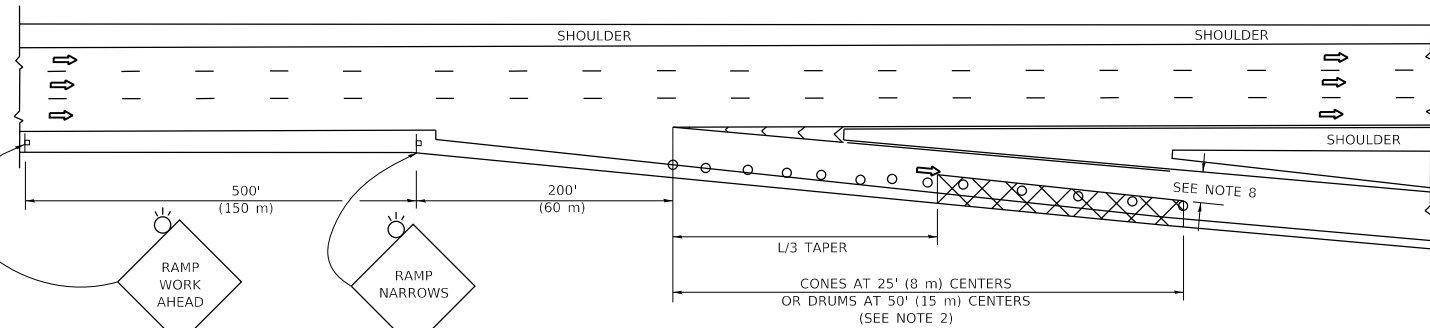
Model: Default
 File: \\paw-backend\paw-backend\com\paw\DOT\Documents\DOT_Offices\Bharat_I\Projects\101932\UCD\data\Drawn\BDFES.dgn

PARTIAL RAMP CLOSURE DETAILS

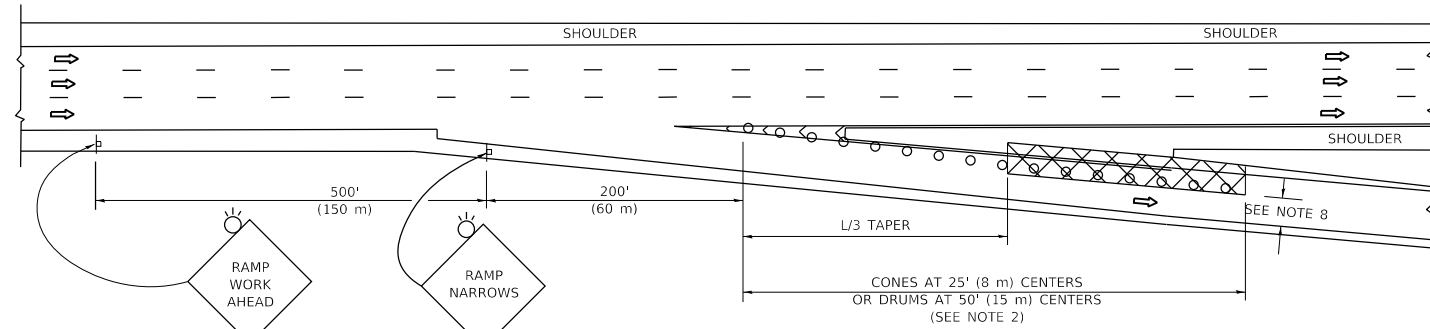
SHOULDER CLOSURE DETAILS



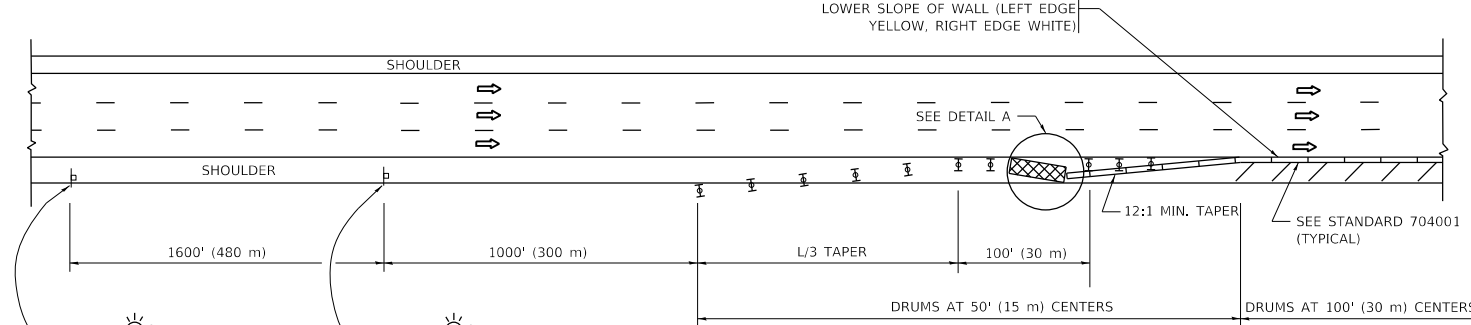
TYPICAL ENTRANCE RAMP



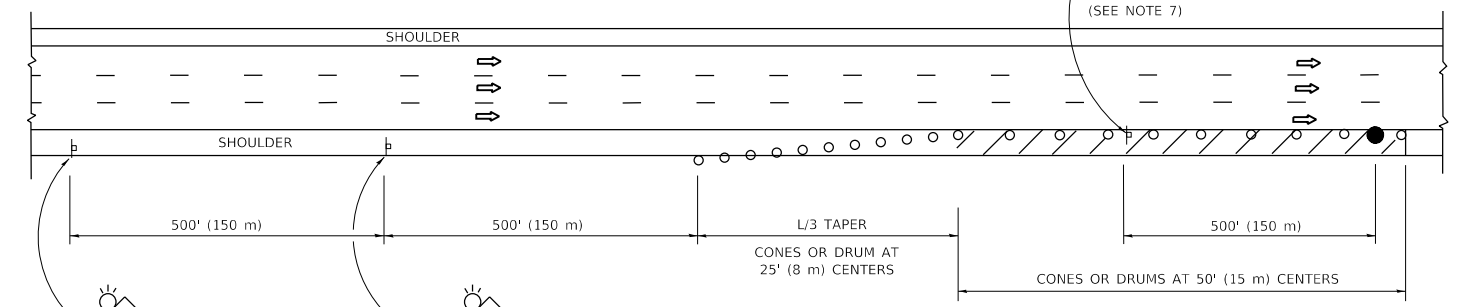
TYPICAL EXIT RAMP



TYPICAL EXIT RAMP



PERMANENT SHOULDER CLOSURE



TEMPORARY SHOULDER CLOSURE

THIS DETAIL IS USED WHERE:
 1. VEHICLES, EQUIPMENT, WORKERS OR THEIR ACTIVITIES ENCOACH IN AN AREA CLOSER THAN 15' (4.5 m) TO THE EDGE OF PAVEMENT FOR A PERIOD IN EXCESS OF 15 MINUTES.



ARRAY DESIGN PER MANUFACTURER TO BE NCHRP 350/MASH COMPLIANT.

DETAIL "A"
 IMPACT ATTENUATOR, TEMPORARY
 (SEE NOTE 5)

SYMBOLS

- ACTIVE WORK AREA
- SIGN ON PORTABLE OR PERMANENT SUPPORT
- FLAGGER WITH CONTROL SIGN
- TYPE II BARRICADE OR DRUM
- CONE, DRUM OR BARRICADE
- IMPACT ATTENUATOR OF TYPE AND TEST LEVEL SPECIFIED

GENERAL NOTES:

1. THE "L" DISTANCE EQUALS:

SPEED LIMIT	FORMULAS
45 mph (80 km/h)	METRIC ENGLISH
OR GREATER:	$L=0.65(W/S)$ $L=(W/S)$
W = WIDTH OF OFFSET IN FEET (METERS)	
S = NORMAL POSTED SPEED MPH (KM/H)	
2. TYPE II BARRICADES OR DRUMS ARE REQUIRED FOR ALL NIGHTTIME CLOSURES. TYPE II BARRICADES OR DRUMS WITH MONODIRECTIONAL STEADY BURN LIGHTS ARE REQUIRED FOR DELINEATING OBSTACLES, EXCAVATIONS, OR HAZARDS EXCEEDING 100 FT (30m) IN LENGTH AT NIGHT.
3. ALL SIGNS SHALL BE POST MOUNTED IF THE CLOSURE TIME EXCEEDS FOUR DAYS.
4. FLASHING LIGHTS SHALL BE USED DURING THE HOURS OF DARKNESS AND SHALL BE INSTALLED ABOVE THE FIRST TWO SETS OF SIGNS.

5. THE IMPACT ATTENUATOR, TEMPORARY IS NOT REQUIRED WHEN THE TEMPORARY CONCRETE BARRIER WALL IS PROTECTED BY OR IS TIED INTO THE EXISTING GUARDRAIL. IF OFFSET IS LESS THAN 5 FEET USE NARROW USE TYPE DEVICE TO MEET NCHRP350/MASH.
6. AUTHORIZATION FROM THE DISTRICT'S BUREAU OF TRAFFIC IS REQUIRED FOR ALL FREEWAY CLOSURES.
7. THE FLAGGER AND FLAGGER SIGN ARE REQUIRED AT THE ABOVE WORK SITES WHEN:
 - a. FOUR OR MORE WORK VEHICLES ENTER THE TRAFFIC LANES IN A ONE HOUR PERIOD.
 - b. THE WORK AVTIVITY REQUIRES FREQUENT ENCOACHMENT INTO THE LANE OPEN TO TRAFFIC.
 THE FLAGGER SHALL BE STATIONED APPROXIMATELY 100' (30 m) TO 200' (60 m) IN ADVANCE OF THE WORKERS.

8. 12' MIN. WIDTH TANGENT SECTION
 16' MIN. WIDTH CURVE SECTION.

9. TEMPORARY SHOULDER AND NON-SYSTEM INTERCHANGE PARTIAL RAMP CLOSURES ARE ALLOWED WEEKDAYS BETWEEN 9:00 A.M. AND 3:00 P.M. AND BETWEEN 7:00 P.M. AND 5:00 A.M. OR AS APPROVED BY THE EXPRESSWAY TRAFFIC OPERATIONS ENGINEER. PERMANENT SHOULDER AND PARTIAL RAMP CLOSURES WILL ONLY BE PERMITTED IF CALLED FOR IN THE PLANS OR AS APPROVED BY THE EXPRESSWAY OPERATIONS ENGINEER.

ADDED ENTIRE SHEET 6/2/2022

ALL DIMENSIONS ARE IN INCHES (MILLIMETERS) UNLESS OTHERWISE SHOWN.

MODEL: Default
 FILE: \\pawlib01\paw\benefits\com\PI\DOT\Documents\DOT_Offices\Bharde\1\Projects\119321\CD\Drawings\Drawings\BHE5.dgn
 PROJECT: 119321

USER NAME = babuln	DESIGNED -	REVISED - S.P.B. 12-09
	DRAWN - D.W.S.	REVISED - M.D. 06-13
PLOT SCALE = 100.0000' / in.	CHECKED -	REVISED - M.D. 01-18
PLOT DATE = 5/25/2022	DATE - 11-96	REVISED - M.D. 10-20

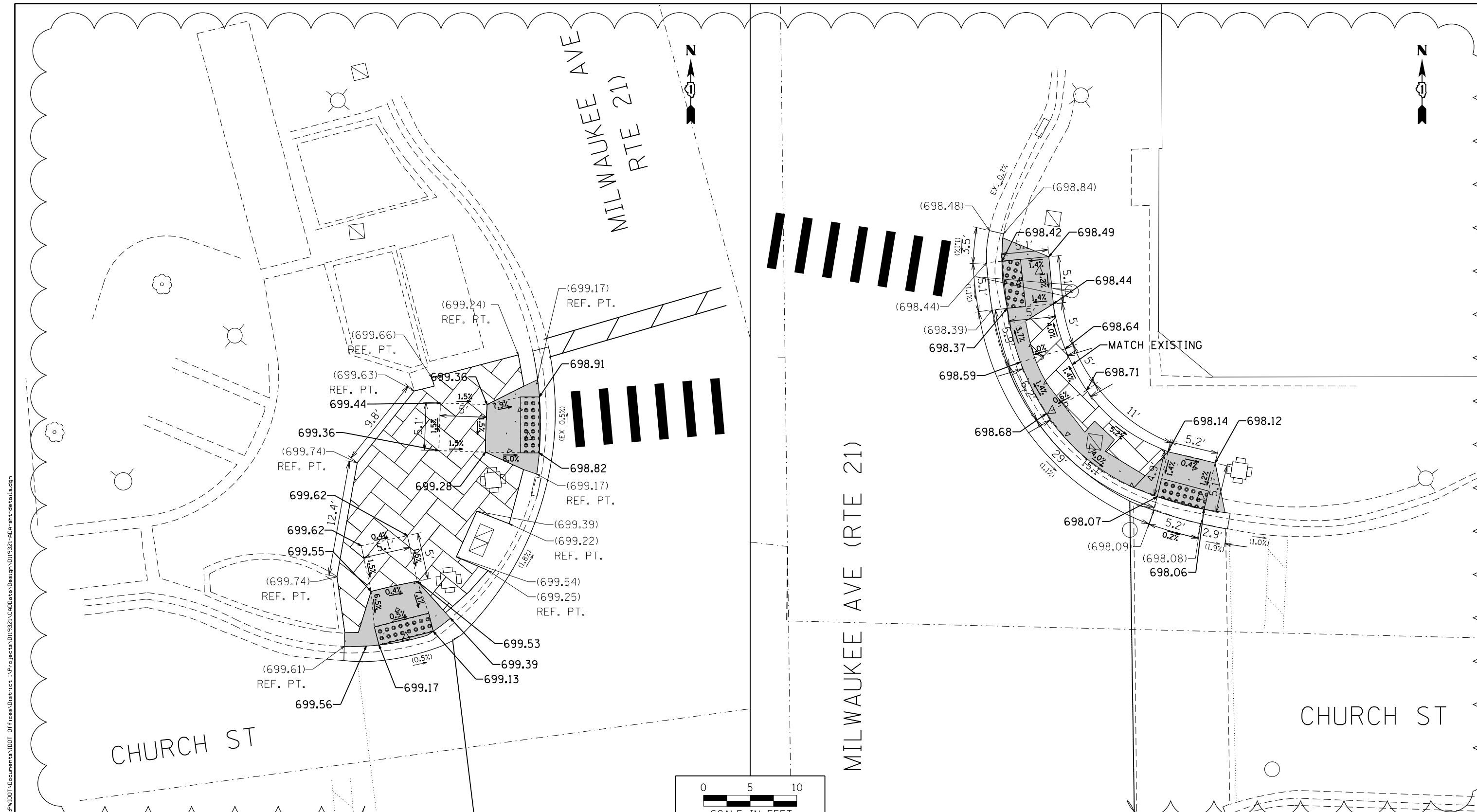
**STATE OF ILLINOIS
 DEPARTMENT OF TRANSPORTATION**

**TRAFFIC CONTROL DETAILS FOR FREEWAY
 SHOULDER CLOSURES AND PARTIAL RAMP CLOSURES**

SCALE: NONE SHEET 1 OF 1 SHEETS STA. TO STA.

F.A.P. RTE.	SECTION	COUNTY	TOTAL SHEETS	SHEET NO.
	2021-108-R5-SW&FL	LAKE	49	11E
TC-12			CONTRACT NO. 62P33	
ILLINOIS FED. AID PROJECT				

FILE NAME = p:\dot-pw\bentley.com\PI\DOT Documents\DOT Offices\District 1\Projects\0119321\CADDData\Design\0119321-ADA-shr-details.dgn



REFERENCE BENCHMARK ELEV.
BENCHMARK :
LOCATION :

LEGEND		REFERENCE BENCHMARK ELEV.	
	PROPOSED SIDEWALK		CLASS D PATCH
	EXISTING LENGTH		DETECTABLE WARNINGS
	EXISTING ELEVATION/SLOPE		SIDEWALK REMOVAL
	PROPOSED SIDE CURB		REPLACE W/TOPSOIL & SOD
	REMOVE AND REINSTALL BRICK PAVERS		

REFERENCE BENCHMARK ELEV.
BENCHMARK :
LOCATION :
1

FILE NAME =	USER NAME = bobnj	DESIGNED -	REVISION 1	05/31/2022
p:\dot-pw\bentley.com\PI\DOT Documents\DOT Offices\District 1\Projects\0119321\CADDData\Design\0119321-ADA-shr-details.dgn		CHECKED -	REVISION -	
Default		PLOT DATE = 5/27/2022	REVISION -	

STATE OF ILLINOIS
DEPARTMENT OF TRANSPORTATION

SCALE:				SHEET 2	OF 3	SHEETS	STA.	TO STA.
--------	--	--	--	---------	------	--------	------	---------

F.A.P. RTE.	SECTION	COUNTY	TOTAL SHEETS	SHEET NO.
330	2021-108-RS-SW&FL	LAKE	49	18
CONTRACT NO. 62P33				
ILLINOIS FED. AID PROJECT				

REVISED SHEET 6/2/2022



SOUTHWEST CORNER



SOUTHEAST CORNER



EXISTING



NORTHWEST CORNER

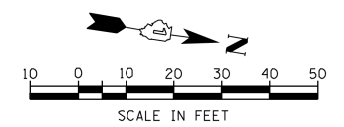


NORTHEAST CORNER



PROPOSED

NOTE: MUNICIPAL COORDINATION REQUIRED ON ALL REMOVAL AND REINSTALLMENT OF BRICK PAVERS



MODEL: Default
FILE: \\fs1\caw_bentley.com\PI\DOT\Documents\DOT_Offices\Bartlett_1\Projects\119321\119321\119321-1-10-2022\119321-1-10-2022.dgn

USER NAME = babulnj	DESIGNED -	REVISED -	05/31/2022
	DRAWN -	REVISED -	
PLOT SCALE = 10.0000' / in.	CHECKED -	REVISED -	
PLOT DATE = 5/27/2022	DATE -	REVISED -	

**STATE OF ILLINOIS
DEPARTMENT OF TRANSPORTATION**

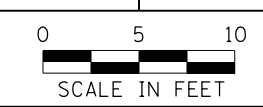
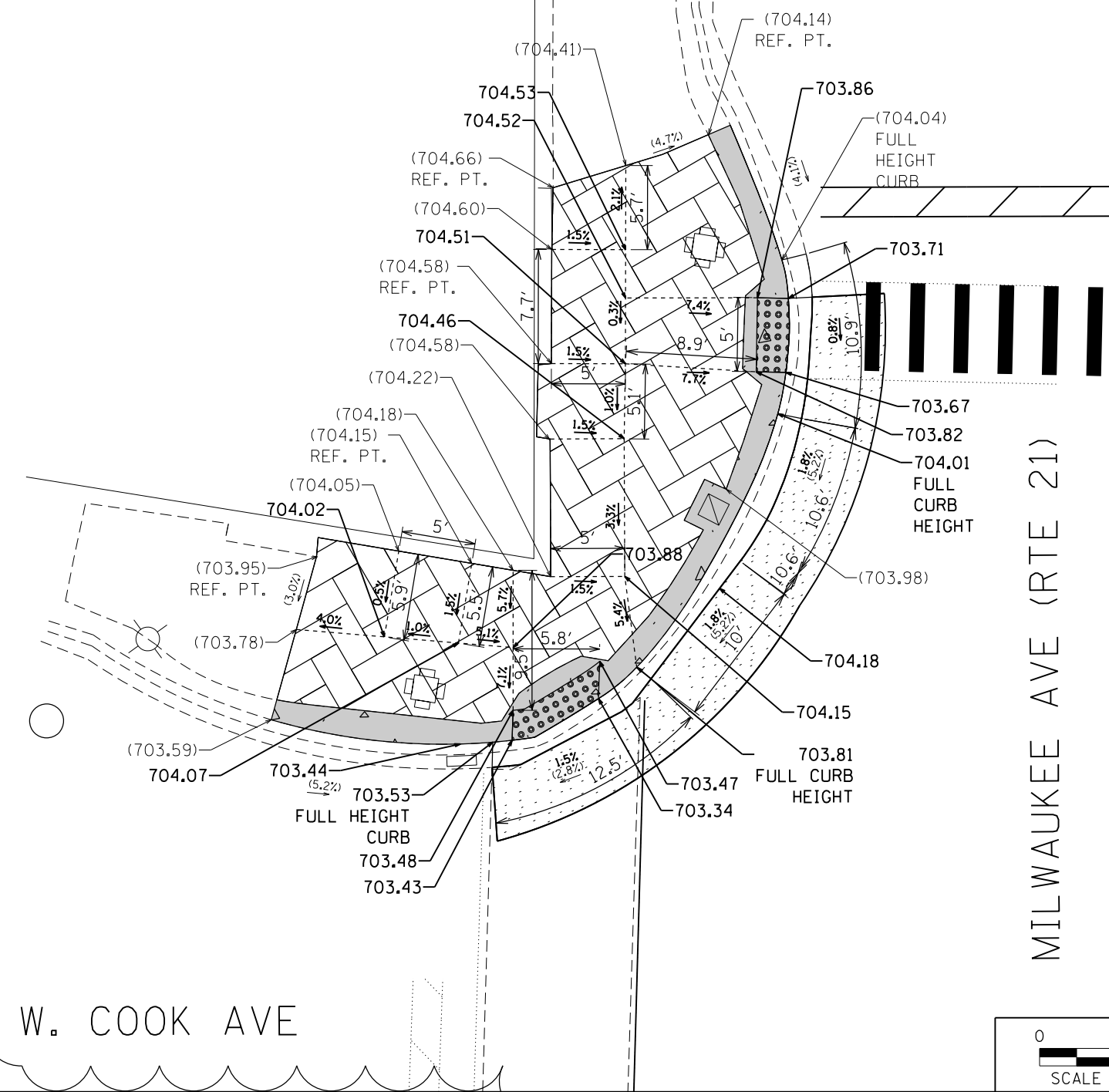
**ADA RAMPS EXISTING AND PROPOSED PLANS
IL 21 (MILWAUKEE AVE.) & COOK AVE.**

SCALE: SHEET 1 OF 3 SHEETS STA. TO STA.

F.A.P. RTE.	SECTION	COUNTY	TOTAL SHEETS	SHEET NO.
330	2021-108-R5-SW&FL	LAKE	49	20
CONTRACT NO. 62P33				
ILLINOIS FED. AID PROJECT				

REVISED SHEET 6/2/2022

FILE NAME = p:\dot-pw\bentley.com\PI\DOT\Documents\DOT\Offices\District 1\Projects\0119321\CADDData\Design\0119321-ADA-shr-details.dgn



REFERENCE BENCHMARK ELEV.
 BENCHMARK :
 LOCATION :

LEGEND

- xx.xx' EXISTING LENGTH
- () EXISTING ELEVATION/SLOPE
- PROPOSED SIDEWALK
- PROPOSED SIDE CURB
- REMOVE AND REINSTALL BRICK PAVERS
- CLASS D PATCH
- DETECTABLE WARNINGS
- SIDEWALK REMOVAL REPLACE W/TOPSOIL & SOB

REFERENCE BENCHMARK ELEV.
 BENCHMARK :
 LOCATION :



1 REVISED SHEET 6/2/2022

FILE NAME =	USER NAME = bobuj	DESIGNED -	REVISION 1	DATE 05/31/2022
p:\dot-pw\bentley.com\PI\DOT\Documents\DOT\Offices\District 1\Projects\0119321\CADDData\Design\0119321-ADA-shr-details.dgn		DRAWN		
Default	PLOT SCALE = 10.0000' / in.	CHECKED -	REVISION -	
	PLOT DATE = 5/27/2022	DATE -	REVISION -	

**STATE OF ILLINOIS
 DEPARTMENT OF TRANSPORTATION**

**ADA RAMPS DETAILS (MILWAUKEE AVE. & COOK AVE.)
 NW & NE CORNERS**

SCALE: SHEET 2 OF 3 SHEETS STA. TO STA.

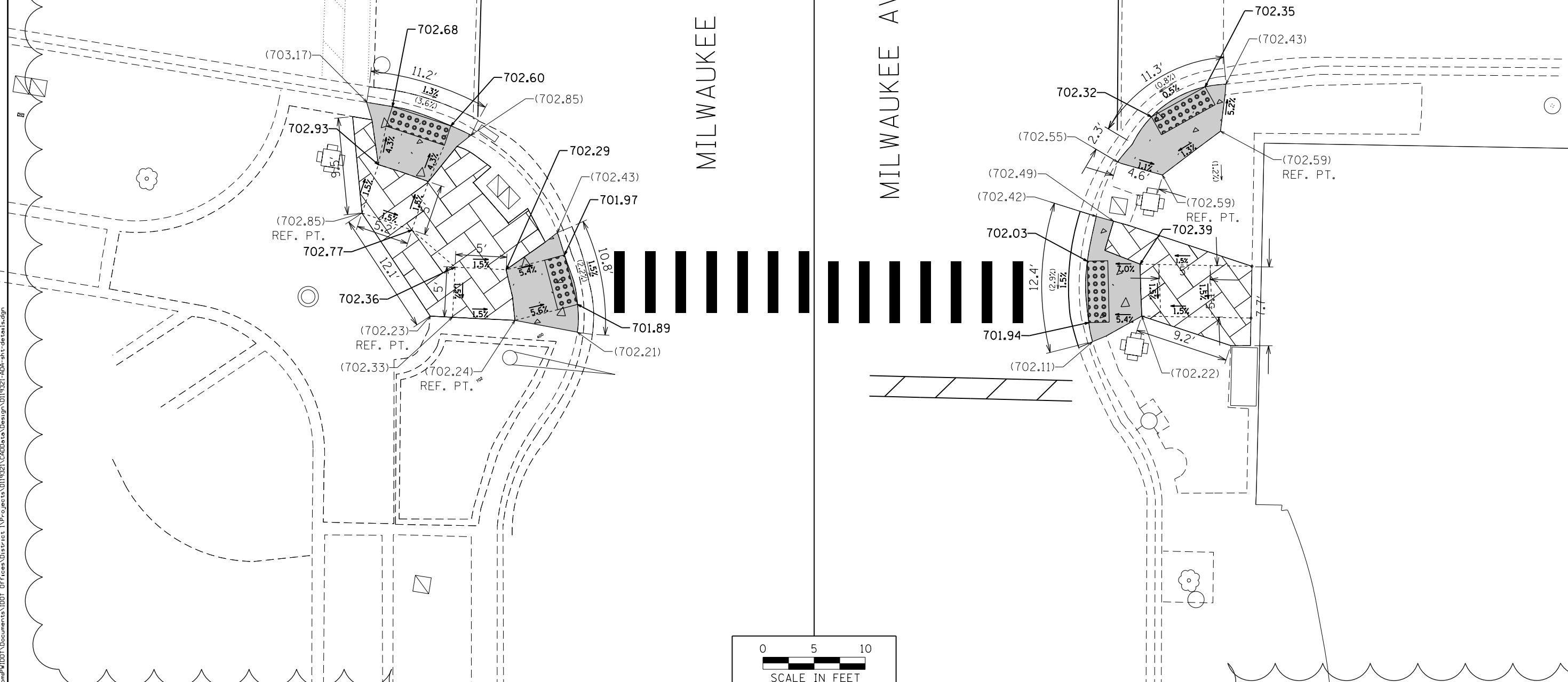
F.A.P. RTE.	SECTION	COUNTY	TOTAL SHEETS	SHEET NO.
330	2021-108-RS-SW&FL	LAKE	49	21
CONTRACT NO. 62P33				
ILLINOIS FED. AID PROJECT				

W. COOK AVE

E. COOK AVE

MILWAUKEE AVE (RTE 21)

MILWAUKEE AVE (RTE 21)



FILE NAME = p:\dot-pw\bentley.com\PI\DOT\Documents\1\Projects\District 1\Projects\DOT\Documents\1\DOT\Projects\1\19321\CADDData\Design\119321-ADA-shr-details.dgn

REFERENCE BENCHMARK ELEV.
BENCHMARK :
LOCATION :

REFERENCE BENCHMARK ELEV.
BENCHMARK :
LOCATION :

LEGEND

- xx.xx' EXISTING LENGTH
- () EXISTING ELEVATION/SLOPE
- PROPOSED SIDEWALK
- PROPOSED SIDE CURB
- REMOVE AND REINSTALL BRICK PAVERS
- CLASS D PATCH
- DETECTABLE WARNINGS
- SIDEWALK REMOVAL REPLACE W/TOPSOIL & SOB

1

REVISED SHEET 6/2/2022

FILE NAME =	USER NAME = bobuj	DESIGNED -	REVISED -	05/31/2022
pw\dot-pw\bentley.com\PI\DOT\Documents\1\Projects\District 1\Projects\DOT\Documents\1\DOT\Projects\1\19321\CADDData\Design\119321-ADA-shr-details.dgn		DRAWN	REVISED -	
Default	PLOT SCALE = 10.0000' / 1" / in.	CHECKED -	REVISED -	
	PLOT DATE = 5/27/2022	DATE -	REVISED -	

**STATE OF ILLINOIS
DEPARTMENT OF TRANSPORTATION**

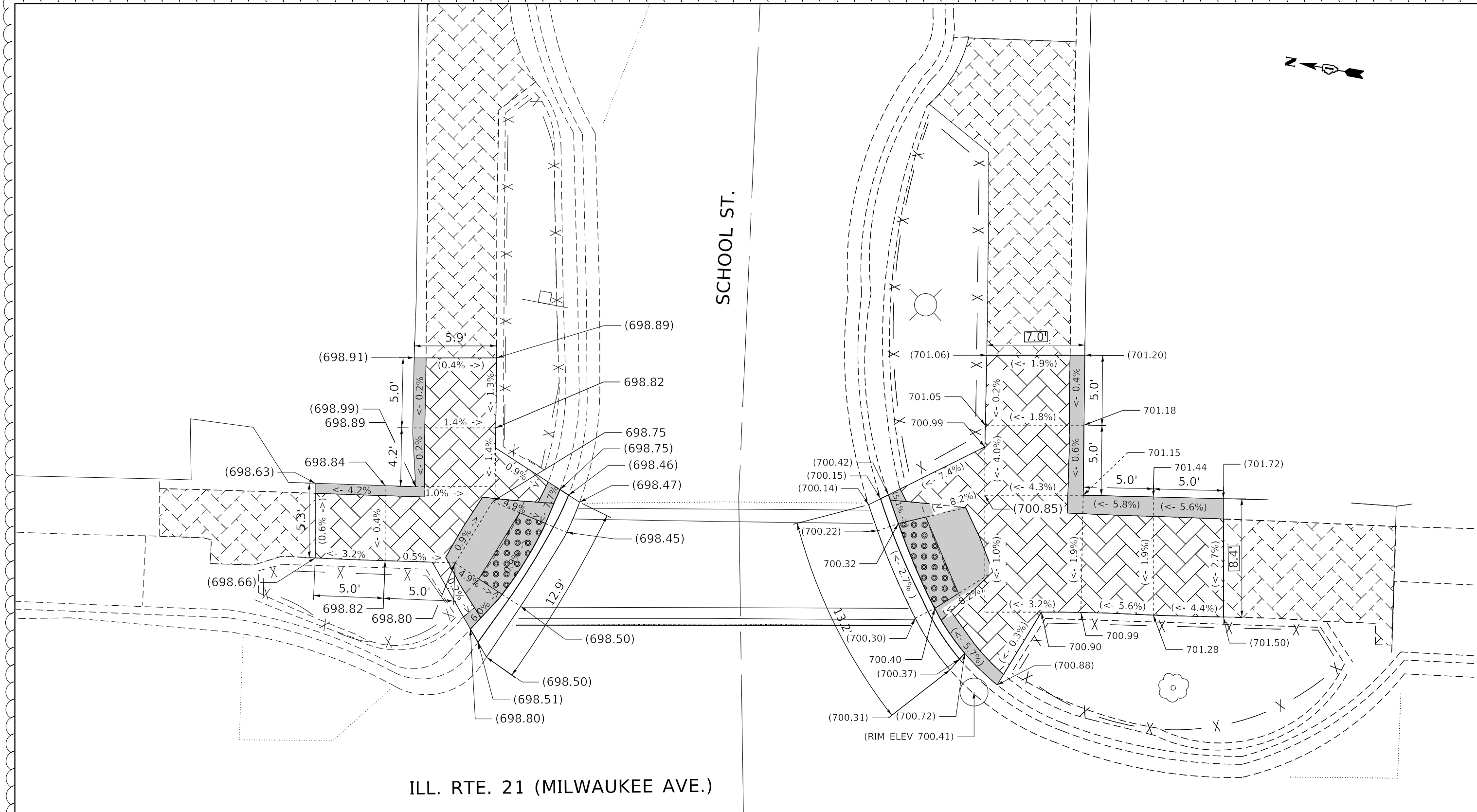
**ADA RAMPS DETAILS (MILWAUKEE AVE. & COOK AVE.)
SW & SE CORNERS**

SCALE: SHEET 3 OF 3 SHEETS STA. TO STA.

F.A.P. RTE.	SECTION	COUNTY	TOTAL SHEETS	SHEET NO.
330	2021-108-RS-SW&FL	LAKE	49	22
CONTRACT NO. 62P33				
ILLINOIS FED. AID PROJECT				



1



ILL. RTE. 21 (MILWAUKEE AVE.)

SCHOOL ST.

REFERENCE BENCH MARK ELEV
BENCHMARK :
LOCATION :

LEGEND

- xx.xx' EXISTING LENGTH
- PROPOSED SIDE CURB
- () EXISTING ELEVATION/SLOPE
- PROPOSED SIDEWALK
- DETECTABLE WARNINGS
- SIDEWALK REMOVAL
REPLACE W/TOPSOIL & SOD

REFERENCE BENCH MARK ELEV
BENCHMARK :
LOCATION :

1 ADDED ENTIRE SHEET 6/2/2022

FILE NAME :	USER NAME = bobulnj	DESIGNED -	REVISED -
pw:\idot-pw.bentley.com\PWIDOT\Documents\IDOT Offices\District 1\Projects\DI19321\CAD\DRAWING\DI19321-ADA-sht-details.dgn		REVISOR -	REVISOR -
Default	PLOT SCALE = 10.0000' / in.	CHECKED -	REVISOR -
	PLOT DATE = 5/27/2022	DATE -	REVISOR -

**STATE OF ILLINOIS
DEPARTMENT OF TRANSPORTATION**

**ADA RAMPS DETAILS (MILWAUKEE AVE. & SCHOOL ST.)
NE & SE CORNERS**

SCALE: SHEET 1 OF 1 SHEETS STA. TO STA.

F.A.P. RTE.	SECTION	COUNTY	TOTAL SHEETS	SHEET NO.
330	2021-108-RS-SW&FL	LAKE	49	22A
CONTRACT NO. 62P33				
ILLINOIS FED. AID PROJECT				



SOUTHWEST CORNER



SOUTHEAST CORNER



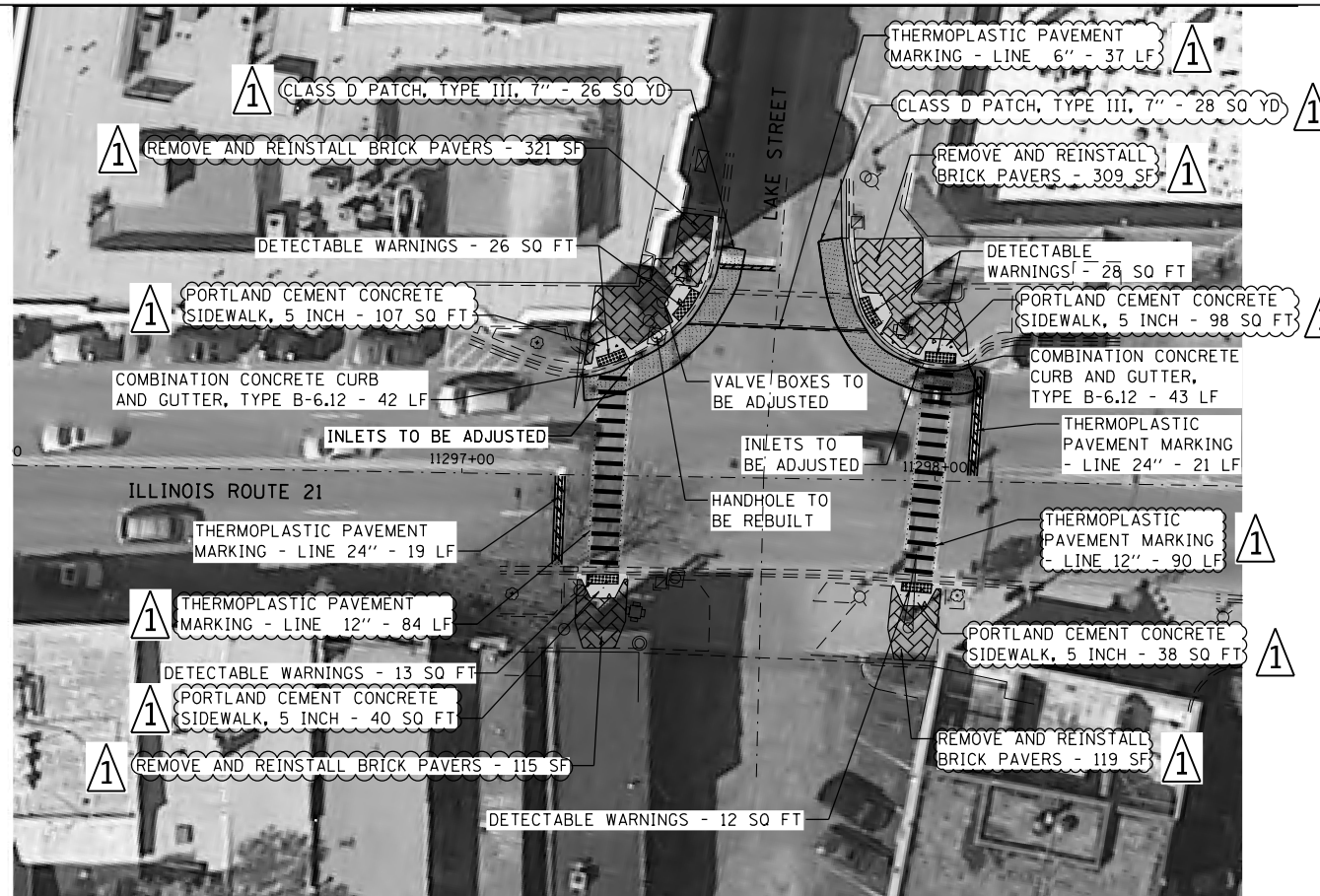
EXISTING



NORTHWEST CORNER

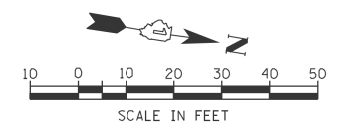


NORTHEAST CORNER



PROPOSED

NOTE: MUNICIPAL COORDINATION REQUIRED ON ALL REMOVAL AND REINSTALLMENT OF BRICK PAVERS



MODEL: Default
FILE: \\sdc-paw.bentley.com\PI\DOT\Documents\DOT Office\Shirley: I:\Projects\119321\ICAD\Drawings\119321-1-ADA-Ramps\119321-1-ADA-Ramps.dgn

USER NAME = babuln]	DESIGNED -	REVISED -	05/31/2022
	DRAWN -	REVISED -	
PLOT SCALE = 10.0000 ' / in.	CHECKED -	REVISED -	
PLOT DATE = 5/27/2022	DATE -	REVISED -	

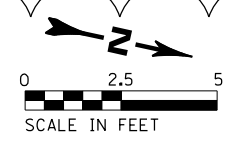
**STATE OF ILLINOIS
DEPARTMENT OF TRANSPORTATION**

**ADA RAMPS EXISTING AND PROPOSED PLANS
IL 21 (MILWAUKEE AVE.) & LAKE ST.**

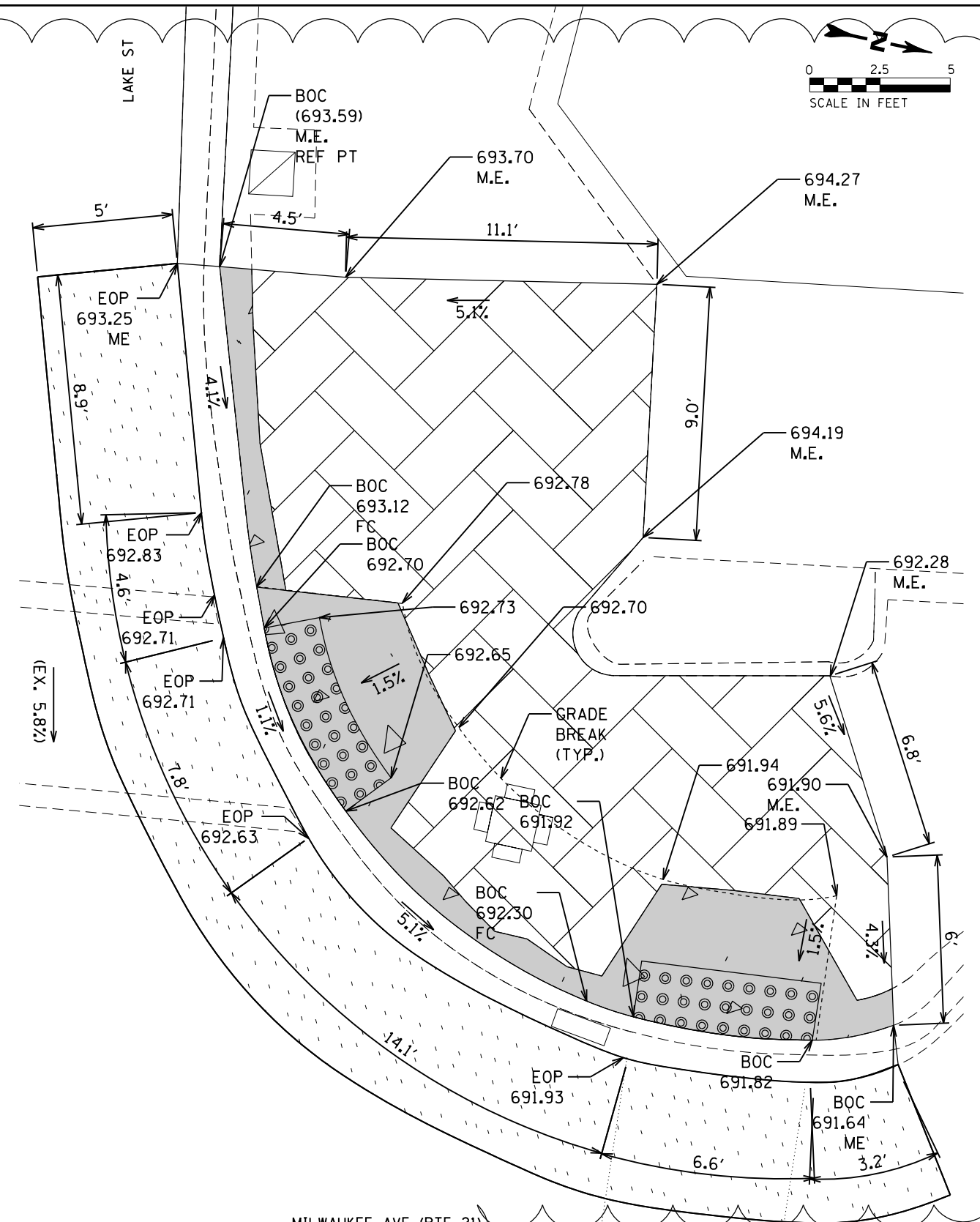
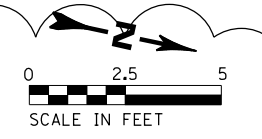
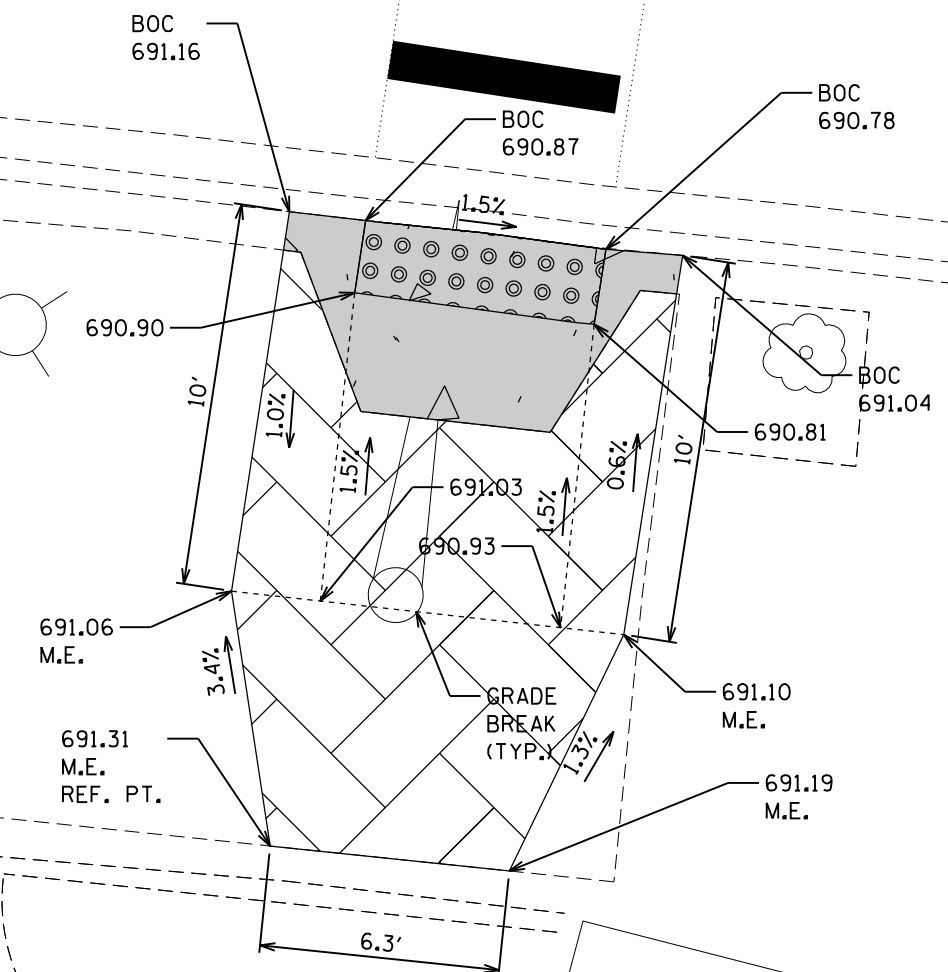
SCALE: SHEET 1 OF 3 SHEETS STA. TO STA.

REVISED SHEET 6/2/2022

F.A.P. RTE.	SECTION	COUNTY	TOTAL SHEETS	SHEET NO.
330	2021-108-R5-SW&FL	LAKE	49	23
CONTRACT NO. 62P33				
ILLINOIS FED. AID PROJECT				



MILWAUKEE AVE (RTE 21)



MILWAUKEE AVE (RTE 21)

LEGEND

REFERENCE BENCH MARK ELEV
BENCHMARK :
LOCATION :

- xx.xx' EXISTING LENGTH
- PROPOSED SIDE CURB
- EXISTING ELEVATION/SLOPE

- PROPOSED SIDEWALK
- DETECTABLE WARNINGS
- REMOVE AND REINSTALL BRICK PAVERS

1

REVISED SHEET 6/2/2022

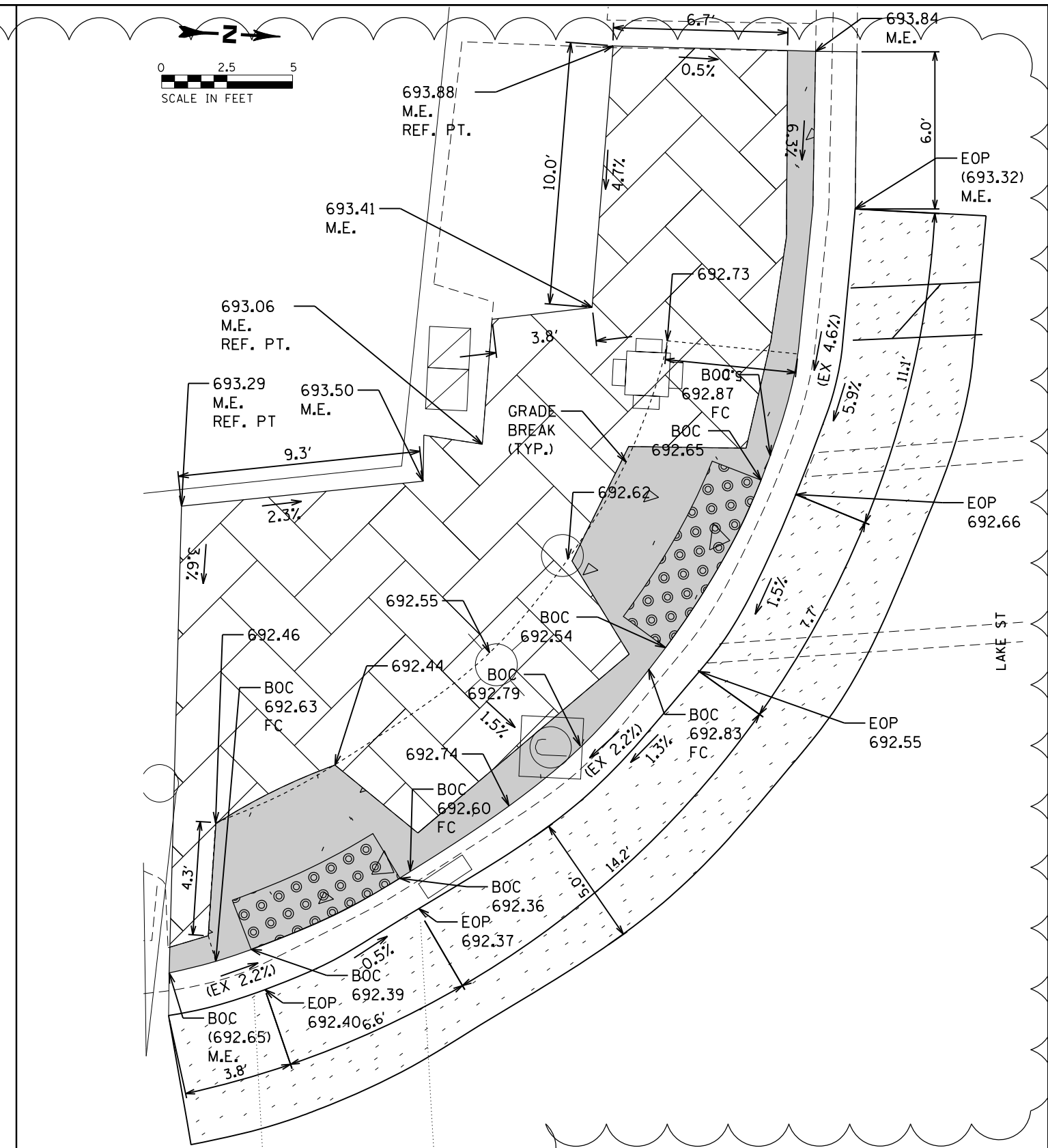
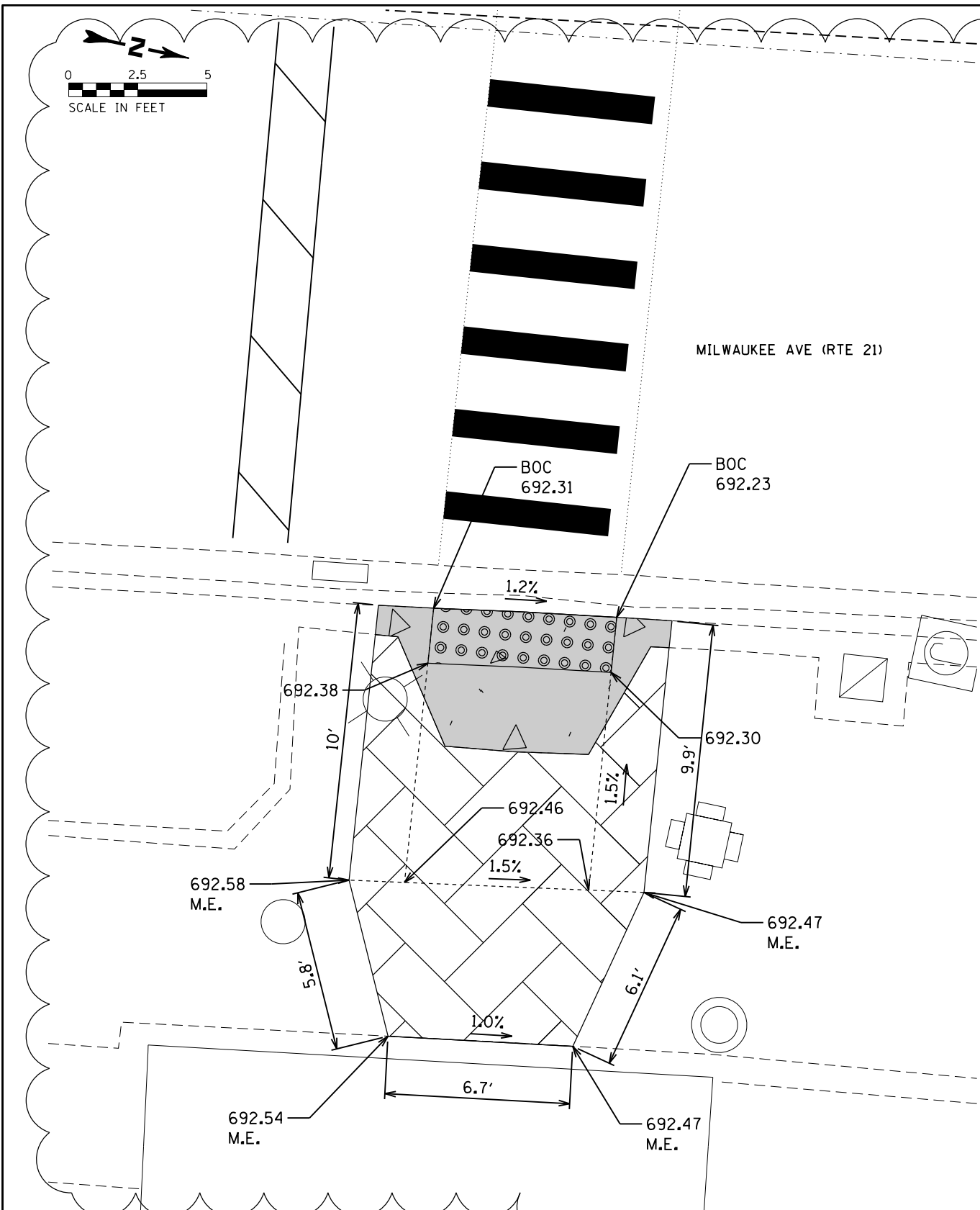
FILE NAME =	USER NAME = bobulnj	DESIGNED -	REVISED -	05/31/2022
pw:\idot-pw\Bentley.com\PIDOT\Documents\IDOT Offices\District 1\Projects\0119321\CAD\Drawings\0119321-ADA-shr-details.dgn		DRAWN -	REVISED -	
	PLOT SCALE = 10.0000" / 1"	CHECKED -	REVISED -	
Default	PLOT DATE = 5/27/2022	DATE -	REVISED -	

STATE OF ILLINOIS
DEPARTMENT OF TRANSPORTATION

ADA RAMPS DETAILS (MILWAUKEE AVE. & LAKE ST.)
NE & NW CORNERS

SCALE: SHEET 2 OF 3 SHEETS STA. TO STA.

F.A.P. RTE.	SECTION	COUNTY	TOTAL SHEETS	SHEET NO.
330	2021-108-RS-SW&FL	LAKE	49	24
CONTRACT NO. 62P33				
ILLINOIS FED. AID PROJECT				



REFERENCE BENCH MARK ELEV

BENCHMARK :

LOCATION :

LEGEND



EXISTING LENGTH



PROPOSED SIDE CURB



EXISTING ELEVATION/SLORE



PROPOSED SIDEWALK



DETECTABLE WARNINGS



REMOVE AND REINSTALL BRICK PAVERS

1

REVISED SHEET 6/2/2022

FILE NAME =	USER NAME = bobulnj	DESIGNED -	REVISION 1	05/31/2022
pw:\idot-pw\bentley.com\PIWIDOT\Documents\IDOT Offices\District 1\Projects\DI19321\CAD\DRAWING\DI19321-ADA-shr-details.dgn		CHECKED -	REVISION 2	
Default	PLOT SCALE = 10.0000' / in.	DATE -	REVISION 3	
	PLOT DATE = 5/27/2022		REVISION 4	

STATE OF ILLINOIS
DEPARTMENT OF TRANSPORTATION

ADA RAMPS DETAILS (MILWAUKEE AVE. & LAKE ST.)
SE & SW CORNERS

SCALE: SHEET 3 OF 3 SHEETS STA. TO STA.

F.A.P. RTE.	SECTION	COUNTY	TOTAL SHEETS	SHEET NO.
330	2021-108-RS-SW&FL	LAKE	49	25
CONTRACT NO. 62P33				
ILLINOIS FED. AID PROJECT				



SOUTH



SOUTHEAST CORNER



EXISTING



EAST

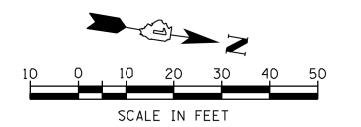


NORTHEAST CORNER



PROPOSED

NOTE: MUNICIPAL COORDINATION REQUIRED ON ALL REMOVAL AND REINSTALLMENT OF BRICK PAVERS



MODEL: Default
 FILE: \\fs1\caw_bentley.com\PI\DOT\Documents\DOT_Offices\Bartlett_1\Projects\113021\113021\113021-113021-113021-113021.dgn

USER NAME = babulnj	DESIGNED -	REVISED -	REVISED -
	DRAWN -	REVISED -	REVISED -
PLOT SCALE = 10.0000" / in.	CHECKED -	REVISED -	REVISED -
PLOT DATE = 5/27/2022	DATE -	REVISED -	REVISED -

**STATE OF ILLINOIS
DEPARTMENT OF TRANSPORTATION**

**ADA RAMPS EXISTING AND PROPOSED PLANS
IL 21 (MILWAUKEE AVE.) & METRA CROSSING**

SCALE: SHEET 1 OF 4 SHEETS STA. TO STA.

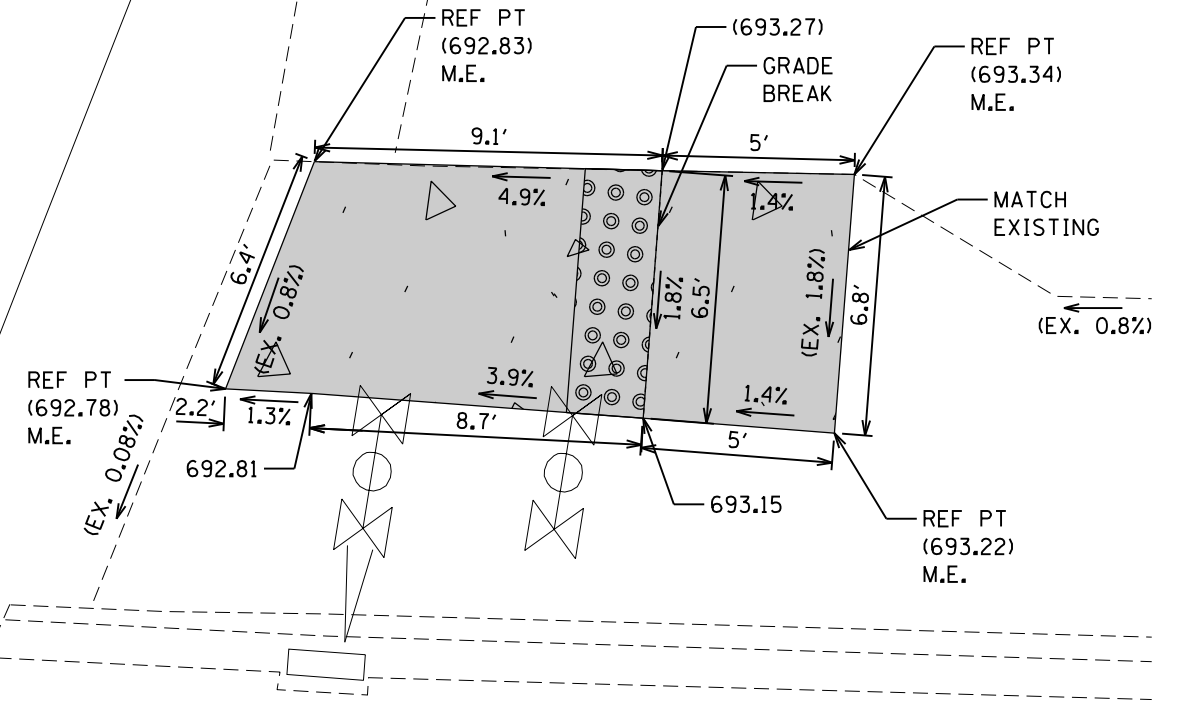
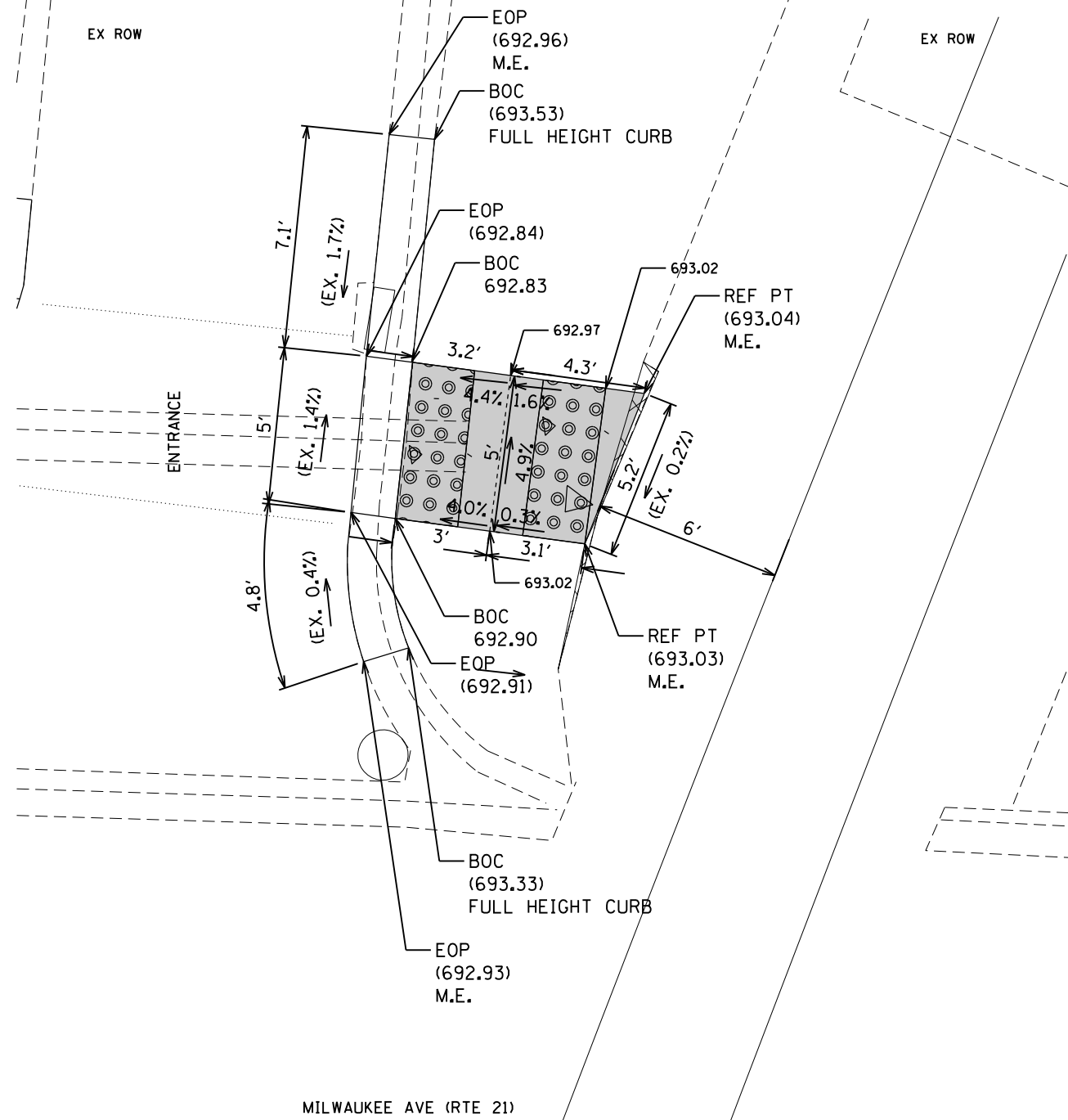
F.A.P. RTE.	SECTION	COUNTY	TOTAL SHEETS	SHEET NO.
330	2021-108-R5-SW&FL	LAKE	49	26
CONTRACT NO. 62P33				
ILLINOIS FED. AID PROJECT				

REVISED SHEET 6/2/2022



EX ROW

EX ROW



REFERENCE BENCH MARK ELEV

BENCHMARK :

LOCATION :

LEGEND

- xx.xx' EXISTING LENGTH
- == PROPOSED SIDE CURB
- () EXISTING ELEVATION/SLOPE

PROPOSED SIDEWALK

DETECTABLE WARNINGS

REMOVE AND REINSTALL BRICK PAVERS

FILE NAME =	USER NAME = bobunj	DESIGNED -	REVISED - 1	05/31/2022
pw:\ildot-pw\bentley.com\PWIDOT\Documents\IDOT Offices\District 1\Projects\D119321\CAD\Drawings\D119321-ADA-shr-details.dgn		DRAWN -	REVISED -	
	PLOT SCALE = 10.0000' / in.	CHECKED -	REVISED -	
Default	PLOT DATE = 5/27/2022	DATE -	REVISED -	

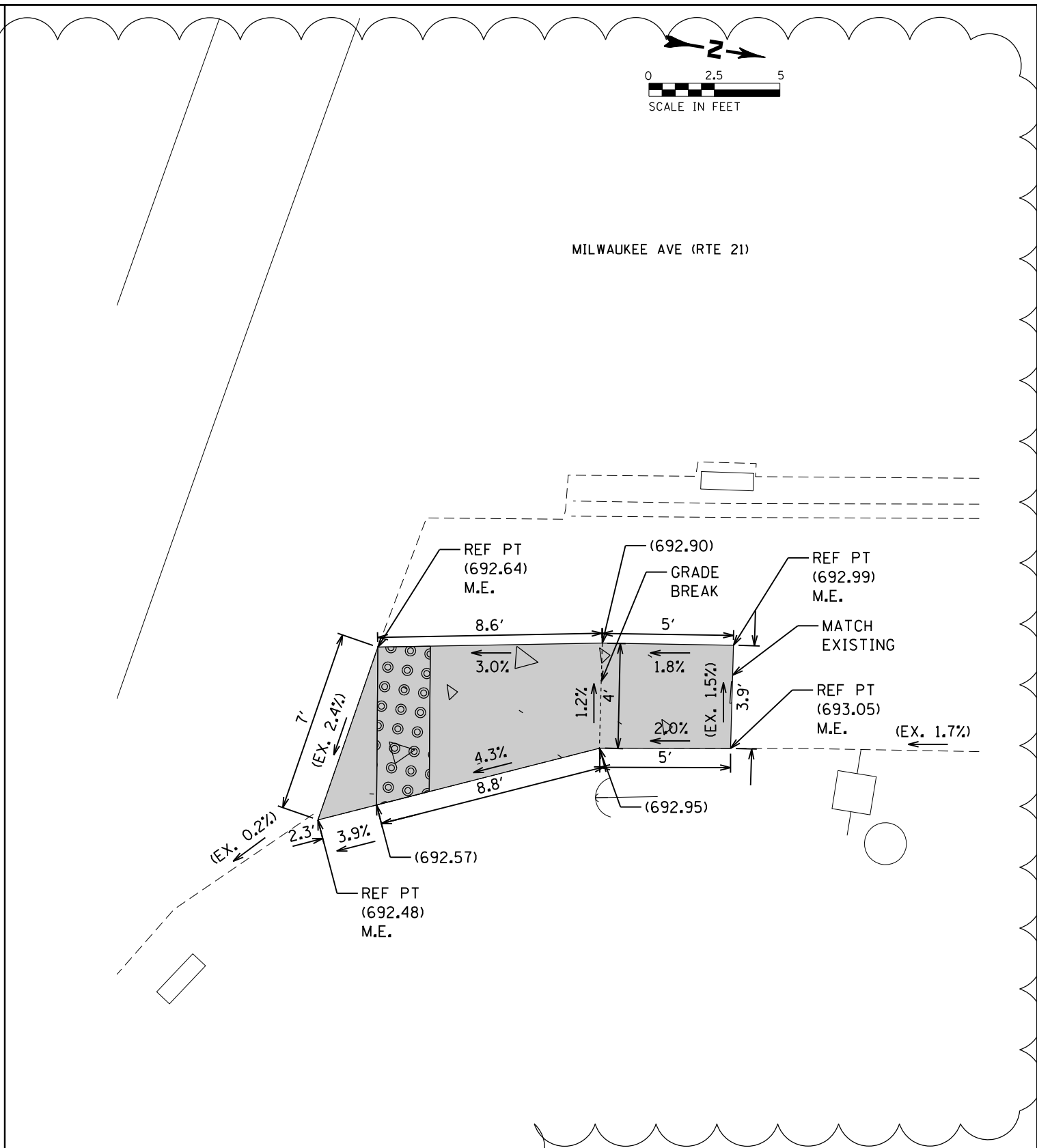
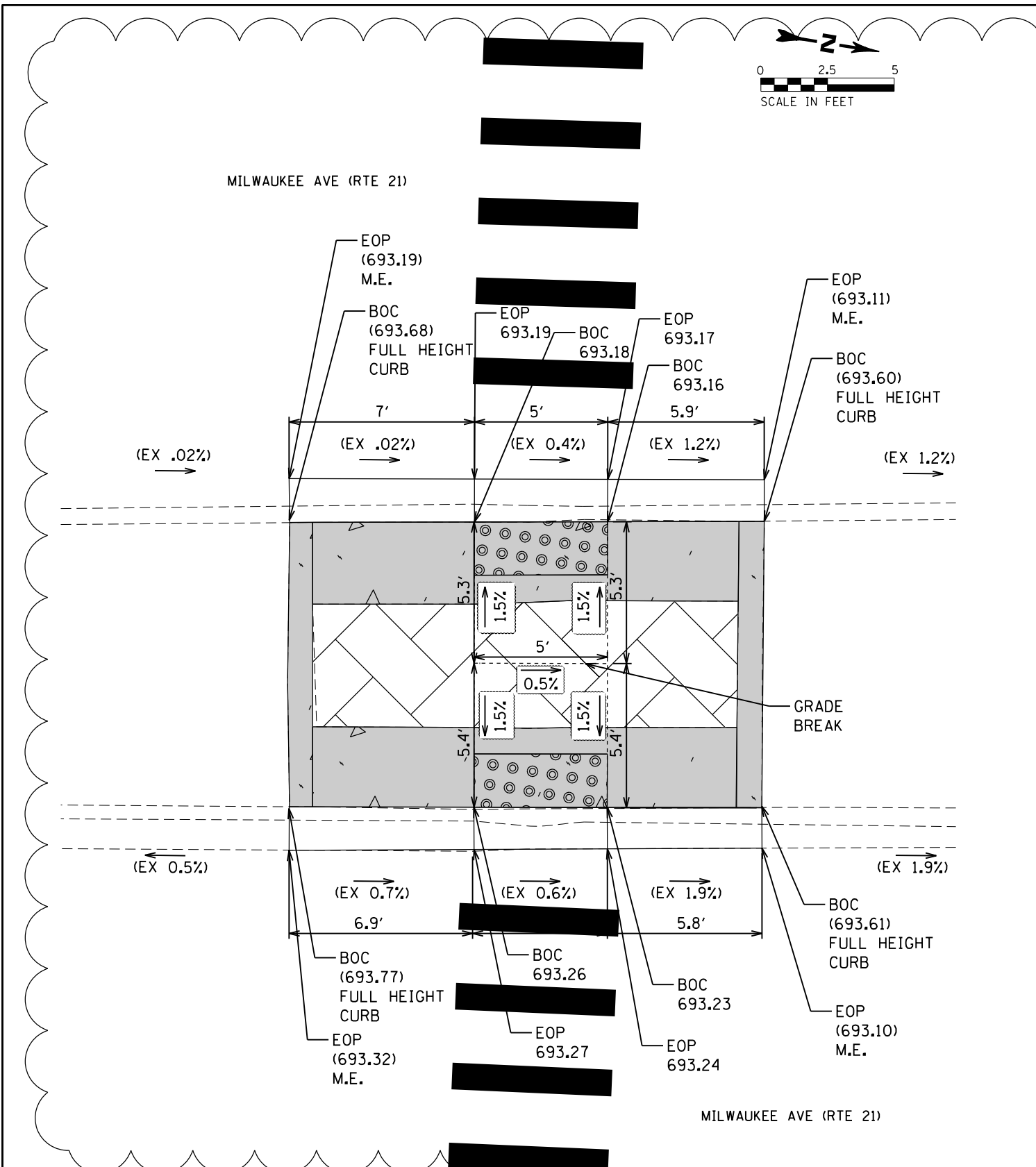
STATE OF ILLINOIS
DEPARTMENT OF TRANSPORTATION

ADA RAMPS DETAILS (MILWAUKEE AVE. & METRA CROSSING)
NW CORNERS

SCALE: SHEET 2 OF 4 SHEETS STA. TO STA.

F.A.P. RTE.	SECTION	COUNTY	TOTAL SHEETS	SHEET NO.
330	2021-108-RS-SW&FL	LAKE	49	27
CONTRACT NO. 62P33				

ILLINOIS FED. AID PROJECT



REFERENCE BENCH MARK ELEV
 BENCHMARK :
 LOCATION :

LEGEND

	EXISTING LENGTH		PROPOSED SIDEWALK
	PROPOSED SIDE CURB		REMOVE AND REINSTALL BRICK PAVERS
	EXISTING ELEVATION/SLORE		

1

REVISED SHEET 6/2/2022

FILE NAME =	USER NAME = bobulnj	DESIGNED -	REVISION 1	05/31/2022
pw:\idot-pw\bentley.com\PIDOT\Documents\IDOT Offices\District 1\Projects\DI19321\CAD\Drawings\DI19321-ADA-sht-details.dgn		CHECKED -	REVISION 2	
Default	PLOT DATE = 5/27/2022	DATE -	REVISION 3	

**STATE OF ILLINOIS
 DEPARTMENT OF TRANSPORTATION**

**ADA RAMPS DETAILS (MILWAUKEE AVE. & METRA CROSSING)
 MEDIAN CROSSING & NE CORNER**

SCALE: SHEET 4 OF 4 SHEETS STA. TO STA.

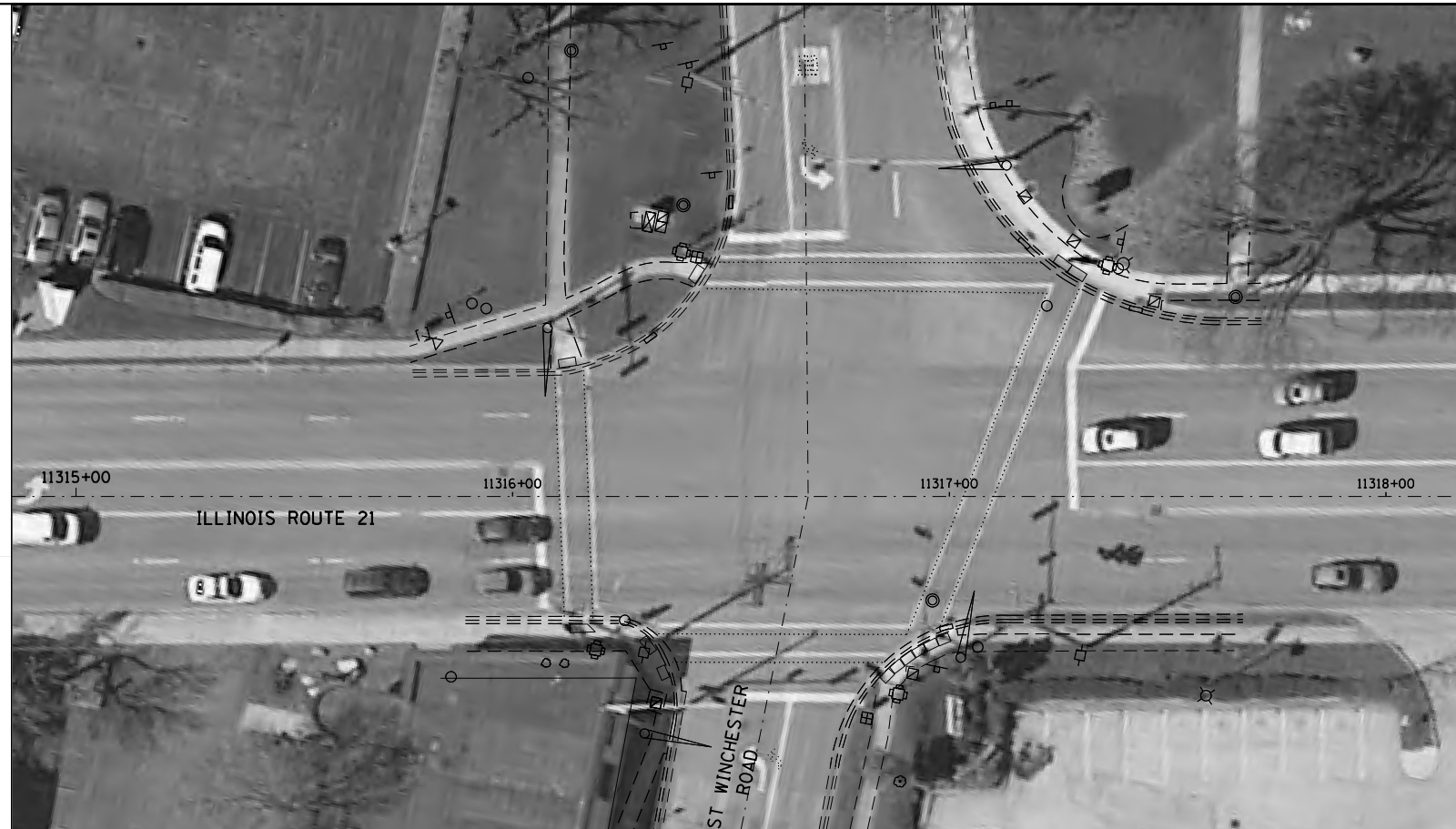
F.A.P. RTE.	SECTION	COUNTY	TOTAL SHEETS	SHEET NO.
330	2021-108-RS-SW&FL	LAKE	49	29
CONTRACT NO. 62P33				
ILLINOIS FED. AID PROJECT				



SOUTHWEST CORNER



SOUTHEAST CORNER



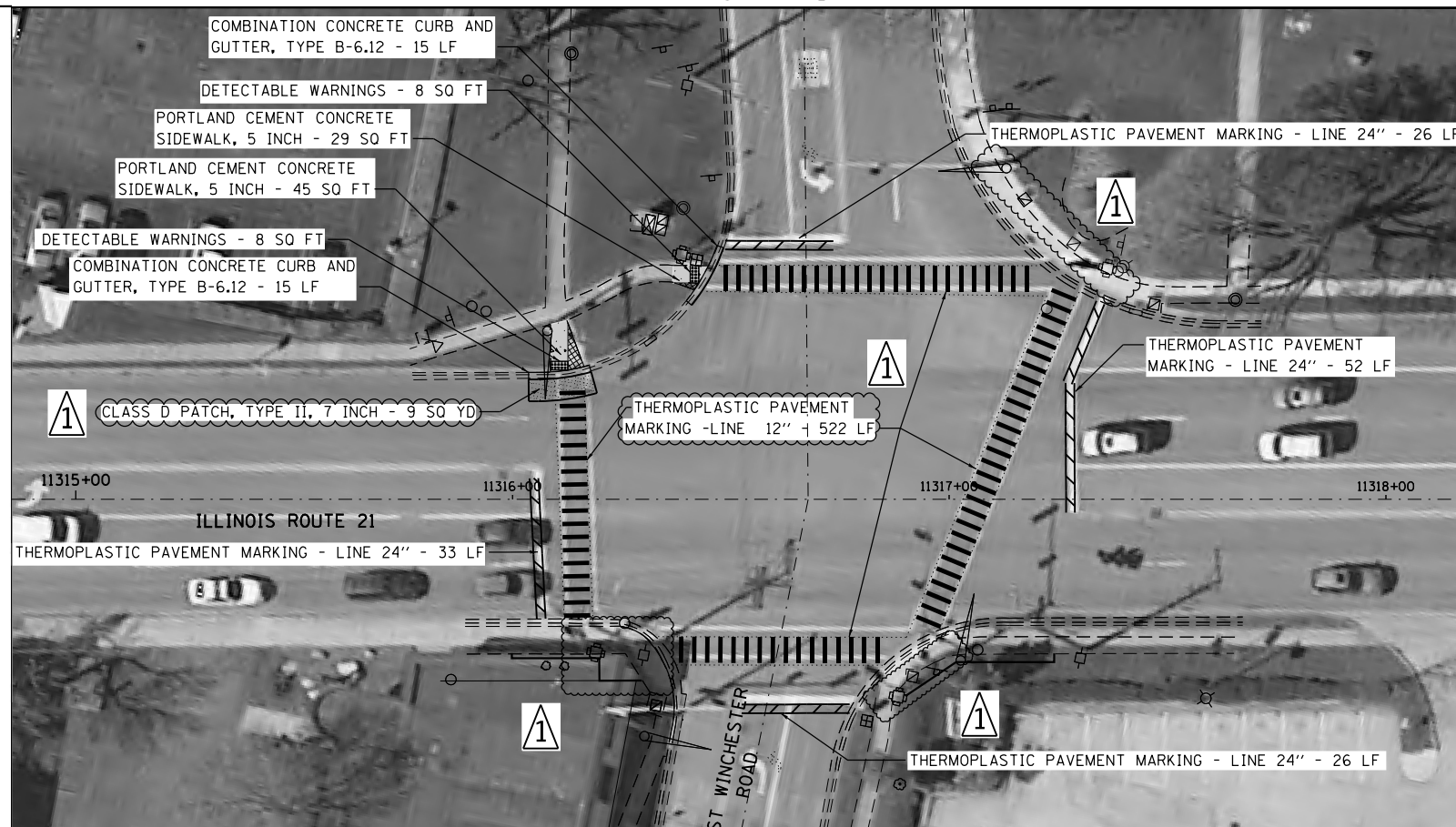
EXISTING



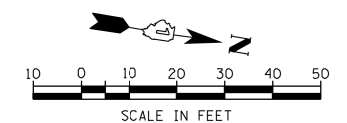
NORTHWEST CORNER



NORTHEAST CORNER



PROPOSED



MODEL: Default
 FILE: \\sdc-paw.bentley.com\FWIDOT\Documents\DOT_Offices\Bharat_1\Projects\119321\CADD\Drawings\119321-ADA-Ramps\119321-ADA-Ramps.dgn

USER NAME = babulnj	DESIGNED -	REVISED -	05/25/2022
	DRAWN -	REVISED -	
PLOT SCALE = 10.0000' / in.	CHECKED -	REVISED -	
PLOT DATE = 5/27/2022	DATE -	REVISED -	

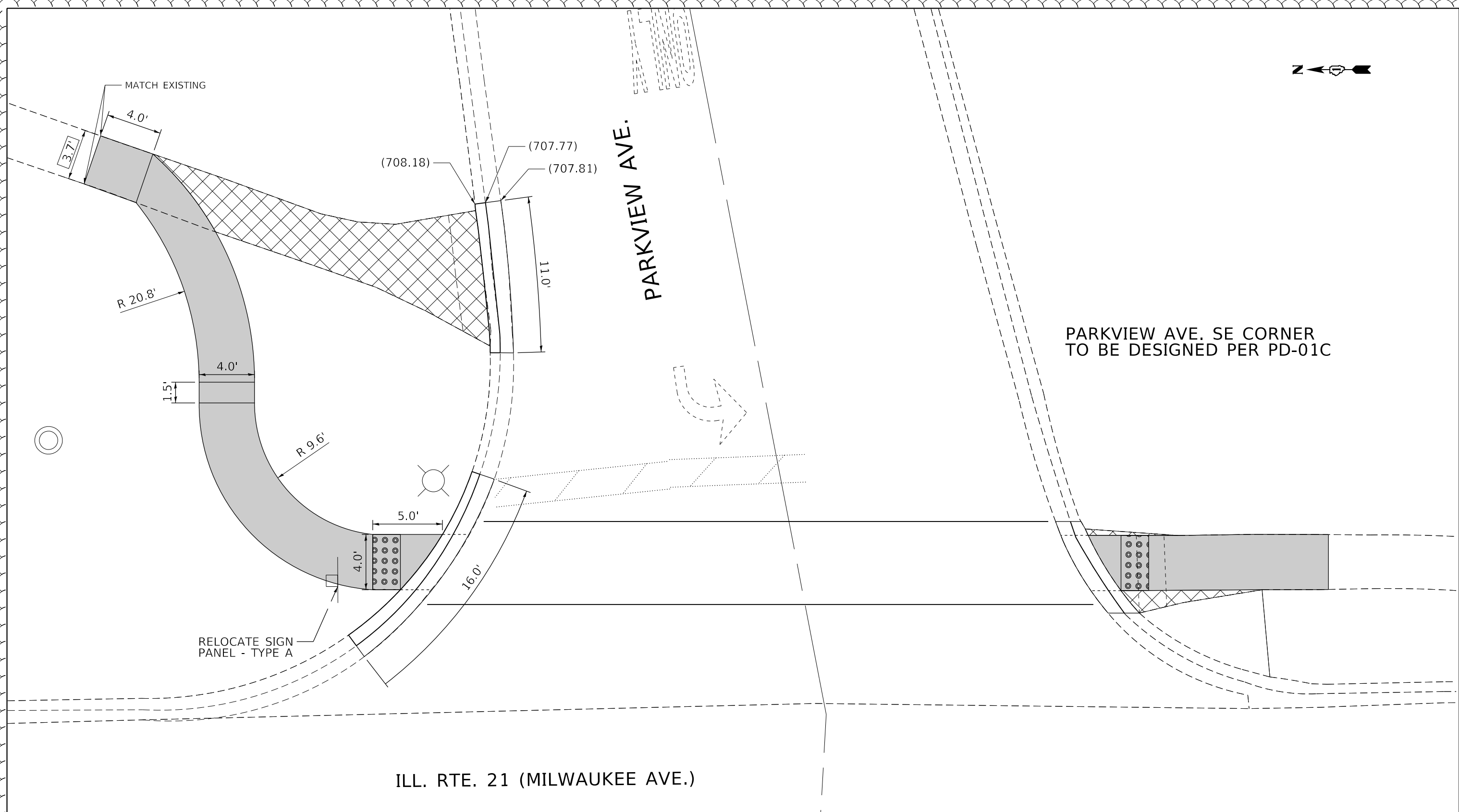
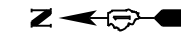
**STATE OF ILLINOIS
DEPARTMENT OF TRANSPORTATION**

**ADA RAMPS EXISTING AND PROPOSED PLANS
IL 21 (MILWAUKEE AVE) & WINCHESTER RD.**

SCALE: SHEET 1 OF 2 SHEETS STA. TO STA.

REVISION 1 REVISED SHEET 6/2/2022

F.A.P. RTE.	SECTION	COUNTY	TOTAL SHEETS	SHEET NO.
330	2021-108-R5-SW&FL	LAKE	49	30
CONTRACT NO. 62P33				
ILLINOIS FED. AID PROJECT				



PARKVIEW AVE. SE CORNER
TO BE DESIGNED PER PD-01C

ILL. RTE. 21 (MILWAUKEE AVE.)

REFERENCE BENCH MARK ELEV

BENCHMARK :

LOCATION :

LEGEND

xx.xx'

EXISTING LENGTH

==

PROPOSED SIDE CURB

()

EXISTING ELEVATION/SLOPE



PROPOSED SIDEWALK



DETECTABLE WARNINGS



SIDEWALK REMOVAL
REPLACE W/TOPSOIL & SOD

REFERENCE BENCH MARK ELEV

BENCHMARK :

LOCATION :

1 ADDED ENTIRE SHEET 6/2/2022

FILE NAME :	USER NAME = bobuinj	DESIGNED -	REVISED -
pw:\idot-pw.bentley.com\PIDOT\Documents\IDOT Offices\District 1\Projects\D119321\CAD\Drawings\B119321-ADA-shr-details.dgn		CHECKED -	REVISED -
Default	PLOT SCALE = 10.0000' / in.	DATE -	REVISED -
	PLOT DATE = 5/31/2022		

STATE OF ILLINOIS
DEPARTMENT OF TRANSPORTATION

ADA RAMPS DETAILS (MILWAUKEE AVE. & PARKVIEW DR.)
NE CORNER

SCALE: SHEET 1 OF 1 SHEETS STA. TO STA.

F.A.P. RTE.	SECTION	COUNTY	TOTAL SHEETS	SHEET NO.
330	2021-108-RS-SW&FL	LAKE	49	33B
CONTRACT NO. 62P33				
ILLINOIS FED. AID PROJECT				